



WEST SHORE LAKE PONTCHARTRAIN

CPRA BOARD MEETING

**BRADLEY DROUANT
CHIEF, LAKE PONTCHARTRAIN AND VICINITY BRANCH
NEW ORLEANS DISTRICT
U.S. ARMY CORPS OF ENGINEERS**

JUNE 17, 2026



U.S. ARMY



US Army Corps
of Engineers®



AGENDA

- **Overview**
- **Accomplishments**
- **Current Status**
- **Construction Schedule**
- **St. James Features**



U.S. ARMY



US Army Corps
of Engineers®

WEST SHORE LAKE PONTCHARTRAIN

Features Under Design & Construction



St. James Parish

St. John the Baptist

Garyville

Reserve

LaPlace

Lake Pontchartrain

Bonnet Carre Spillway

St. Charles Parish

WSLP-114A
Drainage Structure, Levee, & Floodwall Construction

MAUREPAS DIVERSION: WSLP MD-111
Drainage Structure, Levee, & Floodwall Design

MAUREPAS DIVERSION: WSLP MD-112
Levee, Floodwalls, & Floodgate Design

WSLP-110
Levee Construction

WSLP-110A
Floodwall Design

MAUREPAS DIVERSION: WSLP MD-113
Levee, Floodwalls, & Floodgates Design

WSLP-109
Levee & Floodwall Construction

WSLP-108
Drainage Structure, Levee, & Construction

WSLP-114
Pump Station & Drainage Structure, & Navigation Gate Design

WSLP-107
Levee Construction

WSLP-106
Levee & Floodwall Construction

WSLP-105
Drainage Structure & Levee Construction

WSLP-104
Levee & Floodwall Construction

WSLP-114
Pump Station & Drainage Structure, & Floodwall Design

WSLP-103
Levee & Floodgate Construction

WSLP-103A
Floodgate & Floodwall Design

WSLP-102
Levee, Floodwall, & Drainage Structure Construction

WSLP-101A
Levee Construction

WSLP-114A
Drainage Structure, Levee, & Floodwall Construction

ACCOMPLISHMENTS

- Awarded 12 of 14 USACE contracts to date
- Awarded last major USACE Contract (WSLP-114) in April for \$419M
- Total value of Construction: \$1.15B



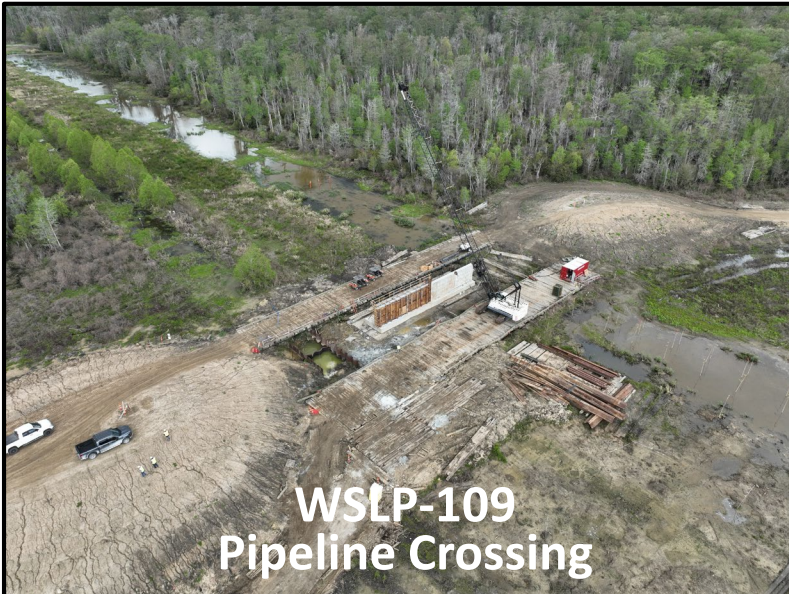
USACE STRUCTURES

Active Construction:

- 7 Drainage Structures
- ~5,000' of Floodwalls
- 1 Floodgate
- 1 Swing gate
- 1 Navigation Gate

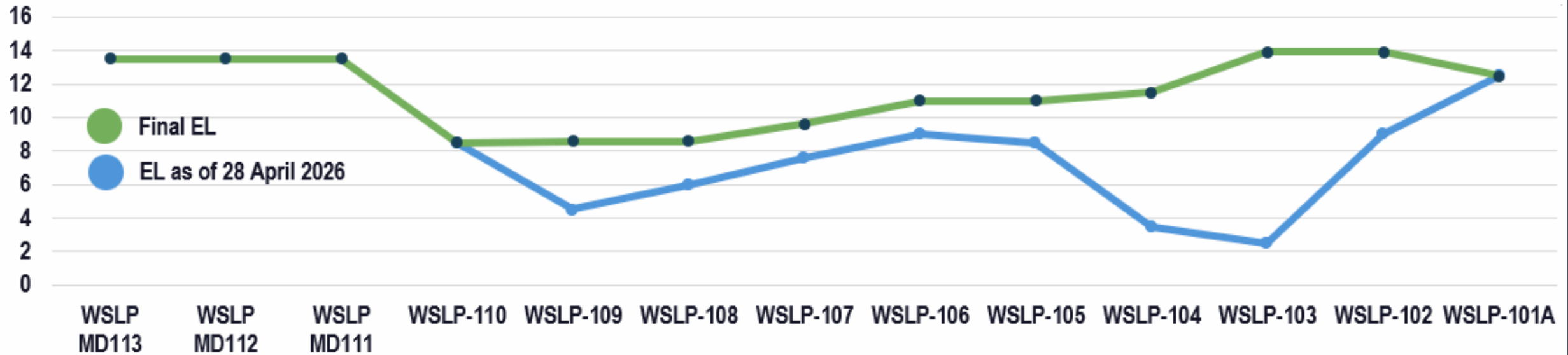
Remaining Awards:

- WSLP-103a T-wall (2026)
- WSLP-110a floodwall (2028)



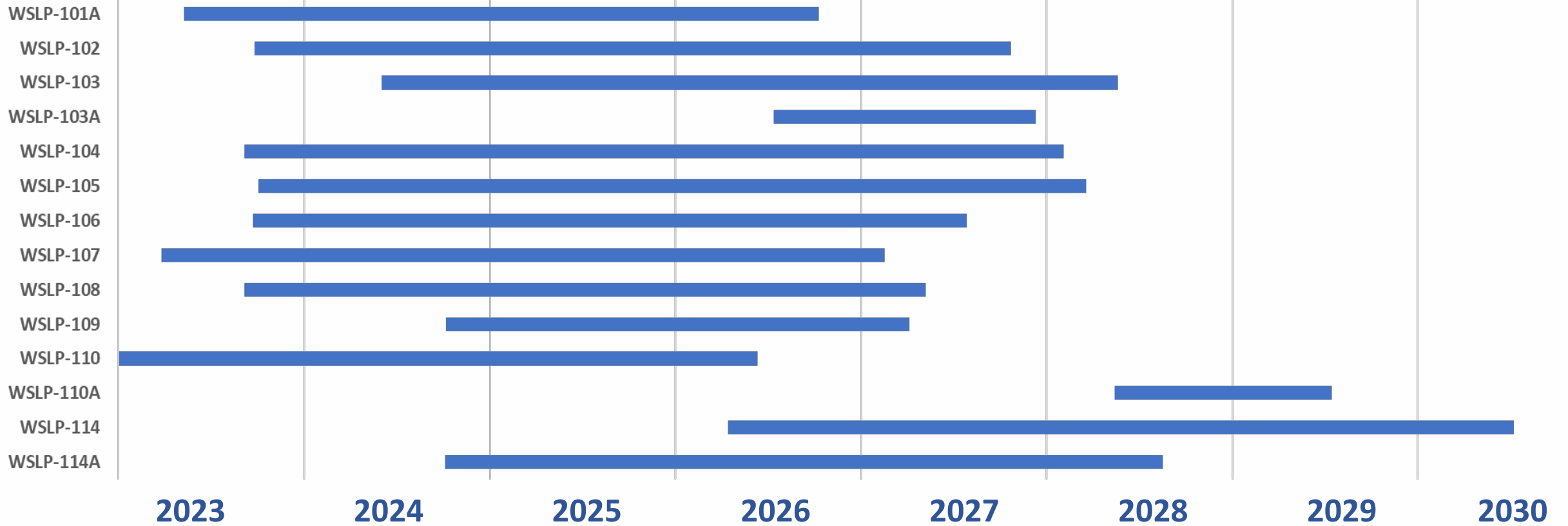
LEVEE CONSTRUCTION PROGRESS

All USACE levee construction will be complete by the end of 2027



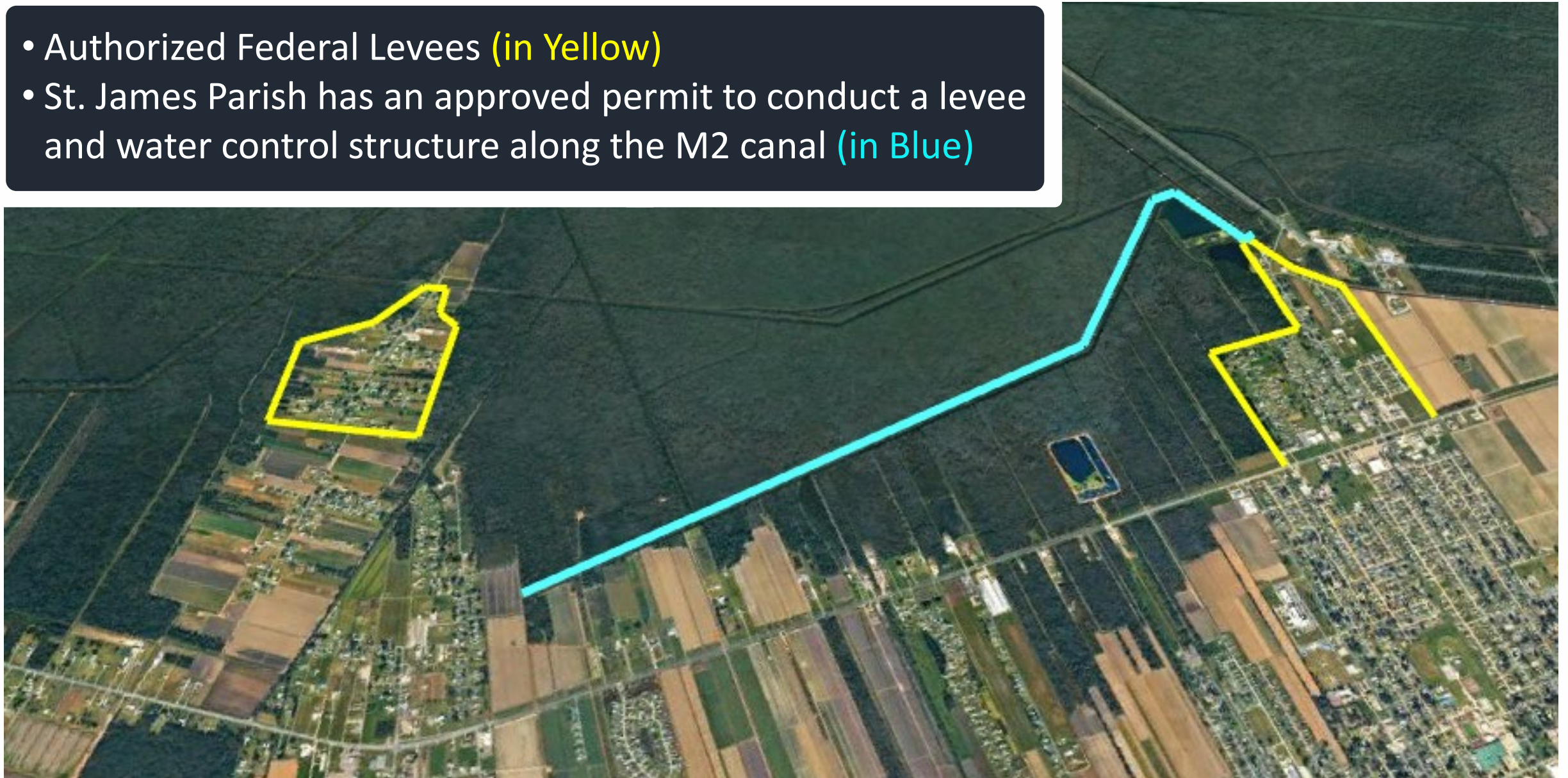
*Levee gaps currently exist at all floodgates, floodwalls, drainage structures, and pump stations. Locations of these structures are indicated on the map. System will be closed and fully-functional when pump stations are Reserve Relief Canal and Hwy 55 are completed under contract WSLP-114.

CONSTRUCTION SCHEDULE



ST. JAMES PARISH FEATURES

- Authorized Federal Levees (in Yellow)
- St. James Parish has an approved permit to conduct a levee and water control structure along the M2 canal (in Blue)





KEEP IN TOUCH WITH THE NEW ORLEANS DISTRICT

Latest News, Announcements, Events & Connections



District website

www.mvn.usace.army.mil



Facebook

www.facebook.com/usacenola



Instagram

www.instagram.com/usace_nola



X (Twitter)

twitter.com/usacenola



LinkedIn

Search - US Army Corps of Engineers New Orleans District



U.S. ARMY



US Army Corps
of Engineers®

RIVER REINTRODUCTION INTO MAUREPAS SWAMP



JUNE 2026 CPRA BOARD MEETING

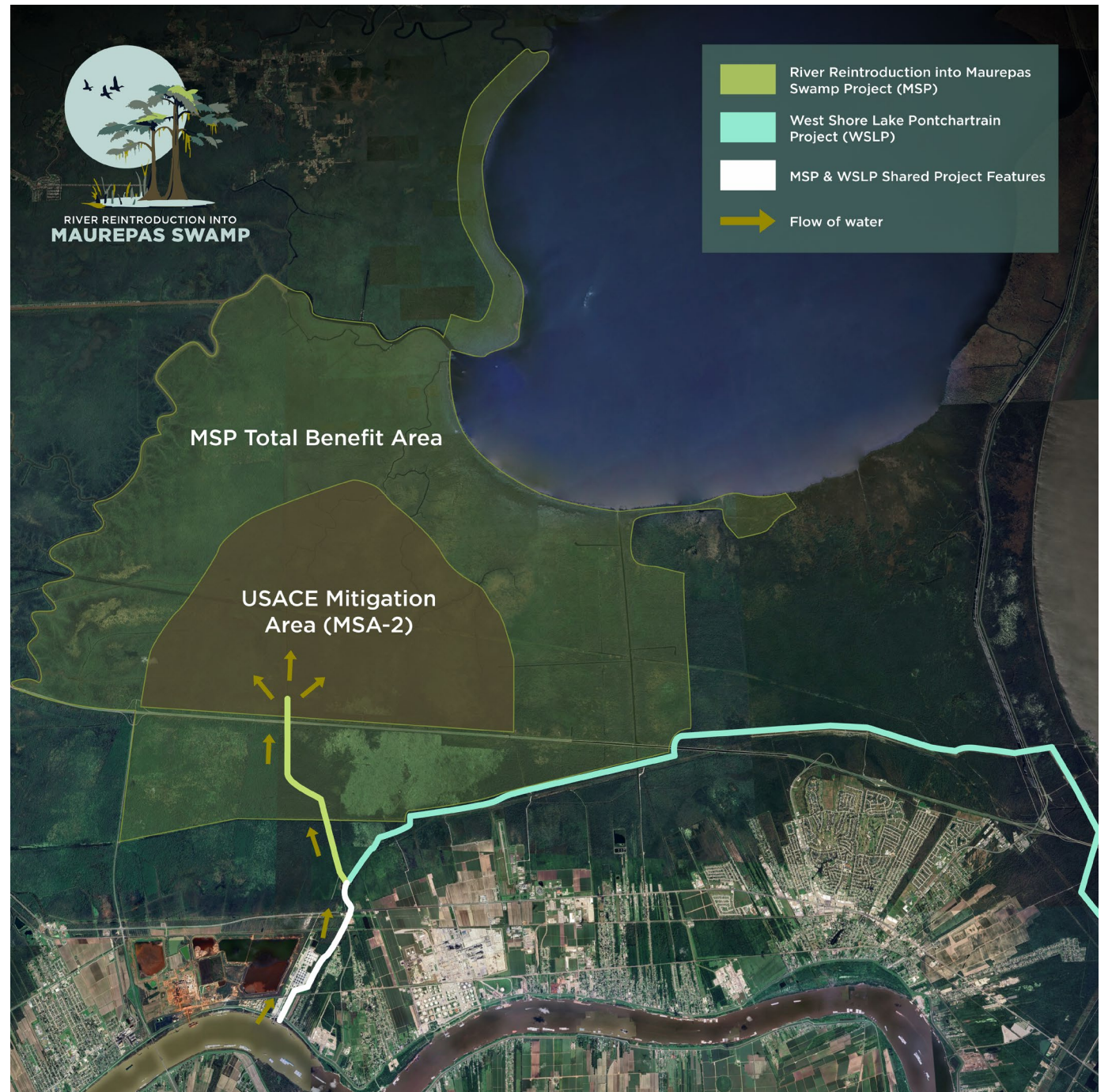
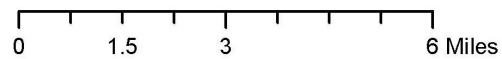
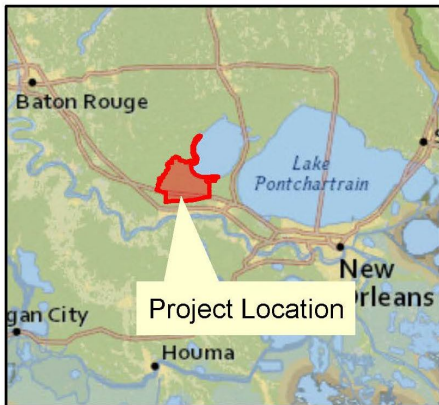


PROJECT AREA

St. John the Baptist,
St. James, and Ascension
Parishes, Louisiana

LEGEND

-  Project Boundary
-  Project Infrastructure



PROJECT ORIGINS

- Included in several restoration plans:
 - 1993 Louisiana Coastal Restoration Plan
 - 1998 Louisiana Coast 2050 Report
 - 1999 Mississippi River Sediment, Nutrient and Freshwater Reintroduction Study
- 2000-2001 CWPPRA Phase 0 and 1
- 2004 Louisiana Coastal Area Plan (Hope Canal)
- 2012, 2017, 2023 Coastal Master Plans



CAUSES OF SWAMP DECLINE

HYDROLOGIC ALTERATION

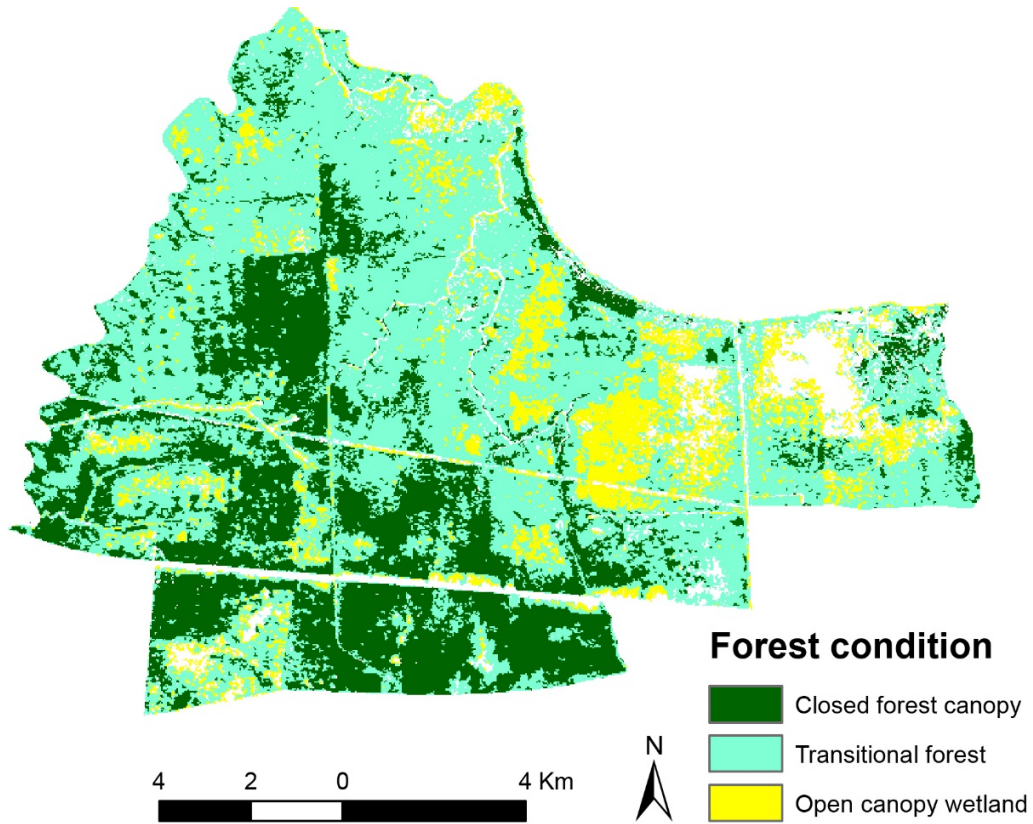
SALTWATER INTRUSION

LACK OF REGENERATION

- ❖ 1814 - Andrew Jackson blockade of Bayou Manchac at Mississippi River
- ❖ 1826 - State of Louisiana made permanent, cut off main source of freshwater and sediment
- ❖ 1900 – 1920 - Clearcutting of swamp
- ❖ 1927 - Great Flood, MR&T – USACE levees



WETLAND LOSS & HABITAT CHANGE



4,991 ha
Closed forest canopy



9,672 ha
Transitional forest



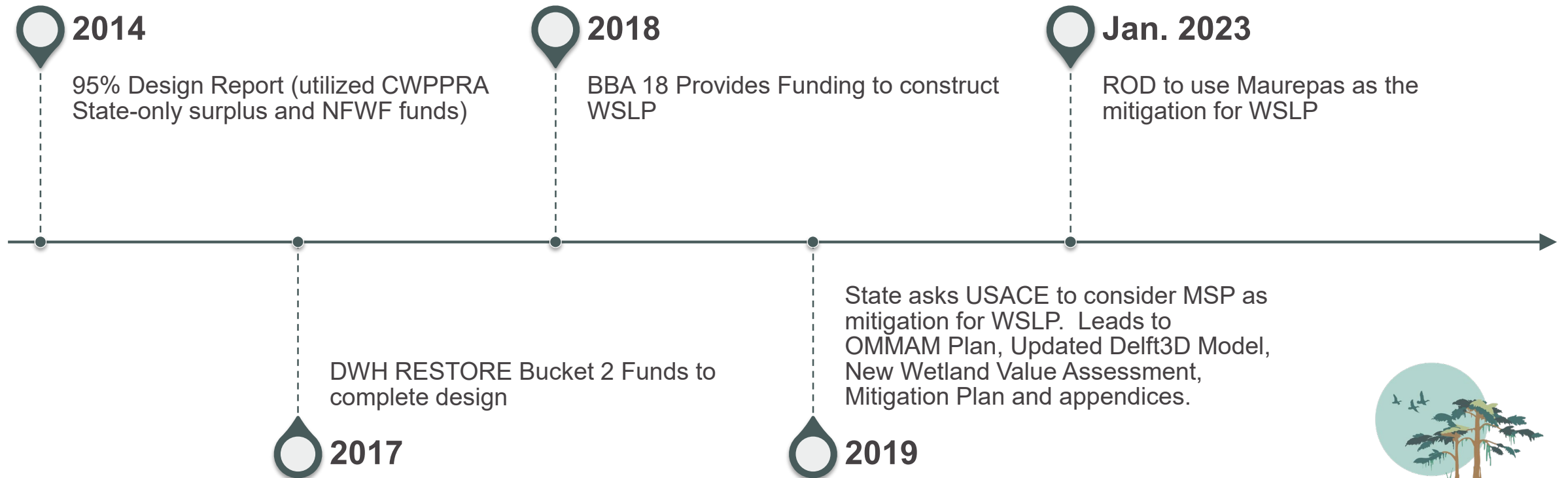
1,920 ha
Open canopy wetland (marsh)



WEST SHORE LAKE PONTCHARTRAIN INTEGRATION



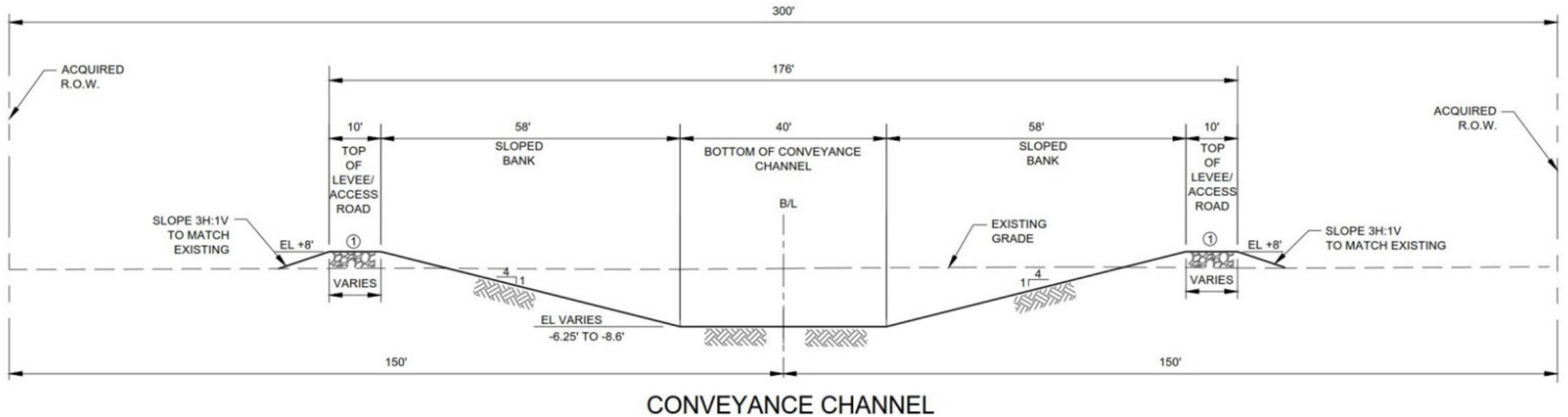
WSLP INTEGRATION



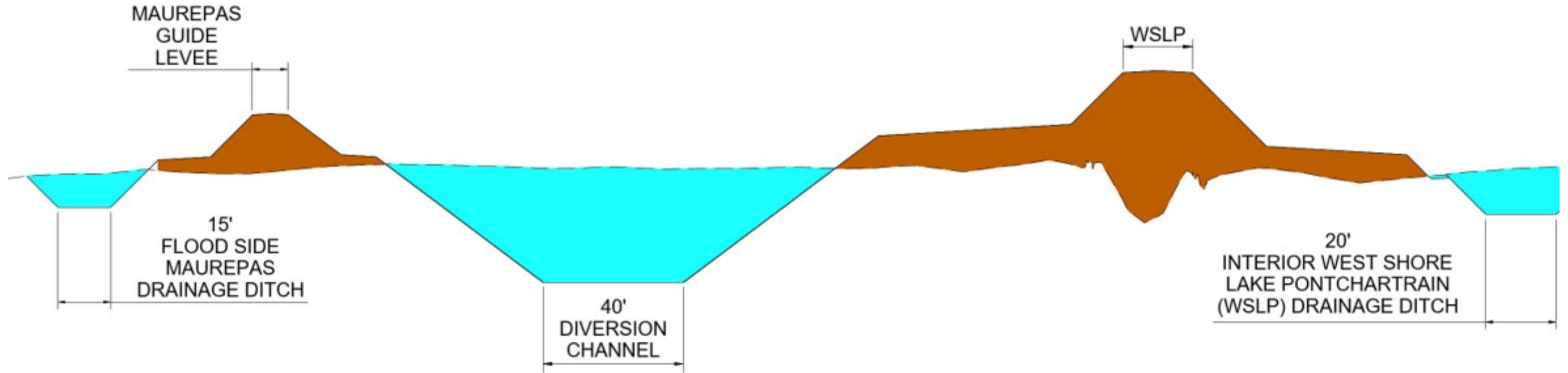
WSLP INTEGRATION



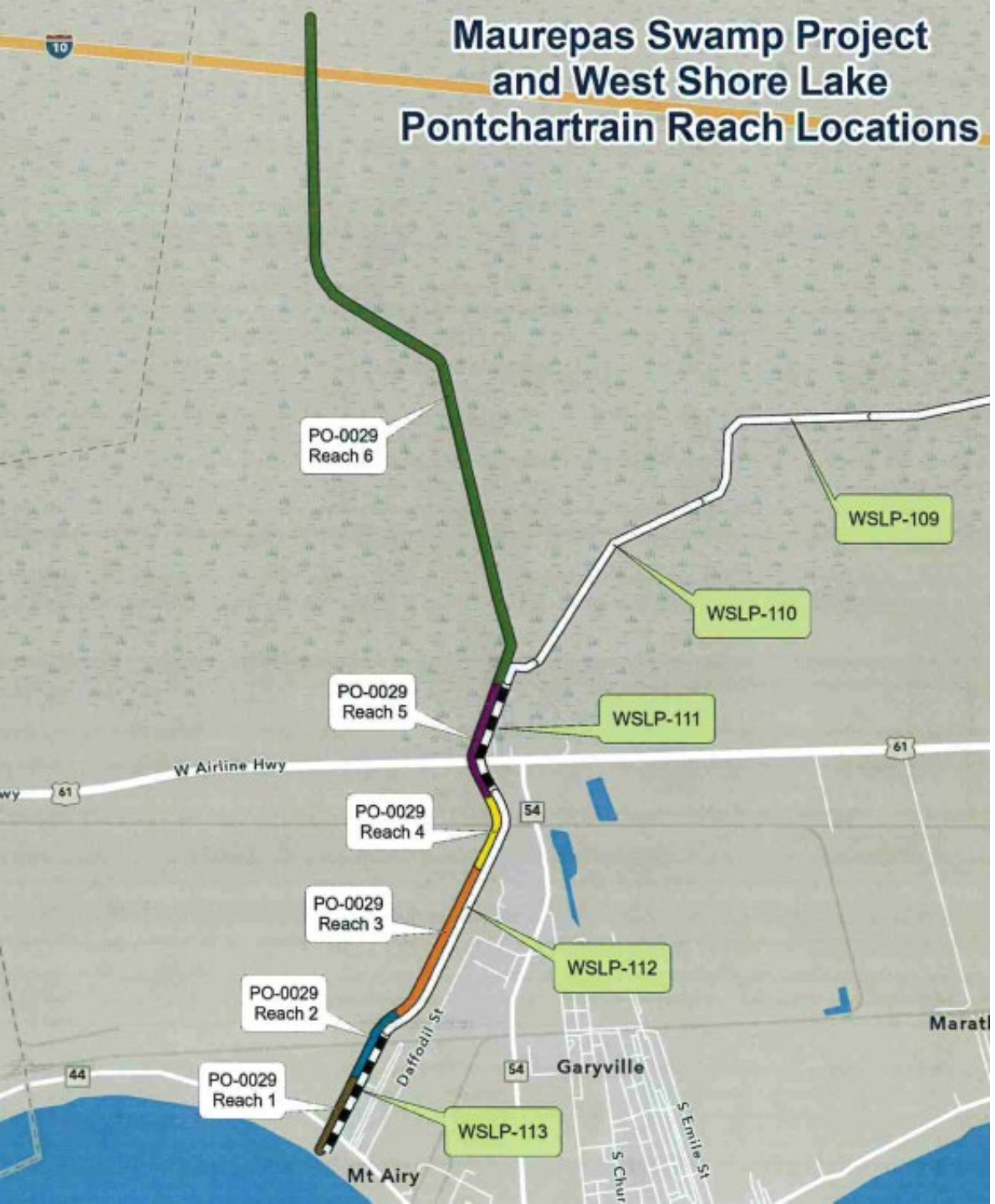
WSLP INTEGRATION



WSLP INTEGRATION



Maurepas Swamp Project and West Shore Lake Pontchartrain Reach Locations



CONSTRUCTION TIMELINE

Reach	Description	Construction
1, 2, & 3	<ul style="list-style-type: none"> Intake Headworks River Road Crossing CN Railroad Crossing Channel / Levee Section 	Feb 2027 – May 2030
4 & 5	<ul style="list-style-type: none"> Airline Highway Bridge CPKC Rail Crossing Channel/Levee Section 	Aug 2027 – Jan 2030
6 Phase 1	<ul style="list-style-type: none"> Hope Canal Dredging 	2024-2026
6 Phase 2	<ul style="list-style-type: none"> Outfall Features Guide Levee Lift 	Dec 2026 – Oct 2028

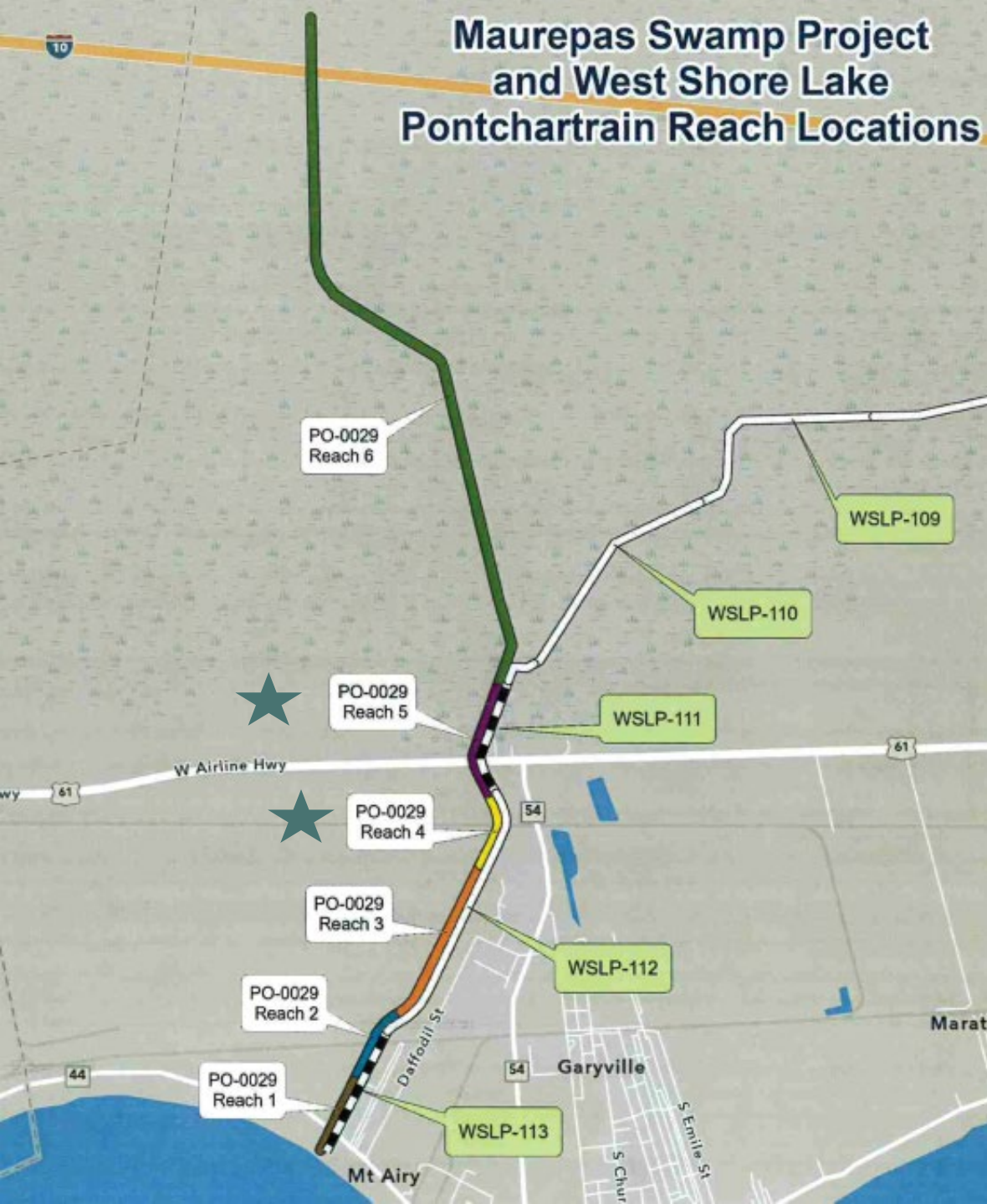
Maurepas Swamp Project and West Shore Lake Pontchartrain Reach Locations



REACH 1, 2, & 3

Reach	Description	Construction
1, 2, & 3	<ul style="list-style-type: none"> Intake Headworks River Road Crossing CN Railroad Crossing Channel / Levee Section 	Feb 2027 – May 2030
Construction Elements	<ul style="list-style-type: none"> Mississippi River Temporary Cofferdam Highway 44 Raise Intake structure Sediment Basin Drainage Channel excavation Levee construction Culverts Rail crossing 	
Construction Activities	<ul style="list-style-type: none"> Excavation Pile Driving Road Work Earth Moving Concrete Pours Delivery of material and equipment 	

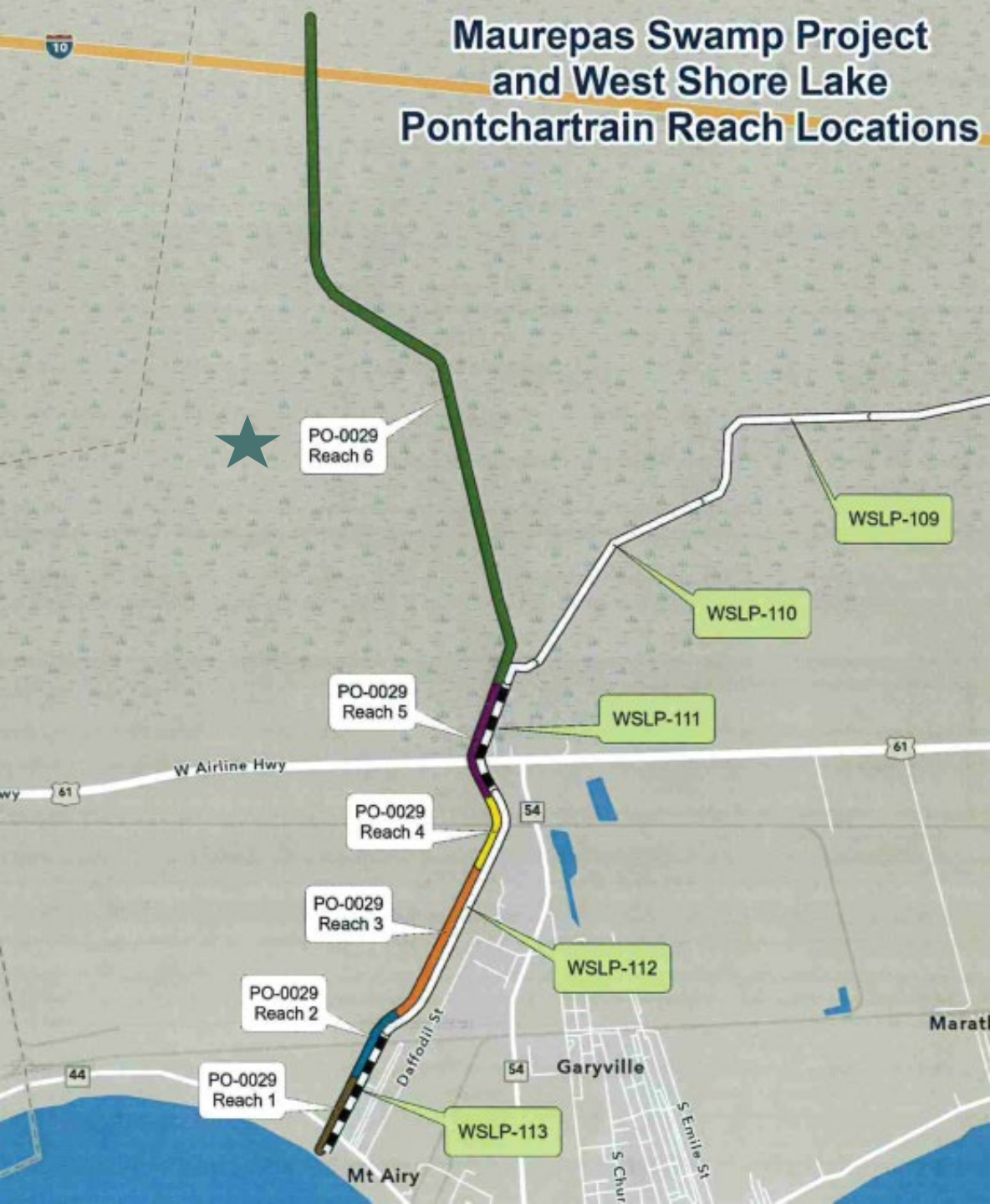
Maurepas Swamp Project and West Shore Lake Pontchartrain Reach Locations



REACH 4 & 5

Reach	Description	Construction
4 & 5	<ul style="list-style-type: none"> Airline Highway Bridge CPKC Rail Crossing Channel/Levee Section 	Aug 2027 – Jan 2030
Construction Elements	<ul style="list-style-type: none"> Mississippi River Temporary Cofferdam Highway 44 Raise Intake structure Sediment Basin Drainage Channel excavation Levee construction Culverts Rail crossing 	
Construction Activities	<ul style="list-style-type: none"> Excavation Pile Driving Road Work Earth Moving Concrete Pours Delivery of material and equipment 	

REACH 6 PHASE 1



Reach	Description	Construction
6 Phase 1	<ul style="list-style-type: none"> Hope Canal Dredging 	2024 - 2026
Construction Elements	<ul style="list-style-type: none"> Hope Canal Dredging 	
Construction Activities	<ul style="list-style-type: none"> Dredging Excavation Culvert and valve installation Delivery of material and equipment 	

Maurepas Swamp Project and West Shore Lake Pontchartrain Reach Locations



REACH 6 PHASE 2

Reach	Description	Construction
6 Phase 2	<ul style="list-style-type: none"> • Outfall Features • Guide Levee Lift • Channel/Levee Section 	Dec 2026 – Oct 2028
Construction Elements	<ul style="list-style-type: none"> • Hope Canal Dredging • Boat Ramp • Outfall Control Features 	
Construction Activities	<ul style="list-style-type: none"> • Dredging • Excavation • Culvert and valve installation • Delivery of material and equipment 	

REACH 6 PHASE 1 CONSTRUCTION PROGRESS











CONNECT WITH US!



@LOUISIANACPRA



VIDEO

OUR LADY OF BLIND RIVER

QUESTIONS?

Our Lady
of the
Blind River

THANK YOU



RIVER REINTRODUCTION INTO MAUREPAS SWAMP