

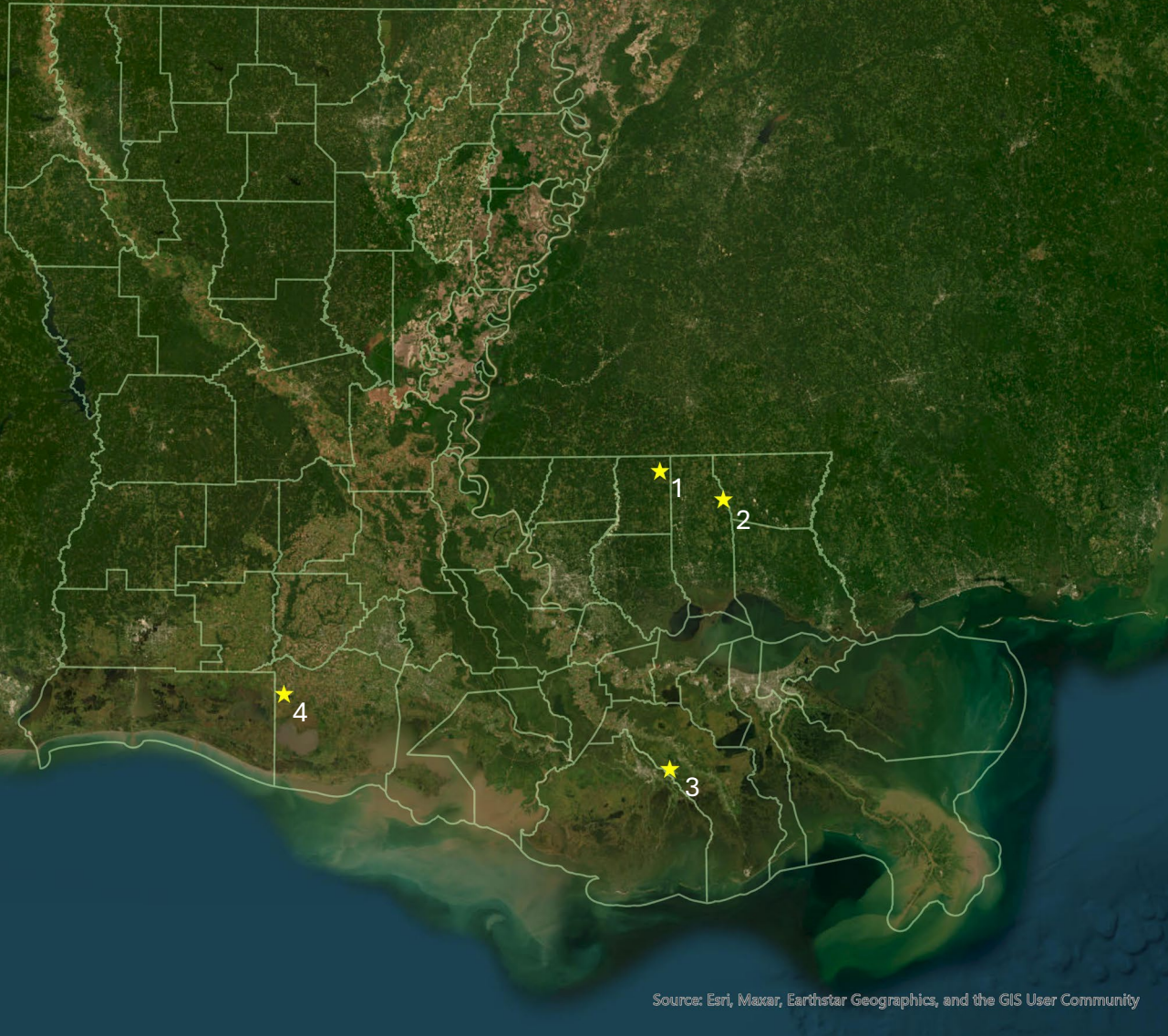


USDA NRDA NUTRIENT REDUCTION PROJECT UPDATE

Jon Morton

June 17, 2026

USDA Nutrient Reduction Project Locations



Source: Esri, Maxar, Earthstar Geographics, and the GIS User Community

-
- #1 - St. Helena/Tangipahoa (dairy)
 - #2 - Washington (dairy)
 - #3 - Bayou Folsé (grazing/ag BMPs)
 - #4 - Winter Water Holding (rice/crawfish BMPs)

DEEPWATER HORIZON OIL SPILL

**LOUISIANA TRUSTEE IMPLEMENTATION
GROUP FINAL RESTORATION PLAN AND
ENVIRONMENTAL ASSESSMENT #4:
NUTRIENT REDUCTION (NONPOINT SOURCE)
AND RECREATIONAL USE**

JULY 2018



- Projects were funded through LA TIG RP/EA #4 at:

\$1.5 million – St.
Helena/Tangipahoa

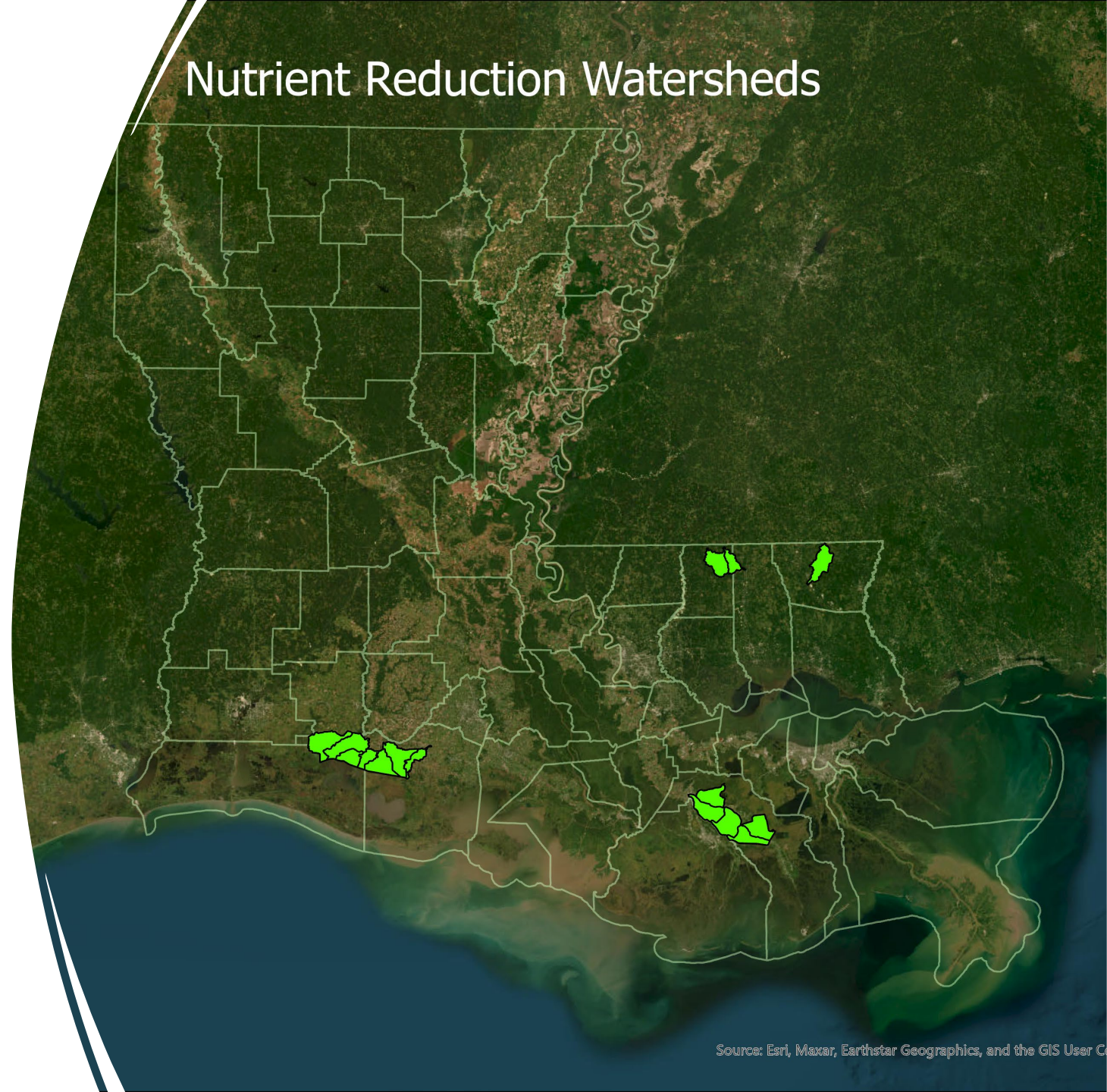
\$1.5 million – Washington

\$3 million – Bayou Folsé

\$3.5 million – Winter Water Holding

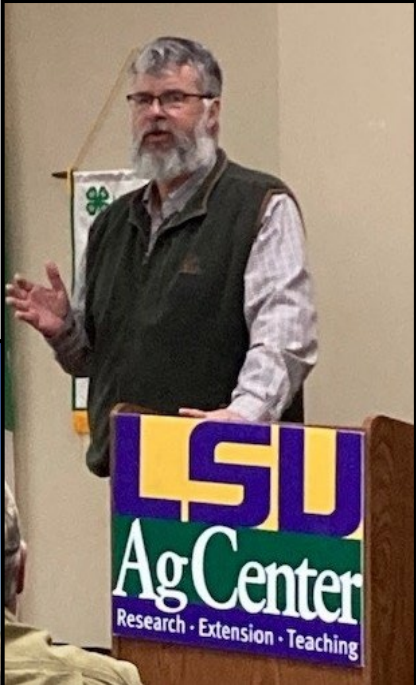
Nutrient Reduction Watersheds

-
- **Voluntary** program implemented at the watershed (HUC 12) level
 - Emphasizes the installation and execution of NRCS Conservation Practices designed to reduce nutrient and sediment levels
 - 100% cost-share opportunity



Outreach Efforts

- Face-to-face visits
- Text Message Blasts
- Social Media Posts
- Grower Meetings
- Rice Field Days
- Crop Advisers
- NRCS Field Offices

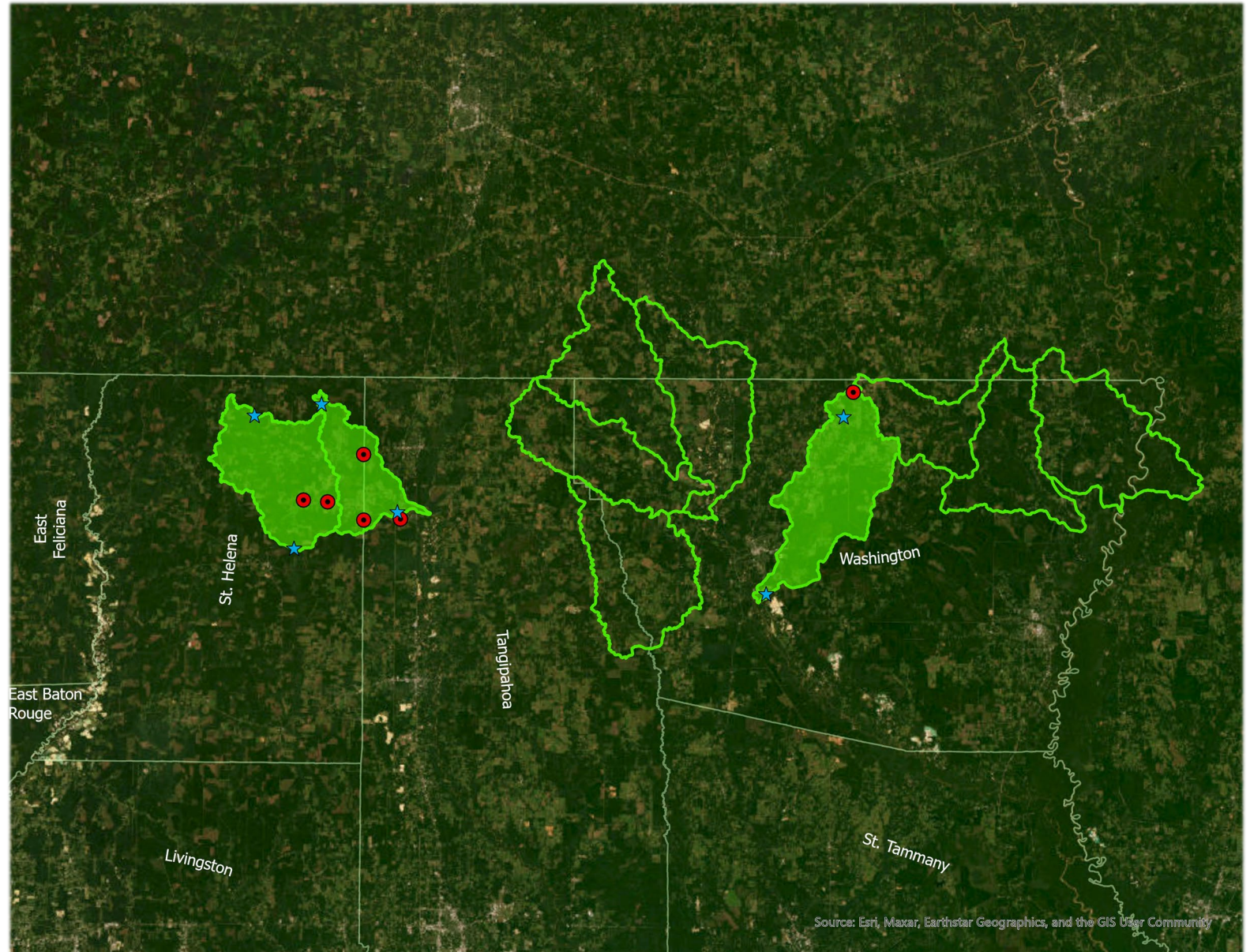




Dairy Project Update

St. Helena/Tangipahoa & Washington Parish Dairy Projects

- The restoration planned approved 10 watersheds (HUC 12)
- Active contracts in 3 of the watersheds
- In-stream water quality monitoring @ 6 sites
- Project Partners: Tangipahoa-St. Helena Soil & Water Conservation District & Louisiana Land Trust





Practice Name (Unit)

Cover Crop (AC)

Nutrient Management (AC)

Sprinkler System (AC)

Waste Separation Facility (NO)

Fence (FT)

Heavy Use Area Protection (SF)

Pumping Plant (NO)

Stream Crossing (NO)

Livestock Pipeline (FT)

Roofs and Covers (NO)

Waste Transfer (NO)

Watering Facility (NO)

Land Smoothing (AC)

Water Well (NO)

Waste Storage Facility (NO)

Roof Runoff Structure (NO)

Annual Forages for Grazing Systems (AC)

Waste Treatment Lagoon (NO)

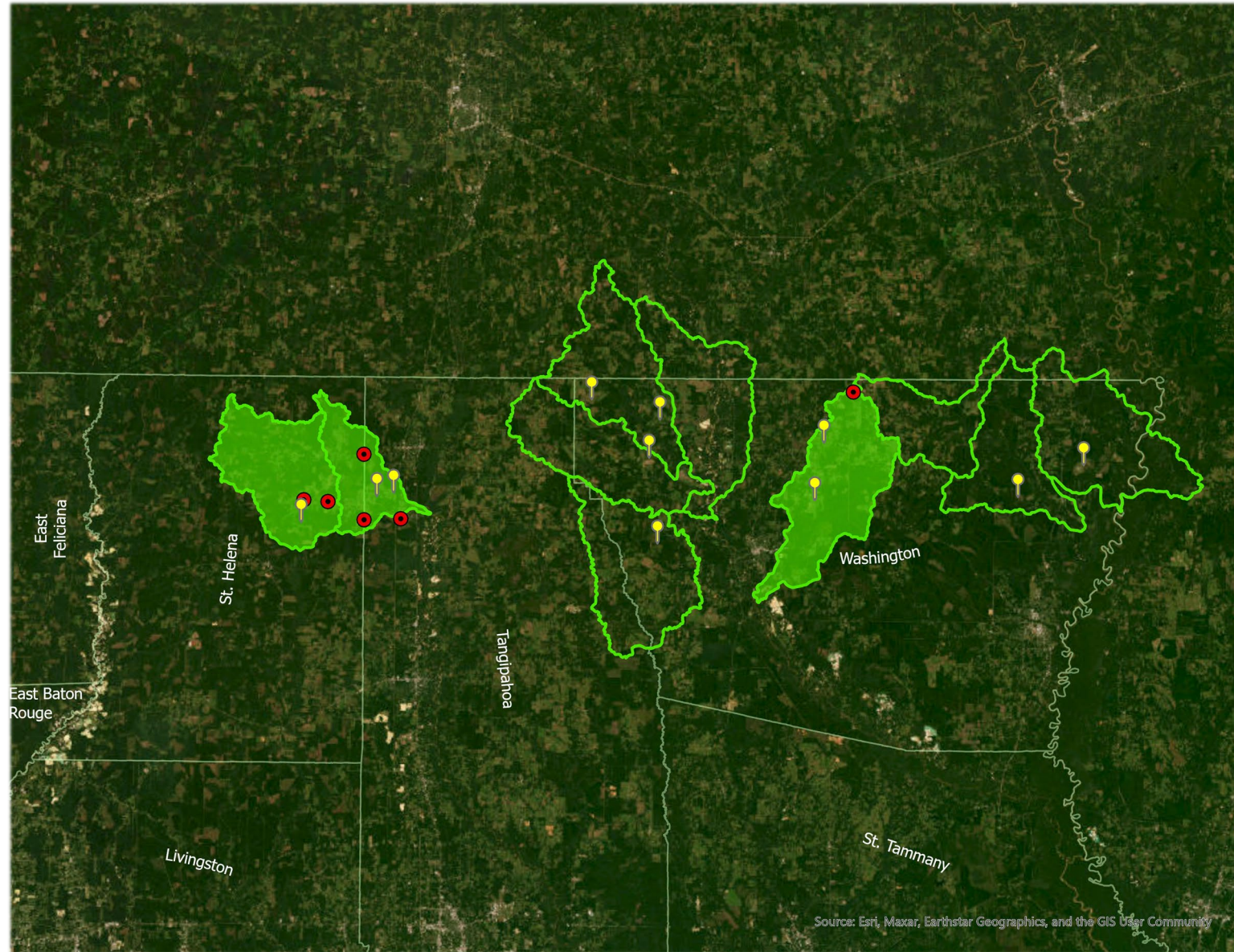
Underground Outlet (FT)

Critical Area Planting (AC)

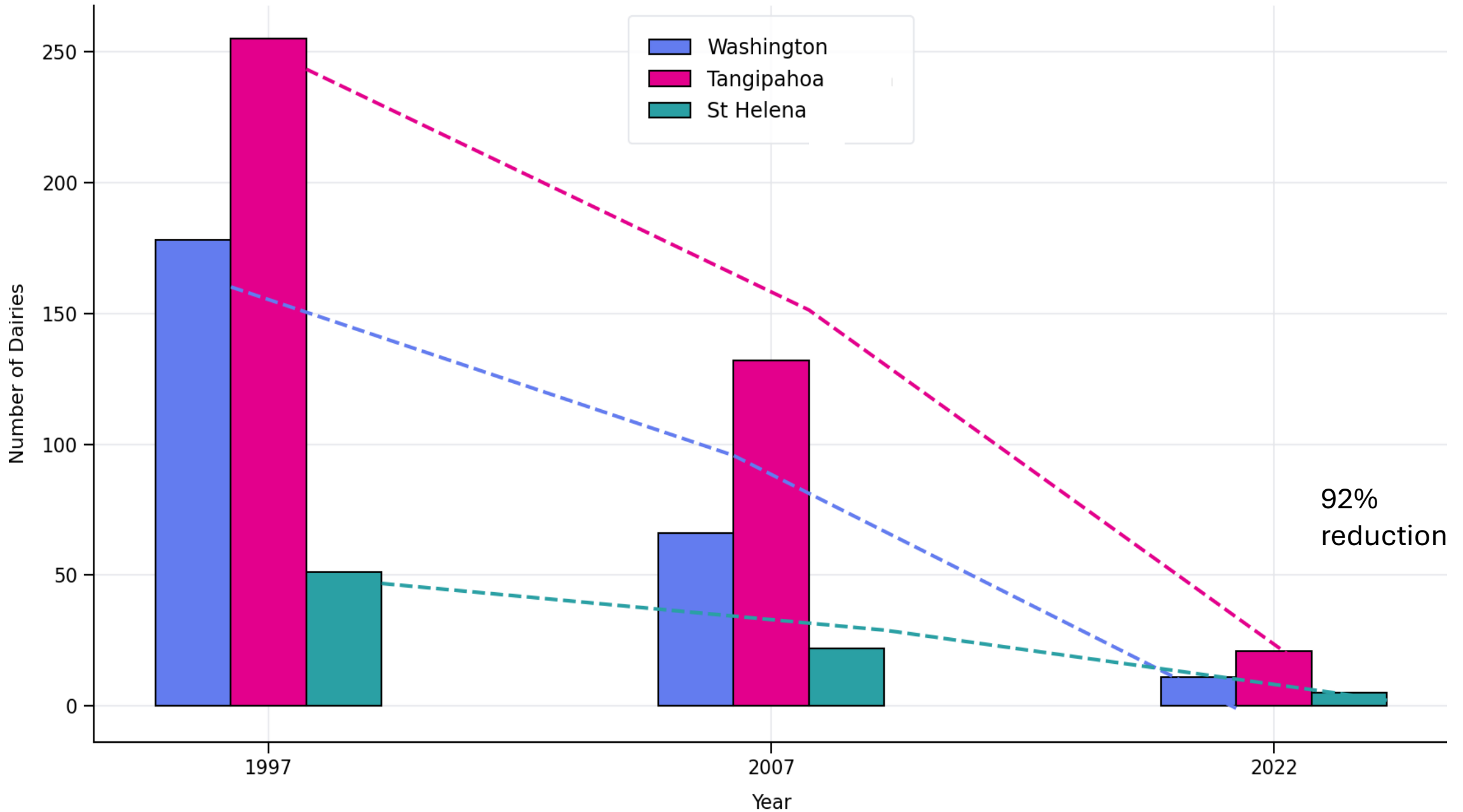
- USDA collaborates with enrolled producers to design and implement CPs/BMPs that focus on improving nutrient management planning, enhancing manure handling, and installing technologies for capture and treat runoff.
- The objective is to reduce off-farm impacts within the watershed while advancing on-farm management efficiency and sustainability.

St. Helena/Tangipahoa & Washington Parish Dairy Projects

- USDA will be seeking LA TIG approval for an additional \$2 million to expand the project
- 11 unfunded applications are being reviewed by field office staff
- Water quality monitoring will be expanded into new watersheds



Number of Dairies per Parish (1997 – 2022)

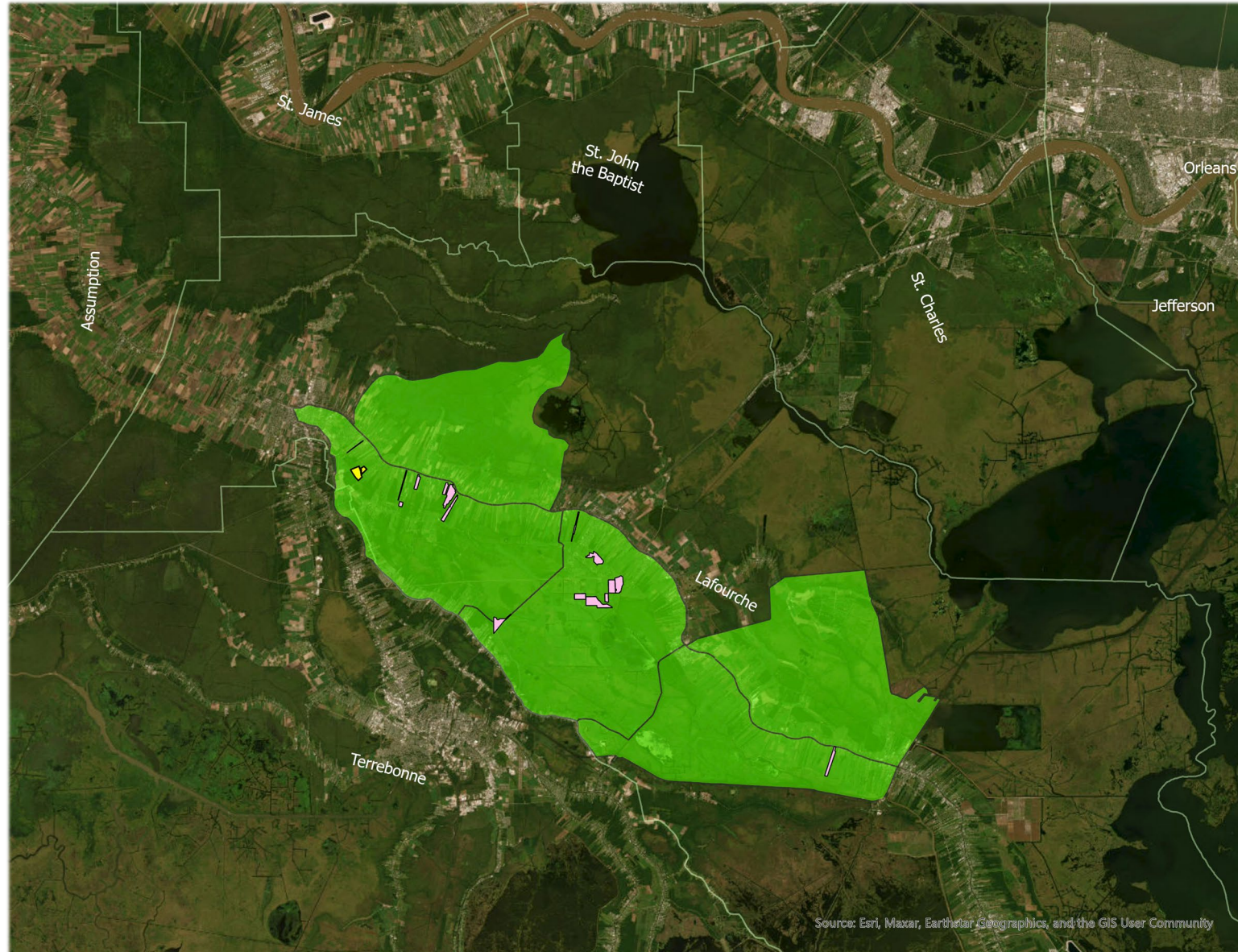




Bayou Folse

Cropland and Grazing BMPs

- 5 approved watersheds
- Active contracts totaling 1,366 acres
- Fencing (exclusion), Tree/Shrub Establishment, Livestock Shelters, Critical Planting Area, Nutrient Management, and Filtering Wetlands
- Project Partner: Lafourche-Terrebonne Soil and Water Conservation District
- In-stream water quality monitoring





Winter Water Holding

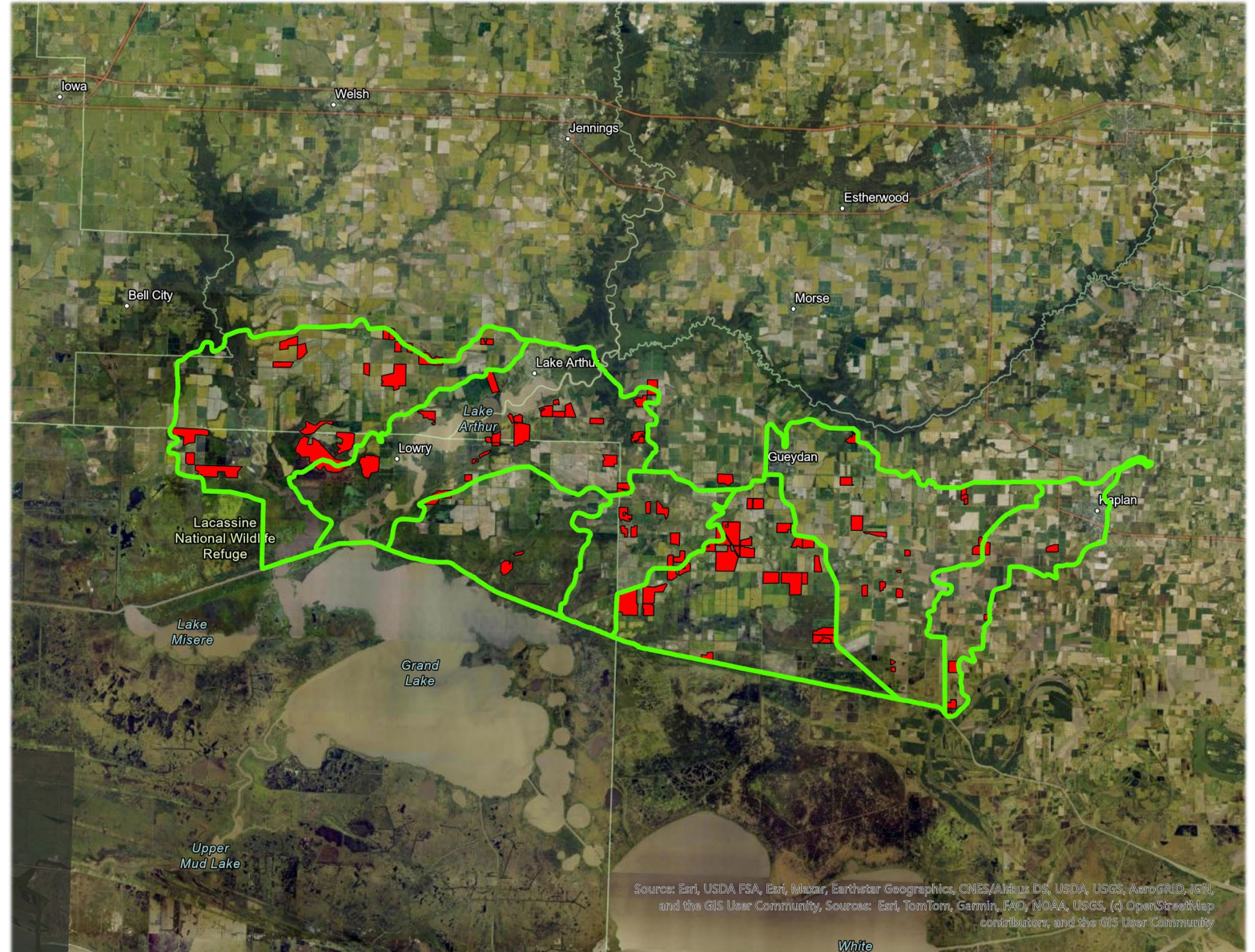
BMPs and Winter Water Holding

- 7 priority watersheds



BMPs and Winter Water Holding

- 7 priority watersheds
- 80 producer contracts totaling 13,993 acres



BMPs and Winter Water Holding

- 7 priority watersheds
- 80 producer contracts totaling 13,993 acres
- Installed practices focus on water conservation, drainage water management, nutrient management, and migrating bird habitat
- Project Partner: Ducks Unlimited



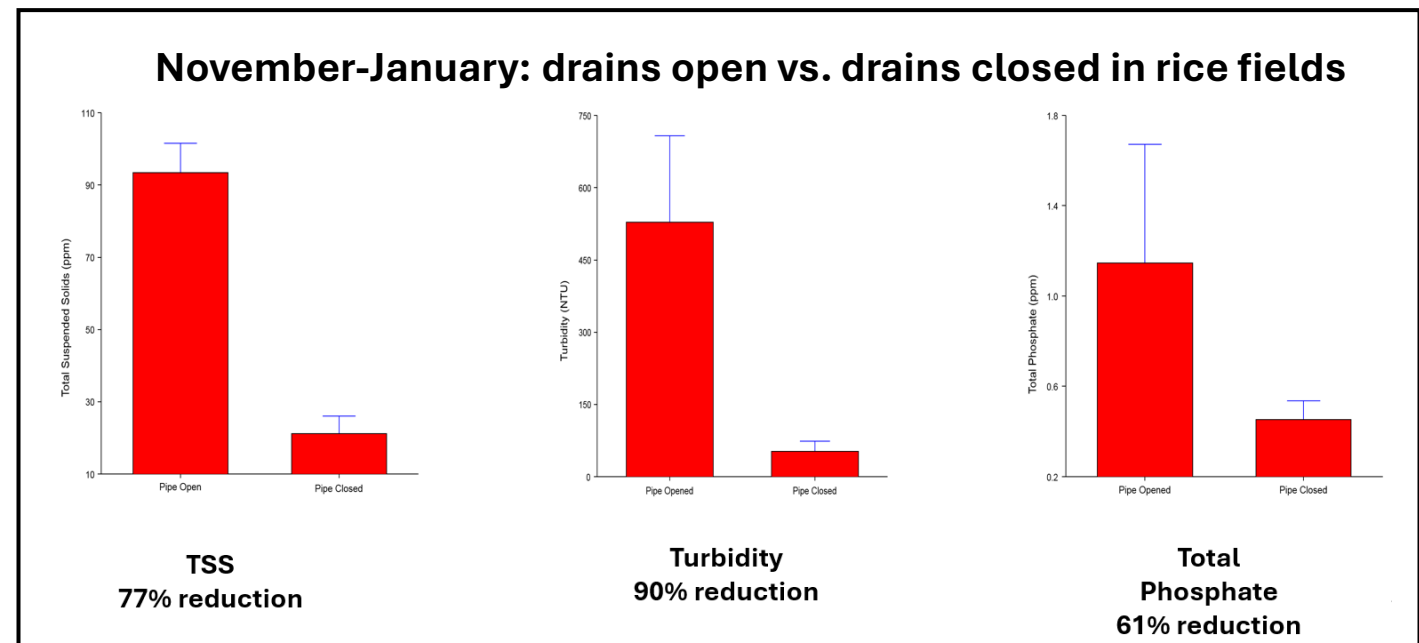
Winter Water Holding
Cover Crop (AC)
Grade Stabilization Structure (NO)
Irrigation Land Leveling (AC)
Irrigation Water Management (AC)
Nutrient Management (AC)
Pest Management Conservation System (AC)
Pumping Plant (NO)
Seasonal Water Management for Wildlife (AC)
Structure for Water Control (NO)
Wetland Wildlife Habitat Management (AC)



BMPs and Winter Water Holding

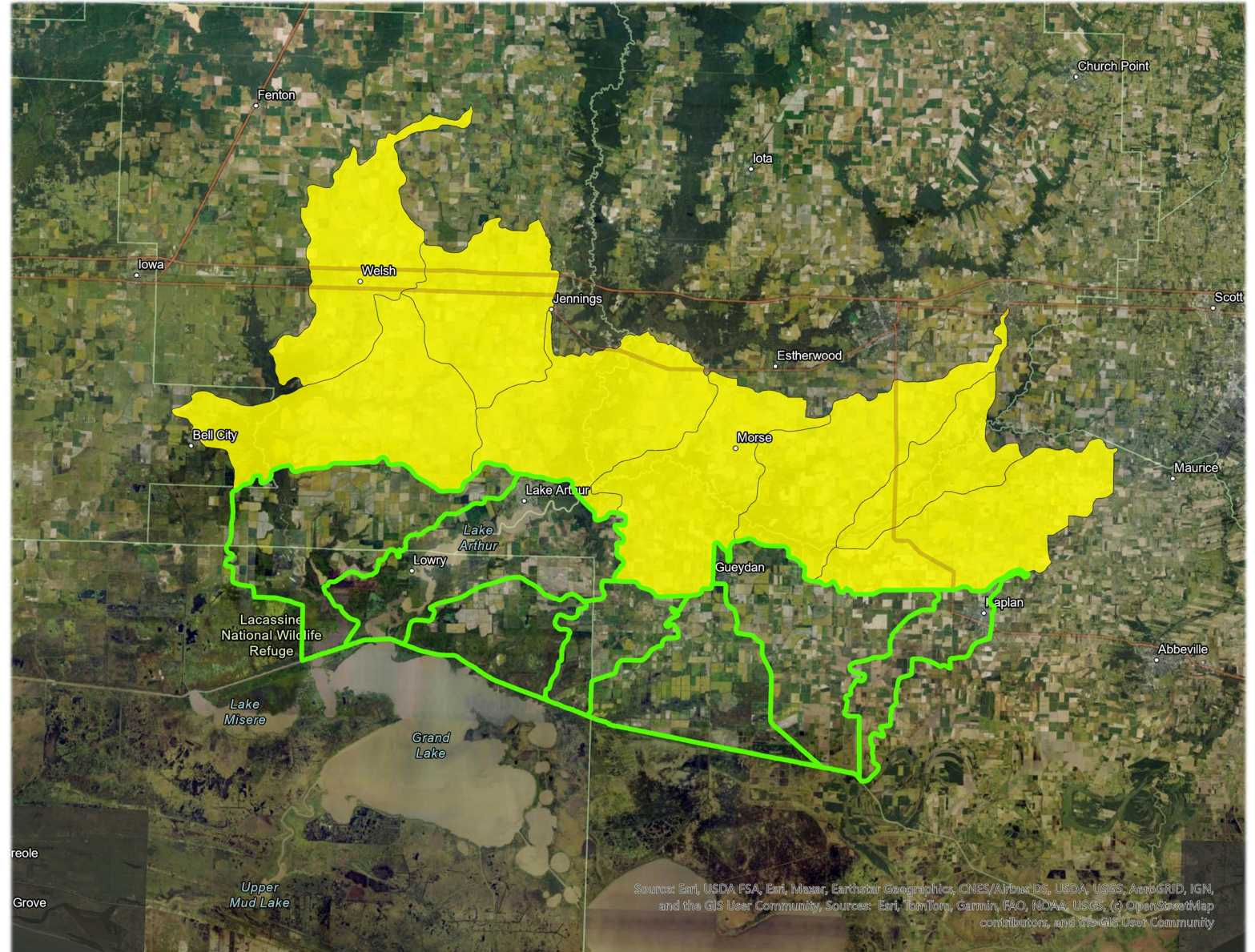


- 7 priority watersheds
- 80 producer contracts totaling 13,993 acres
- Installed practices focus on water conservation, drainage water management, nutrient management, and migrating bird habitat
- Water Quality Monitoring



LA TIG RP/EA #9 Proposal

- Expand current project to 8 additional watersheds in Vermillion, Acadia, and Jefferson Davis Parishes
- Estimated cost of ~\$5 million
- Rice/Crawfish producer demand for the program is high



A wide-angle photograph of a rice paddy field at sunset. The sun is a bright, glowing orb in the upper right, casting a golden light across the sky and the water. The rice plants are arranged in neat rows, and their long, thin leaves are reflected in the calm water. The horizon is flat, with a line of trees visible in the distance. The overall mood is peaceful and contemplative.

Questions?