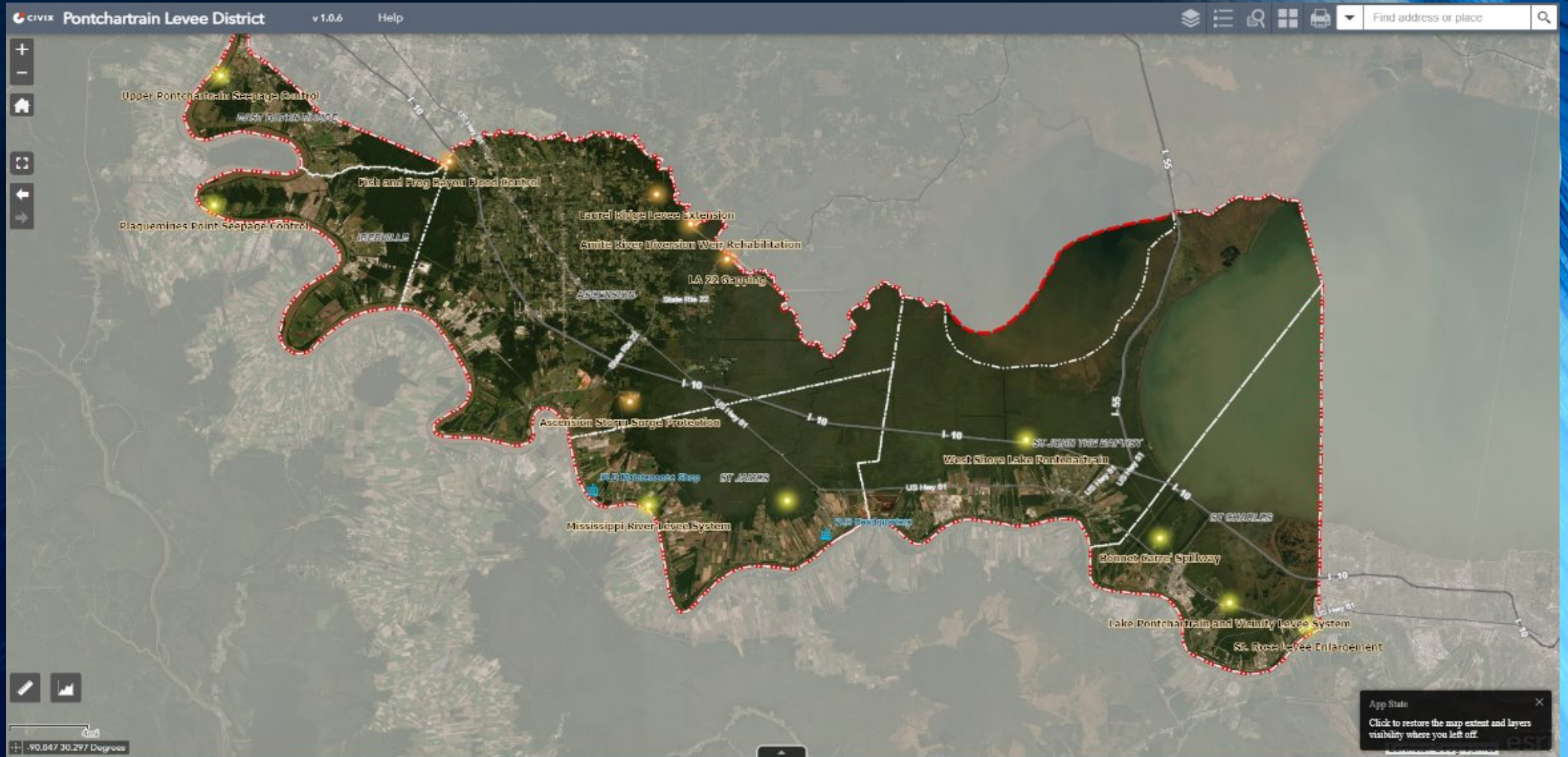




Pontchartrain Levee District Multi-Jurisdictional Overview and Current Projects

Pontchartrain Levee District
www.leveedistrict.org

Pontchartrain Levee District Jurisdiction



Board of Commissioners and Support Staff

Senecca D. Boudreaux, President
Representing St. James Parish

Randy T. Clouatre, Sr., Vice President
Representing Ascension Parish

Kyle E. Grace
Representing Iberville Parish

Beverly J. Irvin
Representing CN Railroad

Joseph "Harold" Jarreau
Representing Canadian National Railroad

Aaron Pourciau
Representing St. Charles Parish

Vacant
Representing East Baton Rouge Parish

Charles "Chuck" J. Bazile, III
Representing St. John the Baptist Parish

Kevin P. Hebert
Commissioner At-Large

Monica Salins Gorman
Executive Director

Dwight D. Poirrier
Special Counsel

Joe Sevario
Executive Assistant to the Board

Pontchartrain Levee District Budget

The Pontchartrain Levee District's (PLD) current budget (July 1, 2025- June 30, 2026) is derived principally from 3.53 mills ad valorem tax from all of the 6 east bank parish areas and a limited amount of prior year(s) interest and royalties. (*2026-2027 Budget was adopted March 2026)

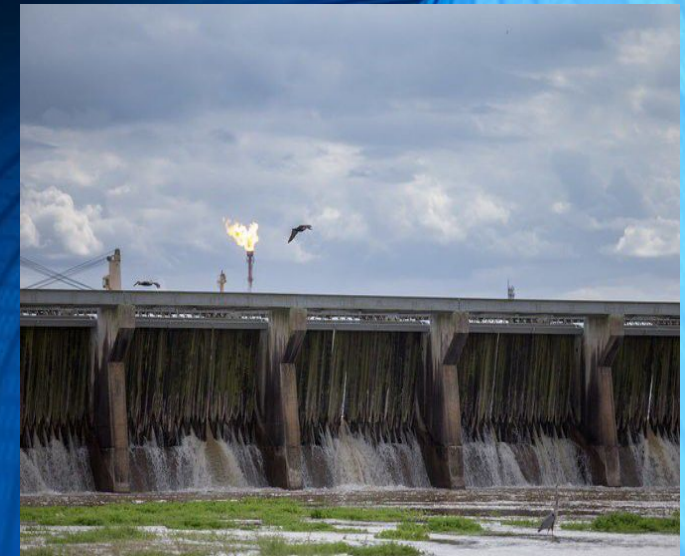
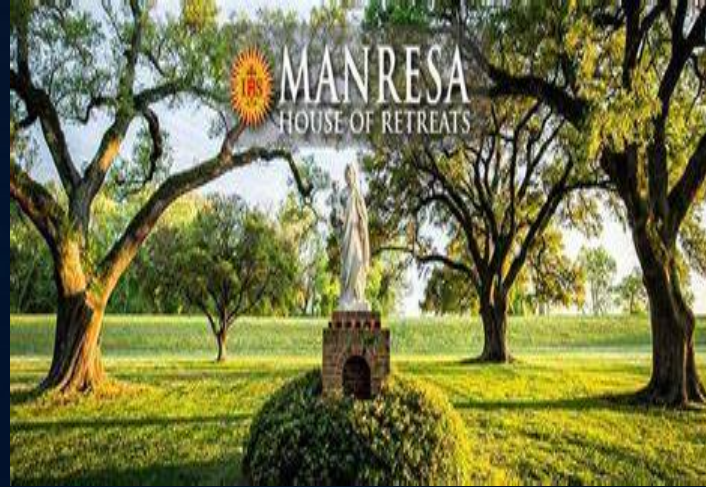
	ACTUAL		
<u>LOCAL SOURCES</u>	AS OF	BUDGET	BUDGET
	<u>6/30/2025</u>	<u>2025—26</u>	<u>2026-27</u>
<u>AD VALOREM TAXES</u>			
Ascension	6,796,509	\$ 6,816,910	7,634,479
East Baton Rouge	1,631,507	1,638,912	1,664,256
Iberville	1,176,750	1,178,422	1,314,350
St. Charles	4,858,399	4,933,635	4,906,793
St. James	1,370,900	1,434,802	1,604,928
St. John the Baptist	3,142,724	3,360,284	3,052,156
Total	18,976,789	19,362,965	20,176,962

Mainline Mississippi River Levees

Pontchartrain Levee District is responsible for over 118 miles of mainline Mississippi River levee for all 6 parishes along the east bank

East Baton Rouge	14.5 miles
Iberville	28 miles
Ascension	19 miles
St. James	24 miles
St. John	15 miles
St. Charles	18 miles

- Review and provide LONO (Letter of No Objections) for any and all work, specifically excavations, within 1500' of the mainline Mississippi River levee; and within 300' of a Hurricane Protection Levee
- Provide quarterly and annual inspections and repairs with USACE and CPRA
- Patrol the levee system daily, assuring the integrity of this system, as part of the federal Mississippi River & Tributaries project, is not compromised in any way



USACE/PLD PLANNING STAGES

- **Mainline Mississippi River Levee Lifts/Enlargements DRSAA (Disaster Relief Supplemental Appropriations)**
 - Scope: Remove existing levee armoring, elevate levees, and replace armoring
 - Estimated Cost: UNKNOWN
 - Timeline: To Be Determined
 - These are areas that USACE has indicated that these levees need to be raised an average of 1.0-2.0 feet, extending over the length of the work item, with a land side shift of the centerline of the levee.
 - St. Rose- St. Charles Parish
 - New Sarpy- St. Charles Parish
 - Plaquemine- Iberville Parish
 - Carville- Iberville Parish
 - Marchand- Ascension Parish
 - Ben Hur Road- East Baton Rouge Parish
 - Mt. Airy- St. John the Baptist Parish
 - Romeville/College Point- St. James Parish
 - Romeville- St. James Parish
 - Belmont- St. James Parish
 - Welham - St. James Parish

Recently Completed, Current and Planned Projects- Mainline Mississippi River levee



St. Gabriel Levee Enlargement
Iberville Parish, completed in 2018



Upper Pontchartrain Seepage Control
East Baton Rouge Parish, completed in
2024



Plaquemine Point Seepage Control
Iberville Parish, completed in 2025



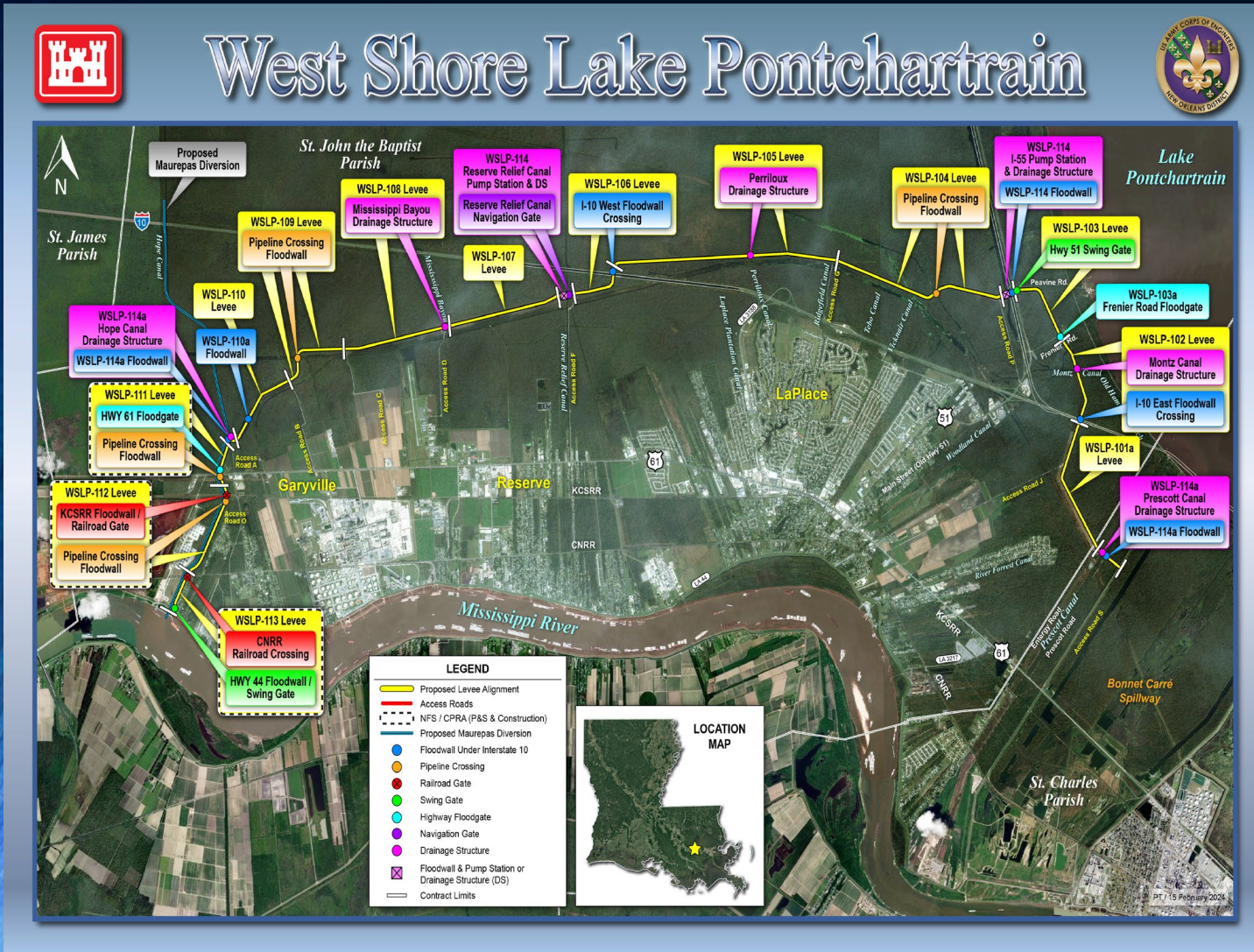
St. Rose Levee Enlargement
St. Charles Parish, under construction



Belmont Levee Enlargement
St. James Parish, planned

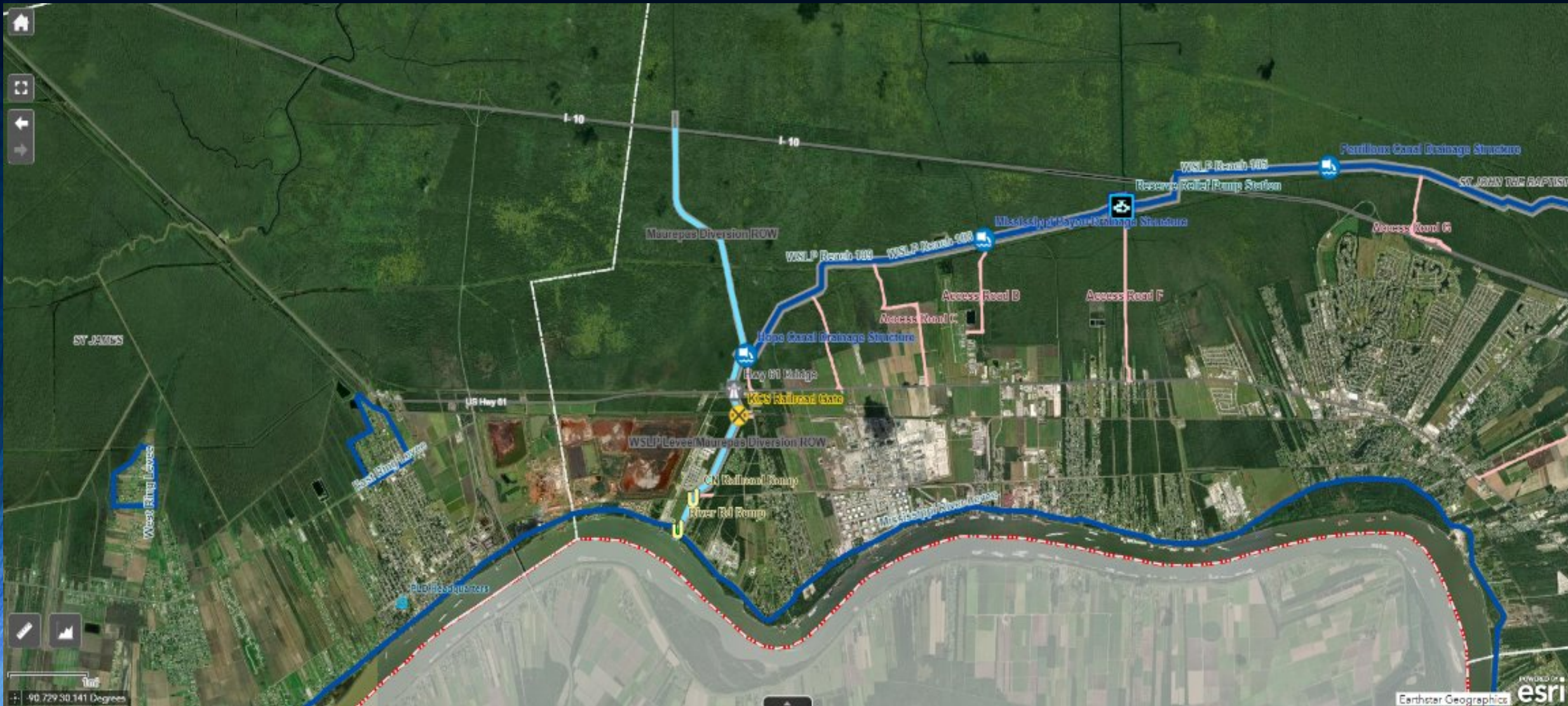
HSDRRS PROJECTS

West Shore Lake Pontchartrain Overview



- Pontchartrain Levee District is proud to be a part of one of the largest USACE Civil Works projects in the State of Louisiana. The entire West Shore Lake Pontchartrain (WSLP) Project is located in southeast Louisiana on the east bank of the Mississippi River in St. Charles, St. John the Baptist and St. James Parishes.
- Project authorized in 1971; Funding for this project was allocated as part of the BBA-18 funding, receiving initially \$760 million. Increased costs as of July 2023 now total \$ 3.7 Billion
- 18.5 miles of earthen levees
- 11 Flood Walls
- 7 Drainage Structures
- 5 Gates
- 1 Bridge
- 2 Pump Stations
 - Hwy. 55 PS
 - Reserve Relief PS
- 14 miles of Access Roads

River Reintroduction to Maurepas Swamp Project

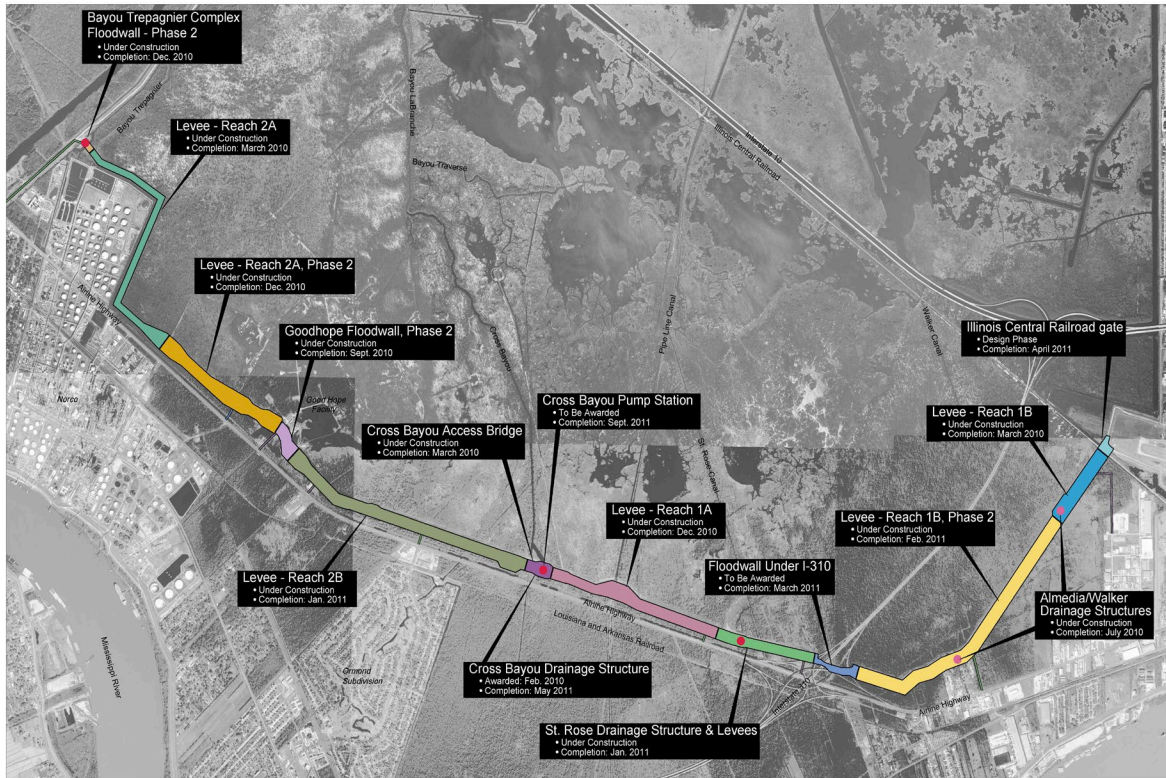


West Shore Lake Pontchartrain-Features Common to the Authorized Project & St. James Connector Levee

- Identified initial contracts:
 - **WSLP-201: Gramercy Levee**
 - **WSLP-202: Grand Point Levee**
- Path forward for additional contracts is contingent on future decision points:
 - Economic justification
 - Discretionary authorization for change to project
 - Funding ability
 - St. James Parish Connector Levee- permit secured by SJP earlier this year



Lake Pontchartrain and Vicinity (LPV), Hurricane and Storm Damage Risk Reduction System (HSDRRS) St. Charles Parish (East Bank)



LAKE PONTCHARTRAIN AND VICINITY, LOUISIANA PROJECT
NORTH OF AIRLINE HIGHWAY, ST. CHARLES PARISH

- The LPV/ Hurricane and Storm Damage Risk Reduction System (HSDRRS) provides protection for the East Bank of St. Charles Parish and also protects Highway 61, a major hurricane evacuation route for thousands of people. The HSDRRS has been constructed to a 100-year level of protection and is now substantially complete.

- Approximately 8.1 miles of levee
- 5 Floodwalls
- 4 Drainage Structures
- 2 Access Bridges- Pre-Cast Concrete
- 1 Railroad Hydraulic Swing Gate
- 2 Pump Stations
 - Bayou Trepagnier PS
 - Cross Bayou PS

USACE/PLD PLANNING STAGES

- **St. Charles Parish HSDRRS Levee Lifts**
 - Scope: Remove existing levee armoring, elevate levees, and replace armoring
 - Estimated Cost: \$36 to \$39 million (50% increase to 2018 cost estimates)
 - Timeline: 2028-2030



**Other projects of interest led by
Pontchartrain Levee District
through various partnerships with
entities such as USACE, CPRA, or
local government that you will
hear about today are...**

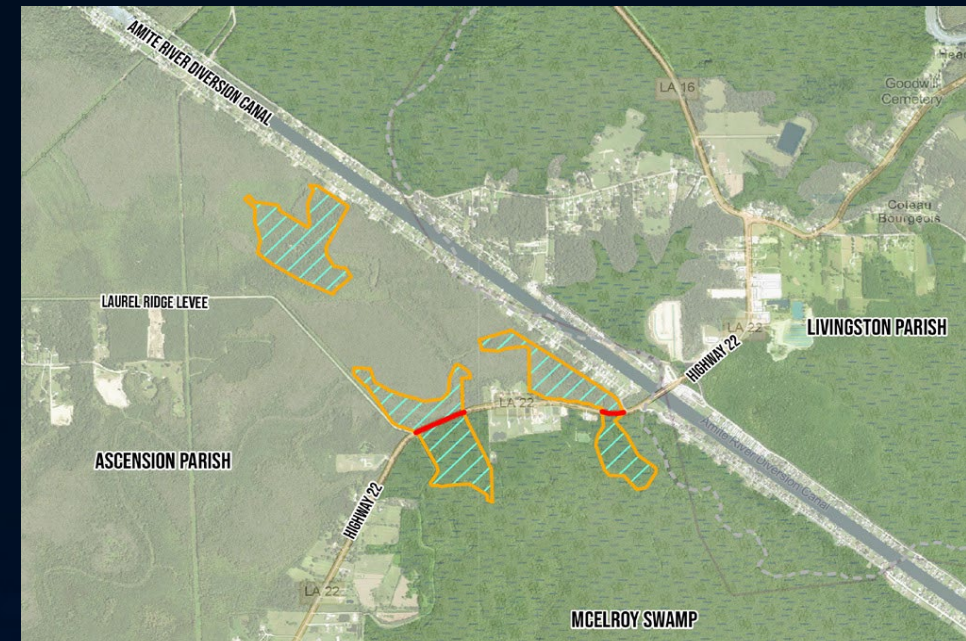
*These are just a few of the projects worked on by PLD since 2004

Other Pontchartrain Levee District Led Projects

1. Laurel Ridge Levee Extension (Ascension)
 - Construction completed January 2026
2. Amite River and Tributaries Study (Ascension)
 - Included study along Bayou Manchac
 - Resulted in the recommendation and construction of upgrades to the Alligator Bayou Locks and the Fish Bayou Locks
3. Fish Bayou Control Structure (Ascension)
 - Completed in 2023
 - Received an ACEC-L and ACEC International Award
4. Amite River Diversion Canal Weir (Ascension)
 - ARBC held permit for project- transferred to Livingston
 - Project was transferred to ARBC, then Livingston, and has been placed on hold until further notice
5. LA 22 Gapping Project (Ascension)
 - PLD secured \$42 million through LWI for a project based on modeling efforts
 - Currently in design
6. Bayou Boyle Regional Detention (Ascension)
 - PLD modeled project to justify merits; turned project over to Gonzales in 2022; funded through Statewide Flood Control Program
7. Ascension Storm Surge (Ascension)
 - Partially funded through Capital Outlay
 - Currently in design
8. Bayou Manchac Regional Flood Ridge Reduction
 - Started at the request of the three impacted Parishes of East Baton Rouge, Iberville and Ascension, along with legislators and former Congressman Graves
 - Submitted various funding applications and submitted for permitting
9. Upper Amite River Restoration
 - Presented to CPRA and legislators in 2023.
 - Resulted in \$1.3 million to begin study; turned over to ARBC
10. Baton Rouge Seepage Control- USACE Contract
 - Expected to be turned over to PLD 2026

LA 22 Gapping Project

- Lead Agency: Pontchartrain Levee District (Permit Holder)
- Coordination with the Louisiana Department of Transportation and Development and the Office of Community Development
- Cooperative Endeavor Agreement (CEA) between the State of Louisiana through the Office of Community Development and the Pontchartrain Levee District (October 2021)
- Estimated Cost: \$42 million LWI Grant Funding/OCD
- Capital Outlay \$3.99 million
(for DOTD roadway improvements- PLD match 1/3- \$1.33M)



LA 22 Overview and Outcomes

- **Project Overview**

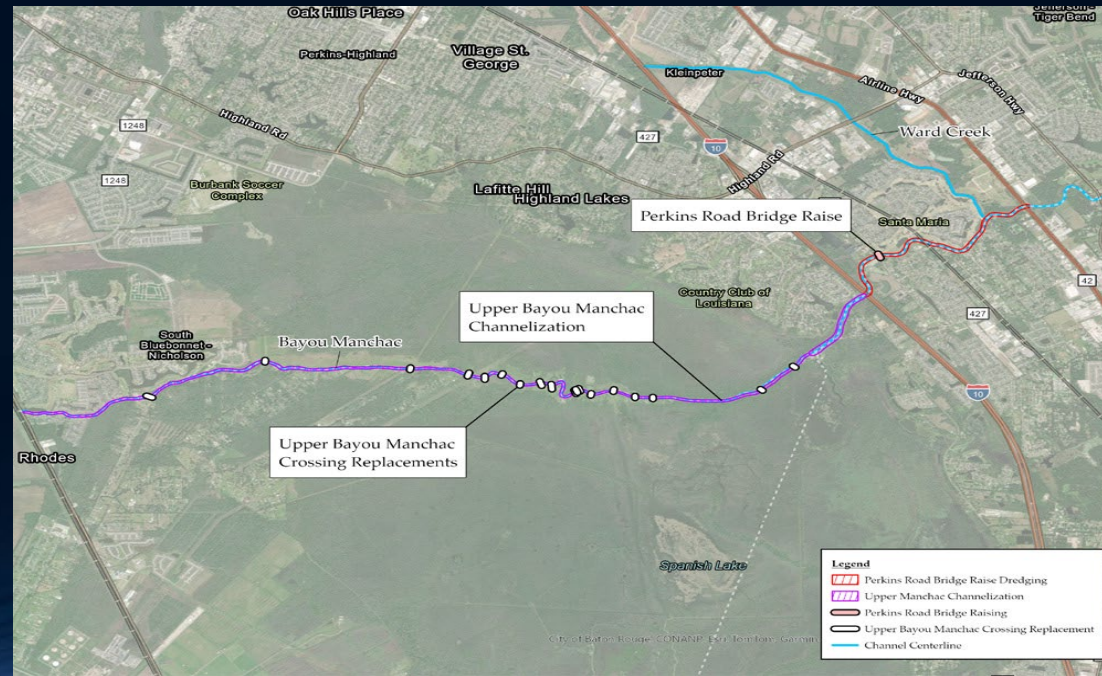
- Phase 1- Construction of two (2) bridges through LA Highway 22 in Ascension Parish near the Amite River Diversion Canal and raise the roadway between the bridges;
- Phase 2- Selective, minimal, floodplain excavation to create storage and promote exchange of flow to McElroy Swamp.
- 98% Final Plans were submitted to LA DOTD and OCD (Office of Community Development) on March 6, 2026. Waiting on permit approval from DENR. Once DENR approves then USACE will issue the mitigation letter.

- **Project Outcomes:**

- Reduce water surface elevation on the Amite River; restore flows into the McElroy Swamp; reduce water movement into inhabited areas; allow water to flow more efficiently out of the riverine system
- Timeline: 2026-2029

Bayou Manchac Regional Flood Risk Reduction Project- impacts to East Baton Rouge, Iberville, and Ascension Parishes

- Estimated Cost: \$42+- Million - Upper and Lower
- PLD began working on this effort in October of 2021 at the request of Parish Presidents from EBR, Ascension, and Iberville Parishes. PLD focused on 3 of the hardest hit areas of the August 2016 floods. Those floods led to the \$1.2 billion in federal funding for the State of Louisiana to address flooding concerns. As such, PLD developed the Bayou Manchac Regional Flood Risk Reduction Plan to investigate multiple projects within the Manchac Basin, while seeking funding, implementation, and consideration.



Bayou Manchac Regional Flood Risk Reduction Created Multiple Projects

Upper Bayou Manchac Channelization (PLD Project)- Clearing and snagging of Bayou Manchac from I-10 to its most upstream point on Highway 30 and excavation of Bayou Manchac from Alligator Bayou to the Interstate 10 crossing of Bayou Manchac. The project is in permitting and design. Construction is anticipated to begin in mid-2026. \$ 2.89M

Upper Bayou Manchac Crossing Replacements (PLD Project)- Removal and replacement of 22 culvert crossings along Bayou Manchac from Highway 30 to Alligator Bayou. The project is in permitting and design. Construction is anticipated to begin in mid-2026. \$ 2.2M

Perkins Road Bridge Raise (PLD Project)- Raising the existing Perkins Road Bridge to reduce occurrences of road inundation and impediments to the flow of Bayou Manchac as well as excavation of Bayou Manchac from Interstate 10 to Airline Highway. The project is in permitting and preliminary design. Construction is anticipated to begin late 2027. \$ 6.76M

Ward Overflow Channel (BREC Project) - Construction of an overflow weir and channel east of Ward Creek's existing outlet at Bayou Manchac. This channel will convey flow from Ward Creek to Bayou Manchac for rainfall events greater than a 10-year event, increasing flow conveyance from Ward Creek to Bayou Manchac. The channel will also be designed as a recreational channel during normal conditions. \$ 5.48M

Lower Bayou Manchac Channel Improvements (East Baton Rouge Parish Project)- Excavation of Bayou Manchac from its confluence with the Amite River to Airline Highway. \$ 27M

**Contact: Monica Salins Gorman
Executive Director
225-869-9721**

mgorman@leveedistrict.org

Website: www.leveedistrict.org

