



MICHAEL HARE, EXECUTIVE DIRECTOR



109 ACTIVE PROJECTS

33

73

3

PROJECT TYPE	CONSTRUCTION	E & D	PLANNING
HURRICANE PROTECTION (39)	13	24	2
MARSH CREATION (33)	6	27	
BANK STABILIZATION (1)		1	
RIDGE RESTORATION (3)	1	2	
SHORELINE PROTECTION (8)	3	5	
BARRIER ISLANDS/HEADLANDS (3)	1	2	
DIVERSIONS (1)	1		
HYDROLOGIC RESTORATION (7)	2	5	
EARTHEN TERRACES (2)		2	
RECREATIONAL USE (3)	2	1	
OTHER (9)	4	4	1



BID UPDATES

CURRENTLY ADVERTISING

West Belle Headland Repair

- *Advertisement - April 15, 2026*
- *Bid opening - June 2, 2026*

Sabine Refuge Marsh Creation Cycle II – Permanent Pipeline Inspection

- *Advertisement - April 23, 2026*
- *Bid opening - June 4, 2026*

Northwest Little Lake Marsh Creation, Increment 2 Project

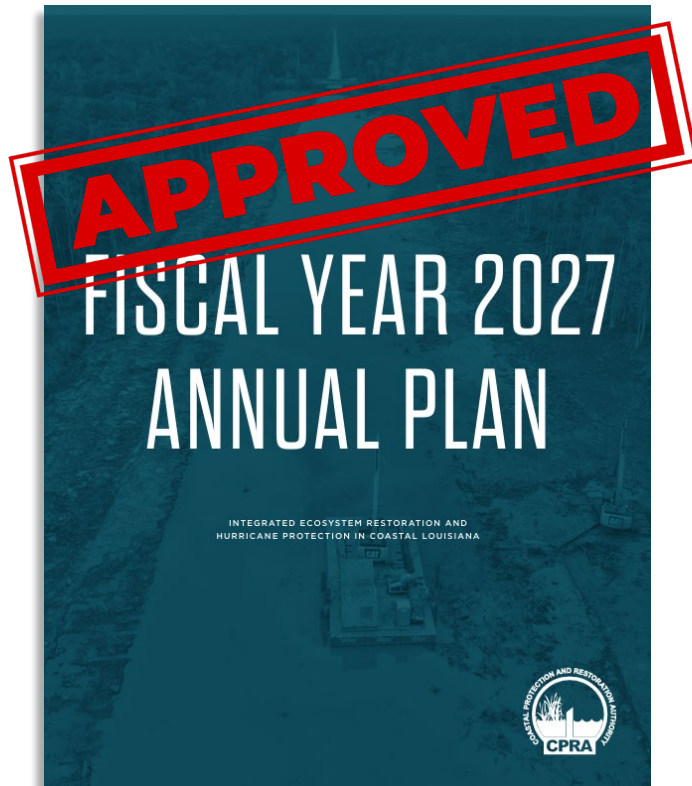
- *Advertisement - April 29, 2026*
- *Bid opening - June 16, 2026*

RECENTLY AWARDED

Grand Bayou Ridge and Marsh Creation Vegetative Planting

- *Vegetation installation work in Plaquemines Parish includes planting approximately 5,265 trees and 7,260 smooth cordgrass plugs, with plant material supplied by Nicholl's Farm. The contract duration is 2,750 days from the Notice to Proceed, and the engineer's estimated construction cost is \$107,835.00.*
- *Awarded to Ecological Restoration Services, LLC*

FISCAL YEAR 2027 ANNUAL PLAN



Senate Resolution 7
Sen. Bob Hensgens

House Resolution 1
Rep. Ryan Bourriaque

- ✓ Senate Committee on Natural Resources - Reported favorably by unanimous vote
- ✓ House Transportation, Highways, and Public Works Committee – Reported favorably by unanimous vote
- ✓ House Committee on Natural Resources and Environment – Reported favorably by unanimous vote
- ✓ Senate Committee on Transportation, Highways, and Public Works – Reported favorably by unanimous vote
- ✓ House Floor Debate – Adopted by unanimous vote
- ✓ Senate Floor Debate – Adopted by unanimous vote

INDEFINITE DELIVERY, INDEFINITE QUANTITY CONSTRUCTION PHASE CONTRACTS

House Bill 1193

Rep. Paul Sawyer

- ✓ House Committee on House and Governmental Affairs – Reported favorably
- ✓ House Floor Debate – Passed, ordered to the Senate
- ✓ Senate Committee on Finance – Reported favorably

Currently working its way through the Senate

BRETON SOUND CELEBRATION AND PROJECT UPDATES



PHASE 2 OF THE 40 ARPENT CANAL WETLANDS ENHANCEMENT PROJECT



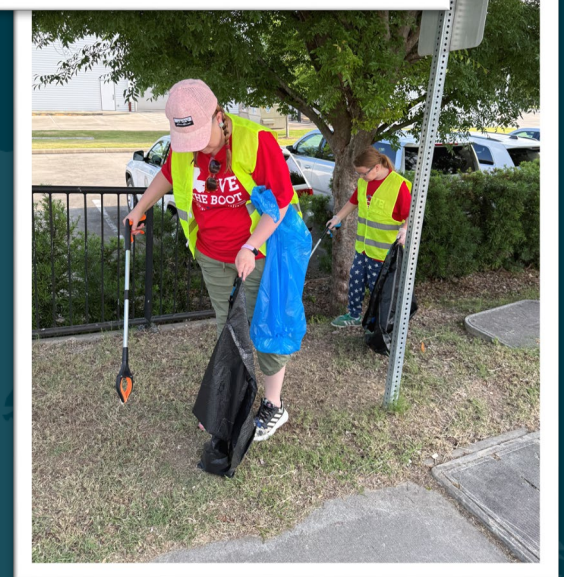
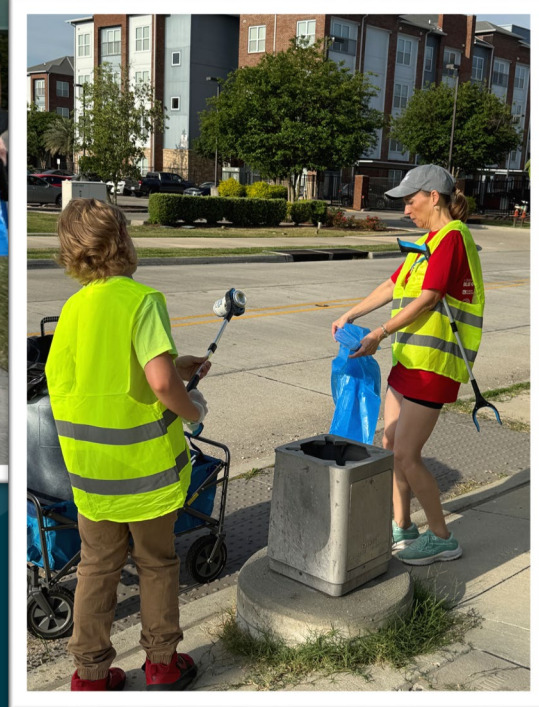


**American Shore and Beach Preservation Association
selects the West Grand Terre Beach Nourishment and
Shoreline Stabilization Project as a recipient of the
2026 Best Restored Beach Award**



LOVE THE BOOT week

KEEP LOUISIANA BEAUTIFUL





LOUISIANA STORM SAFE EVENT



HURRICANE & STORM PREPAREDNESS

SUNDAY, MAY 31 | 1 - 4 P.M.

LSU | Center for River Studies

CPRA

Operations Division

HURRICANE PREPAREDNESS

MAY 20, 2026

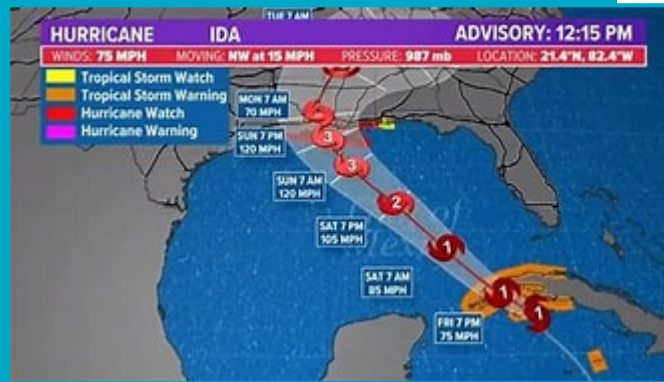


Emergency Management

Responsible for flood protection infrastructure and integrated coastal protection projects across the Louisiana Coastal Area

Hazards that have the potential to affect CPRA operations and infrastructure include:

- Tropical Cyclone Activity
- Flooding and High Water Events
- Large Scale Coastal Oil Spills or HazMat Incidents



Emergency Management –

Pre-Event

- Maintains an Emergency Operations Plan (EOP) which outlines CPRA's pre- and post-storm activities duties
- Coordinates with the United States Army Corps of Engineers (USACE) and the local levee districts within the Coastal Area
- Maintains a list of Levee District items:
 - ✓ Emergency Contacts
 - ✓ EOPs
 - ✓ Flood Fight inventories, supplies, and equipment to support emergency response
- Levee Information Management System (LIMS)
 - ✓ Gate Closure Status
- Hurricane Gage Monitoring System (HGMS)
 - ✓ Consolidation of key gages from multiple sources
- Provides ADCIRC Forecasting to assist Levee Districts with gate closure decisions



Emergency Management –

Preparedness – SLFPA-W



Western Closure Complex (WCC)



Levee Information Management System (LIMS)

- Report feature shows changes in gate status by project, levee district, and period of time
- Report feature shows rollup of gate status by project and/or levee district at a given time.

LIMS Levee Gate Status Change Report

Project: LAKE PONTCHARTRAIN & VICINITY
 Operating Agency: OLD (Orleans Levee District)

From Date: 06/06/2020 09:54 AM
 To Date: 06/08/2020 09:55 AM
Selected criteria applied successfully.

FLOODGATE STATUS CHANGE REPORT			
START DATE & TIME: 06/06/2020 09:54 AM			
END DATE & TIME: 06/08/2020 09:55 AM			
PROJECT	Operating Agency	STATUS CHANGED TO CLOSED	STATUS CHANGED TO OPENED
LAKE PONTCHARTRAIN & VICINITY		19	0
	OLD (Orleans Levee District)	19	0
LAKE PONTCHARTRAIN & VICINITY SEABROOK LPV-IHNC-01		5	0
	OLD (Orleans Levee District)	5	0
LAKE PONTCHARTRAIN & VICINITY, IHNC SURGE BARRIER, LPV-IHNC-02		2	0
	OLD (Orleans Levee District)	2	0
Grand Total		26	0

LIMS Levee Gate Status Report

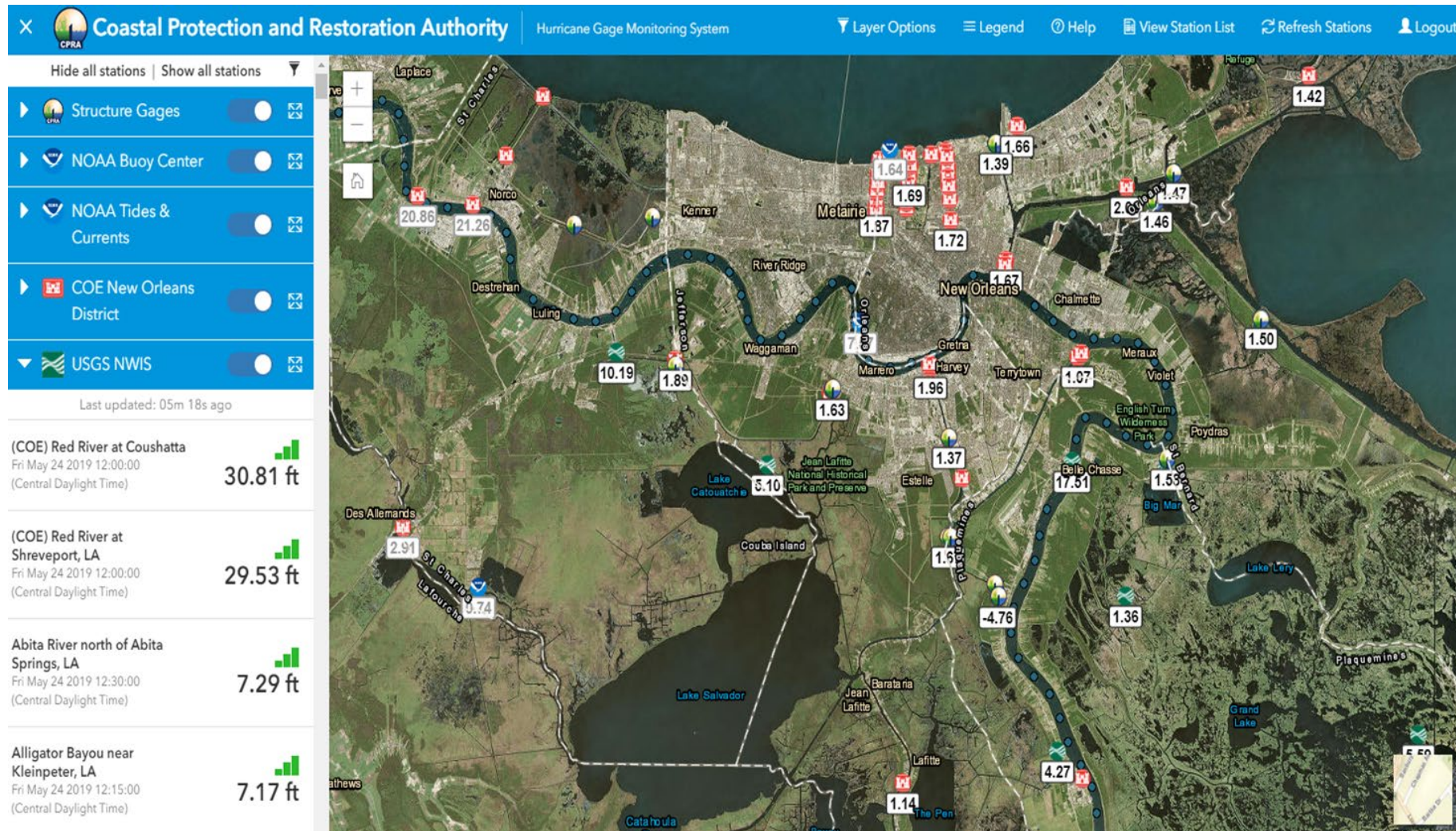
Project:
Operating Agency:

Request Date:

FLOODGATE STATUS REPORT					
5/11/2021 9:53 AM					
PROJECT	Operating Agency	DEFAULT STATUS	STATUS	STATUS	GATES
		CLOSED	CLOSED	OPEN	TOTAL
LAKE PONTCHARTRAIN & VICINITY		75	64	131	195
	EAJ (East Jefferson Levee District)	2	4	6	11
	LBSD (Lake Borgne Basin Levee District)	2	2	4	8
	OLD (Orleans Levee District)	62	58	120	150
	PLD (Pontchartrain Levee District)	1	0	1	1
LAKE PONTCHARTRAIN & VICINITY SEABROOK LPV-IHNC-01		1	0	1	1
	OLD (Orleans Levee District)	1	0	1	1
LAKE PONTCHARTRAIN & VICINITY, IHNC SURGE BARRIER, LPV-IHNC-02		0	1	1	1
	OLD (Orleans Levee District)	0	1	1	1
LAROSE TO GOLDEN MEADOW - FLOOD PROTECTION		0	0	5	5
	SLD (South Lafourche Levee District)	0	0	5	5
MORGANZA TO THE GULF		0	1	10	11
	TLCD (Terminos Levee and Conservation District)	0	1	10	11
MS RIVER & TRIBUTARIES (MRAT)		45	59	237	295
	ABLD (Abbeville Basin Levee District)	0	0	3	3
	ALD (Atchafalaya Levee District)	0	0	2	2
	LBSD (Lake Borgne Basin Levee District)	0	0	0	0
	OLD (Orleans Levee District)	30	39	180	190
	SMPLD (Saint Mary Levee District)	7	7	66	73
	SMP (St. Mary Parish)	0	2	0	2
	TLCD (Terminos Levee and Conservation District)	0	0	0	0
	USACE (United States Army Corps of Engineers)	1	0	0	1
	WALD (West Jefferson Levee District)	1	1	17	19
NEW ORLEANS TO VENICE		0	1	2	3
	PPD (Presqu'Isle Parish Government)	0	1	2	3
NON-FEDERAL LEEVES		6	11	23	34
	LAJL (Lafourche Area Independent Levee District)	2	7	4	11
	LBSD (Lake Borgne Basin Levee District)	0	0	0	0
	OLD (Orleans Levee District)	1	0	4	5
	PPG (Presqu'Isle Parish Government)	0	0	0	0
	SMP (St. Mary Parish)	0	1	0	1
	SMP-002 (St. Mary Parish Gravity Drainage District #2)	0	0	0	0
PERMANENT CANAL CLOSURES AND PUMP STATIONS		0	0	0	0
	OLD (Orleans Levee District)	0	0	0	0
WEST BANK & VICINITY		24	23	112	135
	PPD (Presqu'Isle Parish Government)	0	0	0	0
	SCP (St. Charles Parish)	0	0	0	0
	WALD (West Jefferson Levee District)	12	12	12	12
Grand Total		151	159	532	691

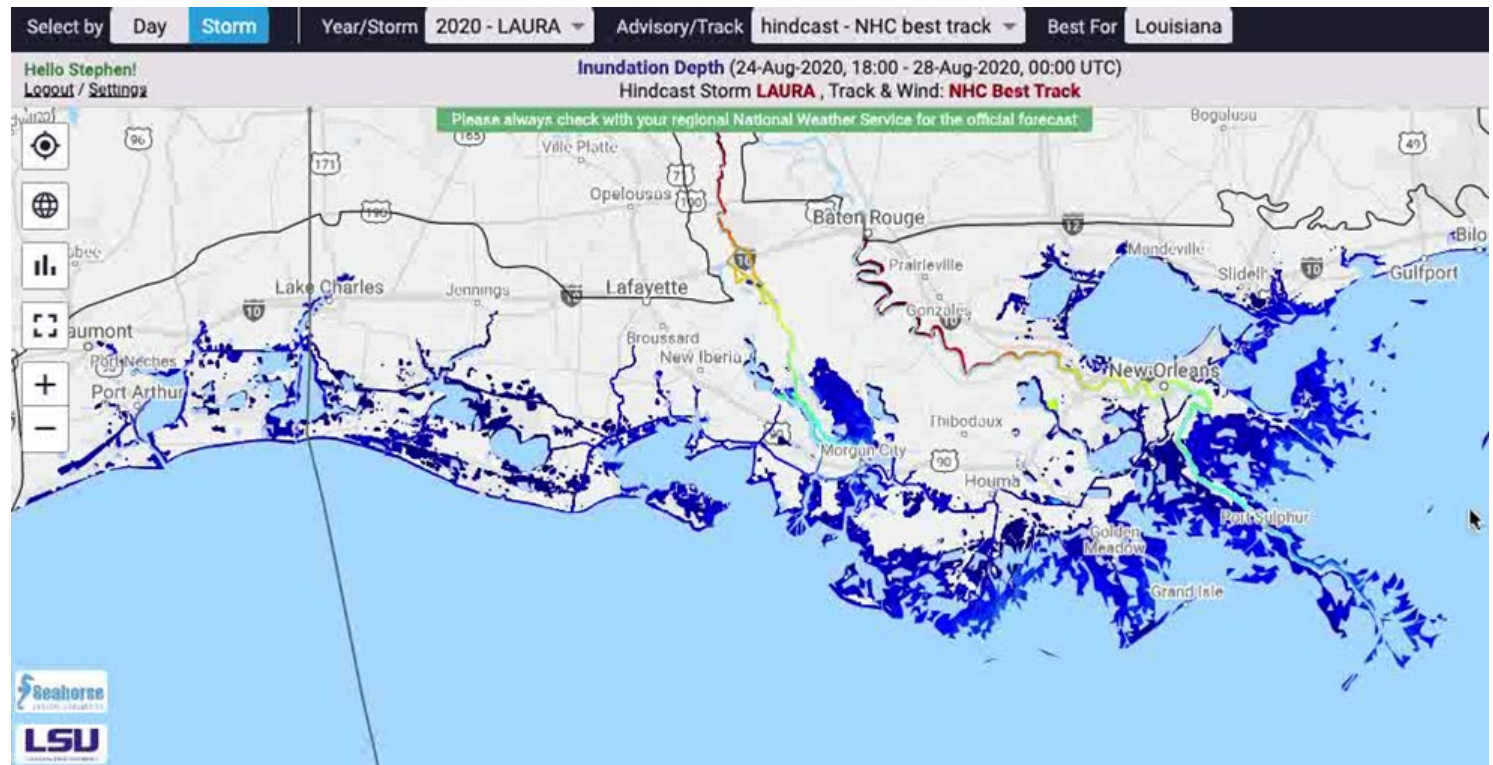
Hurricane Gage Monitoring System (HGMS)

- Water-level gage data from USACE, USGS, NOAA and Structure Gages shown spatially



ADCIRC Surge Guidance System (ASGS)

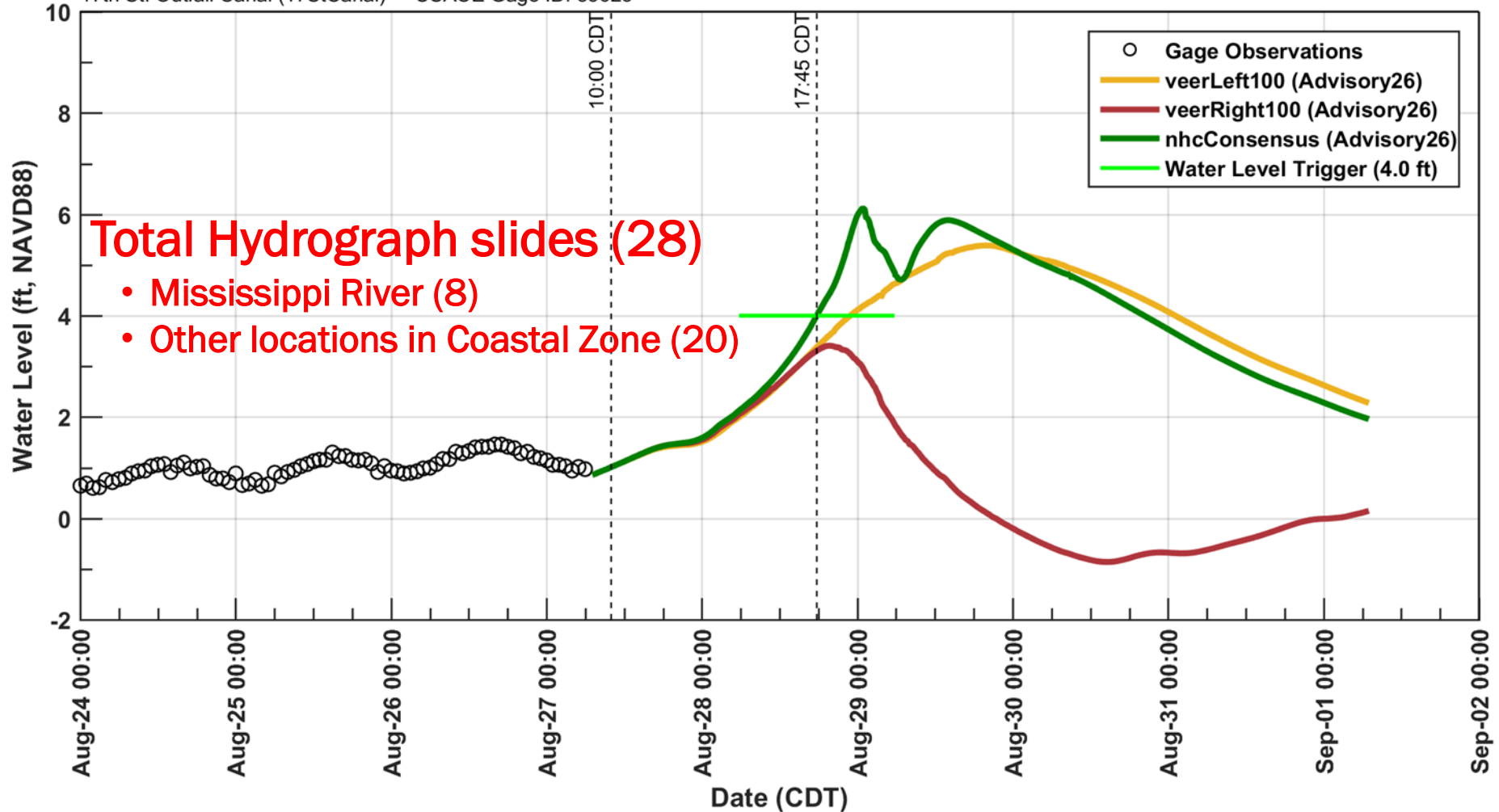
- CPRA works with LSU's Center for Coastal Resiliency (CCR) team which includes Dr. Jason Fleming to implement and maintain the ADCIRC Surge Guidance System (ASGS) for the modeling of storm surge for hurricanes and tropical events.
- ASGS model output provides CPRA and the levee districts with water elevation forecasts to assist with operational decisions on coastal floodgate closures as a tropical storm approaches
- ADCIRC grid is updated each year with the latest bathymetric and topographic data
- ASGS is tested and validated using historical storm data.
- Automated forecast system is maintained in ready-mode during hurricane season



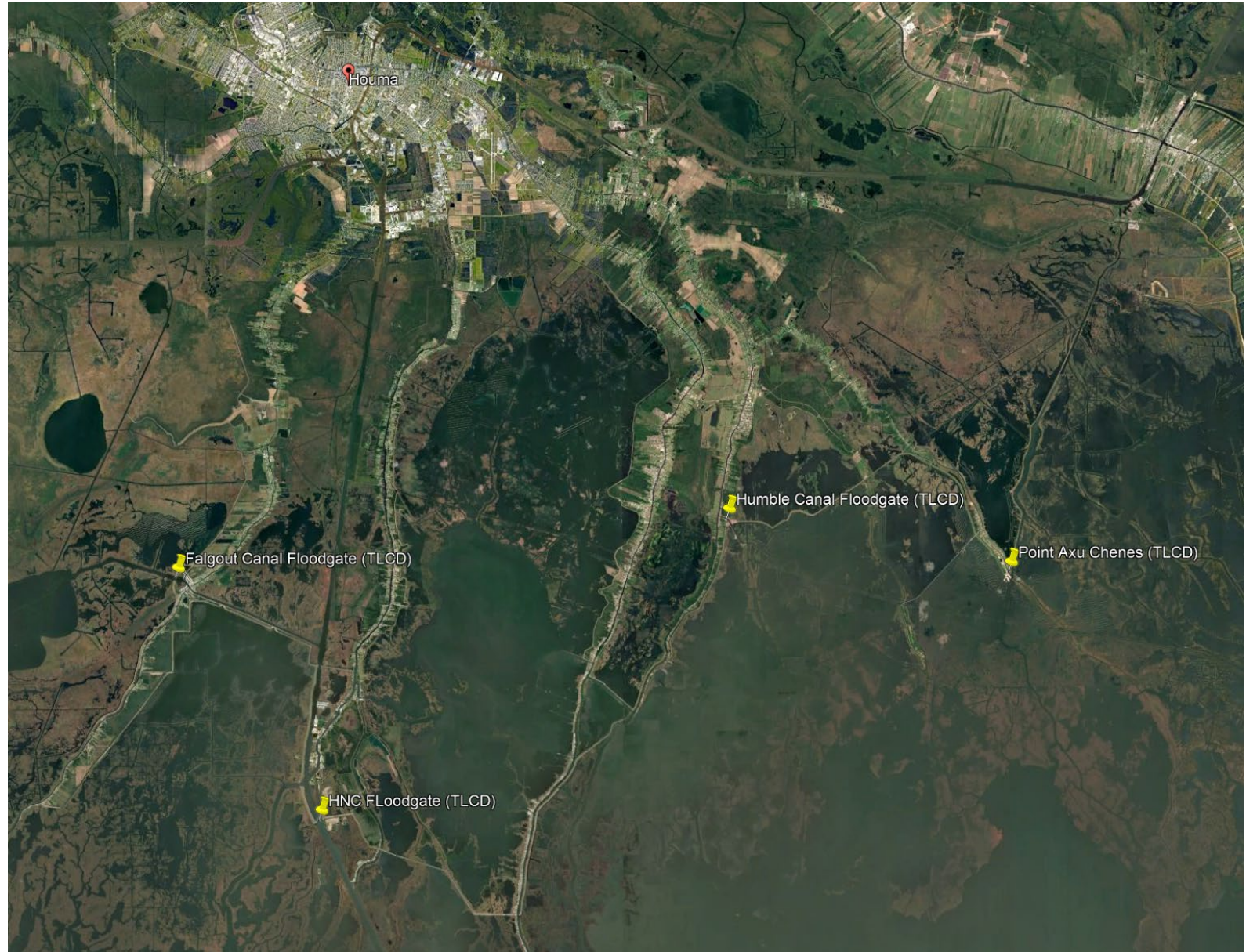
Example Hydrograph:

Permanent Canal Closure and Pumps (PCCP-01)

Storm: ISAAC - Advisory: 26 Issued on 08-27 10:00 CDT - grid: LA_v19j-WithUpperAtch_chk
17th St. Outfall Canal (17StCanal) - USACE Gage ID: 85625



ASGS – New Station Locations



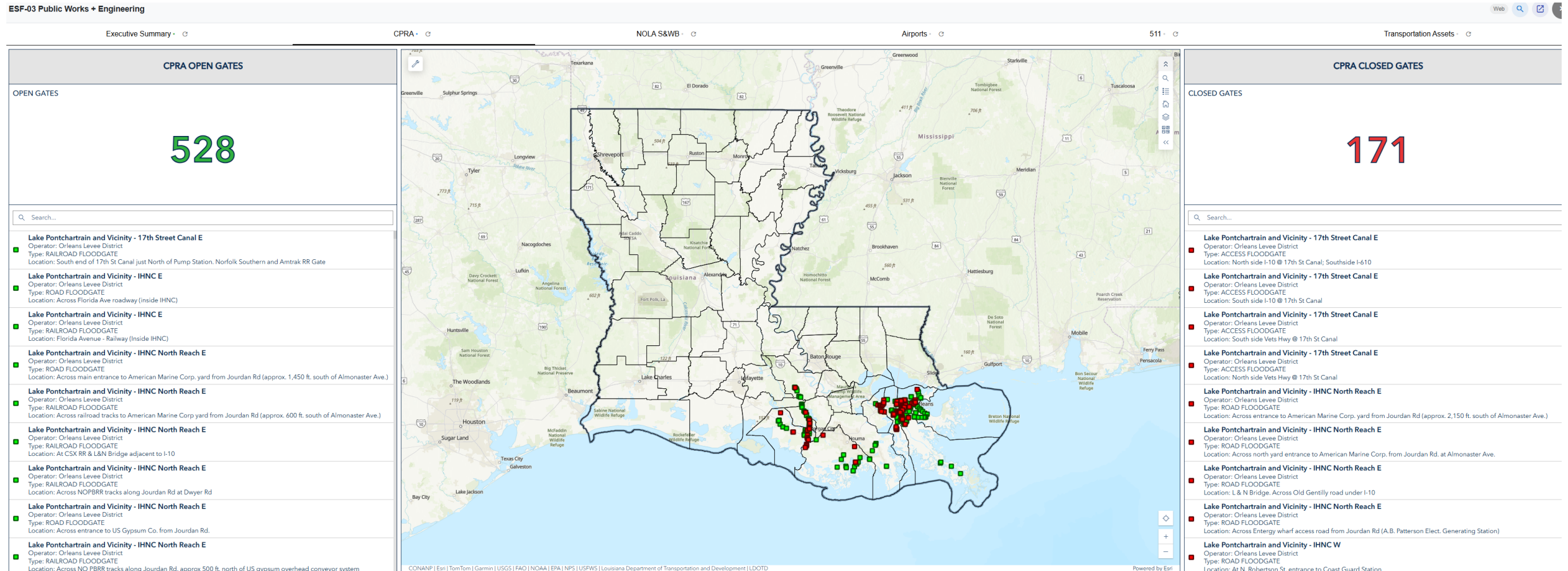
Emergency Management

CPRA – During an Event

- Provides staff and capability to support the State’s Emergency Operations Center (EOC). CPRA staffs the EOC’s Emergency Support Function (ESF-3) infrastructure desk.
- Coordinates with local, State, and Federal entities including Parish Governments, Levee Boards, and other jurisdictions in Louisiana’s Coastal Zone.
 - Local requests are made when the requesting jurisdiction has exhausted all resources and no longer has the capability to support themselves.
 - ALL REQUESTS MUST GO THROUGH WEB EOC.
 - Requests generally involve maintaining the integrity of levee and flood control infrastructure in order to save lives and protect property.
 - CPRA relies on emergency contracts to procure temporary flood protection measures, de-watering support, etc.

Emergency Management

CPRA – During an Event – GOHSEP Common Operating Picture (COP) Dashboard



Emergency Management

CPRA – Post-Event

- Performs Damage Assessments:
 - Inspects levee, flood protection, and integrated coastal protection projects throughout coastal Louisiana to protect lives and property as well as to ensure continued suitability of service.
- Coordinates inspections with the appropriate local and Federal authorities
- Where issues are found, makes requests to the USACE for Federal assistance



Keys to Tropical Cyclone Operations

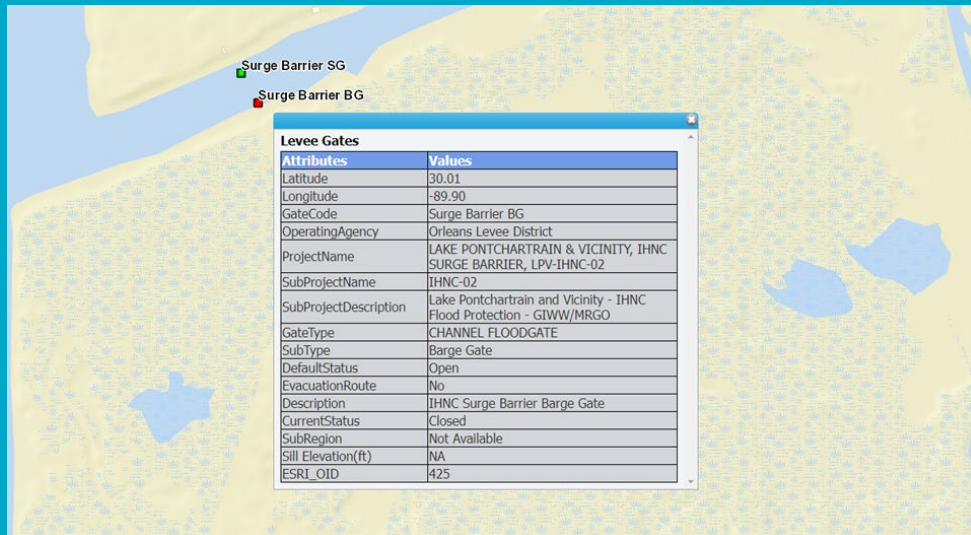
- Flood Risk Reduction Systems (levee, walls, gates, Pump Stations, and Drainage Structures)
- Levee Information Management System (LIMS)
- Hurricane Gage Monitoring System (HGMS)
- ADCIRC Surge Guidance System (ASGS)

These tools are intended to help guide CPRA and the levee districts with the necessary information to make operational decisions on coastal floodgate closures as a tropical system approaches landfall. These operational tools are not intended for evacuation purposes – for this we use the National Weather Service (NWS) and Local Authorities.



Levee Information Management System (LIMS)

- Log closure structure operations
- Store closure structure info/attributes
- Create closure structure status reports
- Display closure structure status graphically
- Link to document library
 - ✓ Contact Directory
 - ✓ EOP Manuals
 - ✓ Statewide Emergency Contracts
 - ✓ Local Flood Fight Asset Inventory
- Public access – separate portal shows map / gate list with status



The screenshot shows the LIMS web application interface. At the top, there is a navigation bar with the CPRA logo and the text "Coastal Protection and Restoration Authority". Below the navigation bar, there are links for "Home", "Events", "Levee Gates", "Reports", and "DBA". The main content area features a "Welcome to LIMS - Levee Information Management System" message, a map of the Lake Pontchartrain area with various gate locations marked, and a "Document Links" section with links to "Flood Protection Contact Directory", "Emergency Operating Procedures Manuals", "Statewide Emergency Contracts", and "Local Flood Fight Asset Inventory".



Frequently Used Sites

- **CPRA CIMS** <https://cims.coastal.louisiana.gov>,
 - **HGMS:** Navigate to Protection > HGMS Private > Map Viewer. Displays water level and meteorological data for CPRA, USACE, USGS, and NOAA gages.
 - **LIMS:** Navigate to Protection >
 - Select “LIMS Gate Status”, which is the publicly-accessible open/closed status of gates/closures.
 - Select “LIMS Private”, allows levee districts/authorities to change gate/closure status to open/closed.
- **CERA** <https://cera.coastalrisk.live/>
 - ADCIRC visualization
- **Rivergages website:** www.rivergages.com; backup resource for checking water levels on GOES network; source for pulling data to other sites e.g. CIMS HGMS.

- CIMS – Coastal Information Management System
- HGMS – Hurricane Gage Monitoring System
- LIMS – Levee Information Management System
- CERA – Coastal Emergency Risks Assessment
- CFIGS – Compound Flood Inundation Guidance System
- GOES – Geostationary Operational Environmental Satellite
(login required for HGMS and LIMS Private)

CONNECT WITH US!



@LOUISIANACPRA

