



Pre-Hurricane Season Overview of New Orleans District

CPRA Board Meeting
May 20, 2026

COL Scotty Autin
Commander
US Army Corps of Engineers
New Orleans District



U.S. ARMY

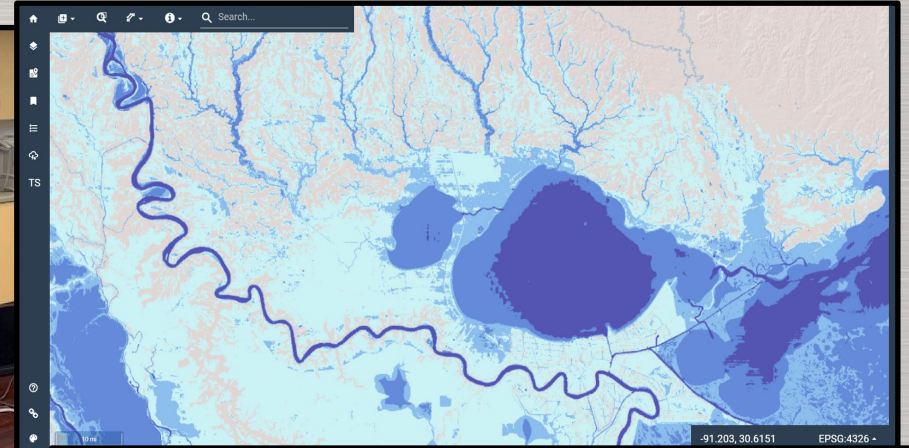
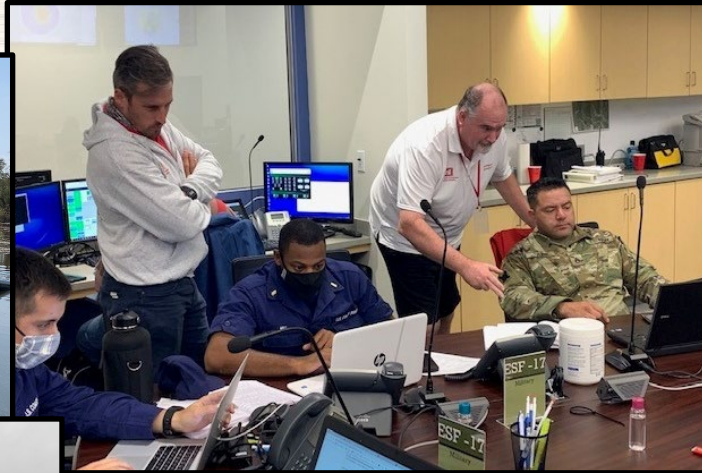


US Army Corps
of Engineers



ALIGNMENT, PREPAREDNESS, READINESS

Emergency Management & Structures Working Together



US Army Corps of Engineers®



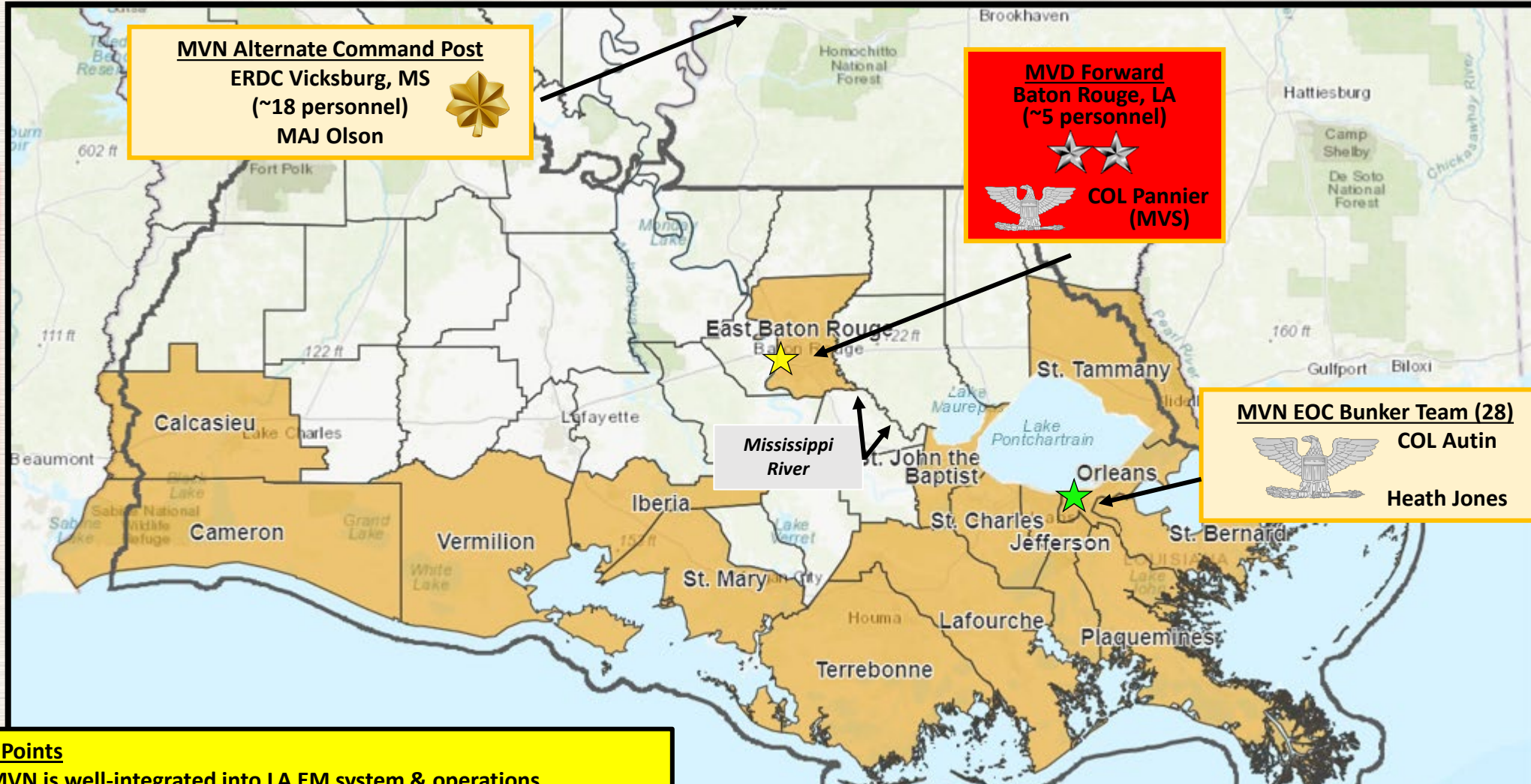
LOE 1: INTERNAL OPERATIONS

Pre Storm

- Decision on building status and deployment of personnel
- Decision on Safe Haven benefits

Post Storm

- Accountability and welfare of MVN personnel
- Decision on when to reopen building and recall employees
- Determination of "mission critical" activities which tie to Safe Haven



MVN Alternate Command Post
 ERDC Vicksburg, MS
 (~18 personnel)
 MAJ Olson

MVD Forward
 Baton Rouge, LA
 (~5 personnel)
 COL Pannier (MVS)

MVN EOC Bunker Team (28)
 COL Autin
 Heath Jones

Key Points

- MVN is well-integrated into LA EM system & operations.
- Key for MVD: movement into LA by ground will be extremely difficult once Contra-Flow enacted (H -30 to H -6).

MVN LGLs deploy to Coastal Parishes & key state agencies
 (~30 personnel, 2-person teams)

Dark Grey Line = MVN Boundary
 Orange = Supported LA Parishes
 ★ MVN District HQ
 ★ REOC and MVN Forward



U.S. ARMY

US Army Corps of Engineers®



LOE 2: COMMUNICATIONS

Pre Storm & Post Storm

- Unified Command Group at GOHSEP with Governor
- City of NOLA Mayor's brief
- Upward reporting to MVD and HQUSACE
- Daily MVD Commander's update and CMT
- Integrated into ESF Dashboard



NEW ORLEANS DISTRICT STATUS UPDATE

TROPICAL STORM FRANCINE

EMPLOYEE INFORMATION

- The MVN HQ campus is closed Thursday September 12. Reopening of the campus is anticipated to occur Friday, September 13.
- Post-landfall accountability will begin at 0800. Please include current status, including if your home/property has incurred damages during the storm.
- Local TDY and traditional TDY has been authorized for team members who are responding to TS Francine. Please check with your supervisor for more information.
- Safe Haven allowances are being authorized for teammates in the central and western part of our area of responsibility since they were in direct path.

ONGOING STORM RESPONSE

1. A total of 8 MVN LGL cadre deployed on September 10. Two LGLs are in Jefferson Parish, two at GOHSEP, two at Orleans Parish, one at Terrebonne Parish, and one at SLFPA West.
- Closed Structures (11 total):
 - **GIWW:** Leland Bowman, Harvey, IHNC
 - **Calcasieu:** Catfish Point, Freshwater Bayou (Gates left in OPEN position to allow for drainage), Schooner Bayou
 - **Old River, Morganza, and North Atchafalaya Basin:** Low Sill, Overbank
 - **Atchafalaya Basin:** Bayou Boeuf, Berwick, East and West Calumet
 - Channel Closures: Most federal waterways across Southeast LA have been closed by USCG. The Mississippi River is closed to navigation from Hwy 190 to the mouth. All vessels and floating plants have been secured and brought into safe harbor.
 - District will begin damage assessments of levee systems, as well as navigation structures and channels, as soon as safe to do so.



As of 20240912

DISTRICT HQ



CLOSED

MAX TELEWORK



INITIATED

ACCOUNTABILITY



INITIATED



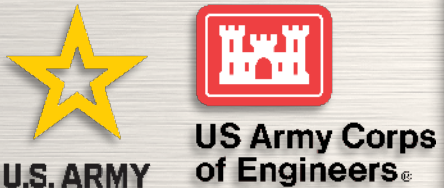
MVN/MVD EOC Team - Hurricane Francine



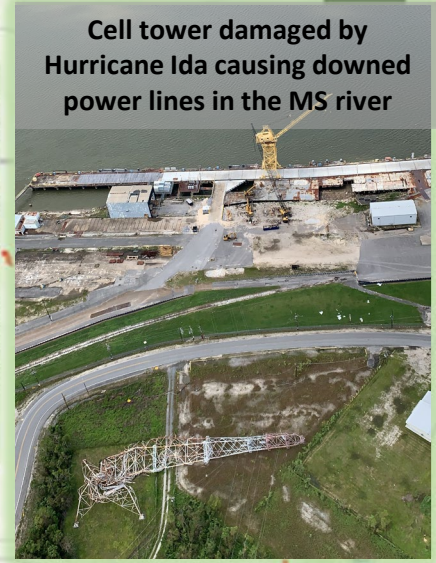
MG Peeples at GOHSEP (MVN Forward)



MVN EOC Bunker Team Call with Gov Landry



LOE 3: NAVIGATION & INFRASTRUCTURE



LEGEND

Lock Status

- Open
- Closed
- Restricted
- Intermittent Closure

MVN River Mile Status

- Open - Fully
- Open - Area of Concern
- Restricted - One-Way Traffic
- Restricted - Reduced Draft
- Restricted - Reduced Draft and One-Way Traffic
- Closed

MVN District

Operational C² of GIWW

- Lock Readiness
- Navigation Assessment
- Traffic Management/Integration



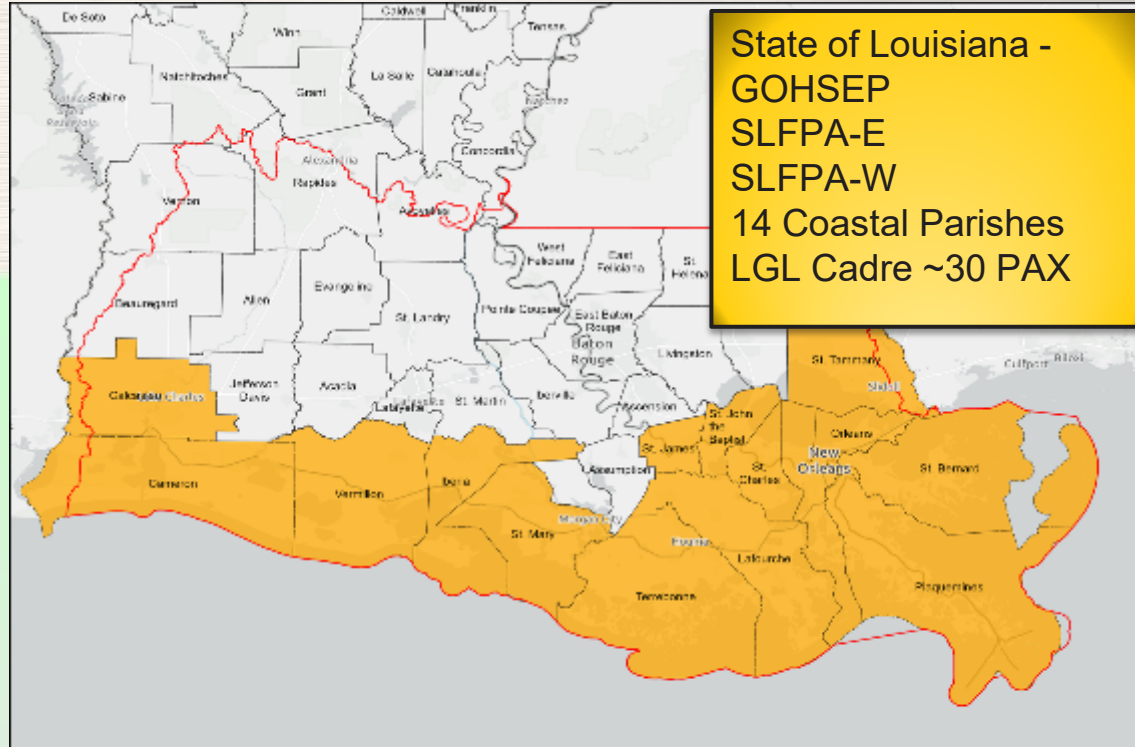
LOE 4: SUPPORT TO STATE

Pre-Storm

- Technical assistance to state and locals
- Flood fighting of any areas of concern
- Tracking of gate closures for NCCed projects
- Emergency permitting for non-federal actions

Post-Storm

- Flood Response
- Assisting state and locals with Damage assessments
- Assistance with any immediate repair needs
- Transition into the PIR process



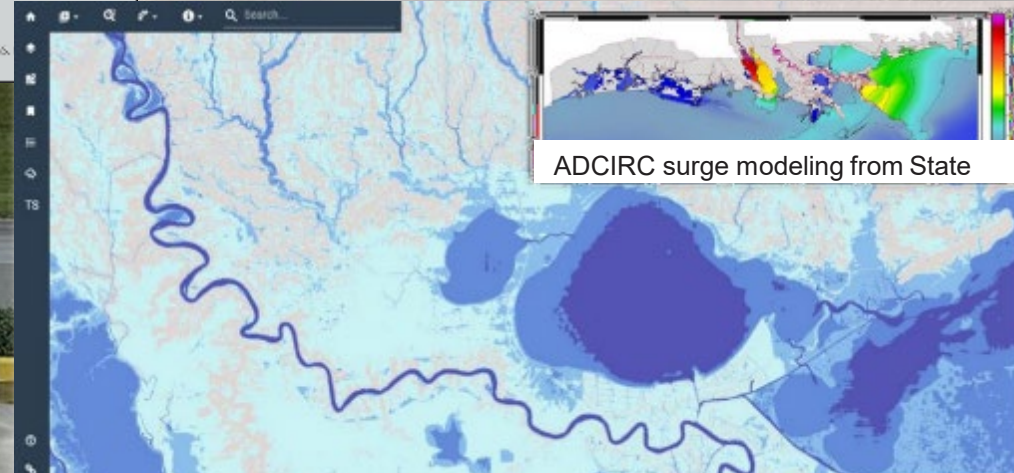
MVN Local Government Liaison program



LGL Cadre



Hurricane Ida Unwatering Mission -
Temporary pumps at Goose Bayou in
Lafitte, LA



U.S. ARMY



US Army Corps
of Engineers®



LOE 5: EMERGENCY PERMITTING

Pre Storm & Post Storm

- RG division issues emergency permits under Section 404 of the Clean Water Act & Section 10 of the Rivers and Harbors Act
- The MVD Division Engineer approves emergency procedures to be utilized by the district in accordance with 33 CFR 325.2(e)(4).
- Emergency permitting for non-federal actions
 - Debris removal from waterways
 - Temporary housing
 - Temporary levees/berms/roads
 - Dredging operations
 - Power grid restorations
- Emergency permitting procedures are evaluated & decided upon typically in 24-28 hours or less



DEPARTMENT OF THE ARMY
CORPS OF ENGINEERS
MISSISSIPPI VALLEY DIVISION
1400 WALNUT STREET
VICKSBURG MS 39180-3262

CEMVD-PDO

11 SEP 2024

MEMORANDUM FOR Commander, New Orleans District, (CEMVN-RG/Mr. Mayer),
7400 Leake Ave., New Orleans, LA 70118-3651

SUBJECT: Requesting Approval to Authorize Emergency Permit Procedures for
Hurricane Francine Recovery Operations

1. Reference memorandum, CEMVN-RG, 9 September 2024, subject as above (Encl).
2. Pursuant to 33 CFR 325.2(e)(4), you are authorized to implement emergency permit processing procedures, as specifically outlined in the above referenced memorandum, for any work requiring emergency action as a result of Hurricane Francine. I expect that any work being evaluated under these procedures will be closely coordinated with the appropriate state and federal resource agencies.
3. My point of contact for this action is Mr. Robert Gramke at (314) 435-7966 or email robert.gramke@usace.army.mil.

Building Strong-Together!

KIMBERLY A. PEEPLES
Major General, USA
Commanding

Encl



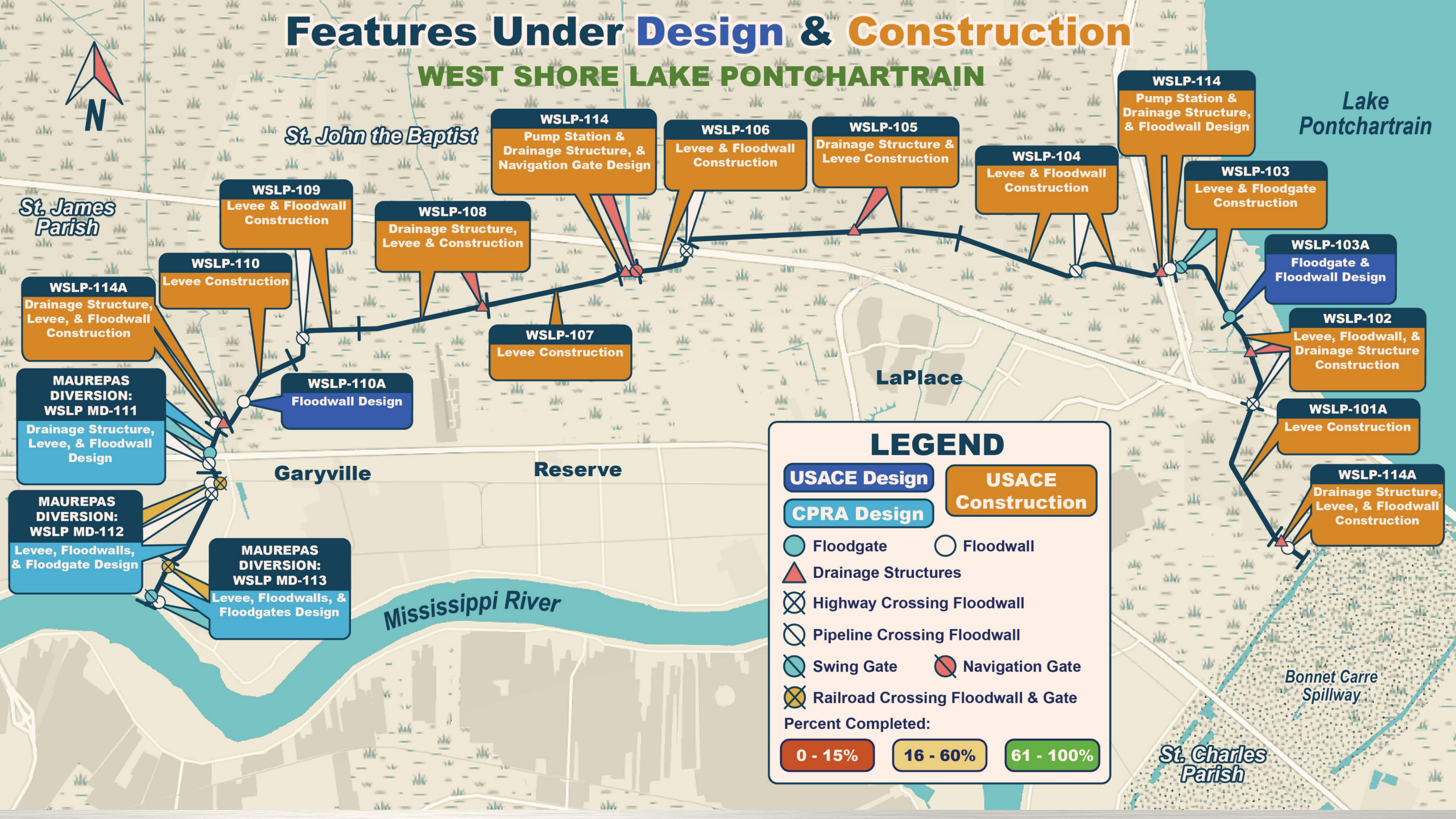
U.S. ARMY



US Army Corps
of Engineers®

Features Under Design & Construction

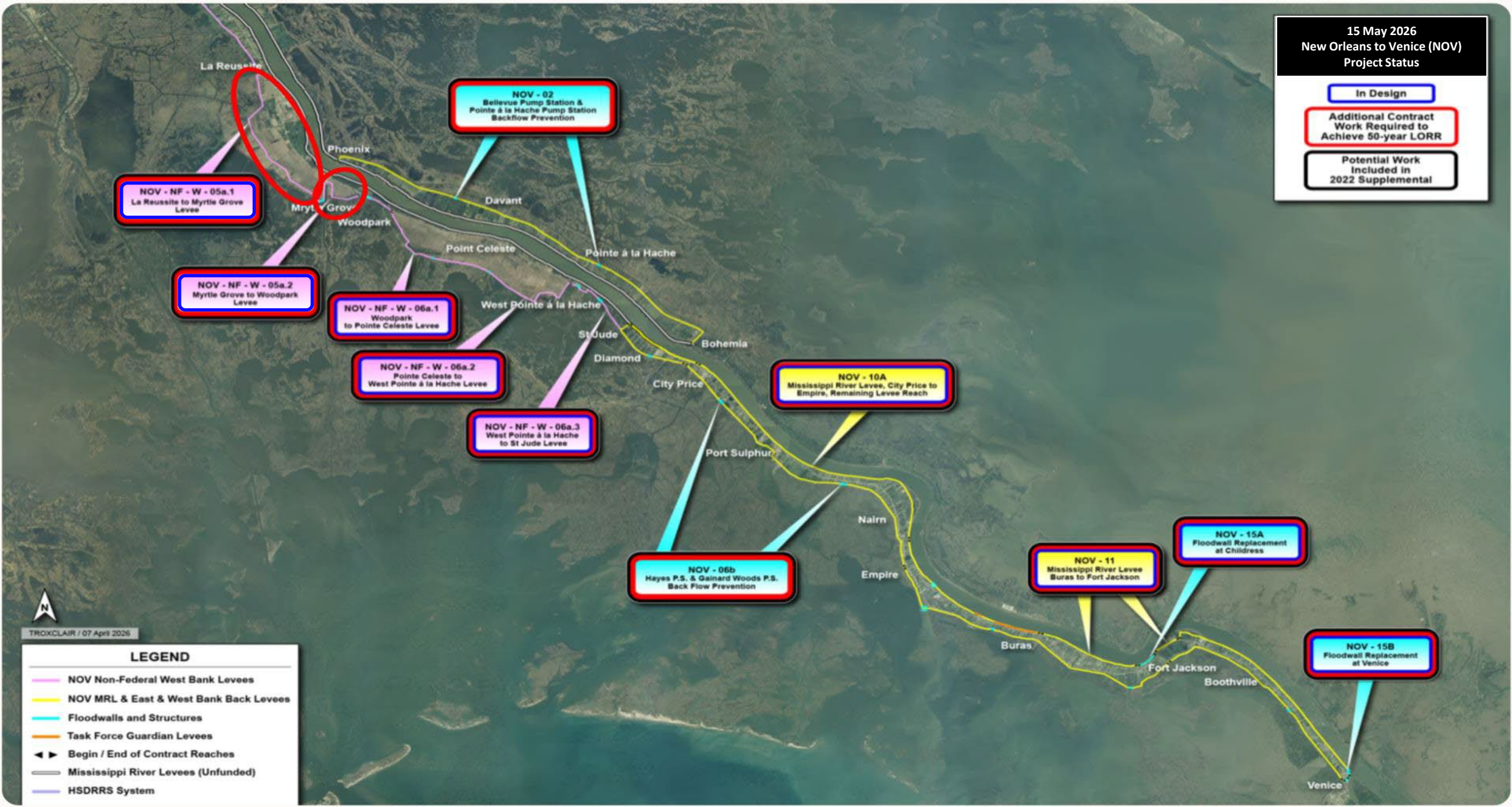
WEST SHORE LAKE PONTCHARTRAIN



NEW ORLEANS TO VENICE, LOUISIANA PROJECT

15 May 2026
New Orleans to Venice (NOV)
Project Status

- In Design
- Additional Contract Work Required to Achieve 50-year LORR
- Potential Work Included in 2022 Supplemental



NOV - NF - W - 05a.1
La Reussite to Myrtle Grove Levee

NOV - NF - W - 05a.2
Myrtle Grove to Woodpark Levee

NOV - NF - W - 06a.1
Woodpark to Pointe Celeste Levee

NOV - NF - W - 06a.2
Pointe Celeste to West Pointe à la Hache Levee

NOV - NF - W - 06a.3
West Pointe à la Hache to St. Jude Levee

NOV - 02
Bellevue Pump Station & Pointe à la Hache Pump Station Backflow Prevention

NOV - 06b
Hayes P.S. & Gainard Woods P.S. Back Flow Prevention

NOV - 10A
Mississippi River Levee, City Price to Empire, Remaining Levee Reach

NOV - 11
Mississippi River Levee Buras to Fort Jackson

NOV - 15A
Floodwall Replacement at Childress

NOV - 15B
Floodwall Replacement at Venice

TROXCLAIR / 07 April 2026

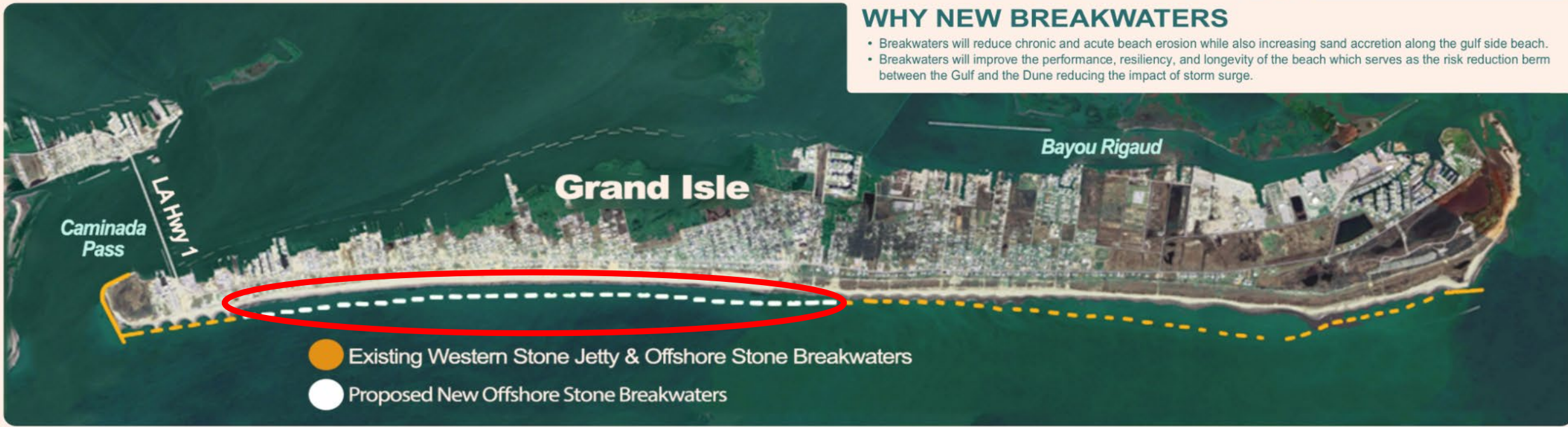
LEGEND

- NOV Non-Federal West Bank Levees
- NOV MRL & East & West Bank Back Levees
- Floodwalls and Structures
- Task Force Guardian Levees
- Begin / End of Contract Reaches
- Mississippi River Levees (Unfunded)
- HSDRRS System

GRAND ISLE & VICINITY - BREAKWATERS

WHY NEW BREAKWATERS

- Breakwaters will reduce chronic and acute beach erosion while also increasing sand accretion along the gulf side beach.
- Breakwaters will improve the performance, resiliency, and longevity of the beach which serves as the risk reduction berm between the Gulf and the Dune reducing the impact of storm surge.



2024

USACE develops PIR supplement for additional breakwaters leveraging WRDA22 Section 8102. USACE and CPRAB perform analysis to show benefits of breakwaters.

2025

March: USACE previously approved Post-Ida repairs complete (\$81M).

September: Exception to Policy Approved by ASA(CW); PIR Supplement for breakwaters Approved by HQUSACE (\$62M)

2026

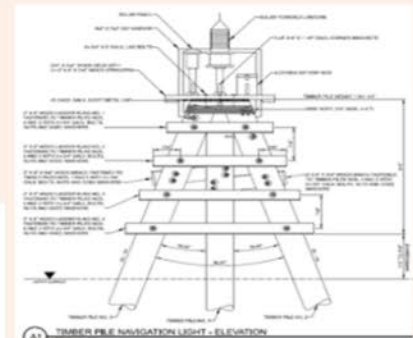
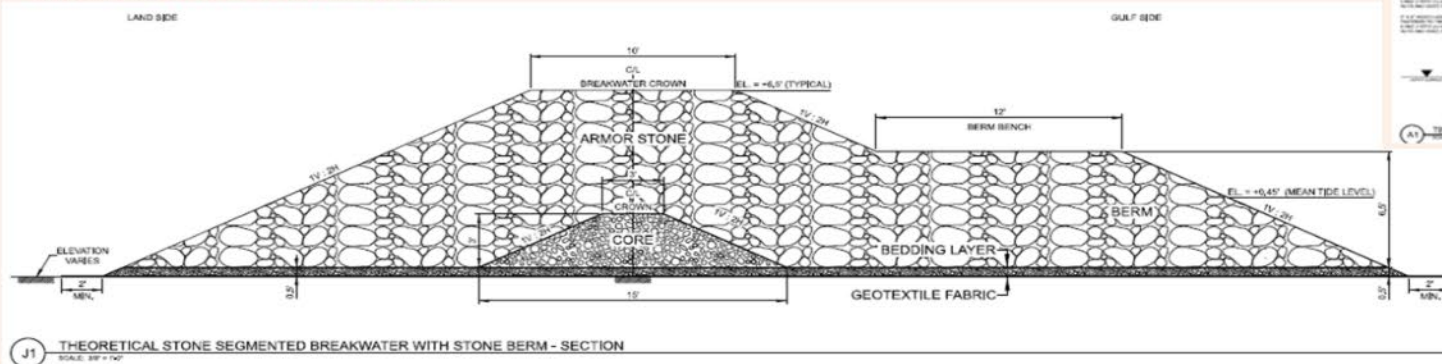
22 JAN: P&S Approval
13 FEB: Advertise Contract
21 APR: FONSI Signed
27 APR: Bid Opening
27 MAY: Anticipated Contract Award

2027

JUN: Construction Complete

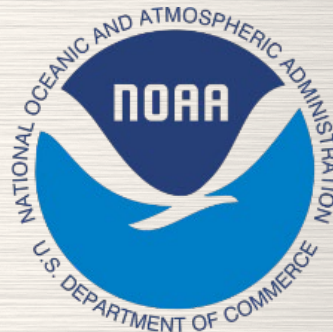
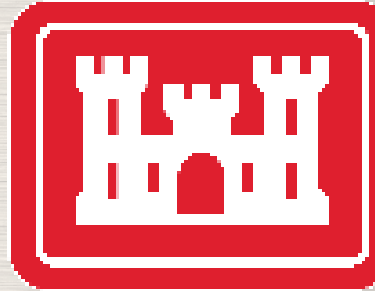
PROJECT FEATURES

- Approx. **272,000 tons of stone** will be used to construct 31 offshore stone segmented breakwaters. **20 navigation lights** will also be installed along the length of the newly installed breakwaters.
- The breakwaters will have the same design section and stone gradation (2–4-ton armor stone) as the western breakwaters recently constructed by USACE under BBA-18.
- Each segment will be approximately **250 feet long** and have **250-foot gaps between them**. The breakwater top will be approximately **6 feet above the water surface**.



ALIGNMENT, PREPAREDNESS, READINESS

TEAMWORK - THE POWER OF PARTNERING



US Army Corps of Engineers®

U.S. ARMY



ALIGNMENT, PREPAREDNESS, READINESS

EVERYONE HAS A ROLE



US Army Corps
of Engineers®



KEEP IN TOUCH WITH THE NEW ORLEANS DISTRICT

Latest News, Announcements, Events & Connections



District website

www.mvn.usace.army.mil



Facebook

www.facebook.com/usacenola



Instagram

www.instagram.com/usace_nola



X (Twitter)

twitter.com/usacenola



LinkedIn

Search - US Army Corps of Engineers New Orleans District



U.S. ARMY



US Army Corps
of Engineers®