

Coastwide Nutria Control Program

CWPPRA Project LA-03B



Jennifer Manuel | Furbearer Biologist |



Invasive Nutria

- Introduced in the 1940's
- Eat roots and rhizomes, destroys 10x what they consume
- No natural control measures in coastal marsh
- Damages crops
- Burrows under structures
- Can carry parasites and diseases transmittable to humans



Invasive Nutria

Normal Marsh

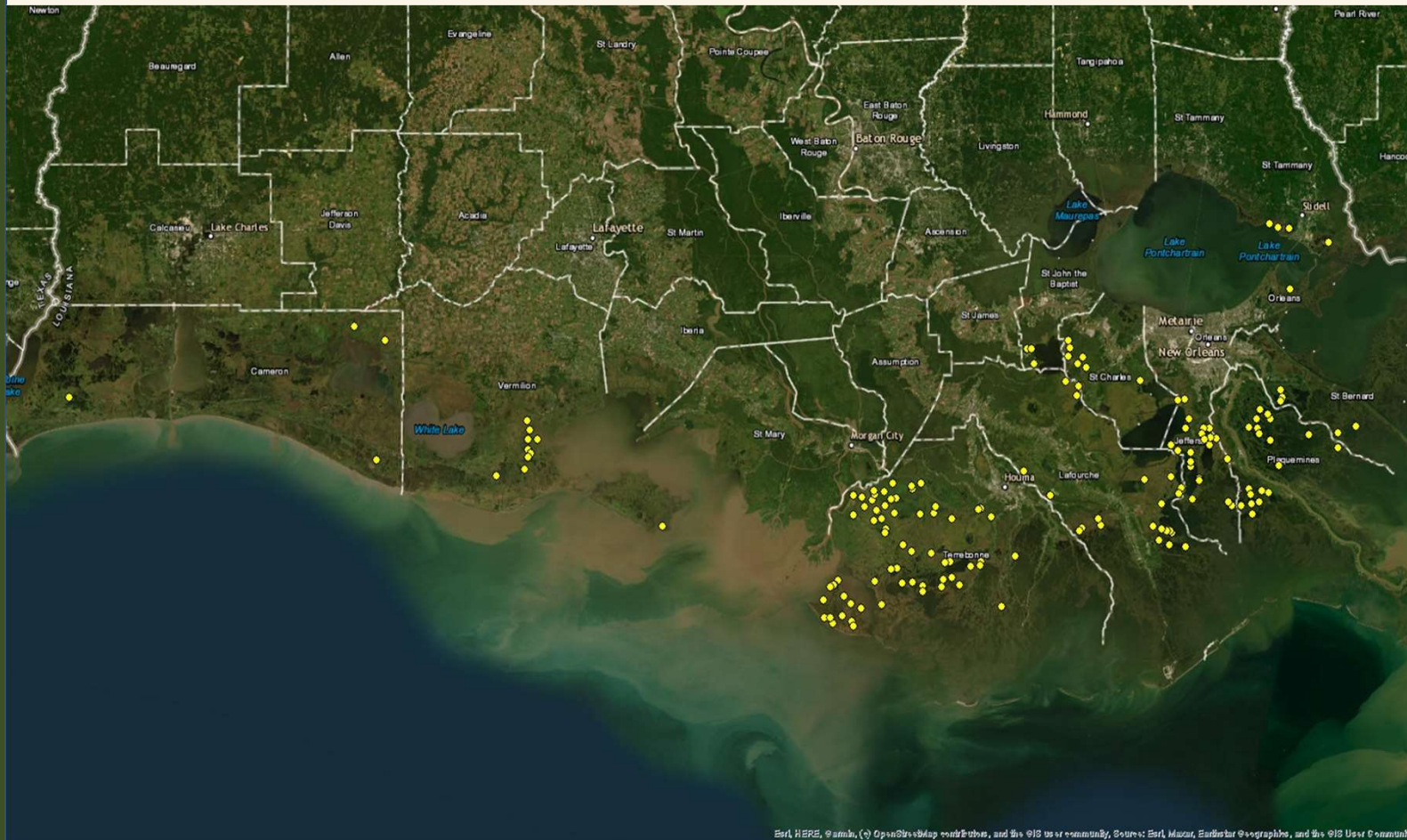
Denuded Marsh

Exclosure —————



Invasive Nutria

- 1999 aerial survey indicated 164 damage sites



Controlling the problem

Cost-Benefit Analysis performed by independent lab in 2000

- **determined a bounty program would be most efficient**

Pros

- **Cost effective**
- **Utilizes hunter/trapper base**
- **Boosts rural economy**

Cons

- **Requires intense oversight**
- **Difficult to manage fraud**
- **Difficult to target problem locations**
- **Long-term goals**



Program Logistics

- **Goal: Reduce marsh damage from nutria herbivory by removing 400,000 nutria/ season**
- **Method: Incentive payments to registered hunters/trappers**
 - **\$4/tail 2002 – 2005**
 - **\$5/tail 2006 – 2019**
 - **\$6/tail beginning fall 2019**
- **Season Nov 20 – Mar 31**



CNCP Program Funding

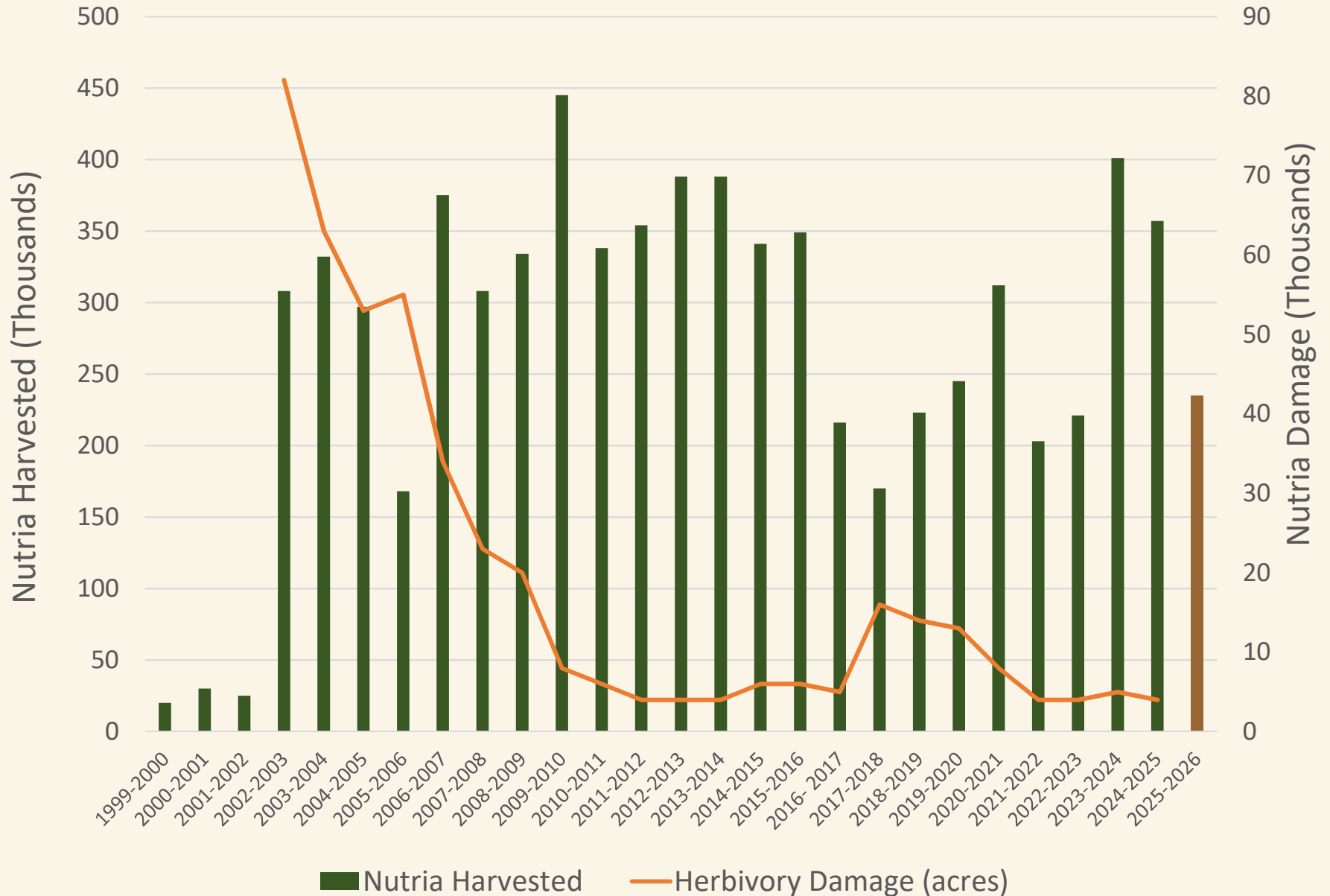
- **Coastal Wetlands, Planning, Protection, & Restoration Act (CWPPRA)**
 - **USDA-Natural Resources Conservation Service (NRCS)**
 - **Louisiana Coastal Protection and Restoration Authority (CPRA)**
- **Implemented by Louisiana Department of Wildlife and Fisheries (LDWF) and Coastal Environments, Inc (CEI)**



Program Boundary



CNCP Harvest & Damage



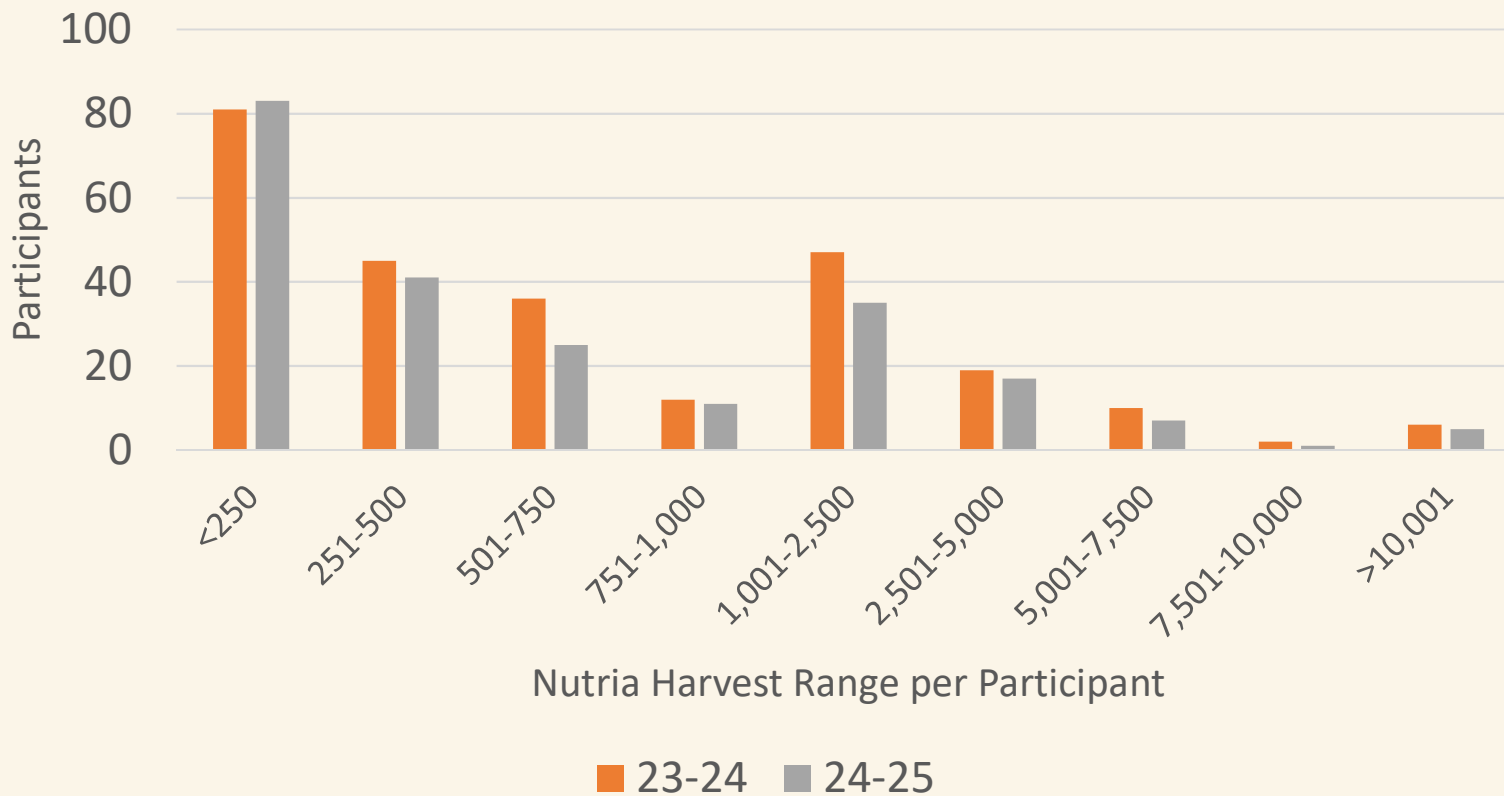
CNCP Season Comparison

	2023-2024	2024-2025	2025-2026 (so far)
Harvest	401,312	357,015	<u>235,220</u>
Incentive Payment	\$2,407,872	\$2,142,090	<u>\$1,411,320</u>
Active Participants	258 (58%)	225 (55%)	170 (42%)

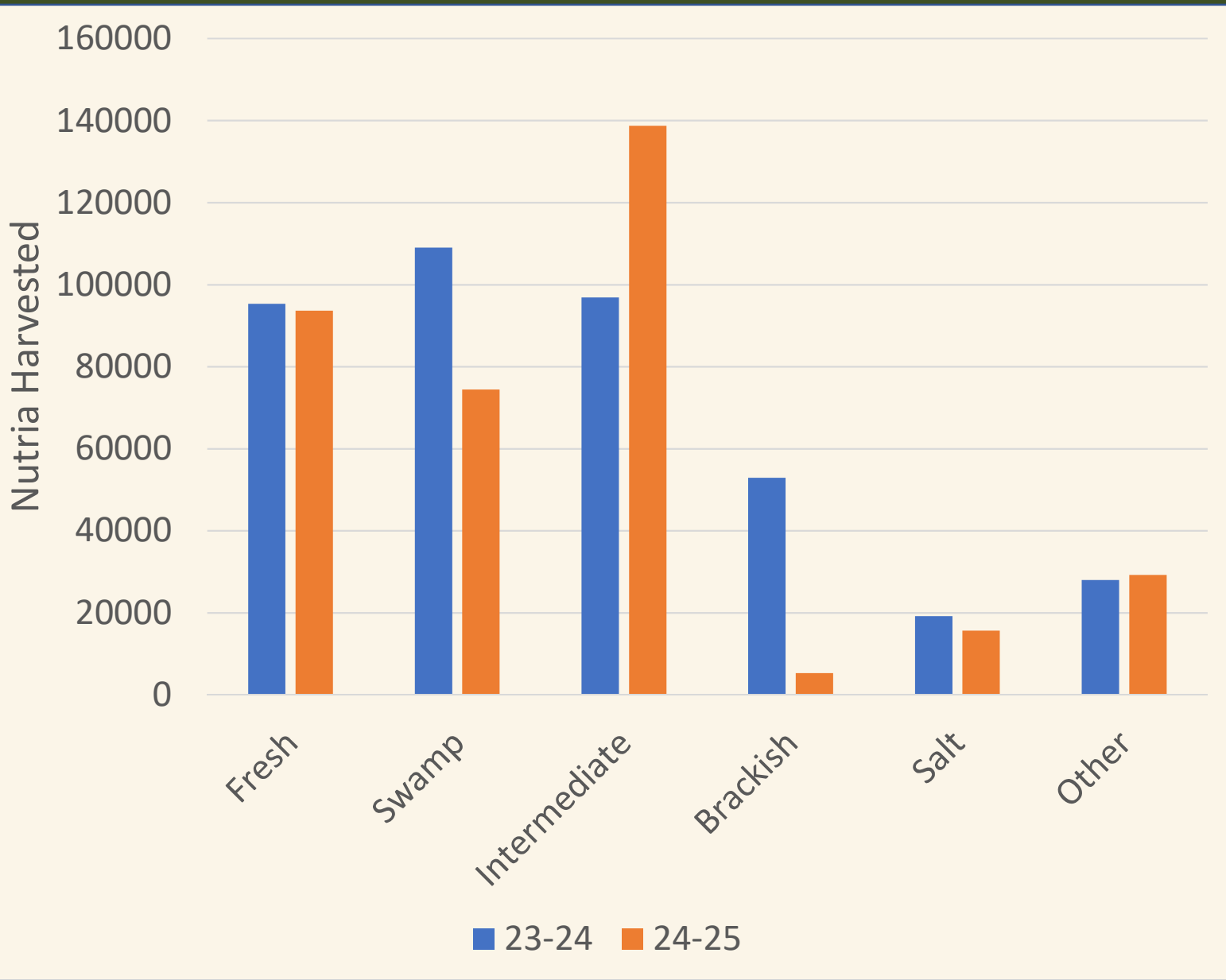


Harvest by Participants

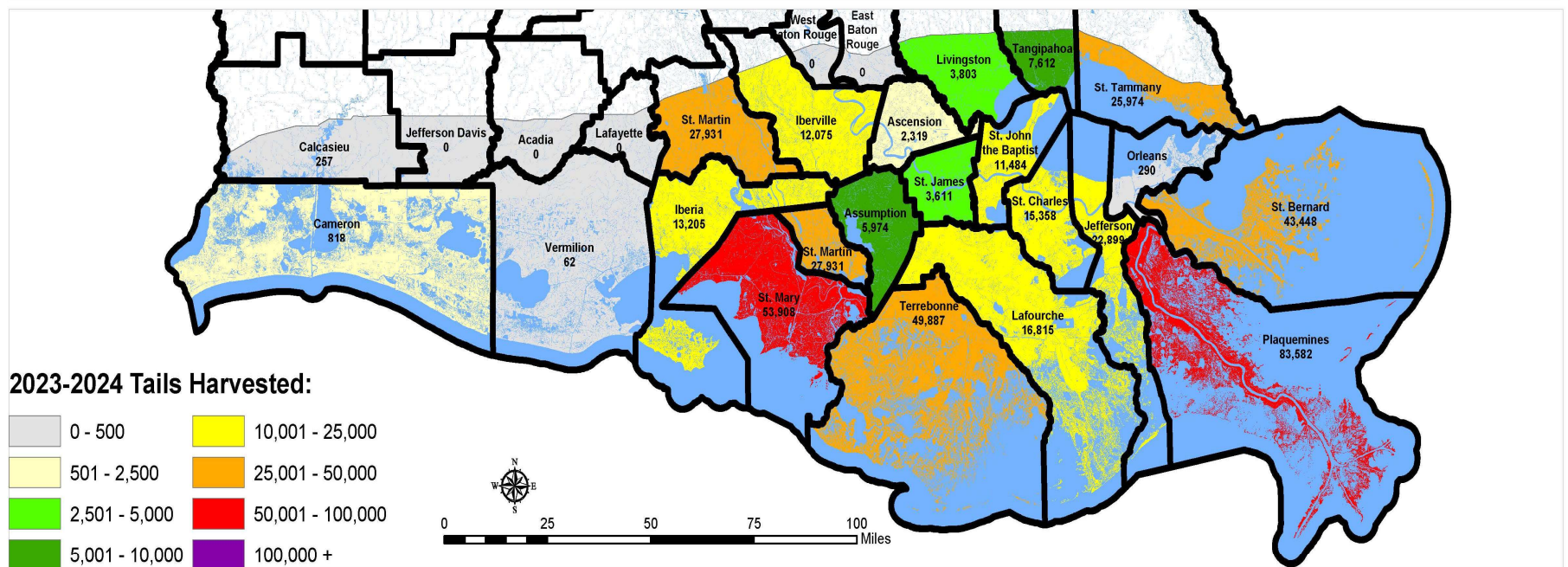
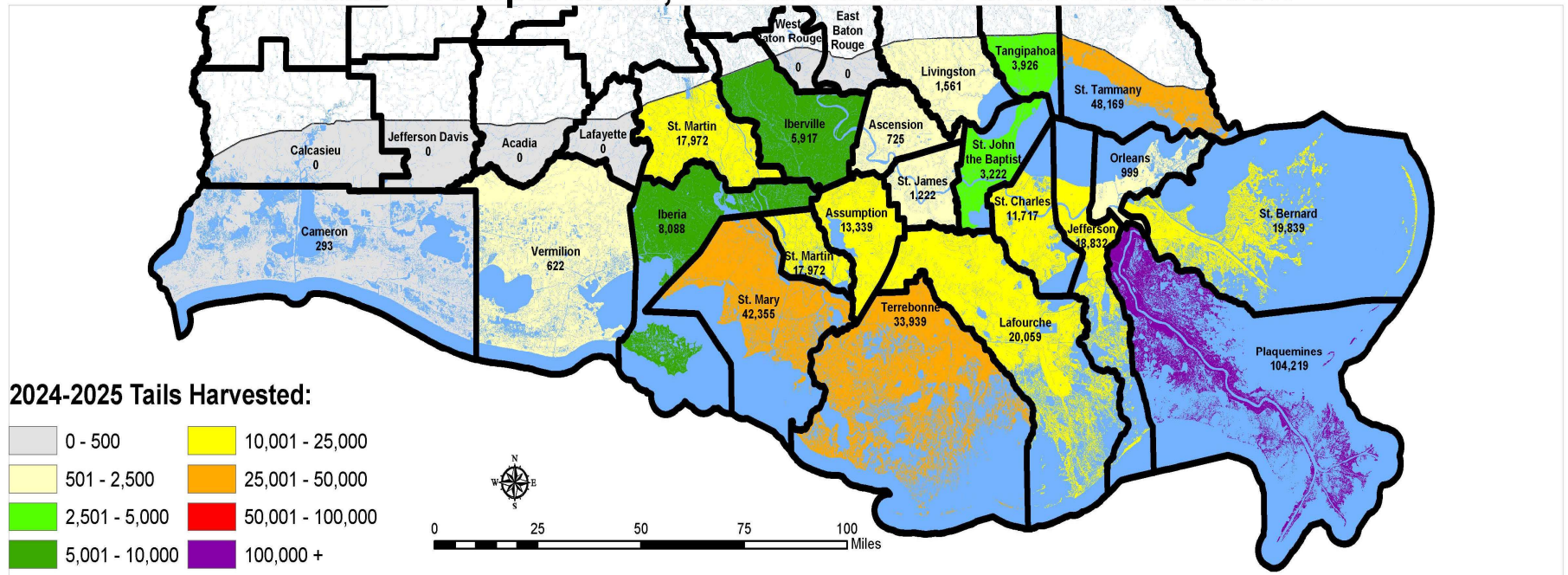
	Range	
	23-24	24-25
Fewest	10	5
Largest	47,856	63,118
Average	1,555	1,587



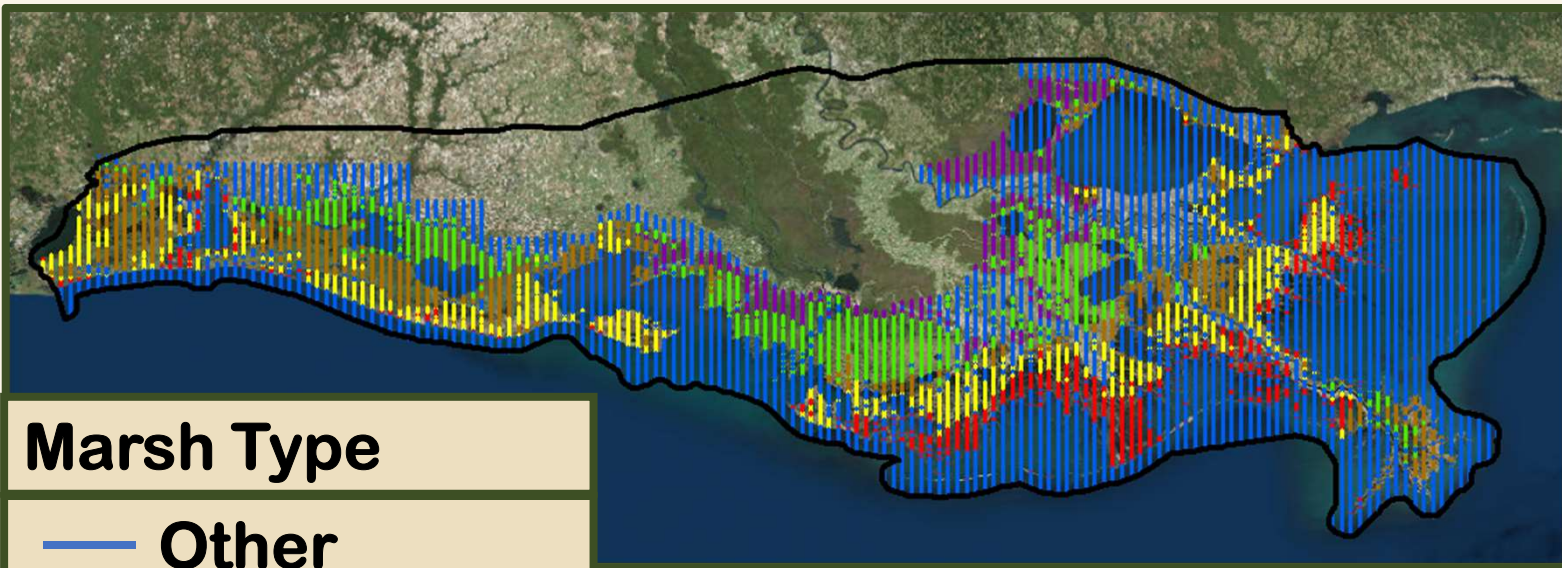
Harvest by Marsh Type



Season Comparisons, Nutria Harvest Parish Distribution



Herbivory Survey: Apr 2025



Marsh Type

- Other
- Swamp
- Fresh
- Intermediate
- Brackish
- Salt

206-B Bell Jet Ranger



Damage Assessment

Minor



Moderate



Severe



Converted to Open Water



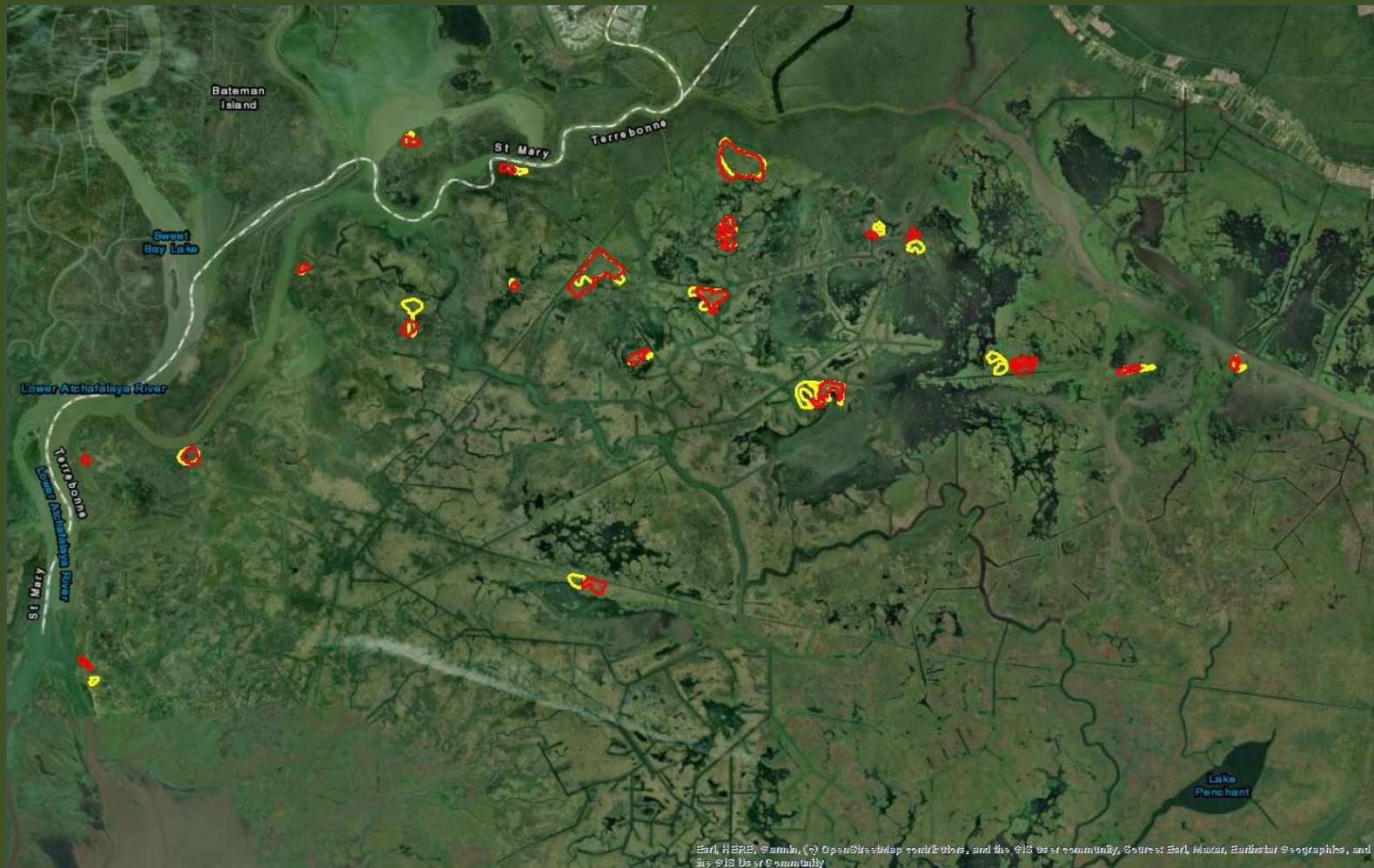
2025 Nutria Damage



Parish	Old Sites		Recovered Sites	
	# Sites	Total Acres	# Sites	Total Acres
St. Charles	1	29	---	---
St. Mary	2	38	---	---
Terrebonne	19	961	---	---
Total	22	1,028	0	0

- 1,028 ac damaged along transects
 - Extrapolated 3,854 ac coastwide
- 30% ↓ from 2024

Nutria Damage: A Seasonal Comparison



	22-23	23-24	24-25
Observed acres	1,263	1,479	1,028
Extrapolated acres	4,737	5,547	3,854



Adaptive Management 2025-2026

- **CNCP promotion through media**
 - **Trapper education**
 - **Social media**
- **Work with USFWS nutria eradication program**



Questions

- For more information:
 - <https://www.wf.louisiana.gov/page/nutria>
 - Jennifer Manuel
337-735-8674
jhogue-manuel@wfla.gov

