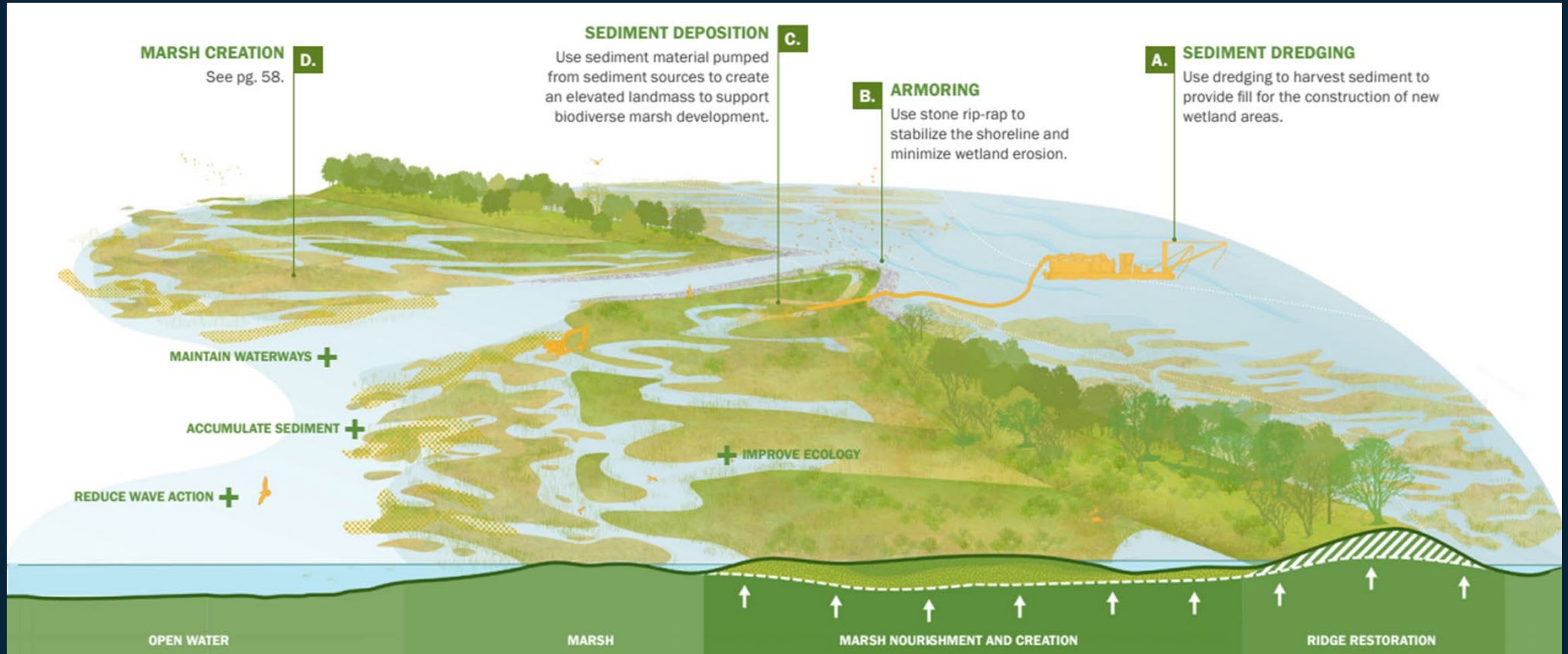




BARATARIA LANDBRIDGE RESTORATION PROGRAM (BA-0279) UPDATE

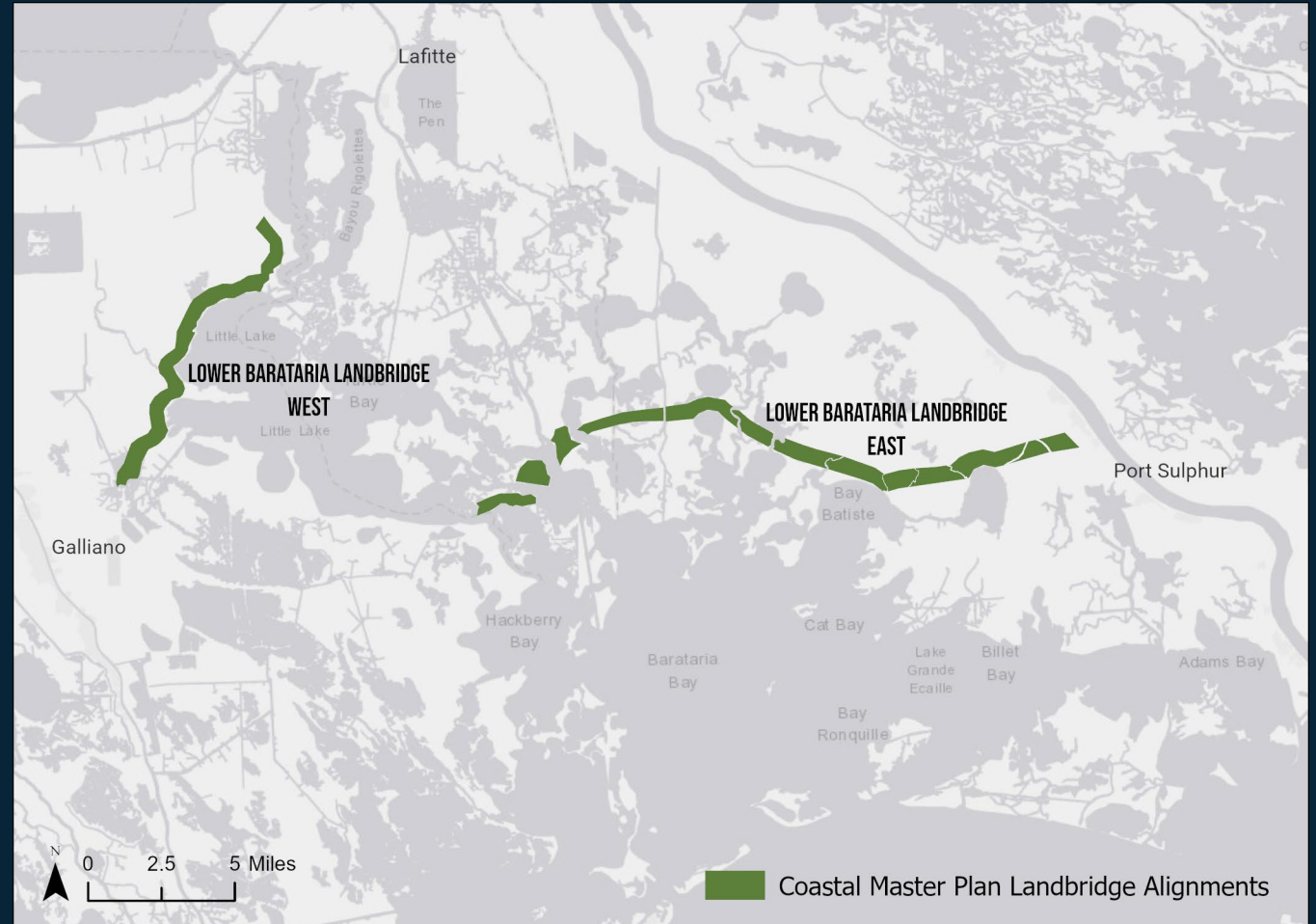


What is a Landbridge?

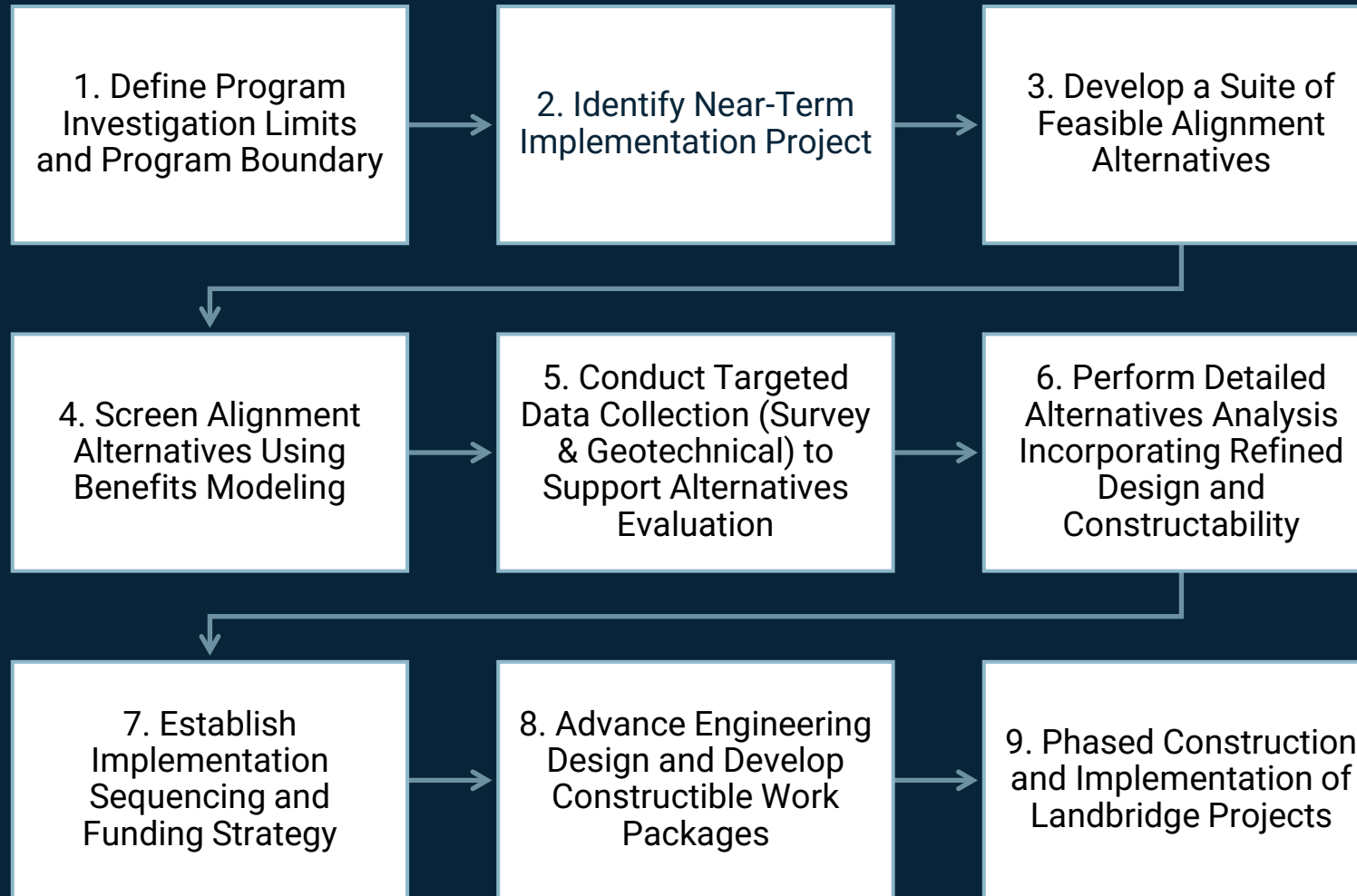


Barataria Landbridge Restoration Program Overview

- Benefits Lafourche, Jefferson, and Plaquemines Parishes
- Restores and creates marsh, reduces wave erosion, attenuates storm surge
- Built with Mississippi River and local borrow sources
- Includes shoreline stabilization and living shoreline features

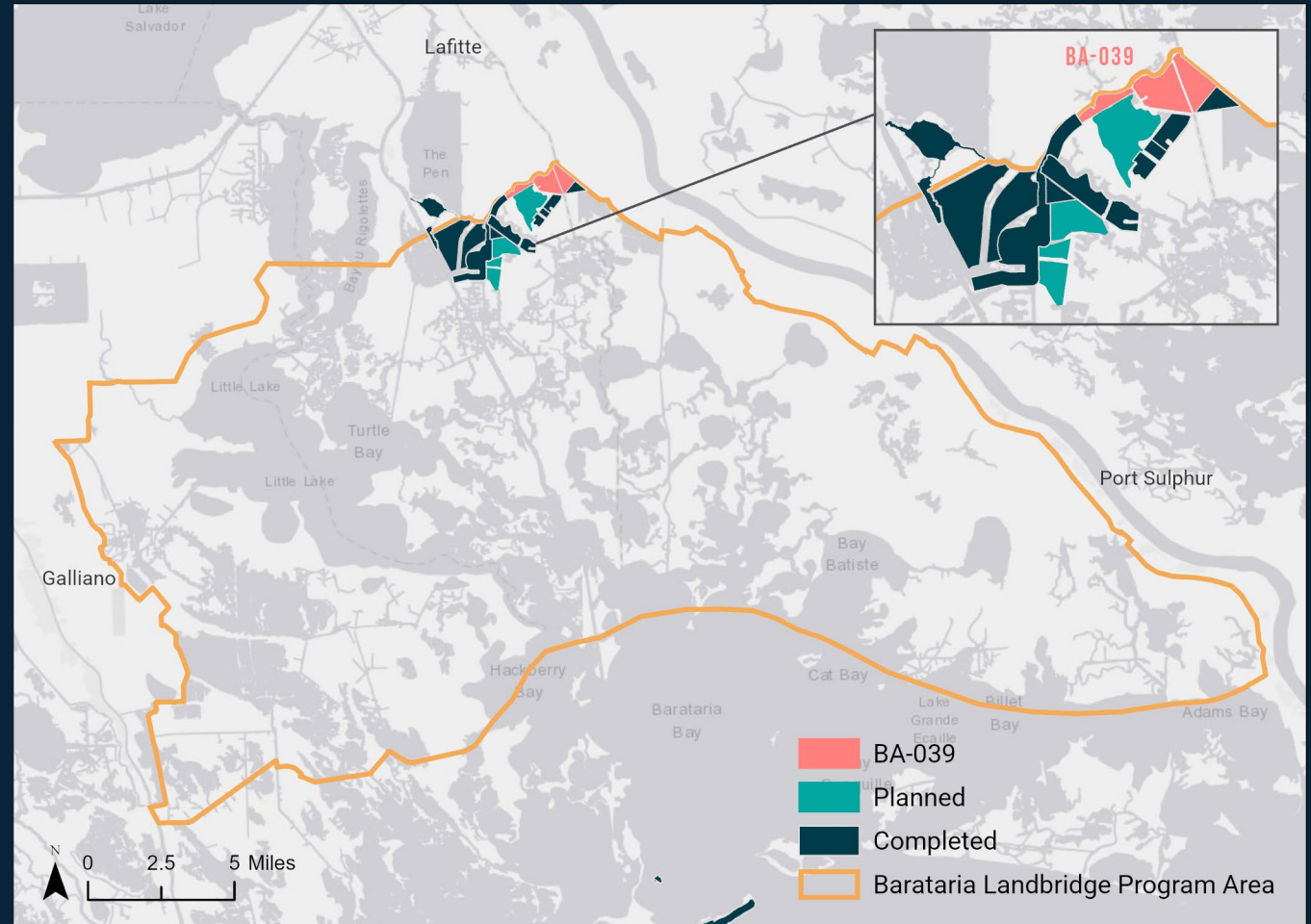


Project Development Process

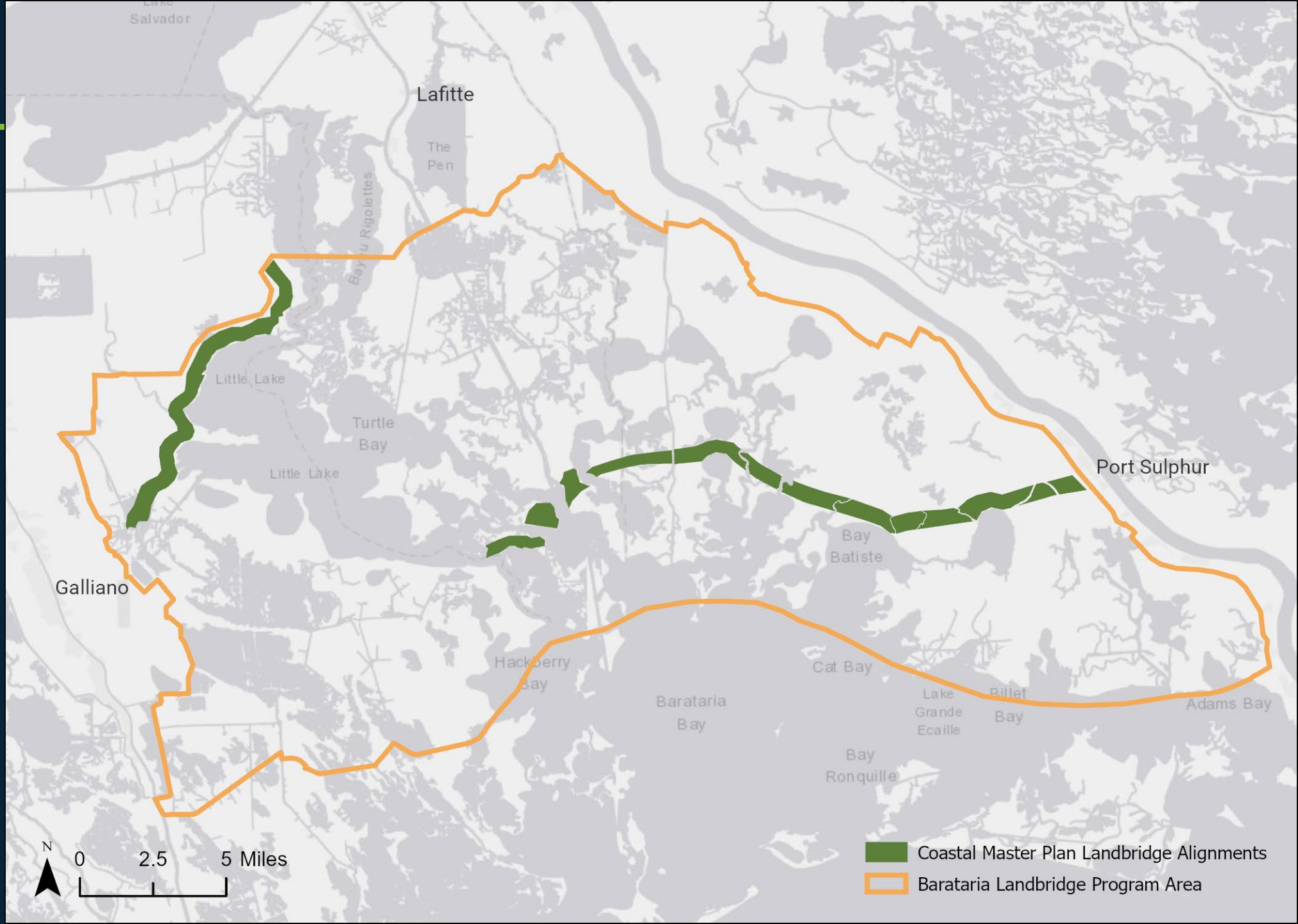




Near-Term Implementation

- Remaining component of the Bayou Dupont Sediment Delivery - Marsh Creation (BA-039)
- BA-039 funded by the LA TIG / NRDA
- Provides Near-term direct land creation
- Uses renewable river sediment
- Has Demonstrated benefits, and stakeholder and agency support

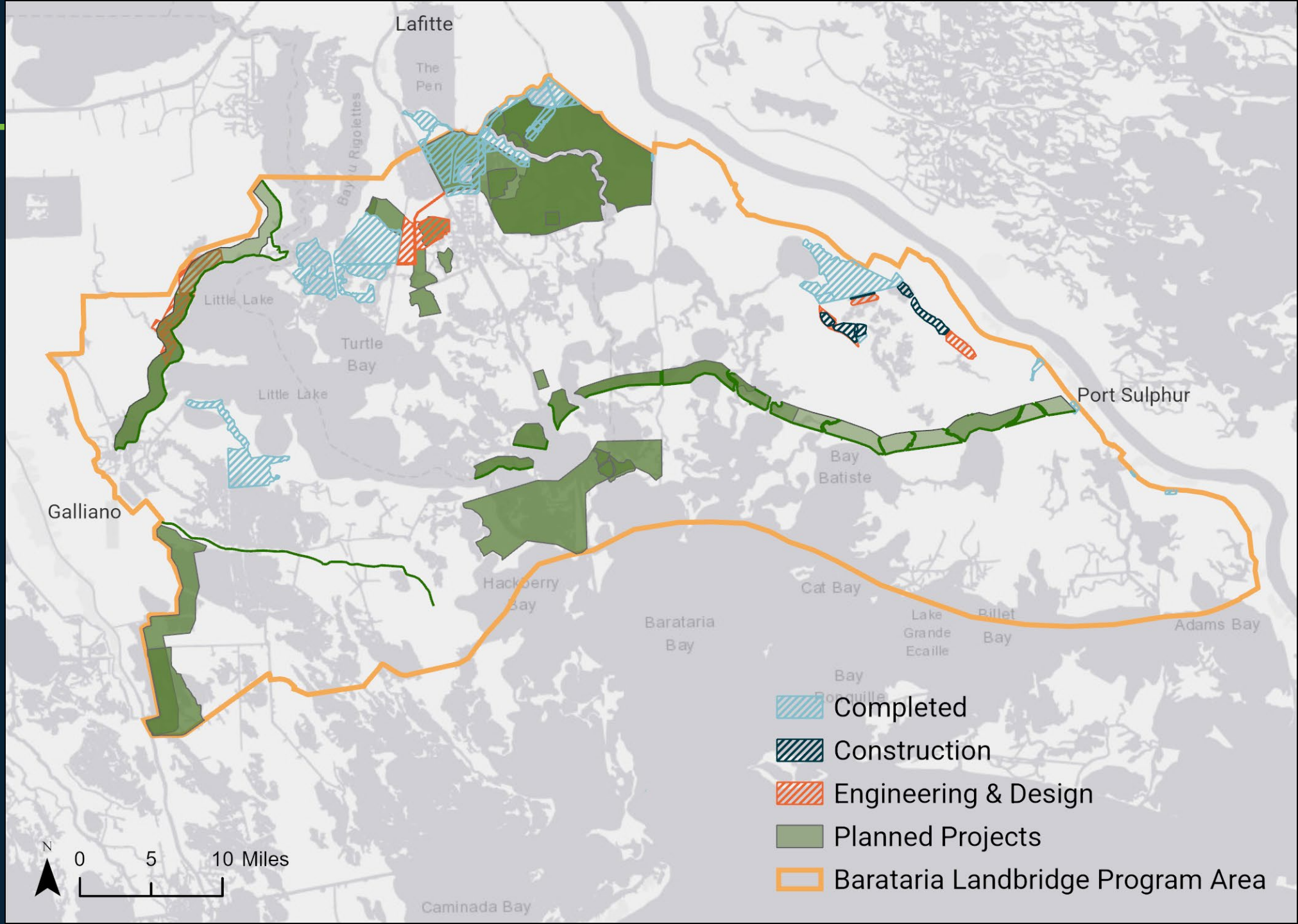


Barataria Landbridge Restoration Program Area



-  Coastal Master Plan Landbridge Alignments
-  Barataria Landbridge Program Area

Existing and Planned Projects in Program Area



Alignment Analysis Elements

- Constructed and Planned Projects
- Topography / Bathymetry
- Hydrologic Models
- Soil Types
- Vegetation Types
- Land Area Change
- Subsidence
- Oil and Gas Infrastructure
- Cultural Resources
- Landownership
- Threatened and Endangered Species
- Oyster Leases / Seed Grounds
- Restoration and Protection Benefits
- Proximity to Borrow Sources
- Cost

Questions?

Thank you!

