



ENGINEERING LLC



DELTA COAST
CONSULTANTS, LLC

Eastern Terrebonne Restoration (Terrebonne Landbridge)

**Governor's Advisory Commission on
Coastal Protection, Restoration, and
Conservation**

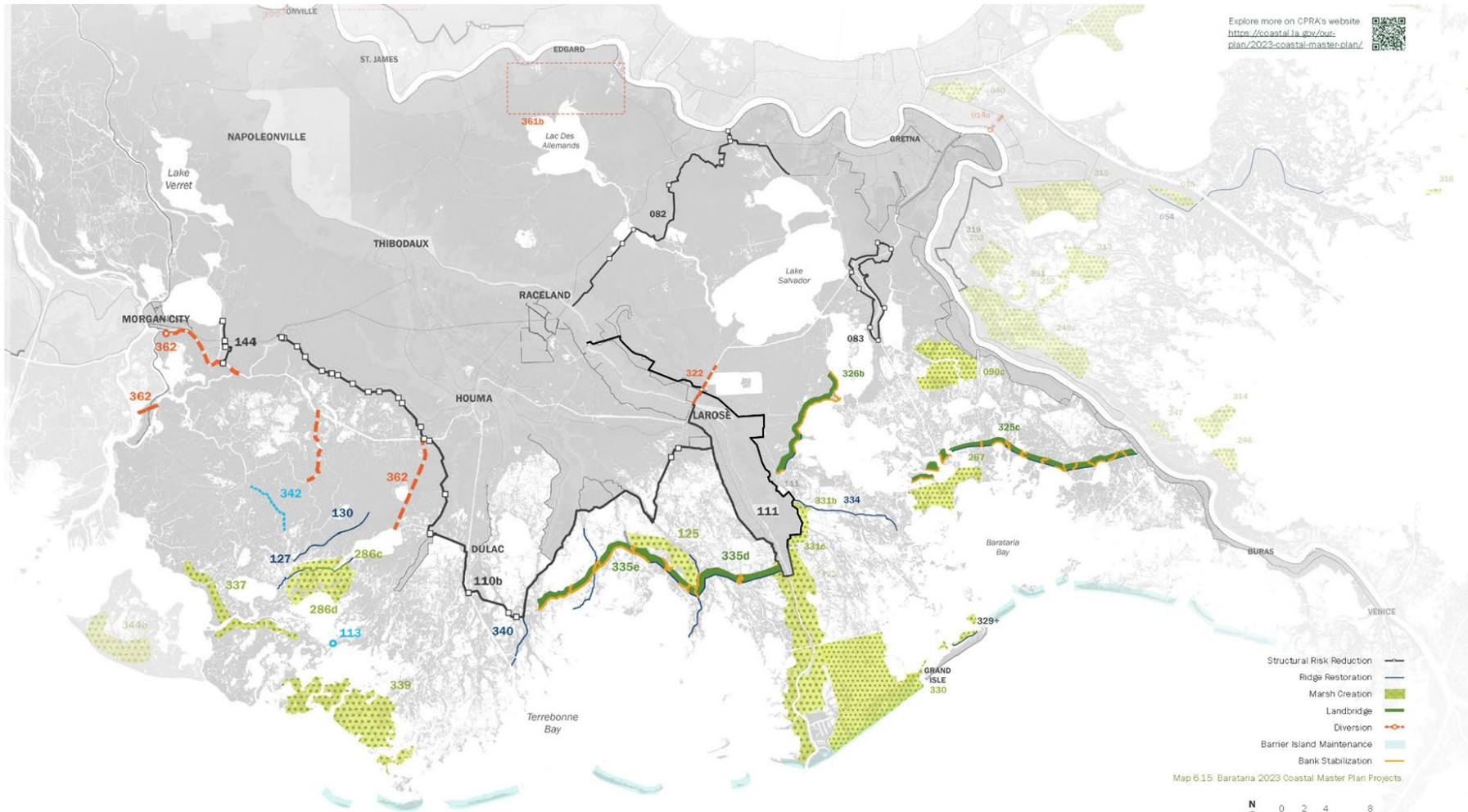


March 4, 2026



CPRA 2023 Master Plan

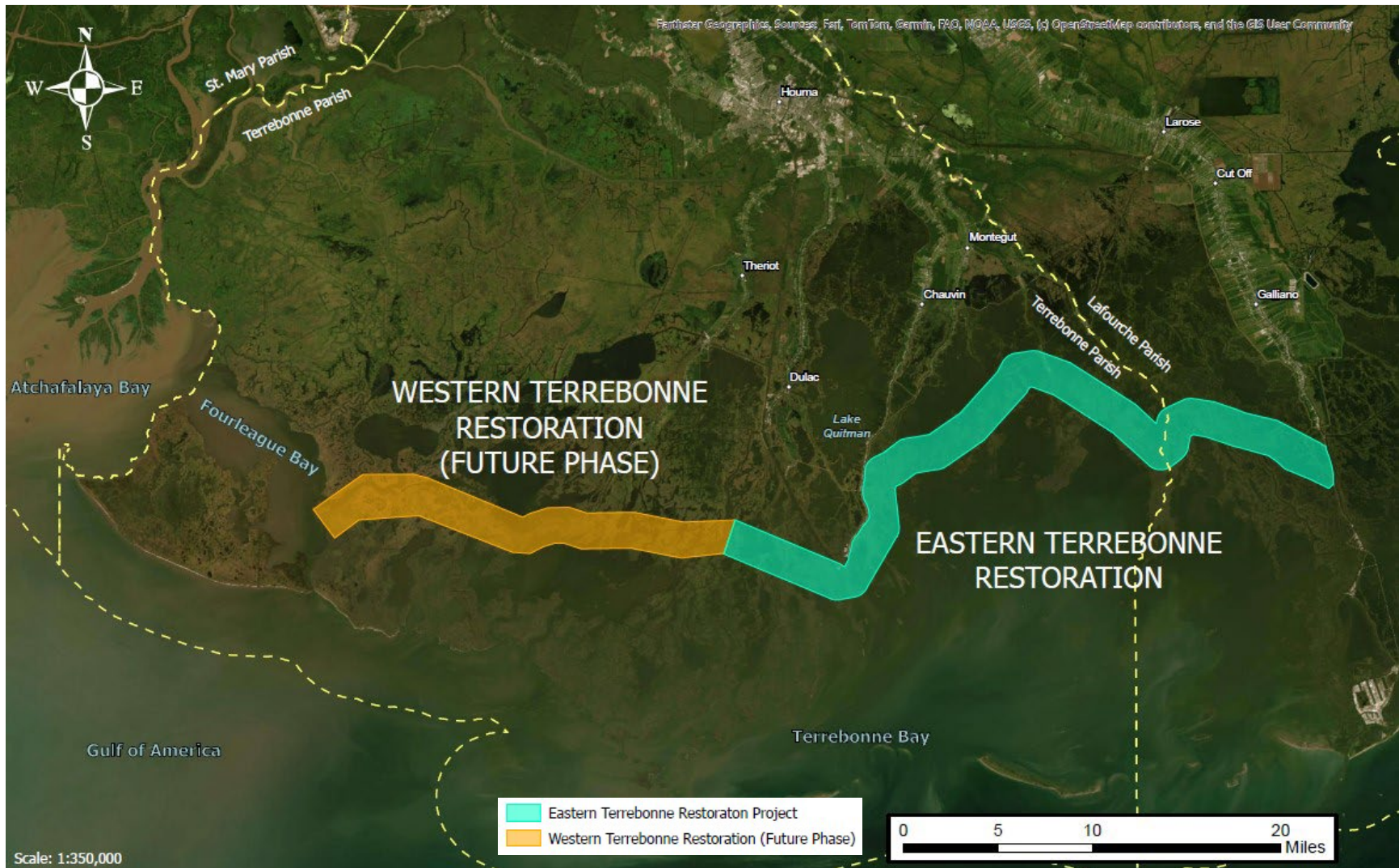
➤ Terrebonne/Barataria Projects



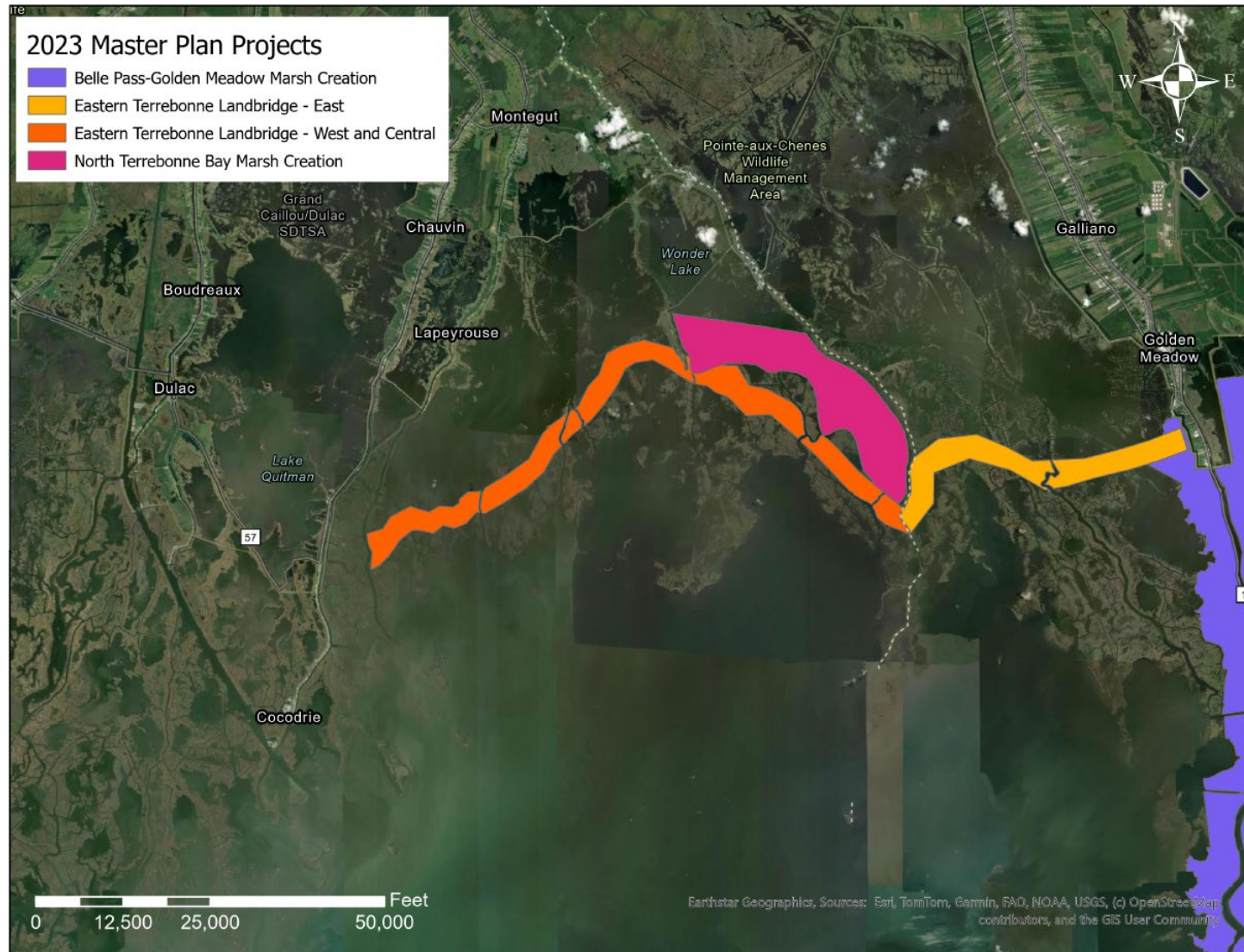
TERREBONNE / BARATARIA PROJECTS



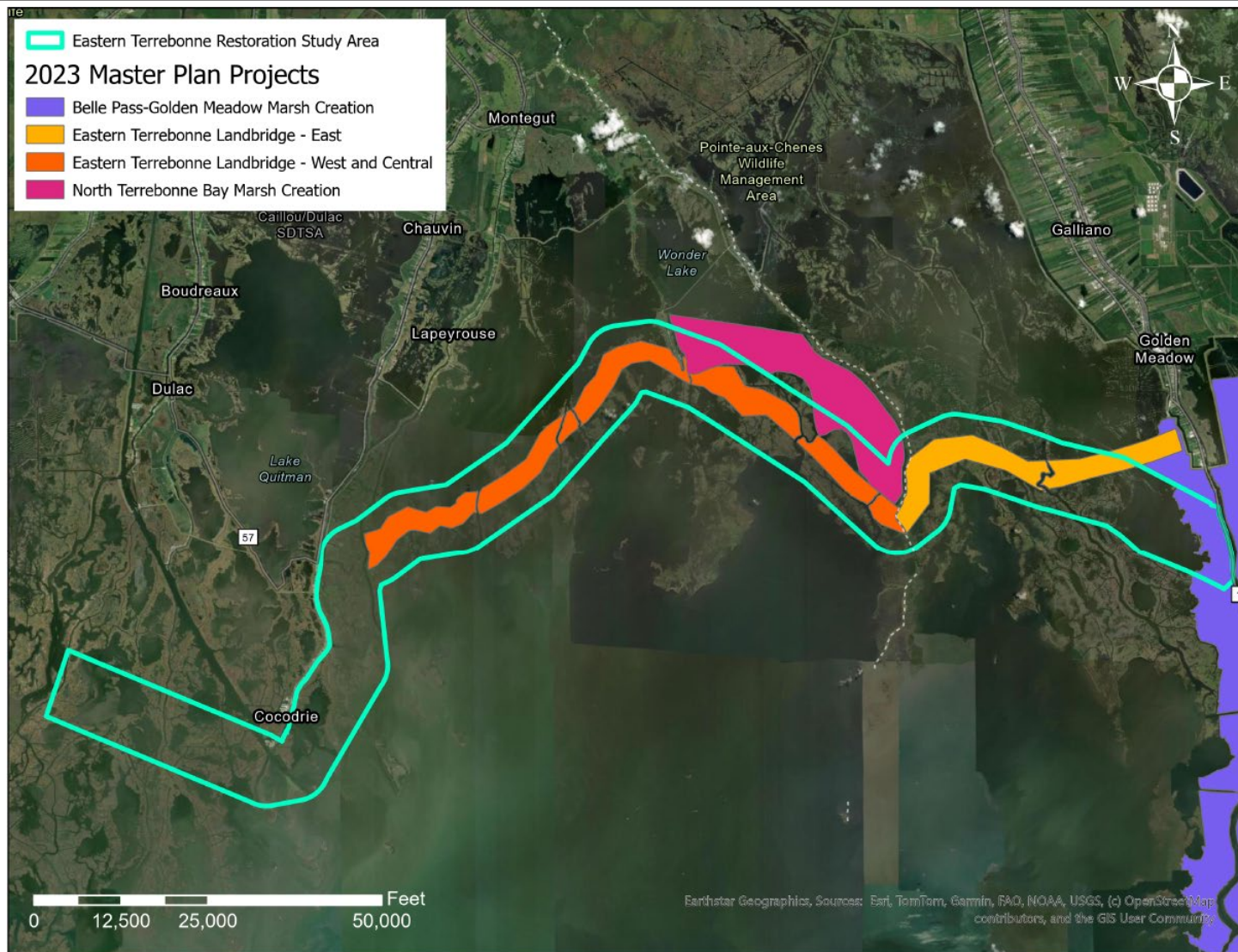
Terrebonne Landbridge - Project Area



Eastern Terrebonne Restoration - Project Area

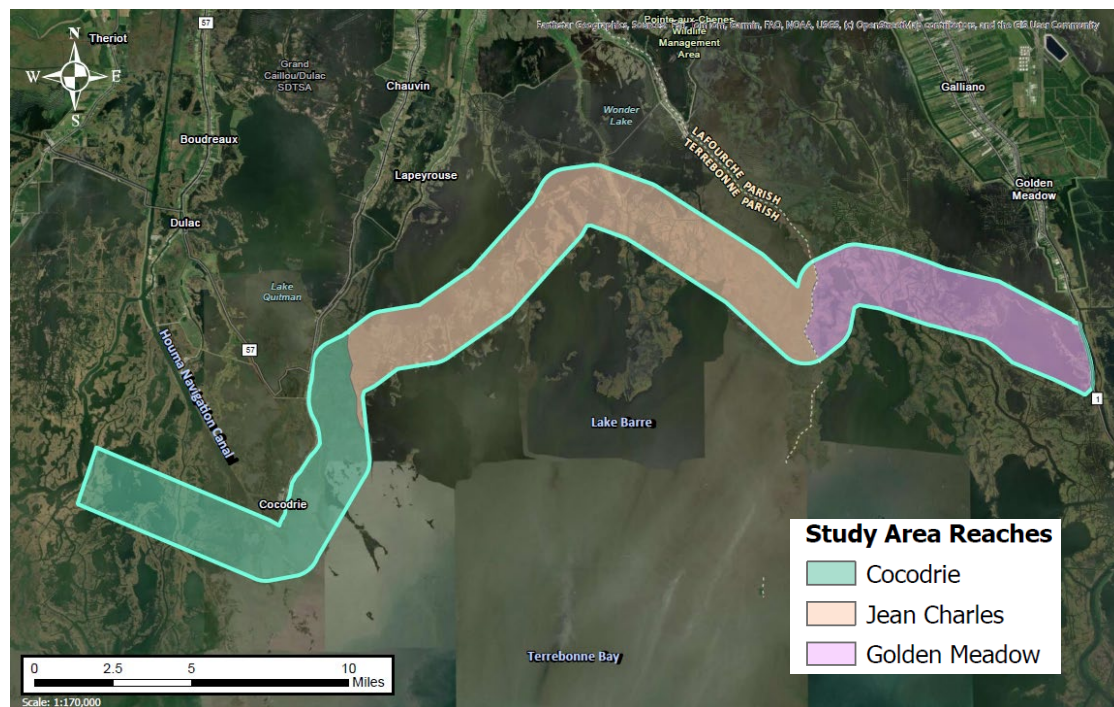


Eastern Terrebonne Restoration - Project Area



Eastern Terrebonne Restoration - Project Overview

- ~50,000-acre Study Area: 10,000 ft wide by 40 miles long
- Located in Terrebonne and Lafourche Parishes
- Divided into 3 sub reaches: Cocodrie, Jean Charles, and Golden Meadow
- Evaluating multiple coastal restoration methods:
 - Marsh Creation
 - Marsh Nourishment
 - Ridge Creation/Restoration
 - Shoreline Protection Features





Eastern Terrebonne Restoration – Scope of Work

1. Data Gap Analysis

- ❖ Compilation and evaluation of existing data from studies, reports, permits, and previous projects within the Study Area

2. Survey and Field Work

- ❖ Transects every 1500 feet. Shots every 20 feet along transect
- ❖ Geotechnical Data Collection (As needed, To-Be Approved by TLCD/CPRA)

3. Conceptual Alternative Development and Screening

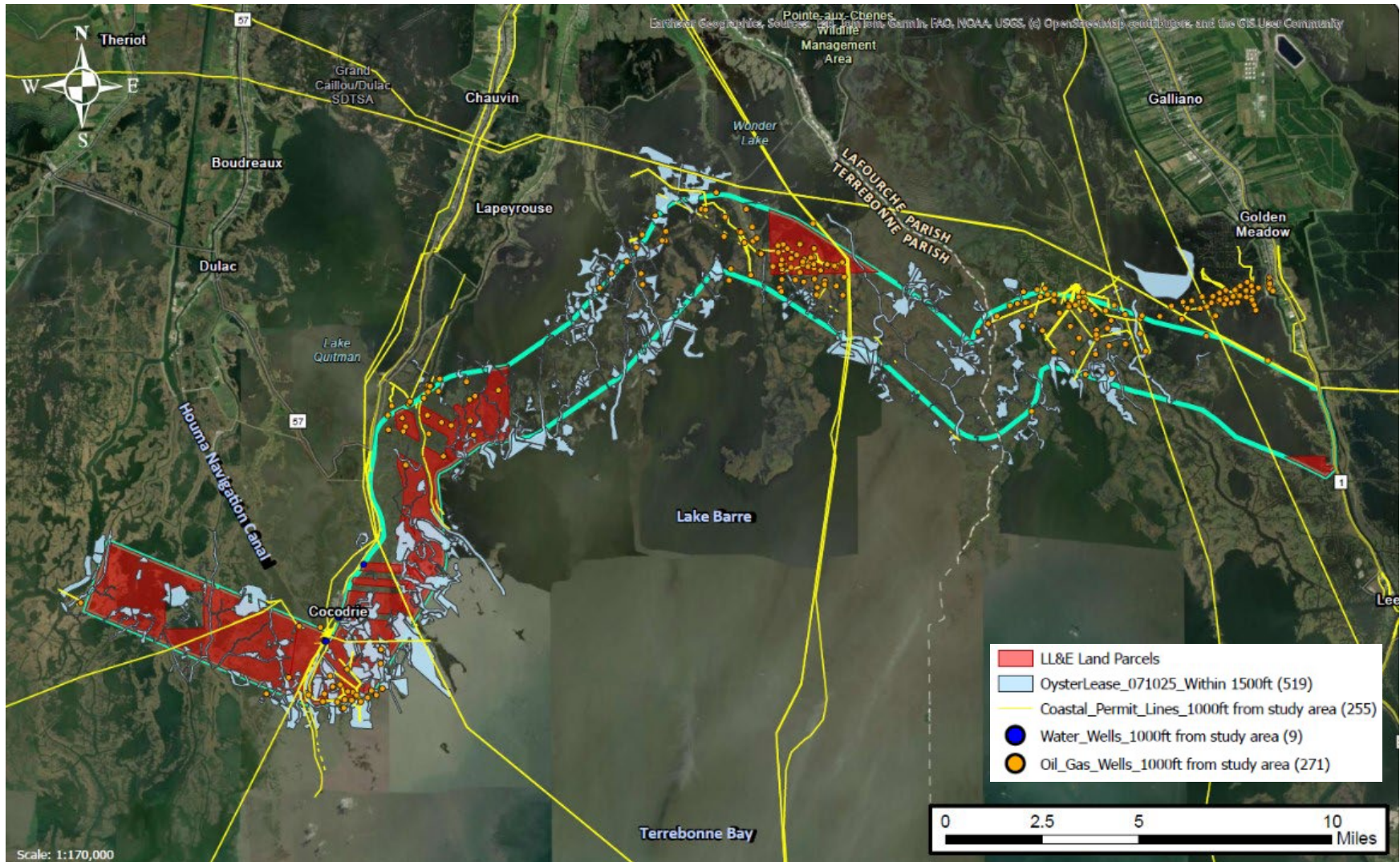
- ❖ Develop conceptual design alternatives with cost estimates and cross-sections
- ❖ Develop and propose Early Implementation Project

4. Feasibility Assessment of Selected Alternatives (Recommended Implementation Plan)

- ❖ Incorporates survey data to fully define recommended projects
- ❖ Serves as the conceptual design document to lead/assist permitting, funding, and future design phases

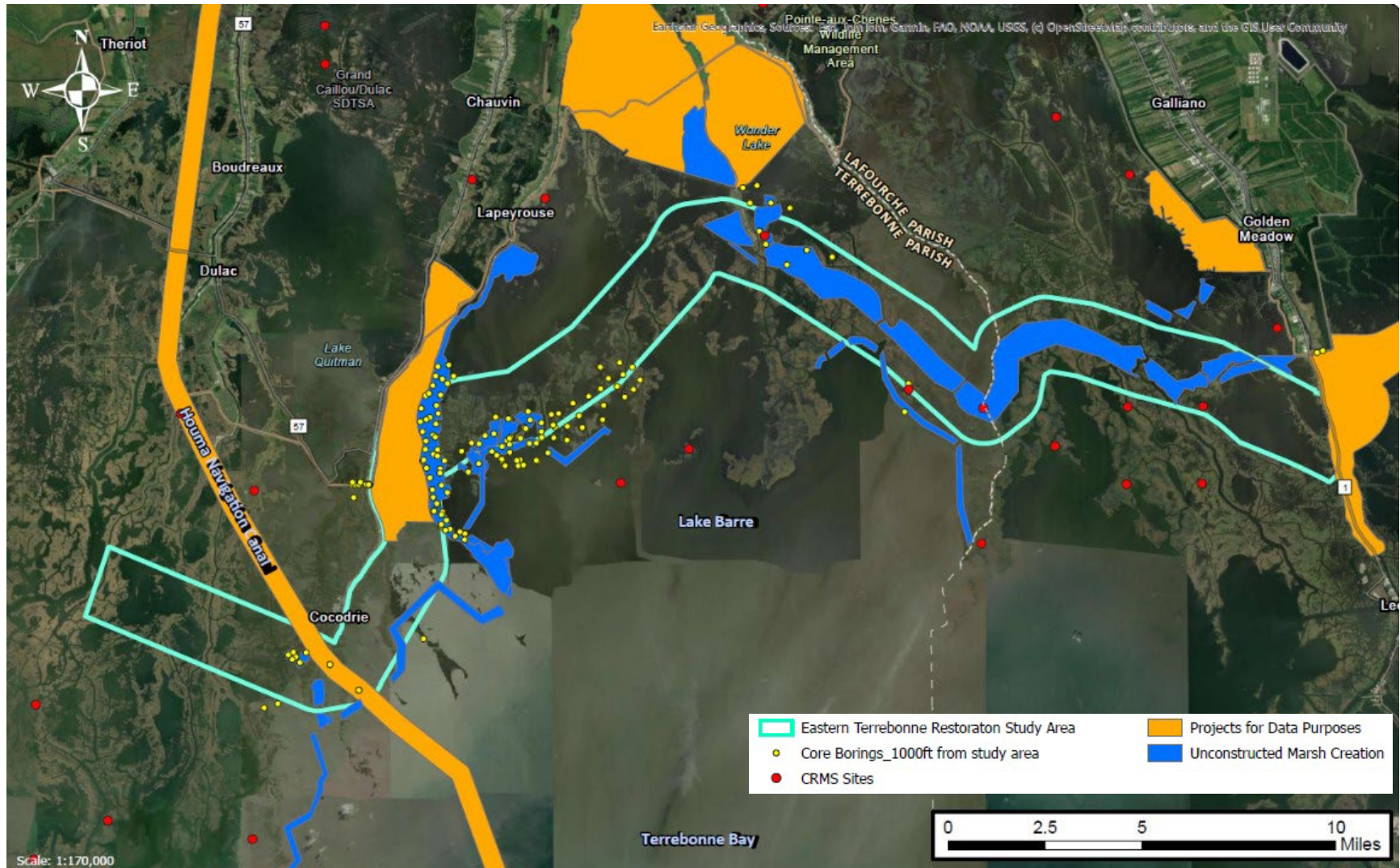
Eastern Terrebonne Restoration

➤ Data Gap Analysis: Design Constraints Map



Eastern Terrebonne Restoration

➤ Data Gap Analysis: Advantageous Data





Eastern Terrebonne Restoration

➤ Alternative Analysis Considerations

- **Topography/Bathymetry**
- **Aerial Imagery**
- **Oyster Leases & Seed Grounds**
- **Oil & Gas Infrastructure**
- **Landownership**
- **Cultural Resources & Archaeological Sites**
- **Existing Geotechnical Borings**
- **Local Water Levels (CRMS Sites)**
- **Cost of Construction**
- **Shoreline Retreat/Land Area Change**
- **Constructed and Planned Projects**
- **Proximity to Identified Borrow Sources**
- **Ecological Benefits & Habitat Diversity**
- **Equipment Access Routes**

QUESTIONS?



ENGINEERING LLC



**DELTA COAST
CONSULTANTS, LLC**

