

IMPLEMENTATION UPDATE

MICHAEL HARE, EXECUTIVE DIRECTOR



106 ACTIVE PROJECTS

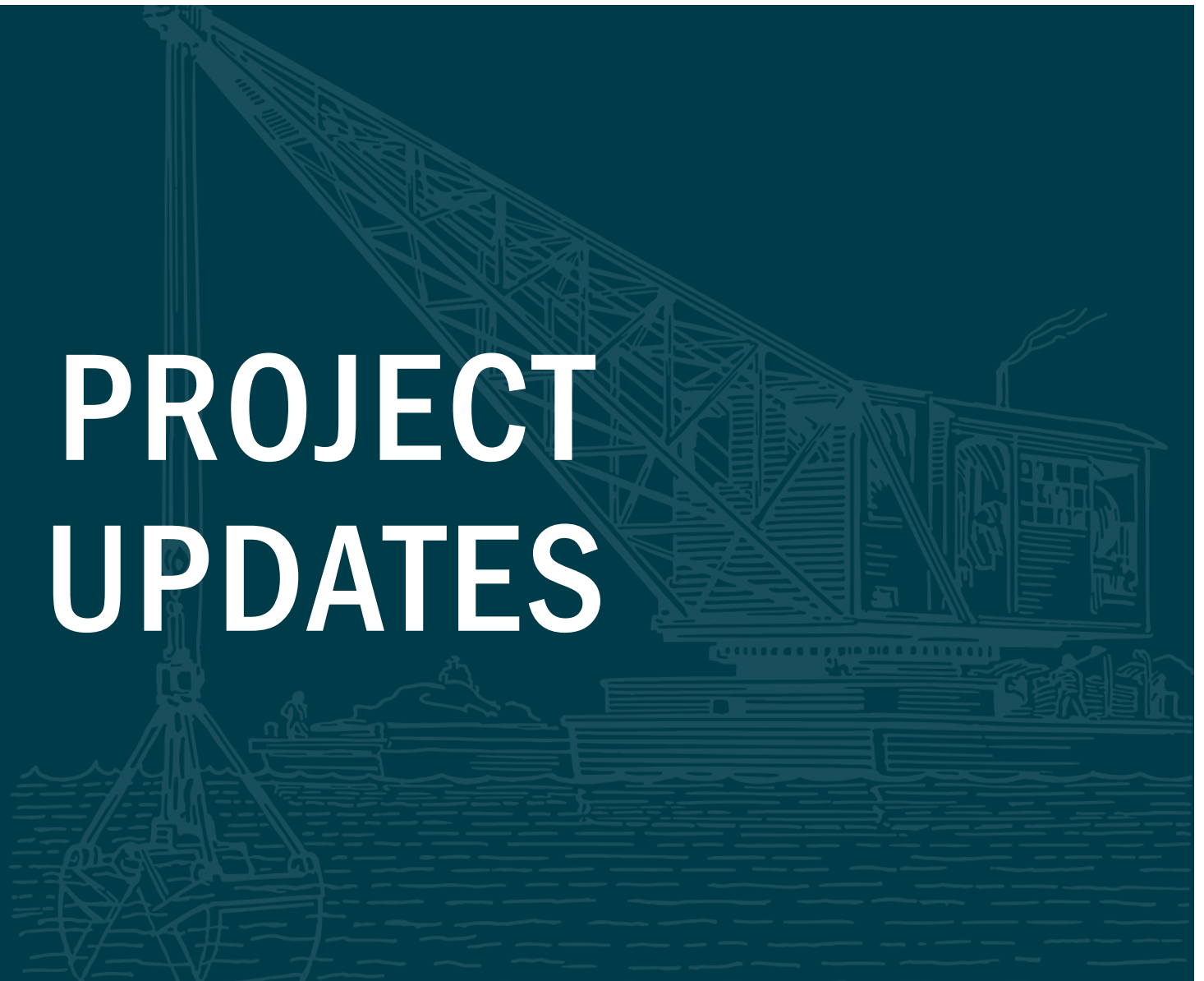
32

71

3

PROJECT TYPE	CONSTRUCTION	E & D	PLANNING
HURRICANE PROTECTION (41)	15	24	2
MARSH CREATION (30)	5	25	
BANK STABILIZATION (1)		1	
RIDGE RESTORATION (2)		2	
SHORELINE PROTECTION (7)	2	5	
BARRIER ISLANDS/HEADLANDS (3)		3	
DIVERSIONS (1)	1		
HYDROLOGIC RESTORATION (7)	2	5	
EARTHEN TERRACES (2)		2	
RECREATIONAL USE (4)	3	1	
OTHER (8)	3	4	1

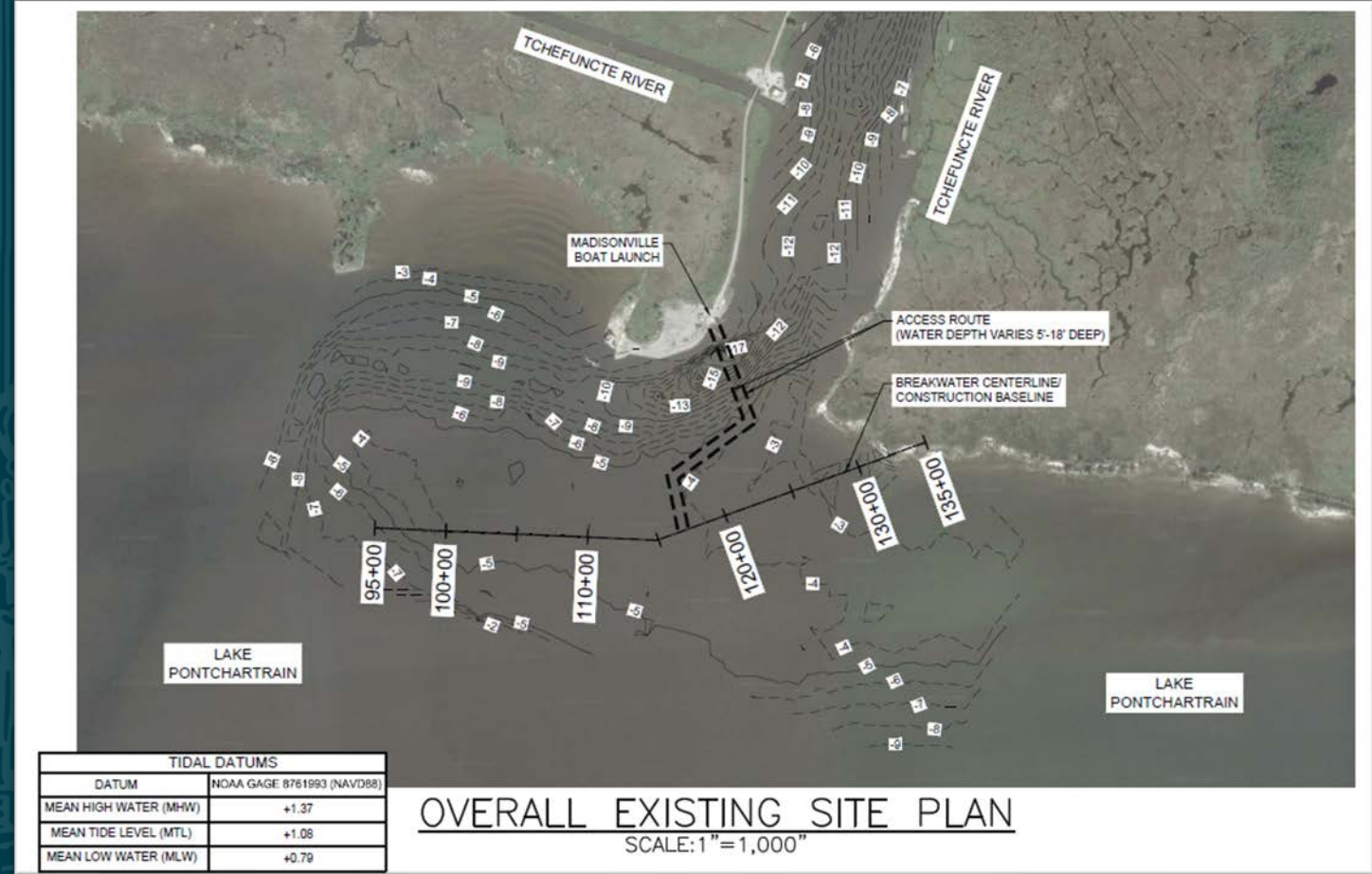
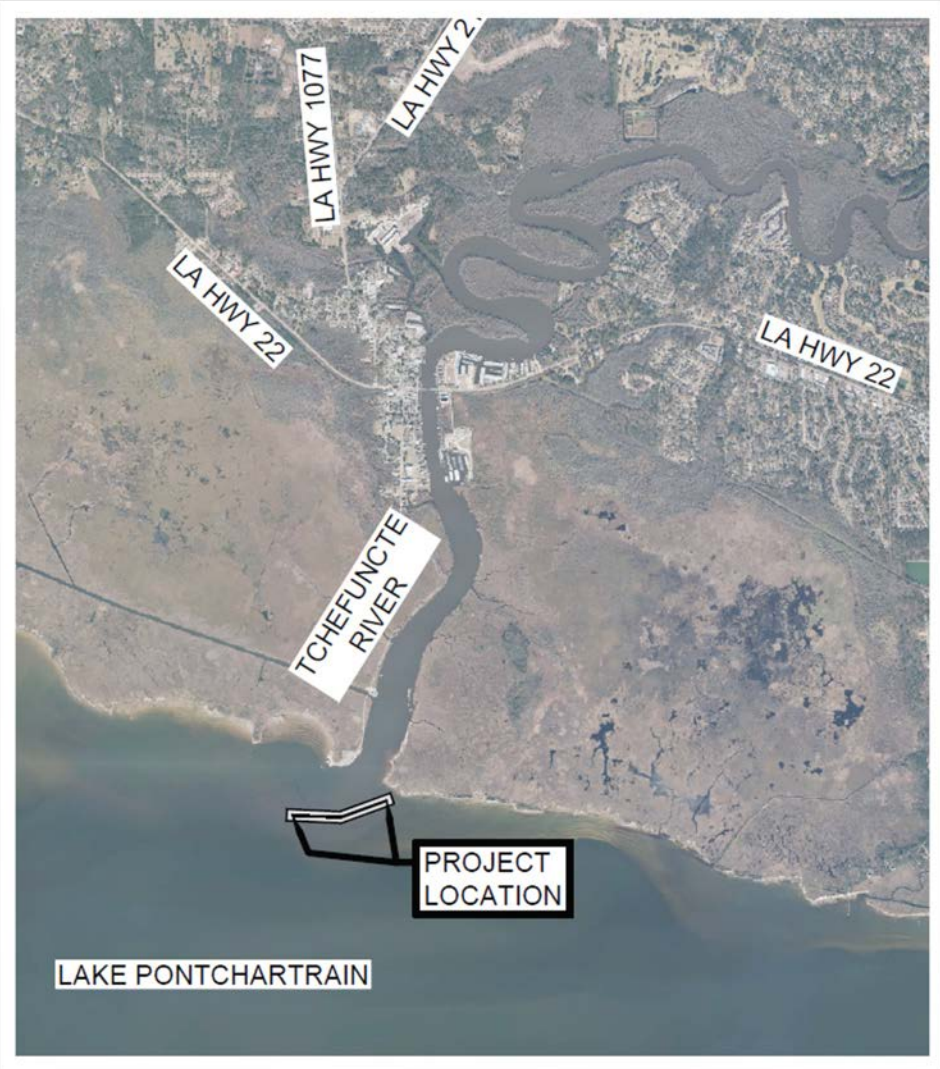
PROJECT UPDATES



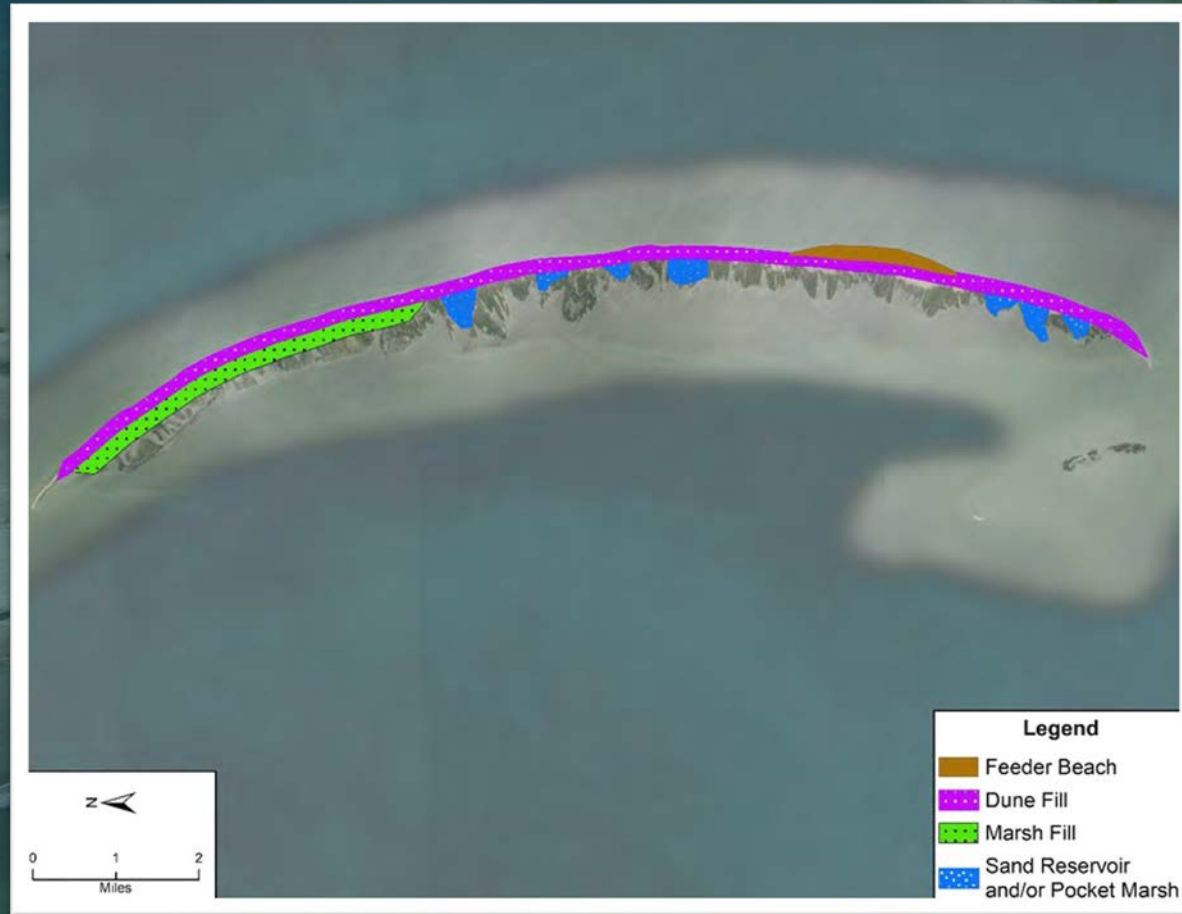


TCHEFUNCTE RIVER RIDGE RESTORATION LOWER TCHEFUNCTE BREAKWATER COMPONENT

St. Tammany Parish



LOUISIANA AND OPEN OCEAN TRUSTEES APPROVE FINAL RESTORATION PLAN FOR CHANDELEUR ISLANDS





TERREBONNE HNC ISLAND RESTORATION PROJECT COMPLETED

Terrebonne Parish

- HNC Bird Island Restoration – Completed January 2026
- Expanded habitat for Brown Pelicans & waterbirds
- Funding: \$31.7M from Deepwater Horizon & Citgo NRDA settlements
- 27.6 → 34.6 acres of suitable habitat, elevation raised by 4.3–5.5 ft.
- Designed by All South Consulting and Built by Weeks Marine Inc.
- Strengthens coastal defense, protects marshes, boosts nesting success

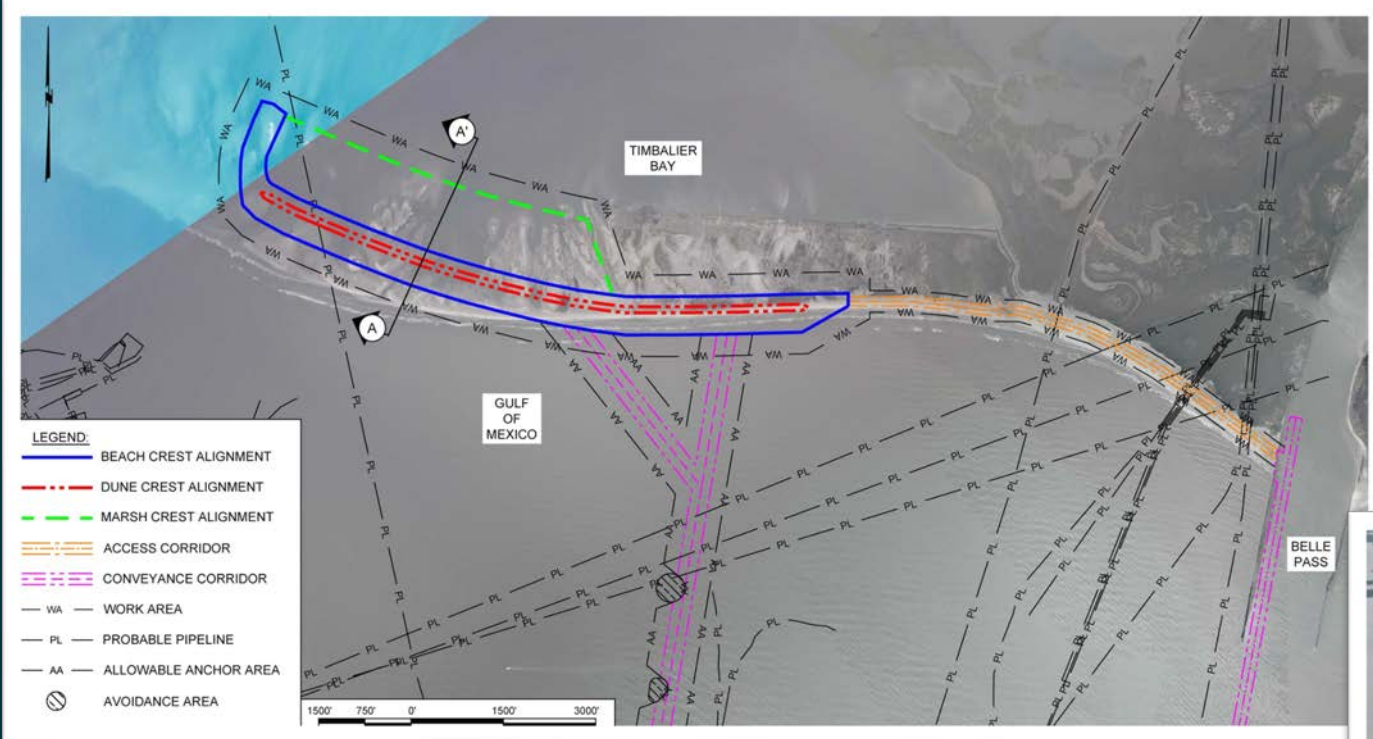




WEST BELLE HEADLAND REPAIR


Terrebonne Parish

\$75.7 M FEMA GRANT AWARDED



FEMA





PARISH MATCHING PROGRAM UPDATE

CPRA PARISH MATCHING PROJECTS IN ST. TAMMANY PARISH





ADDITIONAL UPDATES

Federal Funding Earmarks for Louisiana's Coast

USACE Earmarks requested by CPRA (St. Tammany area):

- \$3.25M Investigation: St. Tammany Parish Flood Risk Management. (Scalise/Cassidy/Kennedy)
- \$7M Investigation: MRGO Ecosystem Restoration. (Cassidy/Kennedy)
- \$500K Investigation: Lake Pontchartrain Storm Surge Reduction - initial study. (Scalise/Cassidy/Kennedy)

Coastal Earmarks not driven by CPRA:

- \$500K Investigation: Lake Pontchartain and Vicinity 200-YR study. (Scalise/Kennedy)
- \$500K Construction: Southeast Louisiana. (Cassidy/Kennedy)
- \$3.2M Construction: Pointe Celeste Pump Station, via Section 219 Environmental Infrastructure Program. (Scalise/Kennedy/Cassidy)

Earmarks for CPRA via NOAA:

- \$1.9125M NOAA-funded earmark for a suite of projects in Southwest Louisiana. (Higgins)



CWPPRA'S 35TH PRIORITY PROJECT LIST AND PHASE II CONSTRUCTION ANNOUNCEMENTS

Phase I Engineering & Design

- Bayou L'Ours Ridge Restoration and Marsh Creation
- Bayou Thunder Marsh Creation
- Gulf Shoreline Protection West
- Shore Shells Concrete Dome Structure Demonstration Project

Phase II Construction

- Northwest Little Lake Marsh Creation (BA-0268)
- Sabine Marsh Creation Cycles 6 & 7 (CS-0081)

ENGINEERS DAY AT THE LSU CENTER FOR RIVER STUDIES



CELEBRATE

WOMEN IN



SCIENCE • TECHNOLOGY • ENGINEERING • MATHEMATICS

03.07.2026

LSU | Center for River Studies

100 TERRACE AVE., BATON ROUGE, LA 70802

9:00 A.M. - 12:00 P.M.



SAVE THE DATE

EIGHTH ANNUAL

COOK-OFF

FOR

THE COAST

DOCVILLE FARM

2026

28TH OF FEBRUARY

A photograph of the Louisiana State Capitol building in Baton Rouge, Louisiana, under a clear blue sky. The building is a tall, classical-style structure with a prominent central tower. In the foreground, there are lush green trees, a paved walkway, and a street lamp. The text 'COASTAL DAY 2026' is overlaid in large white letters on the left side of the image.

COASTAL

DAY 2026

AT THE LOUISIANA LEGISLATURE

MONDAY, MARCH 30, 2026

COASTAL CONNECT

Matchmaking & Networking Expo



Meet. Connect. Grow.



LSU | Center for River Studies

March 30, 2026 | 8:00 a.m. - 11:00 a.m.

CONNECT WITH US!



@LOUISIANACPRA

