



## 2026 Coastal Protection & Restoration Projects Update

---

*President Mike Cooper*

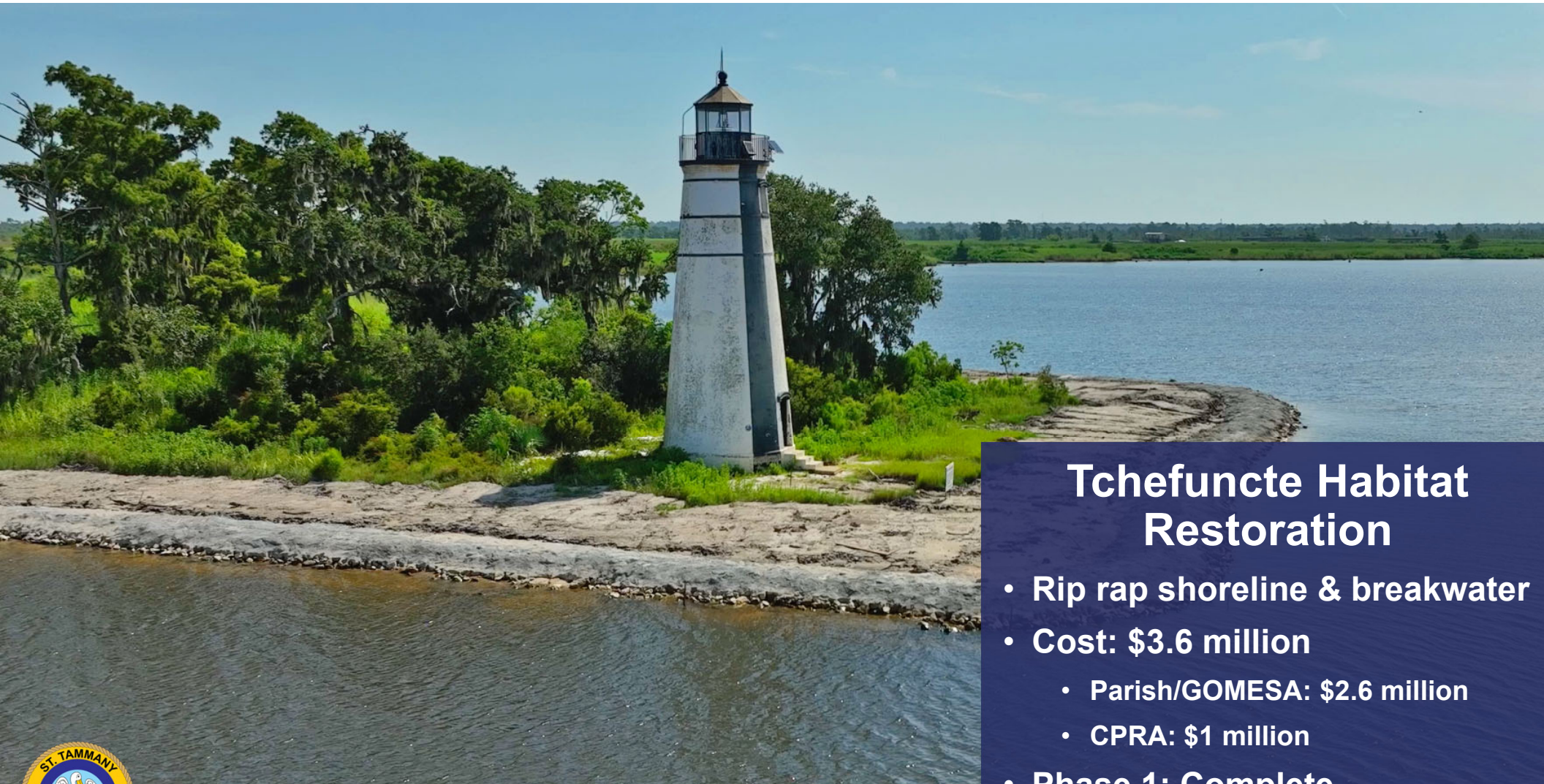


# Parishwide Coastal Projects

- Carr Dr. Hydrology Restoration
- Davis Canal Restoration
- Lake Pontchartrain Barrier Project
- Lock No. 1 Boat Launch
- Mandeville Lakefront Wetlands
- Materials of Opportunity Feasibility Study
- Northshore Living Shorelines
- Pearl Study
- Pearl River Diversion Canal Restoration
- Salt Bayou Marsh Creation
- Slidell Breakwater Restoration
- Slidell Pier Breakwater Restoration
- Tchefuncte Habitat Restoration
- Tchefuncte Peninsula
- Lower Tchefuncte Breakwater Restoration
- Tchefuncte West Bank Marsh Restoration
- Wetlands Plan



**Mike Cooper**  
*Parish President*

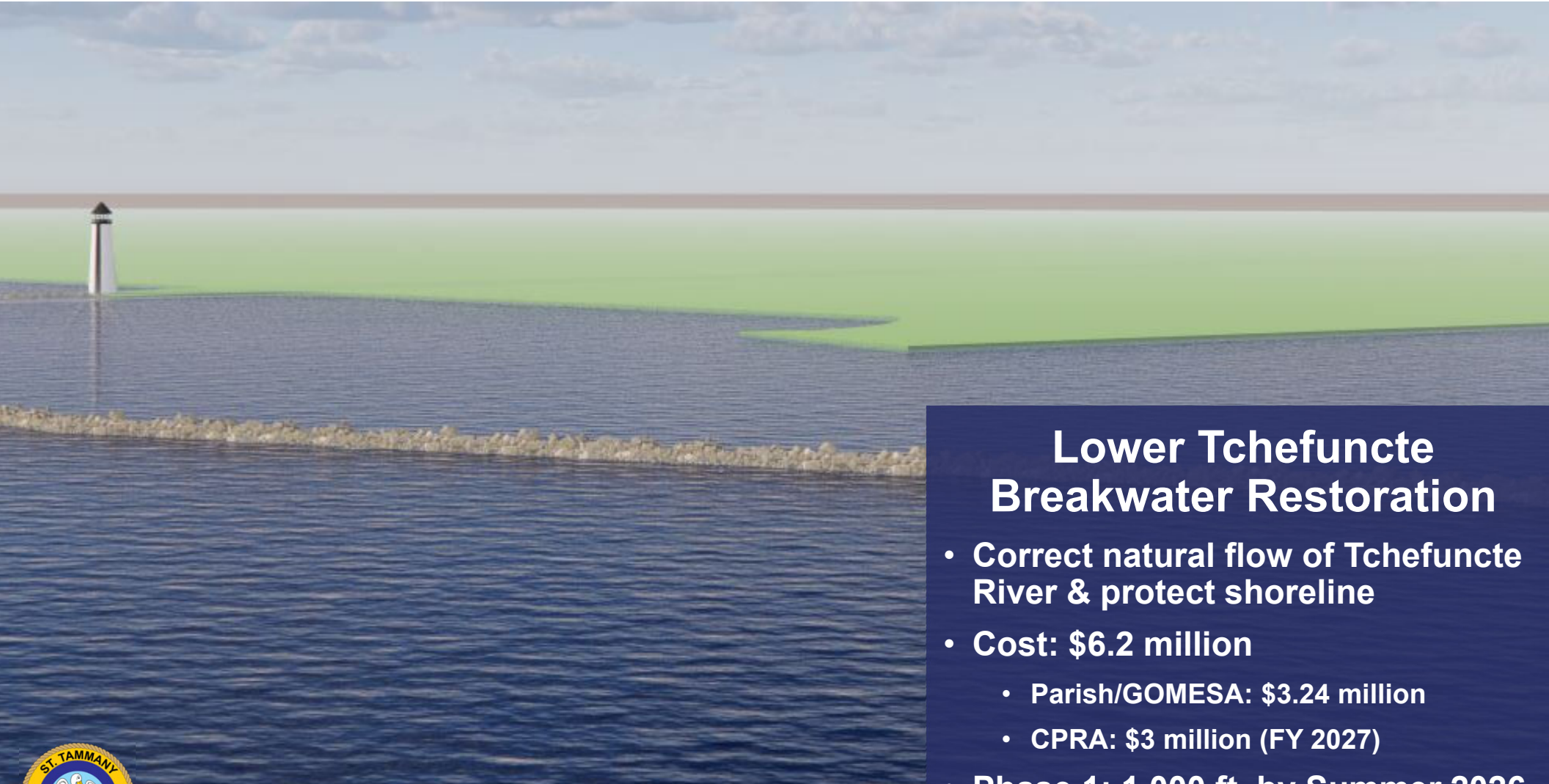


## Tchefuncte Habitat Restoration

- Rip rap shoreline & breakwater
- Cost: \$3.6 million
  - Parish/GOMESA: \$2.6 million
  - CPRA: \$1 million
- Phase 1: Complete
- Phase 2: Final Design Phase



**Mike Cooper**  
*Parish President*

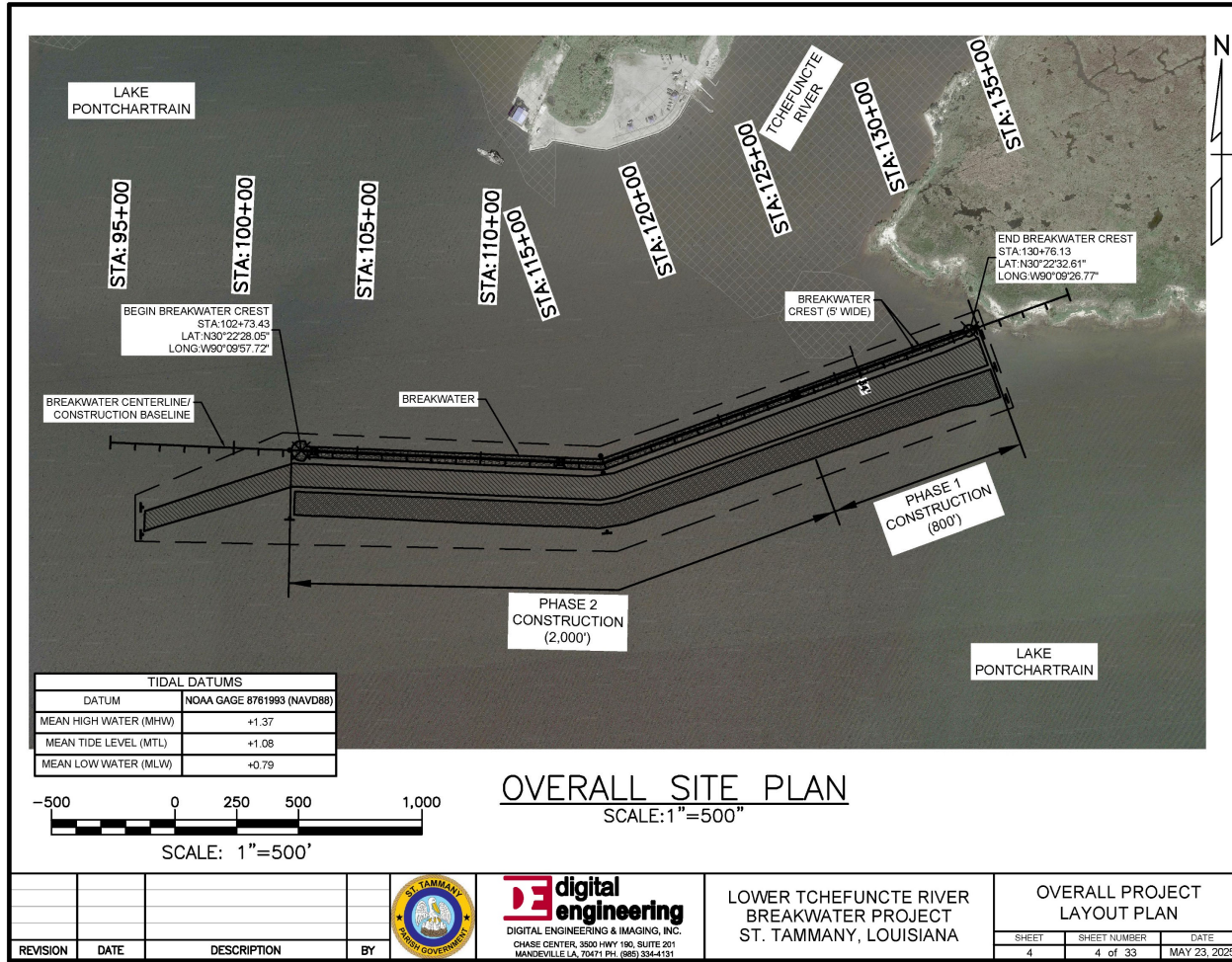


## Lower Tchefuncte Breakwater Restoration

- Correct natural flow of Tchefuncte River & protect shoreline
- Cost: \$6.2 million
  - Parish/GOMESA: \$3.24 million
  - CPRA: \$3 million (FY 2027)
- Phase 1: 1,000 ft. by Summer 2026
- Phase 2: 2,000 ft. in FY 2027



**Mike Cooper**  
*Parish President*



**Mike Cooper**  
Parish President

# Tchefuncte Peninsula

- Protect, restore & enhance the natural hydrology & habitat of the Tchefuncte River watershed
- Cost: \$485k (Parish/GOMESA)
- Design Only: 10%



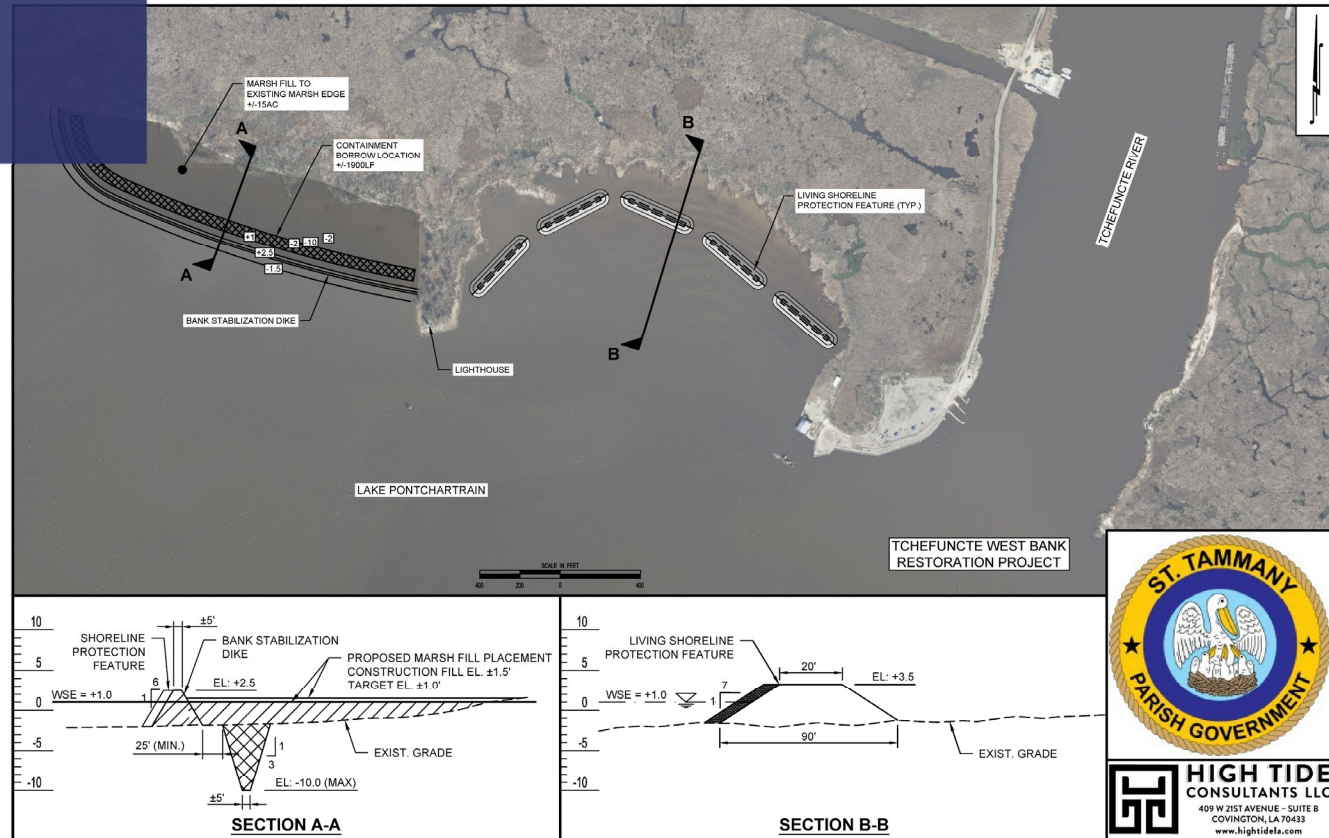
**Mike Cooper**  
*Parish President*



**HIGH TIDE CONSULTANTS LLC**  
409 W 21ST AVENUE - SUITE B  
COVINGTON, LA 70433  
[www.hightide.com](http://www.hightide.com)

# Tchefuncte West Bank Marsh Restoration

- Proposal to rebuild land to the east & west sides of the Tchefuncte River Lighthouse
- Cost: \$240k (Parish/GOMESA)
- Design Only: 95%



**Mike Cooper**  
Parish President





## St. Tammany Artificial Reefs

- 4-acre reef placed off Goose Point in June 2025. More scheduled including of Twin-Span material.
- Cost: \$345k (Parish/GOMESA-CCA/LDWF)



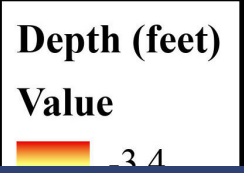
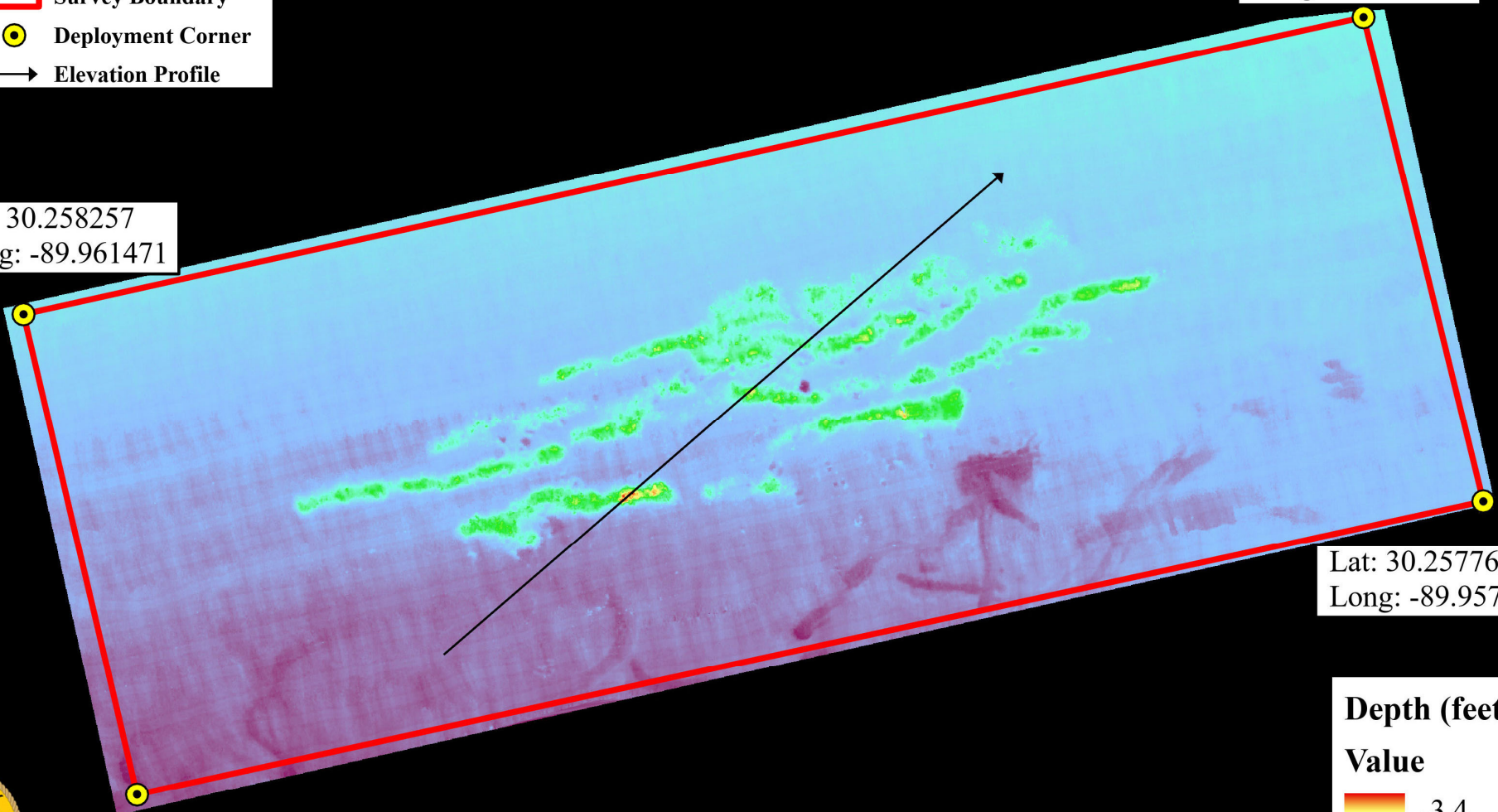
**Mike Cooper**  
*Parish President*

- Survey Boundary
- Deployment Corner
- Elevation Profile

Lat: 30.258941  
Long: -89.957709

Lat: 30.258257  
Long: -89.961471

Lat: 30.257760  
Long: -89.957389



**Mike Cooper**  
*Parish President*



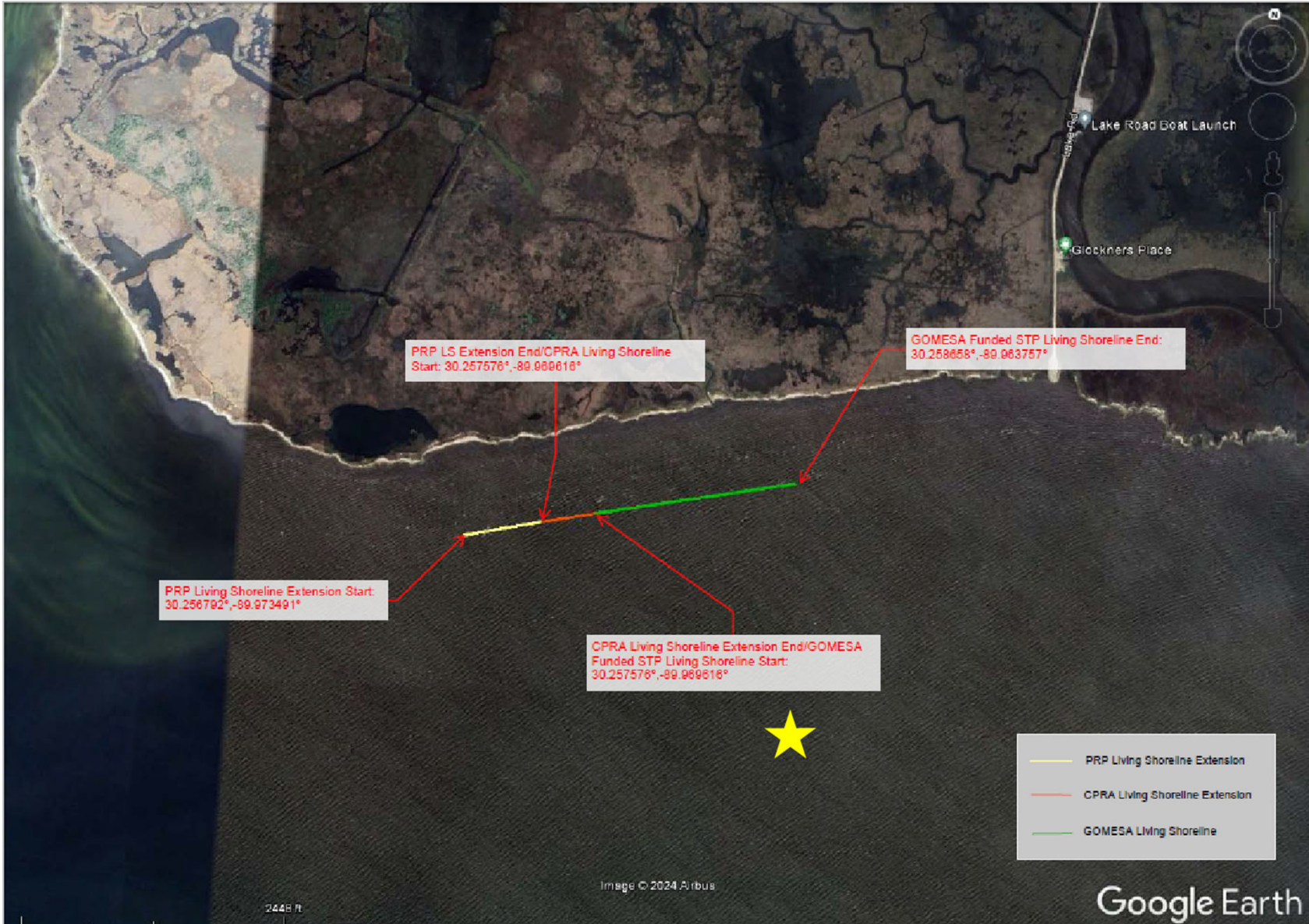
Goose Point

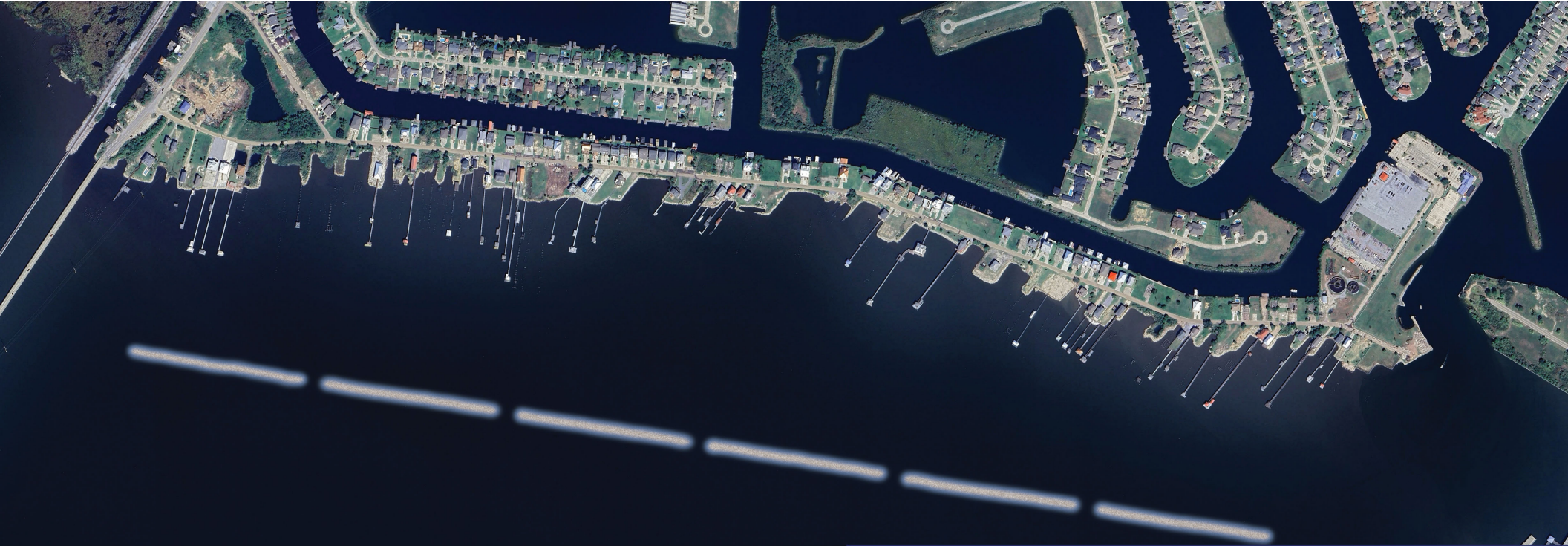
## Northshore Living Shorelines

- Construct 505 linear ft. of living shoreline along Goose Point
- Cost: \$4.3 million
  - Parish/GOMESA: \$3.3 million
  - CPRA: \$1 million
- Permit Phase; Construction mid-2026



**Mike Cooper**  
*Parish President*





## Slidell Breakwater Restoration

- West of the I-10 Twin Span Bridge to Hwy. 11 at Eden Isles
- 1.5-mile rock breakwater
- Cost: \$8 million (Parish/GOMESA)
- Permit Phase; Construction Spring 2027



**Mike Cooper**  
*Parish President*



## Materials of Opportunity

- Repurpose various materials for coastal projects, which would otherwise be discarded
- Budget: \$7 million (RESTORE Act)
- Awaiting US Treasury approval



**Mike Cooper**  
*Parish President*



## Mandeville Lakefront Wetlands

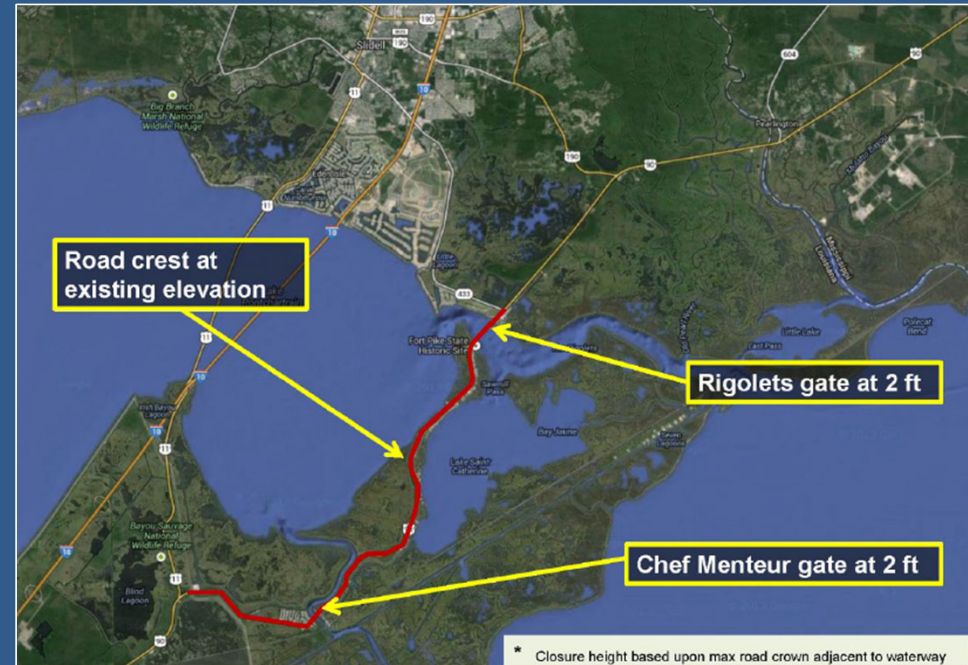
- Reduce wave energy that was damaging the cypress swamp east of Sunset Point
- 4.75 acres dredged from nearby canal
- Cost: \$3.2 million
  - City of Mandeville: \$2.2 million
  - Parish & CPRA: \$1 million
- Complete



**Mike Cooper**  
*Parish President*

# Lake Pontchartrain Barrier Plan

- Limit storm surge from entering Lake Pontchartrain at the Rigolets & Chef Menteur
- President Cooper reinitiated project in 2022
- Current Funding:
  - \$550k (Parish/GOMESA), \$500k (CPRA), \$500k (US Congress)
- Project was first proposed as a lock system in the 60's/70's by USACE.
  - CPRA estimated cost: \$2.4 billion
- Current Status: Modeling Phase

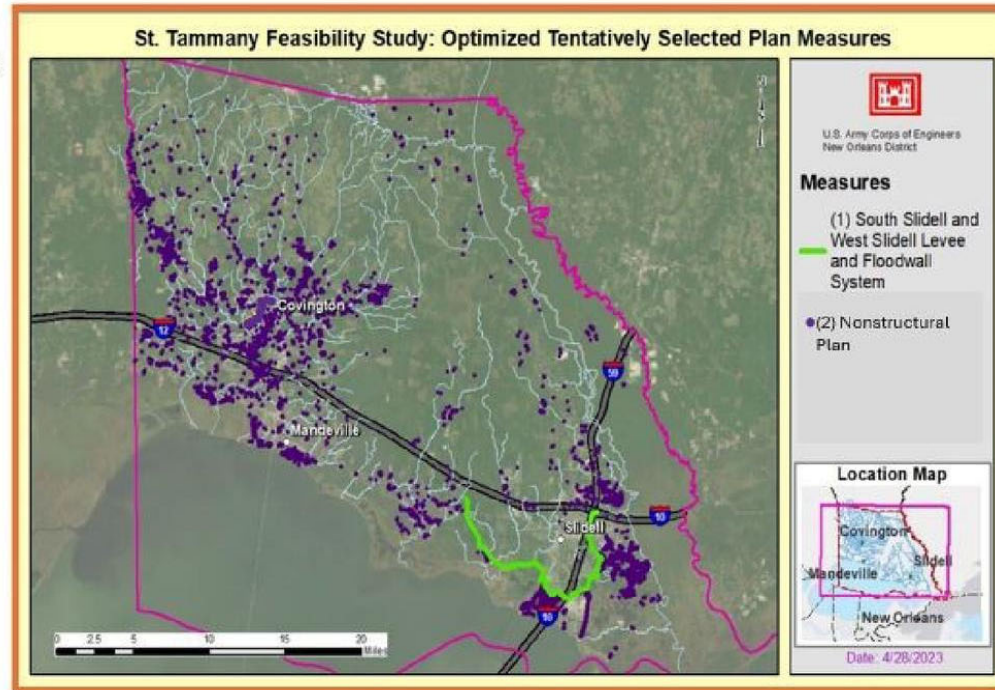


Mike Cooper  
Parish President

# St. Tammany Flood Risk Management Project

- **Structural Features**

- **Estimated Cost: \$3B**
- **15 miles of earthen levee**
- **3.5-mile-long floodwall system from West to South Slidell**
  - **8 pump stations**
  - **13 sluice/lift gates**
  - **18 vehicular gates**
  - **1 pedestrian floodgate**
  - **1 railroad gate**
  - **6 road ramps**
  - **Raising of the I-10 road surface**



- **Nonstructural Features**

- **Estimated Cost: \$2.9B**
- **Total number of structures: 6,410**
  - **Structure elevations of approximately 5,583 eligible residences**
  - **Dry floodproofing of 827 eligible nonresidential structures**

**WRDA 2024 authorizes construction for structural and nonstructural features of this project for a total estimated cost of \$5.9B.**



*Thank  
You*



**Mike Cooper**  
*Parish President*