

Draft Fiscal Year 2027 Annual Plan

INTEGRATED ECOSYSTEM RESTORATION AND
HURRICANE PROTECTION IN COASTAL LOUISIANA

MICHAEL HARE, EXECUTIVE DIRECTOR

BRIAN LEZINA, CHIEF OF PLANNING

JOE WYBLE, PROJECT MANAGEMENT ADMINISTRATOR



Public Comments

EMAIL

Public comments will be accepted via email to:

coastal@la.gov

ONLINE

Comment portal available online AP27.COASTAL.LA.GOV

MAIL

Written comments will be accepted via mail to:

Annual Plan Comment
150 Terrace Avenue
Baton Rouge, LA 70802

IN-PERSON:

Attend a public meeting to submit comments.

CPRA must receive all comments by February 17, 2026.

Timeline

01 / Draft Annual Plan Presented to CPRA Board: December 10, 2025

02 / Public Comment Period Ends: February 17, 2026

03 / Final Annual Plan Presented to CPRA Board: March 18, 2026

04 / Final Annual Plan Submitted to Legislature: March 19, 2026



CPRA ANNUAL PLAN PUBLIC HEARINGS:

Jan 6: Thibodaux

Jan. 8: Jefferson

Jan. 12: Abbeville

Jan. 15: Virtual Webinar (1:00pm - 2:00pm)

5:30 pm

For full details, visit:

coastal.la.gov/calendar/

PROGRAM	REVENUE / EXPENDITURES PROJECTIONS
GOMESA	\$373 Million
NRDA	\$184 Million
NFWF	\$3.7 Million
RESTORE	\$164 Million
CWPPRA (FEDERAL)	\$142 Million
SURPLUS/CAP OUTLAY	\$222 Million
STATE (NON-SURPLUS)	\$60 Million
OTHER	\$120 Million

Projected Revenues & Expenditures FY 2027

BY FUNDING PROGRAM

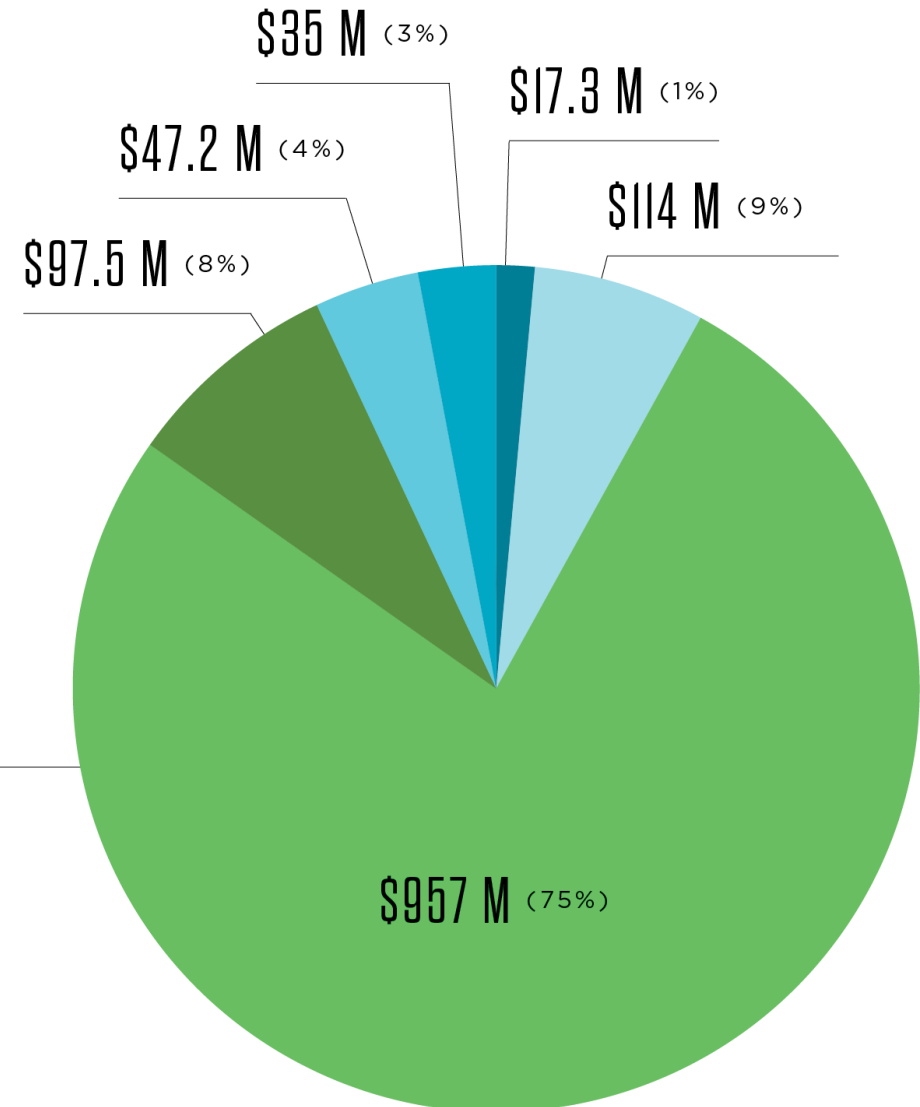
Total Projected Expenditures FY 2027

BY PROJECT PHASE

- PLANNING
- OPERATION, MAINTENANCE & MONITORING
- ENGINEERING & DESIGN
- ONGOING PROGRAMS & INITIATIVES
- CONSTRUCTION
- OPERATING COSTS

FY 2027 TOTAL EXPENDITURES

\$1.27 BILLION



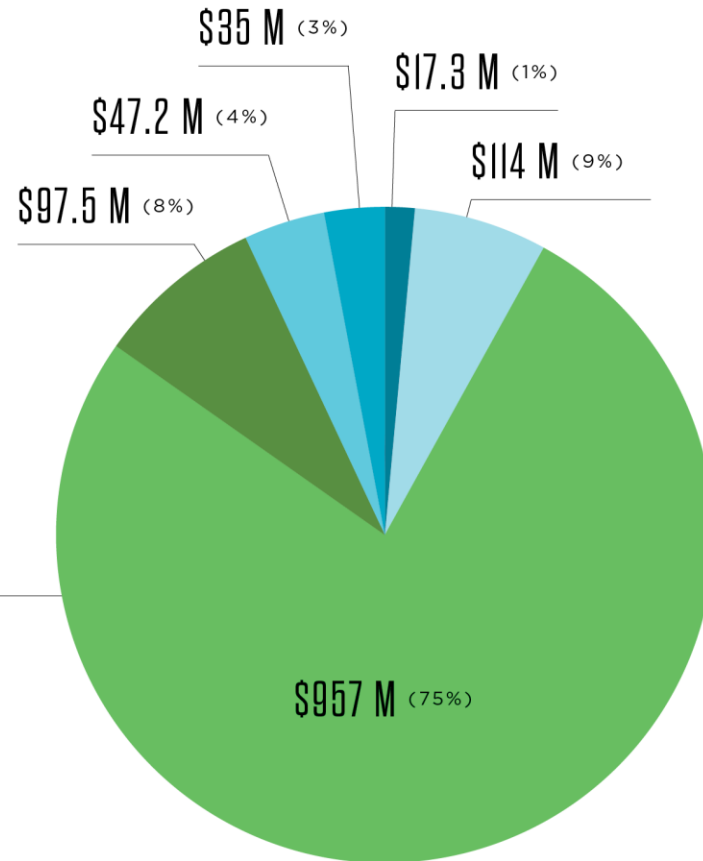
Total Projected Expenditures

BY PROJECT PHASE

- PLANNING
- ENGINEERING & DESIGN
- CONSTRUCTION
- OPERATION, MAINTENANCE & MONITORING
- ONGOING PROGRAMS & INITIATIVES
- OPERATING COSTS

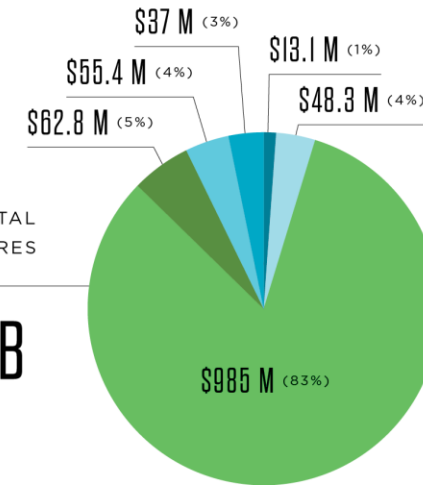
FY 2027 TOTAL EXPENDITURES

\$1.27 BILLION



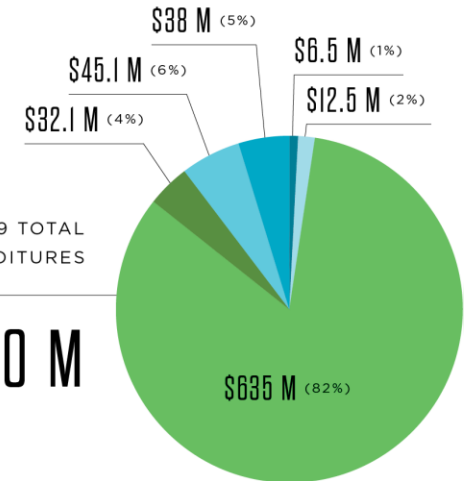
FY 2028 TOTAL EXPENDITURES

\$1.19 B



FY 2029 TOTAL EXPENDITURES

\$770 M



\$1.27 BILLION
INVESTMENT IN OUR COAST

\$957 MILLION ALLOCATED FOR CONSTRUCTION

19 DREDGING PROJECTS

SLATED FOR
CONSTRUCTION
TOTALING

54.5 MILLION CUBIC YARDS
OF SEDIMENT TO CREATE OR NOURISH MORE THAN

12,816 ACRES

130 ACTIVE
PROJECTS

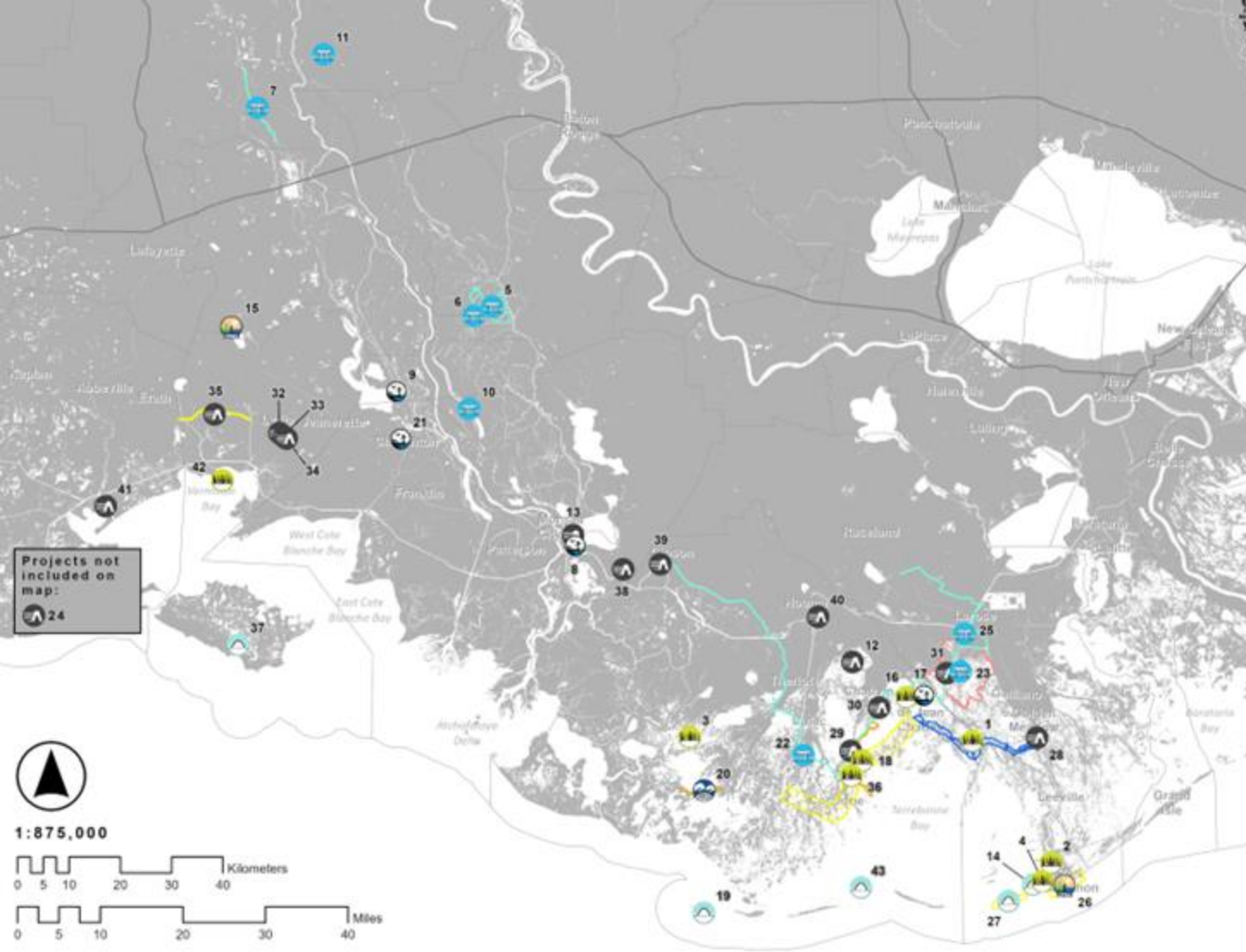
93% PROJECT ASSOCIATED EXPENDITURES



Southwest Coastal Non-Structural



White Lake Restoration



PROJECTS IN CONSTRUCTION:

- 2 West Fourchon Marsh Creation
- 3 Bay Raccourci Marsh Creation & Ridge Restoration
- 4 Port Fourchon Marsh Creation
- 5 Grimmert Canal
- 12 **Morganza to the Gulf**
- 13 St. Mary Back Lakeside Flood Protection
- 14 West Belle Headland Repairs
- 20 Bayou Dularge Ridge & Marsh Creation
- 21 Chitimacha Boat Launch
- 22 **Houma Navigation Canal Lock Complex**
- 25 Grand Bayou Pump Station
- 28 Section A West Levee Improvements
- 29 Reach H3/H2
- 30 MTG Upper Reach 1
- 32 Little Valley Bayou Flood Protection Project
- 33 Rutten Rill Road Flood Protection Project
- 34 Stumpy Bayou Flood Protection Project

South Central Region

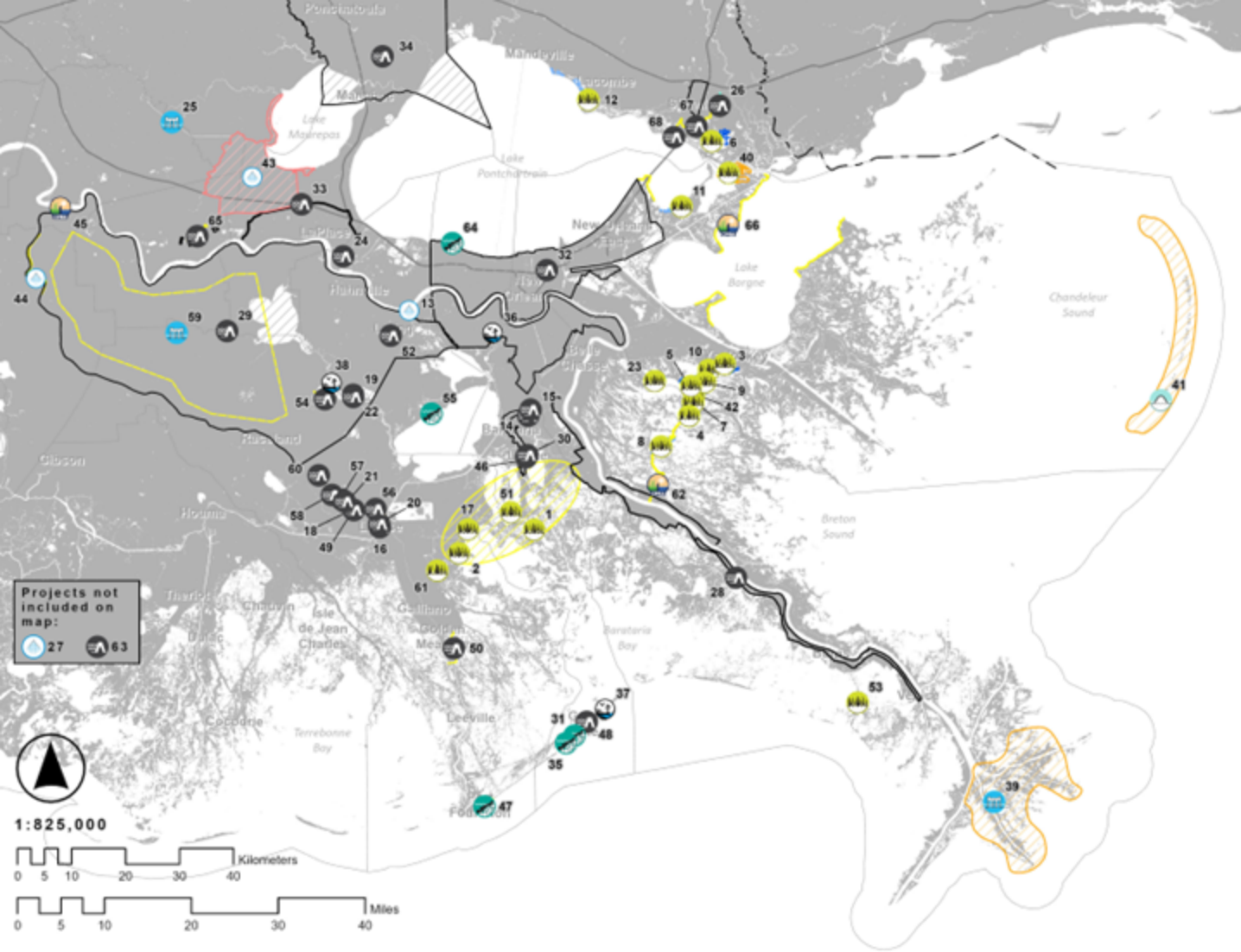
43 ACTIVE PROJECTS: 17 IN CONSTRUCTION, 24 IN E&D, 2 IN PLANNING



Morganza to the Gulf Levee Improvements



Houma Navigational Canal Lock Complex

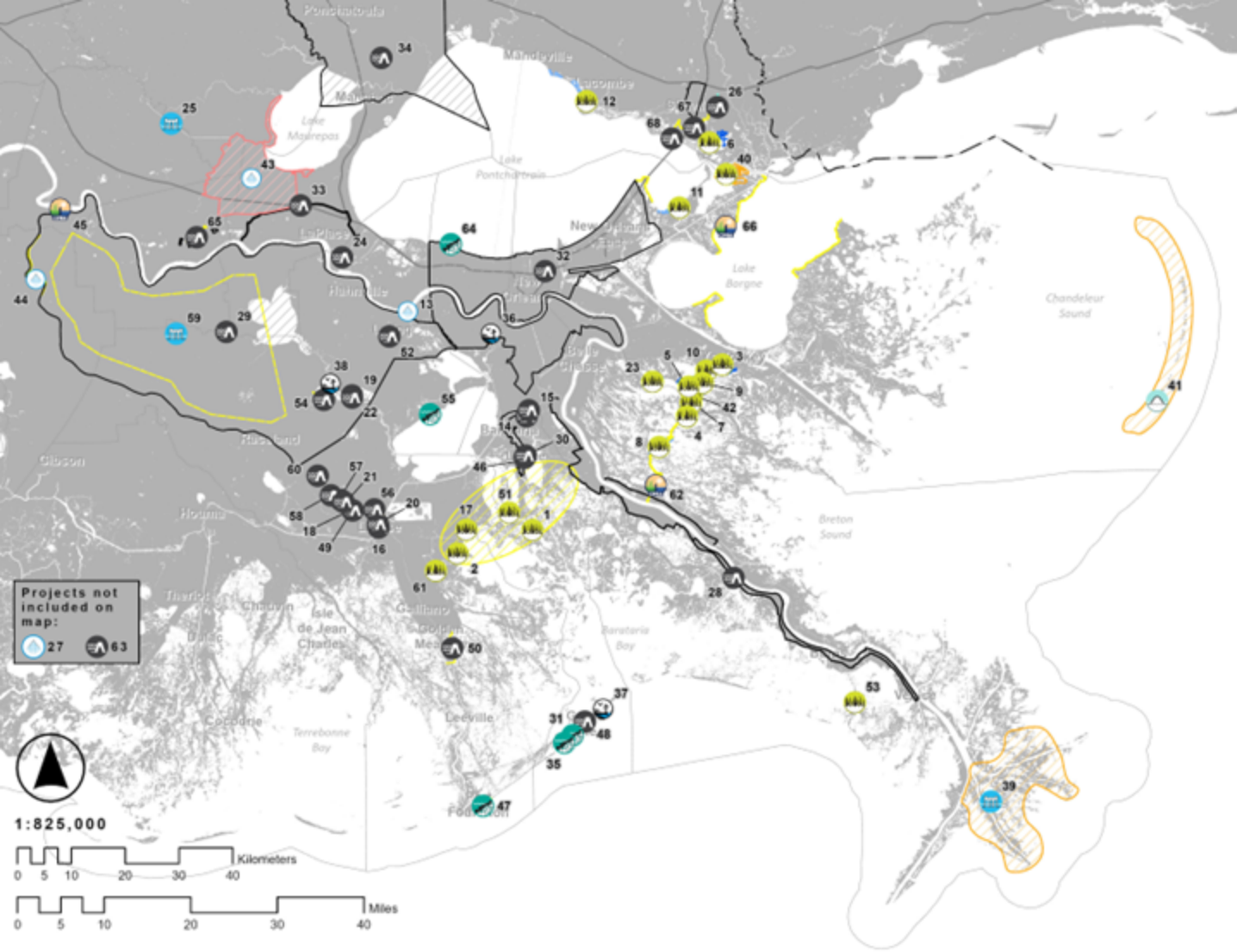


PROJECTS IN CONSTRUCTION :

- 7 East Delacroix Marsh Creation & Terracing
- 8 Breton Landbridge Marsh Creation (West)
- 10 Reggio Marsh Creation & Hydrologic Restoration
- 12 St. Catherine Island Marsh Creation & Shoreline Protection
- 12 Bayou Cane Marsh Creation
- 14 Rosethorne Tidal Protection
- 15 Crown Point Tidal Protection
- 16 Ted Gisclair Lock Structure
- 17 Northwest Little Lake Marsh Creation Increment 2
- 18 MTG Levee Improvements - NLLD
- 19 St. Charles Parish Crawford Canal/Sunset Pump Station
- 20 Industrial Park Avenue Improvements
- 21 UBRR Reach G/Reach H, Haul Road
- 22 Sunset Pump Station Upgrade – Frontal Protection
- 23 Lake Lery Marsh & Rim Restoration
- 24 Montz Pump Station
- 28 New Orleans to Venice
- 31 Grand Isle Shoreline
- 32 SELA Overall
- 33 West Shore-Lake Pontchartrain, Louisiana Hurricane Protection
- 35 Grand Isle Breakwaters
- 36 Bayou Segnette State Park Improvements
- 37 Grand Isle State Park Improvements

Southeast Region

77 ACTIVE PROJECTS: 38 IN CONSTRUCTION, 29 IN E&D, 4 IN PLANNING

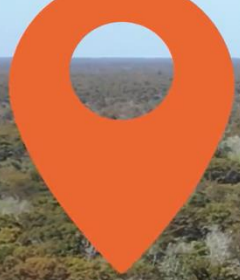


PROJECTS IN CONSTRUCTION :

- 38 Des Allemands Boat Launch
- 41 Chandeleur Island Restoration Project
- 42 Lake Lery Marsh Creation (Phase 2)
- 43 River Reintroduction into Maurepas Swamp
- 44 Mississippi River Reintroduction into Bayou Lafourche (BLFWD)
- 46 Goose Bayou Tidal Protection
- 47 Port Fourchon Shoreline Protection
- 48 Grand Isle Back Levee
- 49 MTG Eastern Tie-in Levee Improvements
- 50 Section A East Increment Improvement
- 54 Bayou Des Allemands Floodgate
- 56 Reach 1 Lockport to Larose (NLLD)
- 63 St. Bernard Pump Stations Phase 2
- 64 Jefferson Parish Lakeside Shoreline Protection

Southeast Region

77 ACTIVE PROJECTS: 38 IN CONSTRUCTION, 29 IN E&D, 4 IN PLANNING



**RIVER REINTRODUCTION INTO
MAUREPAS SWAMP**
ASCENSION, ST. JAMES,
AND ST. JOHN PA



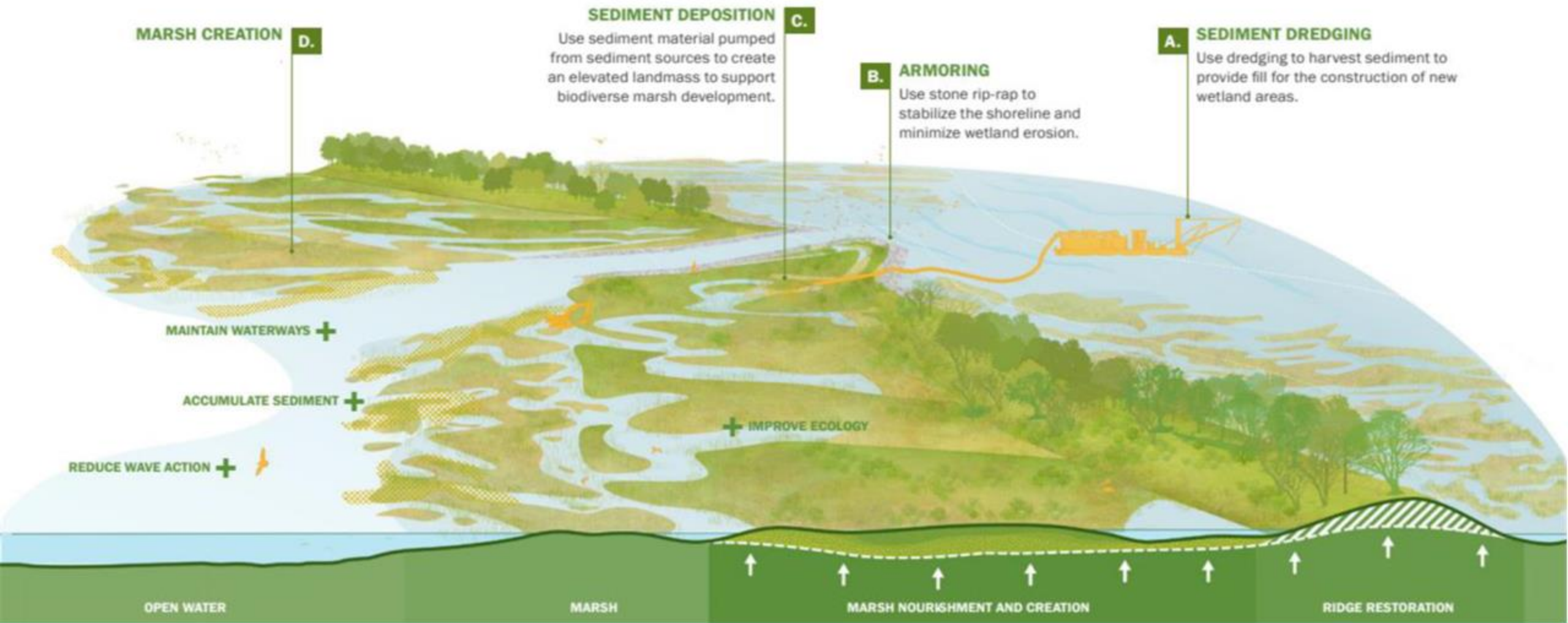
River Reintroduction into Maurepas Swamp



Mississippi River Gulf Outlet Restoration



Grand Isle Restoration & Resiliency Efforts



Landbridge Restoration Projects

Active in Barataria, Breton, and Terrebonne

Atchafalaya Basin

ANNUAL PLAN - APPENDIX D



FY27 PROJECTS:

WATER QUALITY/WATER MANAGEMENT

Grimmett Canal Improvements

Dredging in Big Bayou Pigeon

Pointe Coupee Water Flow Improvements

Murphy Lake Depth Restoration

East Grand Lake Upper Region

RECREATION/ACCESS, OTHER

Bayou Pigeon Boat Launch Improvements

Sandy Cove Boat Launch

Cajun Coast Welcome Center Trail

Atchafalaya Basin Master Plan

Public Outreach

PUBLIC MEETINGS - 5:30PM

JANUARY 6: THIBODAUX

- The Coastal Center at Nicholls University

JANUARY 8: JEFFERSON

- Joseph S. Yenni Building – Second Floor Council Chambers

JANUARY 12: ABBEVILLE

- LSU AgCenter

VIRTUAL 1/15

- 1pm – 2pm



View the FY 2027 Annual Plan & Interactive Map



[AP27.COASTAL.LA.GOV](https://ap27.coastal.la.gov)

