

FY 2025 Parish Matching Program Update and Award Announcements

BRANDON CHAMPAGNE, JOSEPH JOHNSTON CPRA

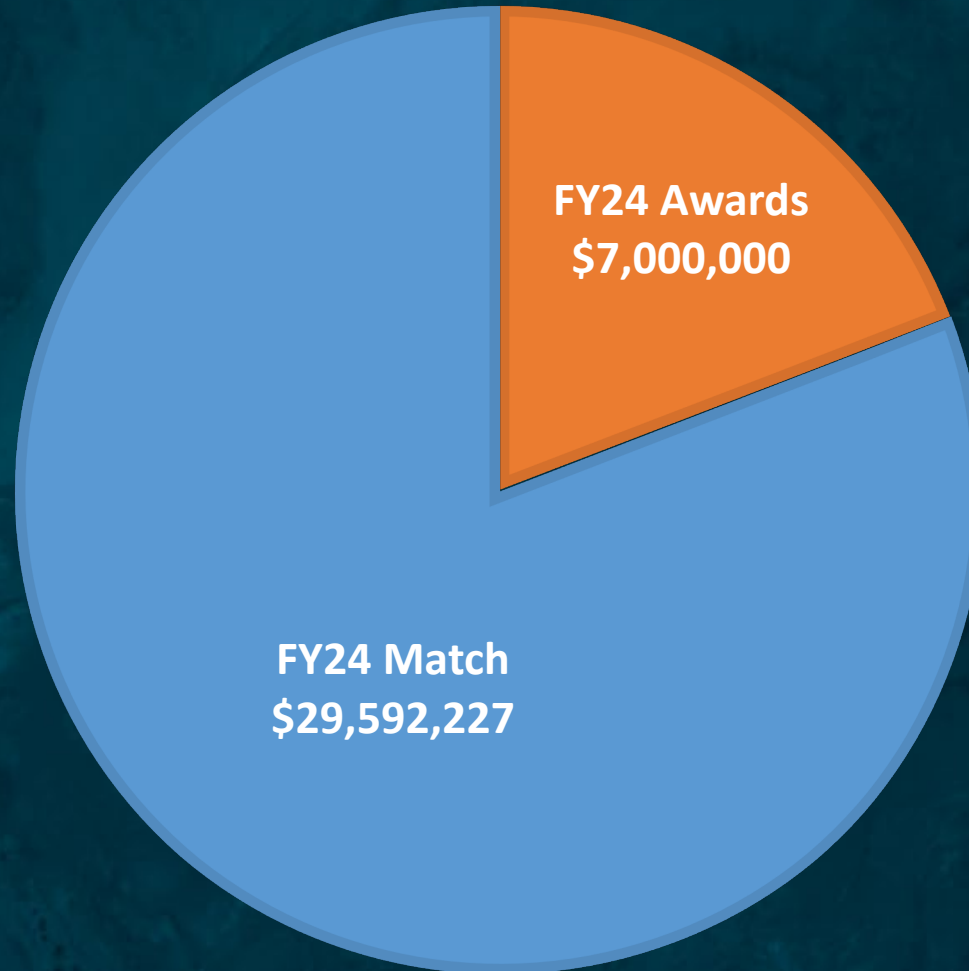


Introduction

- **Purpose:** Support the implementation of projects that align with the goals and objectives of the Master Plan and facilitate collaboration with Parishes
- Directly supports Parish-led projects and leverages multiple sources of funding (Federal, Local, Private)
- FY2025 awards will reimburse **\$6 million** of restoration or resilience work with GOMESA funds



Matching Funds*



*based on FY2024 awards

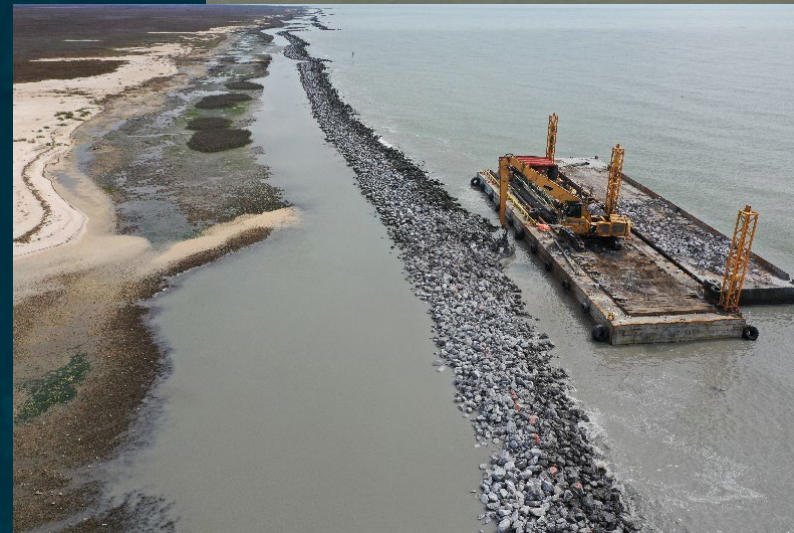


Recent Success

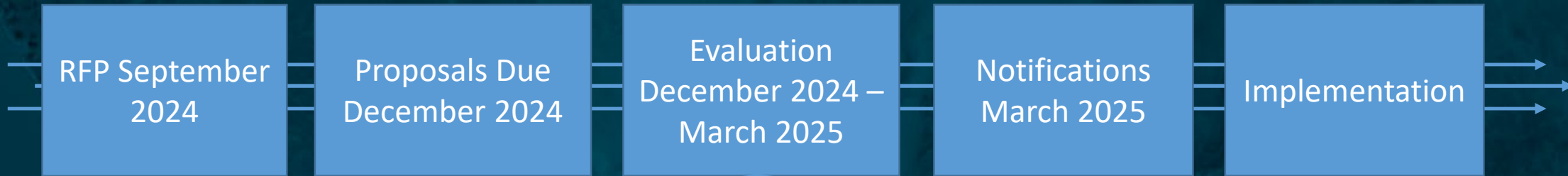
North Vermilion Bay Shoreline Protection



Rockefeller Shoreline Protection



FY25 Parish Matching Program Timeline-



- Proposals were evaluated with these considerations:
 - Consistent with the goals and objectives of 2023 Master Plan
 - Amount, type, and certainty of matching funds
 - Project feasibility and constructability
 - Acreage restored and/or area benefitted
 - Amount of resilience improvements
 - Synergy with other restoration and/or resilience efforts

COASTAL PROTECTION AND RESTORATION AUTHORITY

FY 2025 Awards

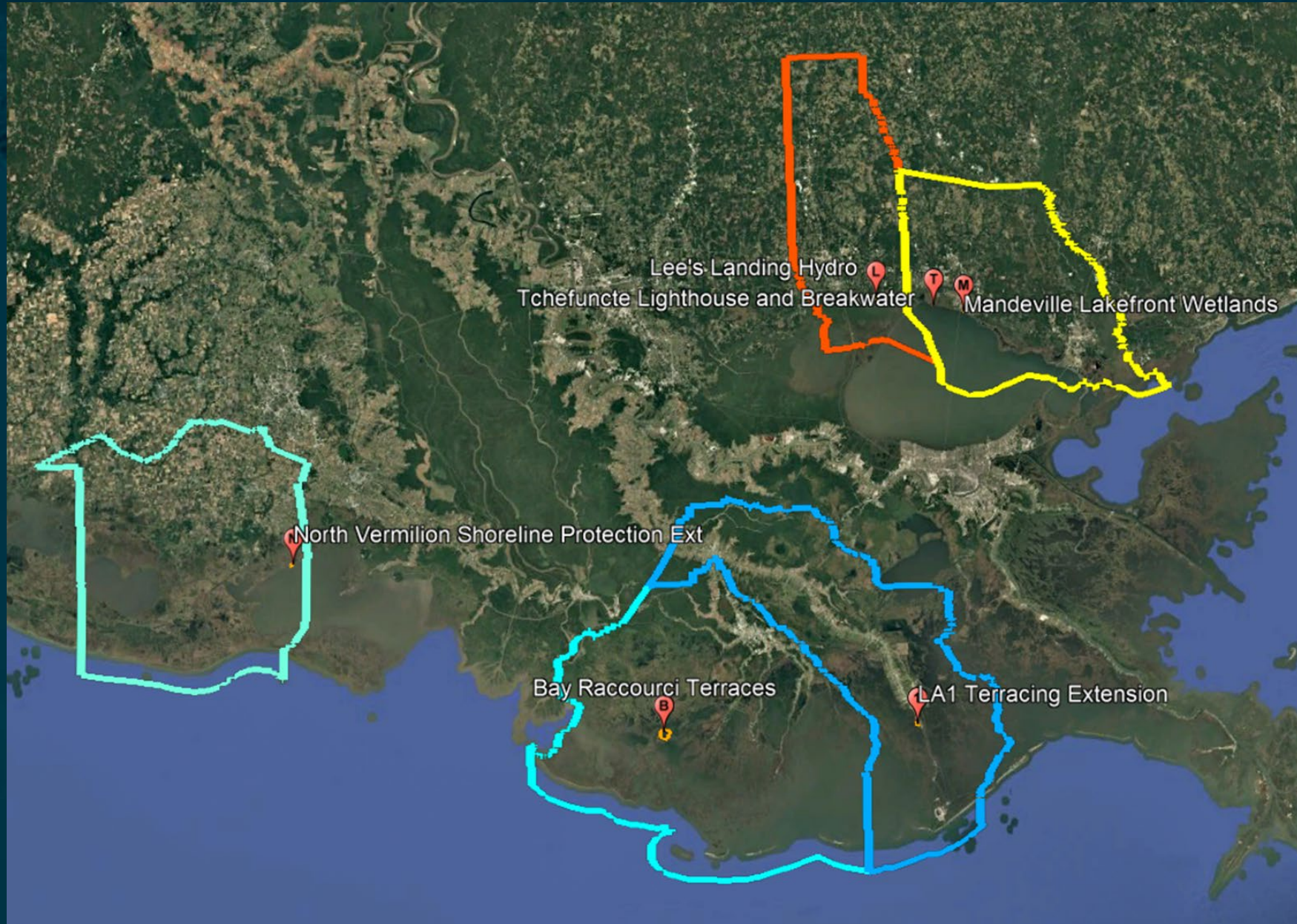


COASTAL PROTECTION AND RESTORATION AUTHORITY

| Parish | Project | Award |
|-------------|---|--------------------|
| Vermilion | North Vermilion Bay Shoreline Protection Project Phase II | \$1,265,000 |
| Tangipahoa | Lee's Landing Powerline Canal Hydrologic Restoration | \$850,000 |
| St. Tammany | Tchefuncte Habitat Restoration | \$1,000,000 |
| St. Tammany | Mandeville Lakefront Wetlands Project | \$1,000,000 |
| Lafourche | Highway 1 Terracing Extension | \$1,110,000 |
| Terrebonne | Raccourci Bay Terraces Phase II | \$775,000 |
| | AWARDS TOTAL | \$6,000,000 |



COASTAL PROTECTION AND RESTORATION AUTHORITY



Lee's Landing Hydro
Tchefuncte Lighthouse and Breakwater
Mandeville Lakefront Wetlands

North Vermilion Shoreline Protection Ext

Bay Raccourci Terraces
LA1 Terracing Extension

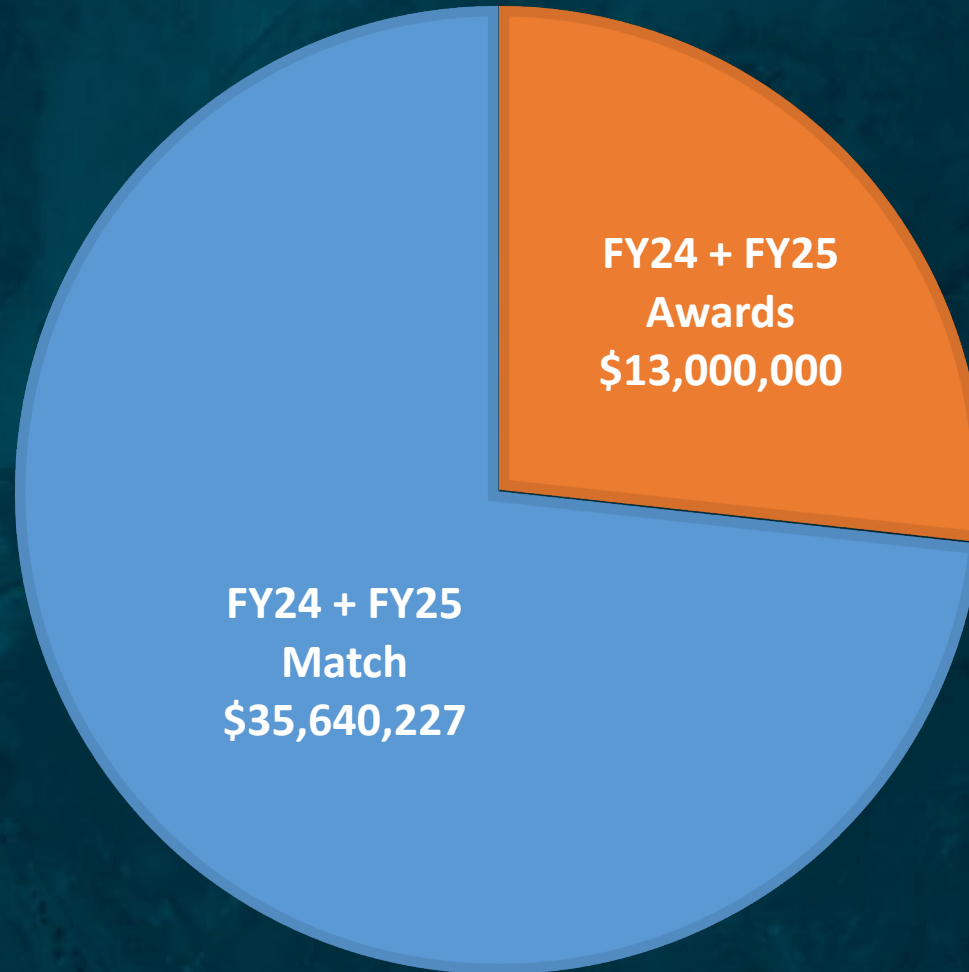




Project Highlights

- Over 1 mile of shoreline protected with rock breakwaters
- Over 40,000 LF of terraces enhancing 475 acres of marsh
- Storm resilience for communities, levees, and infrastructure
- Recreational access and cultural protection

Matching Funds*



*based on FY2024 AND FY2025 awards

COASTAL PROTECTION AND RESTORATION AUTHORITY

CONNECT WITH US!



@LouisianaCPRA

