

COASTAL PROTECTION AND RESTORATION AUTHORITY

# CWPPRA

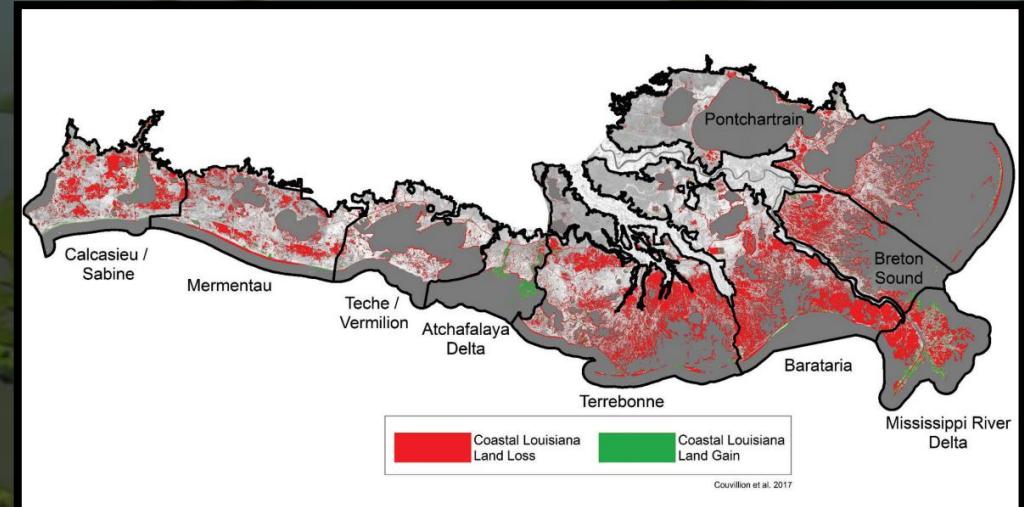
HISTORY AND FUNCTION IN LOUISIANA'S  
COASTAL PROGRAM

FEBRUARY 19, 2025





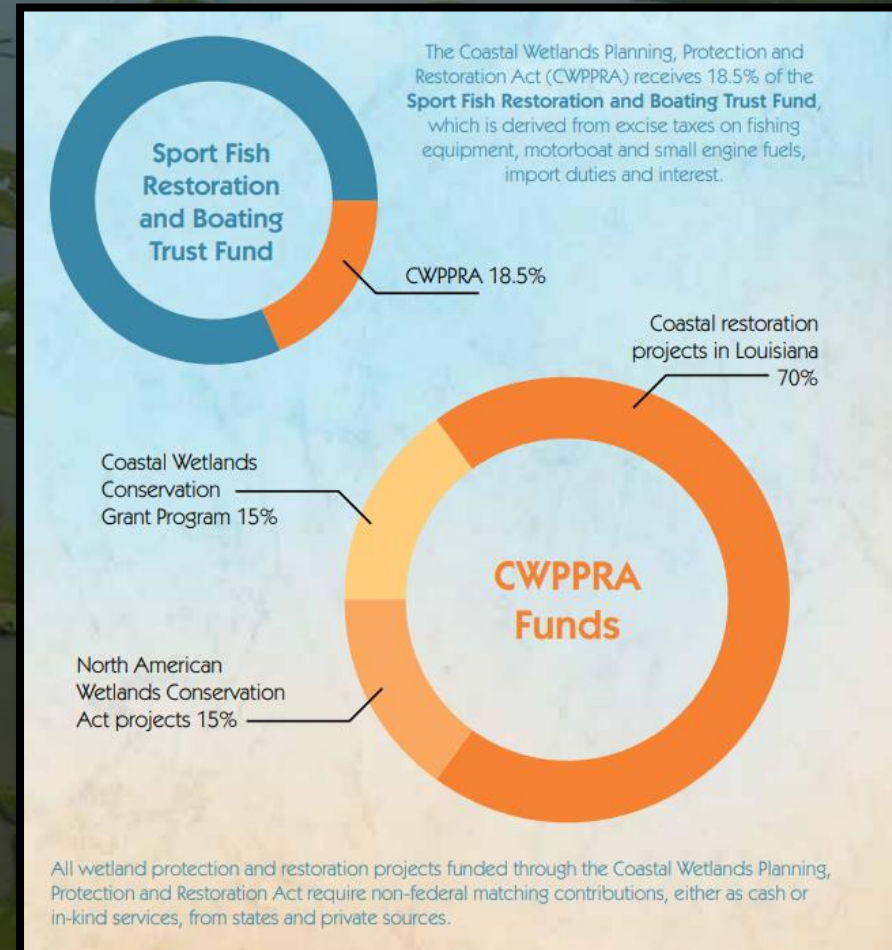
## The Coastal Wetlands Planning, Protection, and Restoration Act



Because the State of Louisiana has a federally approved wetland conservation plan, it pays a 15 percent cost-share. The Federal government pays 85 percent of project costs.

CWPPRA has operated on an annual budget that has ranged from approximately \$30-\$99M per year.

## Sport Fish Restoration & Boating Trust Fund - Revenue



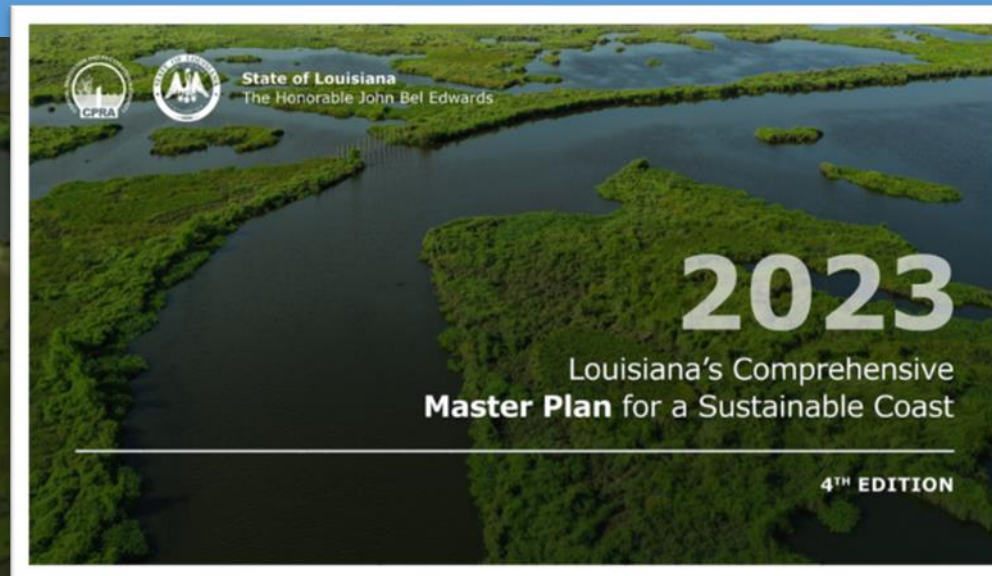




# COASTAL WETLANDS PLANNING, PROTECTION AND RESTORATION ACT

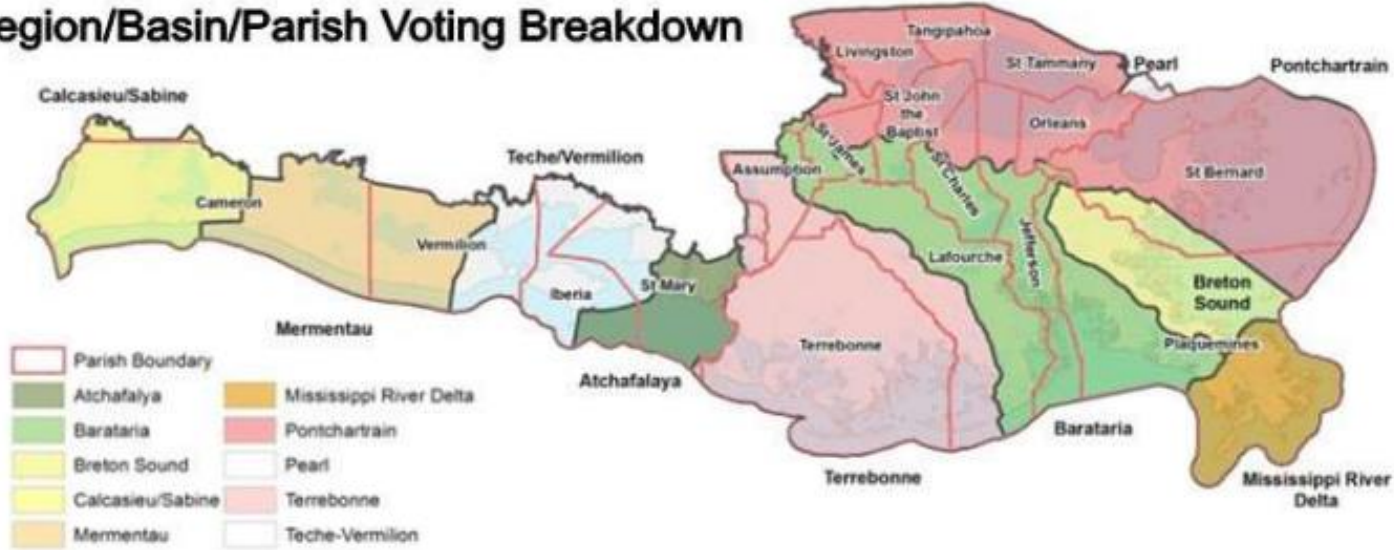
RESTORING COASTAL LOUISIANA SINCE 1990

MANAGING  
AGENCIES :





## Region/Basin/Parish Voting Breakdown



### Region 1

#### Pontchartrain

Ascension  
Jefferson  
Livingston  
Orleans  
Plaquemines  
St. Bernard  
St. Charles  
St. James  
St. John the Baptist  
St. Tammany  
Tangipahoa

### Region II

#### Barataria

Ascension  
Assumption  
Jefferson  
Lafourche  
Orleans  
Plaquemines  
St. Charles  
St. James  
St. John the Baptist

#### Breton Sound

Plaquemines  
St. Bernard

### Region III

#### Teche-Vermilion

Iberia  
St. Mary  
Vermilion

#### Atchafalaya

Iberia  
St. Mary  
Terrebonne

#### Terrebonne

Assumption  
Iberia  
Lafourche  
St. Martin  
St. Mary  
Terrebonne

### Region IV

#### Calcasieu-Sabine

Cameron  
Calcasieu

#### Mermentau

Cameron  
Vermilion

## Phase Zero

- Conceptual Project Development

## Phase One

- Pre-construction data collection
- Engineering & Design

## Phase Two

- Construction
- Project Management
- Construction Supervision and Inspection
- Operations, Maintenance, and Monitoring (OM&M)



# Project Types



*Barrier Island Restoration*



*Terracing and Sediment Trapping*



*Sediment and Freshwater Diversions*



*Shoreline Protection*



*Hydrologic Restoration*



*Ridge Restoration*



*Marsh Creation*



*Vegetative Plantings*



# Sediment Delivery



Patrick M. Quigley  
www.gulfcoastairphoto.com  
Sildell, LA 985.788.3458  
A SDAV owned small business.



# Restoration keystones



Louisiana Coastal Wetlands Conservation and Restoration Task Force

rev. October 2002

Cost figures as of: April 2020



## River Reintroduction into Maurepas Swamp (PO-29) Transferred

### Project Status

**Approved Date:** 2001      **Project Area:** 36,121 acres  
**Approved Funds:** \$6.55 M      **Total Est. Cost:** \$6.55 M  
**Net Benefit After 20 Years:** \*see below  
**Status:** Transferred  
**Project Type:** Water Diversion  
**PPL#:** 11

### Location

The proposed project is located south of Lake Maurepas in the upper Pontchartrain Basin. The waters diverted from the Mississippi River will affect St. John the Baptist, St. James, and Ascension Parishes, Louisiana.

### Problems

Since the construction of the Mississippi River flood control levees, the Maurepas swamp has been virtually cut off from any fresh water, sediment, or nutrient input. Thus, the only soil building has come from organic production within the wetlands. Subsidence in this area is classified as intermediate, but when coupled with minimal soil building, it has produced a net lowering of ground surface elevation. This, in turn, has led to a doubling in flood frequency over the last four decades that leaves the swamps persistently flooded. Without restoration, the factors and processes that are contributing to stress and deterioration of the south Maurepas swamps will continue. The result would be the loss of the swamp, eventually followed by a succession to open water.

### Restoration Strategy

The goal of the south Maurepas diversion project is to restore and protect the health and productivity of the swamps south of Lake Maurepas by reintroducing sediment- and nutrient-laden water from Mississippi River.

The specific objectives of the Maurepas project are to: restore natural swamp hydrology; increase sediment and nutrient loading to the project area; increase substrate accretion; retain and increase existing areas of swamp vegetation, including overstory cover; and reduce salinity levels.

The project's main structural features will include: two 10x10 box culverts capable of diverting 2,000 cubic feet of water per second; a 100x100 foot receiving pond reinforced with a 20-inch layer of riprap; and a 50-foot wide, 10-foot deep outflow channel roughly 27,500 feet long that will run from the river to U.S. Interstate 10.



The Maurepas Swamp in decline.

### Progress to Date

This project was selected for Phase 1 (engineering and design) funding at the August 2001 CWPPRA Task Force meeting.

The project is on Priority Project List 11.

\* The project will enhance an area of swamp (36,121 acres) that would be substantially degraded without the project.

For more information, please contact:



**Federal Sponsor:**  
U.S. Environmental Protection Agency  
Dallas, TX  
(214) 665-6722

**Local Sponsor:**  
Coastal Protection and Restoration Authority  
Baton Rouge, LA  
(225) 342-4736

[www.LaCoast.gov](http://www.LaCoast.gov)





# Restoration Keystones



Louisiana Coastal Wetlands Conservation and Restoration Task Force



## Shell Beach South Marsh Creation (PO-168)



## Lake Borgne Marsh Creation (PO-180)

- \$114.7 Million
- 2,816 Acres
- Largest CPRA Acreage Created

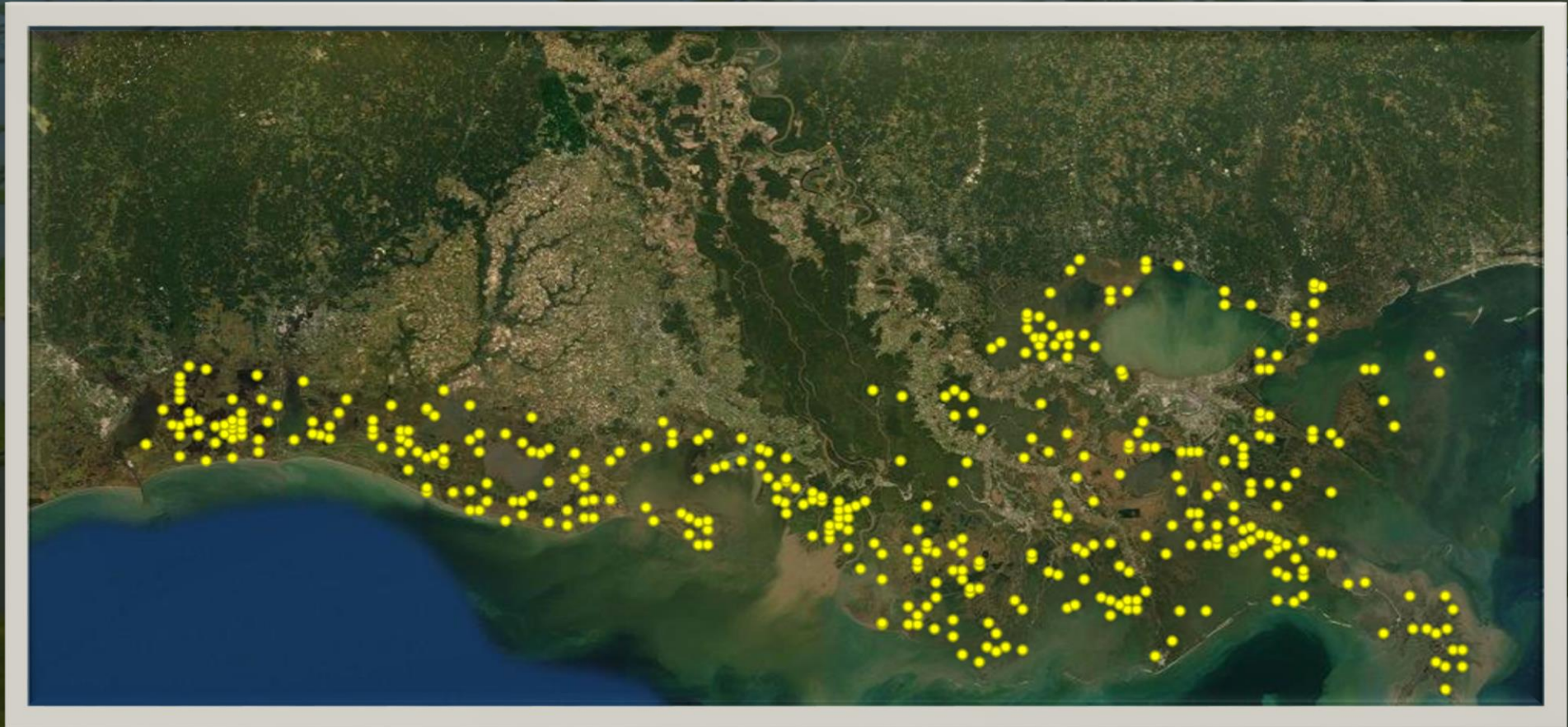




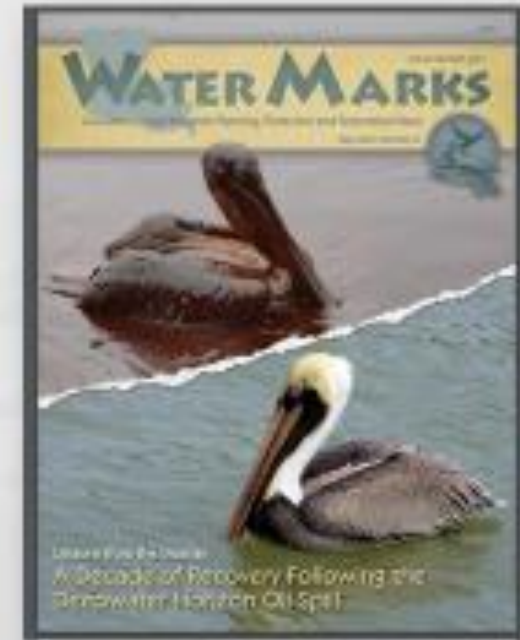
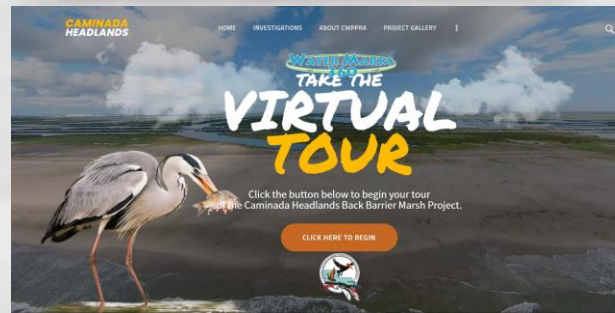




## Monitoring – World's Largest



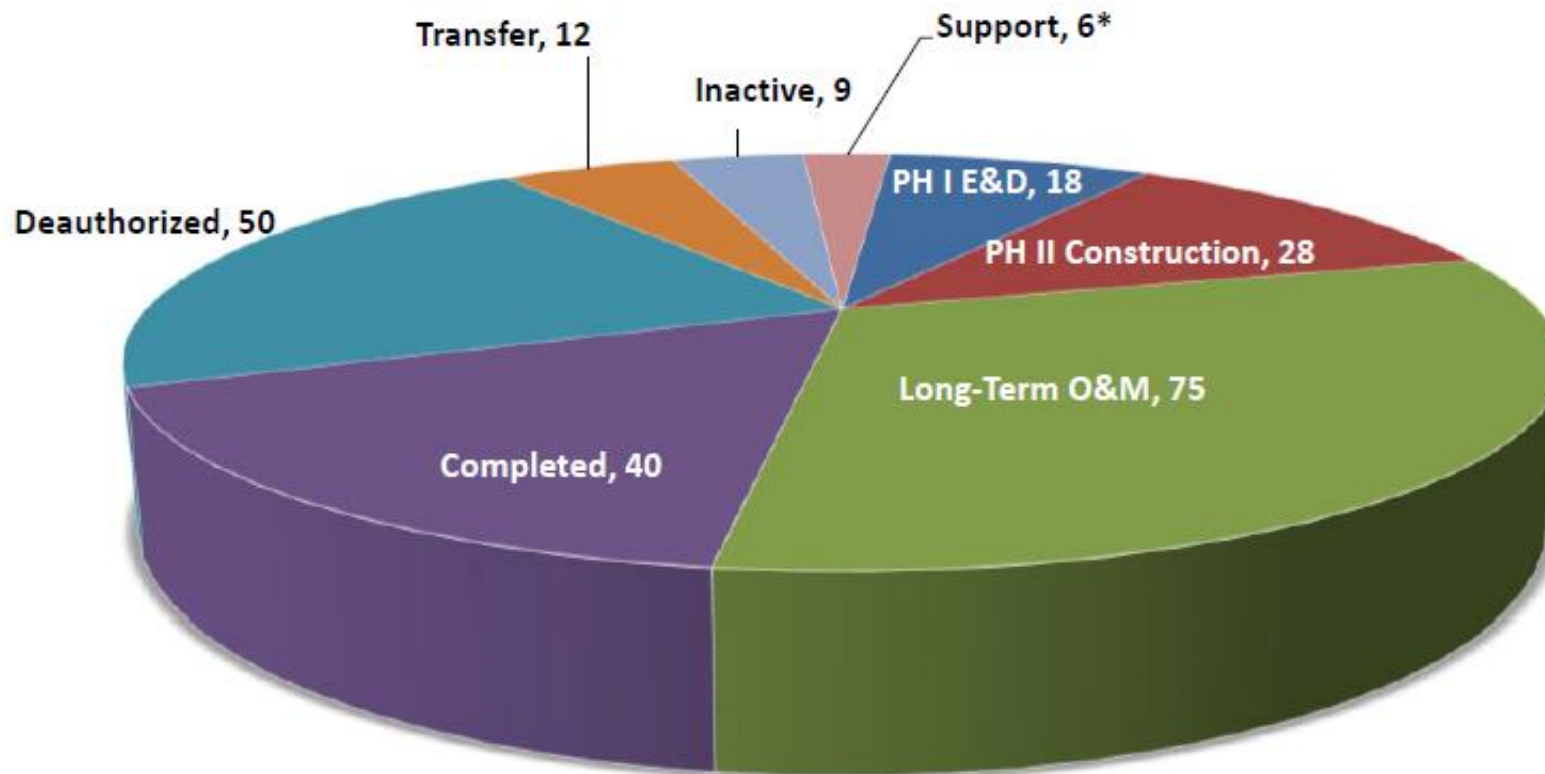






**TOTAL CWPPRA PROJECTS: 238**

**ACTIVE PROJECTS: 127**



\* (1) RMS (2) Monitoring Contingency Fund (3) Storm Recovery Procedures (4) Construction Program Technical Services (5) Wetland Conservation Plan





## CWPPRA Projects Overview Project Metrics



\* CWPPRA- Coastal Wetlands Planning, Protection and Restoration Act

**168 Projects**  
**102,694 Net Acres Benefited**

**\$ 2.4 Billion Funded**  
**\$ 1.4 Billion Expended**

**128 Active Projects**  
**40 Projects Completed**

**19 Projects in Engineering & Design**  
**28 Projects in Construction**  
**115 Projects Constructed**  
**6 Support Projects**



## CWPPRA AUTHORIZED RESTORATION PROJECTS

*Coastal Wetlands Planning, Protection, and Restoration Act*

### Phase I Approvals

- *Joint evaluation and expanded engineering and design of South Isle de Jean Charles Landbridge Increment and Eastern Terrebonne Landbridge Marsh Creation Increment 1*
- *Joint evaluation and expanded engineering and design of Wood Lake Marsh Creation & Terracing and East Lake Lery Shoreline Restoration*
- *Grand Chenier Marsh Creation & Terracing*

### Phase II Approvals

- *Port Fourchon Marsh Creation*
- *North Delacroix Marsh Creation & Terracing*
- *Bay Racourcci Marsh Creation & Ridge Restoration*





## CWPPRA Regional Planning Team (RPT) Meetings



CWPPRA's Regional Planning Team Meetings will be held on February 4th - February 6th, 2025, starting at 9:30 am. The public is welcome to attend in-person or virtually via WebEx.

If you would like to submit a project proposal for consideration, please fill out the RPT project nomination form and send to [Cecilia.Allen@usace.army.mil](mailto:Cecilia.Allen@usace.army.mil) by January 28th, 2025 to secure a spot on the agenda. Proposal presentations must be less than five minutes in length with no more than five slides per project.

Letters of Support for projects presented at RPT Meetings can be submitted by February 14th to Terri von Hoven at [Terri.M.VonHoven@usace.army.mil](mailto:Terri.M.VonHoven@usace.army.mil).

The Coastwide Vote will occur on February 25th.

Region 4	Region 3	Region 1 & 2
Port of Lake Charles 1611 West Sallier Street Lake Charles, LA	Port of Morgan City 7327 Highway 182 Morgan City, LA	Big Branch Marsh NWR, 61389 HWY 434 Lacombe, LA
February 4, 2025, 9:30 am	February 5, 2025, 9:30 am	February 6, 2025, 9:30 am

### Audio Conference Information:

USA Toll-Free: 844-800-2712

Access Code: 2761 432 2324

### WebEx Meeting:

<https://usace1.webex.com/meet/terri.m.vonhoven>

[terri.m.vonhoven](mailto:terri.m.vonhoven)

February  
2025

Regional Planning  
Team Meetings

Late February  
2025

Coastwide Electronic Vote

April and May  
2025

PPL Phase O Candidate  
Selection and Approval

December  
2025

Technical Committee  
PPL Selection

January  
2026

Task Force  
PPL Approval



COASTAL PROTECTION AND RESTORATION AUTHORITY

# COASTAL WETLANDS PLANNING, PROTECTION AND RESTORATION ACT

RESTORING COASTAL LOUISIANA SINCE 1990

MANAGING  
AGENCIES :



[Lacoast.gov](http://Lacoast.gov)

