

Restore

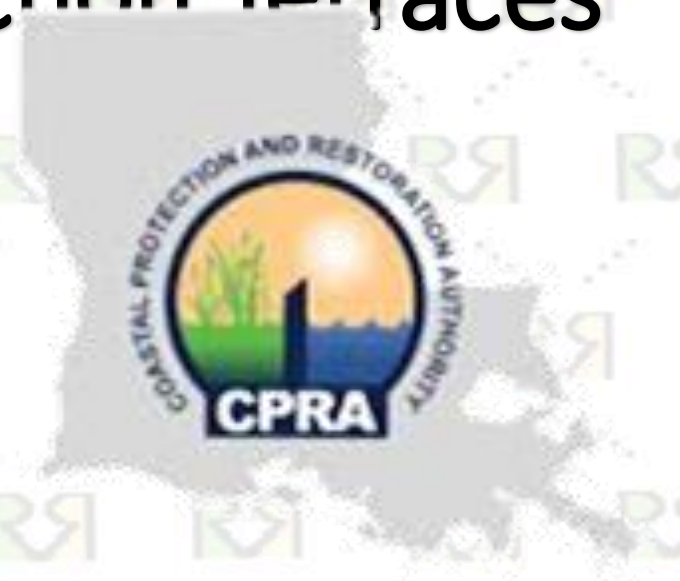


Retreat

Post Project Review
West Grand Terre Planting
&
Ducks Unlimited / Fourchon Terraces

For

Wednesday, February 19, 2025
Baton Rouge, Louisiana



Joseph A. Orgeron, Ph.D. -- Executive Director
Polly Glover -- Project Coordinator

Restore or Retreat -- Overview & Mission

Restore or Retreat (R&R) is a program that helps Louisiana residents and Terrebonne base...
erosion represents a...
With a membership...
expedite the implem...
protect this irreplace...

- Privately funded by Apache Louisiana, Bollinger Foundation, South Central...

....And Coastal...

- **Currently** - Of...
- **April 2025** -- /

Progress Photographs



AERIAL PHOTOS FROM 11/21/2024



**Ratcliff
Construction**

23-018
NEW COASTAL
CENTER FACILITY

**WEEKLY
PROGRESS
REPORT**

11/15/24-11/22/24

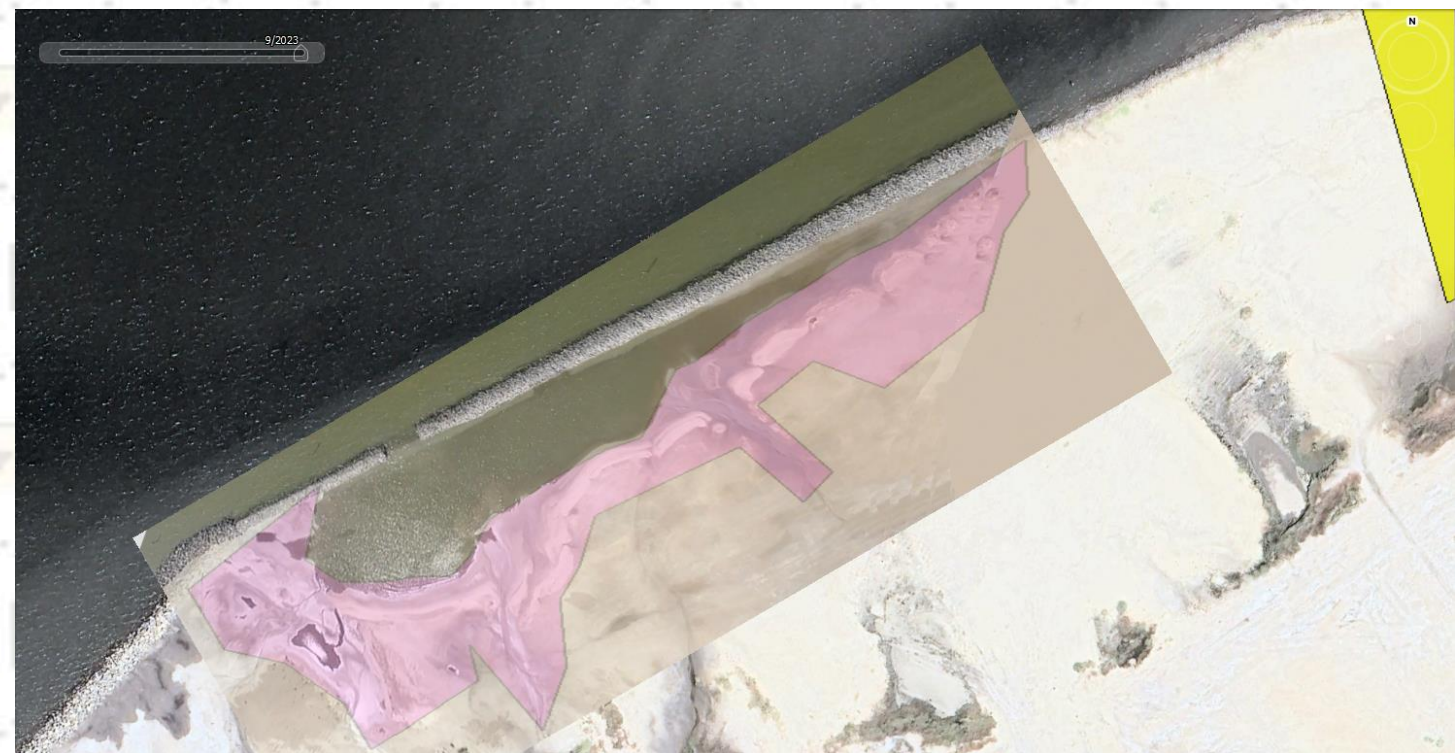
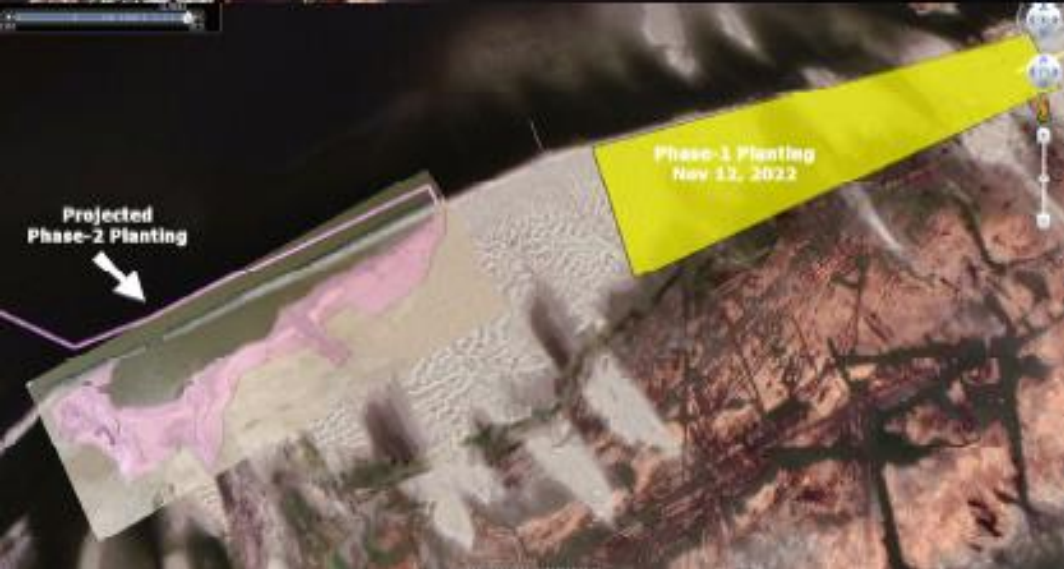
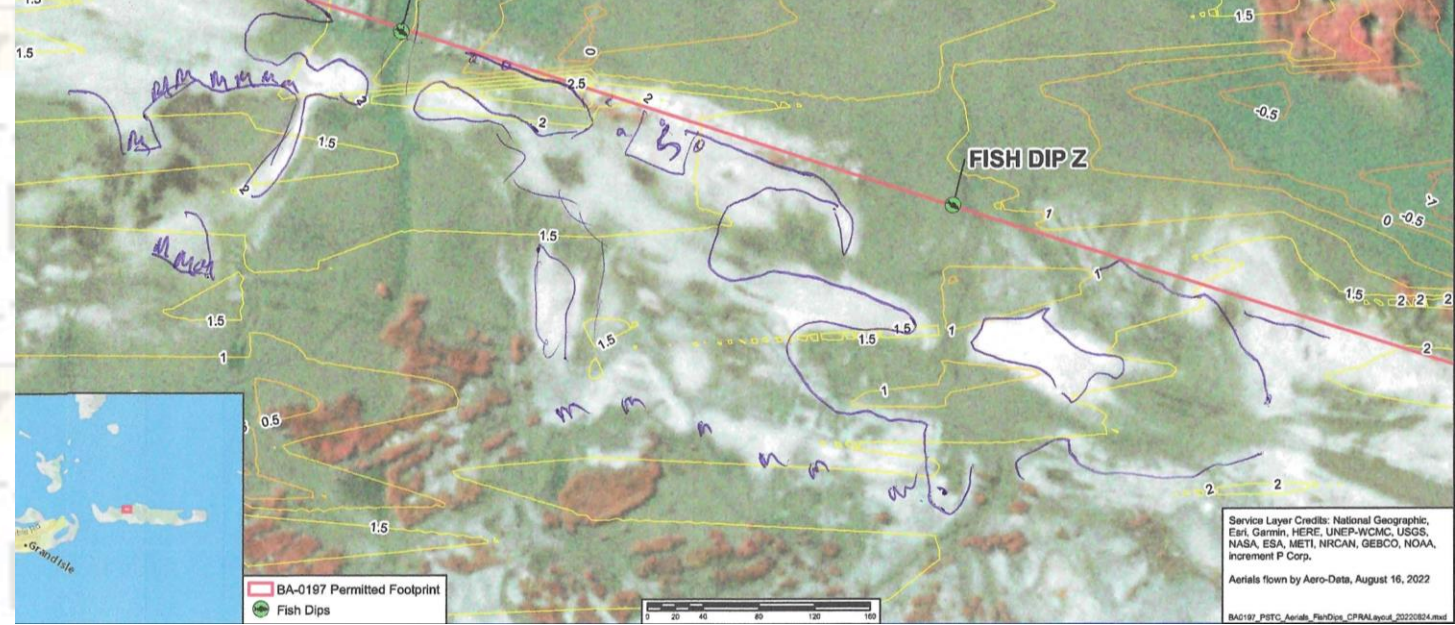


Restore
or
Retreat
LAT: 29.28°
LON: -89.94°

WEST GRAND TERRE MARSH PLANTING OCT 12th, 2024



**Projected
Phase-2 Planting**





- *Engaging 37 volunteers over the course of one day.*
- *Total planting time was just shy of 6 hours.*
- *Working on 3 areas with 3 species to mimic to already existing habitat*



<https://www.youtube.com/embed/3HBLE4gvd-M>





DUCKS UNLIMITED, INC.

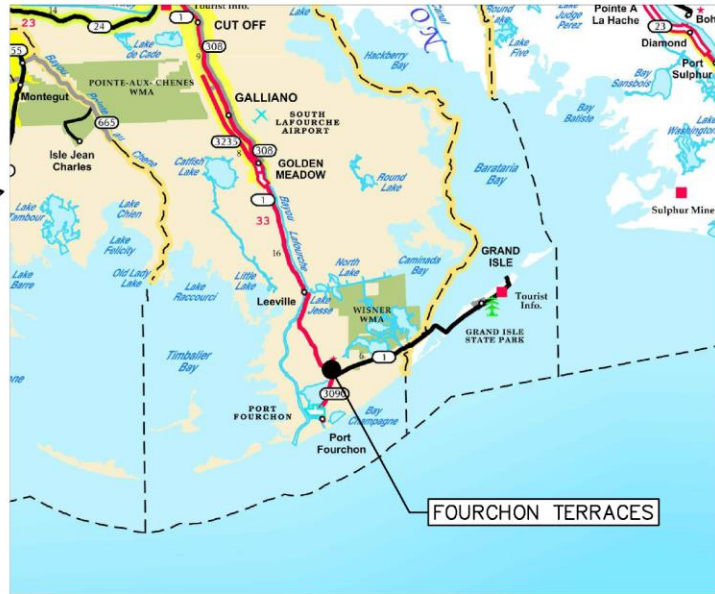
PORT & FOURCHON TERRACES & LIVING SHORELINE

LAFOURCHE PARISH

IN COOPERATION WITH



PROJECT LOCATION

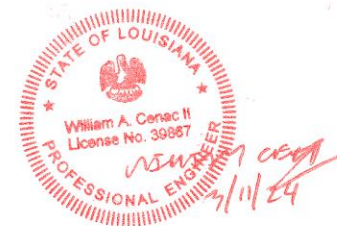


PROJECT VICINITY MAP



SHEET INDEX

- 1 TITLE SHEET
- 2 GENERAL NOTES
- 3 OVERALL VICINITY AND ACCESS MAP
- 4 SOUTHERN AREA PLAN VIEW
- 4A SOUTHERN AREA PLAN VIEW 2**
- 5 NORTHERN AREA PLAN VIEW
- 6 SOUTHERN TYPICAL SECTIONS
- 7 NORTHERN TYPICAL SECTIONS
- 8 LIVING SHORELINE SECTION AND DETAILS
- 9 PLANTING DETAILS
- 10 CONSTRUCTION QUANTITIES
- 11 CONSTRUCTION QUANTITIES 2



CAUTION:

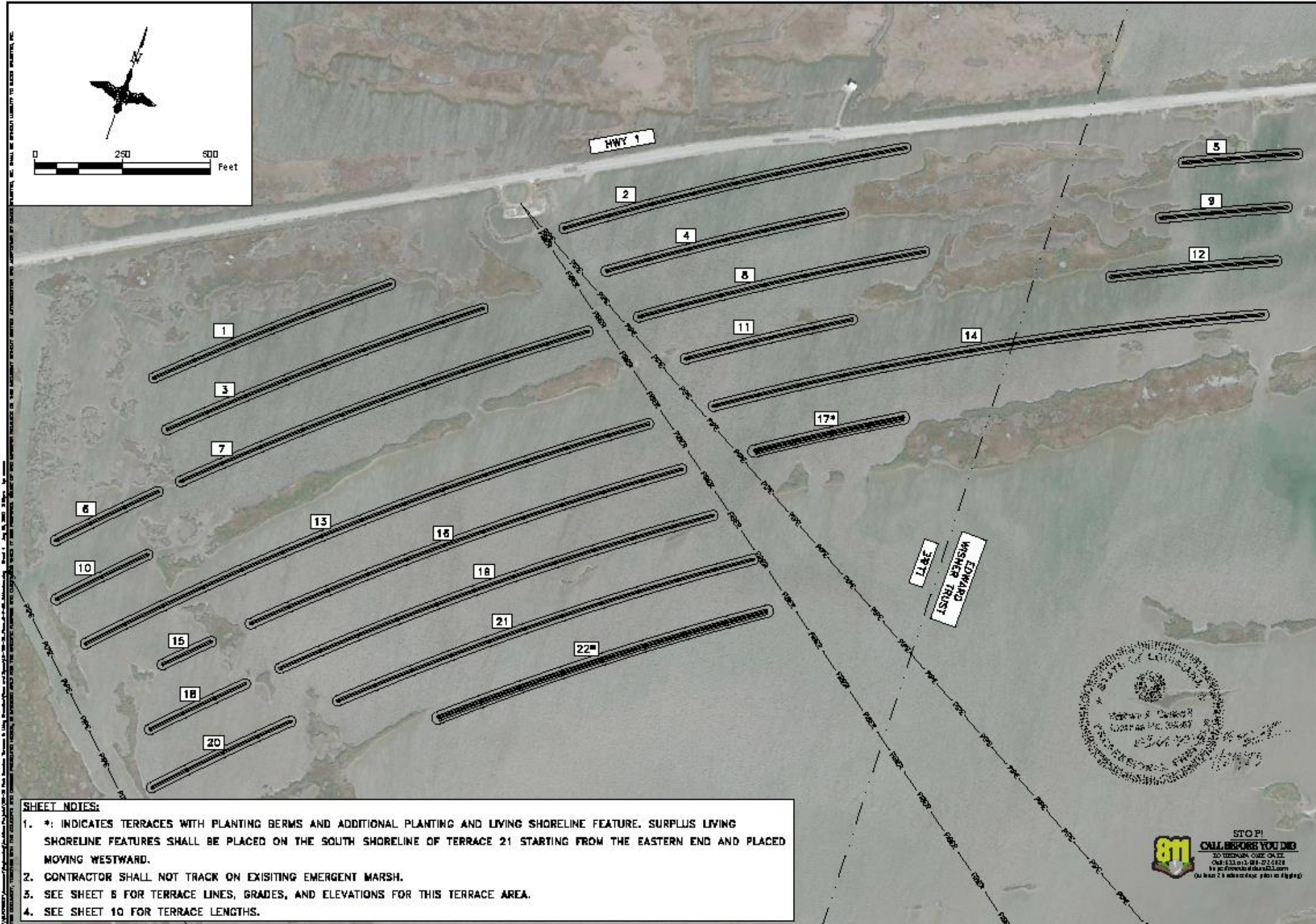
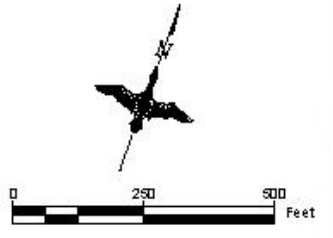
The engineer preparing these plans will not be responsible for, or liable for, unauthorized changes to or uses of these plans. All changes to the plans must be in writing and must be approved by the Engineer of Record.



NO.	REVISIONS	DATE	BY
1	ADDITION #		
2	CHANGE ORDER #		

<p>DUCKS UNLIMITED INC. SOUTHERN REGIONAL OFFICE 193 Business Park Drive, Suite E Cibola, LA 70024 PHONE: 504-245-3915 EXPIRES: 09/30/2024</p>	TITLE SHEET
	PORT FOURCHON TERRACES & LIVING SHORELINE

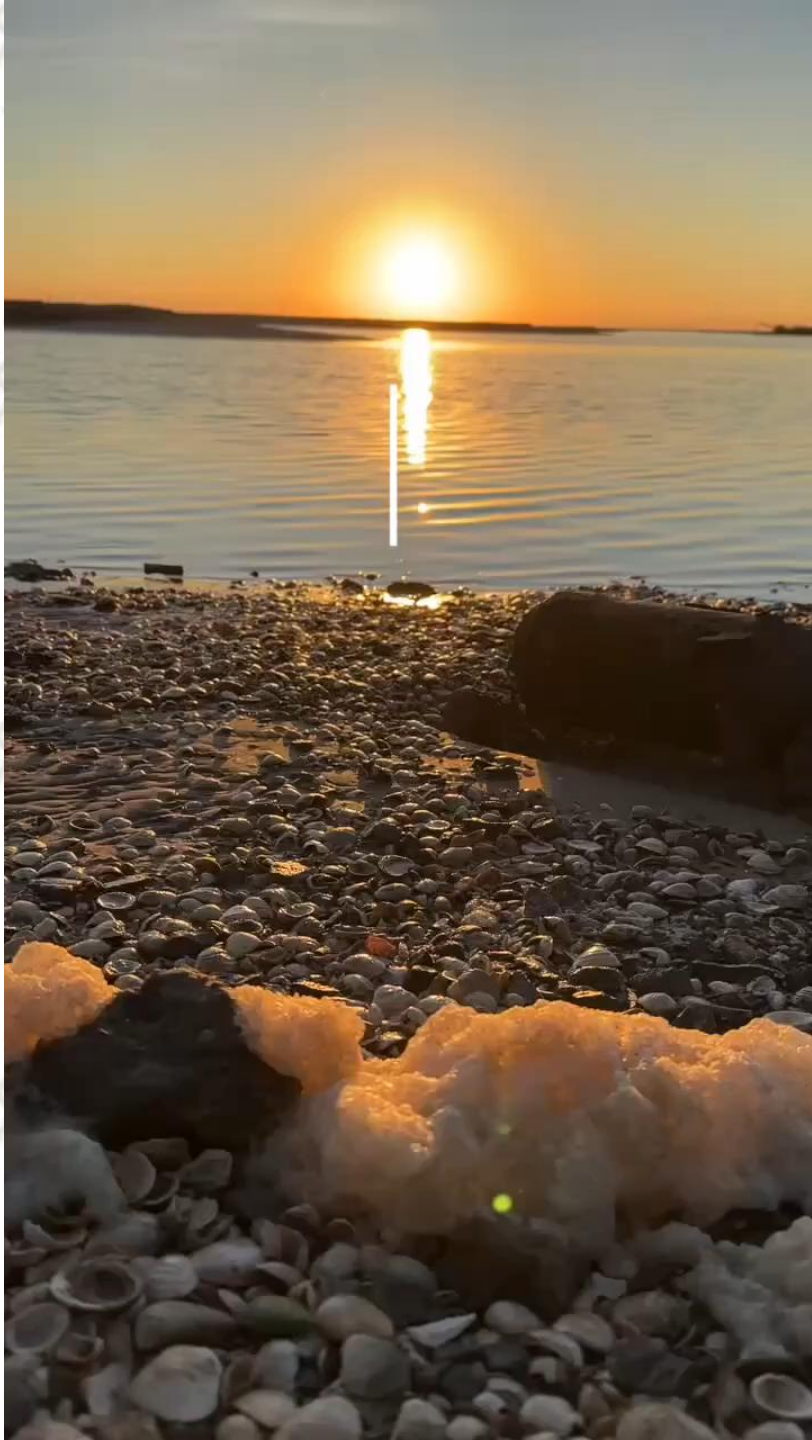
DESIGNED BY: WAC	DATE: 7/23
DRAWN BY: WAC	
SURVEYED BY: DU	
CHECKED BY: BUL	
PROJECT NO.: DU-LA-159-36	
CONTRACT NO.: DU-LA-159-36	
SAMS NO.	
SHEET NUMBER	



SHEET NOTES:

- *: INDICATES TERRACES WITH PLANTING BERMS AND ADDITIONAL PLANTING AND LIVING SHORELINE FEATURE. SURPLUS LIVING SHORELINE FEATURES SHALL BE PLACED ON THE SOUTH SHORELINE OF TERRACE 21 STARTING FROM THE EASTERN END AND PLACED MOVING WESTWARD.
- CONTRACTOR SHALL NOT TRACK ON EXISTING EMERGENT MARSH.
- SEE SHEET 6 FOR TERRACE LINES, GRADES, AND ELEVATIONS FOR THIS TERRACE AREA.
- SEE SHEET 10 FOR TERRACE LENGTHS.

DESIGNED BY: WAC	DATE: 7/23
DRAWN BY: WAC	
SURVEYED BY: DL	
CHECKED BY: BAL	
PROJECT NO. 24-LA-104-36	
CONTRACT NO. 24-LA-104-36	
SAME FIG.	
 STOP! CALL BEFORE YOU DIG <small>SO THERE'S ONE ON IT</small> <small>CALL 811 OR 1-800-4-A-DIG</small> <small>or go to www.811.com</small> <small>(or look for a white cap or sign in the ground)</small>	
PORT FOURCHON TERRACES & LIVING SHORELINE	
SOUTHERN AREA PLAN VIEW	
 DUCKS UNLIMITED INC. <small>15500 WINDY HOLLOW, DUCKS, MISSISSIPPI 39307</small> <small>15500 WINDY HOLLOW, DUCKS, MISSISSIPPI 39307</small> <small>TEL: 601-857-3815</small> <small>FAX: 601-857-3817</small> <small>WWW.DUCKSUNLIMITED.COM</small> <small>CONTRACT: 24/20/2024</small>	
Fig.	REVISIONS
	DATE
4 OF 11	



Ducks Unlimited / Conoco Phillips

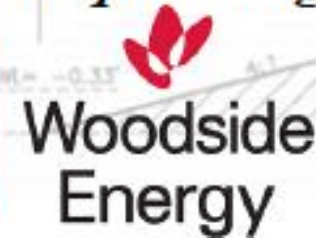
Restore
R
or
R
Retreat

PORT FOURCHON TERRACING & LIVING SHORELINE MANGROVE PLANTING

DEC 5th - 7th, 2024



We'd like to thank all our sponsors and volunteers who made this planting possible!



Thank You For Your Attention & Support



restore or retreat
working to save our coast, community and culture

Atchafalaya River



www.restoreorretreat.org



[www.facebook.com/
restoreorretreat](https://www.facebook.com/restoreorretreat)



@RestoreRetreat



@RestoreRetreat



Achieving comprehensive coastal restoration since 2000