

# IMPLEMENTATION UPDATE

GLENN LEDET, JR., PE, EXECUTIVE DIRECTOR



# 109 ACTIVE PROJECTS

37

68

4

| PROJECT TYPE                  | CONSTRUCTION | E & D | PLANNING |
|-------------------------------|--------------|-------|----------|
| HURRICANE PROTECTION (34)     | 15           | 17    | 2        |
| MARSH CREATION (36)           | 9            | 27    |          |
| BANK STABLIZATION (1)         |              | 1     |          |
| RIDGE RESTORATION (2)         |              | 2     |          |
| SHORELINE PROTECTION (8)      | 3            | 5     |          |
| BARRIER ISLANDS/HEADLANDS (4) | 1            | 3     |          |
| DIVERSIONS (3)                | 2            | 1     |          |
| HYDROLOGIC RESTORATION (6)    | 1            | 5     |          |
| OYSTER BARRIER REEF (0)       |              |       |          |
| RECREATIONAL USE (3)          | 3            |       |          |
| OTHER (11)                    | 3            | 6     | 2        |





# CONSTRUCTION UPDATES

## Labranche Shoreline Protection Project

---

*St. Charles Parish*

- *Construction began on January 15, 2025*
- *Access Channel Dredging Ongoing*
- *Rock Placement to begin in the next month*
- *Est. Cost: \$24.5 Million*

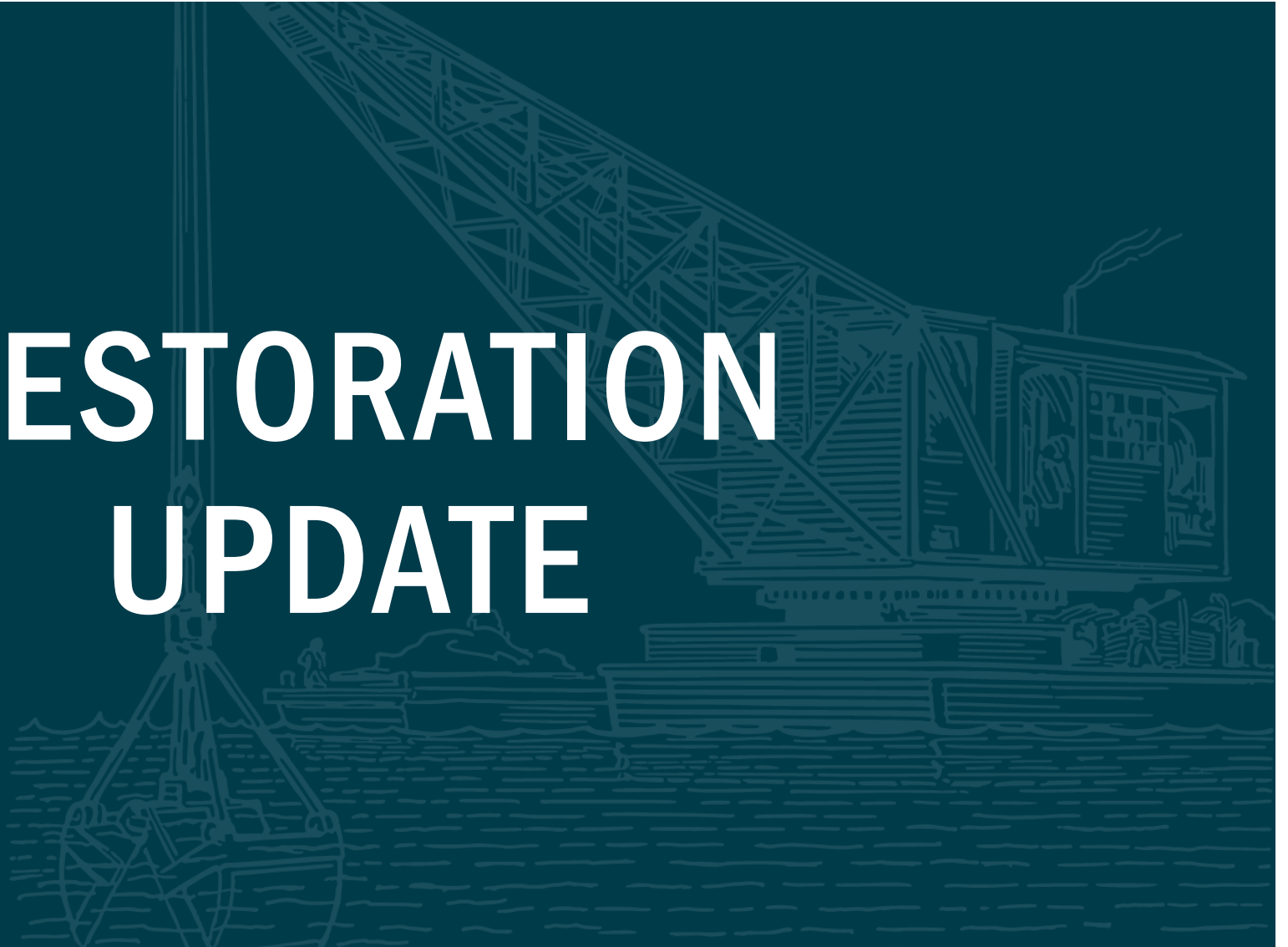
## Grand Bayou Ridge and Marsh Restoration

---

*Plaquemines Parish*

- *Construction on Earthen Containment Dikes began January 12, 2025*
- *Weeks Marine, LLC.*
- *Est. Cost: \$62.4 Million*

# RESTORATION UPDATE







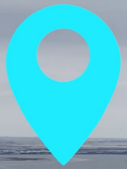
# TERREBONNE ISLAND RESTORATION

*Terrebonne Parish*



# TERREBONNE ISLAND RESTORATION

*Terrebonne Parish*



TERREBONNE HOUMA NAVIGATION CANAL  
ISLAND RESTORATION

TERREBONNE PARISH

# VIDEO

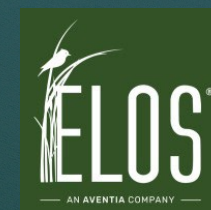






# TERREBONNE ISLAND RESTORATION

*Terrebonne Parish*







# RIVER REINTRODUCTION INTO BAYOU LAFOURCHE PUMPING CAPACITY IMPROVEMENTS

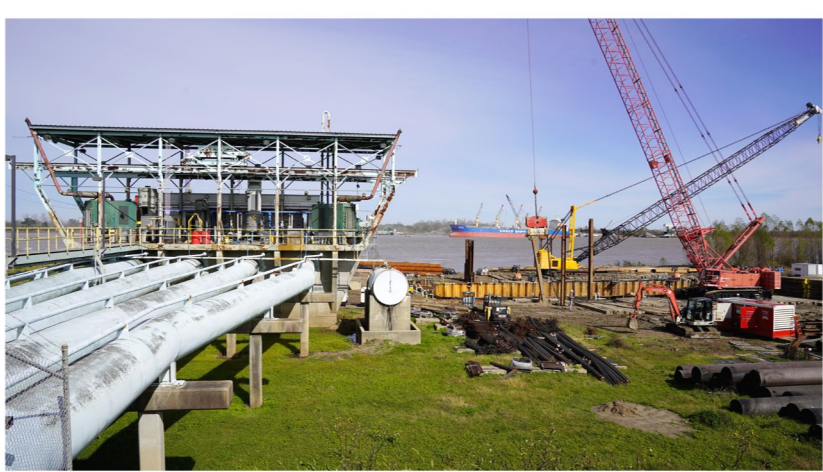
*Assumption, Ascension, Lafourche, and Terrebonne Parishes*





# RIVER REINTRODUCTION INTO BAYOU LAFOURCHE PUMPING CAPACITY IMPROVEMENTS

*Assumption, Ascension, Lafourche, and Terrebonne Parishes*







# RIVER REINTRODUCTION INTO BAYOU LAFOURCHE PUMPING CAPACITY IMPROVEMENTS

*Assumption, Ascension, Lafourche, and Terrebonne Parishes*







# RECREATIONAL USE IMPROVEMENTS



# BAYOU PIGEON BOAT LAUNCH

*Iberville Parish*

# BAYOU PIGEON BOAT LAUNCH

*Groundbreaking – January 29, 2025*





# VIDEO



**BAYOU PIGEON BOAT LAUNCH  
IMPROVEMENTS GROUNDBREAKING**





# BAYOU PIGEON BOAT LAUNCH

Iberville Parish



**GEOENGINEERS**

**NEEL-SCHAFFER**  
Solutions you can build upon

**LA TERRE ENGINEERING, LLC**

**LA CONTRACTING  
ENTERPRISE**

**FUGRO**





# FY 2026 ANNUAL PLAN UPDATE



# TIMELINE

Draft Annual Plan Presented to CPRA Board – January 15, 2025

Public Comment Period Ends: March 22, 2025

Final Annual Plan Presented to CPRA Board – April 16, 2025

Final Annual Plan Submitted to Legislature – TBD



200 ATTENDEES ACROSS 4 MEETINGS – 43 PUBLIC COMMENTS



Lake Charles



Houma



Jefferson

# PUBLIC COMMENTS

## EMAIL

Public comments will be accepted via email to:

[coastal@la.gov](mailto:coastal@la.gov)

## ONLINE

Comment portal available online at [AP26.COASTAL.LA.GOV](https://ap26.coastal.la.gov)

## MAIL

Written comments will be accepted via mail to:

Annual Plan Comment  
150 Terrace Avenue  
Baton Rouge, LA 70802

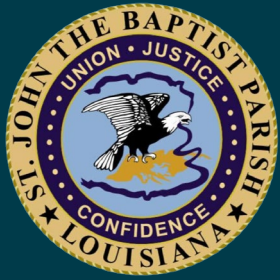
---

**CPRA must receive all comments by March 22, 2025**

A stylized map of Louisiana is shown in the background, rendered in a light blue color against a darker blue background. The map includes the state's outline and major water bodies like the Gulf of Mexico and Lake Charles.

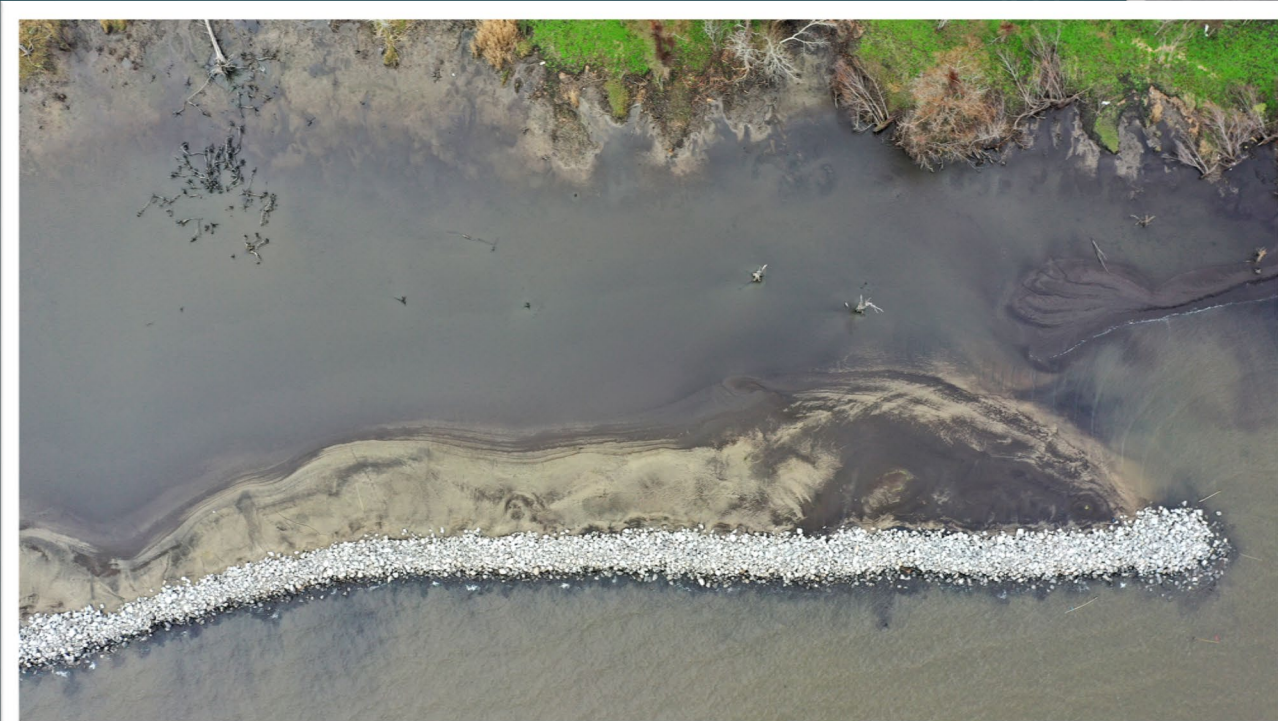
# PARISH PROJECT HIGHLIGHT





# LAKE PONTCHARTRAIN SHORELINE PROTECTION

*ST. JOHN THE BAPTIST PARISH*



A stylized, light blue background graphic within a circular frame. It depicts a pond with reeds on the left and a bridge on the right. The text is centered over this graphic.

# **ADDITIONAL CPRA UPDATES**





NFWF

AMERICA THE BEAUTIFUL

*2024 Grant Slate*

**CHANDELEUR ISLAND  
RESTORATION PROJECT**

**\$5,000,000**





# SUPER BOWL LIVING SHORELINE BUILD

LAFOURCHE PARISH



# GREEN







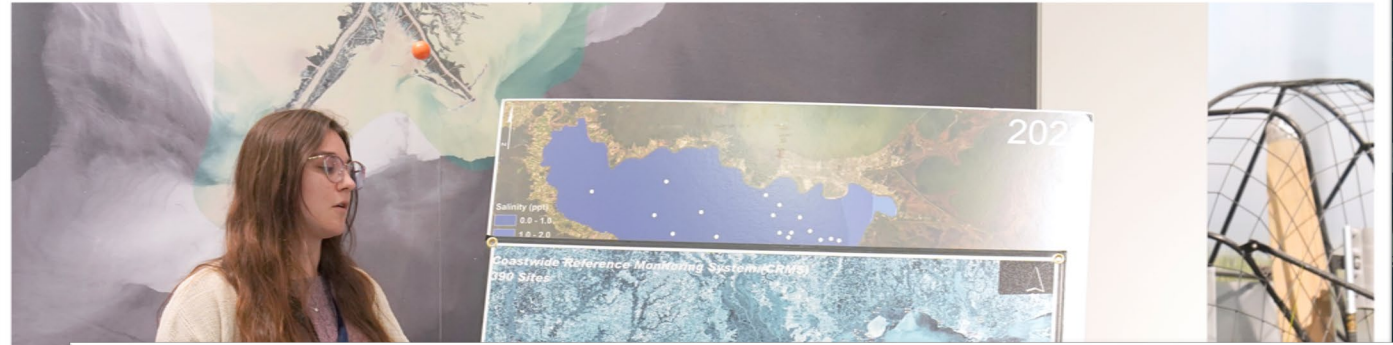
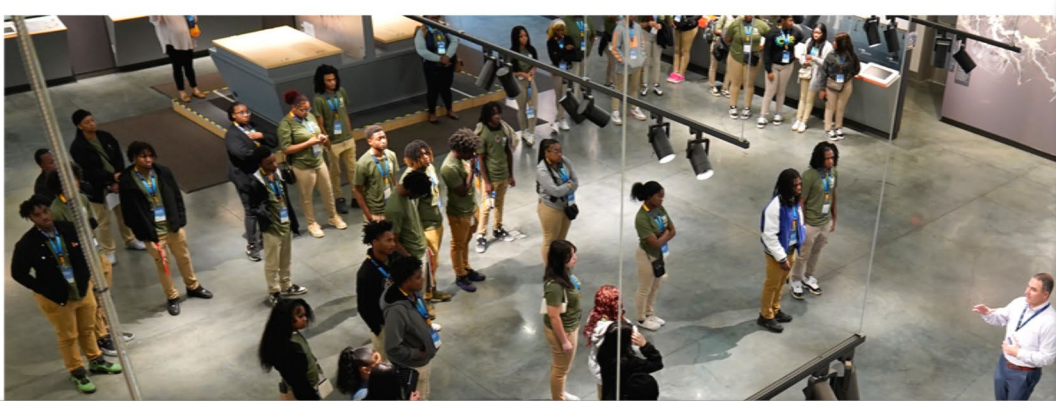
# SUPER BOWL LIX COMMUNITY GREEN PROJECT

# VIDEO





# INDUSTRY INTERACTION DAYS





# COOK OFF FOR THE COAST

## ST. BERNARD PARISH







## PROJECT SOLICITATION



**The Atchafalaya Master Plan is a multi-year process driven by cutting-edge coastal science and extensive engagement from local interests.** The Plan will be the cornerstone to guide future investments for decades to come. The Atchafalaya Master Plan will solicit project ideas and concepts directly from the people of the Atchafalaya Region to include as part of the Atchafalaya Master Plan – community members, landowners, business owners, subject matter experts, academic leaders, and more – throughout the plan development process. Your input will help us gain a clearer understanding of the specific needs and challenges associated with each project, enabling us to make more informed decisions.

### PROJECT SOLICITATION:

- Scan the QR code to submit your project ideas.
- Projects must align with one or more of the Atchafalaya Master Plan objectives and fit into one of seven project types.
- Each individual who submits a project will receive feedback on how their submitted project is being considered in the planning process.
- Projects will be accepted until February 28, 2025.







# CONGRESSIONAL FLY-IN WASHINGTON, D.C.

**NEW DATES COMING SOON!**

---

*Join us to advocate in our nation's capital as part of Sharing Offshore Revenues from Energy Resources (SHORES). The SHORES coalition is building momentum and support for the revenue sharing legislation which is essential for the future of our coastal states, communities, and ecosystems.*

**CONTACT: NEAL.MCMILLIN@LA.GOV**



A photograph of the Louisiana State Capitol building in Baton Rouge, Louisiana, featuring a tall central tower and a wide base, surrounded by greenery and trees. The image is used as a background for a promotional graphic.

# COASTAL DAY

AT THE LOUISIANA LEGISLATURE

MONDAY, MAY 12, 2025





# STATE OF THE COAST

**MAY 20-22, 2025**  
**Ernest N. Morial Convention Center**  
**New Orleans, LA**

The State of the Coast (SOC) conference is the largest statewide conference of its kind, providing an interdisciplinary forum to exchange timely and relevant information on the dynamic conditions of Louisiana's coastal communities, environment and economy. The Coalition to Restore Coastal Louisiana (CRCL) produces this forum, the need for which grows with every acre of land lost to the Gulf of Mexico, along with our partners: the Coastal Protection and Restoration Authority of Louisiana and the Water Institute.

**CONNECT WITH US!**



***@LOUISIANACPRA***

