

LOWER MISSISSIPPI RIVER COMPREHENSIVE MANAGEMENT STUDY

COL Cullen Jones, P.E., PMP
District Commander
New Orleans District
U.S. Army Corps of Engineers
19 February 2025



U.S. ARMY



US Army Corps
of Engineers®



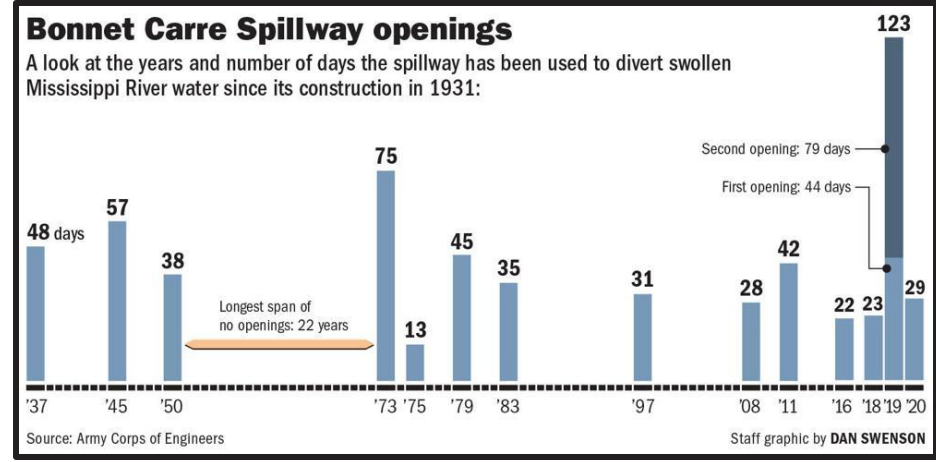
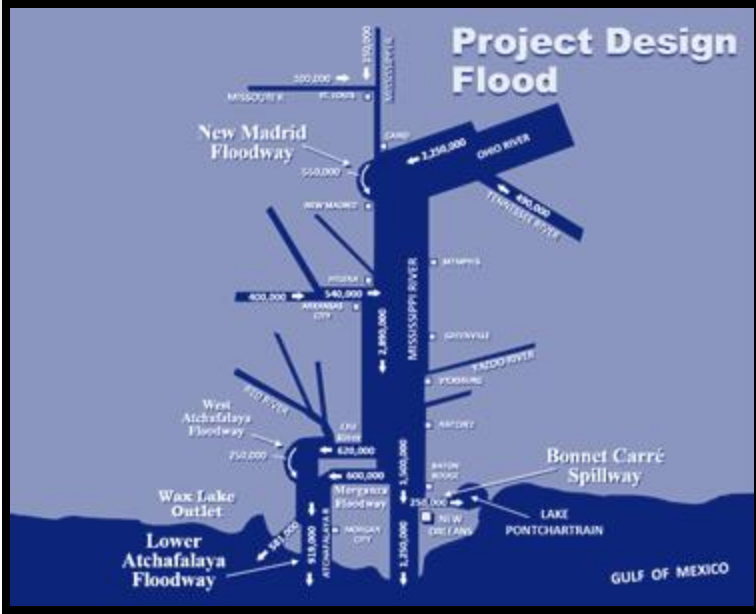


BLUF

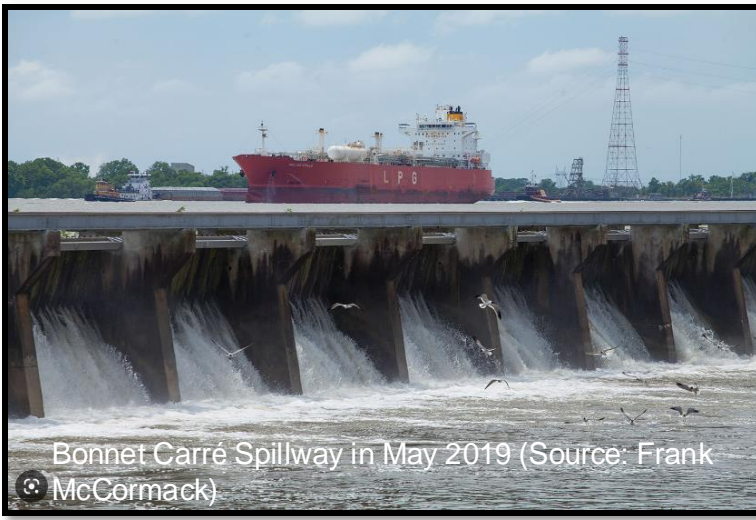
- ✓ **Generational opportunity**
- ✓ **Actionable recommendations and tiered feasibility studies**
- ✓ **Public and stakeholder engagement**
- ✓ **Leverages foundational studies and research**
- ✓ **Leverages work of other federal and state agencies**
- ✓ **Partnership with CPRA and Coastal Master Plan**



PROBLEMS AND OPPORTUNITIES ALONG THE MISSISSIPPI RIVER



Research indicates long-term geomorphic changes are occurring in the Mississippi River



The **2011 flood** was a result of **precipitation** that was approximately **60% of the project design storm**, yet measured discharges were within **78% to 91% of PDF flows**.



U.S. ARMY



US Army Corps
of Engineers®



STUDY AUTHORITY

WRDA 2020, Sec 213 - \$25M, 5 Years:

(1) PURPOSE – The Secretary, in collaboration with the heads of other Federal agencies and pursuant to subsection (d)(1)(A), shall conduct a comprehensive study of the Lower Mississippi River basin from Cape Girardeau, Missouri, to the Gulf of Mexico*. The study will identify recommendations of actions to be undertaken by the Secretary, under existing authorities or after congressional authorization, for the comprehensive management of the basin for multiple purposes:

- A. Hurricane and storm damage reduction, flood risk management, structural and nonstructural flood control, and floodplain management strategies; (*Priority Missions*)
- B. Navigation (*Priority Mission*)
- C. Ecosystem and environmental restoration (*Priority Mission*)
- D. Water supply (*Explore when Compatible*)
- E. Hydropower production (*Explore when Compatible*)
- F. Recreation (*Explore when Compatible*)
- G. Other purposes as determined by the Secretary

*Officially known as Gulf of America per “Restoring Names that Honor American Greatness” Executive Order by President Trump (1/20/2025)



**WRDA 2022, Sec 8343 –
100% Federally Funded Study**

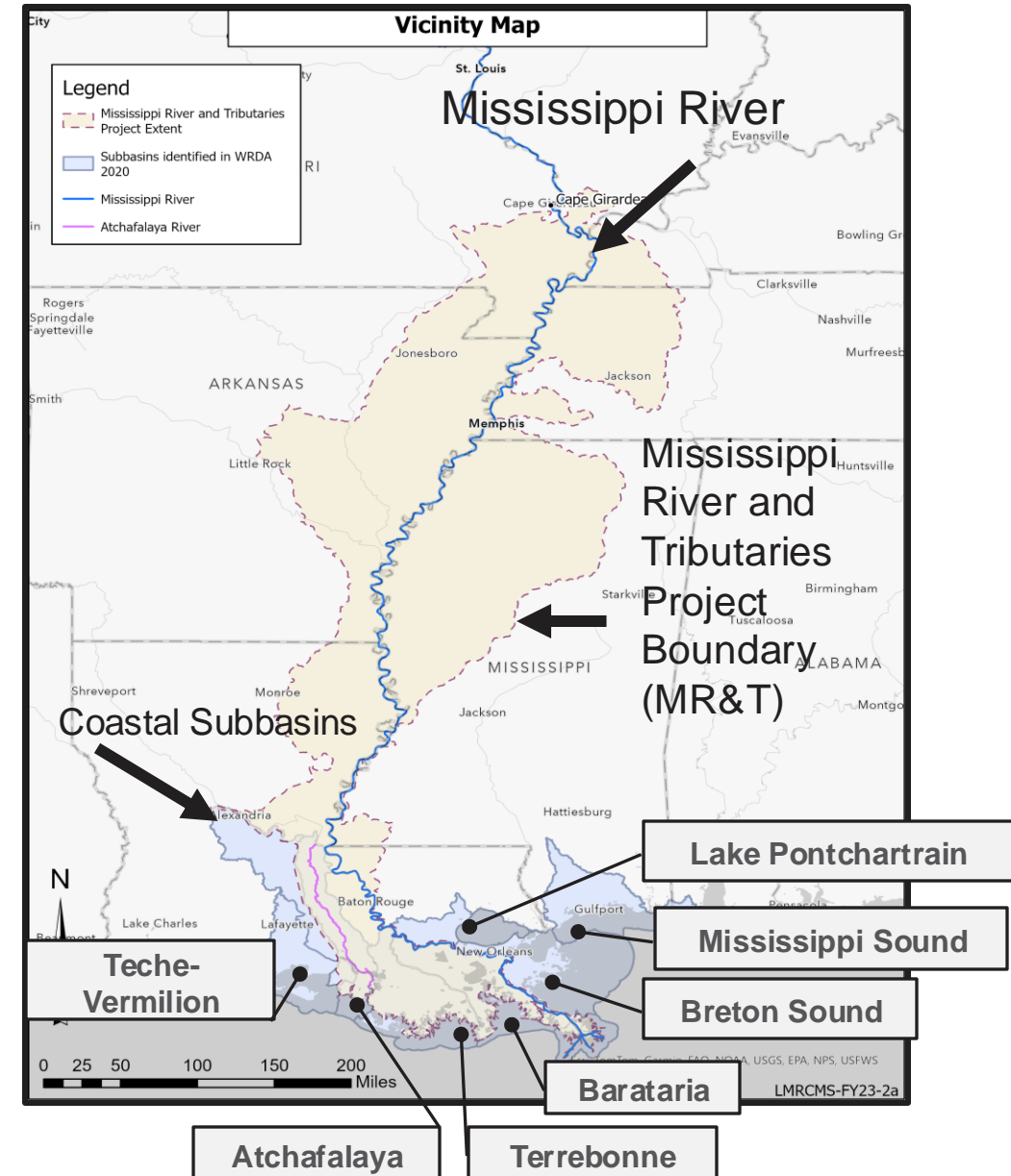


U.S. ARMY

US Army Corps
of Engineers®

STUDY AREA BOUNDARY

- ✓ Cape Girardeau, MO, to the Gulf of America
- ✓ Incorporates the Mississippi River and Tributaries (MR&T) Project Area and coastal subbasins
- ✓ Engagements with:
 - ✓ Governors' designee from 7 states
 - ✓ State agency representatives in 7 states
 - ✓ Federal representatives from 10 agencies
 - ✓ 6 USACE districts: New Orleans, Vicksburg, Memphis, St. Louis, Little Rock, & Mobile
 - ✓ 44 Federally-recognized Tribes





U.S. ARMY

US Army Corps
of Engineers®

WHAT WE'VE ACCOMPLISHED TO DATE



Scoping

Alternatives
EvaluationFeasibility Level
Analysis

Chief's Report

Executed Phase 0 (Jan – June 2023) – Regional USACE collaboration

- Created Inventory of Existing Data and Models
- Conducted Literature Review
- Established Governance Structure
- Established initial Problems, Opportunities, Objectives, and Constraints for the Study

Hosted Planning Charrettes – Refined Problems, Opportunities, Objectives, and Constraints (Fall 2023)

Conducted Federal & State Interagency Meeting – January 2024

Hosted Public Scoping Meetings

- 32 Public Meetings (Feb – Mar 2024)

Quarterly Public Updates (June 2024/Oct 2024, Jan 2025 - ongoing)

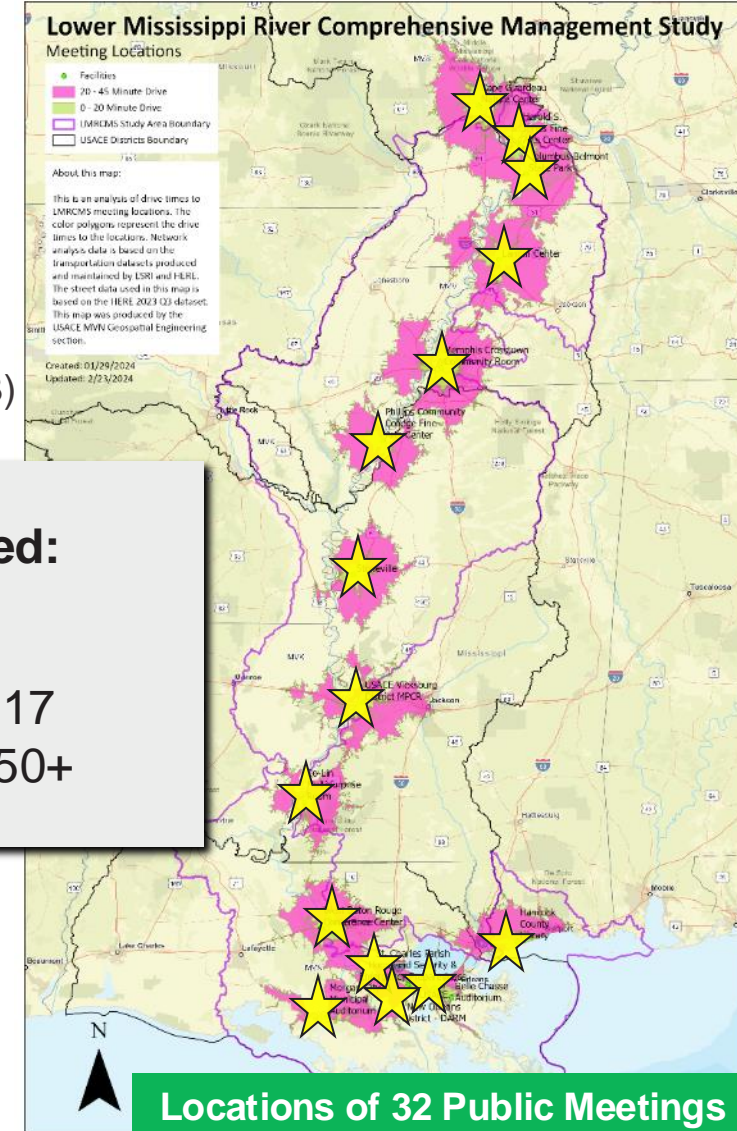
Stakeholder Group briefings (40+ meetings)

Hosted Tribal Nations Meetings – April – May 2024, ongoing

Hosted State Partnering Group – 2 April 2024, 10 July 2024, 30 October 2024 (recurring in April/Oct) – Appointed by 7 State Governors

Where we started:

- 387 Problems - 15
- 147 Opportunities - 17
- 400 + Measures - 150+





U.S. ARMY



US Army Corps of Engineers®



WAY AHEAD



- Develop Alternatives
- Execution of model runs
- Continue coordination on environmental model requirements
- Continue strategic engagements with partners and agencies
- Continue engagement with Tribal Nations
- Expand community outreach



U.S. ARMY



US Army Corps of Engineers®

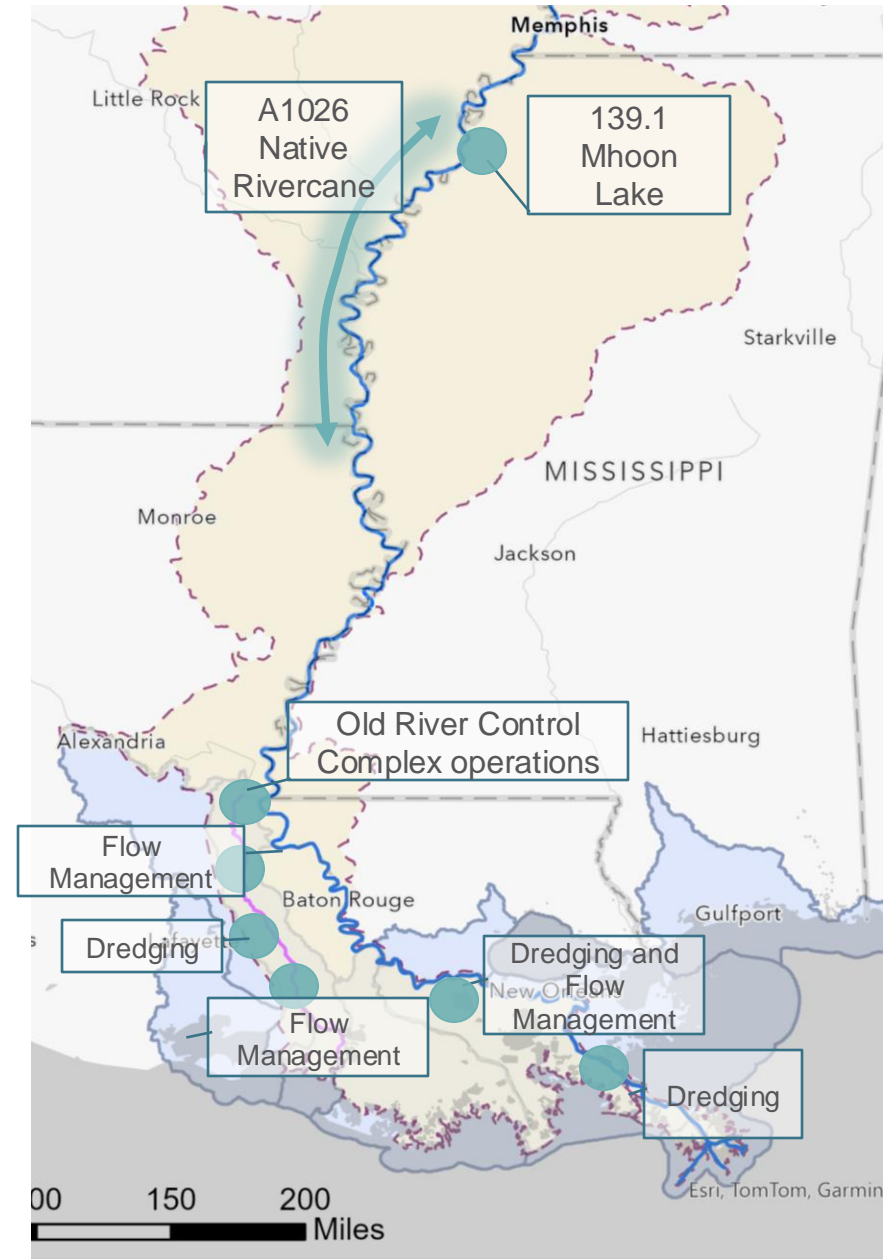


LOUISIANA

Louisiana comments: Many complementary efforts in LA. Important to share information and coordinate.

Example Themes of Measures

- ✓ Modify structure operations
- ✓ Dredging for ecosystem restoration
- ✓ Modify flow management





U.S. ARMY

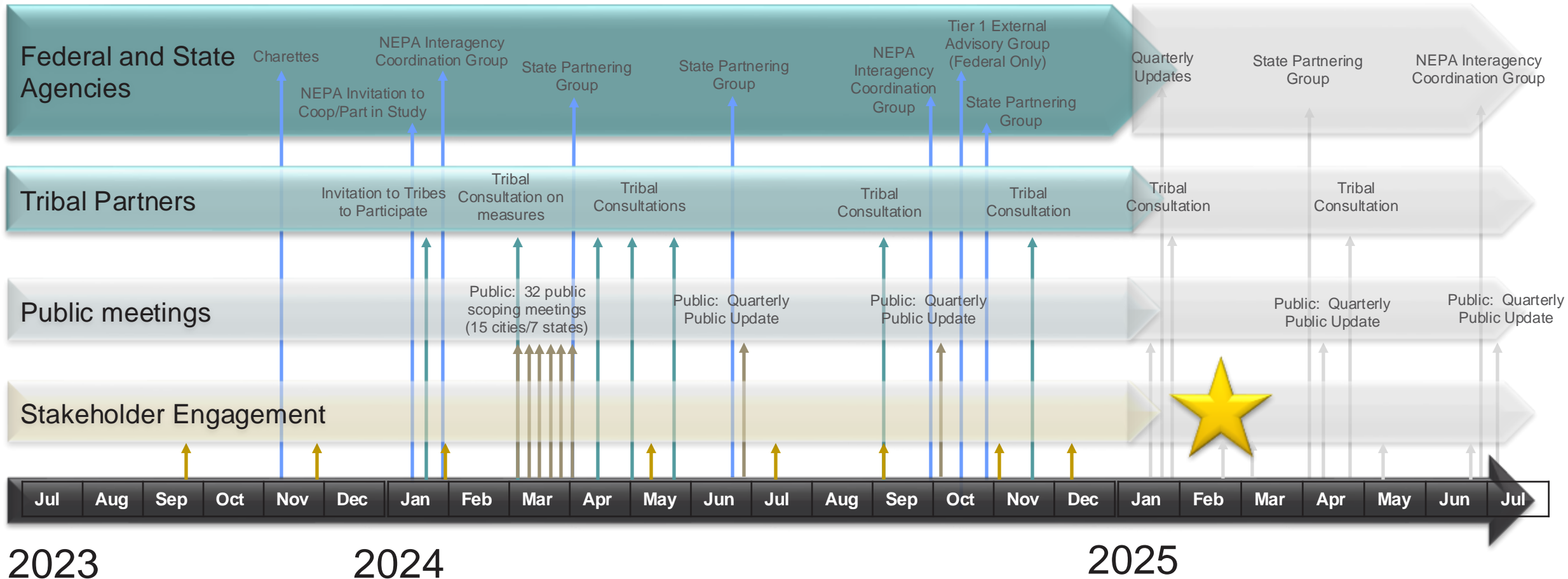


US Army Corps of Engineers



STAKEHOLDER ENGAGEMENT

Implementing strategic engagement with agency partners, tribes, stakeholders, and the public demonstrates our commitment to long-term collaboration and cooperation throughout the Study process.





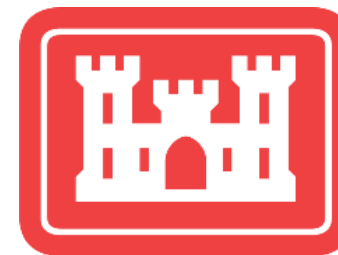
U.S. ARMY

US Army Corps
of Engineers®

SPECIFIC ENGAGEMENTS WITH CPRA

USACE engages in the following CPRA-lead efforts:

- Atchafalaya Basin Master Plan
- Lower Mississippi River Management Program
- Upper Basin Diversion Program Study
- Coastal Master Plan



CPRA engages in the following LMR Comp-specific groups:

- State Partnering Group (meets in October and April)
- Quarterly Public Update (Next update scheduled for April/May 2025)
- Interagency Advisory Group (met in October 2024)

Chairman Dove, Glenn Ledet, Brian Lezina and others have been actively engaged with USACE



FOLLOW US FOR THE LATEST ANNOUNCEMENTS



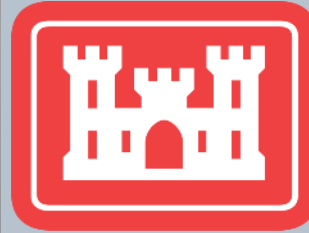
Study Website

Email:

LMRComp@usace.army.mil

Website:

www.mvn.usace.army.mil/About/LMRComp/



District website

www.mvn.usace.army.mil



Facebook

www.facebook.com/usacenola



Instagram

www.instagram.com/usace_nola



X (Twitter)

twitter.com/usacenola