

Draft Fiscal Year 2026 Annual Plan

INTEGRATED ECOSYSTEM RESTORATION AND
HURRICANE PROTECTION IN COASTAL LOUISIANA

GLENN LEDET JR., EXECUTIVE DIRECTOR; BRIAN LEZINA, CHIEF OF PLANNING
JOE WYBLE, PROJECT MANAGEMENT ADMINISTRATOR



Public Comments

EMAIL

Public comments will be accepted via email to:

coastal@la.gov

ONLINE

Comment portal available online AP26.COASTAL.LA.GOV

MAIL

Written comments will be accepted via mail to:

Annual Plan Comment
150 Terrace Avenue
Baton Rouge, LA 70802

IN-PERSON:

Attend a public meeting to submit comments.

CPRA must receive all comments by March 22, 2025

Timeline

01 / Draft Annual Plan Presented to CPRA Board – Jan. 15, 2025

02 / Public Comment Period Ends: March 22, 2025

03 / Final Annual Plan Presented to CPRA Board – April 16, 2025

04 / Final Annual Plan Submitted to Legislature – April 21, 2025



CPRA ANNUAL PLAN PUBLIC HEARINGS:

Jan 28: Lake Charles

Jan. 30: Houma

Feb. 11: Jefferson

Feb. 12: Virtual Webinar (1:30pm-2:30pm)

5:30 pm - 6:30 pm

For full details, visit:

coastal.la.gov/calendar/

Year in review

JANUARY

Jeff Landry takes office as the 57th Governor of Louisiana

FEBRUARY

Governor Jeff Landry appoints coastal leadership positions:

- Gordy Dove, CPRA Board Chairman
- Glenn Ledet Jr., CPRA Executive Director
- Tony Alford, Chairman of the Governor's Advisory Commission

MARCH

CPRA receives the two largest grants ever awarded by the Gulf Coast Ecosystem Restoration Council (RESTORE Council):

- A \$130 million grant to partially fund the River Reintroduction into Maurepas Swamp project
- A \$163 million grant for the Houma Navigation Canal (HNC) Lock Complex project

APRIL

CPRA hosts Coastal Industry Day to promote Louisiana's working coast

MAY

The Louisiana Legislature unanimously passes CPRA's Fiscal Year 2025 Annual Plan passage

CPRA announces \$7 million in parish matching awards to support flood control, marsh creation, and hydrologic restoration projects across five coastal parishes

JUNE

The Sharing Offshore Revenues from Energy Sources (SHORES) Coalition travels to Washington, D.C. to promote long-term funding streams for coastal resilience

AUGUST

Governor Landry joins CPRA to break ground on Phase 2 construction on Houma Navigation Canal Lock Complex

SEPTEMBER

Hurricane Francine makes landfall in south central Louisiana and recovery begins

OCTOBER

CPRA breaks ground on Southwest Coastal Louisiana to fortify thousands of homes across Cameron, Calcasieu, and Vermilion Parishes

CPRA breaks ground on the Reach A Levee System, the first federal levee segment under construction by USACE on Morganza to the Gulf

NOVEMBER

The Reinvesting in Shoreline Economies and Ecosystems Act (RISEE) passes the U.S. Senate's Natural Resources Committee

Louisiana passes amendment to use offshore alternative energy revenue for coastal restoration

DECEMBER

CPRA breaks ground on the River Reintroduction into Maurepas Swamp

Congress passes 2024 Water Resources Development Act (WRDA), including major authorizations for coastal Louisiana



PROGRAM	REVENUE/EXPENDITURES PROJECTIONS
GOMESA	\$221 Million
NRDA	\$373 Million
NFWF	\$462 Million
RESTORE	\$179 Million
CWPPRA (Federal)	\$142 Million
Surplus/Cap outlay	\$288 Million
State (Non-Surplus)	\$82 Million
Other	\$52 Million

Total Projected Revenues and Expenditures FY 2026

BY FUNDING PROGRAM

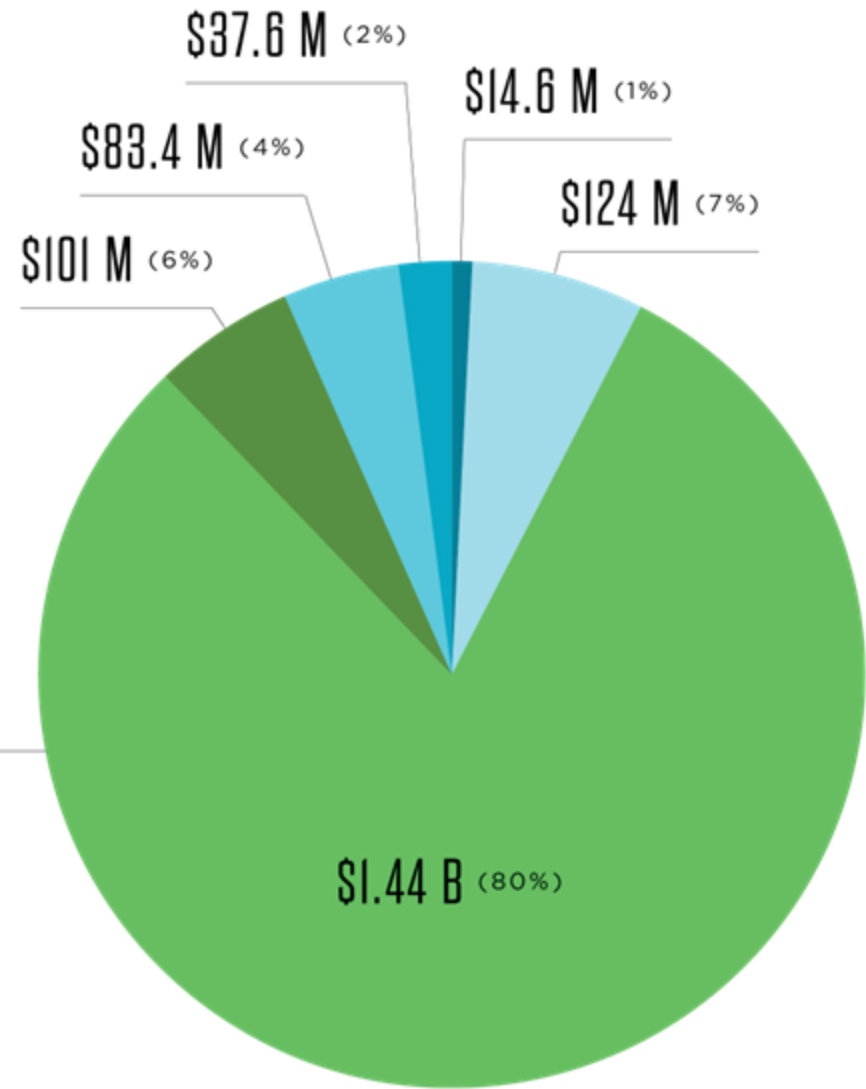
Total Projected Expenditures FY 2026

BY PROJECT PHASE

- PLANNING
- OPERATION, MAINTENANCE & MONITORING
- ENGINEERING & DESIGN
- ONGOING PROGRAMS & INITIATIVES
- CONSTRUCTION
- OPERATING COSTS

FY 2026 TOTAL EXPENDITURES

\$1.80 BILLION



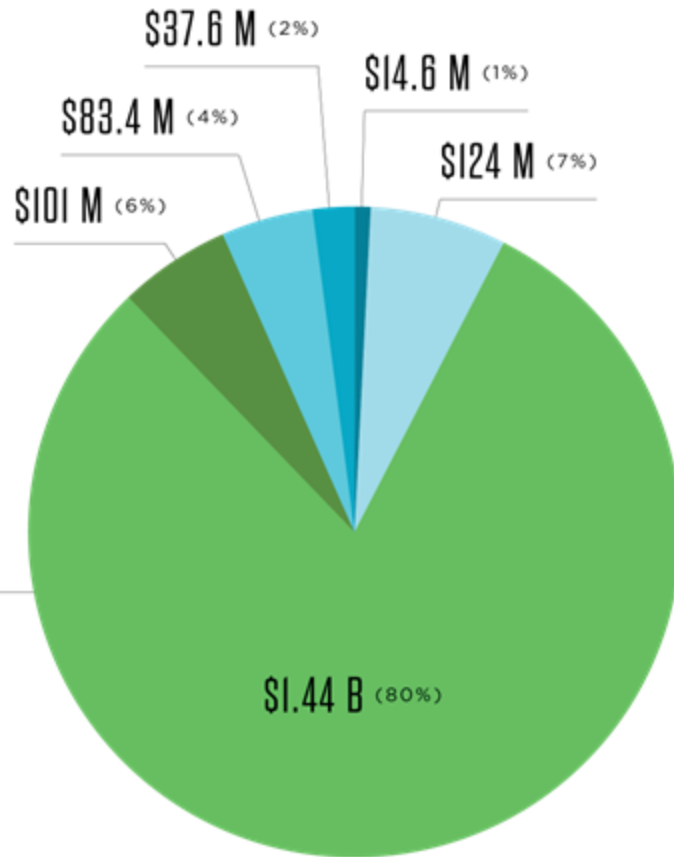
Total Projected Expenditures

BY PROJECT PHASE

- PLANNING
- ENGINEERING & DESIGN
- CONSTRUCTION
- OPERATION, MAINTENANCE & MONITORING
- ONGOING PROGRAMS & INITIATIVES
- OPERATING COSTS

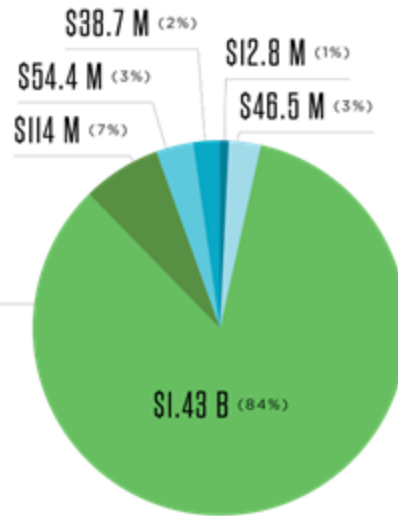
FY 2026 TOTAL EXPENDITURES

\$1.80 BILLION



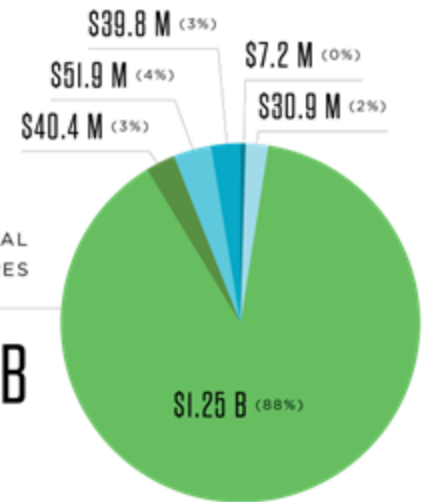
FY 2027 TOTAL EXPENDITURES

\$1.70 B



FY 2028 TOTAL EXPENDITURES

\$1.42 B



\$1.80 BILLION
INVESTMENT IN OUR COAST

\$1.44 BILLION ALLOCATED FOR CONSTRUCTION

20 DREDGING PROJECTS

SLATED FOR
CONSTRUCTION
TOTALING

77.8 MILLION CUBIC YARDS
OF SEDIMENT TO CREATE OR NOURISH MORE THAN

14,983 ACRES

**133 ACTIVE
PROJECTS**

PROJECTS
WILL
SUPPORT

12,249 DIRECT JOBS
\$723 MILLION IN LABOR INCOME





PROJECTS IN CONSTRUCTION:

- 3 No Name Bayou Marsh Creation & Nourishment
- 4 South Grand Chenier Marsh Creation – Baker Tract
- 5 Southwest Coastal Louisiana
- 6 Cameron Gulf Shoreline Protection**
- 7 Schooner Bayou Restoration
- 9 Southwest Coastal – Rockefeller Refuge Shoreline Protection Component
- 12 Chenier Au Tigre Shoreline Protection Gap Closure
- 13 Cheniere Au Tigre Ridge Restoration
- 15 Calcasieu-Sabine Large-Scale Marsh and Hydrologic Restoration – Lake Rim Drainage Structures
- 16 Calcasieu-Sabine Large-Scale Marsh & Hydrologic Restoration-Conveyance Improvements
- 17 Calcasieu-Sabine Large-Scale Marsh & Hydrologic Restoration – Large-Scale Marsh Creation & Nourishment

Southwest Region (46 PROJECTS IN OM&M)

19 ACTIVE PROJECTS: 11 IN CONSTRUCTION, 8 IN E&D

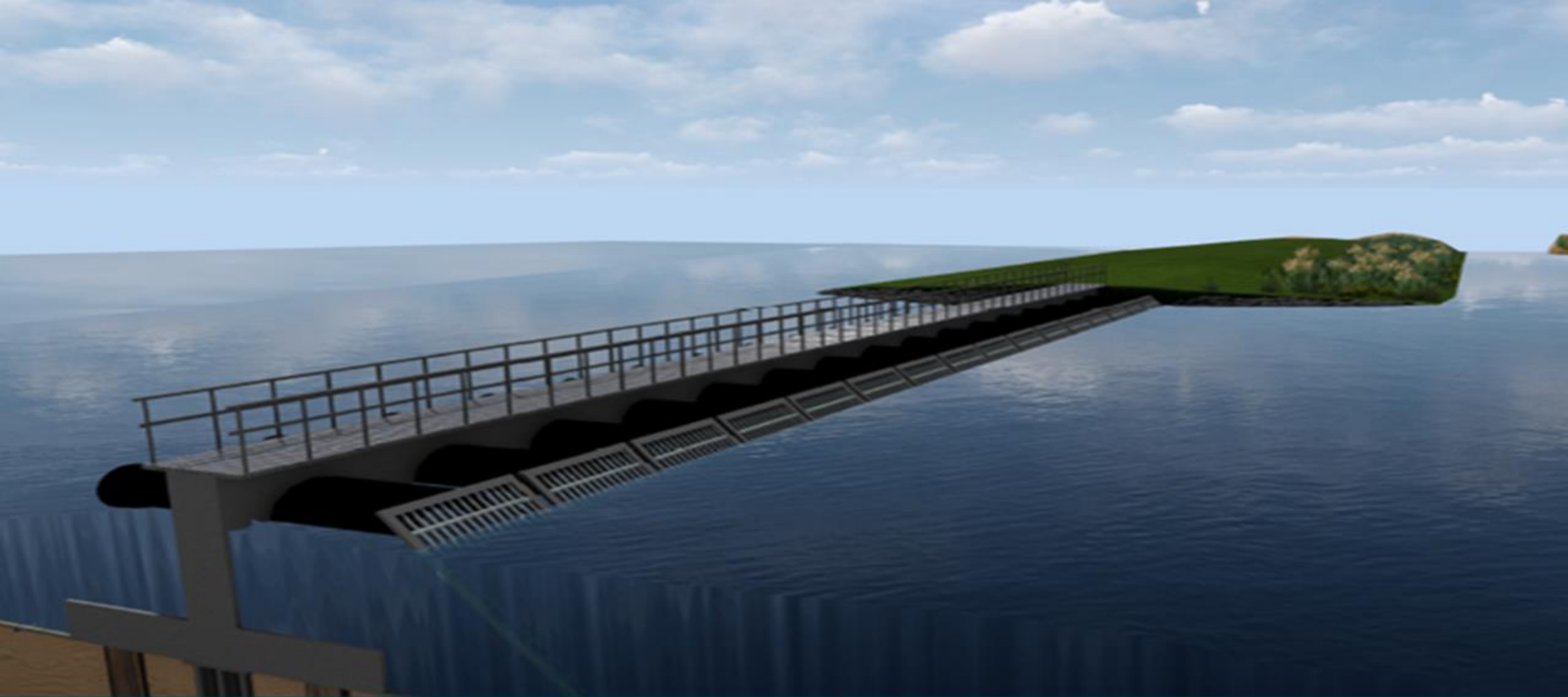


Southwest Coastal Non-Structural

A wide-angle photograph of a coastal landscape. In the foreground, there is a grassy area with a road. Behind the road, there are dunes covered in low-lying vegetation. The ocean extends to the horizon under a clear blue sky. The word "VIDEO" is overlaid in large white letters across the middle of the image.

VIDEO

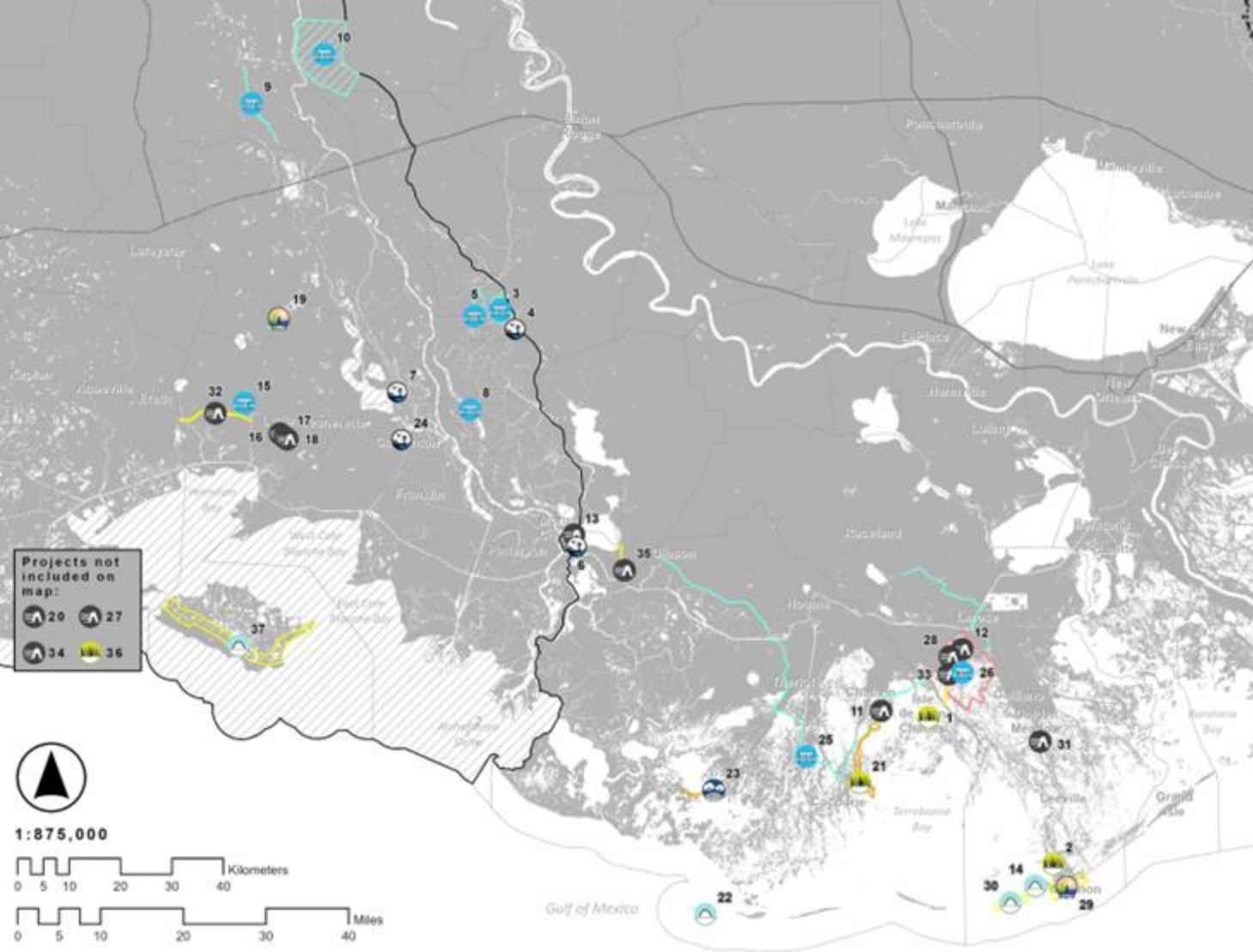
Southwest Coastal Shoreline Protection



Calcasieu-Sabine Large-Scale Marsh and Hydrologic Restoration



No Name Bayou Marsh Creation



PROJECTS IN CONSTRUCTION:

- 1 Island Road Marsh Creation and Nourishment
- 2 West Fourchon Marsh Creation
- 3 East Grand Lake Upper Region
- 4 Bayou Pigeon Boat Launch
- 9 Grimmett Canal
- 11 Morganza to the Gulf
- 12 Reach L Mitigation
- 14 West Belle Headland Repairs
- 15 Rodere Canal Water Control Structure
- 16 Little Valley Bayou Flood Protection System
- 17 Rutton Rill Road Flood Protection Project
- 18 Stumpy Bayou Flood Protection Project
- 21 Terrebonne Basin Ridge and Marsh Creation- Bayou Terrebonne Increment
- 23 Bayou Dularge Ridge and Marsh Creation
- 24 Chitimacha Boat Launch
- 25 Houma Navigation Canal Lock Complex
- 26 Grand Bayou Pump Station
- 31 Section A West Levee Improvements

South Central Region (41 IN OM&M)

37 ACTIVE PROJECTS: 18 IN CONSTRUCTION, 16 IN E&D, 3 IN PLANNING



Welcome Governor Jeff Landry



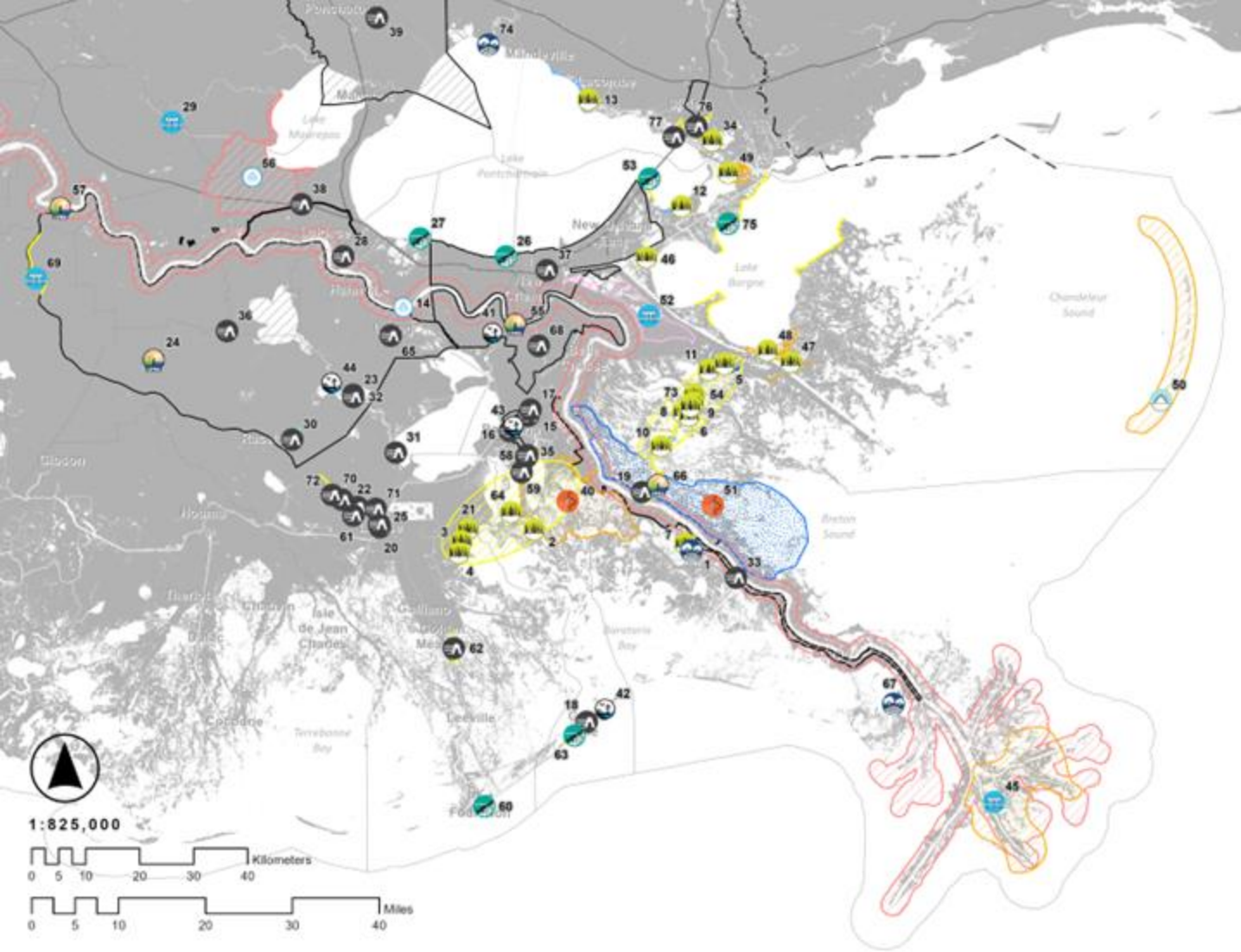
Houma Navigational Canal Lock Complex

An aerial photograph of a bayou system. The water is a mix of dark blue and brownish-grey. A dense line of green trees runs along the left and right banks. In the foreground, there's a small island or peninsula with a sandy beach on the left and a small pond or lagoon. The sky is clear and blue.

Bayou Pigeon Boat Launch



Reach A Groundbreaking (MTG)

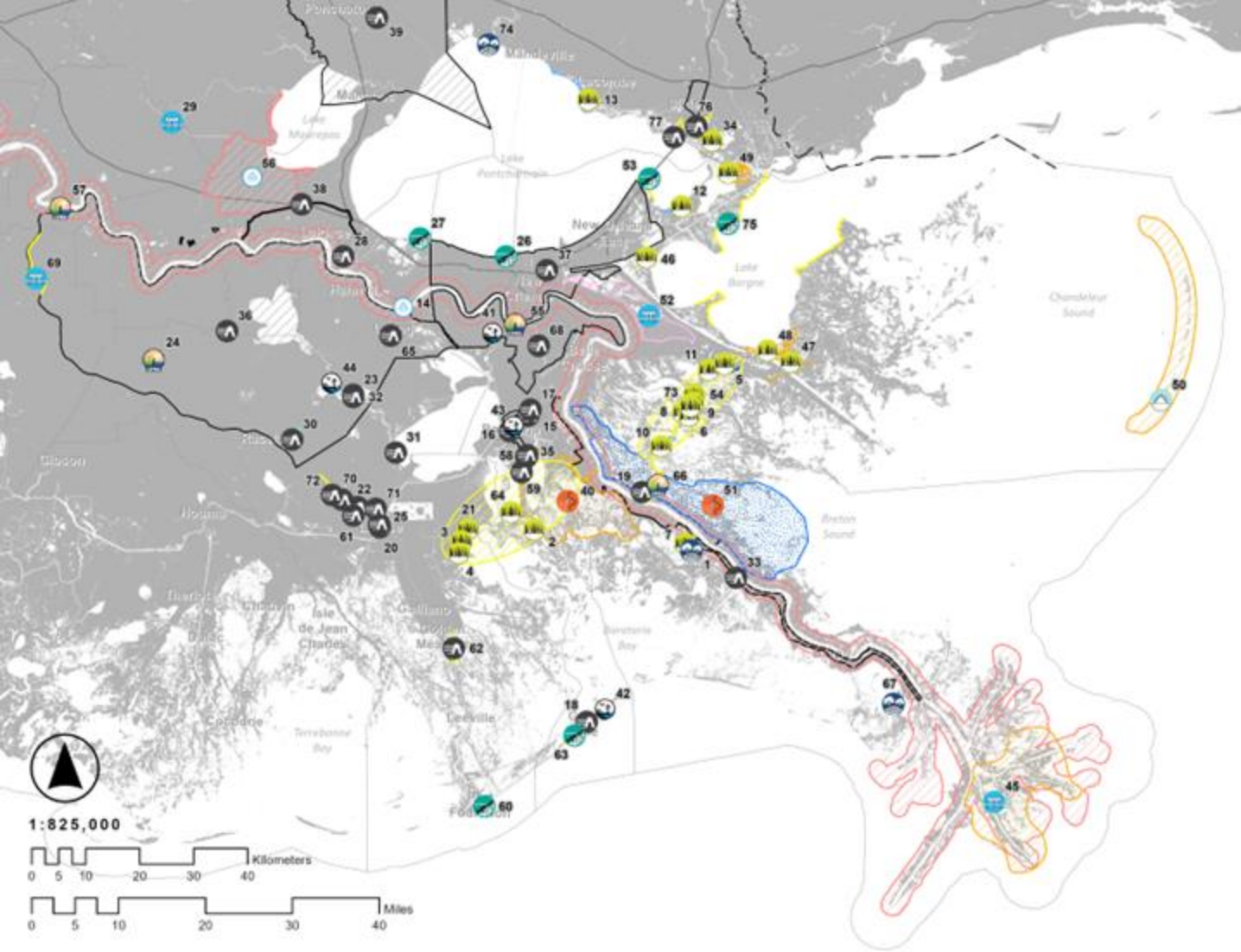


PROJECTS IN CONSTRUCTION:

- 6 Grand Bayou Ridge and Marsh Creation
- 7 Mid Breton Landbridge Marsh Creation & Terracing
- 9 East Delacroix Marsh Creation and Terracing
- 10 Breton Landbridge Marsh Creation (West)
- 11 Reggio Marsh Creation and Hydrologic Restoration
- 12 St. Catherine Island Marsh Creation and Shoreline Protection
- 13 Bayou Cane Marsh Creation
- 15 Rosethorne Tidal Protection
- 17 Crown Point Tidal Protection
- 19 Plaquemines Parish Drainage Improvements
- 20 Ted Gisclair Lock Structure
- 21 Northwest Little Lake Marsh Creation Increment 2
- 22 MTG Levee Improvements- NLLD
- 23 St. Charles Parish Crawford Canal/Sunset Pump Station
- 24 Sugar Ridge Pump Station
- 25 Industrial Park Avenue Improvements
- 26 Jefferson Parish Bucktown Living Shoreline Protection
- 27 Labranche Shoreline Protection
- 28 Montz Pump Station
- 39 Amite River Diversion Canal Swamp Restoration
- 32 Sunset Pump Station Upgrade- Frontal Protection
- 33 New Orleans to Venice

Southeast Region (110 IN OM&M)

77 ACTIVE PROJECTS: 44 IN CONSTRUCTION, 29 IN E&D, 4 IN PLANNING



PROJECTS IN CONSTRUCTION :

- 34 New Orleans to Venice Mitigation – Plaquemines Non-Federal
- 37 SELA- Overall
- 38 West Shore-Lake Pontchartrain, Louisiana Hurricane Protection
- 40 Mid-Barataria Sediment Diversion
- 41 Bayou Segnette State park improvements
- 42 Grand Isle State Park Improvements
- 43 Louisiana Wetlands Education Center
- 44 Des Allemands Boat Launch
- 46 Golden Triangle Marsh Creation
- 47 Bayou LaLoutre Ridge Restoration and Marsh Creation
- 48 Lake Borgne Marsh Creation- Increment 1
- 50 **Chandeleur Island Restoration Project**
- 54 **Lake Lery Marsh Creation (Phase 2)**
- 56 River Reintroduction into Maurepas Swamp
- 57 Pumping Capacity Improvements Phase 1
- 58 Goose Bayou Tidal Protection
- 59 Lower Lafitte Tidal Protection
- 60 Port Fourchon Shoreline Protection
- 61 MTG Easter Tie-in Levee Improvements
- 62 Section A East Increment Improvement
- 65 **St. Charles Cousins Pump Station (UBRR)**
- 77 Eden Isles Flood Protection

Southeast Region (110 IN OM&M)

77 ACTIVE PROJECTS: 44 IN CONSTRUCTION, 29 IN E&D, 4 IN PLANNING

An aerial photograph of a marsh creation project. The foreground shows a body of water with several small, rectangular islands of green marsh vegetation. A dirt road or levee runs through the middle ground, separating the water from a larger, flatter area of brownish soil and sparse vegetation. In the background, the horizon is flat under a blue sky with scattered white clouds. A large, white, sans-serif word 'VIDEO' is superimposed over the center of the image.

VIDEO

Lake Borgne Marsh Creation



Lower Lafitte Tidal Protection



Lower Lafitte Tidal Protection

An aerial photograph of a large-scale construction project. A long, straight dirt road or embankment runs through the center of the frame, extending towards a dense line of trees in the distance. On the left side of the road, there is a thick forest of green trees. On the right side, the ground is a mix of dirt and sparse green vegetation. Several pieces of heavy machinery are visible: a yellow bulldozer is working on the dirt road in the foreground, a red dump truck is parked on the road further down, and another yellow excavator is positioned on the right side of the road. The sky is blue with scattered white clouds. The word "VIDEO" is overlaid in large, white, sans-serif capital letters across the middle of the image.

VIDEO

**West Shore Lake Pontchartrain Hurricane
Protection**



VIDEO

**River Reintroduction into Maurepas Swamp
Groundbreaking**

Coastal Initiatives

THE COASTAL CENTER AT NICHOLLS STATE UNIVERSITY



PARISH PARTNER PROJECTS

Restore Parish Match Program

- Lake Leary Marsh Creation
- Rockefeller Refuge Gulf Shoreline Protection

Parish Matching Program

- \$7 million awarded across six parishes



CTAC

COASTAL TECHNICAL
ASSISTANCE CENTER

Mid-Breton Landbridge Marsh Creation & Terracing





Barataria Basin Landbridge and Large-Scale Marsh Creation

SPANISH PASS INCREMENT 1



Terrebonne Basin Barrier Islands

EAST TIMBALIER, CASSE TETE, & CALUMET ISLANDS RESTORATION



Terrebonne Basin Barrier Islands

WEST BELLE HEADLAND



Barataria Barrier Islands

CAMINADA HEADLAND

Atchafalaya Annual Plan

Atchafalaya Basin Annual Plan – Appendix D



FY 26 PROJECTS:

Water Quality/Water Management

- Dredging in Big Bayou Pigeon
- Grimmett Canal Improvements
- Pointe Coupee Water Flow Improvements
- Murphy Lake Depth Restoration
- East Grand Lake Upper Region

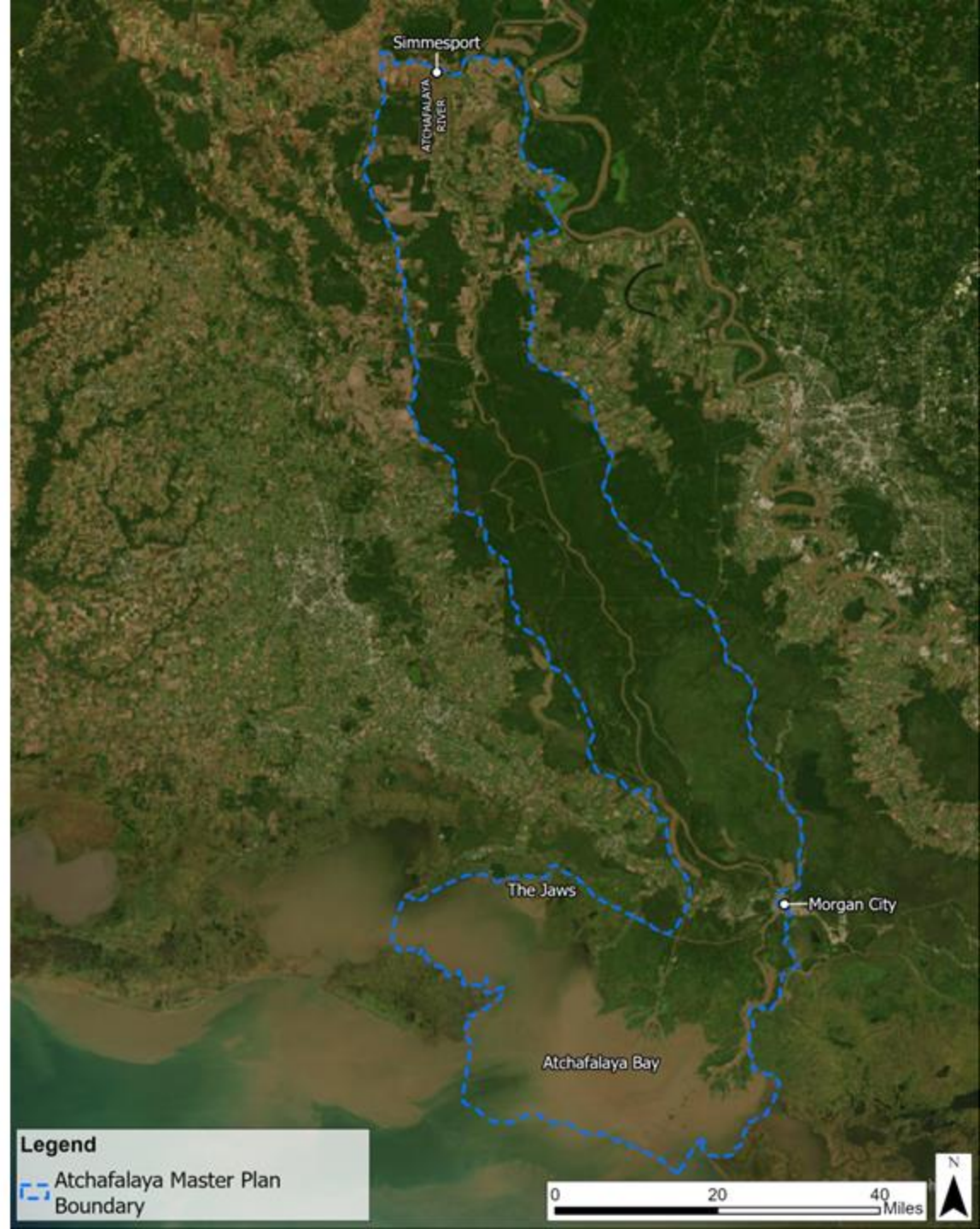
Recreation/Access, Other

- Sandy Cove Boat Launch
- Cajun Coast Welcome Center Trail
- Bayou Pigeon Boat Launch Improvements
- Update to the Atchafalaya Basin Floodway System, Louisiana State Master Plan

Atchafalaya Master Plan

GOAL: MANAGE THE USE OF
ATCHAFALAYA RIVER SYSTEM
SEDIMENTS AND WATER TO
MAXIMIZE ECOSYSTEM FUNCTIONS
AND SUPPORT CONTINUED HUMAN
USES

Public project solicitation is currently ongoing



View the Draft FY 2026 Annual Plan & Interactive Map

[AP26.COASTAL.LA.GOV](https://ap26.coastal.la.gov)

COMMENTS ACCEPTED UNTIL
MARCH 22, 2025



Public Comments

EMAIL

Public comments will be accepted via email to:

coastal@la.gov

ONLINE

Comment portal available online AP26.COASTAL.LA.GOV

MAIL

Written comments will be accepted via mail to:

Annual Plan Comment
150 Terrace Avenue
Baton Rouge, LA 70802

IN-PERSON:

Attend a public meeting to submit comments.

CPRA must receive all comments by March 22, 2025