

Marsh Island Wildlife Refuge Restoration



RUDY SIMONEAUX, COASTAL PROTECTION & RESTORATION AUTHORITY
TOMMY TUMA, LOUISIANA DEPARTMENT OF WILDLIFE & FISHERIES

Marsh Island Wildlife Refuge

- Originally deeded to the State of Louisiana in 1920; managed by LDWF
- Currently brackish/intermediate habitat with very few remaining trees
- Currently ~71,000 acres (over 76,000 acres when deeded in 1920)
- Crucial wintering habitat to numerous waterfowl, wading/shorebirds, birds of prey
- Essential habitat for many fish species, alligators, and furbearers

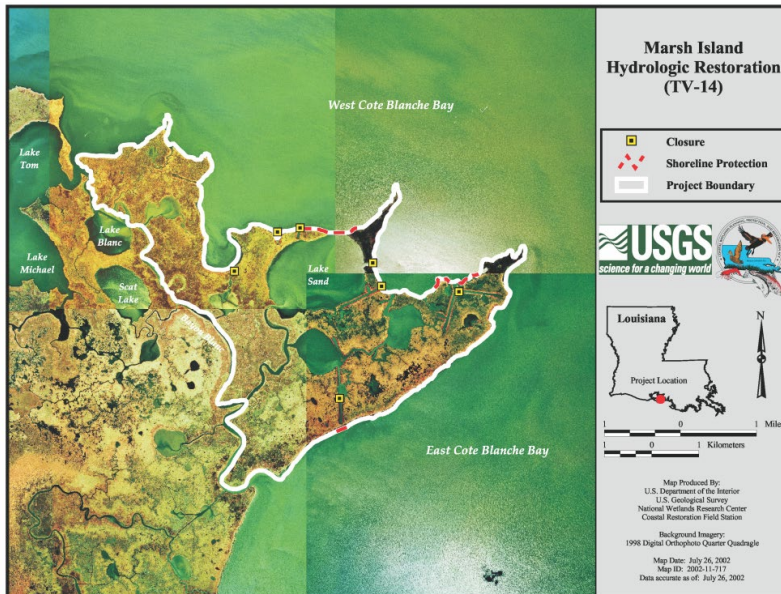


A large, faint, light-blue graphic in the background depicts a stylized tree with long, thin leaves growing out of a pot. The pot has a decorative, scalloped edge. The entire scene is set against a dark teal background.

Past Restoration Efforts

Marsh Island Hydrologic Restoration Project (TV-14)

- Funded, designed, and constructed by CWPPRA (USACE and CPRA)
- Seven canal closures and shoreline protection on NE portion of Marsh Island
- Completed in December 2001
- Total Cost - ~\$5M



East Marsh Island Marsh Creation Project (TV-21)

- Funded, designed, and constructed by CWPPRA (EPA, CPRA, NRCS)
- 362 acres of marsh creation on NE portion of Marsh Island
- Included an additional 665 acres of marsh nourishment
- Completed in December 2010
- Total Cost - ~\$18M



Lake Sand and Lake Tom Terrace Projects (TV-32/33)

- Iberia Parish CIAP Projects
- 13 Earthen Terraces at Lake Sand
- 7 Earthen Terraces at Lake Tom
- Total Cost - ~\$1.9M
- Both completed in 2013



LDWF Marsh Management

Four Distinct Marsh Management Units:

- Northeast Bird Island Unit (3,000 acres; variable and fixed crested weirs)
- Big Dam Unit (15,000; fixed crested weirs)
- Southeast Unit (1,050 acres; variable crested weirs)
- Big Impoundment Unit (8,000 acres; variable crested weirs)

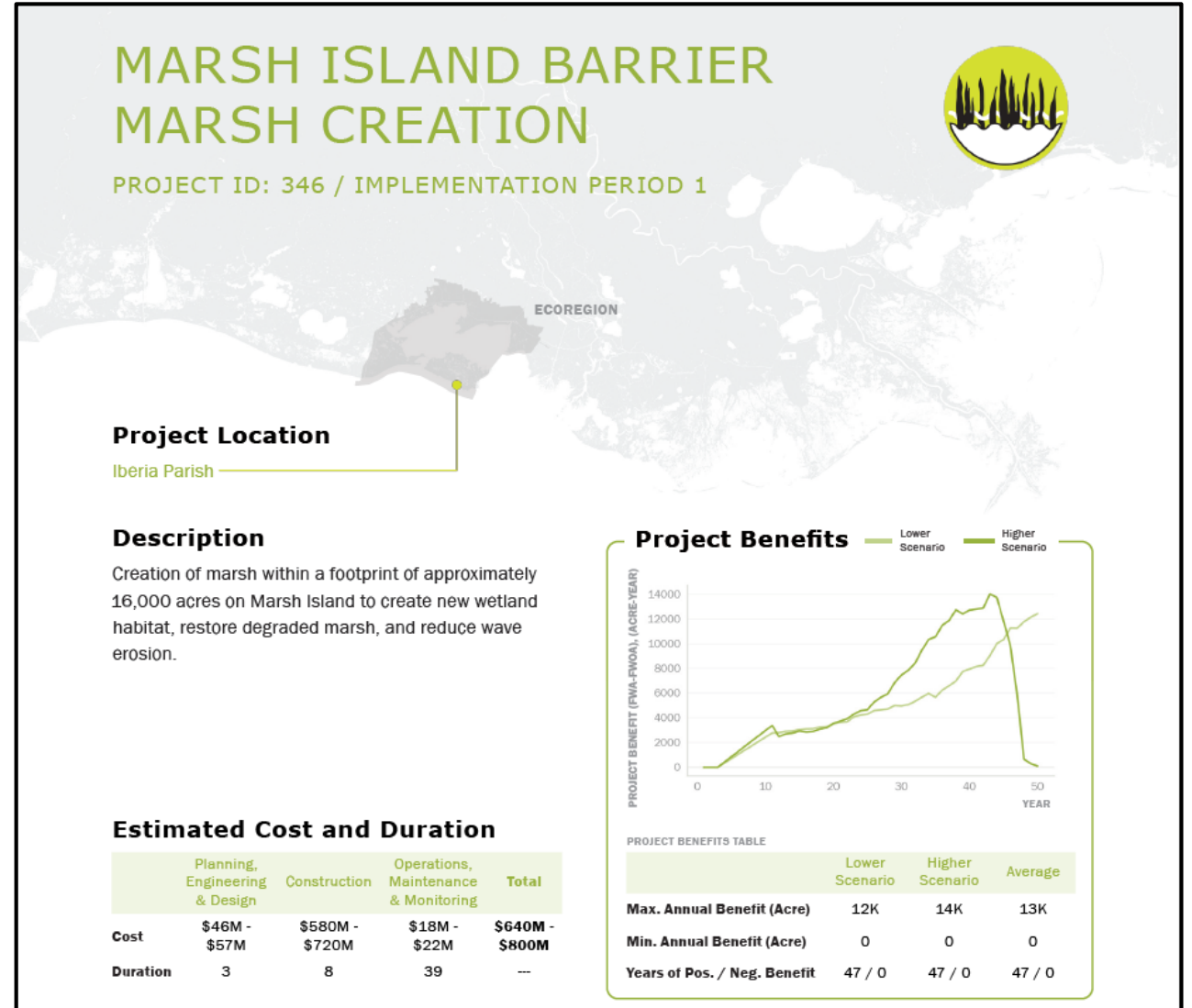


The background features a large, faint circular emblem. Inside the circle, on the left, is a stylized tree with many thin, vertical branches. On the right, there are three overlapping, rounded shapes representing water or a landscape feature. The entire scene is rendered in a light teal color against a darker teal background.

Current Restoration Plan

2023 Coastal Master Plan

- Implementation Period 1
- Create new wetlands on Marsh Island
- Restore degraded marsh
- Reduce shoreline erosion



Marsh Island Restoration Conceptual Design

Current Tasks Include:

- Review of Existing Data
- Reconnaissance Data Collection:
 - Topographic/Bathymetric Surveys
 - Geotechnical Investigation/Analysis
- Project Plan Development:
 - Coordination with LDWF
 - Conceptual Level Designs
 - Estimated Quantities
 - Probable Construction Costs
- Next Steps:
 - Identify Project(s) to advance to Full Design
 - Pursue construction funding

Marsh Island Restoration Conceptual Design



CONNECT WITH US!



@LOUISIANACPRA

