



WHITE LAKE

WETLANDS CONSERVATION AREA

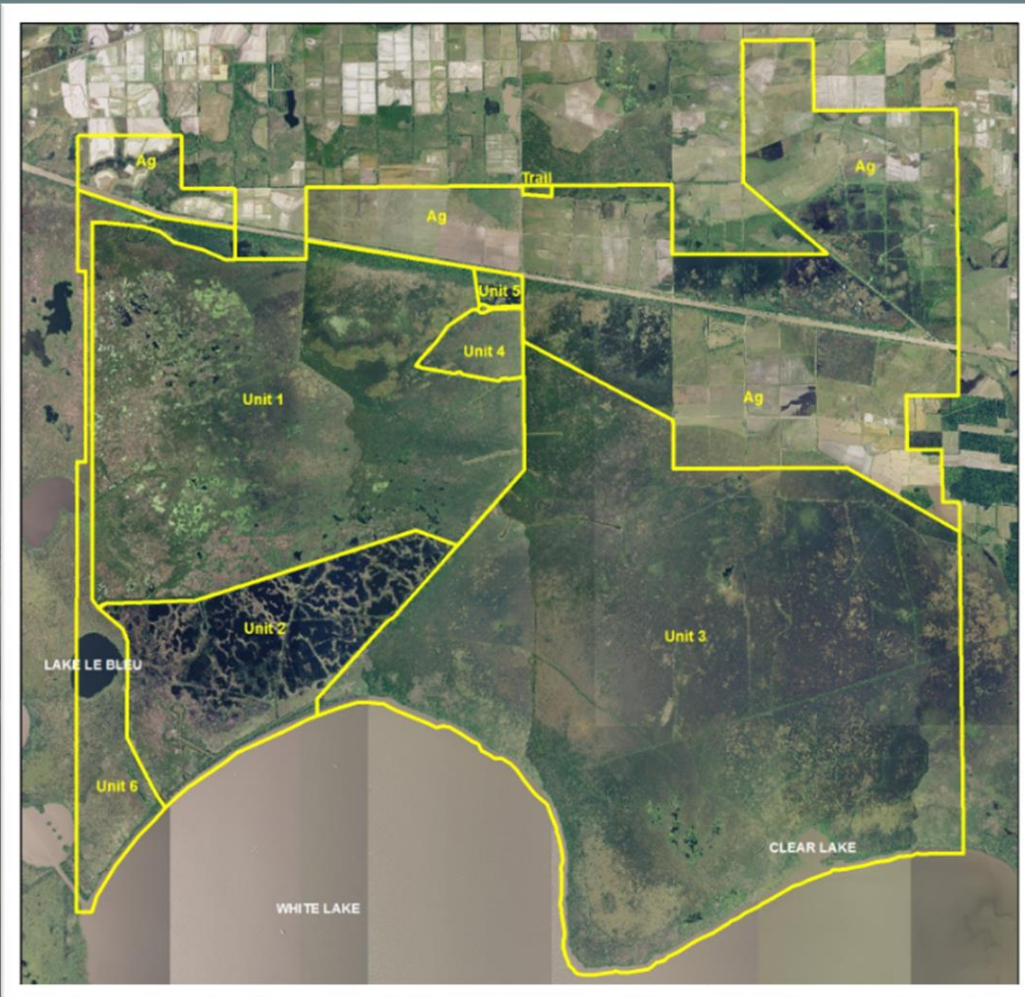
Louisiana Department of Wildlife and Fisheries

Comprehensive Master Plan Revision and Shoreline Protection Project



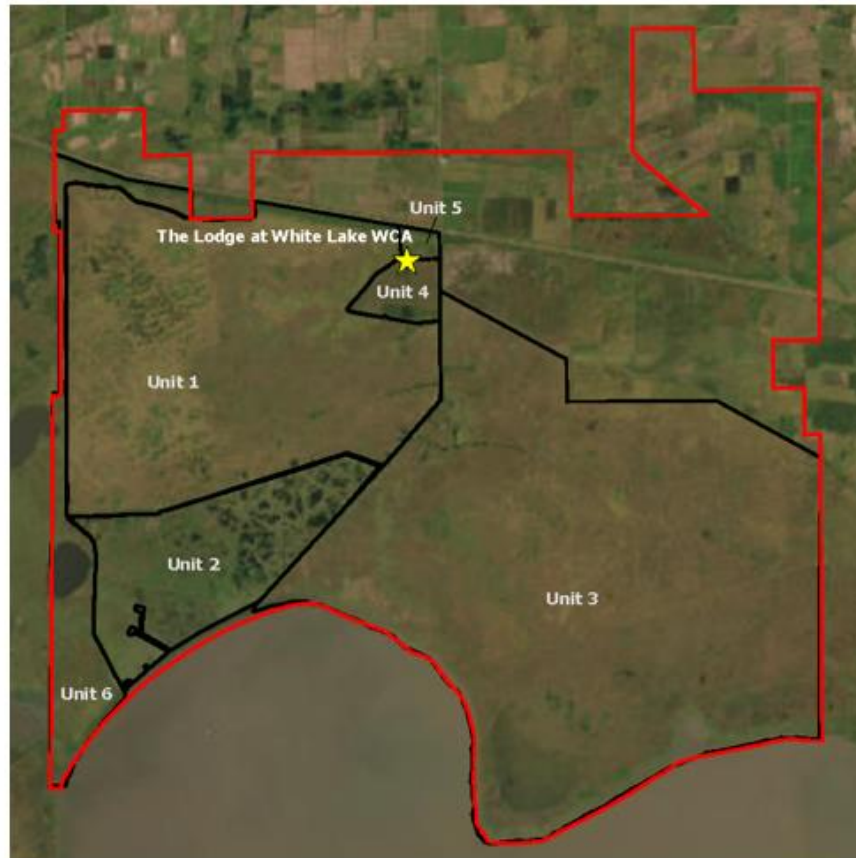
Brian Lezina, CPRA

Tommy Tuma, LDWF



- Owned and Managed by LDWF
72,000 Acres
- 75% or property freshwater marsh providing prime habitat for waterfowl, shorebirds, fishes, and alligators
- Self-sustaining property

Challenges



- Erosion of Impoundment Levees
- Unit 2 “Cadeau” Marsh Collapse
- 22 Miles of GIWW Shoreline Unprotected
- Levee Breaches Along Unit 2, GIWW, Florence Canal
- Intensive Management of Unit 4 Needed for Cranes
- Oil & Gas Infrastructure Creates Obstacles to Management
- Lodge in Need of Update, Repairs

A Vision for the WLWCA that includes...

- HABITAT RESTORATION
- HABITAT MANAGEMENT
- FLOOD PROTECTION
- SHORELINE PROTECTION
- WATER CONTROL/MANAGEMENT
- NON-CONSUMPTIVE USES
- STRUCTURES
- RESEARCH
- REVENUE GENERATION



WHITE LAKE
WETLANDS CONSERVATION AREA



PRIMARY

- Sustain Wetland Habitat
- Manage Wetland Flora and Fauna
 - Primary Focus on Waterfowl
 - Fish, Birds, Alligators
 - Vegetation
- Maintain Leased Property when:
 - Feasible
 - Compatible with Waterfowl Management

SECONDARY

- Generate Self-Sustaining Revenue
- Allow Public Access with Minimal Impact to Wildlife, Habitat
- Host Education and Outreach Activities
- Facilitate Research

Schedule Key Dates



Draft Triage Projects	Nov. 2024
Final Triage Projects	Dec. 2024
Stakeholder Interviews	Jan. – Feb. 2025
Project Alternative Development	Jan. – July 2025
Visioning Session with LDWF	Feb. 2025
Stakeholder Engagement	Feb. & Aug. 2025
Final Vision, Goals, and Objectives	May 2025
Final Projects	July 2025
Draft Master Plan to LDWF	Sept. 2025
Final WLWCA Master Plan	Oct. 2025

Shoreline Protection and Levee Stabilization

Areas of need include approximately

- Over 20 miles of shoreline along the GIWW's northern and southern banks
- 14 miles of deteriorated levee system around the WLWCA Unit 2 Impoundment
- Approximately 16 miles of White Lake's northern shoreline

WHITE LAKE WETLANDS CONSERVATION AREA



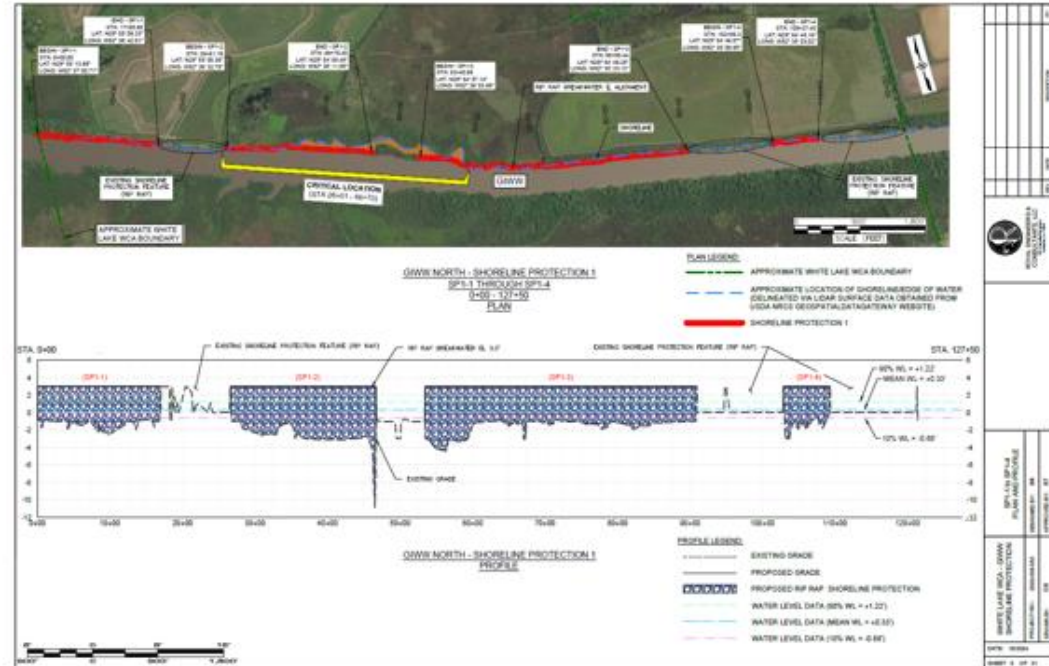
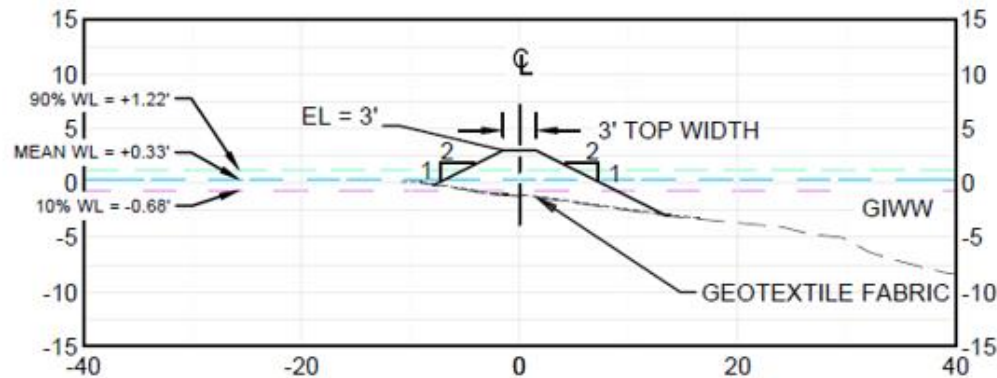
White Lake Wetlands Conservation Area
Vermillion Parish, LA

0 1 2 4 6 8 Miles



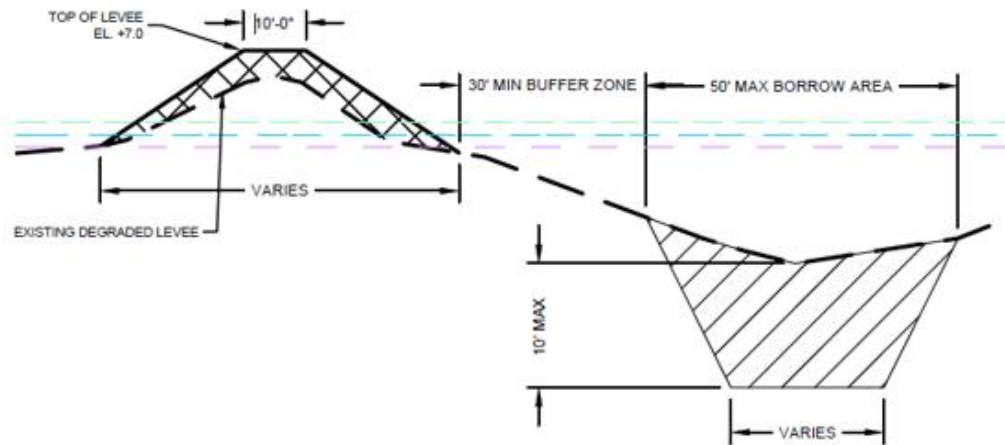
GIWW Shoreline Protection

Install shoreline protection along the GIWW banks at locations/segments which are currently unprotected, and diminishing from erosive forces, in order to reduce ongoing land loss and the risk of a breach event.



Unit 2 Levee Stabilization

Lift, reinforce, and stabilize levee system to be able to withstand future tidal and storm surge impacts

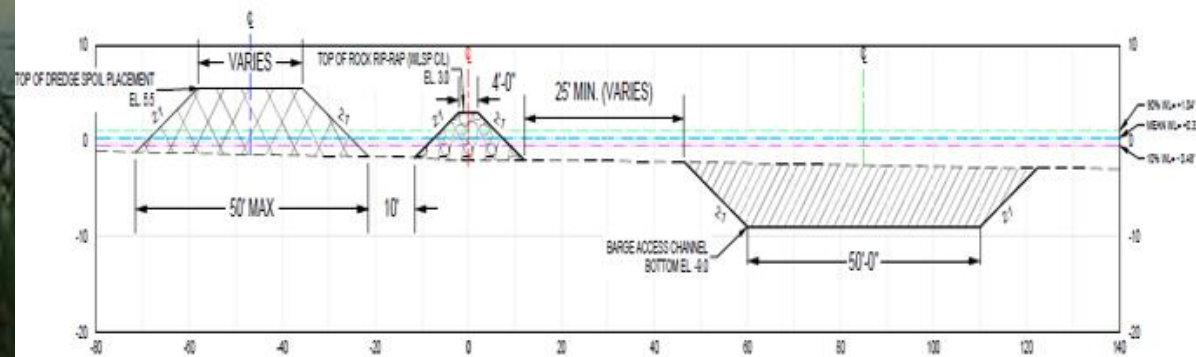


LEVEE STABILIZATION ALONG EXISTING LEVEE FOOTPRINT

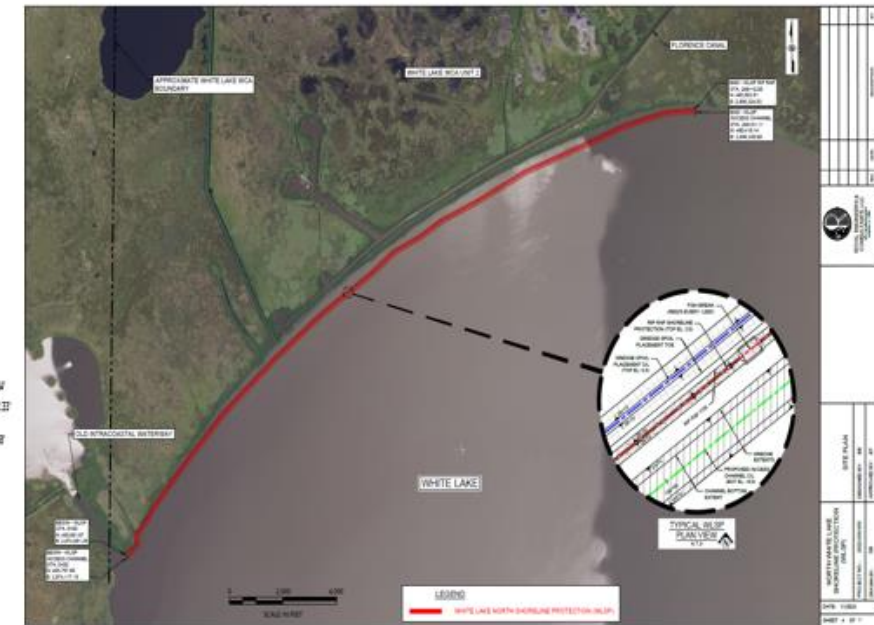


White Lake North Shoreline Protection

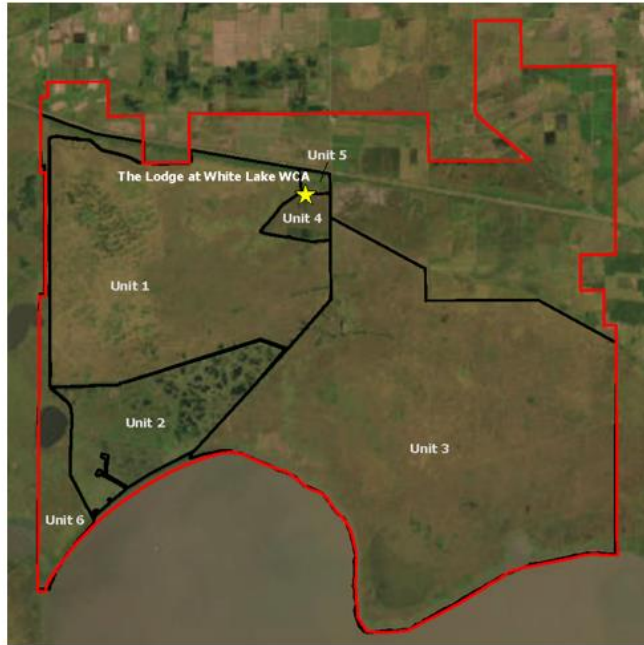
Install shoreline protection along the north White Lake shoreline at locations where the shoreline's edge is currently being diminished by erosive forces in order to reduce ongoing land loss and maintain the current shoreline.



TYPICAL WLSP SECTION VIEW



Prioritization Strategies



The prioritization phase is guided by criteria including:

- Current erosion rates and risk levels for each area
- The potential impact of each feature on protecting WLWCA's ecological integrity
- Feasibility and structural suitability of protection methods across different segments.

This phase identifies high-need areas to direct initial engineering and design resources.

ME-0040 PROJECT PHASE	START	FINISH
Project Feature Prioritization	<i>July 2024</i>	<i>Dec 2024</i>
Final Project Feature Selection	<i>Dec 2024</i>	<i>Jan 2025</i>
Data Collection	<i>March 2025</i>	<i>June 2025</i>
Engineering & Design	<i>March 2025</i>	<i>Dec 2025</i>
Bid Phase	<i>Jan 2026</i>	<i>March 2026</i>
Construction Start	<i>Q2 2026</i>	<i>--</i>



WHITE LAKE

WETLANDS CONSERVATION AREA

Louisiana Department of Wildlife and Fisheries

Comprehensive Master Plan Revision and Shoreline Protection Project



wlf.louisiana.gov
coastal.la.gov