



# Coastal Protection & Restoration Authority Board Meeting August 21, 2024

## Pontchartrain Levee District

Presented by:

**Monica Salins Gorman,  
Executive Director**

[mgorman@leveedistrict.org](mailto:mgorman@leveedistrict.org)

Website: [www.leveedistrict.org](http://www.leveedistrict.org)

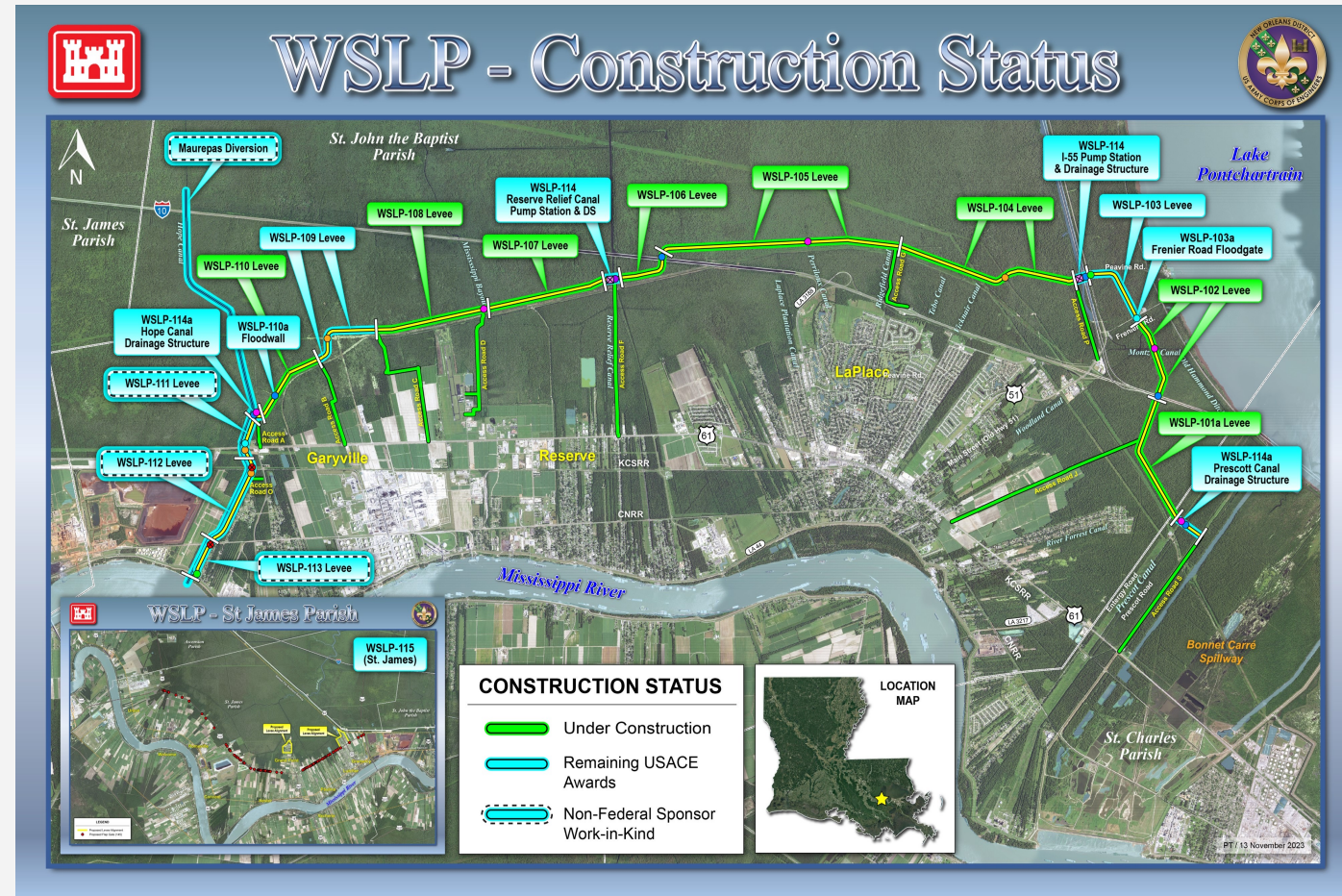




# West Shore Lake Pontchartrain- St. Charles/St. John the Baptist

Pontchartrain Levee District (PLD) and CPRA are proud to be Co-Non Federal Sponsors of the Number 1 USACE Civil Works project in the State of Louisiana.

- Project authorized in 1971
- Feasibility Study approved- December of 2014
- Final Chief's Report issued- June of 2015
- Funding allocation was part of the BBA-18 funding; overall cost of this WSLP HSDRRS system totals \$ 3.7 Billion
- One of the many roles of PLD as a Co-NFS and project partner has been the acquisition of 1400 acres of Right of Way for the project- namely roadway easements, drainage ditch easements, levee flood protection, stockpiling material and staging areas
- PLD and CPRA have issued AFE's for 13 construction contracts
- PLD has supported CPRA with over 20 pipeline operators to obtain approvals for project features to cross numerous pipeline corridors





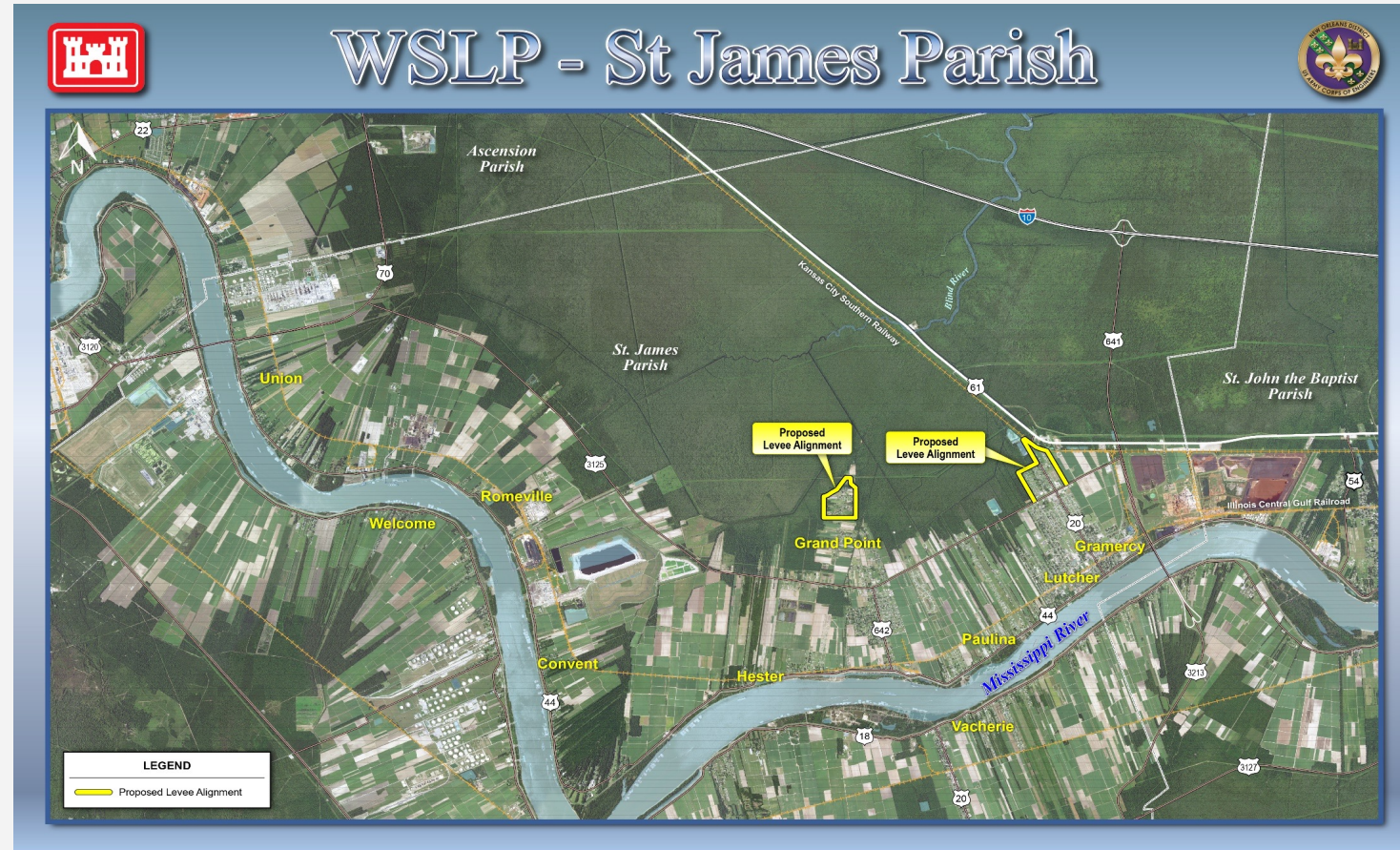


# West Shore Lake Pontchartrain-St. James Parish

PLD has the operation and maintenance of the WSLP HSDRRS, in perpetuity, once construction is complete

“There is a lot to be learned from this project which should serve as a model for how federal and non federal partners work together. How early investments tee up projects for success, and how strategic and outside-the-box thinking keeps things moving. “

This is Louisiana- it is how we come together, how we work together and how we thrive together.





COASTAL PROTECTION AND RESTORATION AUTHORITY

# WEST SHORE LAKE PONTCHARTRAIN

NON-FEDERAL UPDATE

ANDREW BEALL, CPRA CHIEF OF PROJECT MANAGEMENT



# WHO WE ARE WORKING WITH...



# TOTAL RELOCATIONS

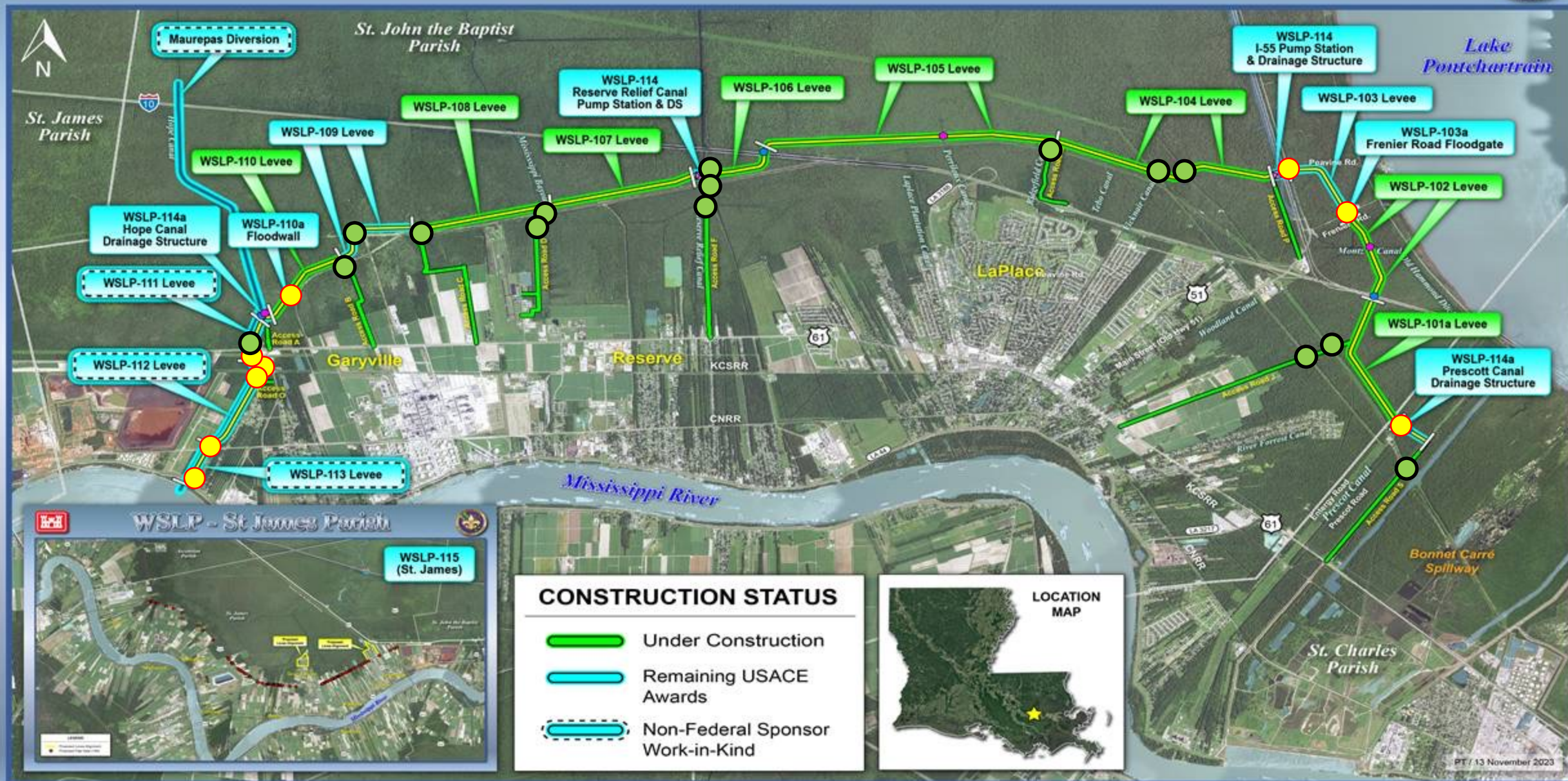
	PIPELINES	COMMUNICATIONS	UTILITIES	ENERGY TRANSMISSIONS	ENERGY DISTRIBUTION	TOTAL
ACCESS ROADS (8)	92 (92)	-	-	-	-	92 (92)
WSLP	24 (21)	17 (13)	1 (0)	3 (3)	4 (4)	49 (41)
WSLP / MAUREPAS	13 (6)	8 (0)	5 (0)	2 (2)	4 (4)	32 (12)
TOTAL	129 (119)	25 (13)	6 (0)	5 (5)	8 (8)	173 (145)

Total (**Completed**)





# WSLP - Construction Status





**CONNECT WITH US!**



***@LOUISIANACPRA***

