

Implementation Update

GLENN LEDET JR., PE, EXECUTIVE DIRECTOR



107 ACTIVE PROJECTS

42

60

5

<i>PROJECT TYPE</i>	CONSTRUCTION	E & D	PLANNING
HURRICANE PROTECTION (32)	17	11	4
MARSH CREATION (36)	10	26	
BANK STABLIZATION (1)		1	
RIDGE RESTORATION (2)		2	
SHORELINE PROTECTION (9)	6	3	
BARRIER ISLANDS/HEADLANDS (4)	1	3	
DIVERSIONS (3)	2	1	
HYDROLOGIC RESTORATION (7)	2	5	
OYSTER BARRIER REEF (0)			
RECREATIONAL USE (3)	2	1	
OTHER (9)	2	6	1

CONSTRUCTION AND E&D UPDATES



Cheniere Au Tigre Shoreline
Protection (TV-0096)



Hurricane Protection



Marsh Creation



Shoreline Protection



Bayou Cane
Marsh Creation
(PO-0181)



Bayou La Loutre Ridge
Restoration and Marsh
Creation (PO-0178)



Mid Breton Land Bridge
Marsh Creation and
Terracing (BS-0032)



Larose
Floodwall
(BA-0249)



0 5 10 20
Miles



CONSTRUCTION UPDATES

Larose Floodwall

- *Construction Completed*
- *Low Land Construction Co.*
- *Led by South Lafourche Levee District*
- *Est. Cost: \$2.1 Million*

Bayou La Loutre Ridge & Marsh Creation

- *Ridge Component Now in Construction*
- *Mike Hooks, LLC*
- *Est. Cost: \$35.4 Million*

Mid Breton Land Bridge Marsh Creation & Terracing

- *Coastal Dredging Company*
 - *Dredging began 7/24*
 - *Est. Cost: \$37.4 Million*



ENGINEERING & DESIGN UPDATES

Cheniere Au Tigre Shoreline Protection

- *To Be Bid in Next
6 Months*
- *Estimated Cost:
\$2.2 Million*

Bayou Cane Marsh Creation

- *Construction Permit
Issued*
- *Advertisement
scheduled for May
2025*
- *Estimated Cost: \$31.6
Million*

RESTORATION UPDATE

The background is a dark teal color with a white line-art illustration. The illustration depicts a large crane or derrick mounted on a barge or platform in a body of water. The crane's boom extends diagonally across the upper right portion of the image. In the foreground, there are smaller boats or barges with figures of people on them, suggesting a busy restoration or construction site. The water is represented by simple horizontal lines.



LABRANCHE EAST MARSH CREATION

St. Charles Parish

REGIONAL PROJECTS

FUNDING BY PROGRAM

CIAP

- \$6.5 million

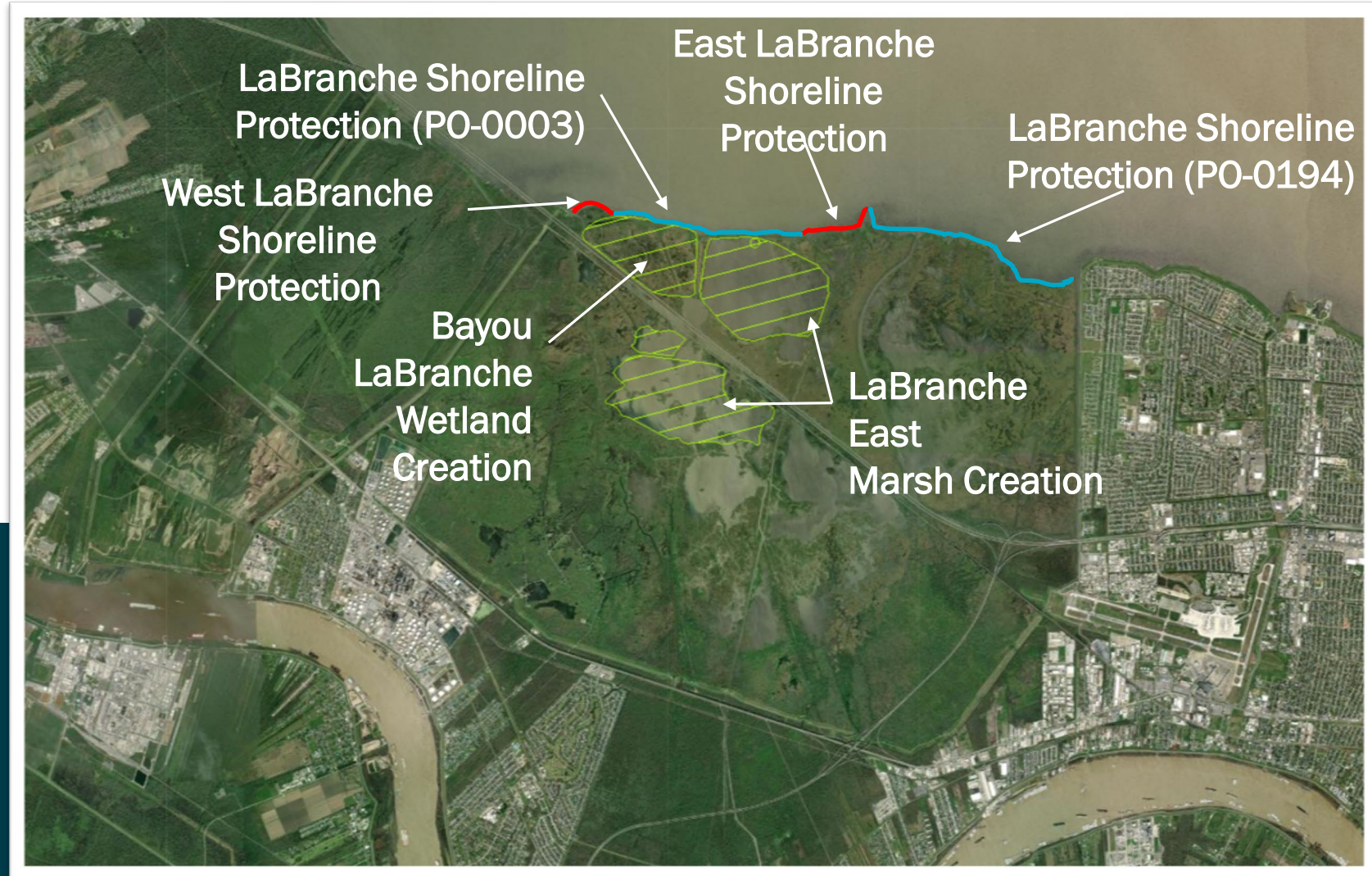
CWPPRA



- \$60.0 million

STATE

- \$21.3 million



Project Map



BORROW AREA



LAKE PONTCHARTRAIN

BONNET CARRE
SPILLWAY

MCA 1

MCA 3

MCA 2

725.5 ACRES

75.6 ACRES

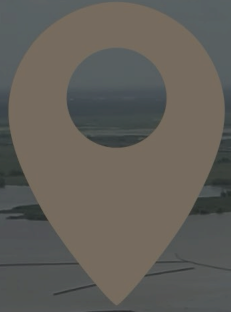
670.1 ACRES

Legend

- MC_CELL_ONE_9_23
- MC_CELL_TWO_9_23
- MC_CELL_THREE_9_23
- TIDAL_PONDS_9_23
- TIDAL_CREEKS_9_23
- BORROW_AREA_9_23

2021 NAIP CIR IMAGERY

0 2,600 5,200
Feet



LABRANCHE EAST
MARSH CREATION
ST. CHARLES PARISH

VIDEO



LABRANCHE EAST MARSH CREATION

St. Charles Parish



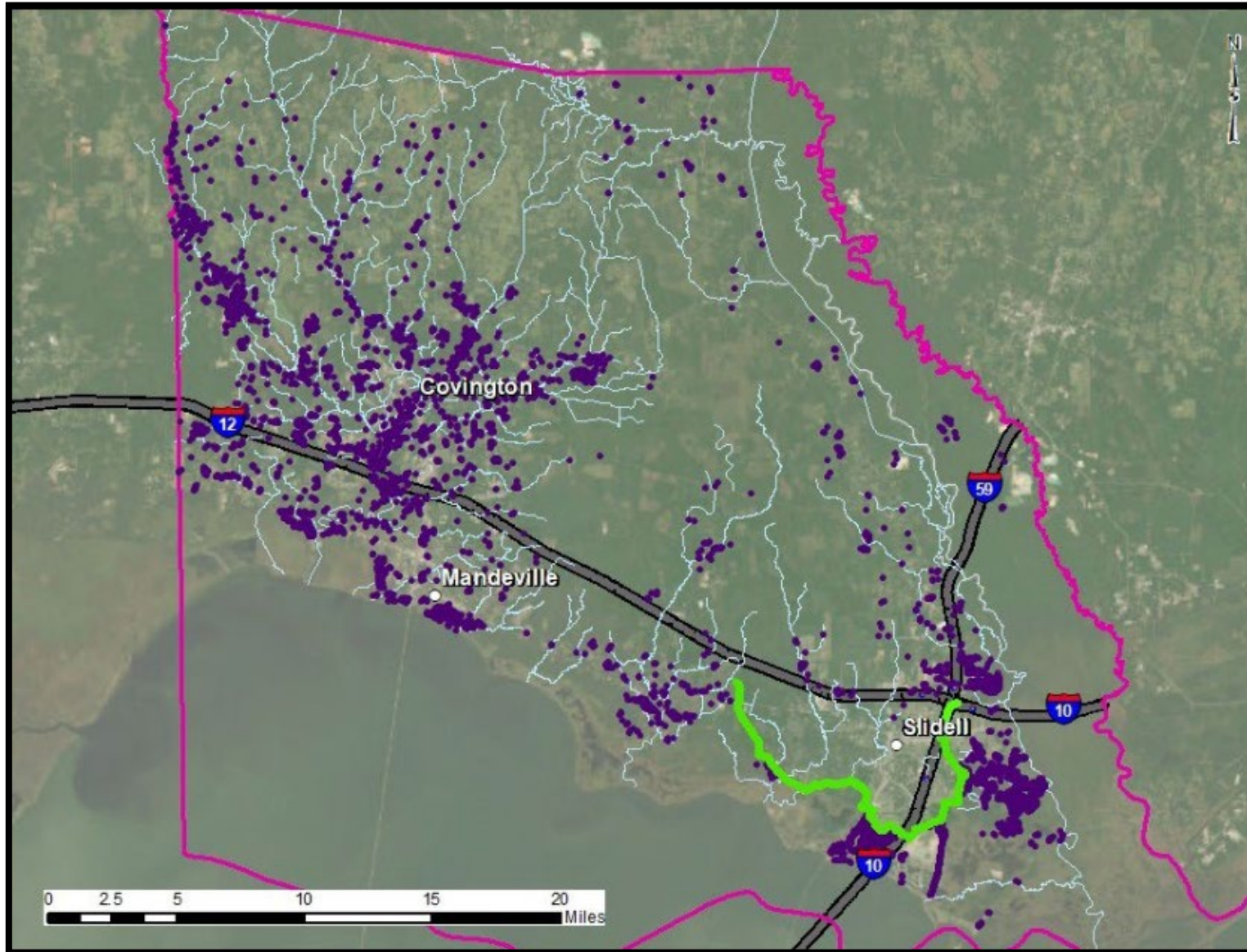
Hurricane Protection & Flood Risk Reduction


A faint, light blue background logo is centered behind the text. It depicts a coastal scene with palm trees on the left and a building with a gabled roof on the right, all enclosed within a circular frame.



ST. TAMMANY PARISH FLOOD RISK REDUCTION

St. Tammany Parish



 - 18.5 Mile
South Slidell and West
Slidell Levee and
Floodwall System

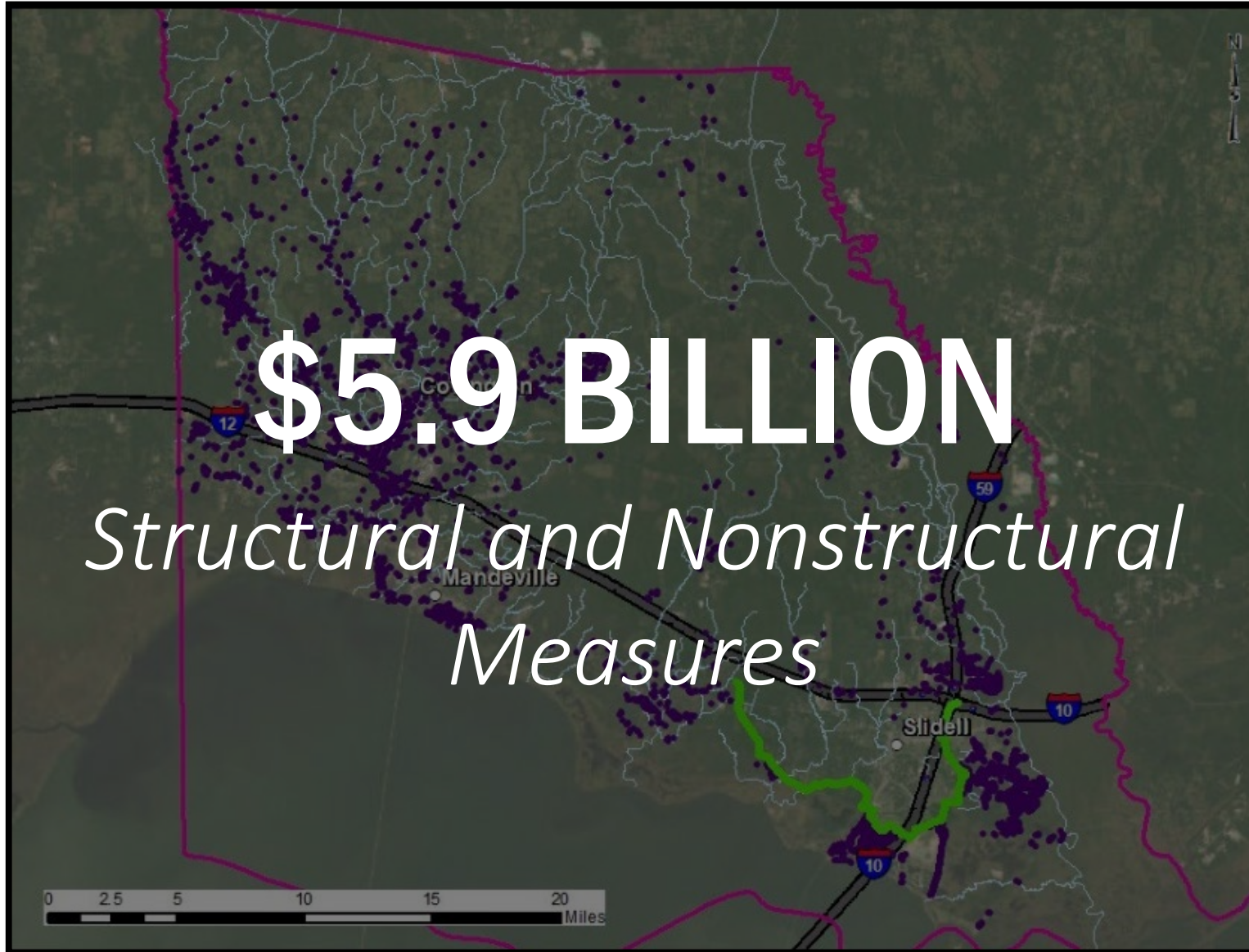
 Non-structural
Plan






ST. TAMMANY PARISH FLOOD RISK REDUCTION

St. Tammany Parish



\$5.9 BILLION

*Structural and Nonstructural
Measures*

 - 18.5 Mile
South Slidell and West
Slidell Levee and
Floodwall System

 Non-structural
Plan





ST. TAMMANY PARISH FLOOD RISK REDUCTION

St. Tammany Parish

STRUCTURAL FEATURES:

- **15-mile** earthen levee
- **3.5-mile** floodwall system
- **8** pump stations
- **13** sluice gates/lift gates
- **18** vehicular gates
- **1** pedestrian floodgate
- **1** railroad gate
- **6** road ramps
- Raising of the I-10 road surface

NONSTRUCTURAL FEATURES:

- Elevation of **5,583** preliminarily eligible residential structure
- Dry floodproofing of **827** non-residential structures

Once completed, the project would provide **flood risk reduction** to more than **26 thousand structures**.

GRAND ISLE BEACH & DUNE RESTORATION

Jefferson Parish



VIDEO





ADDITIONAL CPRA UPDATES

SEPTEMBER

2024

SUNDAY

MONDAY

TUESDAY

WEDNESDAY

THURSDAY

FRIDAY

SATURDAY

AUG 25

26



27



28

29

30

31

1

2

3

4



5

6

7

8

9



10

11

12

13

14

15

16

17

18

19

20

21

22

23

24

25

26

27

28 | 29 | 30

SEPTEMBER

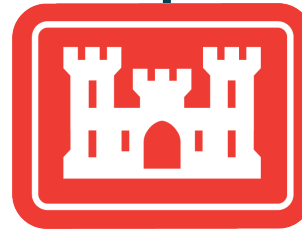
2024

TANGIPAHOA PARISH FEASIBILITY STUDY PUBLIC MEETINGS

TUESDAY, AUGUST 27TH

2 P.M. AND 6 P.M.

*Tangipahoa Parish Government Building
15485 West Club Deluxe Road
Hammond, La. 70403*



WEDNESDAY, AUGUST 28TH

6 P.M.

*Ponchatoula Community Center
300 North 5th Street
Ponchatoula, La. 70454*

SEPTEMBER

2024

CWPPRA TECHNICAL COMMITTEE MEETING

THURSDAY, SEPTEMBER 5TH

9:30 A.M. – 12:30 P.M.

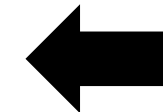
*Tulane River and Coastal Center
1370 Port of New Orleans
New Orleans, LA 70130*



VIRTUAL COMPONENT

USA Toll-Free: 844-800-2712

Access Code: 2761 432 2324



**SCAN FOR
WEBEX**

SEPTEMBER

2024



AMITE RIVER BASIN COMMISSION REGULAR MEETING

TUESDAY, SEPTEMBER 10TH

10:00 A.M.

*Louisiana State Capital
Meeting Room TBD*

\$37+ MILLION

GRANTS FOR LOUISIANA COASTAL PROJECTS



\$25.5 M

Implementing the final phase of the System Wide Assessment and Monitoring Program (SWAMP)

*Gulf Coast Ecosystem Restoration Council
(RESTORE Council)*

\$10 M

Chandeleur Islands Restoration Project

*National Oceanic and Atmospheric
Administration's Transformational
Habitat Restoration and Coastal
Resilience*



\$2.4 M

The GulfCorps Resilience Collaborative
in Louisiana

*National Oceanic and Atmospheric
Administration's Transformational
Habitat Restoration and Coastal
Resilience*

WYES COASTAL EXPO

Challenges & Opportunities: The Louisiana Coast, An Ongoing Series



WEST CLOSURE COMPLEX TOUR

PACE and Sen. Cassidy's Office

PICTURES COMING
SOON

HNC LOCK COMPLEX

Groundbreaking for Phase 2 Construction



CONNECT WITH US!



@LOUISIANACPRA

