

Implementation Update

GLENN LEDET JR., PE, EXECUTIVE DIRECTOR



107 ACTIVE PROJECTS

43

59

5

<i>PROJECT TYPE</i>	CONSTRUCTION	E & D	PLANNING
HURRICANE PROTECTION (33)	18	11	4
MARSH CREATION (36)	10	26	
BANK STABLIZATION (1)		1	
RIDGE RESTORATION (2)		2	
SHORELINE PROTECTION (9)	6	3	
BARRIER ISLANDS/HEADLANDS (4)	1	3	
DIVERSIONS (3)	2	1	
HYDROLOGIC RESTORATION (7)	2	5	
OYSTER BARRIER REEF (0)			
RECREATIONAL USE (3)	2	1	
OTHER (8)	2	5	1



RIVER REINTRODUCTION INTO MAUREPAS SWAMP

**1ST CONSTRUCTION
CONTRACT AWARDED**





CONSTRUCTION UPDATES

No Name Bayou Marsh Creation

- *Now In Construction*
- *Mike Hooks, LLC*
- *Estimated Cost:
\$14.7 Million*

Ludevine Pump Station

- *Now In Construction*
- *Sea Level Construction*
- *Estimated Cost:
\$7 Million*

Southwest Coastal: Coastal Storm Risk Management

- *Headed to construction*
- *Awarded to Wingate
Engineers, LLC*
- *Estimated Cost:
\$4.998M*

Cameron Gulf Shoreline Protection

- *To Be Bid in the next 6
months*

Bayou Pigeon Boat Launch

- *To Be Bid in the next 2
months*



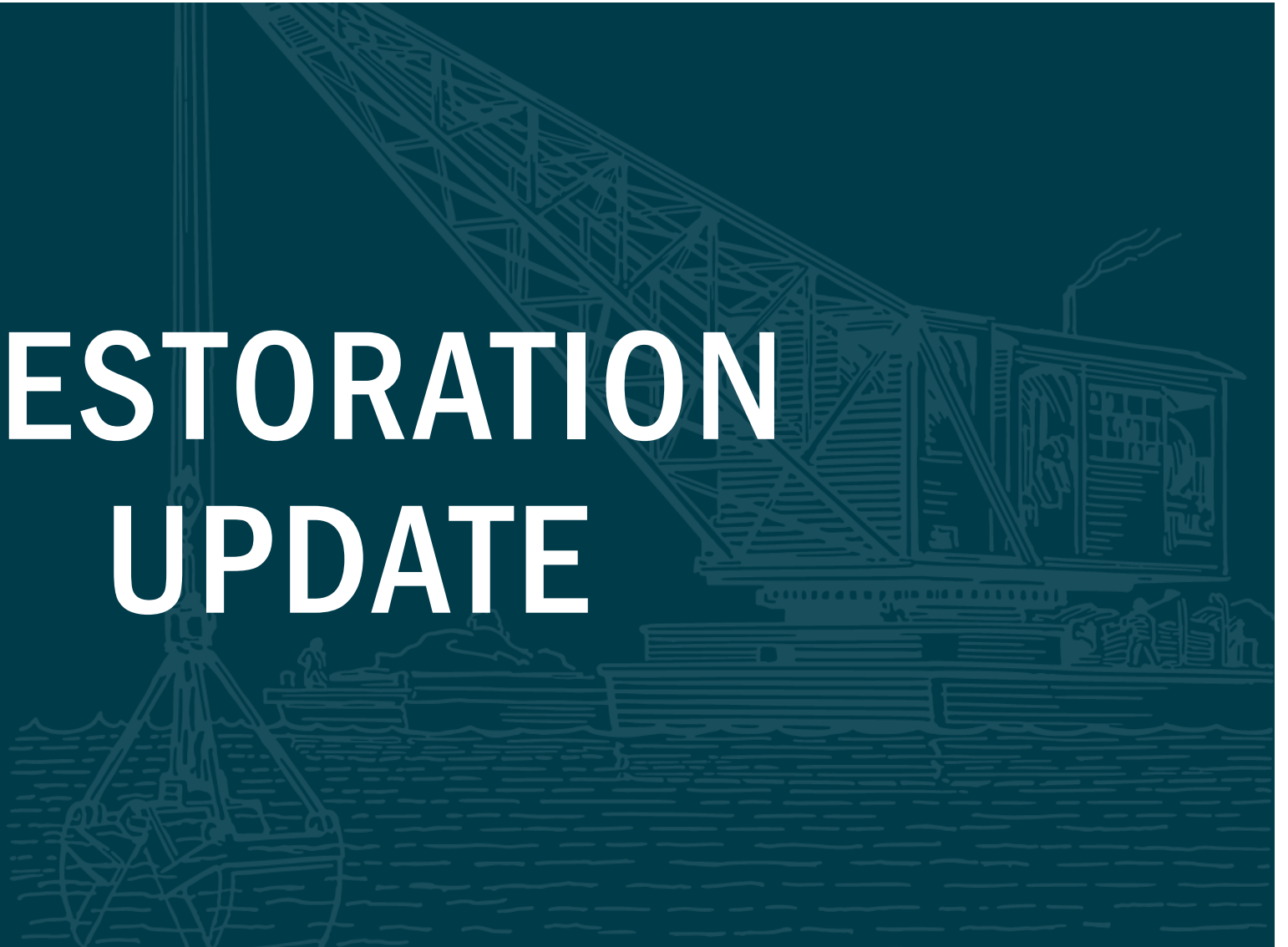
ENGINEERING & DESIGN UPDATES



Bird's Foot Delta Hydrologic Restoration

- *Project is undergoing alternative analysis at this time.*
- *Project team is meeting with stakeholders to receive input on the alternatives before a preferred alternative is selected. This includes the USACE and MS River Navigation interests.*
- *Project design is to increase riverine flow to the Eastern Bird's Foot Delta so the crevasses and passes can build land naturally.*

RESTORATION UPDATE





GRAND ISLE DUNE AND BEACH CONSTRUCTION

Jefferson Parish



GRAND ISLE DUNE AND BEACH CONSTRUCTION

Jefferson Parish

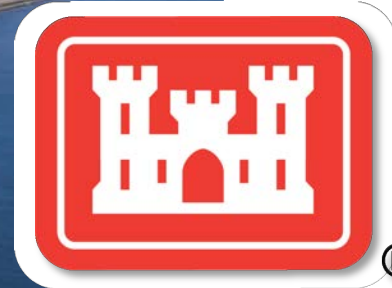




GRAND ISLE SEGMENTED BREAKWATERS UPDATE

Jefferson Parish

- *Completing Segmented Breakwaters on the Gulf Shoreline of Grand Isle*
- *WRDA 2022*
- *CPRA providing engineering recommendations to USACE*
 - *Provided to USACE for Project Information Report for authorization of the Flood Control and Coastal Emergencies funding*





LAKE BORGNE MARSH CREATION

St. Bernard Parish



LAKE BORGNE MARSH CREATION

St. Bernard Parish

LARGEST-EVER MARSH CREATION PROJECT

By Acreage

3,180 ACRES





LAKE BORGNE MARSH CREATION

St. Bernard Parish



\$114.6M



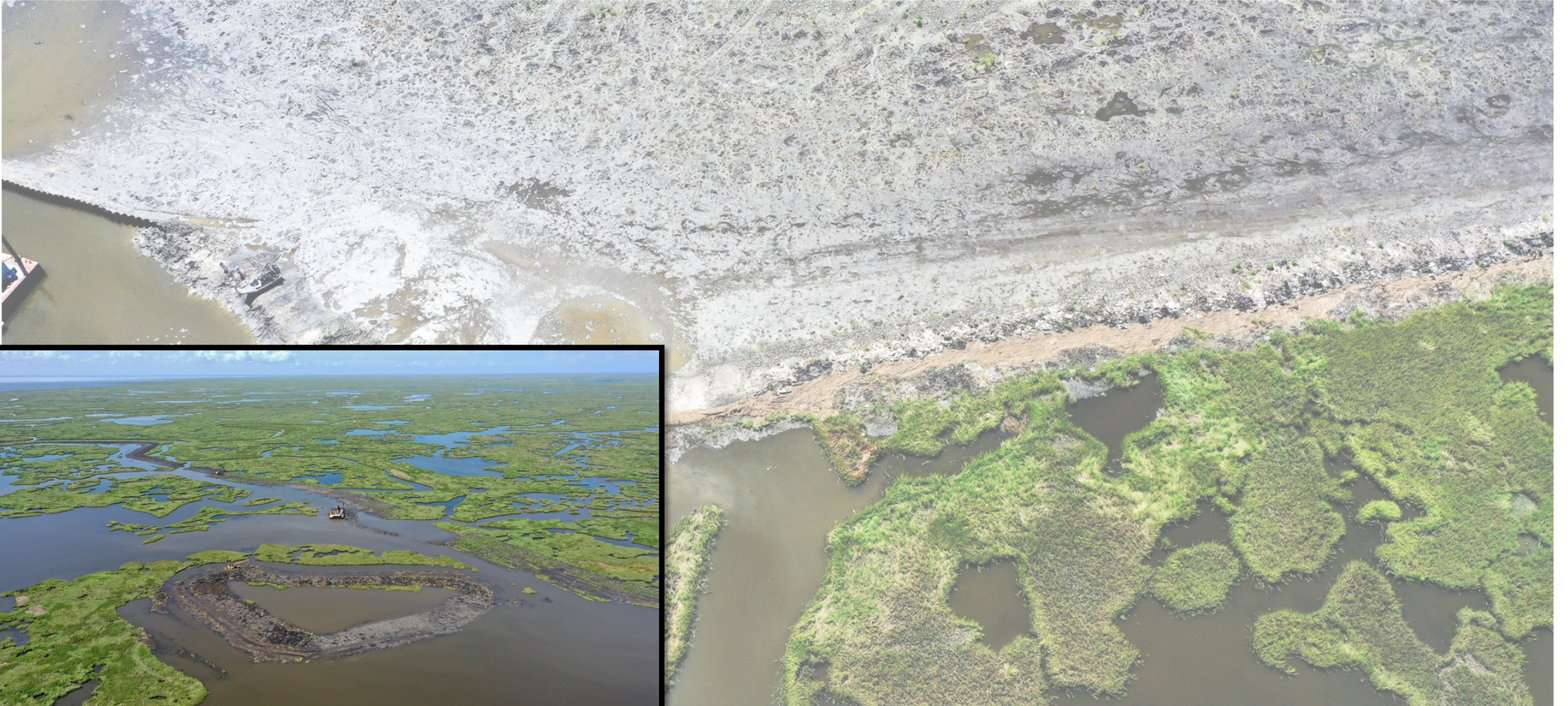
NRDA

Natural Resource Damage Assessment



LAKE BORGNE MARSH CREATION

St. Bernard Parish





LAKE BORGNE MARSH CREATION

St. Bernard Parish



VIDEO



LAKE BORGNE MARSH CREATION

St. Bernard Parish



LAKE BORGNE MARSH CREATION

St. Bernard Parish





MISSISSIPPI RIVER REINTRODUCTION INTO BAYOU LAFOURCHE

Ascension, Assumption, Lafourche, and Terrebonne Parishes

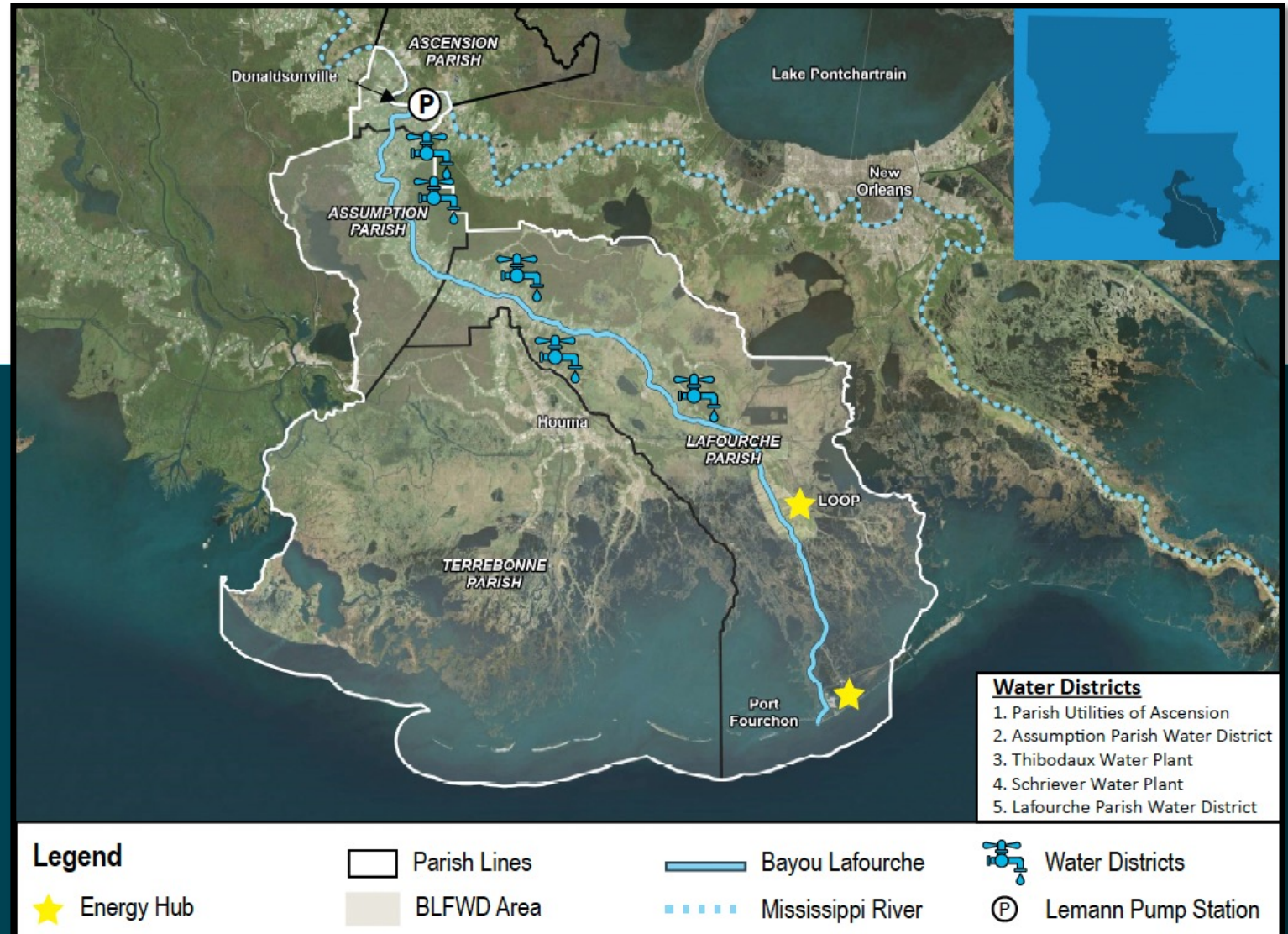


MISS. RIVER REINTRODUCTION INTO BAYOU LAFOURCHE

Ascension, Assumption, Lafourche, and Terrebonne Parishes

MRRBL Overview

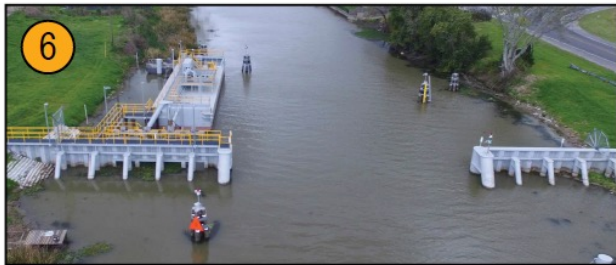
The MRRBL Program was the outcome of a comprehensive study completed in 2005, which recommended improvements to ensure a long term supply of fresh water to the Bayou Region. The program is included in CPRA's 2023 Coastal Master Plan as a measure to combat saltwater intrusion in the Barataria and Terrebonne Basins.





MISS. RIVER REINTRODUCTION INTO BAYOU LAFOURCHE

Ascension, Assumption, Lafourche, and Terrebonne Parishes



PROJECTS

1. MRRBL Pump Station Improvements
2. Union Pacific Railroad Crossing
3. N. Bayou Lafourche Control Structure
4. Assumption Parish Pedestrian Bridge
5. Thibodaux Weir Removal
6. Lockport Salinity Control Structure
7. Upper Bayou Lafourche Dredging
8. Lower Bayou Lafourche Dredging

Legend

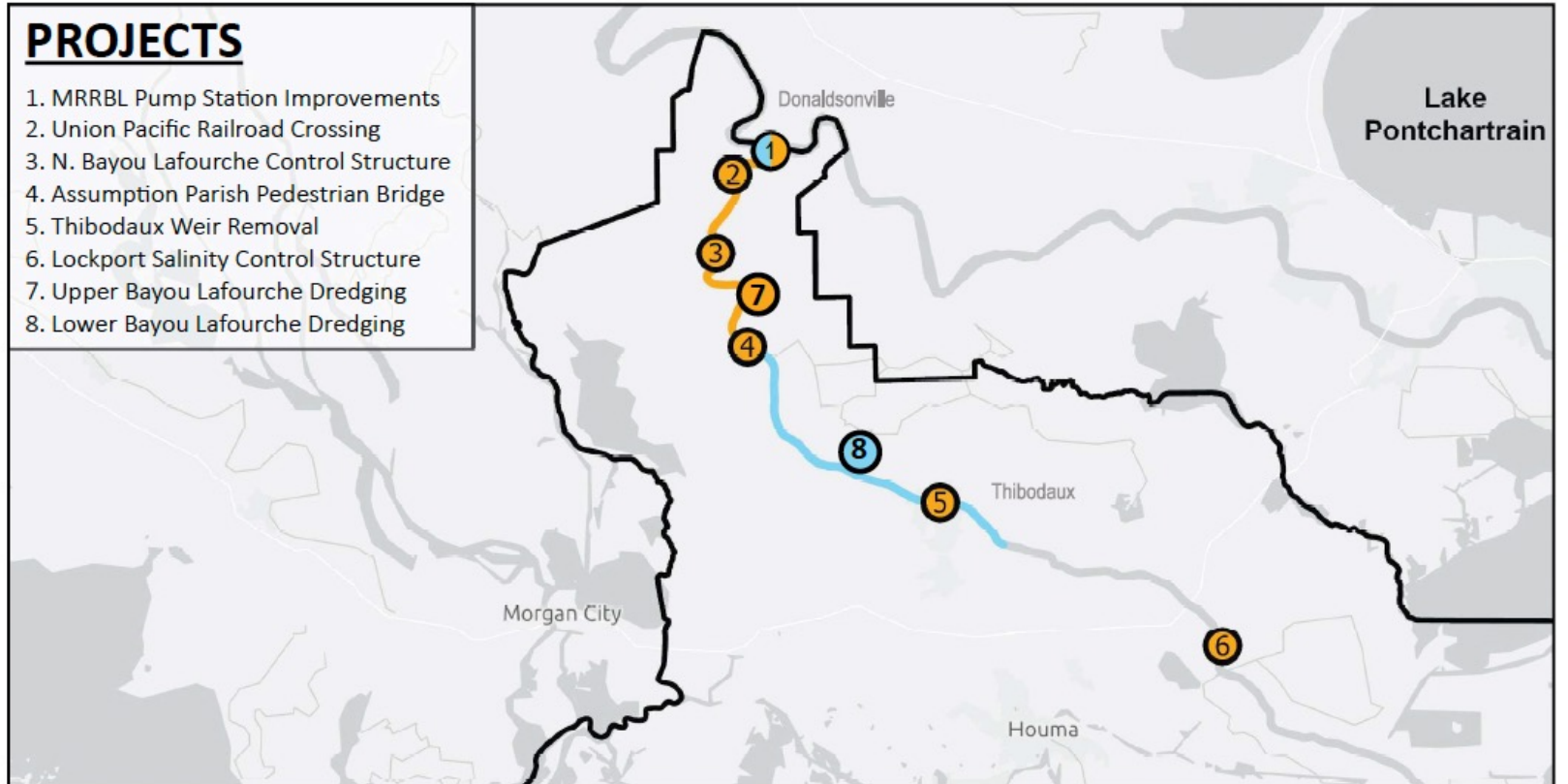
BLFWD Area

Projects Completed & In Progress

Projects Remaining

Completed Dredging

Dredging Remaining





MISS. RIVER REINTRODUCTION INTO BAYOU LAFOURCHE

Ascension, Assumption, Lafourche, and Terrebonne Parishes

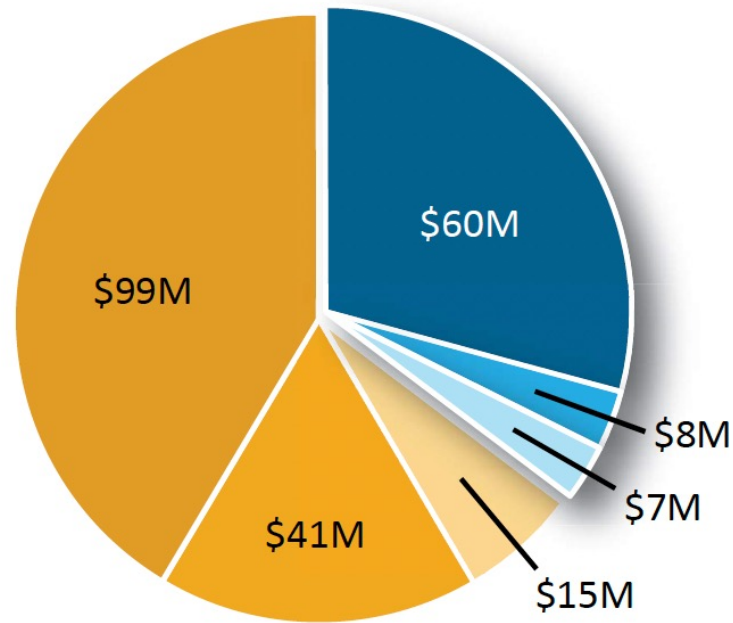
MRRBL Program Costs

\$230,000,000 Total

Completed & In Progress

\$155M (65%)

- Hydraulic Improvements @ Mississippi River
- Dredging within Upper Bayou Lafourche
- Structural Improvements along Bayou Lafourche



Work Remaining

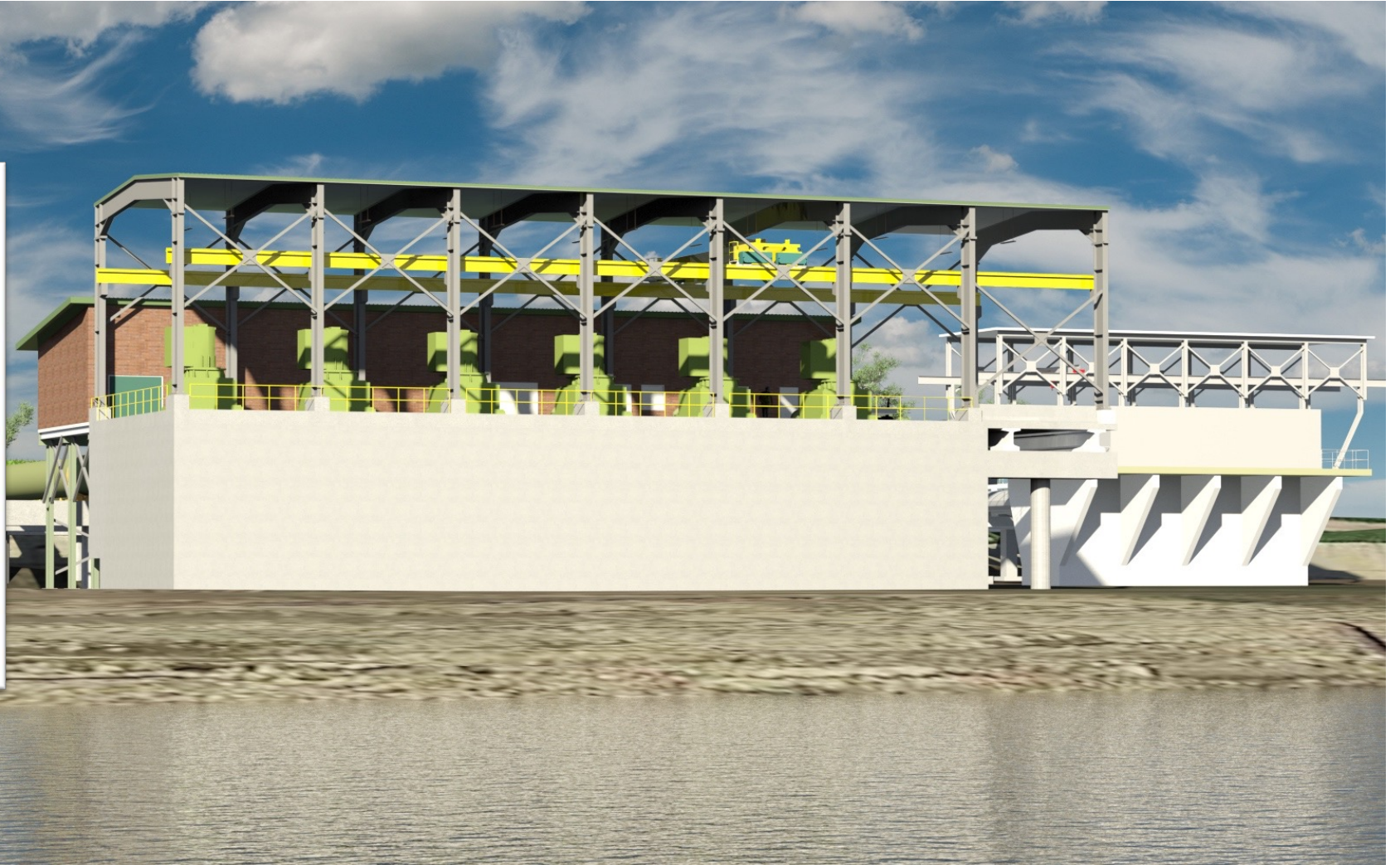
\$75M (35%)

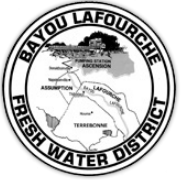
- Dredging within Lower Bayou Lafourche
- Sediment Trap @ Pump Station Outfall
- Additional Pumps and Generators



BAYOU LAFOURCHE: PUMPING CAPACITY IMPROVEMENTS

Ascension, Assumption, Lafourche, and Terrebonne Parishes

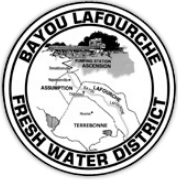




BAYOU LAFOURCHE: PUMPING CAPACITY IMPROVEMENTS

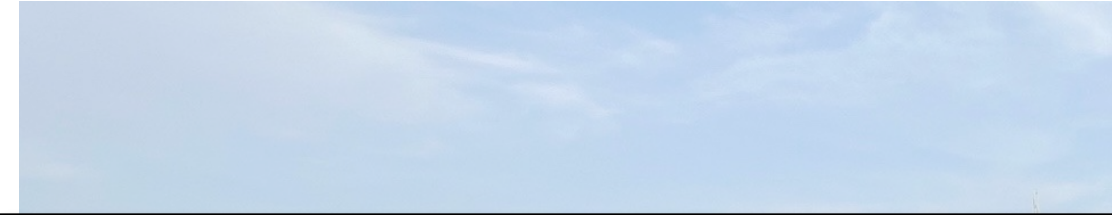
Ascension, Assumption, Lafourche, and Terrebonne Parishes

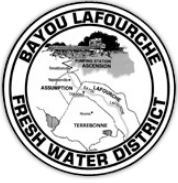




BAYOU LAFOURCHE: PUMPING CAPACITY IMPROVEMENTS

Ascension, Assumption, Lafourche, and Terrebonne Parishes





BAYOU LAFOURCHE: PUMPING CAPACITY IMPROVEMENTS

Ascension, Assumption, Lafourche, and Terrebonne Parishes

216+ JOBS

*NOT INCLUDING
GOVERNMENT WORKERS*



Cavu



Baird.

Pat Grabert
Plumbing

PND



B2 Refrigeration

DACP
Construction



ADDITIONAL CPRA UPDATES

MANDELA WASHINGTON FELLOWSHIP PROGRAM FOR YOUNG AFRICAN LEADERS – *LSU Center for River Studies*

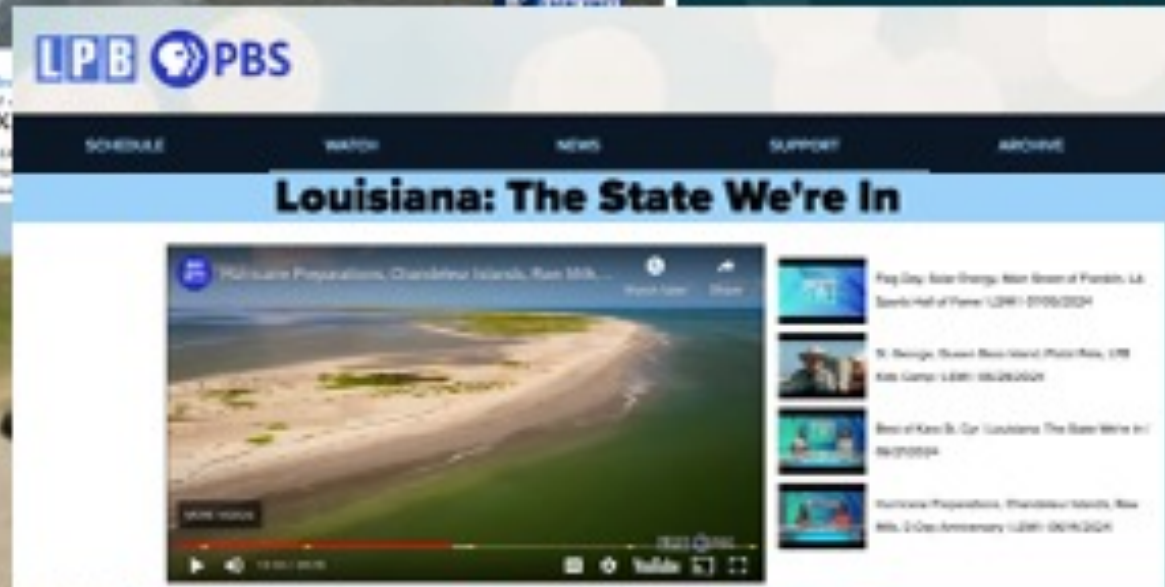
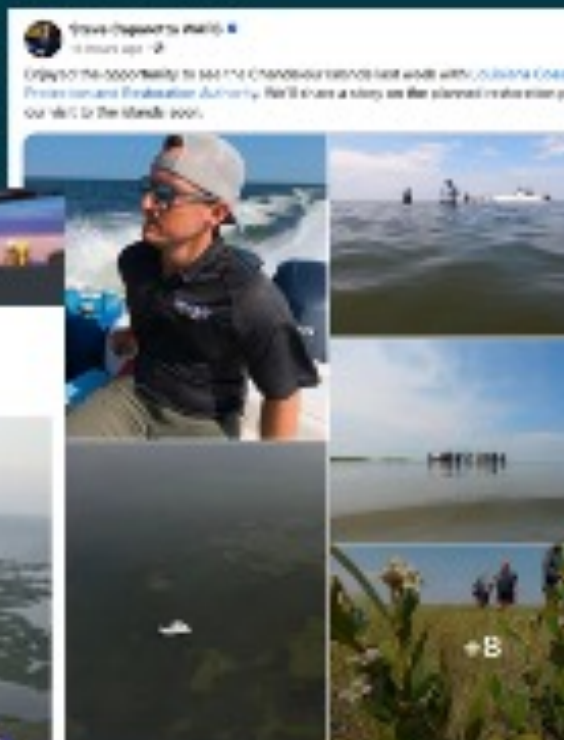


LOUISIANA GOVERNOR'S FELLOWS PROGRAM–

LSU Center for River Studies



CHANDELEUR ISLANDS – Summer Site Visits



CONNECT WITH US!



@LOUISIANACPRA

