

Implementation Update

GLENN LEDET JR., PE, EXECUTIVE DIRECTOR



109 ACTIVE PROJECTS

44

59

5

| <i>PROJECT TYPE</i> | CONSTRUCTION | E & D | PLANNING |
|-------------------------------|--------------|-------|----------|
| HURRICANE PROTECTION (33) | 19 | 10 | 4 |
| MARSH CREATION (36) | 10 | 26 | |
| BANK STABLIZATION (1) | | 1 | |
| RIDGE RESTORATION (3) | | 3 | |
| SHORELINE PROTECTION (9) | 6 | 3 | |
| BARRIER ISLANDS/HEADLANDS (4) | 1 | 3 | |
| DIVERSIONS (4) | 2 | 2 | |
| HYDROLOGIC RESTORATION (7) | 2 | 5 | |
| OYSTER BARRIER REEF (0) | | | |
| RECREATIONAL USE (3) | 2 | 1 | |
| OTHER (9) | 2 | 6 | 1 |



CONSTRUCTION UPDATES

River Reintroduction Into Maurepas Swamp

- *Reach 6 advertised for construction*
- *Bids opening May 29th, 2024*

Rosethorn Tidal Protection – Phase 2

- *Notice to proceed issued*
- *Construction beginning soon*

Grand Bayou Ridge and Marsh Creation

- *Bids opened on April 24, 2024*
- *Bids currently under review*

Terrebonne HNC Bird Island Restoration

- *Bids opened on March 27, 2024*
- *Bid Award Routed For Approval*

Bayou La Loutre Ridge Restoration & Marsh Creation

- *Bid Awarded on April 15, 2024*



ENGINEERING & DESIGN UPDATES

Central Wetlands Hydrologic Restoration

- *Engineering & Design underway*
- *Two community charettes held*

Irish Bayou Living Shoreline

- *Engineering & design process beginning this month*



SHORELINE PROTECTION & RESTORATION



BUCKTOWN LIVING SHORELINE PROTECTION

Jefferson Parish



BUCKTOWN LIVING SHORELINE PROTECTION

Jefferson Parish





BUCKTOWN LIVING SHORELINE PROTECTION

Jefferson Parish



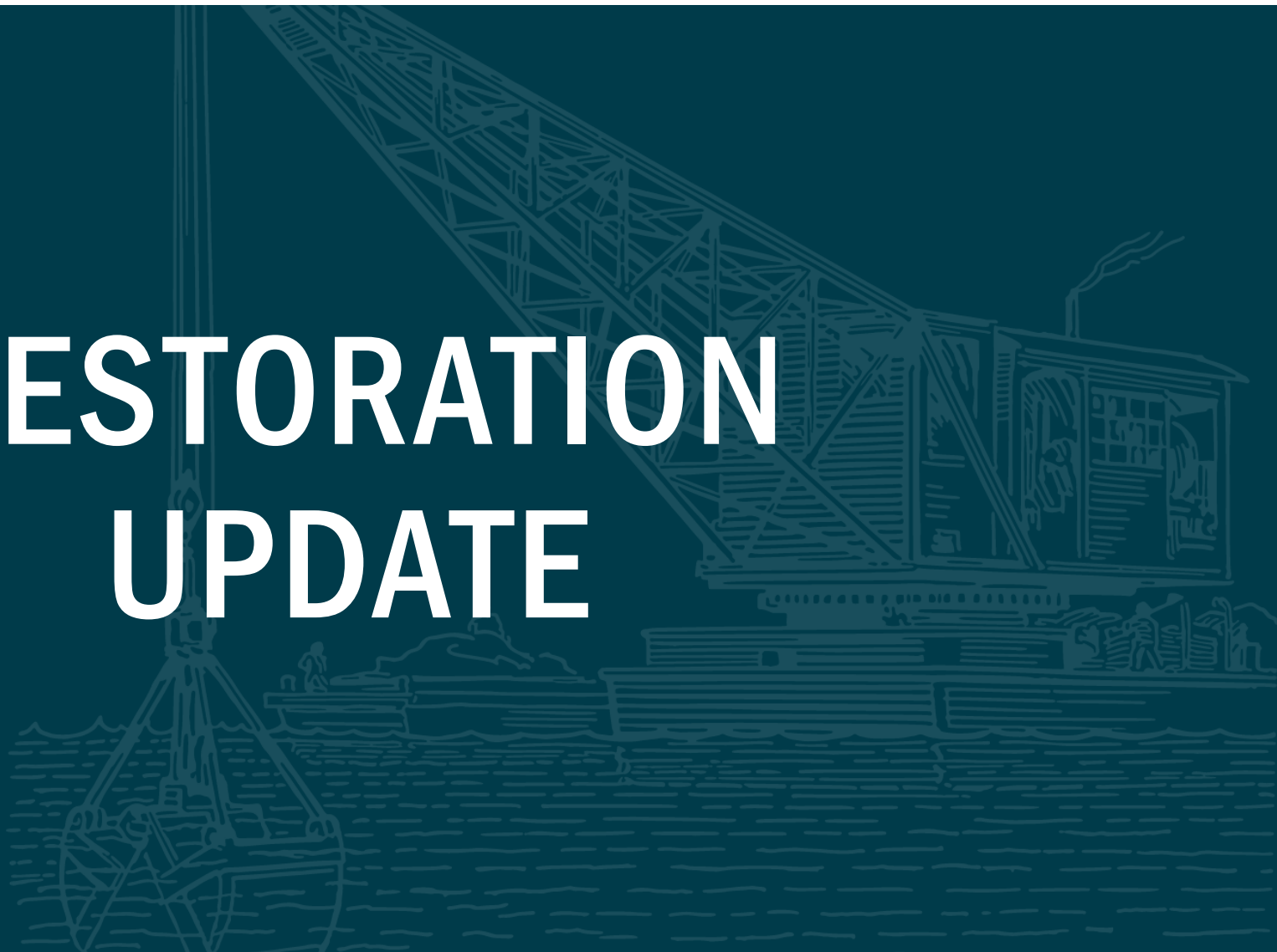


BUCKTOWN LIVING SHORELINE PROTECTION

Jefferson Parish



RESTORATION UPDATE





MID-BRETON LANDBRIDGE MARSH CREATION

Plaquemines Parish



MID-BRETON LANDBRIDGE MARSH CREATION

Plaquemines Parish

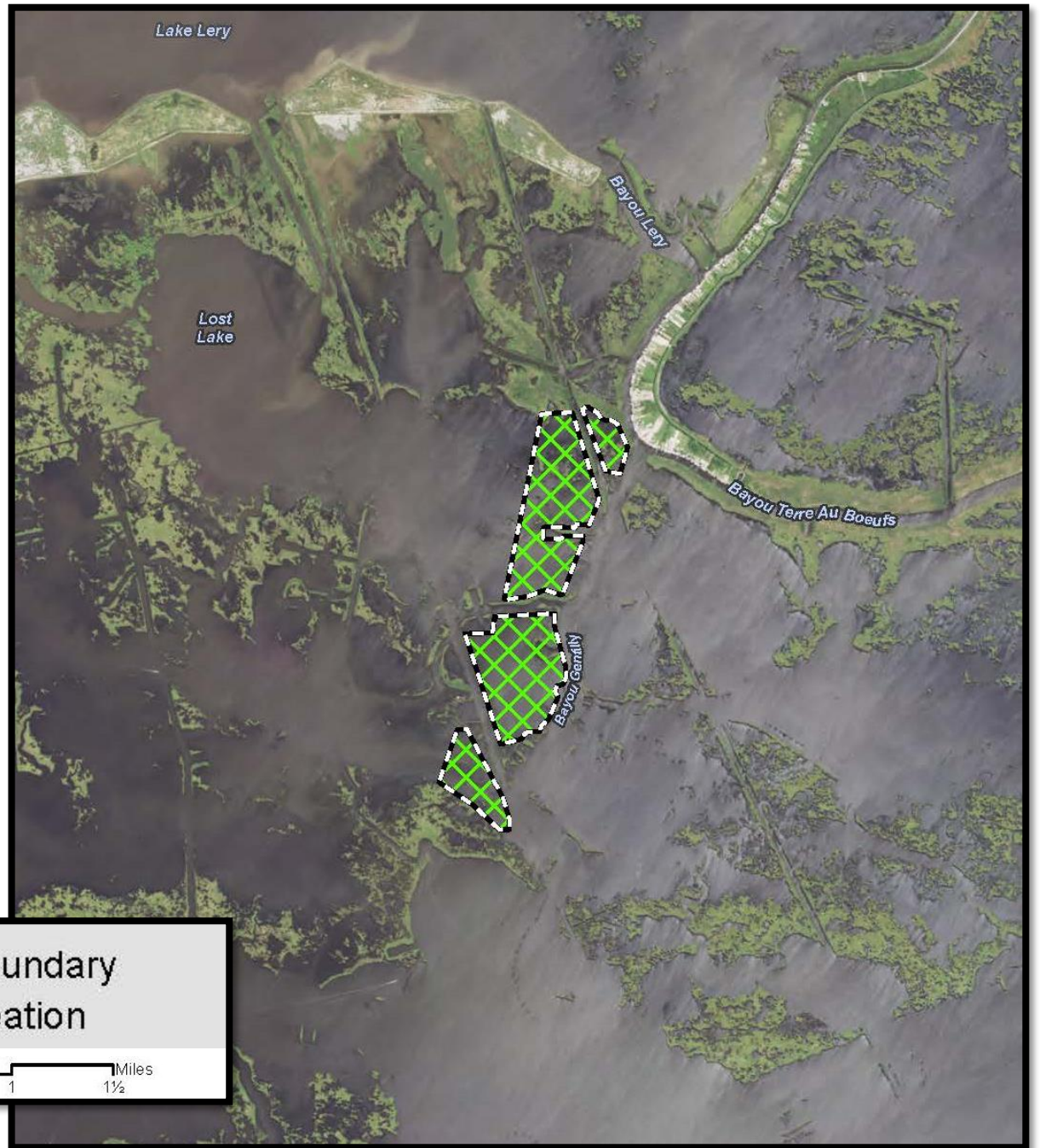
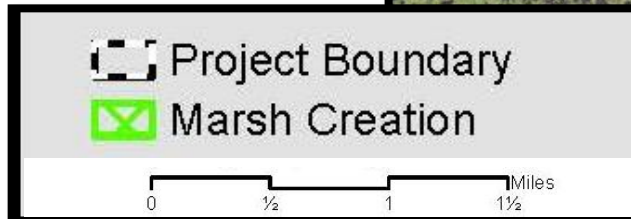


\$34 MILLION

CWPPRA Phase 2 Project



*Federal Sponsor:
U.S. Fish and Wildlife
Service*





MID-BRETON LANDBRIDGE MARSH CREATION

Plaquemines Parish



373 ACRES

*of new marsh in
Plaquemines Parish*



2,423,910 y³

*of sediment dredged
from Lake Lery*



An aerial photograph showing a large, flat-topped barge or pontoon floating on a wide river. The barge is equipped with various pieces of machinery, including a large white cylindrical tank, a yellow excavator, and other equipment. The river is surrounded by lush green marshland with tall grasses and small islands. The water is a mix of blue and brown, indicating some sediment. The overall scene depicts a large-scale engineering or construction project in a natural environment.

VIDEO

MID-BRETON LANDBRIDGE MARSH CREATION



MID-BRETON LANDBRIDGE MARSH CREATION

Plaquemines Parish





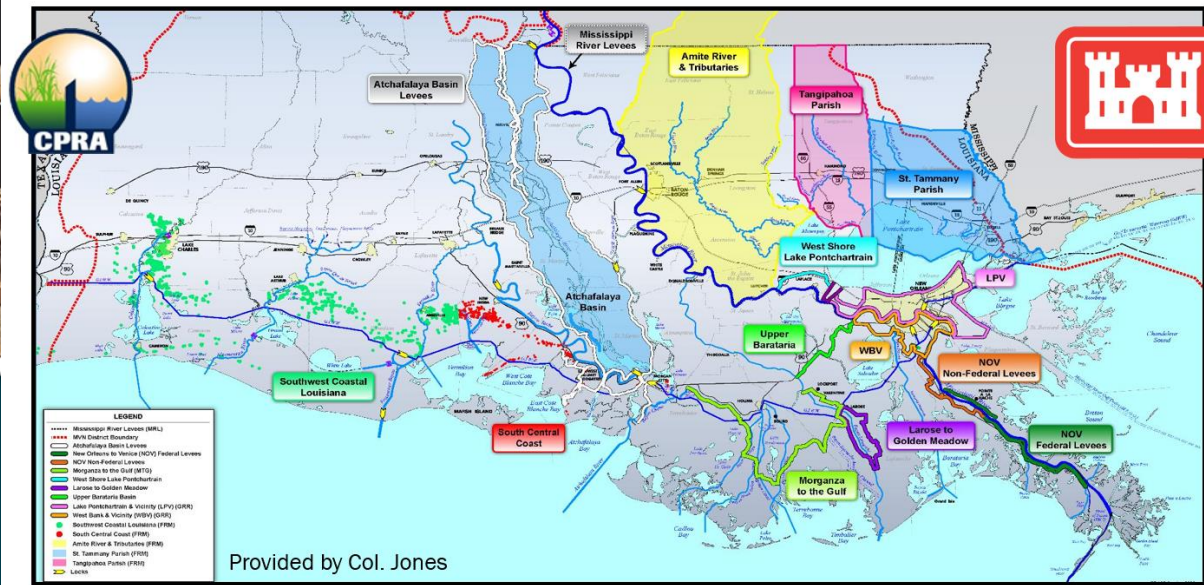
ADDITIONAL CPRA UPDATES

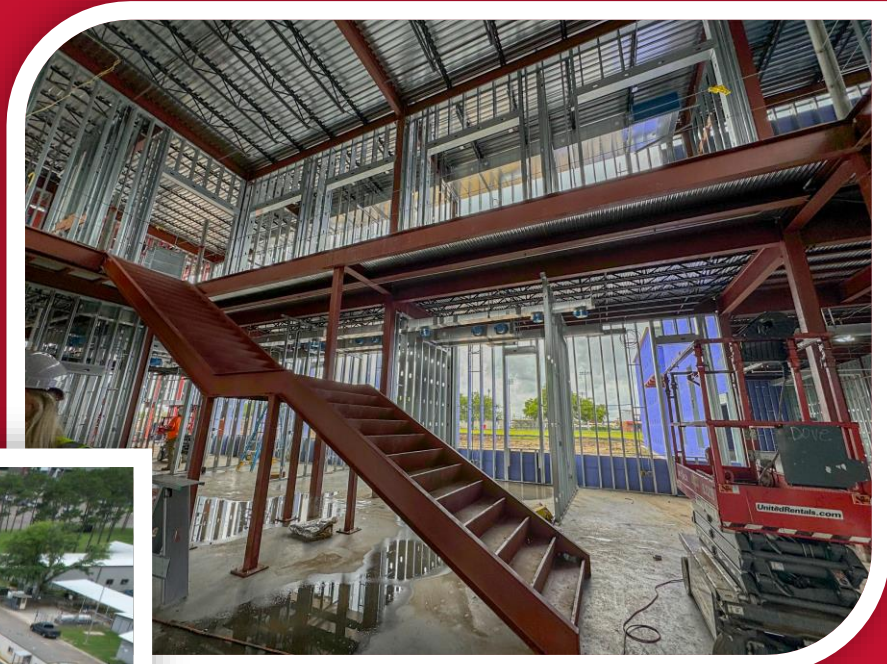
Coastal Program Update at ALBL

Association of Levee Boards of Louisiana



Flood Risk Reduction & Resilience *In Coastal LA*





Nicholls' Coastal Center Progress

LaBranche Dedication



2024 Coastal Stewardship Awards

*Congratulations to
Kenneth Bahlinger
and the 2023
Coastal Master
Plan Team!*



Love the Boot Week

CPRA Litter Pick Up





CONGRESSIONAL FLY-IN

SAVE THE DATE

JUNE 11-13, 2024

WASHINGTON, D.C.

Join us in June to advocate in our nation's capital as part of Sharing Offshore Revenues from Energy Resources (SHORES). The SHORES coalition is building momentum and support for the revenue sharing legislation which is essential for the future of our coastal states, communities, and ecosystems.

RSVP TO NEAL.MCMILLIN@LA.GOV

CONNECT WITH US!



@LOUISIANACPRA

