

# COASTAL PROTECTION AND RESTORATION AUTHORITY BOARD

U.S. ARMY CORPS OF ENGINEERS  
NEW ORLEANS DISTRICT UPDATE

COL Cullen Jones, P.E., PMP  
Commander  
15 May 2024



U.S. ARMY



US Army Corps  
of Engineers®





U.S. ARMY



US Army Corps  
of Engineers®



# 2024 HURRICANE RESPONSE PLAN



U.S. ARMY



US Army Corps of Engineers®



# Authorities and Programs



**Public Law 84-99**  
 ( Flood Control Act of 1941 )  
 Disaster Preparation  
 Emergency Operations  
 Rehabilitation  
 Water Assistance  
 Advance Measures  
 Hazard Mitigation

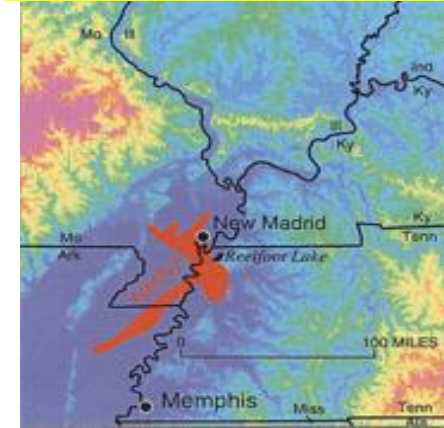


**Civil Works Authorities**  
 Reservoir Operations  
 Dam / Lock Operations



**PL 93-288 - Stafford Act**  
 ( National Response Framework )  
 Disaster Preparation / Execution  
 Coordinating Agency ESF #3  
 .....  
 Public Works and Engineering  
 Primary Agency ESF #3  
 Support Agency ESF #6, ESF #9  
 •ESF #14 (Moving to NDRF/NMF)  
  
 Presidential Policy Directive #8  
 National Disaster Recovery Framework  
 National Mitigation Framework

Shaken Fury June 2019



**NEPP**  
 (Executive Orders 10480, 12656, and other acts)  
 Man-made Disaster /Terrorism Preparation & Response  
 Catastrophic Disaster Planning and Exercises  
 Continuity of Government

**Field Force Engineering (FFE)**  
 Support to Military Contingency Operations







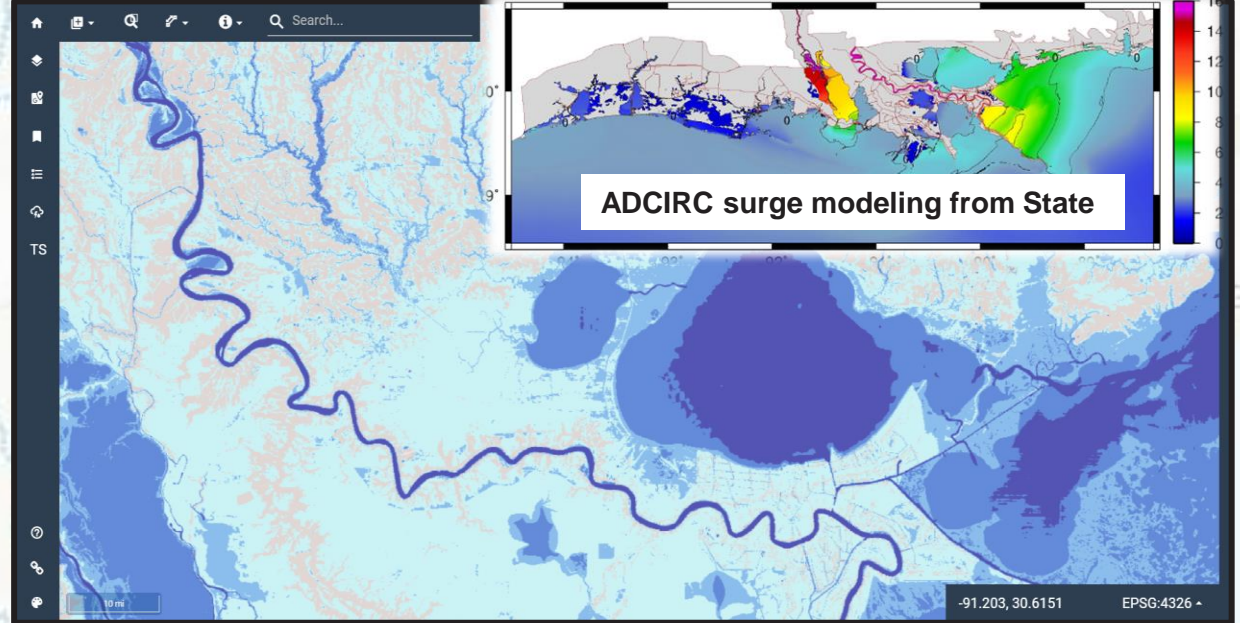
U.S. ARMY



US Army Corps of Engineers®




# USACE AUTHORITIES AT WORK






U.S. ARMY

**186 on standby or virtual Team within 7 hour return**

**MVN Alternate Command Post**  
  
Vicksburg, MS  
(~18 personnel)  
LTC Weander

**MVN Forward**  
Baton Rouge, LA  
(~5 personnel)  
Durund Elzey

**MVN EOC Bunker Team (28)**  
  
COL Jones  
Heath Jones

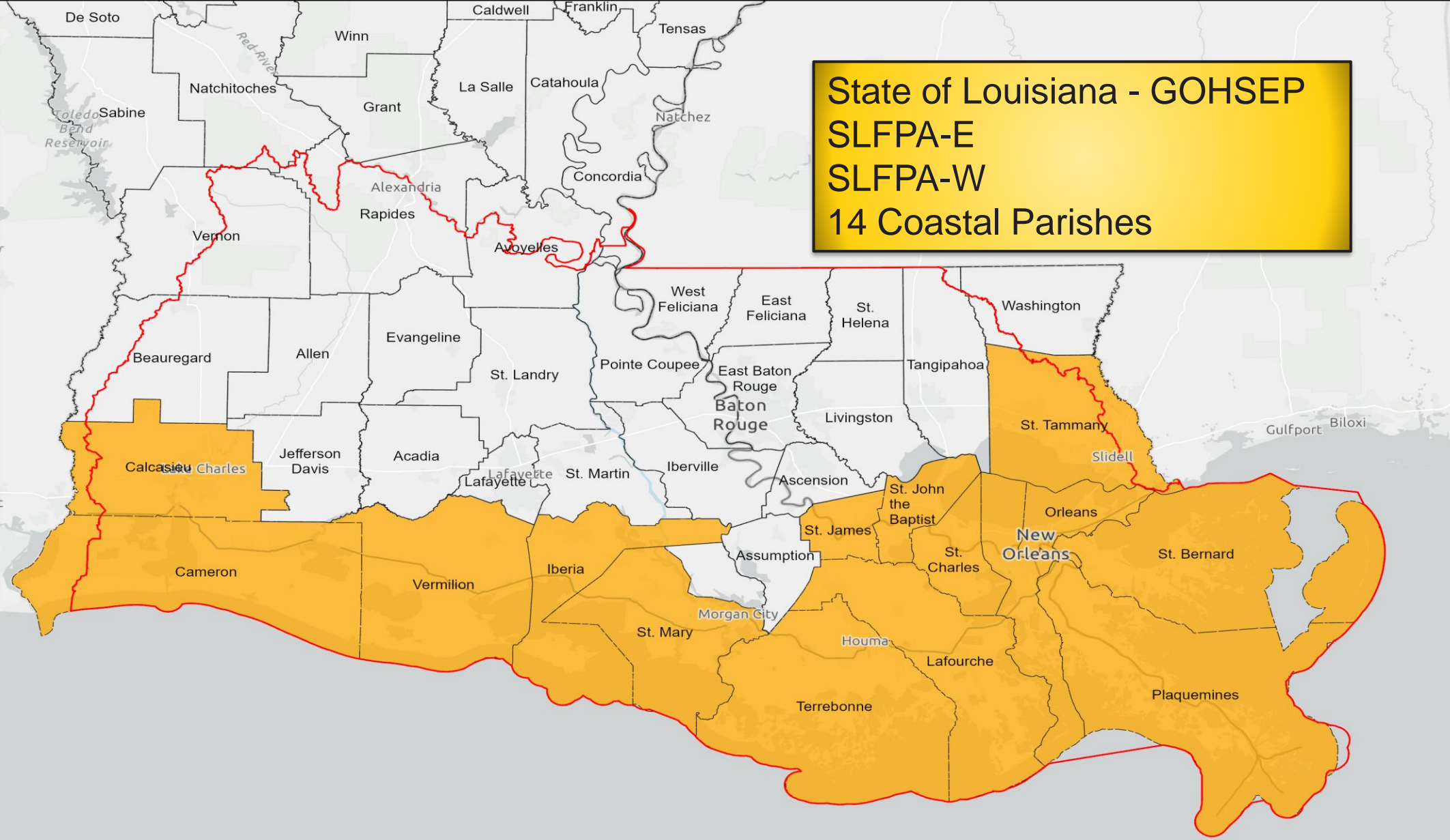
# MVN Hurricane Response plan





U.S. ARMY

State of Louisiana - GOHSEP  
SLFPA-E  
SLFPA-W  
14 Coastal Parishes



# MVN Local Government Liaison program



U.S. ARMY



# MVN Operational sites



U.S. ARMY



US Army Corps  
of Engineers®

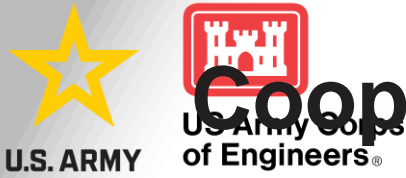


# PARTNERSHIP PROJECT STATUS

8

- PCCP
- Westshore Lake Pontchartrain
- Morganza
- Grand Isle and Vicinity
- Southwest Coastal





# Cooperation, Collaboration and Communication



## PCCP DESIGN PUMPING CAPACITY

The PCCPs were designed to match the existing or potential discharge capacity of the local interior drainage pump stations on the outfall canals. The drainage capacity of the PCCPs at 17th Street and London Avenue exceed the discharge capacity to support adaptability to future conditions.

- 1. PCCP at 17th Street Canal
  - Design capacity: 12,600 cfs
  - Max. local discharge: 10,330 cfs
  - 10-year rain event: 9,334 cfs
- 2. PCCP at Orleans Ave. Canal
  - Design capacity: 2,700 cfs
  - Max. local discharge: 2,700 cfs
  - 10-year rain event: 2,450 cfs
- 3. PCCP at London Ave. Canal
  - Design capacity: 9,000 cfs
  - Max. local discharge: 7,980 cfs
  - 10-year rain event: 5,211 cfs



## PHASE II MILESTONES

(As progress continues and more information becomes available, changes to schedule are anticipated)



U.S. ARMY



### MAY 24

- Complete permanent repairs and reinstall four pumps.
  - 17th Street PCCP Pump #1 (1,800 cfs)
  - 17th Street PCCP Pump #4 (1,800 cfs)
  - London Ave. PCCP Pump #2 (1,800 cfs)
  - London Ave. PCCP Pump #5 (900 cfs)

- Complete pump testing procedures.

- Confirm remaining 13 pumps reliability to perform as designed during 2024 Atlantic Hurricane Season.

- Demobilize equipment and repair crews in advance of hurricane season to limit interference with Non Federal Sponsor's activities.

### 1 JUN 24: START OF HURRICANE SEASON.

## SNAPSHOT OF REPAIRS



## PERMANENT CANAL CLOSURES AND PUMPS (PCCP) PHASE II

*Delivering reliable and sustainable pump stations that meet design specifications*

In March 2023, the U.S. Army Corps of Engineers initiated a two-phased approach to deliver reliable and sustainable pumps that meet the 35-year design requirements. Phase I was an interim approach to ensure the pump stations would perform as needed during the 2023 Hurricane Season by rehabilitating and restoring London Avenue Pump #1, inspecting each of the 16 remaining pumps across the three locations, undertake interim or immediate repairs if necessary and to conduct scientific and engineering assessments to understand the underlying cause for advanced corrosion of the pumps. Concurrently, USACE initiated Phase II for long-term repairs so the stations will meet the full 35-year design specifications. Phase I was completed by June 1, 2023.

The U.S. Army Corps of Engineers New Orleans District, in collaboration with the construction contractor, PCCP Joint Venture, began on-site Phase II work on December 1, 2023. USACE continues to work closely with PCCP JV, Coastal Protection and Restoration Authority and the Flood Protection Authority-East to finalize the most appropriate course of action for ensuring all 17 pumps will meet their 35-year design life. Physical construction during the multi-year Phase II will occur outside of hurricane season to reduce the risk of pumps being offline during a tropical weather event. USACE will provide regular and recurring updates throughout the process to ensure our partners, stakeholders and public can make their own risk-informed decisions using the most accurate and up-to-date information available.

## PCCP INDIVIDUAL PUMP STATUS

17th Street Outfall Canal (six 1,800 cfs and two 900 cfs pumps): 9,000 of 12,600 cfs design capacity available.

London Ave. Outfall Canal (four 1,800 cfs and two 900 cfs pumps): 6,300 of 9,000 cfs design capacity available.

Orleans Ave. Outfall Canal (three 900 cfs pumps): 100% of 2,700 cfs design capacity available.



- Pump online
- Pump online, lay down
- Pump in place repair underway
- Pump removed for repair

## PUMP WORK UNDERWAY

- Corrective action to ensure all 17 pumps will fulfill the 35-year design requirements are underway.
  - Pumps #1 and #4 at the 17th Street PCCP and pumps #2 and #5 at the London Avenue are disassembled with major components rehabilitated or replaced.
- USACE and the PCCP JV have agreed to terms and conditions for the multi-year repair effort.
- USACE and PCCP JV intent is to complete permanent repairs to the four pumps prior to the start of the 2024 Hurricane Season. The remaining pumps will be evaluated to ensure reliability during hurricane season.

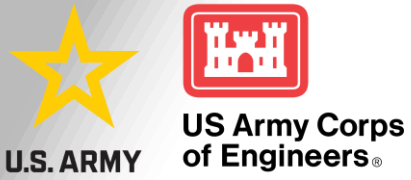
## ADDITIONAL WORK

- Green-space restoration consists of seeding and fertilizing impacted area, treating 18 trees, and planting two additional trees. Two trees have been planted, existing trees were nourished, and rye grass seed planted. Bermuda grass was seeded and fertilized.
- Repairs to basement cracks at the London Ave., Orleans Ave. and 17th Street PCCP are substantially complete.

## Our Commitment

- Ensure open and transparent communication throughout the process
- Provide regular and recurring updates to partners, stakeholders and the public





# WSLP



### Complete Work

- Levee Test Section (WSLP-101)
- Sand Placement 1 & 2
- Clay and Sand Stockpile
- Access Road Construction
- Pile Load Testing

### Ongoing

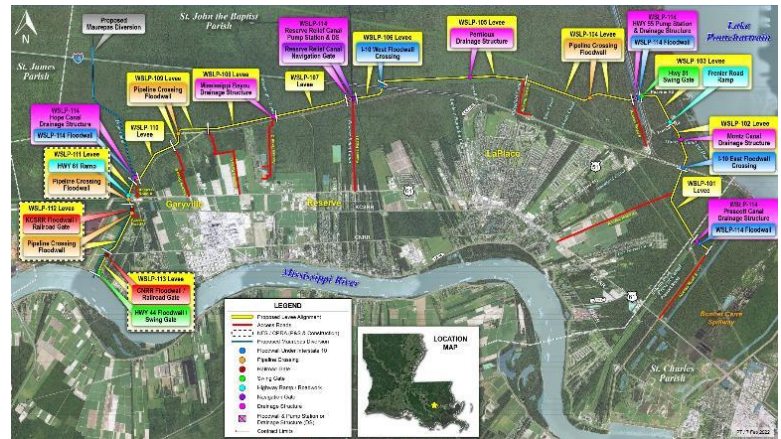
- Awarded eight contracts totaling over \$330M in levee construction FY 23 representing 13.5 of 18.5 total miles of levee and floodwall
- WSLP-103 expected to be awarded by 17 May
- WSLP-110 held Redzone meeting

### Upcoming

- Consolidated Appropriations Act of 2024 has freed up \$450MM of DRSA -17 funding, specifically Resiliency construction funds
- WSLP contracts 109 and 114a expected to be awarded in FY2024, 114 being awarded in FY25 and 103a, & 110a are expected to be awarded in FY26
- WSLP-115 St James EDR scheduled to be completed in Aug 2024

### St James Resiliency Study

- VTAM Memo is at MVD for final review







# Morganza to the Gulf



Reach A

- Reach A Contract to Advertise in May 2024
- Fed Funds Appropriated: \$469M



# LEGEND

- Foundation Prep & Supersack Repair (12 locations)
- Dune & Beach Repair with Stone Core (2,200 feet)
- Dune & Beach Repair with Clay Core (21,100 feet)
- Dune & Beach Repair with existing Sand-Filled Geotube Core (12,900 feet)
- Western Jetty Stone Cap & Eastern Breakwaters Stone Cap
- Proposed Additional Breakwaters Alignment (Approx 3 miles)

## Jefferson Parish



### Pedestrian/ATV dredge pipeline crossing



12,000LF of pipeline placed to date  
13 pipeline crossings installed to date

### West Jetty Repairs



## Grand Isle



### Construction of Stone Dune Cores

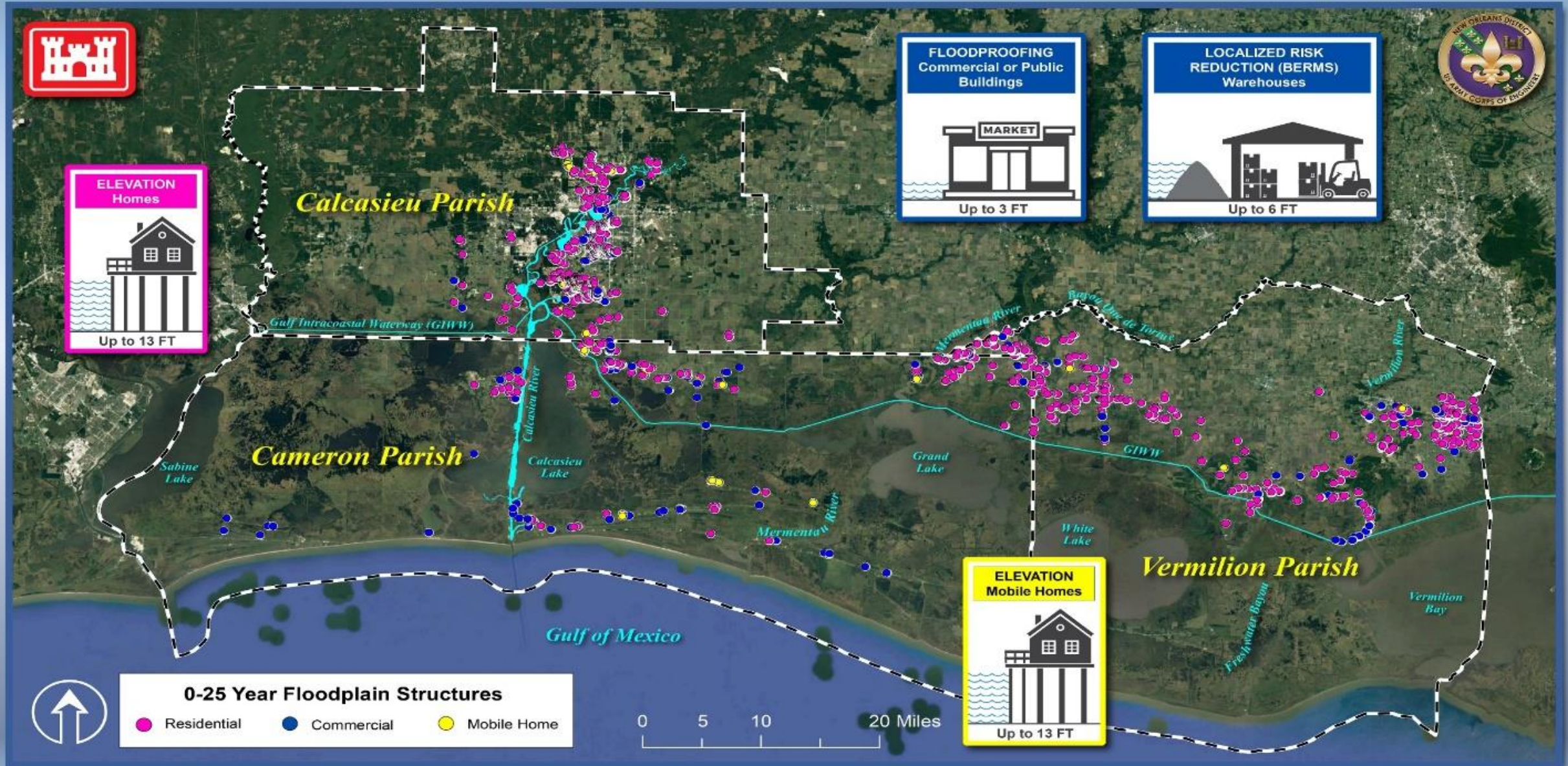


### Construction of Clay Dune Cores





# Southwest Coastal - Flood Risk Reduction Features





# BACKUP



U.S. ARMY  
US Army Corps  
of Engineers®







U.S. ARMY

US Army Corps  
of Engineers®

# EMERGENCY SUPPORT SNAPSHOT

## 8 Emergency Declarations/Activations 2017-2019

- 2017 New Orleans Sewerage and Water Board Severe Weather
- (175+ PAX) 2017 Flood Fight
- (10+ PAX) 2017 Tropical Storm Harvey
- (30+ PAX) 2017 Hurricane Nate
- (200+ PAX) Flood Fight 2018
- (30+ PAX) 2018 TS Gordon
- (200+ PAX) Great Flood Fight of Fall 2018
- (30+ PAX) 2019 TS Barry



### Major National Events

#### 250+ Personnel on FEMA taskers

- 2017 Hurricane Harvey
- 2017 Hurricane Irma
- 2017 Hurricane Maria
- 2018 CA Wildfires
- 2019 Super Typhoon Yutu
- 2019 Oklahoma Flooding & Tornadoes
- 2019 Hurricane Dorian
- 2020 Chattanooga Tornadoes
- 2020 Hurricane Laura
- 2020 Hurricane Delta
- 2021 Hurricane IDA

### 10 Emergency Declarations/Activations 2020-24

- (200+ PAX) 2020 Flood Fight
- (30+ PAX) COVID-19
- (20+ PAX) TS Cristobal
- (150+ PAX) Hurricane Laura and Marco
- (125+ PAX) TS Sally
- (100+ PAX) TS BETA
- (105+ PAX) Hurricane DELTA
- (70+ PAX) Hurricane ZETA
- (250+ PAX) Hurricane Ida
- (80 PAX) Saltwater Intrusion





U.S. ARMY



US Army Corps  
of Engineers®



# TYPICAL ESF #3 MISSIONS



Temp. Emergency Power



Debris Management



Infrastructure Assessment



Urban Search  
and Rescue



Temporary Roofing



Critical Public Facilities and Temp.  
Housing