

Implementation Update

GLENN LEDET JR., PE, EXECUTIVE DIRECTOR



110 ACTIVE PROJECTS

43

62

5

<i>PROJECT TYPE</i>	CONSTRUCTION	E & D	PLANNING
HURRICANE PROTECTION (34)	18	12	4
MARSH CREATION (38)	10	28	
BANK STABLIZATION (1)		1	
RIDGE RESTORATION (4)		4	
SHORELINE PROTECTION (8)	6	2	
BARRIER ISLANDS/HEADLANDS (4)		4	
DIVERSIONS (4)	2	2	
HYDROLOGIC RESTORATION (6)	2	4	
OYSTER BARRIER REEF (0)			
RECREATIONAL USE (4)	3	1	
OTHER (7)	2	4	1

The background is a dark teal color with a faint, white line-art illustration of a restoration site. It features a large crane on a barge, several smaller barges on the water, and a building with a smokestack on the right. The text 'RESTORATION UPDATE' is centered in white, bold, sans-serif font.

RESTORATION UPDATE



GRAND CHENIERE MARSH CREATION
Plaquemines Parish



-  - Mississippi River Borrow Area
-  - Marsh Creation Area
-  - Equipment Access Corridor
-  - Dredge Pipe Corridor





APRIL 2023





JANUARY 2024





JUNE 2023





JANUARY 2024





JUNE 2023





JANUARY 2024





GRAND CHENIERE MARSH CREATION

Plaquemines Parish

Gulf Coast Air Photo



DELTA COAST
CONSULTANTS, LLC





SHORELINE PROTECTION & RESTORATION






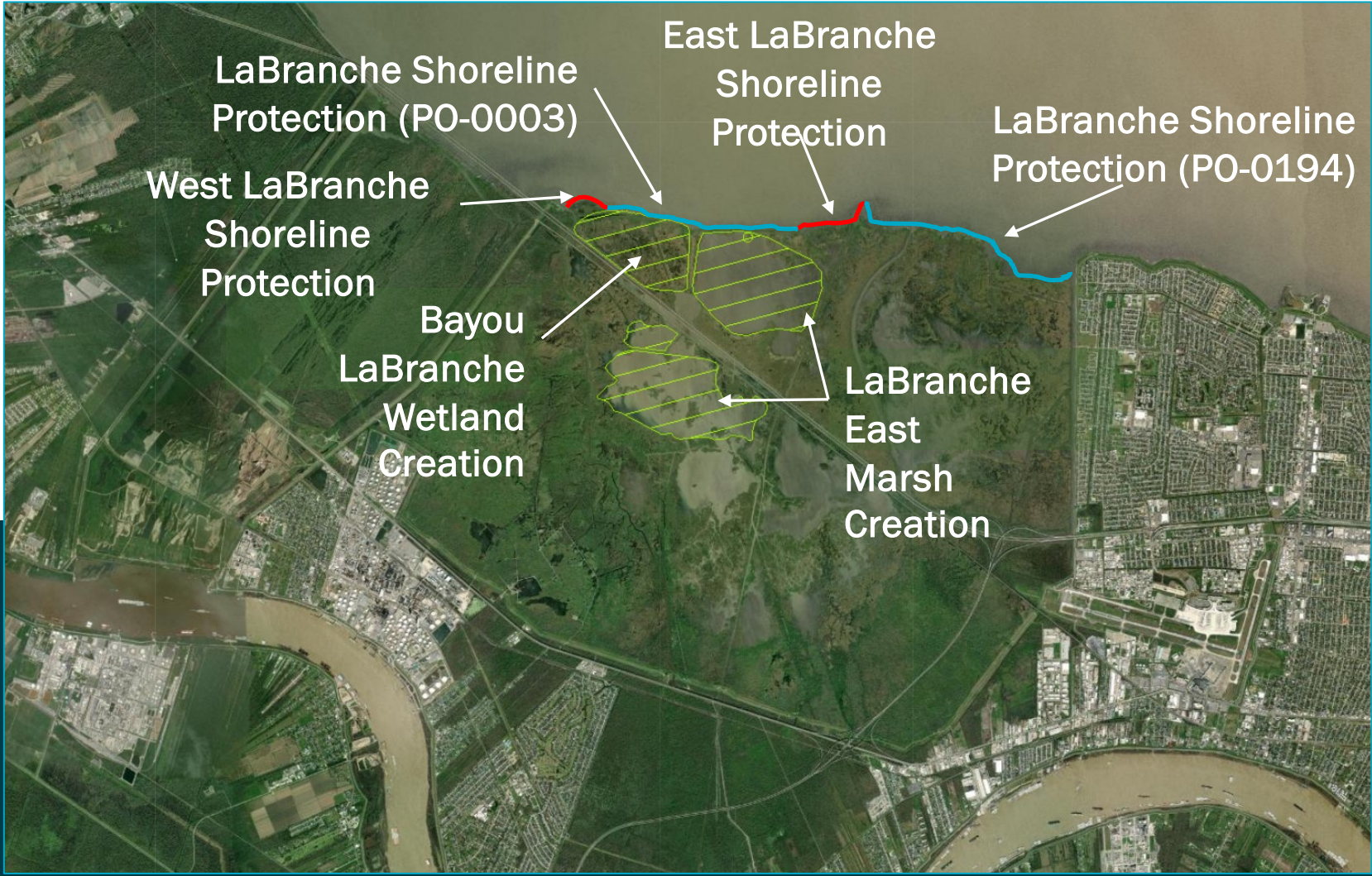
LABRANCHE SHORELINE PROTECTION

St. Charles Parish

Regional Projects

FUNDING BY PROGRAM

- CIAP 
 - \$6.5 million
- CWPPRA 
 - \$60.0 million
- STATE 
 - \$21.3 million





East LaBranche Marsh Creation

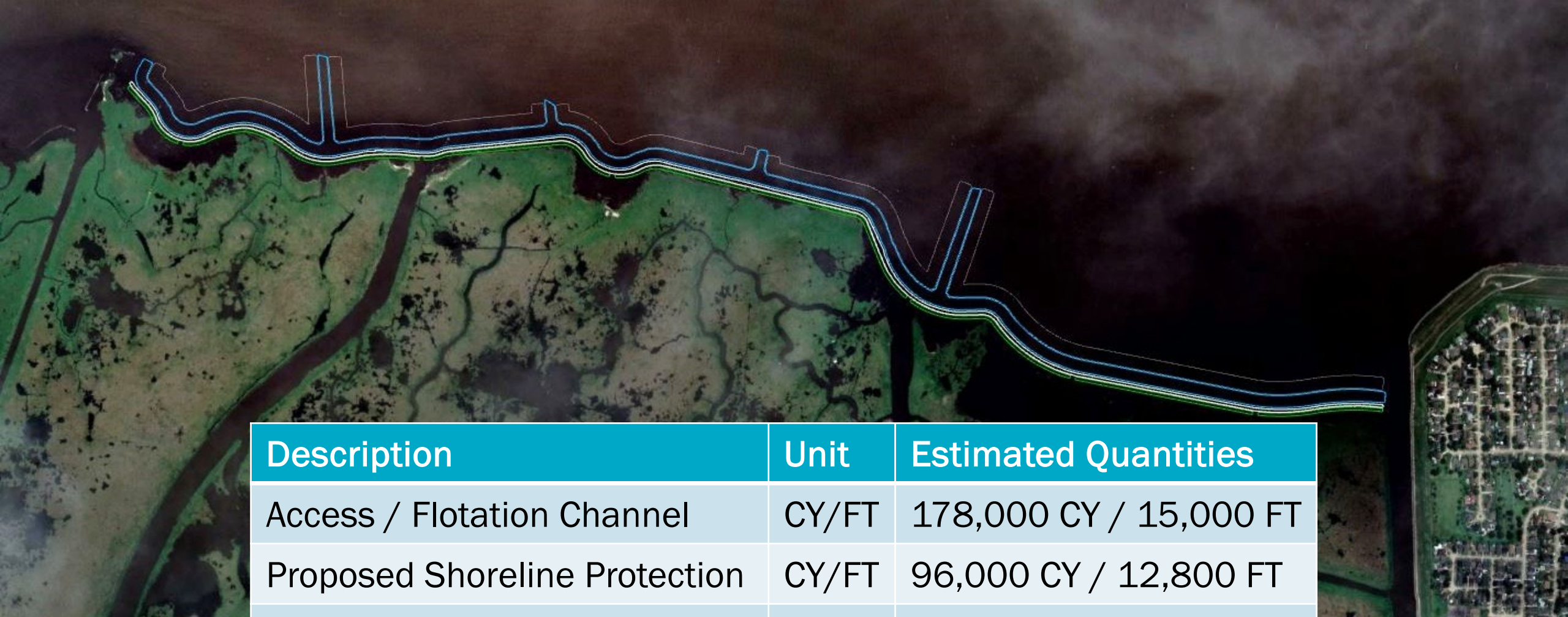


Project Area Land Loss

2010 to 2021



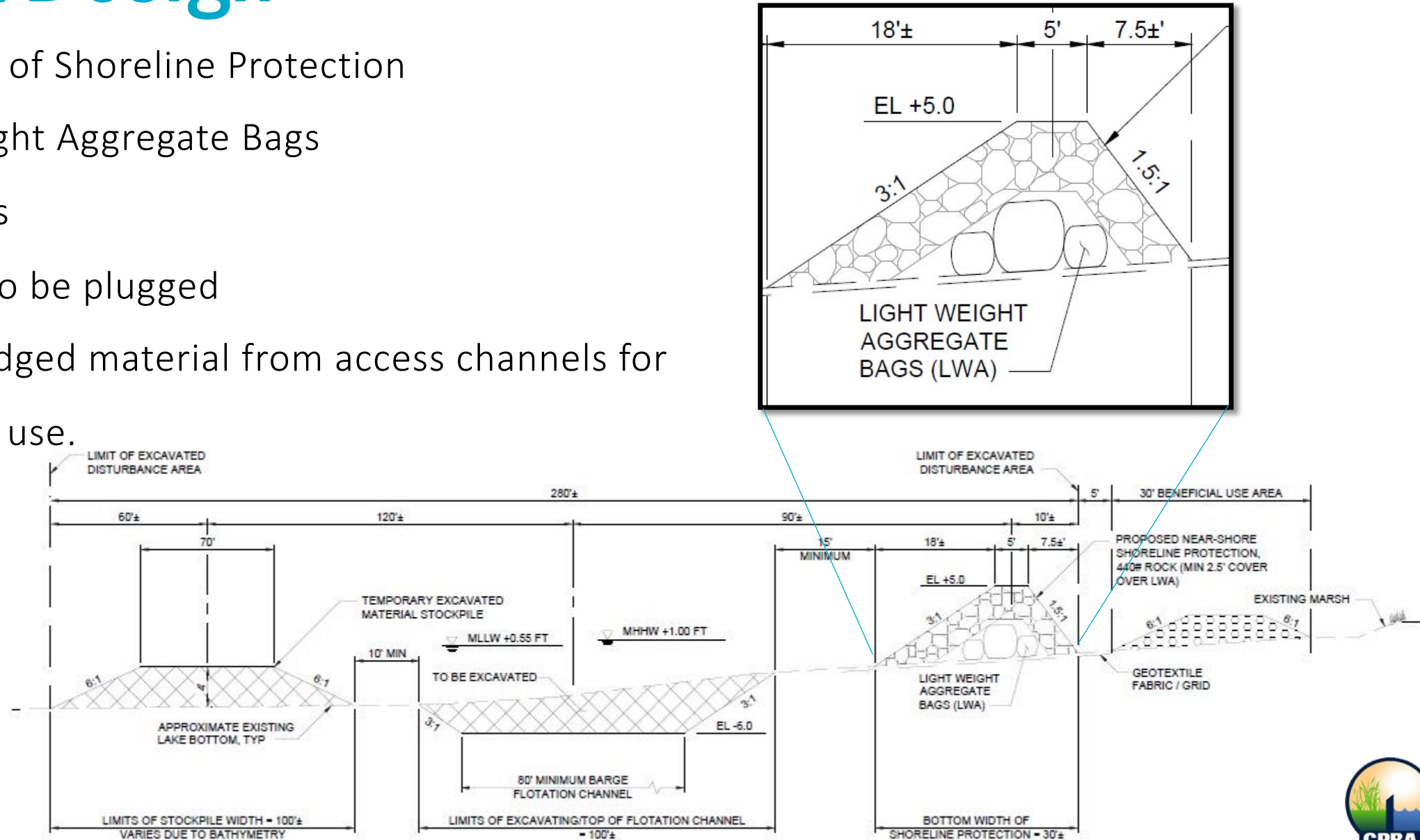
Project Features & Layout



Description	Unit	Estimated Quantities
Access / Flotation Channel	CY/FT	178,000 CY / 15,000 FT
Proposed Shoreline Protection	CY/FT	96,000 CY / 12,800 FT
Beneficial Use	CY	82,000 CY

Project Design

- 12,800 FT of Shoreline Protection
- Light Weight Aggregate Bags
- 7 Fish dips
- 2 Canals to be plugged
- Using dredged material from access channels for beneficial use.



Project Funding & Schedule

Funding Source: 2021 & 2022 Surplus Funds

- \$13M Secured in surplus funding
- \$5.7M of additional funding requested

Project Timeline





**RECREATIONAL USE/
PARK IMPROVEMENTS**



CYPREMORT POINT STATE PARK IMPROVEMENTS

Iberia & St. Mary Parishes

**QUINTANA CANAL
2,322 FT. ROCK REVETMENT**

**1,700 FT. MARSH
BOARDWALK**

**ROAD
IMPROVEMENTS**

**MOBILE COMFORT
STATIONS**

**22 PULL-THROUGH
RV CAMPSITES**

**BEACH NOURISHMENT
18,000 CU. YARDS SEDIMENT**



An aerial photograph of Cypremort Point State Park showing various improvements. In the foreground, there is a large, newly paved parking lot with several parking spaces, some of which are occupied by RVs. A paved walkway runs alongside the parking lot. The middle ground features a large, green lawn area with several picnic tables and benches. In the background, there is a sandy beach area with a few structures, possibly lifeguard stands or restrooms, and a large body of water. The sky is clear and blue. The word "VIDEO" is overlaid in large, white, bold letters across the center of the image.

VIDEO

CYPREMORT POINT STATE PARK IMPROVEMENTS



CYPREMORT POINT STATE PARK IMPROVEMENTS

Iberia & St. Mary Parishes

86 JOBS
*Not Including
Government Workers*





ADDITIONAL CPRA UPDATES

ASBPA Coastal Summit – Washington D.C.

American Shore and Beach Preservation Association



Coastal Day 2024

March 25th



Quarterly
MEETING REQUEST
with
CPRA

When:
MAY 8th

WWW.LOUISIANACTAC.ORG



*Scan to
Participate!*

These meeting opportunities are first come first serve to CTAC clients. Please sign up at www.louisianactac.org to become a client before registering.

Community Conversations



For the 2029 Coastal Master Plan

RESTORE
THE MISSISSIPPI RIVER DELTA



NEW DATE/LOCATION

Tuesday, April 16th from 5:00 - 7:00 PM

Belle Chasse Auditorium

8398 LA-23, Belle Chasse, LA 70037

Wednesday, April 17th from 5:00 - 7:00 PM

Edward Dufresne Community Center

274 Judge Edward Dufresne Parkway, Luling, LA 70070

Tuesday, April 23rd from 5:00 - 7:00 PM

Grand Lake Elementary School

1039 LA-384, Grand Lake, LA 70607

Thursday, April 25th from 5:00 - 7:00 PM

Vermilion Parish Library

405 E St Victor St, Abbeville, LA 70510

Tuesday, April 30th from 5:00 - 7:00 PM

Warren J. Harang, Jr. Municipal Auditorium

310 N Canal Blvd, Thibodaux, LA 70301

Tuesday, May 7th from 5:00 - 7:00 PM

Docville Farm

5124 E Street, E St Bernard Hwy, Violet, LA 70092

2024 CSAP Recipients - *Coastal Science Assistantship Program*



John White, Ph.D.,
Louisiana State University

“The relative contribution of plant uptake vs. denitrification of nitrate in water quality improvement from sediment river diversion operations”



Megan La Peyre, Ph.D.
Louisiana State University Ag Center

“Development of a sustainability index tool for coastal Louisiana to inform site selection for oyster based living shorelines that both enhance estuarine oyster metapopulations and promote shoreline stabilization.”



Sabarethinam Kameshear, Ph.D.
Louisiana State University

“Coastal Master Plan’s effect on hurricane safety of aboveground storage tanks in Louisiana.”



Bingqing Liu, Ph.D.
University of Louisiana at Lafayette

“Revealing phytoplankton diversity in Louisiana estuaries: A hyperspectral exploration with field, laboratory, and satellite data powered by spectral mixture analysis.”



CWPPRA'S COASTAL CELEBRATION

LaBranche East
Marsh Creation

Date: May 1st, 2024

Time: 10:00 am

Location: Bonnet Carre Spillway Pavilion
16302 River Road, Norco, LA 70079



CONNECT WITH US!



@LOUISIANACPRA

