

CPRA Dredging Update

RUDY SIMONEAUX, CPRA CHIEF OF ENGINEERING



COASTAL PROTECTION
& RESTORATION
AUTHORITY

CPRA SINCE 2007

67,200
ACRES
BENEFITED
(105 SQUARE MILES)

214 M YD³
OF SEDIMENT FILLED

383 MILES
OF IMPROVED LEVEE

71.6 MILES
OF BARRIER ISLAND RESTORATION

\$21.6 B
FUNDING SECURED

Constructed Hydraulic Dredging Projects:

18 Barrier Island/Headland Projects

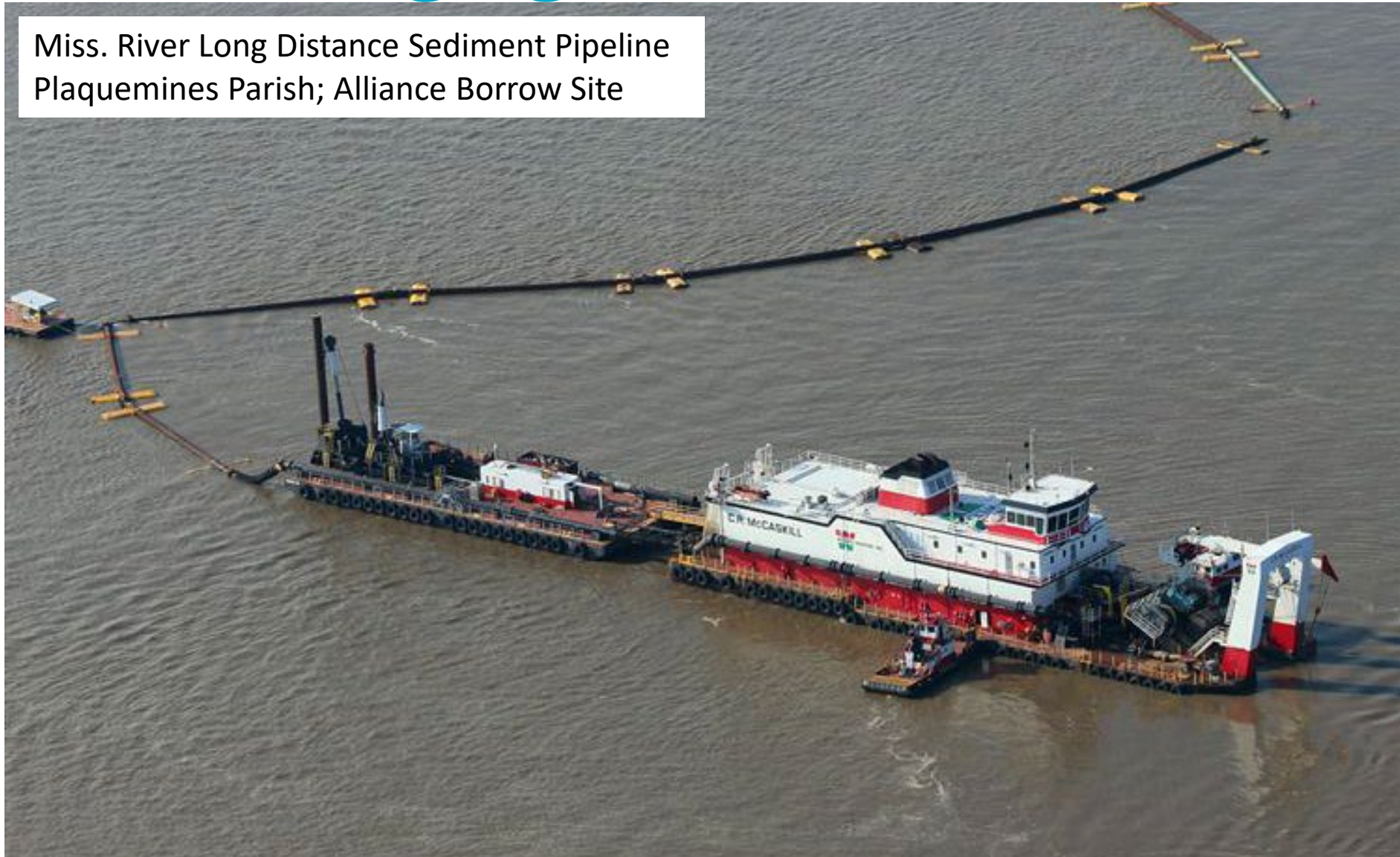
38 Marsh Creation Projects

Nearly 30,000 acres marsh/beach/dune/ridge habitat created

Total Investment = \$2.6 Billion

Hydraulic Dredging - Cutter Suction

Miss. River Long Distance Sediment Pipeline
Plaquemines Parish; Alliance Borrow Site



Hydraulic Dredging - Cutter Suction

Bayou DeCade Ridge and March Creation
Terrebonne Parish; Lake DeCade



Hydraulic Dredging - Cutter Suction



Hydraulic Dredging – Trailing Suction Hopper



CREDIT: GREAT LAKES DREDGE & DOCK

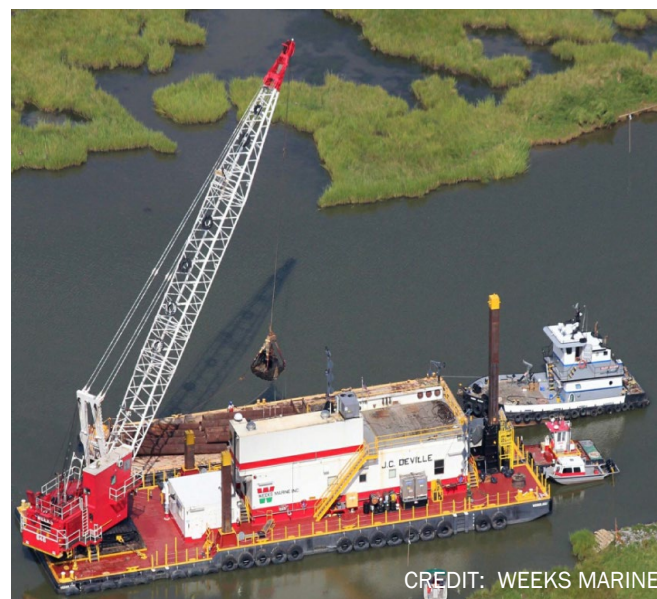
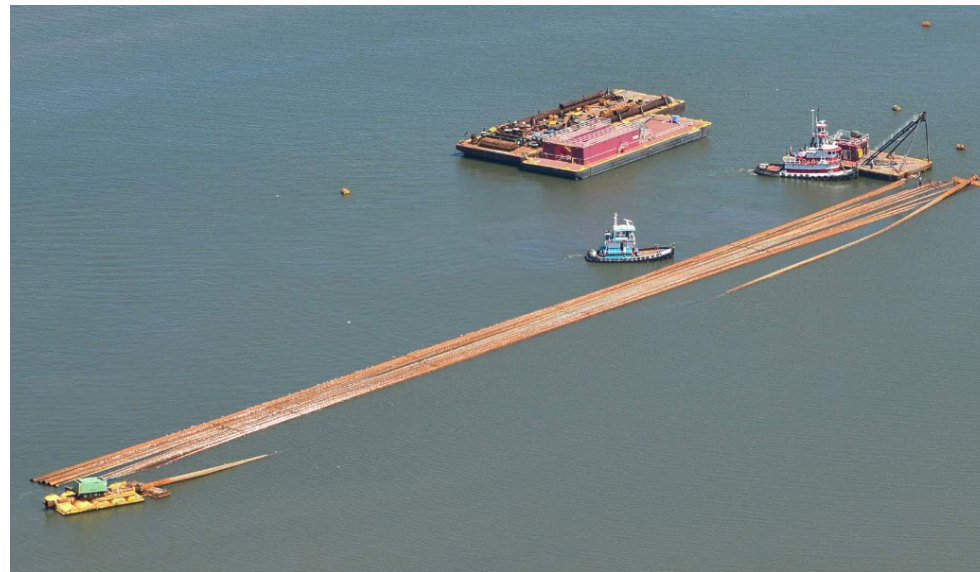
Hydraulic Dredging – Trailing Suction Hopper

Cameron Parish Shoreline Restoration
Cameron Parish; Calcasieu Ship Channel

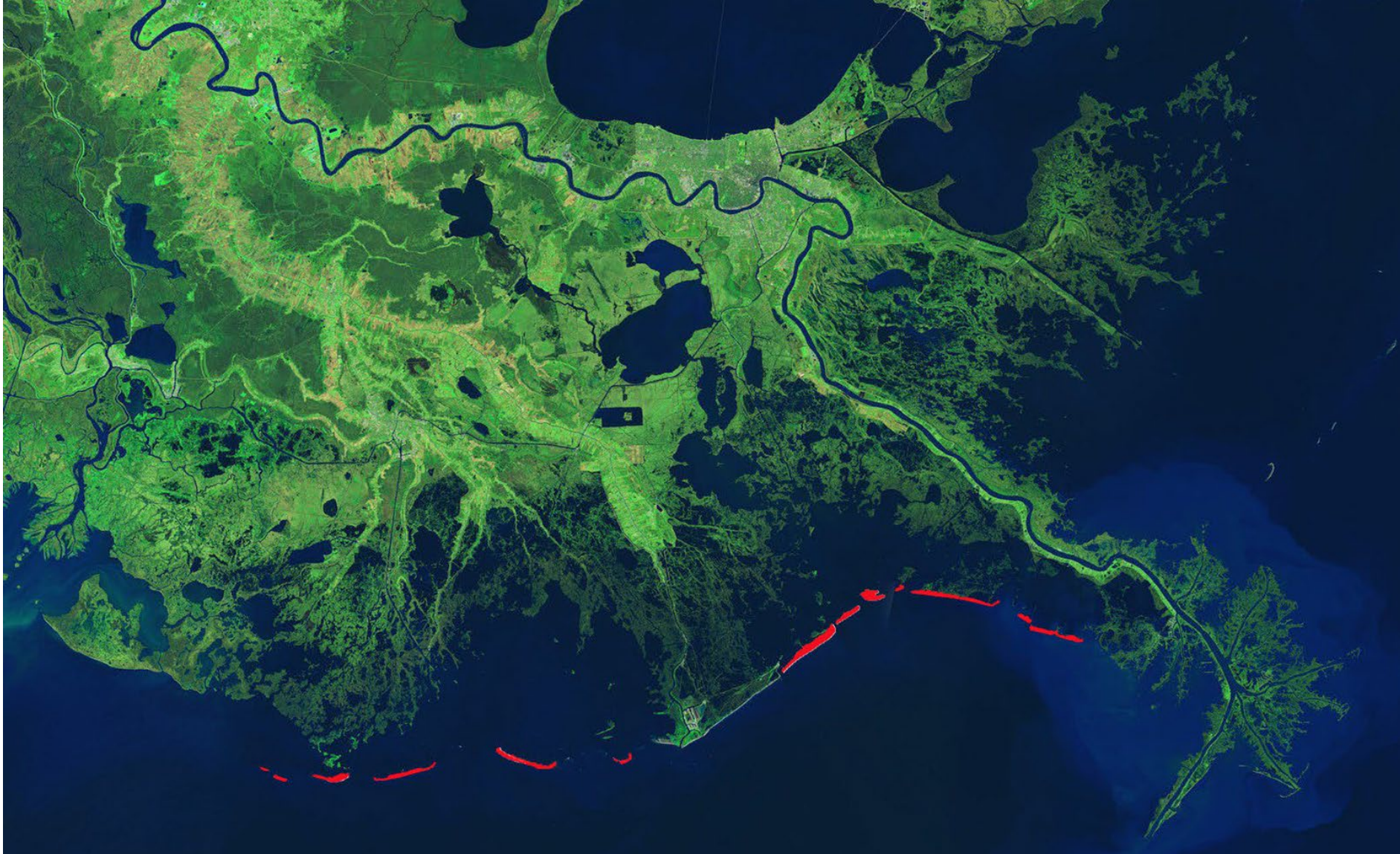


CREDIT: WEEKS MARINE

Required Equipment and Materials



Barrier Island Restoration



Barrier Island Restoration - Example

West Grand Terre Beach Nourishment
Jefferson Parish

VIDEO

An aerial photograph showing a wide, sandy beach area with some green vegetation on the right side. The ocean is visible on the left and right, with a clear horizon line. The sky is blue with some light clouds. The word "VIDEO" is overlaid in large white letters across the center of the image.

Marsh Creation



DURING CONSTRUCTION



CONSTRUCTION COMPLETE



1 YEAR LATER

Marsh Creation – Example 1

Barataria Basin Ridge & Marsh Creation - Spanish Pass
Plaquemines Parish

VIDEO



Marsh Creation – Example 2

Lake Borgne Marsh Creation
St. Bernard Parish



VIDEO

A faint, light blue background logo is centered on the page. It depicts a stylized tree with several thin, vertical trunks and a dense canopy of leaves, all contained within a rounded rectangular frame that resembles a pot or a planter. The logo is semi-transparent and serves as a subtle backdrop for the main text.

FY 2025 ANNUAL PLAN

\$1.71 BILLION

INVESTMENT IN OUR COAST

\$1.35 BILLION ALLOCATED FOR CONSTRUCTION

19 DREDGING PROJECTS

SLATED FOR
CONSTRUCTION
TOTALING

69.1 MILLION CUBIC YARDS
OF SEDIMENT TO CREATE OR NOURISH MORE THAN

12,770 ACRES

136 ACTIVE PROJECTS

93% PROJECT
ASSOCIATED
EXPENDITURES

PLANNING

8 PROJECTS • \$11.8 MILLION

ENGINEERING & DESIGN

45 PROJECTS • \$93 MILLION

CONSTRUCTION

83 PROJECTS

\$1.35 BILLION

187,481 ACRES BENEFITED

121 MILES OF LEVEE

OM&M

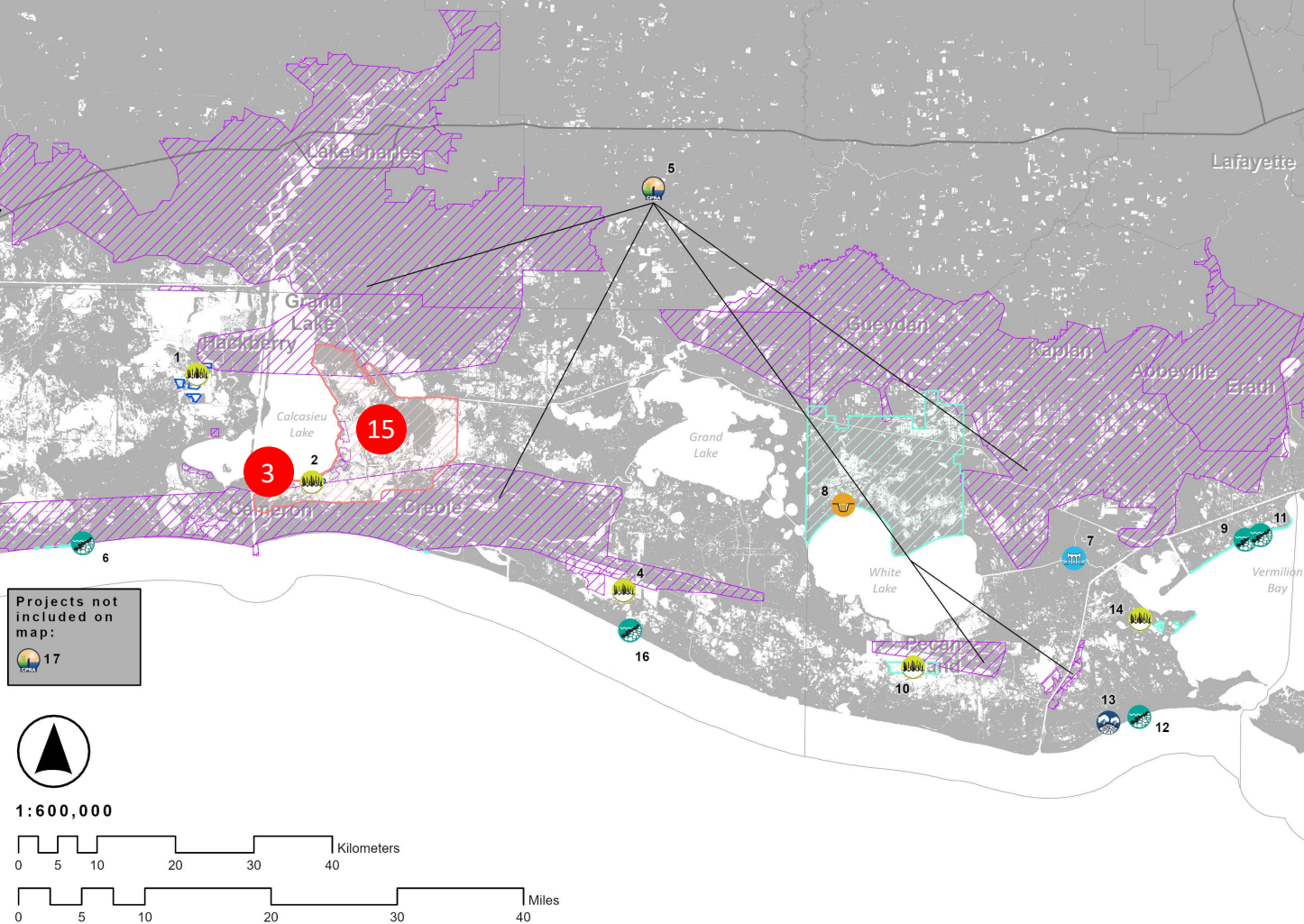
190
COMPLETED
PROJECTS

\$138 MILLION

PROJECTS
WILL
SUPPORT

11,312 DIRECT JOBS

\$670 MILLION IN LABOR INCOME



PROJECTS IN CONSTRUCTION:

- 3** No Name Bayou Marsh Creation & Nourishment
- 5 Southwest Coastal Louisiana
- 6 Cameron Gulf Shoreline Protection
- 9 North Vermilion Bay Shoreline Protection
- 12 Cheniere Au Tigre Shoreline Protection Gap Closure
- 13 Cheniere Au Tigre Ridge Restoration
- 15** Calcasieu-Sabine Large-Scale Marsh and Hydrologic Restoration
- 16 Rockefeller Shoreline Protection-RESTORE Parish Matching

Southwest Region

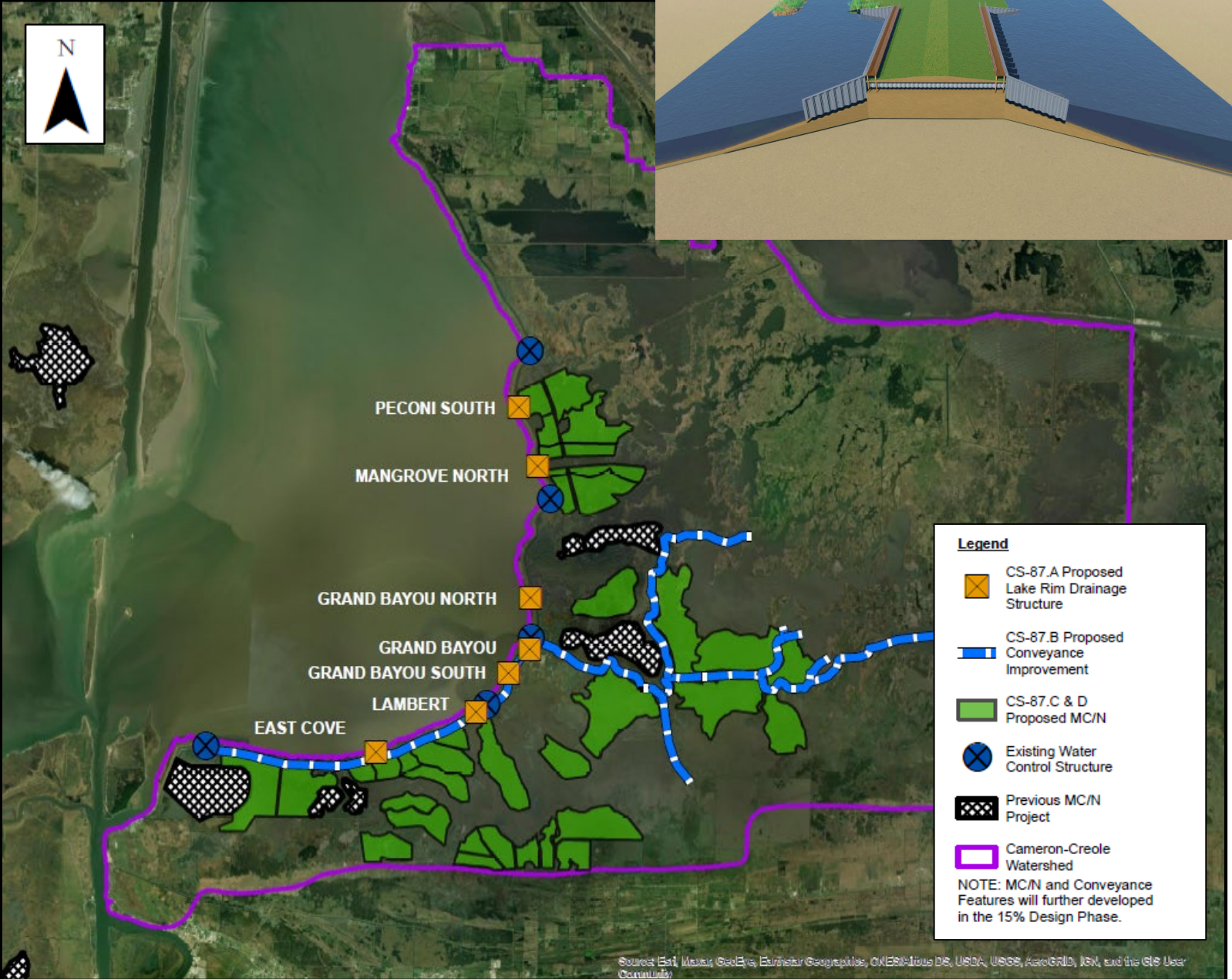
2 HYDRAULIC DREDGING PROJECTS IN CONSTRUCTION IN FY 2025

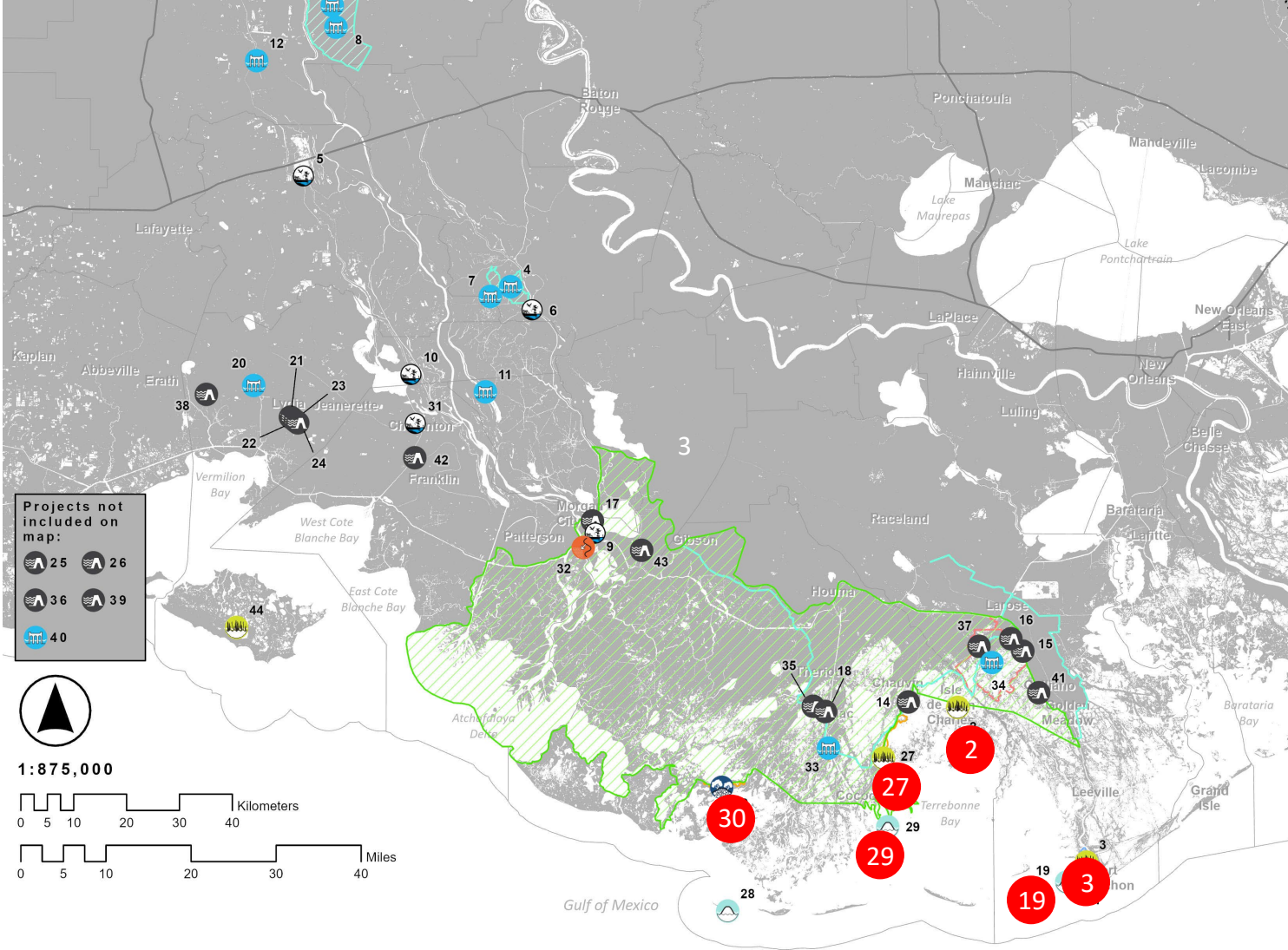
Long Point Bayou Marsh Creation
Cameron Parish; September 2023

VIDEO



Calcasieu-Sabine Large Scale Marsh Creation & Hydrologic Restoration Project





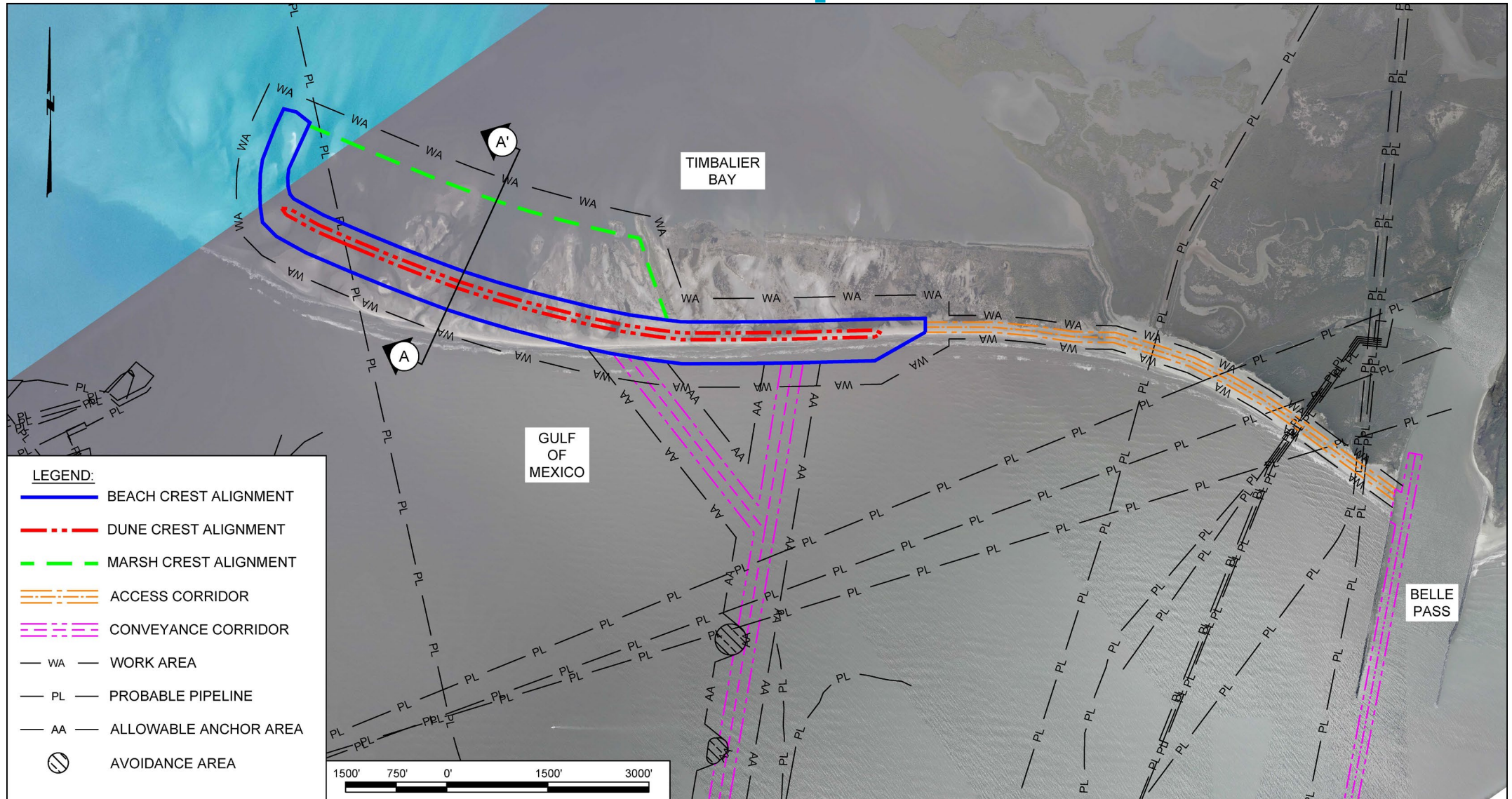
PROJECTS IN CONSTRUCTION:

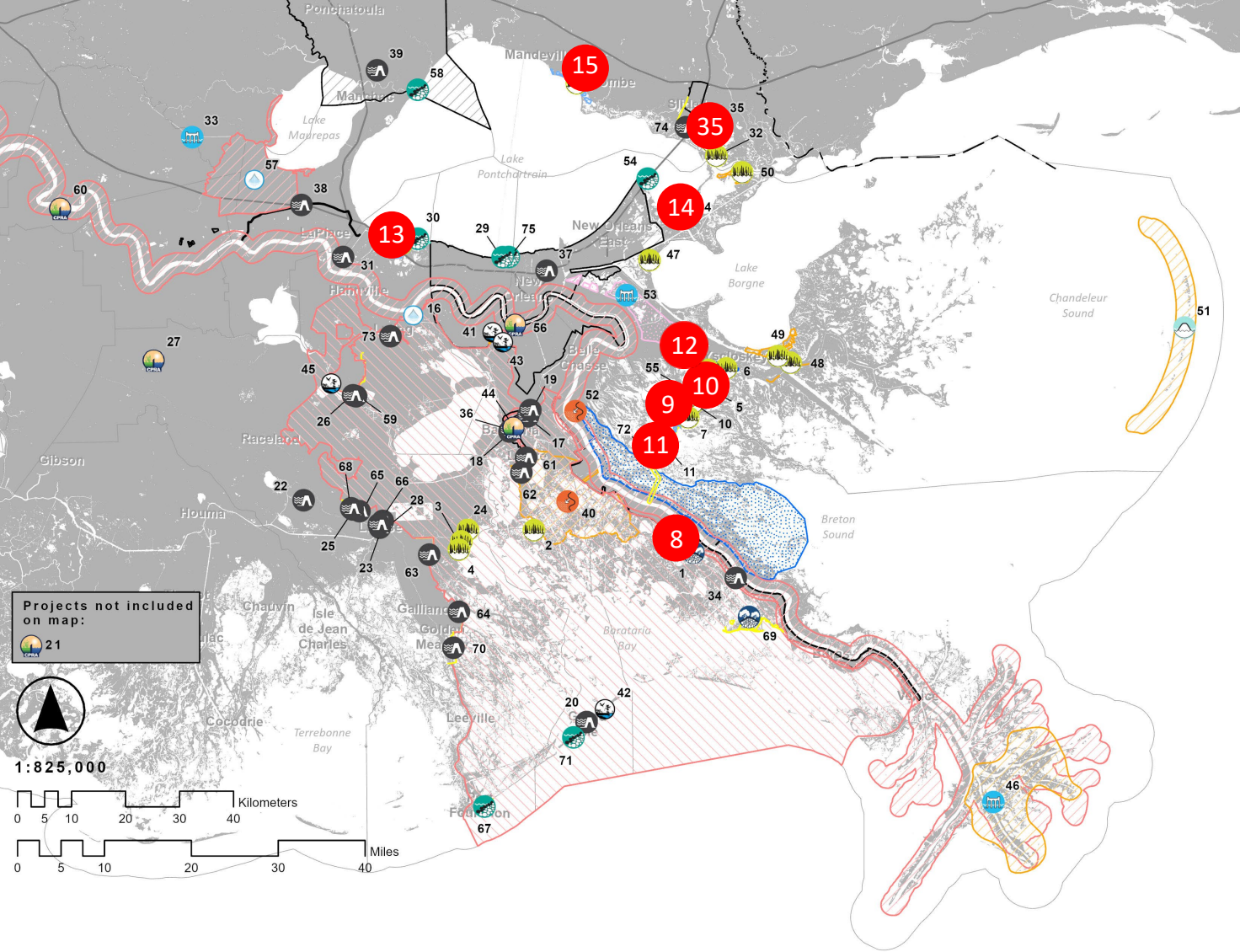
- 2** Island Road Marsh Creation and Nourishment
- 3** West Fourchon Marsh Creation
- 4 East Grand Lake Upper Region
- 5 Boy Scouts of America Swamp Base Boat Launch
- 6 Bayou Pigeon Boat Launch
- 8 Point Coupee Drainage Improvements
- 14 Morganza to the Gulf
- 15 Larose to Golden Meadow System Improvements
- 16 Reach L Mitigation
- 18 MTG Levee Improvements- TLCD
- 19** West Belle Headland Repairs
- 20 Rodere Canal Water Control Structure
- 21 Little Valley Bayou Flood Protection Project
- 22 George Lancon Flood Protection Project
- 23 Rutton Rill Road Flood Protection Project
- 24 Stumpy Bayou Flood Protection Project
- 27** Terrebonne Basin Ridge and Marsh Creation- Bayou Terrebonne Increment
- 29** Terrebonne HNC Island Restoration
- 30** Bayou Dularge Ridge and Marsh Creation
- 31 Chitimacha Boat Launch
- 33 Houma Navigation Canal Lock Complex
- 35 MTG Reach E Levee Lift
- 37 Grand Bayou Pump Station
- 38 Jefferson Canal Flap Gate
- 41 Section A West Improvements
- 42 Bayou Teche Floodgate

South Central Region

6 HYDRAULIC DREDGING PROJECTS IN CONSTRUCTION IN FY 2025

West Belle Headland Repair



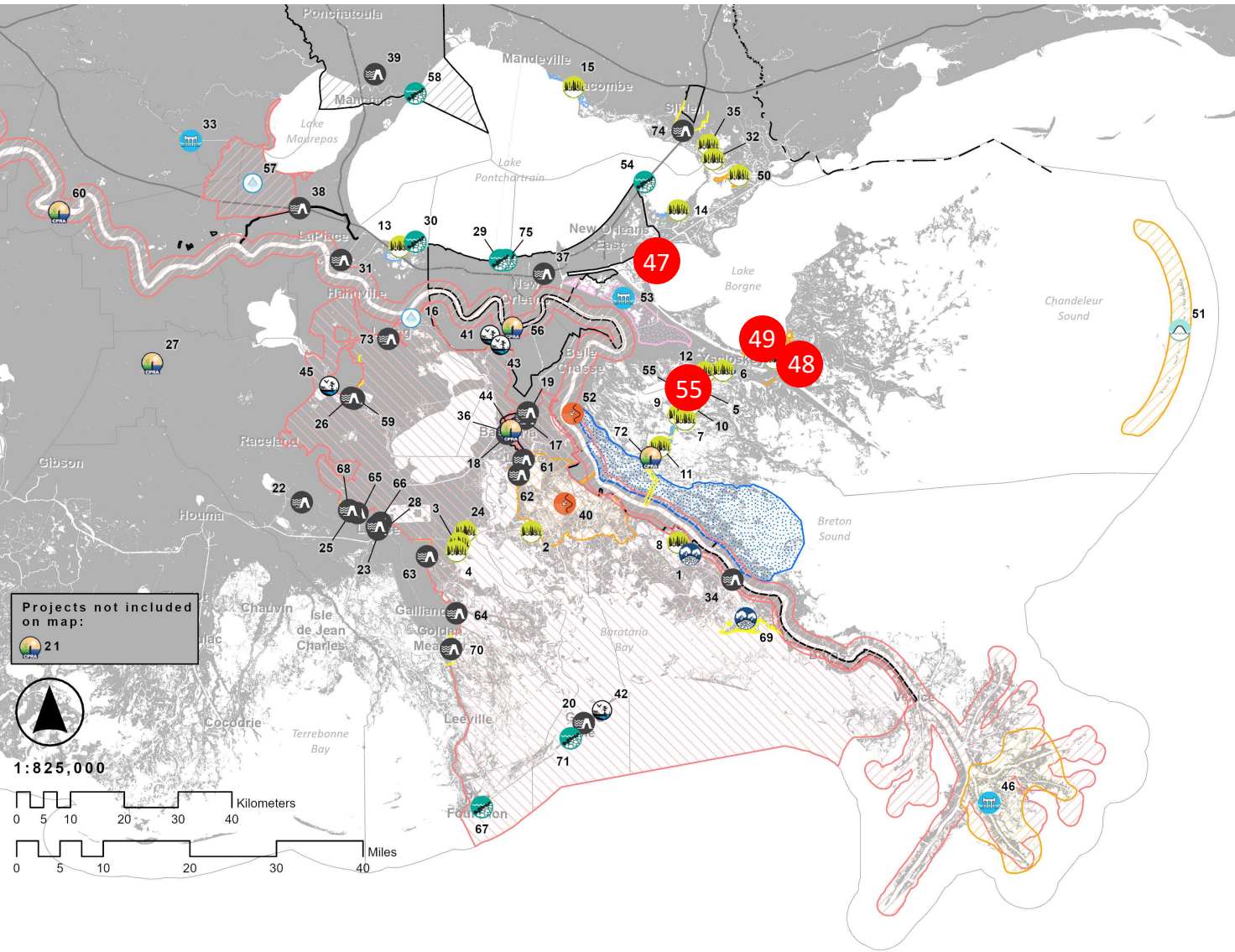


PROJECTS IN CONSTRUCTION:

- 8** Grand Bayou Ridge and Marsh Creation
- 9** Mid Breton Land Bridge Marsh Creation & Terracing
- 10** East Delacroix Marsh Creation and Terracing
- 11** Breton Landbridge Marsh Creation (West)
- 12** Reggio Marsh Creation & Terracing
- 13** LaBranche East Marsh Creation 1
- 14** St. Catherine Island Marsh Creation & Shoreline Restoration
- 15** Bayou Cane Marsh Creation
- 17 Rosethorne Tidal Protection
- 18 Paillet Basin Tidal Protection
- 19 Crown Point Tidal Protection
- 21 Plaquemines Parish Drainage Improvements
- 22 Lockport to Larose Reach B1
- 23 Ted Gisclair Lock Structure
- 25 MTG Levee Improvements- NLLD
- 26 St. Charles Parish Crawford Canal/Sunset Pump Station
- 27 Sugar Ridge Pump Station
- 28 Industrial Park Avenue Improvements
- 29 Jefferson Parish Bucktown Living Shoreline Protection
- 30 LaBranche Shoreline Protection
- 31 Montz Pump Station
- 34 New Orleans to Venice
- 35** New Orleans to Venice Mitigation - Plaquemines Non-Federal
- 37 SELA- Overall
- 38 West Shore-Lake Pontchartrain, Louisiana Hurricane Protection
- 40 Mid-Barataria Sediment Diversion

Southeast Region

9 HYDRAULIC DREDGING PROJECTS IN CONSTRUCTION IN FY 2025



PROJECTS IN CONSTRUCTION:

- 41 Bayou Segnette State Park Improvements
- 42 Grand Isle State Park Improvements
- 43 WHARF Phase 1
- 44 Louisiana Wetlands Education Center
- 45 Des Allemands Boat Launch
- 47 Golden Triangle Marsh Creation**
- 48 Bayou LaLoutre Ridge Restoration and Marsh Creation**
- 49 Lake Borgne Marsh Creation- Increment 1**
- 55 Lake Lery Marsh Creation (Phase 2)**
- 57 River Reintroduction into Maurepas Swamp
- 58 Manchac Landbridge (Rock Breakwater) Shoreline Protection
- 59 Sunset Levee Upper Barataria Risk Reduction (UBRR)
- 60 Pumping Capacity Improvements Phase 1
- 61 Goose Bayou Tidal Protection
- 62 Lower Lafitte Tidal Protection
- 63 Storm Surge Risk Reduction for Reach E-North (SLLD)
- 64 Section D Storm Surge Risk Reduction
- 65 Ludevine Pump Station
- 66 Section F Berm Improvement
- 67 Port Fourchon Shoreline Protection
- 68 MTG Eastern Tie-in Levee Improvements
- 70 Section A East Increment Improvement
- 75 Jefferson Parish Lakefront Shoreline Protection

Southeast Region

4 HYDRAULIC DREDGING PROJECTS IN CONSTRUCTION IN FY 2025

Mississippi River Dredging



Mississippi River Dredging – Alliance



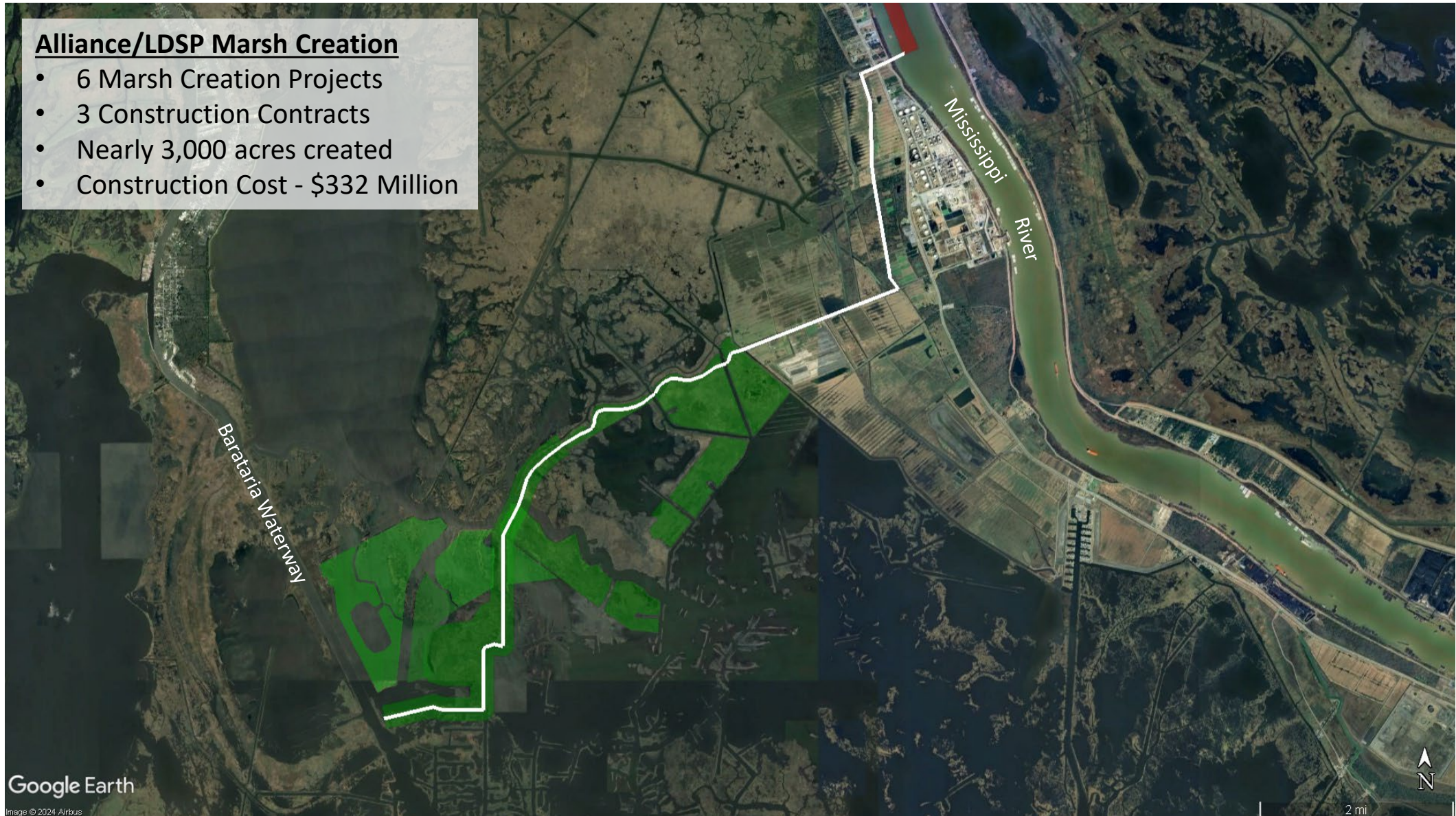
Mississippi River Dredging – Alliance



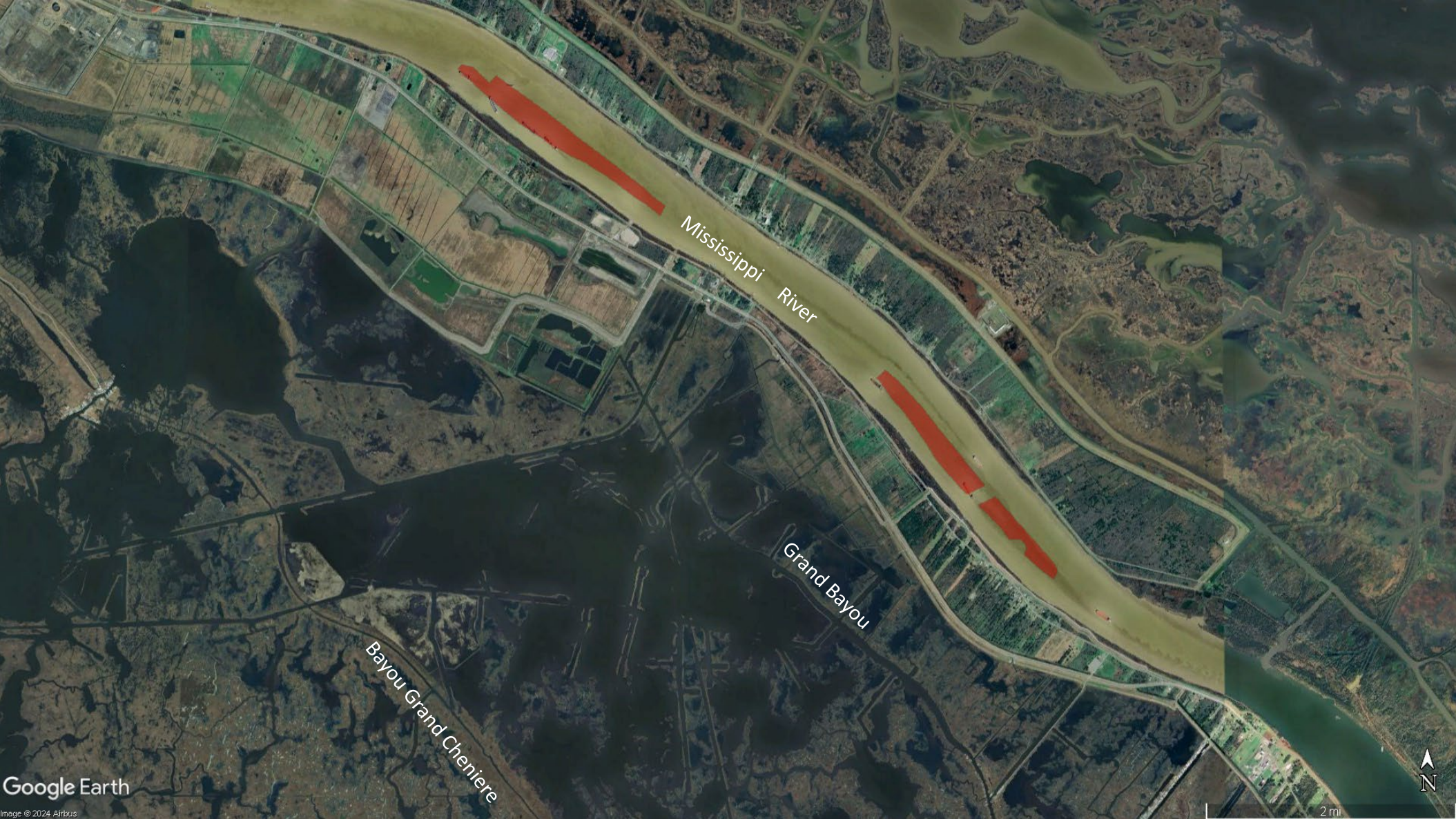
Mississippi River Dredging – Alliance

Alliance/LDSP Marsh Creation

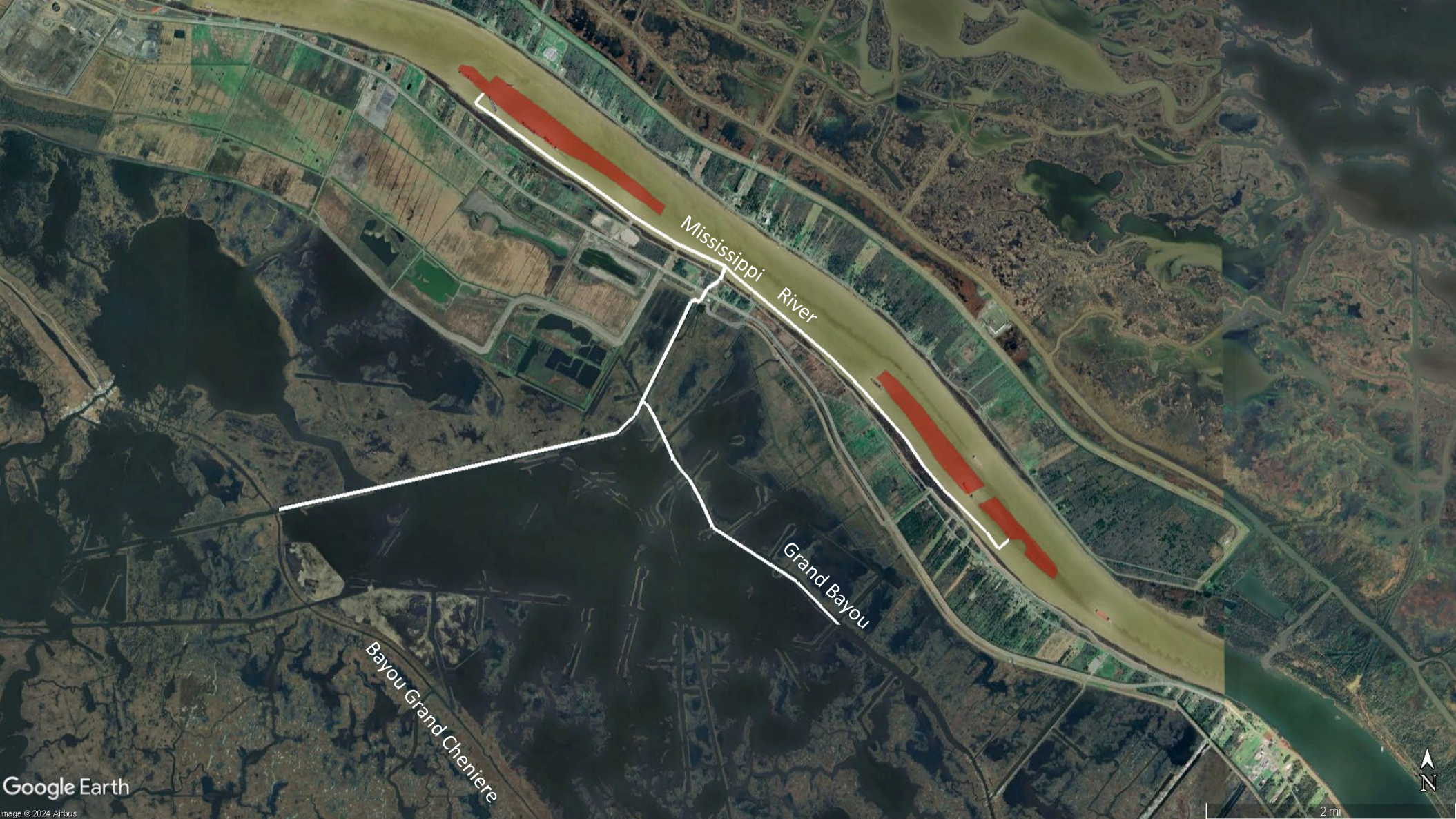
- 6 Marsh Creation Projects
- 3 Construction Contracts
- Nearly 3,000 acres created
- Construction Cost - \$332 Million



Mississippi River Dredging – Point a la Hache



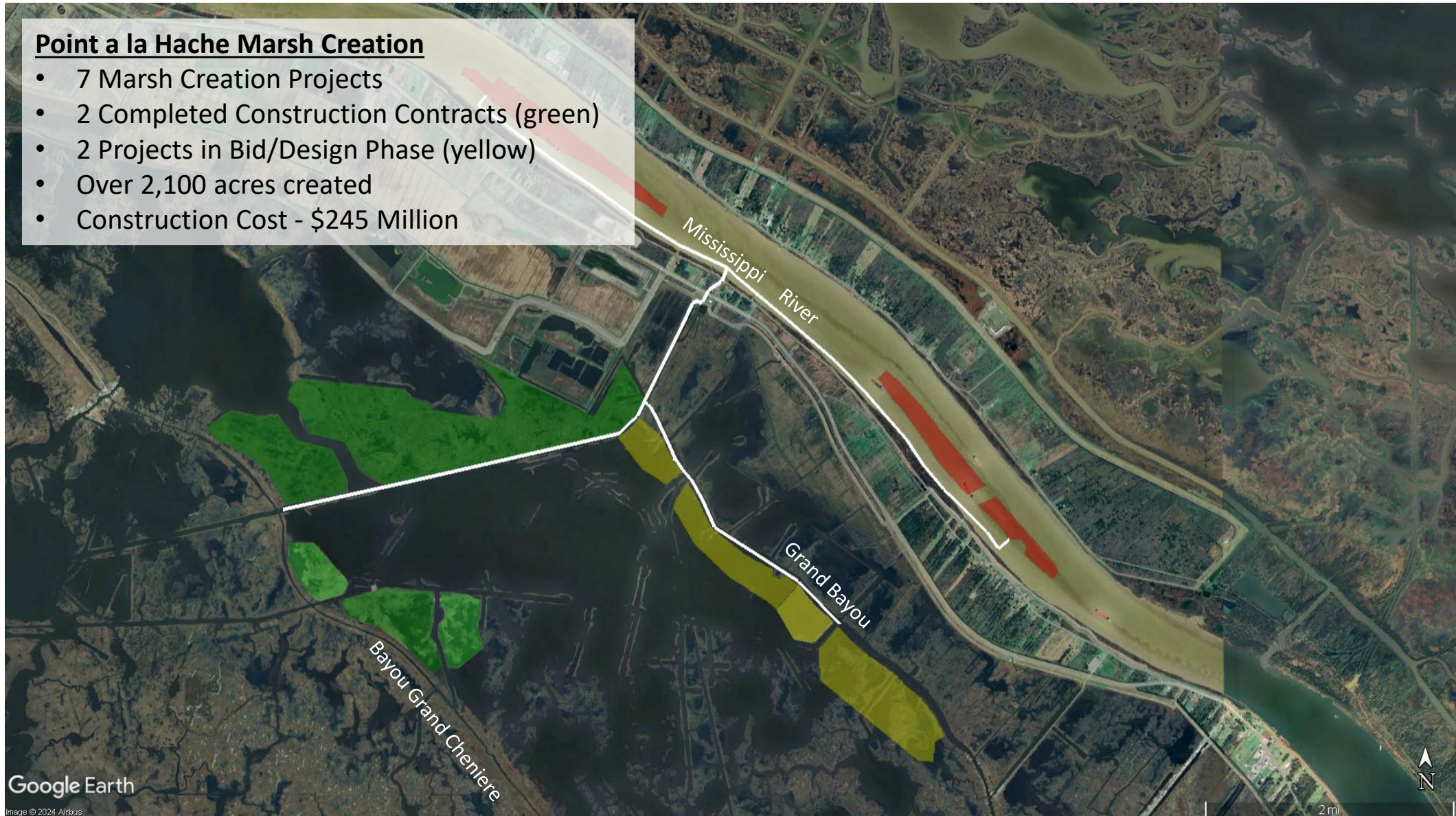
Mississippi River Dredging – Point a la Hache



Mississippi River Dredging – Point a la Hache

Point a la Hache Marsh Creation

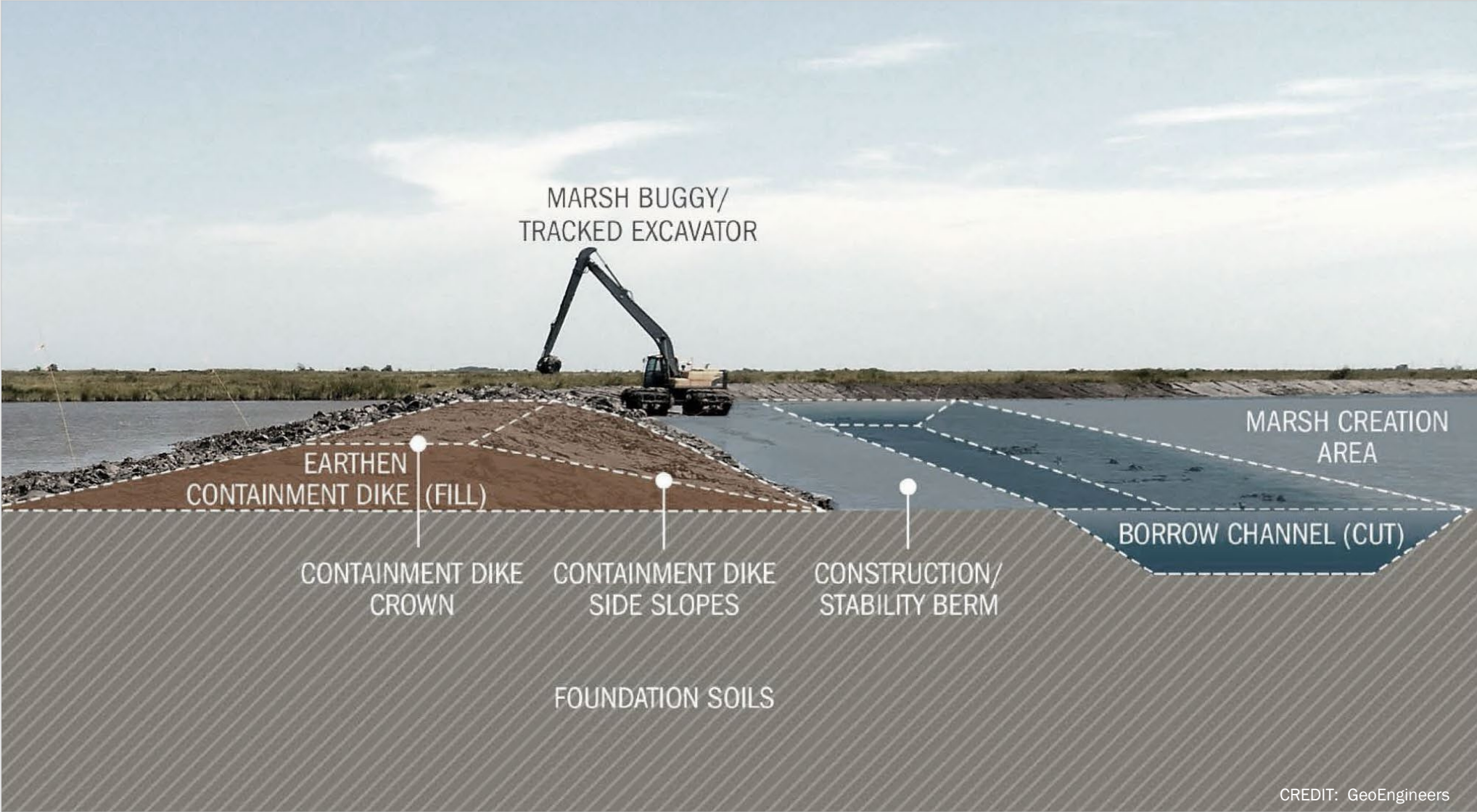
- 7 Marsh Creation Projects
- 2 Completed Construction Contracts (green)
- 2 Projects in Bid/Design Phase (yellow)
- Over 2,100 acres created
- Construction Cost - \$245 Million



The background features a large, faint, circular logo. The logo is divided into two vertical sections. The left section contains a stylized tree with many thin, vertical branches. The right section contains a stylized water container or bucket with a scalloped top edge. The entire logo is rendered in a light blue color against a dark blue background.

PROJECT LOGISTICS

Earthen Containment Dikes



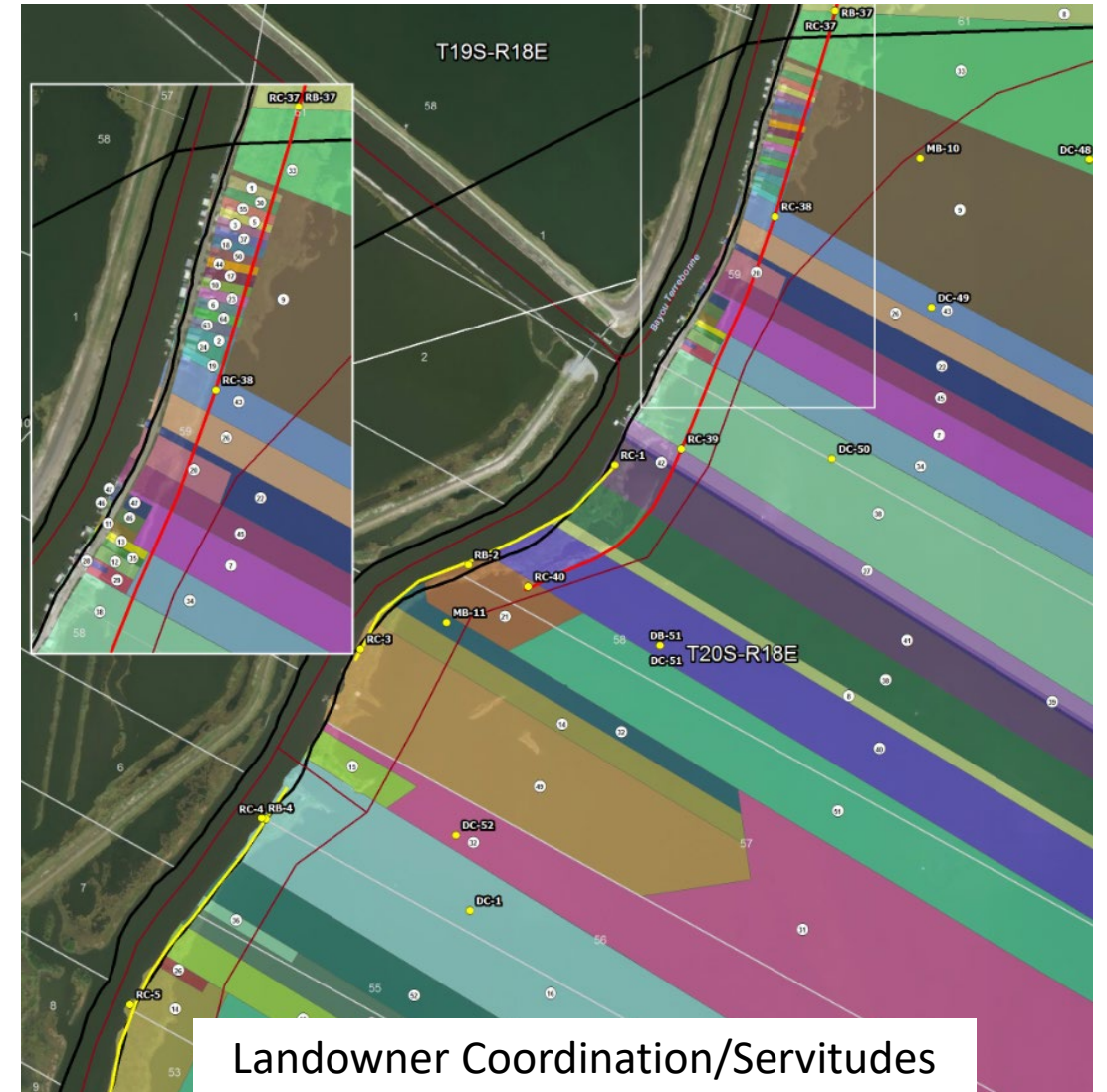
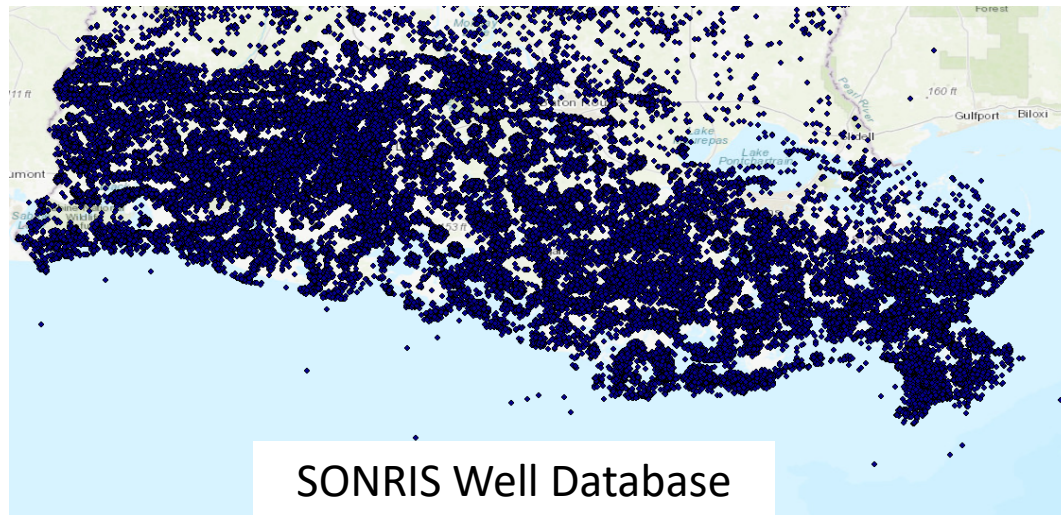
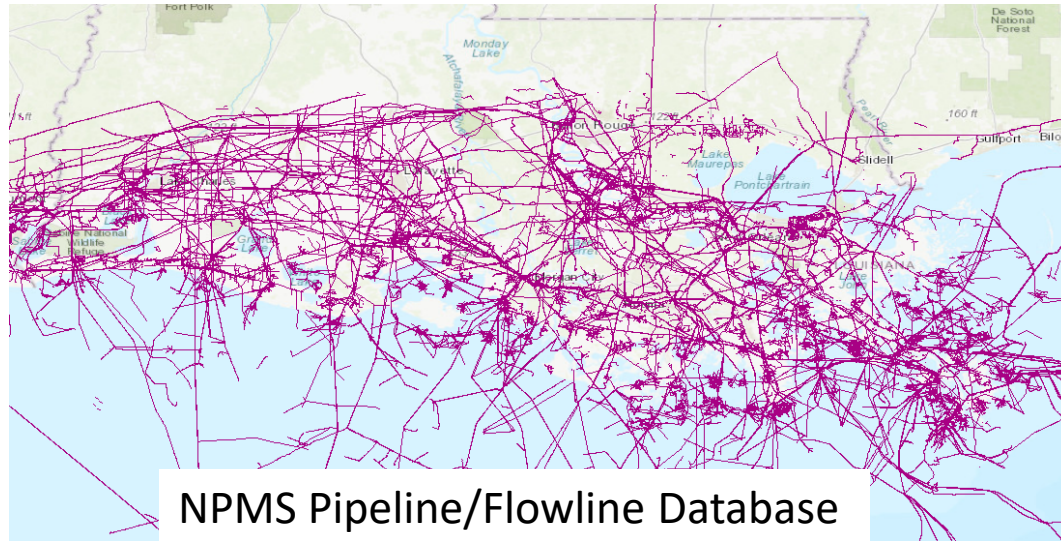
Earthen Containment Dikes



Long Point Bayou Marsh Creation
Cameron Parish



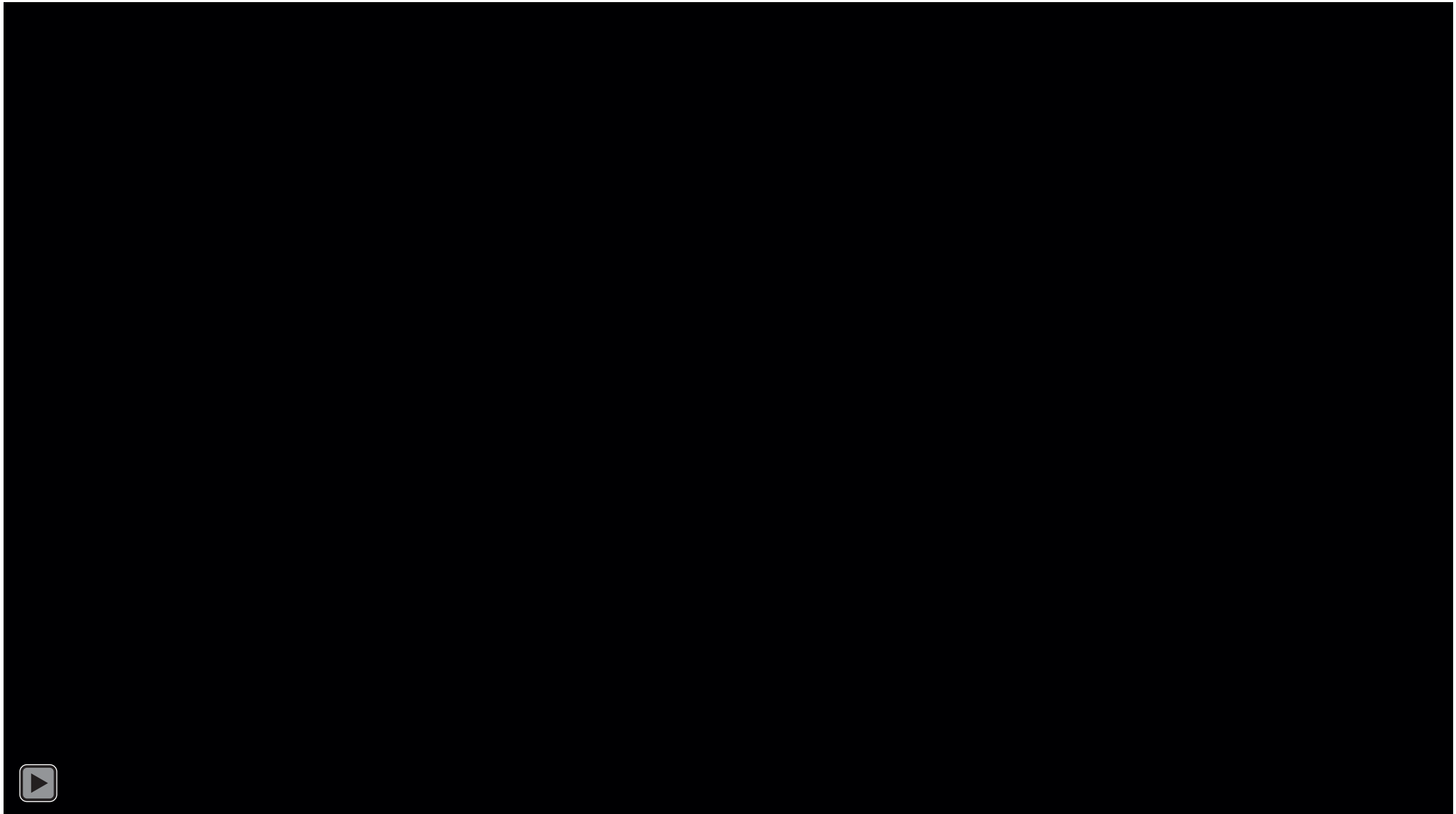
Stakeholder Coordination



Stakeholder Coordination



Stakeholder Coordination



CONNECT WITH US!



@LOUISIANACPRA

