

# Fiscal Year 2025 Annual Plan

INTEGRATED ECOSYSTEM RESTORATION AND  
HURRICANE PROTECTION IN COASTAL LOUISIANA

# CPRA Receives Two Largest Grants Ever Awarded by RESTORE Council



***“ From engineering and designing projects that will safeguard our invaluable natural resources and protect our communities to finding funding streams to move them from concept to construction, the CPRA is working every day for the people of coastal Louisiana. ”***

***CPRA Chairman Gordy Dove***

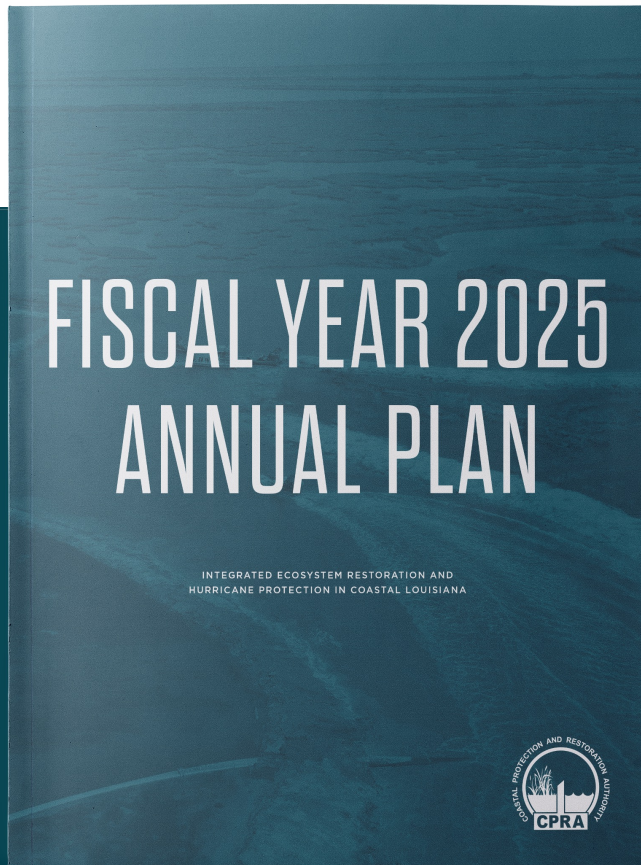
# Timeline

01 / DRAFT ANNUAL PLAN PRESENTED TO CPRA BOARD: DEC. 13, 2023

02 / PUBLIC COMMENT PERIOD ENDS: FEB. 18, 2024

03 / FINAL PLAN PRESENTED TO CPRA BOARD: MARCH 14, 2024

04 / FINAL PLAN TO BE SUBMITTED TO LEGISLATURE: MARCH 19, 2024



PROGRAM	REVENUE/ EXPENDITURE PROJECTIONS
GOMESA	\$170 Million
NRDA	\$544 Million
NFWF	\$192 Million
RESTORE	\$173 Million
Federal (CWPPRA/WRDA)	\$163 Million
State (Non-Surplus)	\$121 Million
State Surplus/Cap Outlay	\$280 Million
Other	\$69 Million

# Total Projected Revenues & Expenditures FY 2025

BY FUNDING PROGRAM

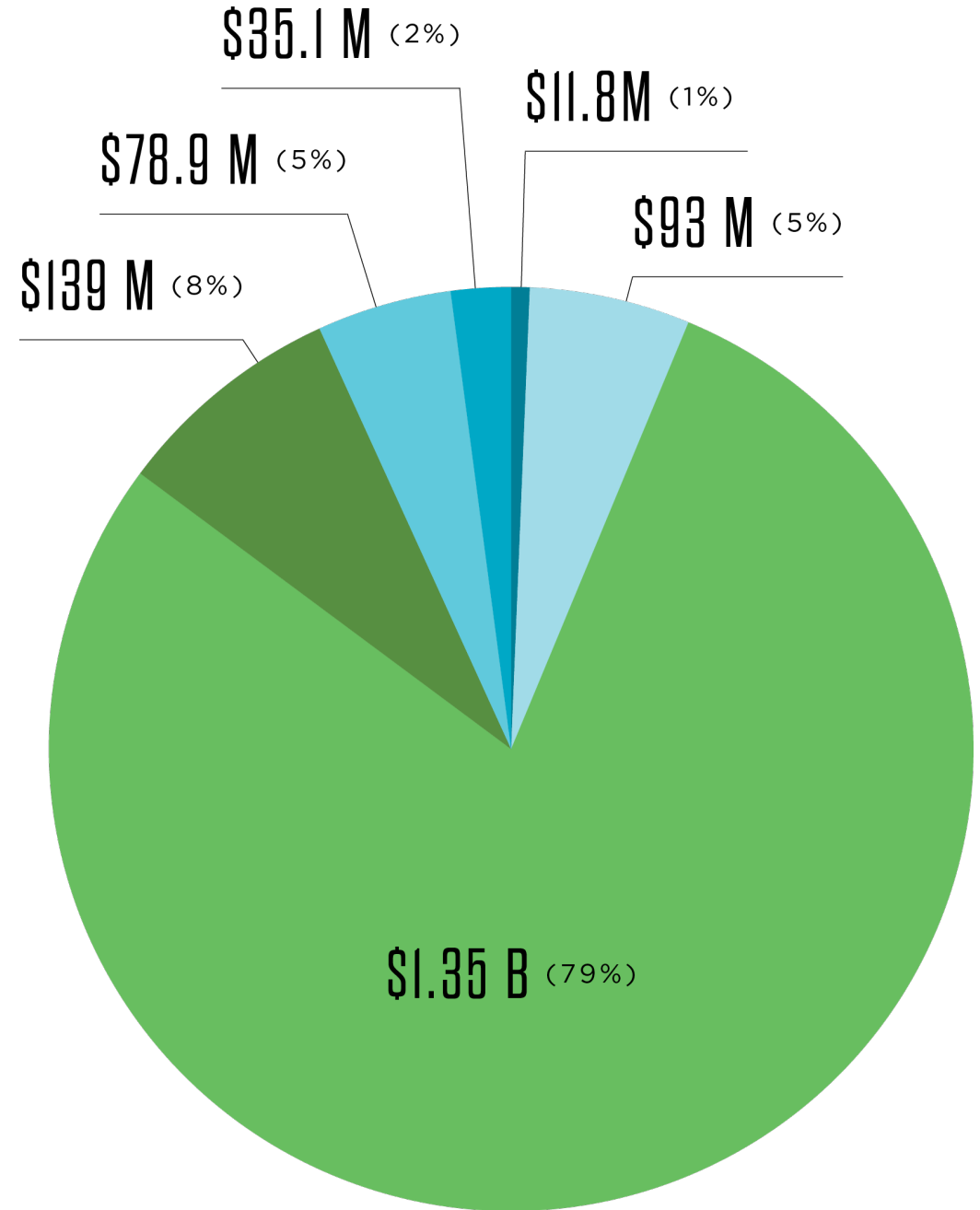
# Total Projected Expenditures FY 2025

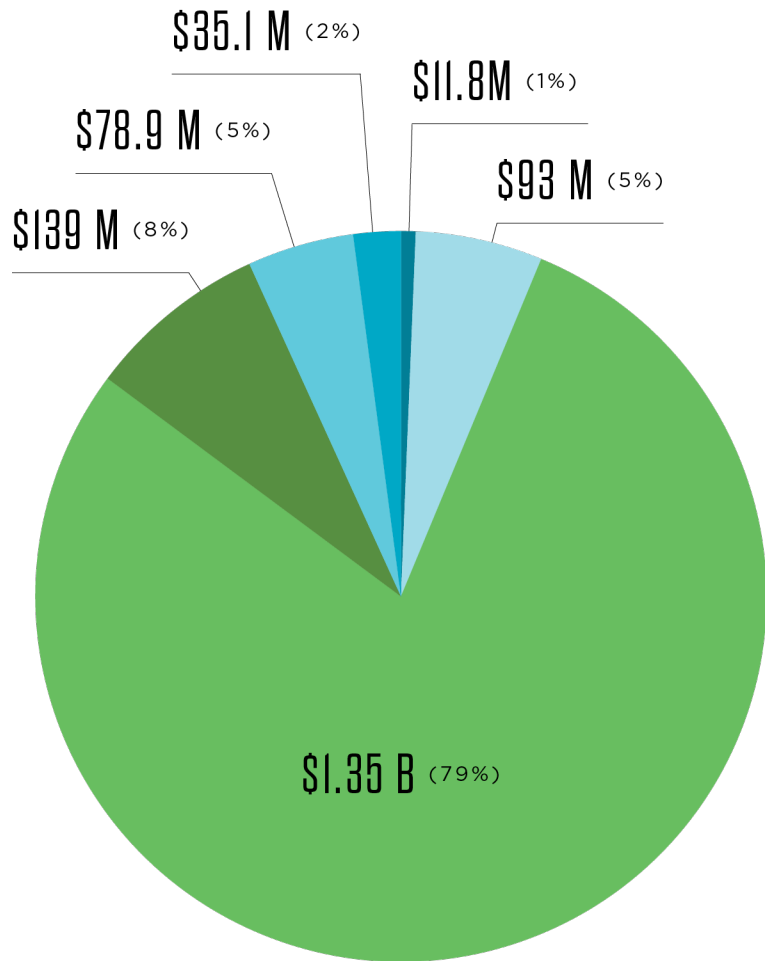
## BY PROJECT PHASE

- Planning
- Engineering & Design
- Construction
- Operation, Maintenance & Monitoring
- Ongoing Programs & Initiatives
- Operating Costs

FY 2025 TOTAL EXPENDITURES

**\$1.71 BILLION**

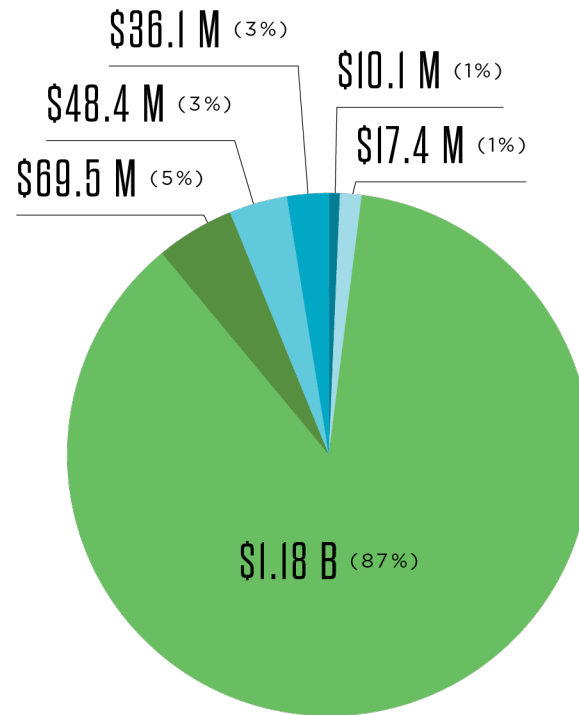




FY 2025 TOTAL EXPENDITURES

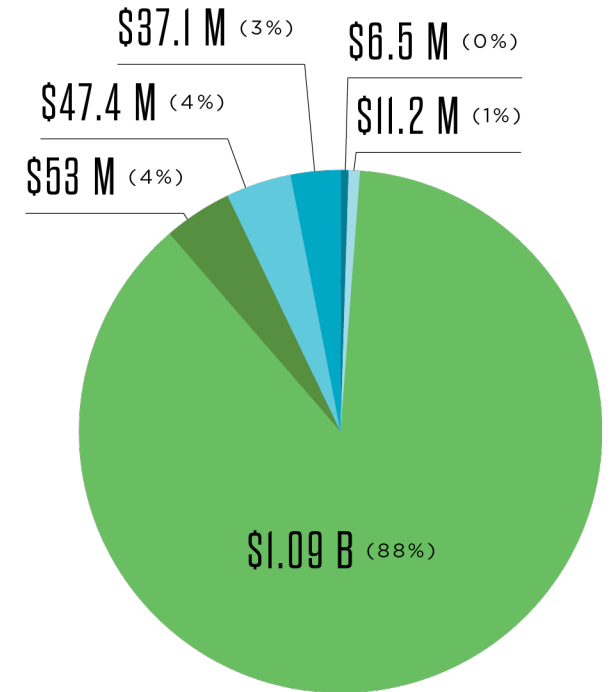
**\$1.71 BILLION**

- Planning
- Engineering & Design
- Construction
- Operation, Maintenance & Monitoring
- Ongoing Programs & Initiatives
- Operating Costs



FY 2026 TOTAL EXPENDITURES

**\$1.36 BILLION**



FY 2027 TOTAL EXPENDITURES

**\$1.25 BILLION**

# Public Outreach

## PUBLIC MEETINGS

- Jefferson Parish 1/10
- Virtual 1/18
- Houma 1/31
- Lake Charles 2/1

150+ TOTAL ATTENDEES

30 PUBLIC COMMENTS RECEIVED



# \$1.71 BILLION

INVESTMENT IN OUR COAST

\$1.35 BILLION ALLOCATED FOR CONSTRUCTION

# 19 DREDGING PROJECTS

SLATED FOR  
CONSTRUCTION  
TOTALING

6.91 MILLION CUBIC YARDS  
OF SEDIMENT TO CREATE OR NOURISH MORE THAN

# 12,770 ACRES

# 136 ACTIVE PROJECTS

93% PROJECT  
ASSOCIATED  
EXPENDITURES

PLANNING

6 PROJECTS • \$11.8 MILLION

ENGINEERING & DESIGN

45 PROJECTS • \$93 MILLION

CONSTRUCTION

83 PROJECTS

\$1.35 BILLION

167,481 ACRES BENEFITED

121 MILES OF LEVEE

OM&M

190  
COMPLETED  
PROJECTS

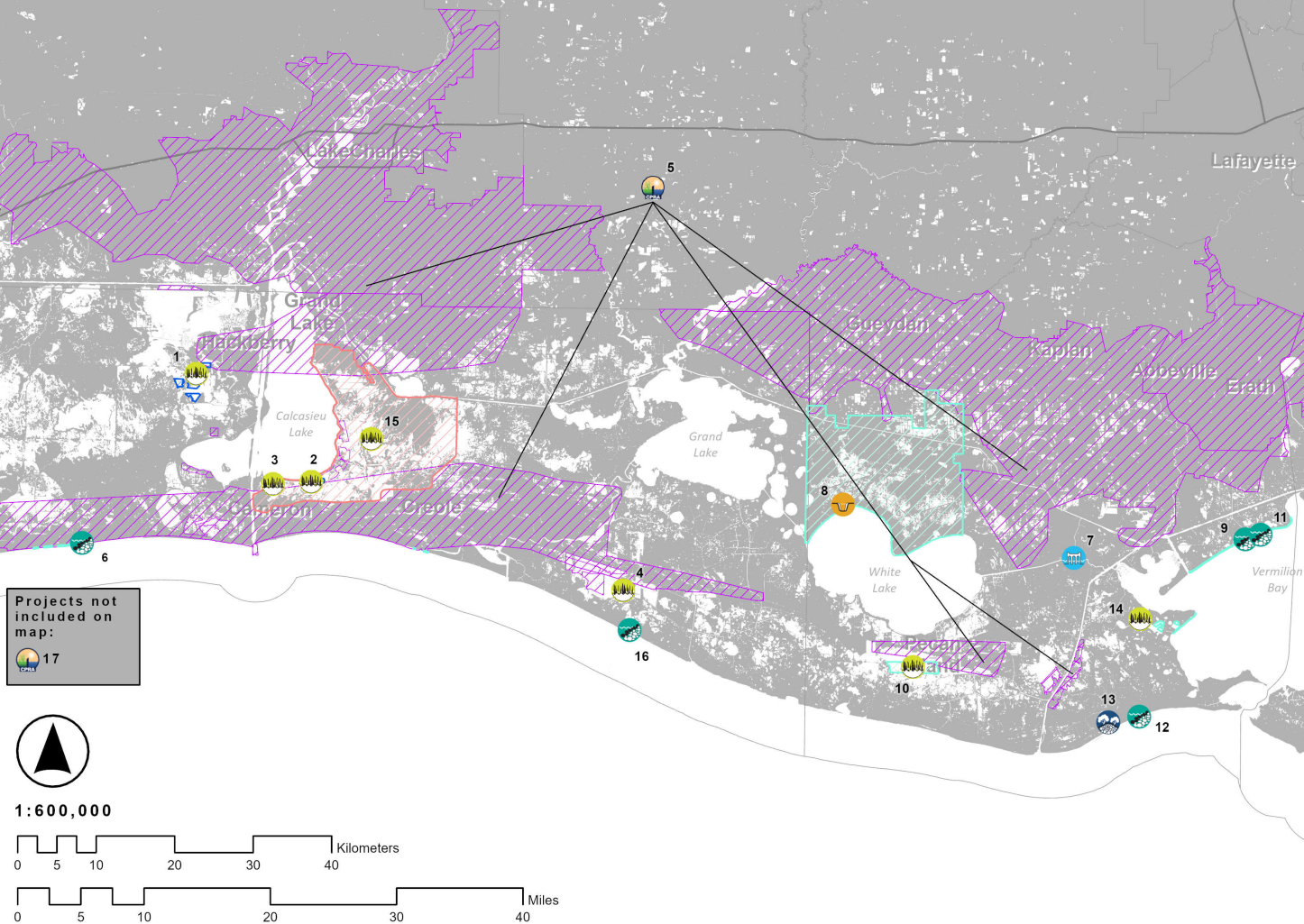
\$138 MILLION

PROJECTS  
WILL  
SUPPORT

# 11,312 DIRECT JOBS

# \$670 MILLION IN LABOR INCOME





**PROJECTS IN CONSTRUCTION:**

- 3 No Name Bayou Marsh Creation & Nourishment
- 5 Southwest Coastal Louisiana
- 6 Cameron Gulf Shoreline Protection
- 9 North Vermilion Bay Shoreline Protection
- 12 Cheniere Au Tigre Shoreline Protection Gap Closure
- 13 Cheniere Au Tigre Ridge Restoration
- 15 Calcasieu-Sabine Large-Scale Marsh and Hydrologic Restoration
- 16 Rockefeller Shoreline Protection-RESTORE Parish Matching

# Southwest Region

**17 ACTIVE PROJECTS: 8 IN CONSTRUCTION, 8 IN E&D, 1 IN PLANNING**

**September 2023**

# Long Point Bayou Marsh Creation

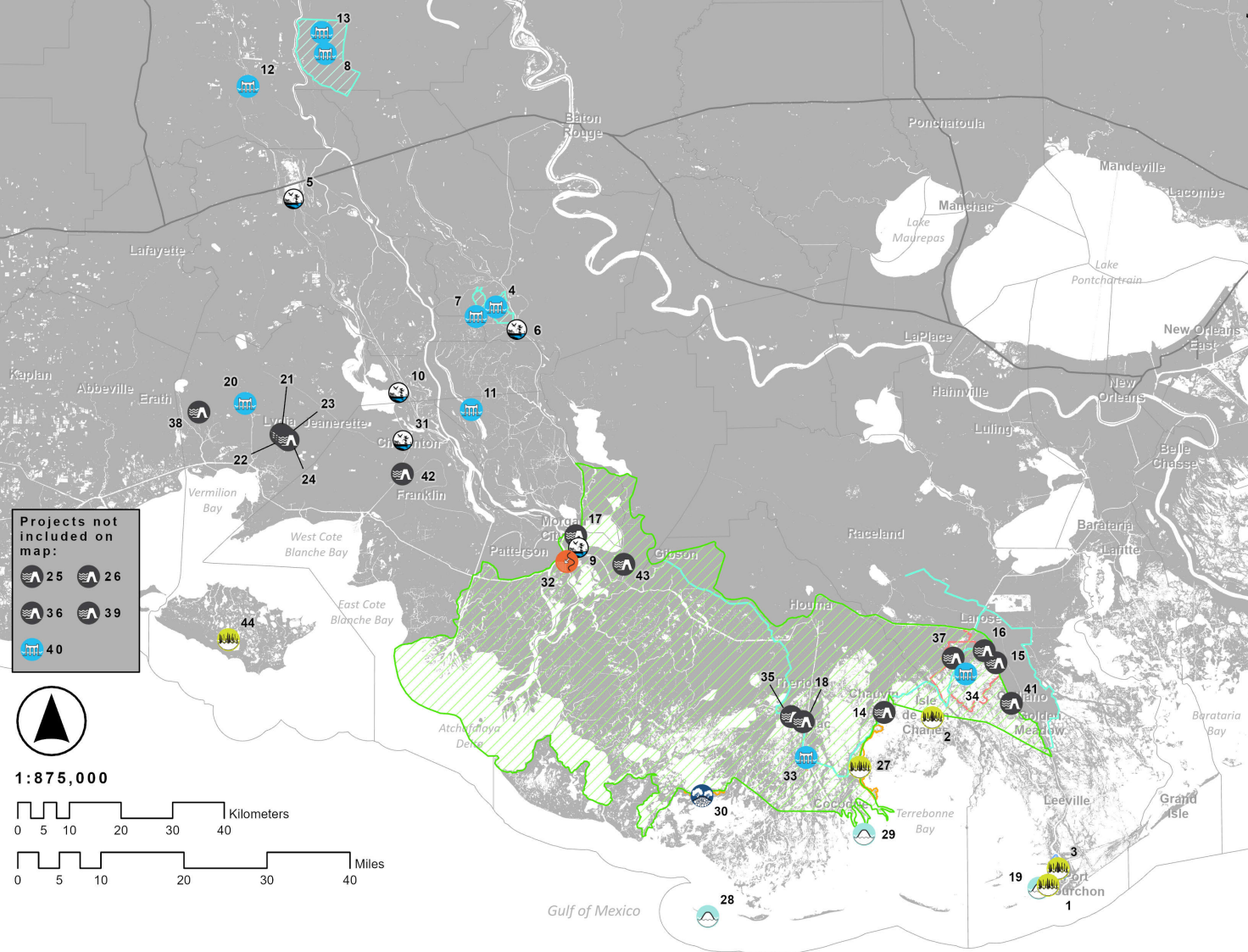




# Freshwater Bayou Shoreline Protection

# Calcasieu-Sabine Large Scale Marsh Creation & Hydrologic Restoration Project



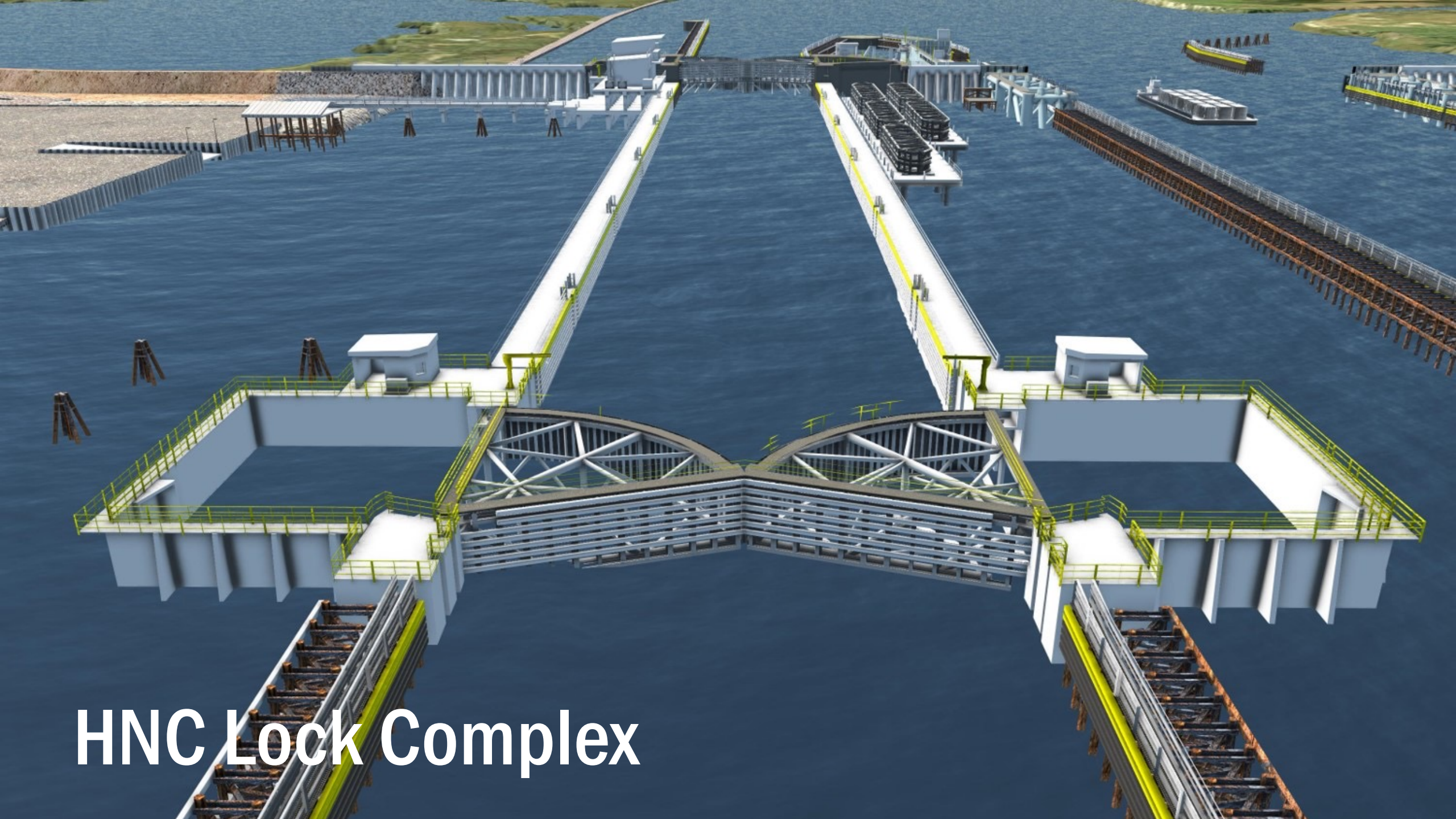


**PROJECTS IN CONSTRUCTION:**

- 2 Island Road Marsh Creation and Nourishment
- 3 West Fourchon Marsh Creation
- 4 East Grand Lake Upper Region
- 5 Boy Scouts of America Swamp Base Boat Launch
- 6 Bayou Pigeon Boat Launch
- 8 Point Coupee Drainage Improvements
- 14 Morganza to the Gulf
- 15 Larose to Golden Meadow System Improvements
- 16 Reach L Mitigation
- 18 MTG Levee Improvements- TLCD
- 19 West Belle Headland Repairs
- 20 Rodere Canal Water Control Structure
- 21 Little Valley Bayou Flood Protection Project
- 22 George Lancon Flood Protection Project
- 23 Rutton Rill Road Flood Protection Project
- 24 Stumpy Bayou Flood Protection Project
- 27 Terrebonne Basin Ridge and Marsh Creation- Bayou Terrebonne Increment
- 29 Terrebonne HNC Island Restoration
- 30 Bayou Dularge Ridge and Marsh Creation
- 31 Chitimacha Boat Launch
- 33 Houma Navigation Canal Lock Complex
- 35 MTG Reach E Levee Lift
- 37 Grand Bayou Pump Station
- 38 Jefferson Canal Flap Gate
- 41 Section A West Improvements
- 42 Bayou Teche Floodgate

# South Central Region

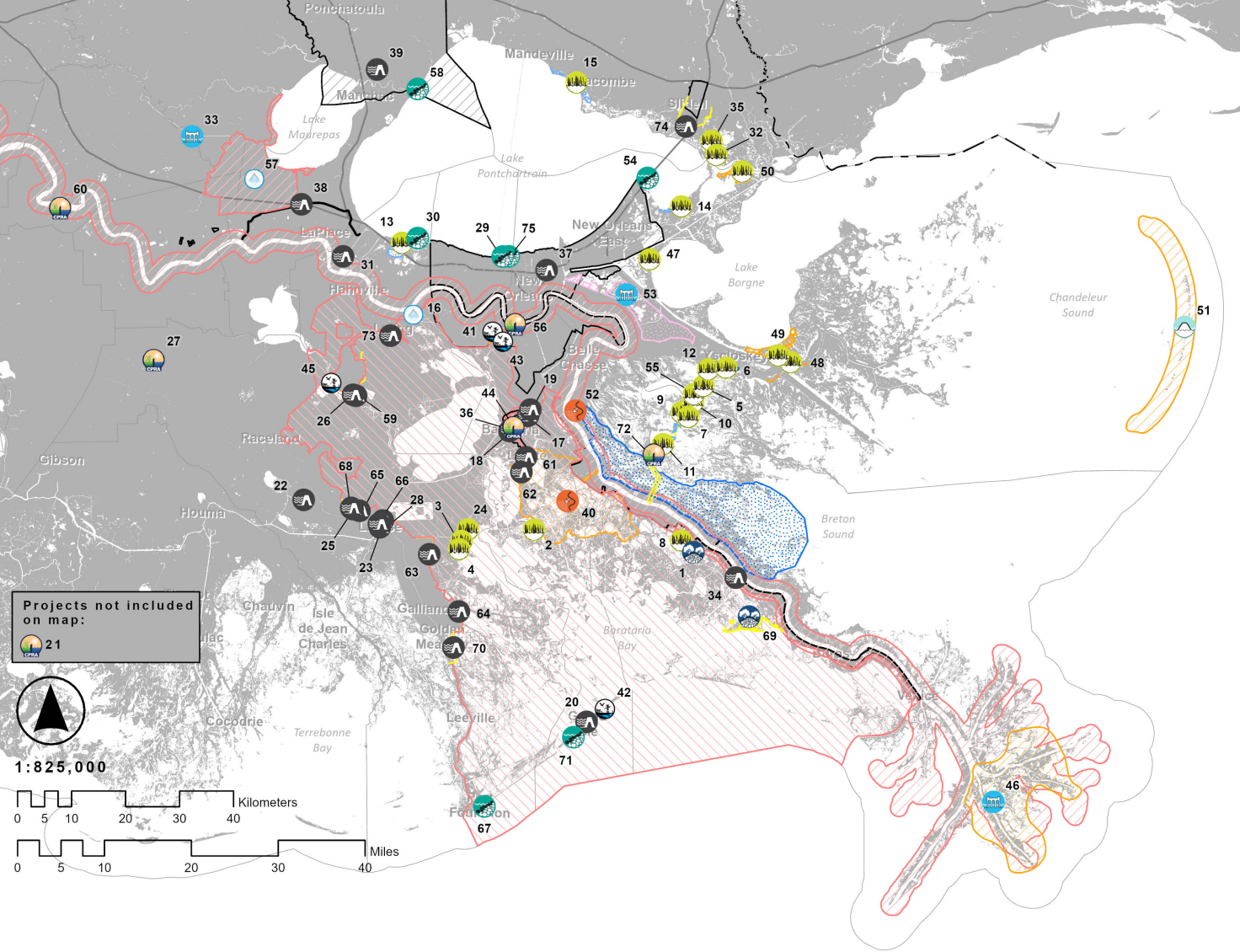
**44 ACTIVE PROJECTS: 26 IN CONSTRUCTION, 15 IN E&D, 3 IN PLANNING**



# HNC Lock Complex

# Elliot Jones Pump Station





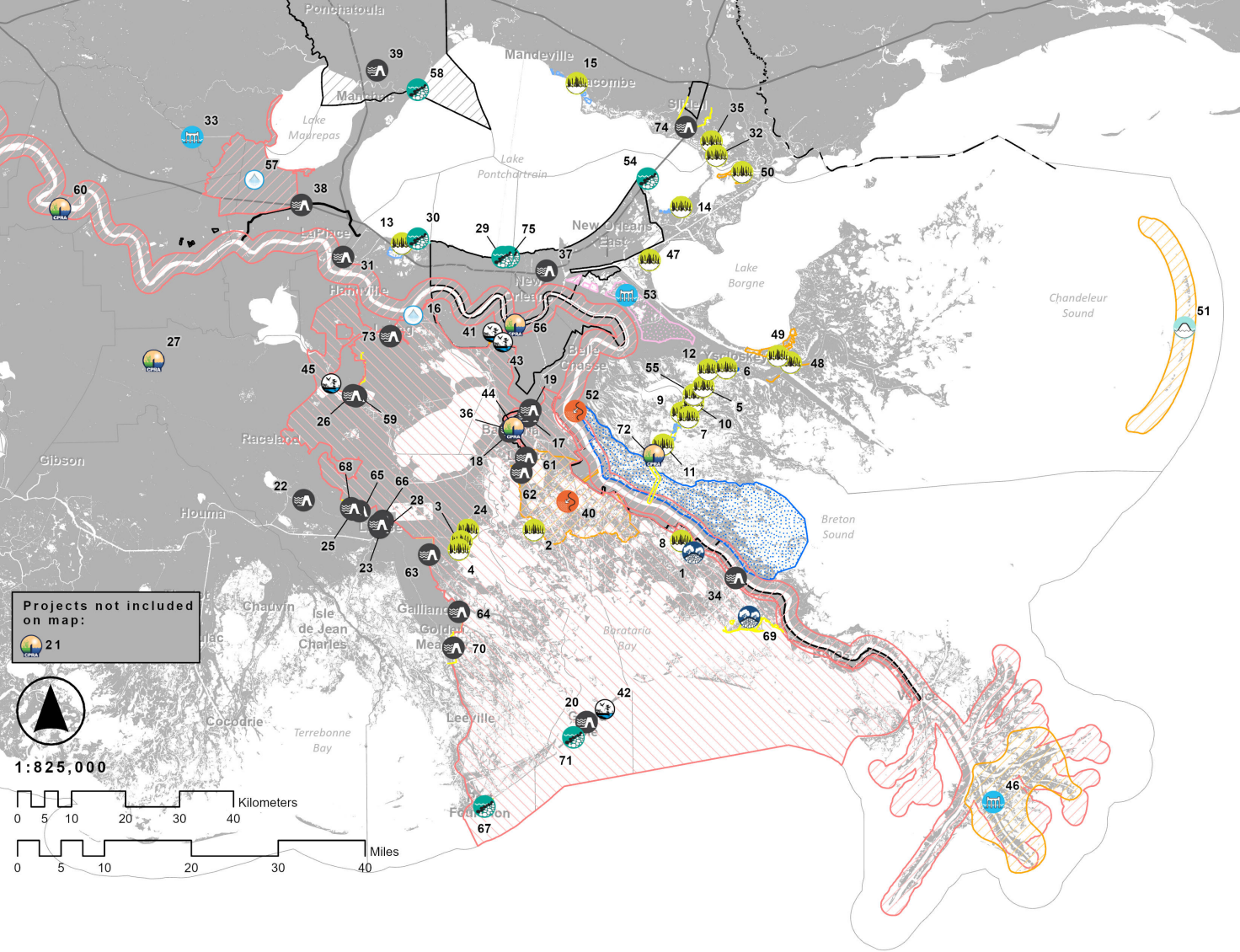
PROJECTS IN CONSTRUCTION:

- 8 Grand Bayou Ridge and Marsh Creation
- 9 Mid Breton Land Bridge Marsh Creation & Terracing
- 10 East Delacroix Marsh Creation and Terracing
- 11 Breton Landbridge Marsh Creation (West)
- 12 Reggio Marsh Creation & Terracing
- 13 LaBranche East Marsh Creation 1
- 14 St. Catherine Island Marsh Creation & Shoreline Restoration
- 15 Bayou Cane Marsh Creation
- 17 Rosethorne Tidal Protection
- 18 Paillet Basin Tidal Protection
- 19 Crown Point Tidal Protection
- 21 Plaquemines Parish Drainage Improvements
- 22 Lockport to Larose Reach B1
- 23 Ted Gisclair Lock Structure
- 25 MTG Levee Improvements- NLLD
- 26 St. Charles Parish Crawford Canal/Sunset Pump Station
- 27 Sugar Ridge Pump Station
- 28 Industrial Park Avenue Improvements
- 29 Jefferson Parish Bucktown Living Shoreline Protection
- 30 LaBranche Shoreline Protection
- 31 Montz Pump Station
- 34 New Orleans to Venice
- 35 New Orleans to Venice Mitigation - Plaquemines Non-Federal
- 37 SELA- Overall
- 38 West Shore-Lake Pontchartrain, Louisiana Hurricane Protection
- 40 Mid-Barataria Sediment Diversion

# Southeast Region

75 ACTIVE PROJECTS: 49 IN CONSTRUCTION, 22 IN E&D, 4 IN PLANNING





**PROJECTS IN CONSTRUCTION:**

- 41 Bayou Segnette State Park Improvements
- 42 Grand Isle State Park Improvements
- 43 WHARF Phase 1
- 44 Louisiana Wetlands Education Center
- 45 Des Allemands Boat Launch
- 47 Golden Triangle Marsh Creation
- 48 Bayou LaLoutre Ridge Restoration and Marsh Creation
- 49 Lake Borgne Marsh Creation- Increment 1
- 55 Lake Lery Marsh Creation (Phase 2)
- 57 River Reintroduction into Maurepas Swamp
- 58 Manchac Landbridge (Rock Breakwater) Shoreline Protection
- 59 Sunset Levee Upper Barataria Risk Reduction (UBRR)
- 60 Pumping Capacity Improvements Phase 1
- 61 Goose Bayou Tidal Protection
- 62 Lower Lafitte Tidal Protection
- 63 Storm Surge Risk Reduction for Reach E-North (SLLD)
- 64 Section D Storm Surge Risk Reduction
- 65 Ludevine Pump Station
- 66 Section F Berm Improvement
- 67 Port Fourchon Shoreline Protection
- 68 MTG Eastern Tie-in Levee Improvements
- 70 Section A East Increment Improvement
- 75 Jefferson Parish Lakefront Shoreline Protection

# Southeast Region

**75 ACTIVE PROJECTS: 49 IN CONSTRUCTION, 22 IN E&D, 4 IN PLANNING**



# Lake Borgne Marsh Creation



# LaBranche Marsh Creation



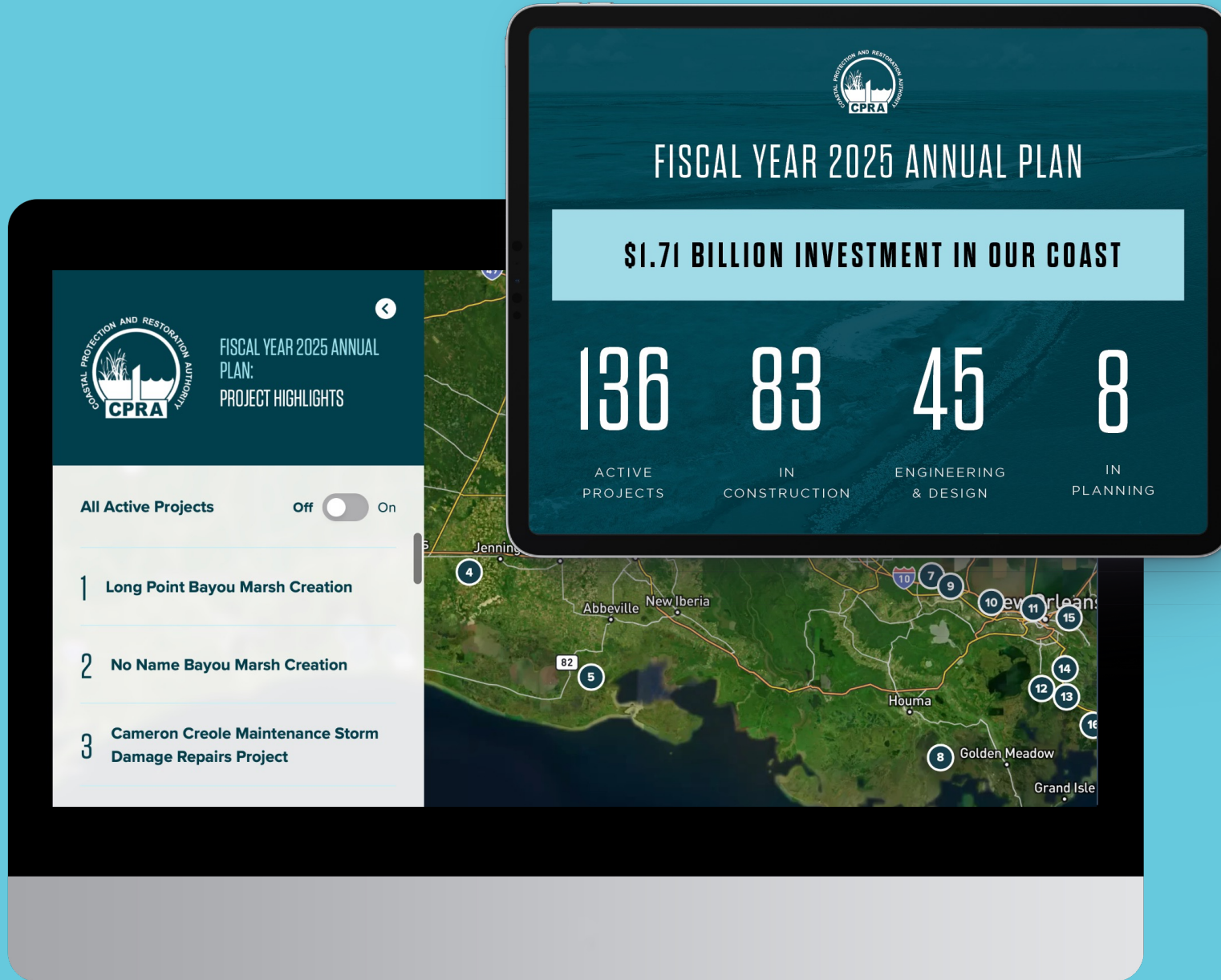
# Atchafalaya Basin Annual Plan

## **WATER QUALITY/WATER MANAGEMENT**

- Dredging in Big Bayou Pigeon
- Grimmert Canal Improvements
- Pointe Coupee Water Flow Improvements
- Murphy Lake Depth Restoration
- East Grand Lake Upper Region

## **RECREATION/ACCESS, OTHER**

- Sandy Cove Boat Launch
- Cajun Coast Welcome Center Trail
- Bayou Pigeon Boat Launch Improvements
- Update to the Atchafalaya Basin Floodway System, Louisiana State Master Plan



# View the FY 2025 Annual Plan & Interactive Map

[AP25.COASTAL.LA.GOV](https://ap25.coastal.la.gov)