

Conservation and Restoration Partnership Fund Program Summary and FY2024 Awards Announcement



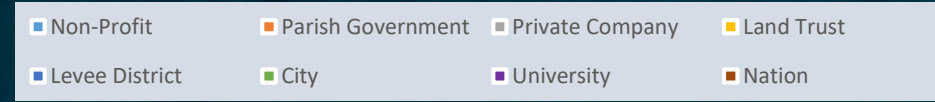
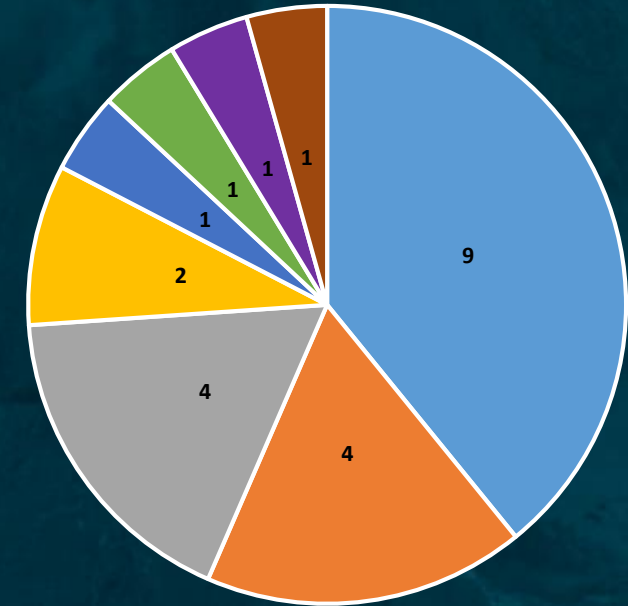
FY24 Conservation and Restoration Partnership Fund Update

- Introduction
- Program Update
- Announce FY24 Program Awards



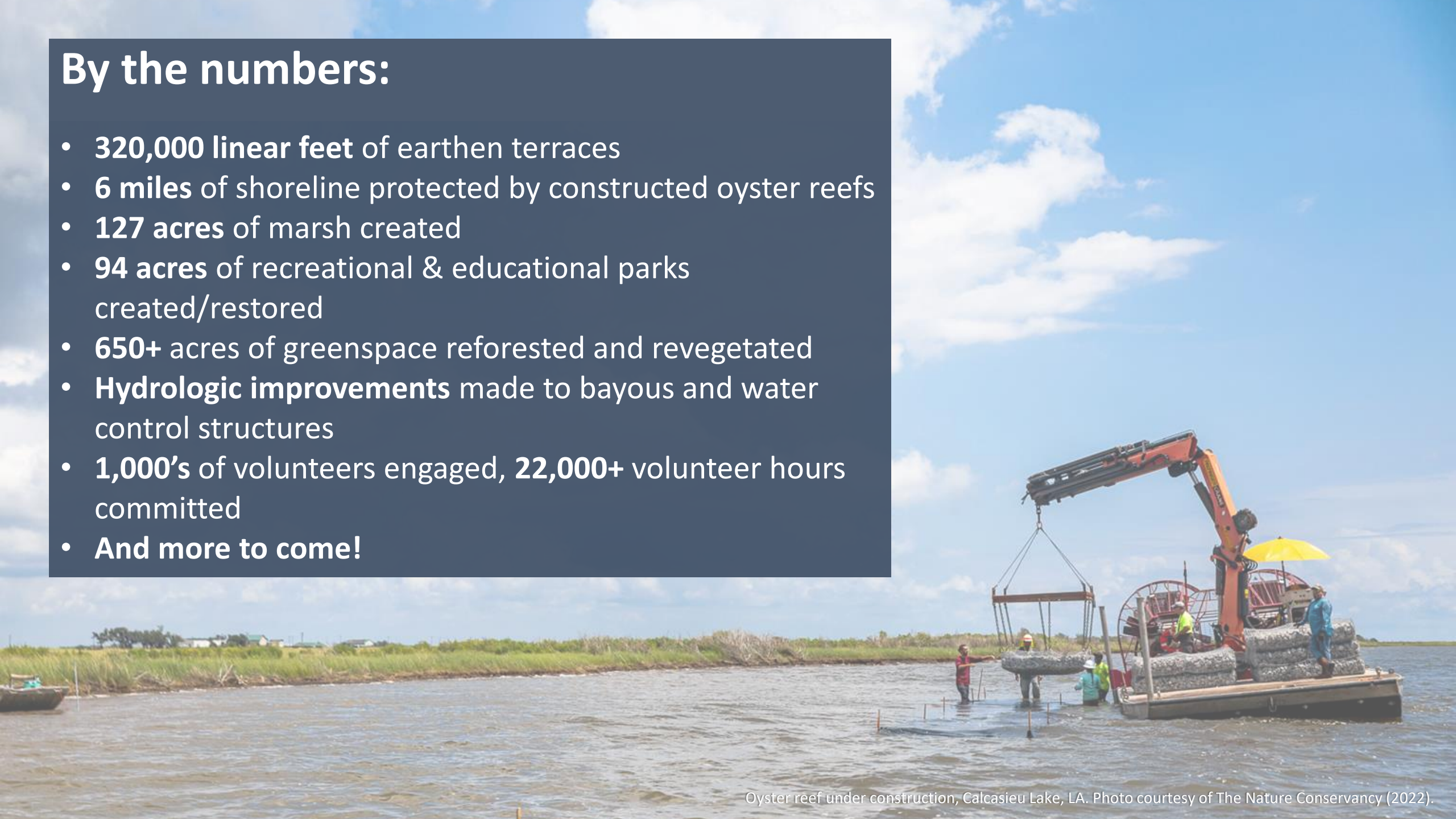
Introduction

- Since 2008, CPRA has contributed over **\$13 million** in funding to **23** non-federal partners and their projects through the Partnership Fund program.
- Over **\$23 million** has been provided as match by partners to leverage a total restoration contribution of nearly **\$37 million**.
- The Partnership Fund is an opportunity to **collaborate** on projects that address restoration and protection needs at the local and regional scale.

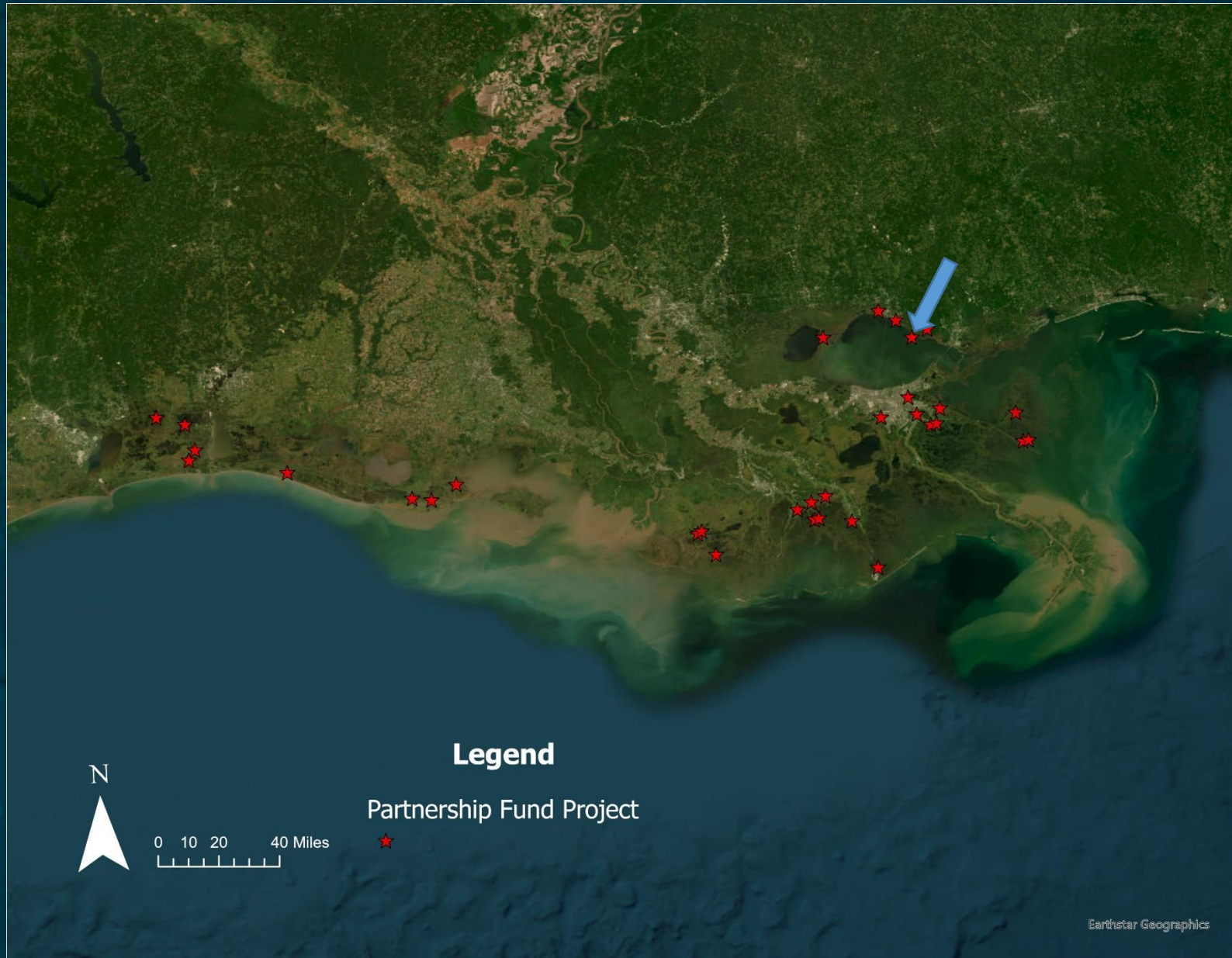


By the numbers:

- **320,000 linear feet** of earthen terraces
- **6 miles** of shoreline protected by constructed oyster reefs
- **127 acres** of marsh created
- **94 acres** of recreational & educational parks created/restored
- **650+** acres of greenspace reforested and revegetated
- **Hydrologic improvements** made to bayous and water control structures
- **1,000's** of volunteers engaged, **22,000+** volunteer hours committed
- **And more to come!**



Past Partnership Fund Awards



Goose Point Marsh Restoration (CRCL)

Problem:

- Hurricane Ida caused a breach at Goose Point that threatened further inundation from Lake Pontchartrain

Objectives:

- Use recycled glass from Glass Half Full to slow wave action and promote sediment retention
- Planted bulrush on the interior to further stabilize the shoreline



*Goose Point Marsh Restoration, June 23, 2023.
Photos courtesy of Mimi Gianfala, CPRA*



Past Partnership Fund Awards



Port Fourchon Terracing and Living Shoreline (Ducks Unlimited)

Problem:

- Marsh deterioration has left the Old Highway 1 and Port Fourchon vulnerable to storms and erosion

Objectives:

- Construct an additional 8,400 linear ft of earthen terraces that will reduce wave action and storm surge
- Enhance approximately 150 acres of existing marsh



Port Fourchon Terraces, 2024. Photo courtesy of Ducks Unlimited, Inc.



FY 2024 Awards



FY24 Conservation and Restoration Partnership Fund

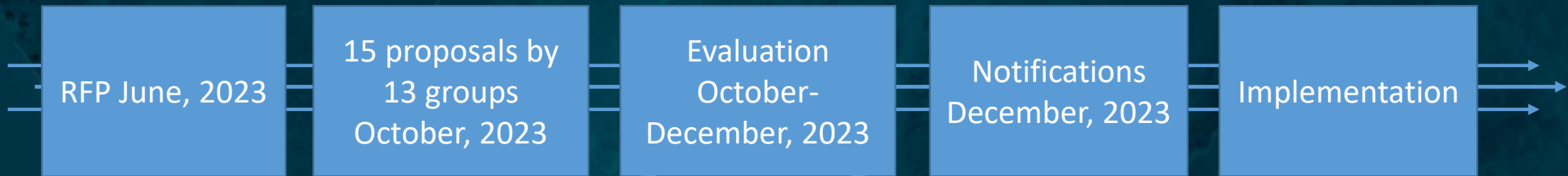
- CPRA is providing \$1,000,000 in matching funds for projects aimed at coastal conservation and restoration
- CPRA uses this program funding to further leverage its funds to achieve its coastal restoration goals



Ridge Habitat Restoration in St. Bernard Parish. Photo courtesy of Pontchartrain Conservancy.



FY24 Conservation and Restoration Partnership Fund Timeline-



- **Proposals were evaluated with these criteria and considerations**
 - Consistent with the goals and objectives of 2023 Master Plan
 - Acreage conserved or restored
 - Synergy with other conservation and restoration efforts
 - Project constructability
 - Matching Funds



FY24 Partnership Fund Selected Projects

Partner and Project Name	Award	Match
Coalition to Restore Coastal Louisiana – Lake Boudreaux Marsh Restoration	\$50,483	\$27,940
Ducks Unlimited – 40 Arpent Canal Wetlands Enhancement II and Port Fourchon Terracing II	\$413,242	\$5,332,227
Pontchartrain Conservancy – Bucktown Marina Habitat Restoration	\$95,936	\$44,000
Restore or Retreat – West Cutoff Levee and West Grand Terre Shoreline Stabilization	\$30,887	\$19,983
The Nature Conservancy – West Cove Oyster Reef Restoration (Phase IV)	\$326,484	\$700,000
Tulane (In Partnership with ReCoast, Common Ground, CRCL, and CSED) – Mitigation of Land Loss by Strengthening Eroding Marsh	\$82,967	\$61,722
Total	\$1,000,000	\$6,185,872



COASTAL PROTECTION AND RESTORATION AUTHORITY

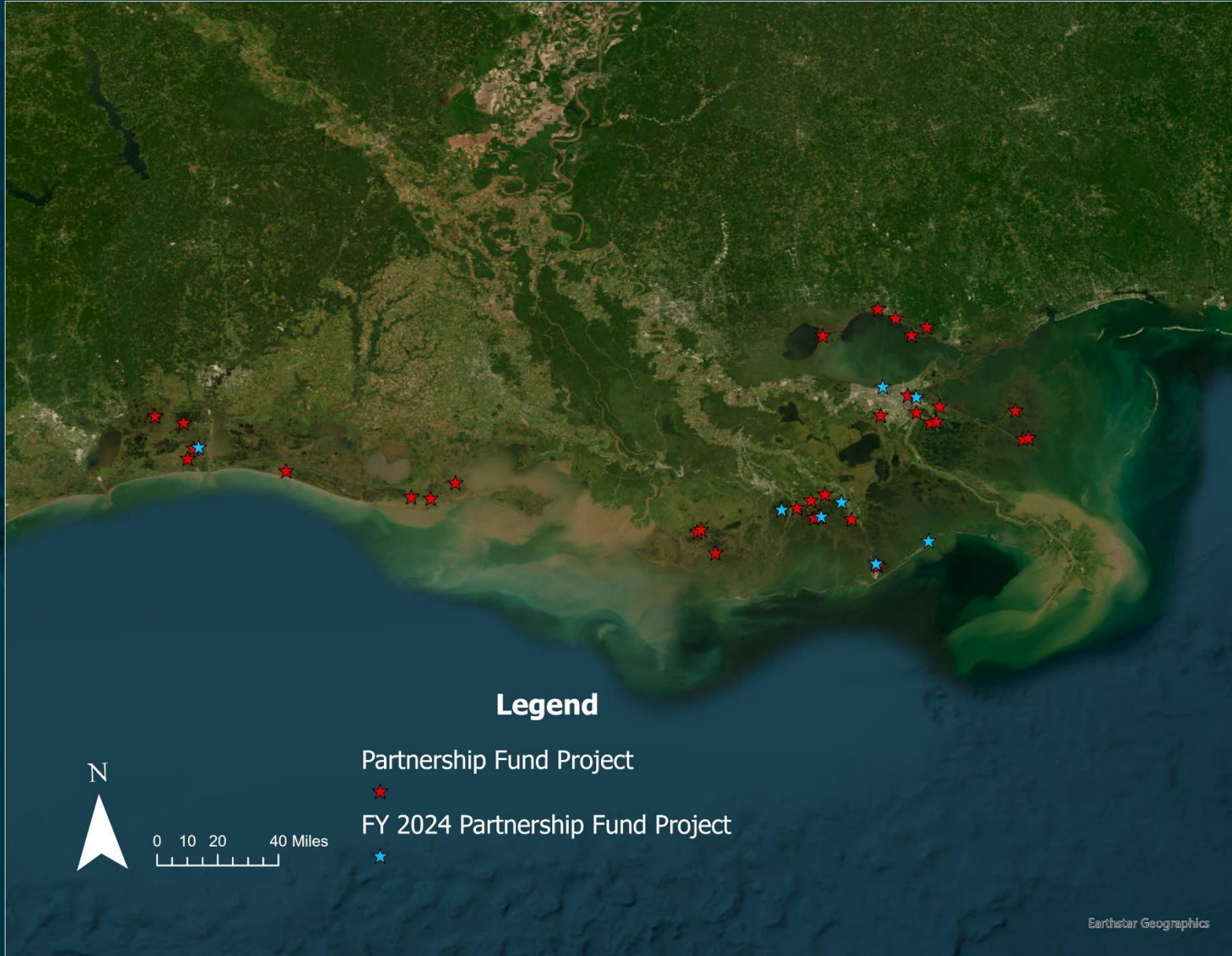




Photo courtesy of The Nature Conservancy- Calcasieu Lake Oyster Reef Restoration Project Phase II

Selected Projects Outcomes Cont.

- 60+ acres of vegetative plantings that will support earthen terraces and levees and enhance habitats including marsh, swamp, barrier islands, coastal forests
- Over 10,000 linear ft of terraces
- 1.5 miles of oyster reef



Contact information

Email

Partnershipfund@la.gov

Phone

Brandon Champagne – 225.342.1452

Kent Bollfrass - 225.342.4733



Calcasieu Lake and Sabine National Wildlife Refuge Shoreline Protection and Oyster Reef Restoration. Photo courtesy of Jessica Converse, CPRA.



COASTAL PROTECTION AND RESTORATION AUTHORITY

CONNECT WITH US!



@LouisianaCPRA

