

Draft Fiscal Year 2025 Annual Plan

INTEGRATED ECOSYSTEM RESTORATION AND
HURRICANE PROTECTION IN COASTAL LOUISIANA



Public Comments

EMAIL

Public comments will be accepted via email to:

coastal@la.gov

MAIL

Written comments will be accepted via mail to:

Annual Plan Comment
150 Terrace Avenue
Baton Rouge, LA 70802

IN-PERSON:

Attend a public meeting to submit comments.

CPRA must receive all comments by February 18, 2024

Timeline

- 01 / Draft Annual Plan Presented to CPRA Board – Dec. 13, 2023
- 02 / Public Comment Period Ends: Feb. 18, 2024
- 03 / Final Annual Plan Presented to CPRA Board – March 13, 2024
- 04 / Final Annual Plan Submitted to Legislature – March 19, 2024



CPRA ANNUAL PLAN PUBLIC HEARINGS:

Jan. 10: Kenner

Jan. 16: Houma

Jan. 17: Lake Charles

Jan. 18: Virtual (1:30pm – 2:30 pm)

Open House: 5:00 pm - 6:00 pm

Presentation: 6:00 pm – 6:30 pm

For full details, visit:

coastal.la.gov/calendar/

PROGRAM	REVENUE PROJECTIONS	EXPENDITURE PROJECTIONS
GOMESA	\$180 Million	\$180 Million
NRDA	\$525 Million	\$525 Million
NFWF	\$198 Million	\$198 Million
RESTORE	\$172 Million	\$172 Million
CWPPRA (Federal)	\$118 Million	\$118 Million
State (Non-Surplus)	\$91 Million	\$91 Million
State (Surplus)	273 Million	273 Million
Other	\$117 Million	\$117 Million

Total Projected Revenues and Expenditures FY 2025

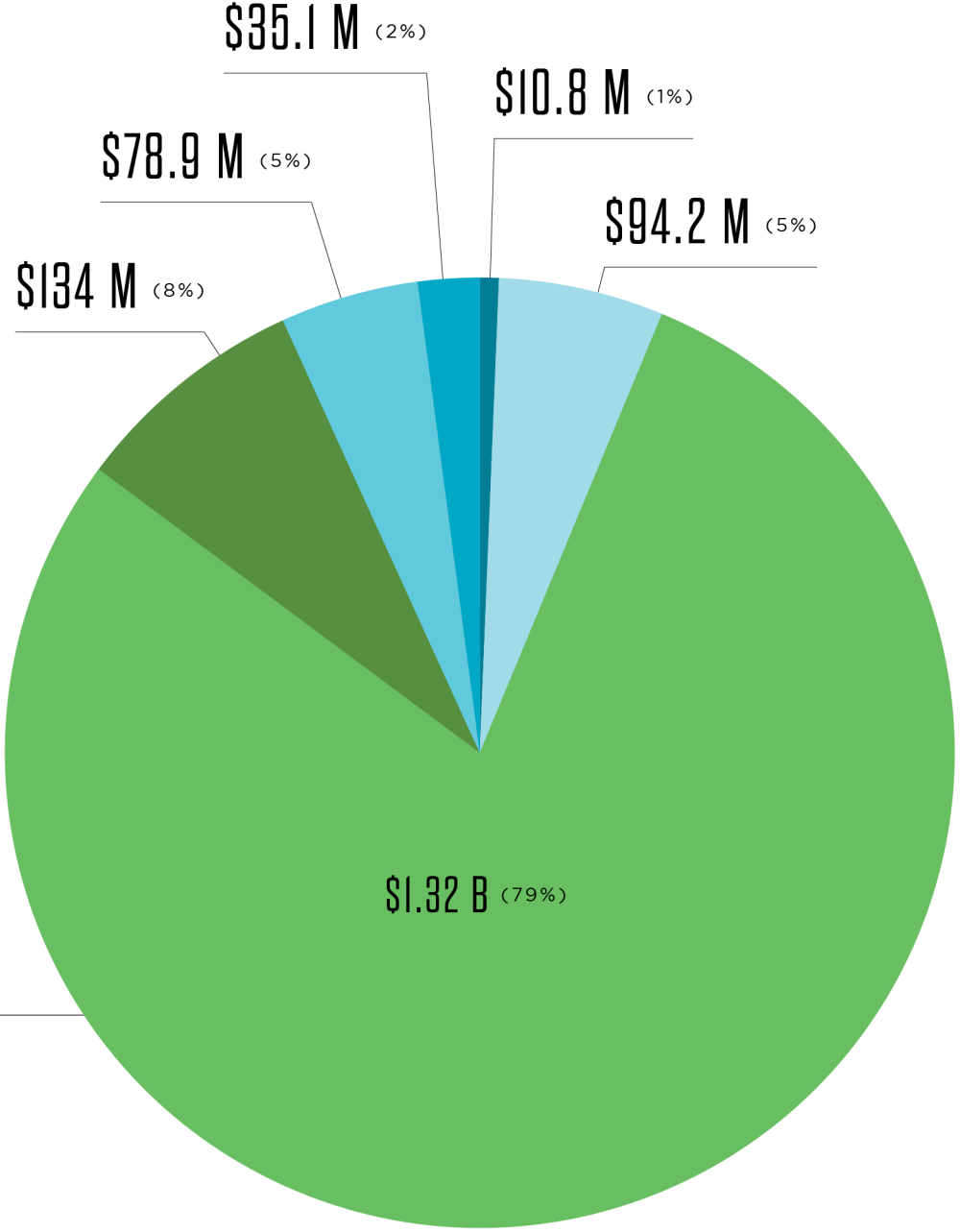
BY FUNDING PROGRAM

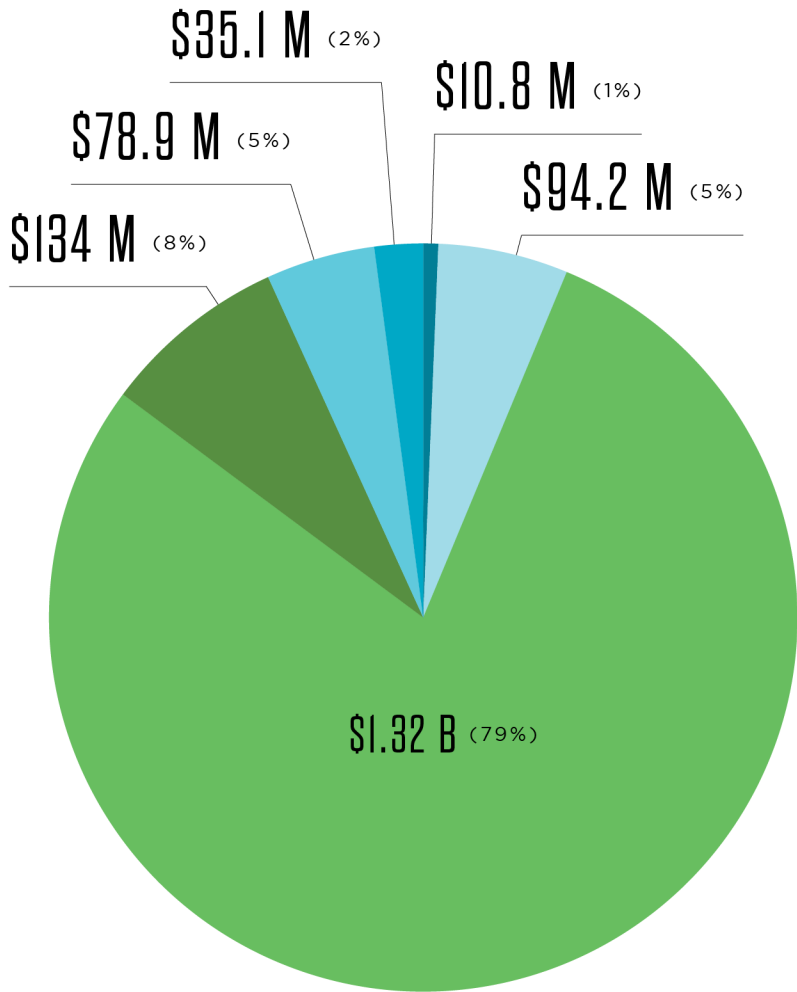
Total Projected Expenditures FY 2025

BY PROJECT PHASE

FY 2025 TOTAL EXPENDITURES

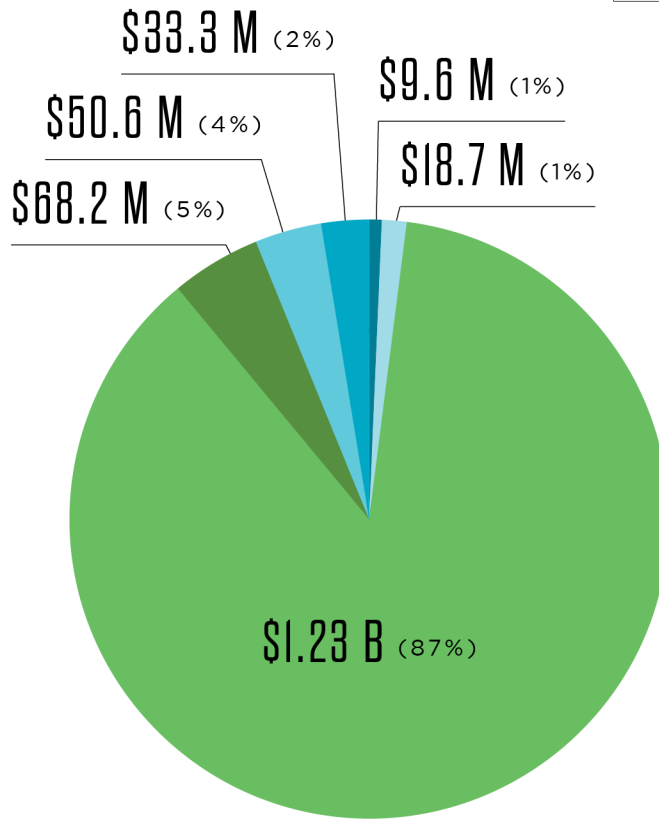
\$1.68 BILLION





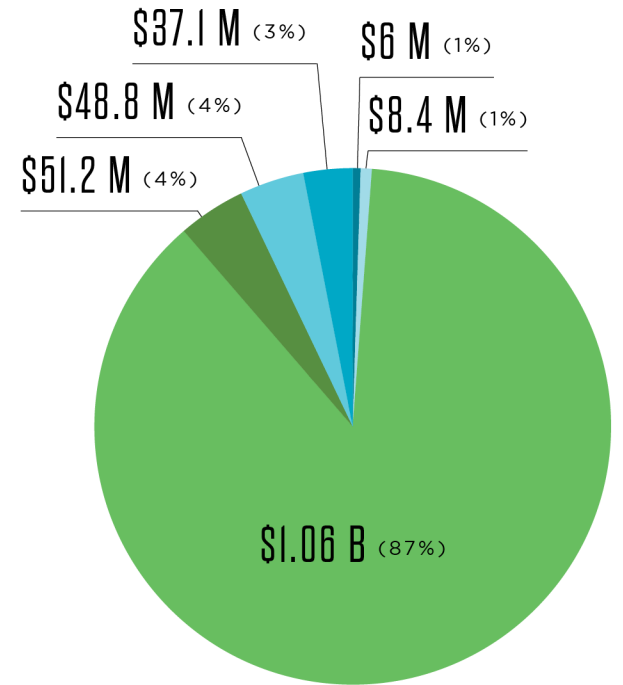
FY 2025 TOTAL EXPENDITURES

\$1.68 BILLION



FY 2026 TOTAL EXPENDITURES

\$1.4 BILLION



FY 2027 TOTAL EXPENDITURES

\$1.21 BILLION



\$1.68 BILLION
INVESTMENT IN OUR COAST

\$1.3 BILLION ALLOCATED FOR CONSTRUCTION

17 DREDGING PROJECTS

SLATED FOR CONSTRUCTION TOTALING **63.8 MILLION CUBIC YARDS** OF SEDIMENT TO CREATE OR NOURISH MORE THAN

11,735 ACRES

121 ACTIVE PROJECTS

93% PROJECT ASSOCIATED EXPENDITURES

PLANNING

6 PROJECTS • \$10.8 MILLION

ENGINEERING & DESIGN

32 PROJECTS • \$94.2 MILLION

CONSTRUCTION

83 PROJECTS

\$1.3 BILLION

166,207 ACRES BENEFITED
121.9 MILES OF LEVEE

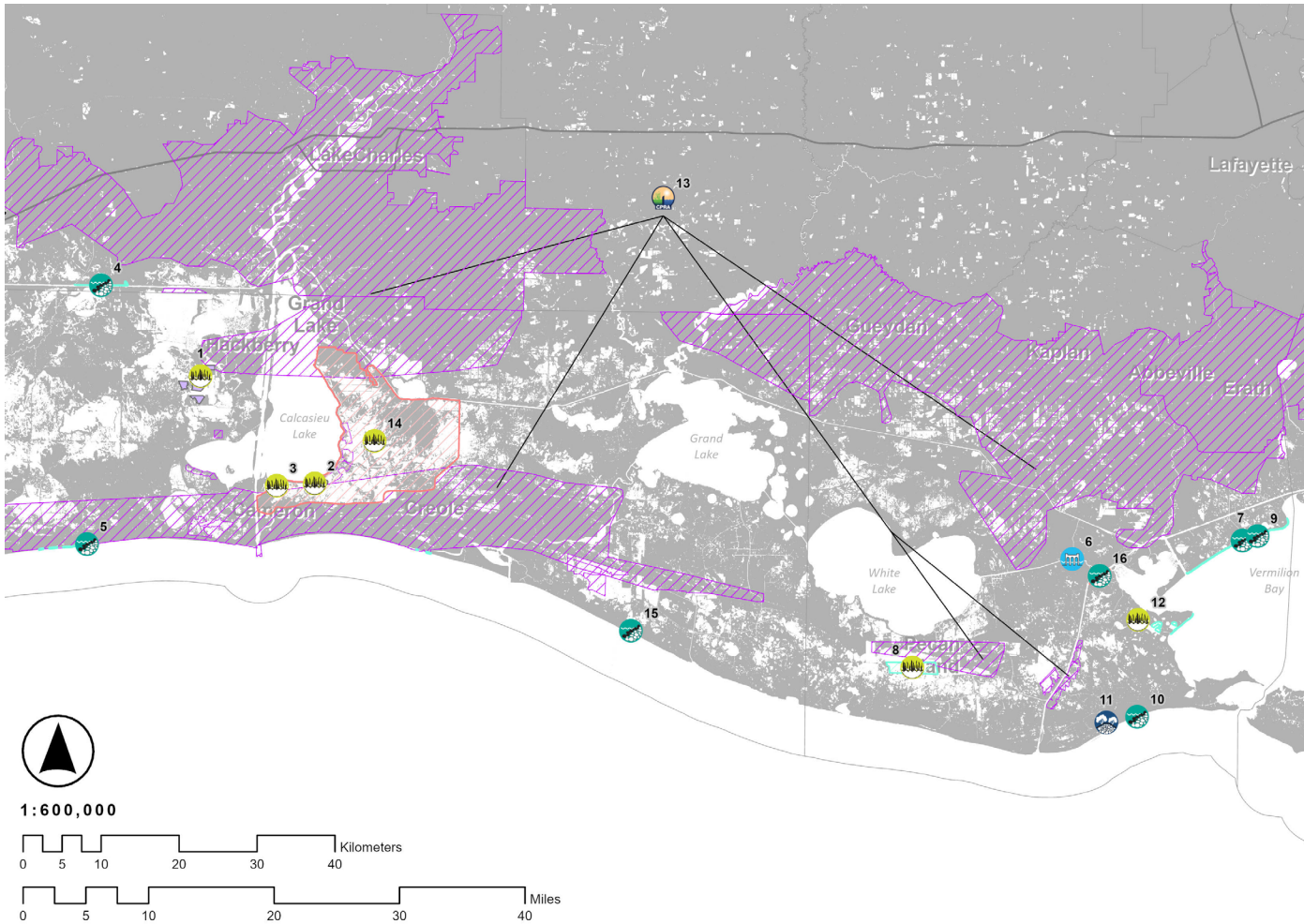
OM&M

190 COMPLETED PROJECTS
\$134 MILLION

PROJECTS WILL SUPPORT

10,983 DIRECT JOBS
\$651 MILLION IN LABOR INCOME





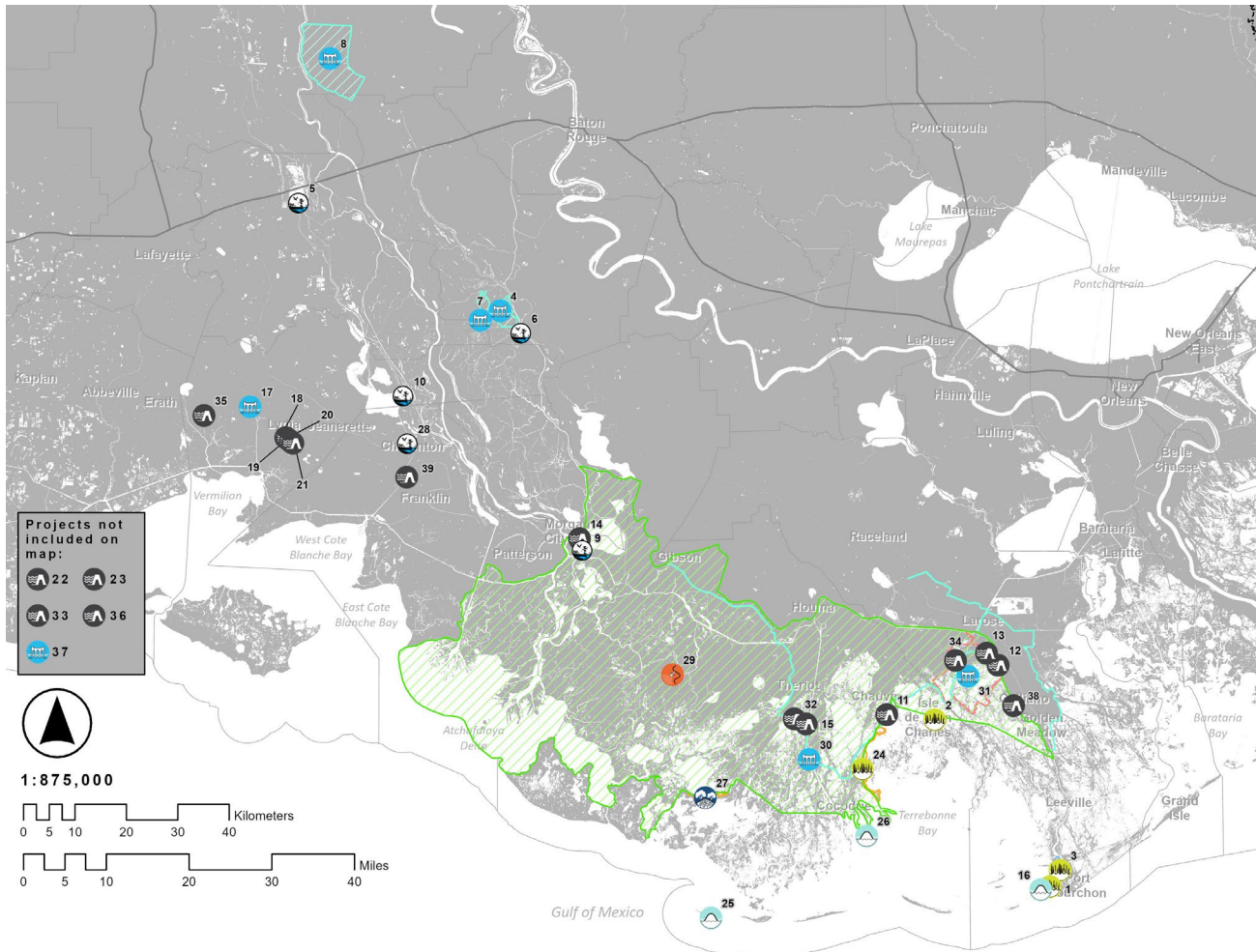
PROJECTS IN CONSTRUCTION:

- 3 No Name Bayou Marsh Creation & Nourishment
- 4 GIWW Shoreline Protection
- 5 Cameron Gulf Shoreline Protection
- 7 North Vermilion Bay Shoreline Protection
- 10 Cheniere Au Tigre Shoreline Protection Gap Closure
- 11 Cheniere Au Tigre Ridge Restoration
- 12 Southwest Coastal Louisiana
- 14 Calcasieu-Sabine Large-Scale Marsh and Hydrologic Restoration
- 15 Rockefeller Shoreline Protection-RESTORE Parish Matching
- 16 Freshwater Bayou Canal Shoreline Protection

Southwest Region

16 ACTIVE PROJECTS: 10 IN CONSTRUCTION, 6 IN E&D





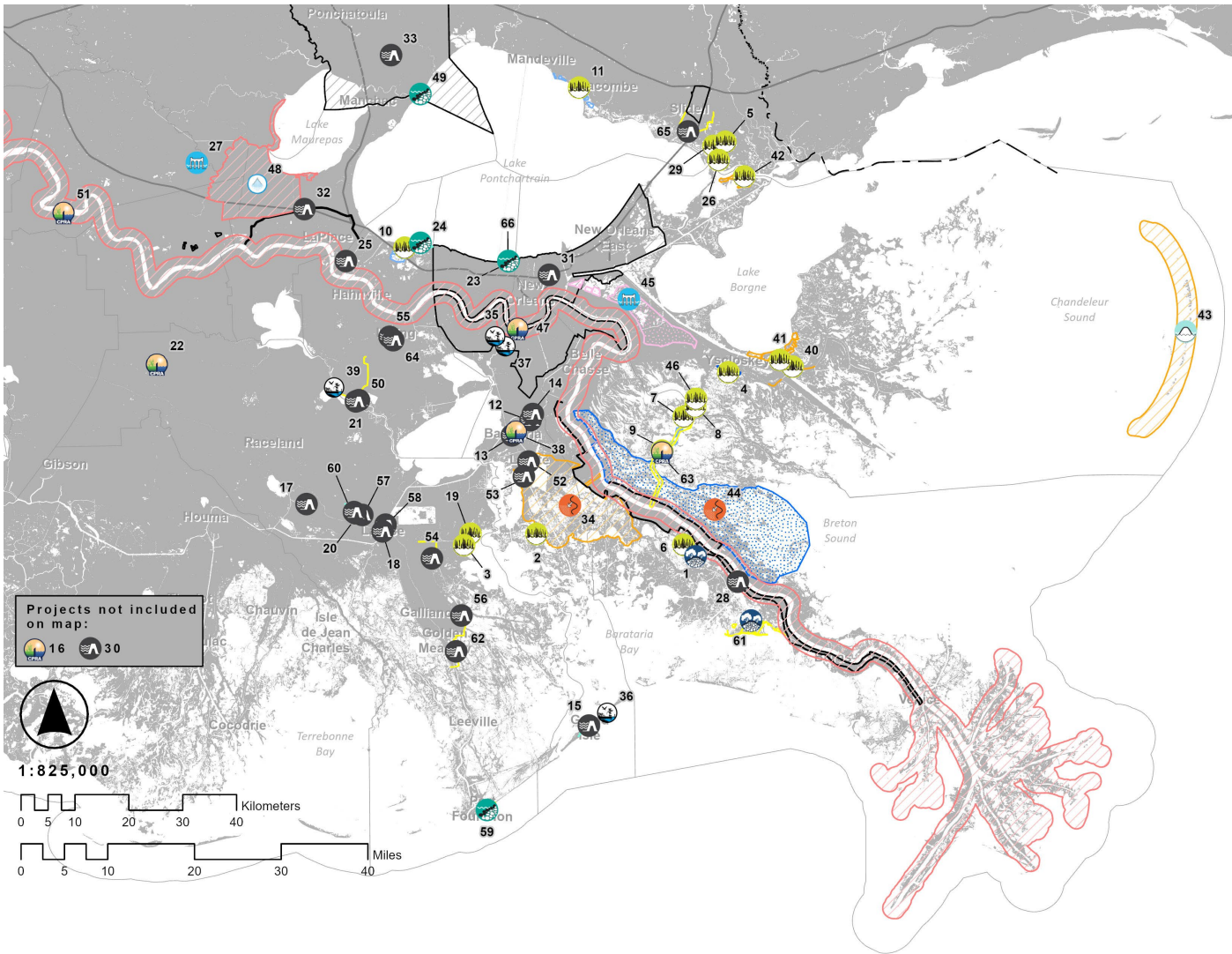
South Central Region

39 ACTIVE PROJECTS: 26 IN CONSTRUCTION, 10 IN E&D, 3 IN PLANNING

PROJECTS IN CONSTRUCTION:

- 2 Island Road Marsh Creation and Nourishment
- 3 West Fourchon Marsh Creation
- 4 **East Grand Lake Upper Region**
- 5 Boy Scouts of America Swamp Base Boat Launch
- 6 Bayou Pigeon Boat Launch
- 8 Point Coupee Drainage Improvements
- 11 **Morganza to the Gulf**
- 12 Larose to Golden Meadow System Improvements
- 13 Reach L Mitigation
- 15 MTG Levee Improvements- TLCD
- 16 West Belle Headland Repairs
- 17 Rodere Canal Water Control Structure
- 18 Little Valley Bayou Flood Protection Project
- 19 George Lancon Flood Protection Project
- 20 Rutton Rill Road Flood Protection Project
- 21 Stumpy Bayou Flood Protection Project
- 24 Terrebonne Basin Ridge and Marsh Creation- Bayou Terrebonne Increment
- 26 **Terrebonne HNC Island Restoration**
- 27 Bayou Dularge Ridge and Marsh Creation
- 28 Chitimacha Boat Launch
- 30 **Houma Navigation Canal Lock Complex**
- 32 MTG Reach E Levee Lift
- 34 Grand Bayou Pump Station
- 35 Jefferson Canal Flap Gate
- 38 Section A West Improvements
- 39 Bayou Teche Floodgate



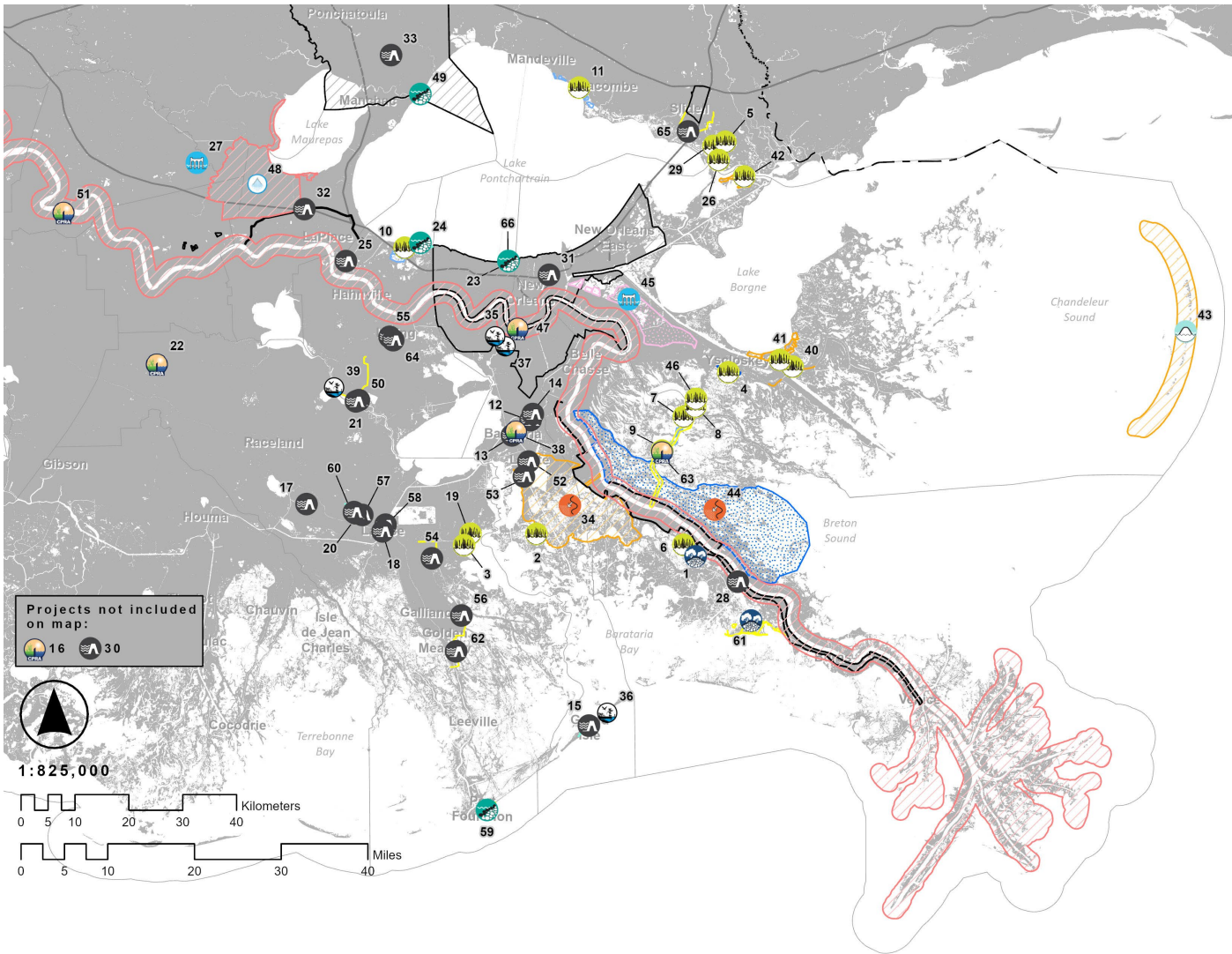


PROJECTS IN CONSTRUCTION:

- 6 Grand Bayou Ridge and Marsh Creation
- 7 Mid Breton Land Bridge Marsh Creation & Terracing
- 8 East Delacroix Marsh Creation and Terracing
- 9 Breton Landbridge Marsh Creation (West)
- 10 **LaBranche East Marsh Creation 1**
- 11 Bayou Cane Marsh Creation
- 12 **Rosethorne Tidal Protection**
- 13 Paillet Basin Tidal Protection
- 14 Crown Point Tidal Protection
- 15 Grand Isle Back Levee
- 16 Plaquemines Parish Drainage Improvements
- 17 Lockport to Larose Reach B1
- 18 Ted Gisclair Lock Structure
- 19 Northwest Little Lake Marsh Creation Increment 2
- 20 MTG Levee Improvements- NLLD
- 22 Sugar Ridge Pump Station
- 23 **Jefferson Parish Bucktown Living Shoreline Protection**
- 24 LaBranche Shoreline Protection
- 25 Montz Pump Station
- 28 New Orleans to Venice
- 29 New Orleans to Venice Mitigation - Plaquemines Non-Federal
- 31 SELA- Overall
- 32 **West Shore-Lake Pontchartrain, Louisiana Hurricane Protection**
- 34 Mid-Barataria Sediment Diversion

Southeast Region

66 ACTIVE PROJECTS: 47 IN CONSTRUCTION, 16 IN E&D, 3 IN PLANNING



PROJECTS IN CONSTRUCTION:

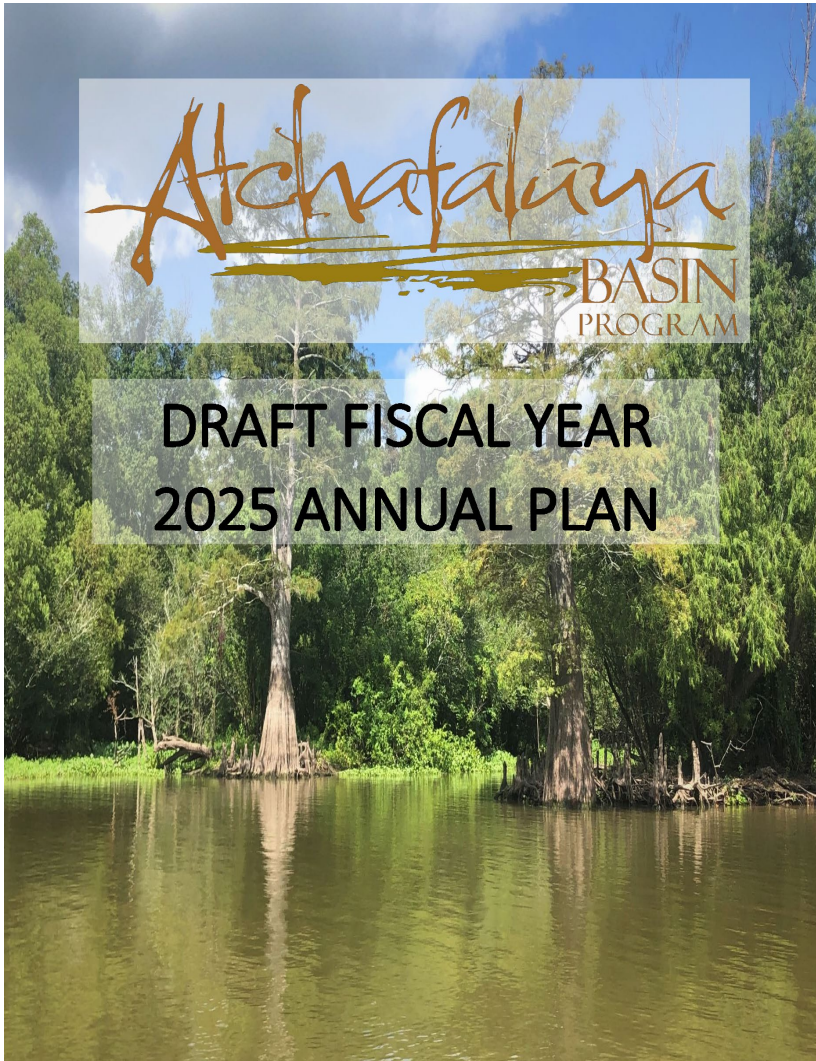
- 35 Bayou Segnette State Park Improvements
- 36 Grand Isle State Park Improvements
- 37 WHARF Phase 1
- 38 Louisiana Wetlands Education Center
- 39 Des Allemands Boat Launch
- 40 Bayou LaLoutre Ridge Restoration and Marsh Creation
- 41 **Lake Borgne Marsh Creation- Increment 1**
- 46 Lake Lery Marsh Creation (Phase 2)
- 48 River Reintroduction into Maurepas Swamp
- 49 Manchac Landbridge (Rock Breakwater) Shoreline Protection
- 50 Sunset Levee Upper Barataria Risk Reduction (UBRR)
- 51 Pumping Capacity Improvements Phase 1
- 52 Goose Bayou Tidal Protection
- 53 Lower Lafitte Tidal Protection
- 54 Storm Surge Risk Reduction for Reach E-North (SLLD)
- 55 T-Wall Kellogg Pump Station
- 56 Section D Storm Surge Risk Reduction
- 57 Ludevine Pump Station
- 58 Section F Berm Improvement
- 59 Port Fourchon Shoreline Protection
- 60 MTG Eastern Tie-in Levee Improvements
- 62 Section A East Increment Improvement
- 66 Jefferson Parish Lakefront Shoreline Protection

Southeast Region

66 ACTIVE PROJECTS: 47 IN CONSTRUCTION, 16 IN E&D, 3 IN PLANNING



Atchafalaya Basin Annual Plan - APPENDIX D



FY 25 PROJECTS:

Water Quality/Water Management

- Dredging in Big Bayou Pigeon
- Grimmett Canal Improvements
- Pointe Coupee Water Flow Improvements
- Murphy Lake Depth Restoration
- East Grand Lake Upper Region

Recreation/Access, Other

- Sandy Cove Boat Launch
- Cajun Coast Welcome Center Trail
- Bayou Pigeon Boat Launch Improvements
- Update to the Atchafalaya Basin Floodway System, Louisiana State Master Plan

View the Draft FY 2025 Annual Plan & Interactive Map

[AP25.COASTAL.LA.GOV](https://ap25.coastal.la.gov)

COMMENTS ACCEPTED UNTIL
FEBRUARY 18, 2024

