

# South Lafourche Levee District Agency Overview

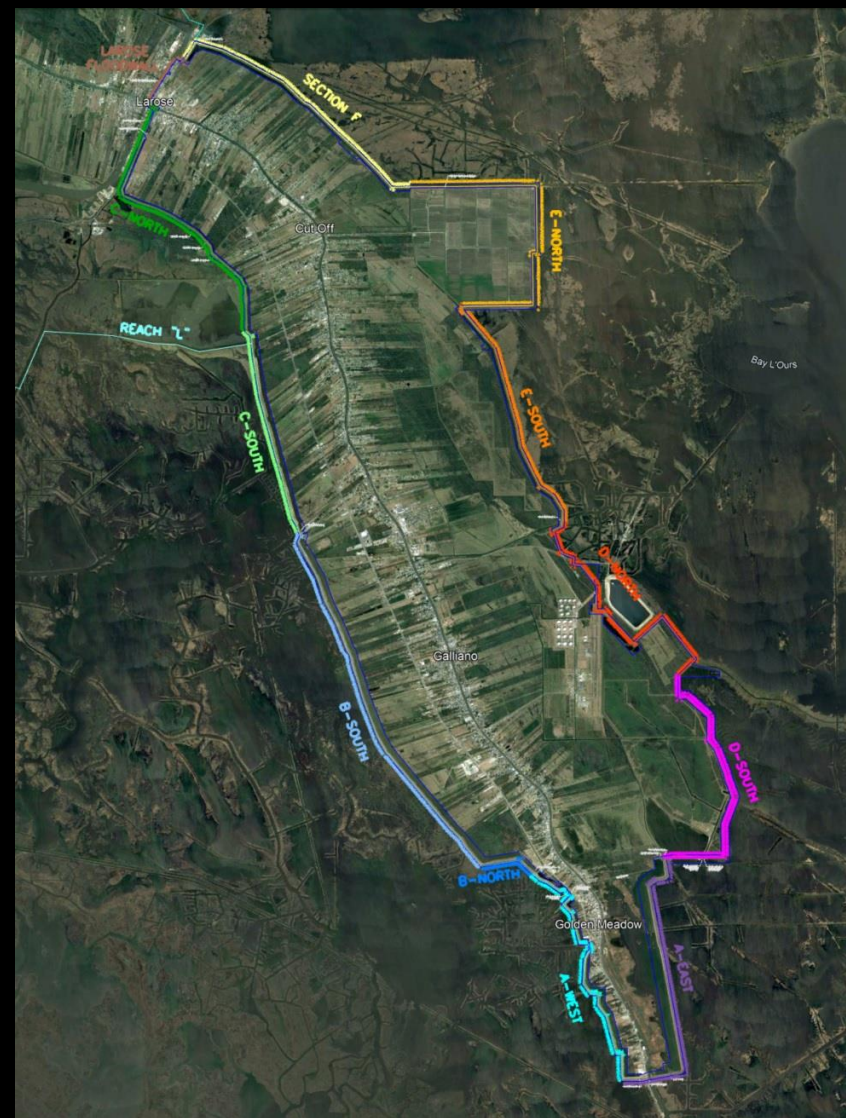
Nic Matherne, CFM – General Manager





# South Lafourche Levee System

- 48 miles of Levee & Structures
- 56' wide Floodgate in Larose
- 56' wide Lock in Golden Meadow
- 6 Pump Stations – 1.2M gallons/min
- 13' high Levees on North End
- 16-18' high Levees on South End

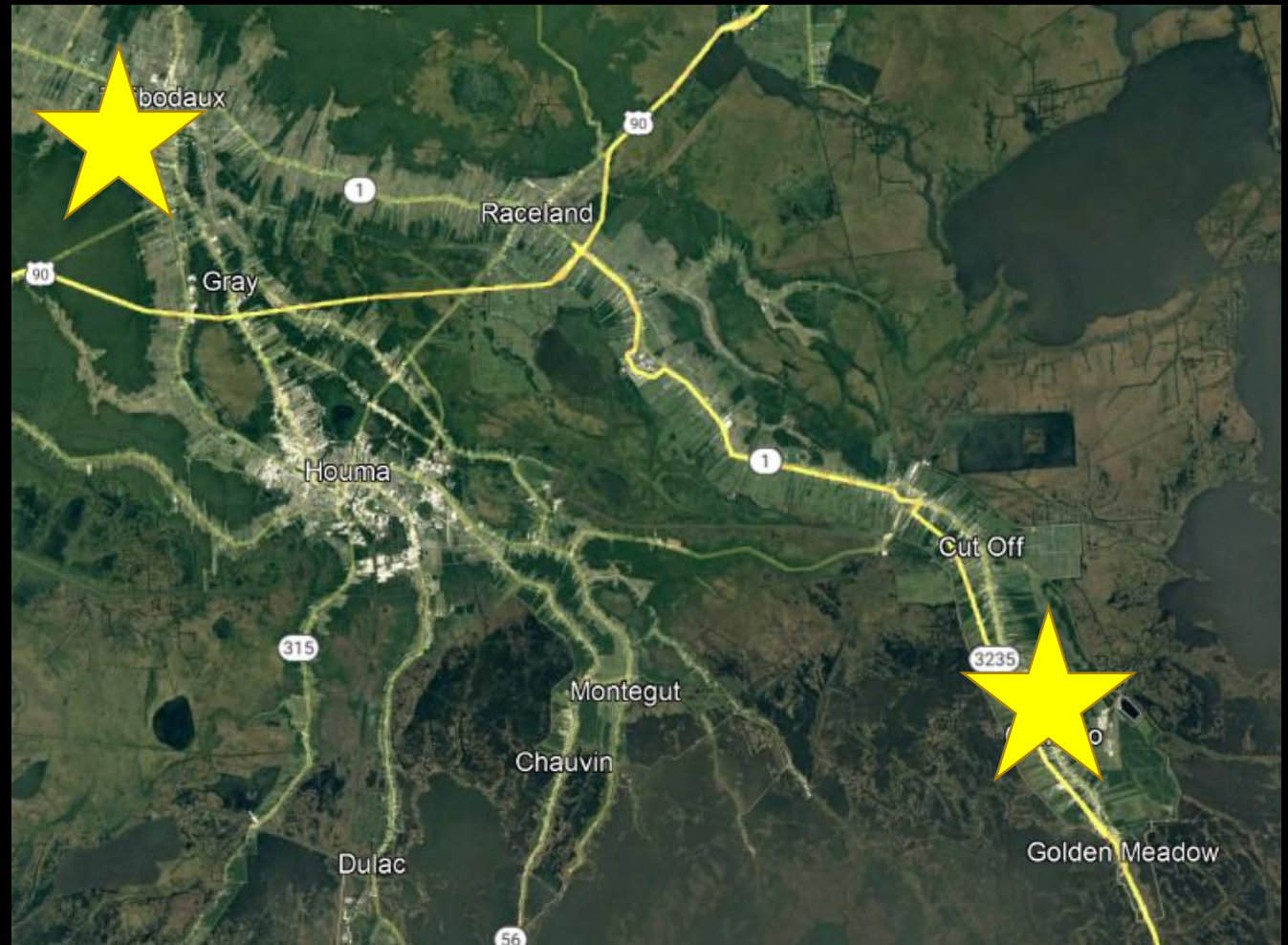




# How Much is That?

- 48 miles

South Lafourche High School  
to  
Thibodaux High School

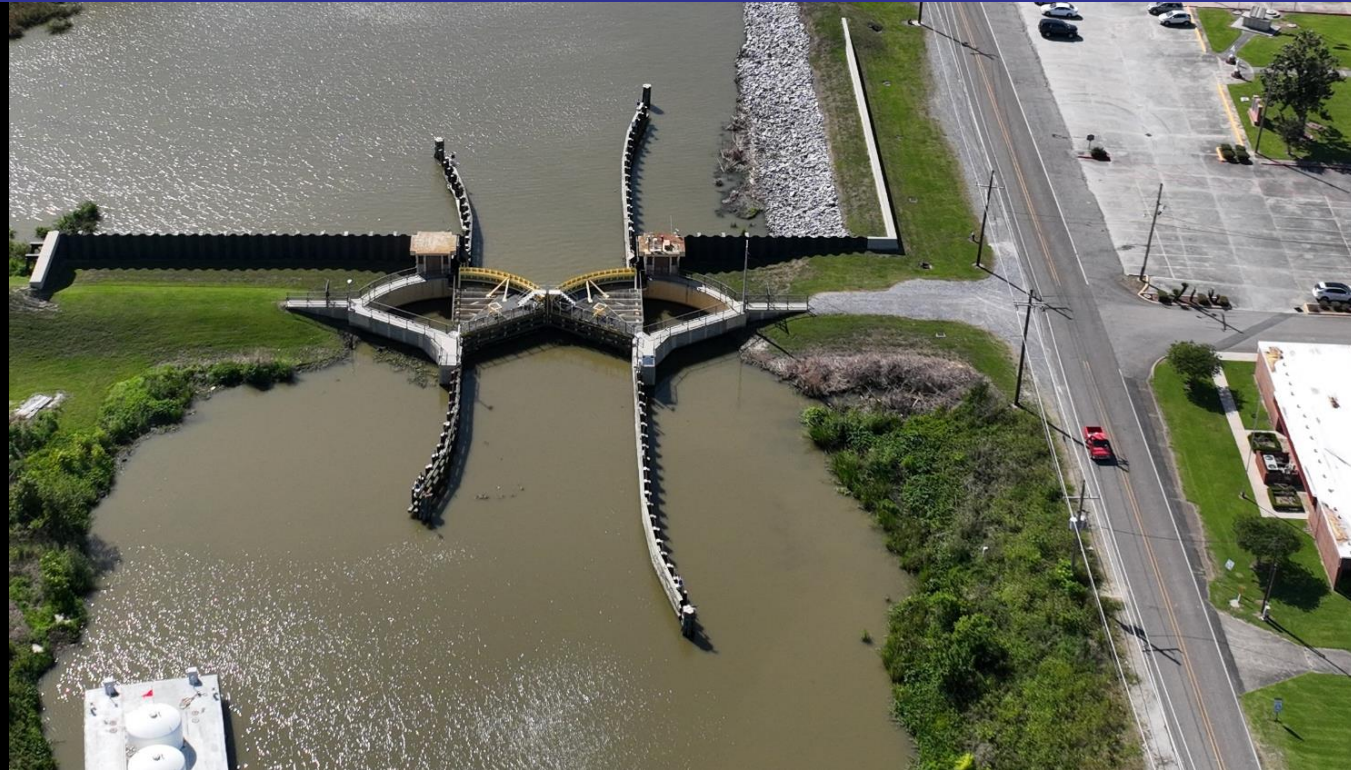




# How Much is That?

- 56' wide Lock and Floodgate

4 VW Beetles





# How Much is That?

- 1.2M gallons per minute

Olympic Sized Swimming Pool in 30 seconds

5" rainfall in 24 hrs





# How Much is That?

- 13' high on North End

2 Fridges

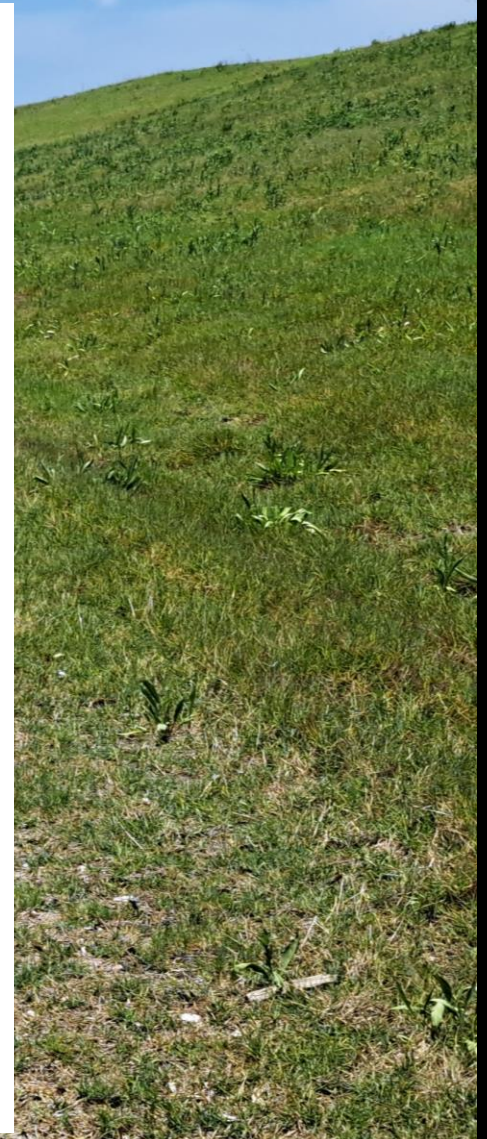




# How Much is That?

- 16'-18' high on South End

2 1/2 Shaqs





# Hurricane Ida - 2021

## Delta Farms Area in Larose





12/2020



Larose

308

Cut Off

308

3235

Galliano

Little Lake

Bay Dosgris

# December 2020

Image Landsat / Copernicus

Google Earth

29°32'33.91" N 90°13'41.43" W elev 2 ft eye alt 22.02 mi



Larose

308

Cut Off

308

3235

Galliano

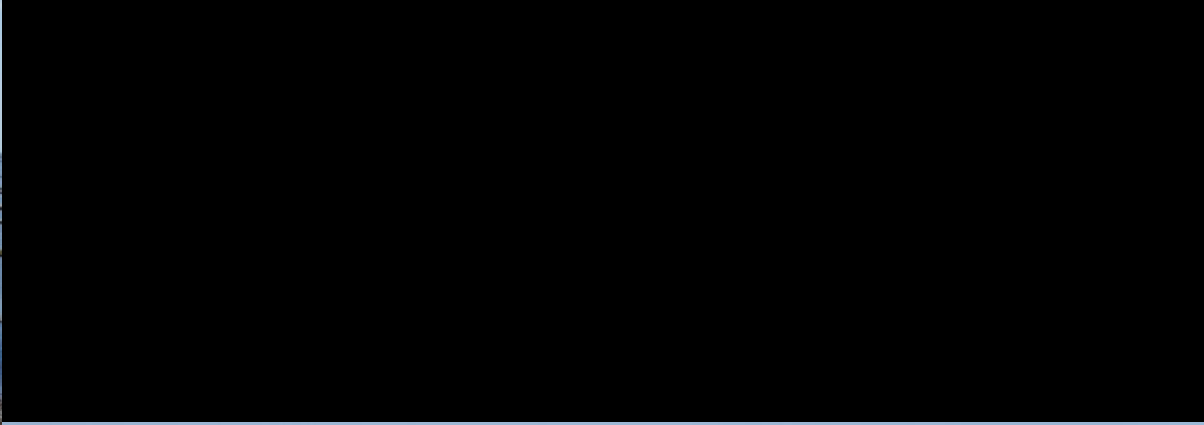
Little Lake

Bay Dosgris

# Post-Ida

Google Earth

29°39'05.27" N 90°20'50.46" W elev 2 ft eye alt 22.02 mi



# Recent Progress and Improvements



# Section C-North Levee Improvements



# Section C-South Levee Improvements



# Section D-North Levee Improvements



# Leon Theriot Lock Floodwall Tie-In



# D-North Ramp (BA-0246)

**\$500k – GOMESA**





# Section E-North Levee Improvements

SE Corner to NE Corner (BA-023 I)



NAIP 2021 3.75 MINUTE DOQQS: LAROSE, CUTOFF, & BAY L'OURS

LOCAL VICINITY MAP

3000 0 3000 6000 9000

SCALE: 1" = 3000'

PROJECT IS LOCATED IN SECTION 49, T-18-S, R-21-E



# Section E-North Levee Improvements

SE Corner to NE Corner (BA-023 I)

**\$3.5M – GOMESA**

**\$500k – SLLD**



# Section E-North Levee Improvements

SE Corner to NE Corner (BA-023 I)

**\$3.5M – GOMESA**  
**\$500k – SLLD**





**Where Do We Go from Here?**

**\$1 Million – GOMESA**  
**\$1.1 Million – SLLD**



**Larose Floodwall Vessel Impact Barrier**  
**(BA-0249)**

**\$1.7 Million – GOMESA**  
**\$2 Million – SLLD**



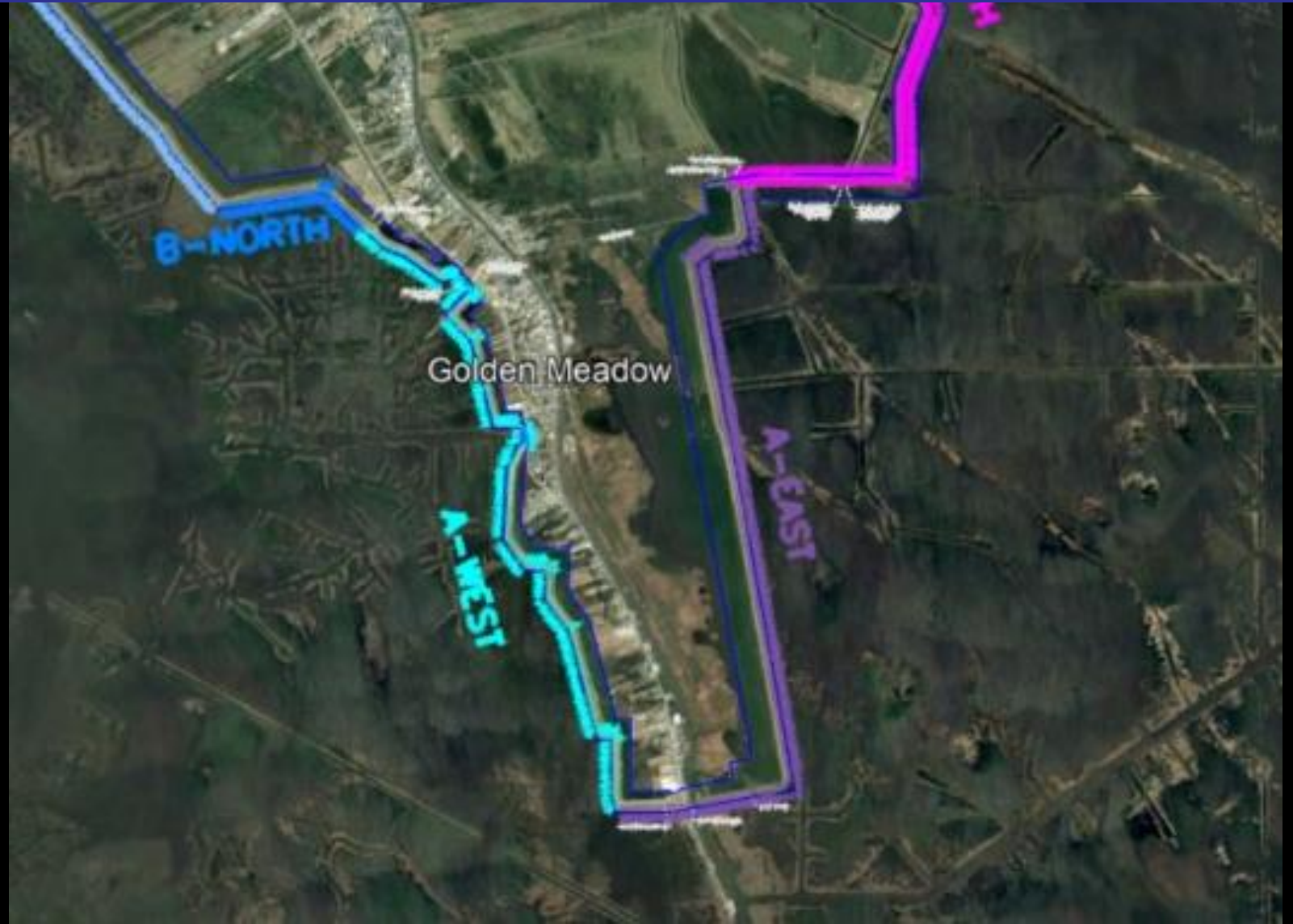
## **Section F Berm Improvements (BA-0250)**



# Section A-East Levee Improvements

**\$3.4M – GOMESA**

**\$4M – SLLD/  
Additional  
GOMESA**



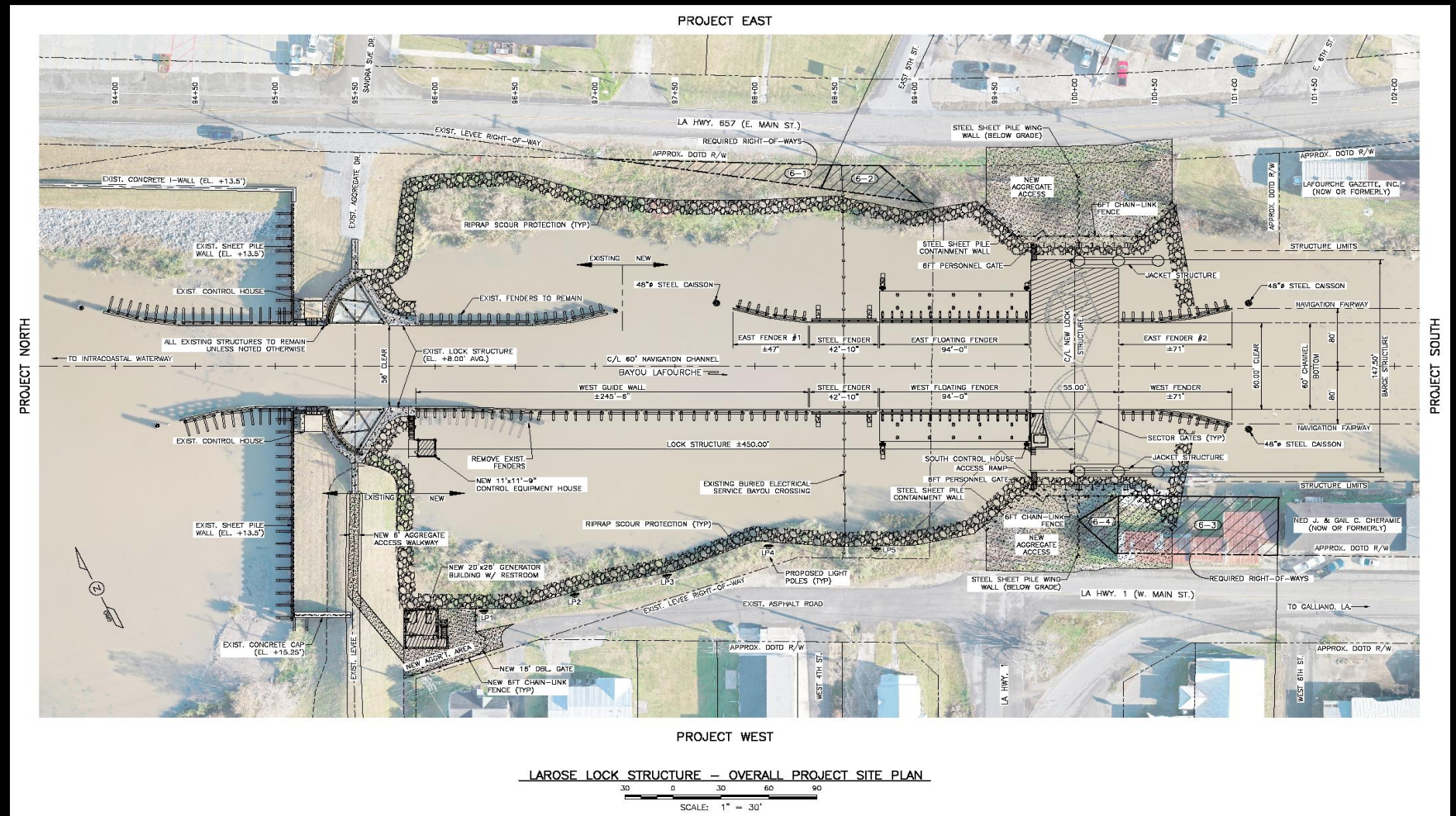


# Larose “Ted Gisclair” Lock (BA-0259)

**\$5M – GOMESA**

**\$5M – SLLD**

**\$15M – Lafourche Parish HMGP**







FOLLOW US ON  
**facebook**

# South Lafourche Levee District Agency Overview

Nic Matherne, CFM – General Manager

