

Implementation Update

GREG GRANDY, DEPUTY EXECUTIVE DIRECTOR



109 ACTIVE PROJECTS

45

61

3

<i>PROJECT TYPE</i>	CONSTRUCTION	E & D	PLANNING
HURRICANE PROTECTION (31)	19	10	2
MARSH CREATION (39)	12	27	
RIDGE RESTORATION (4)	1	3	
SHORELINE PROTECTION (9)	5	4	
BARRIER ISLANDS/HEADLANDS (4)		4	
DIVERSIONS (4)	1	3	
HYDROLOGIC RESTORATION (6)	2	4	
OYSTER BARRIER REEF (0)			
RECREATIONAL USE (5)	4	1	
OTHER (7)	1	5	1



ELLIOT JONES PUMP STATION

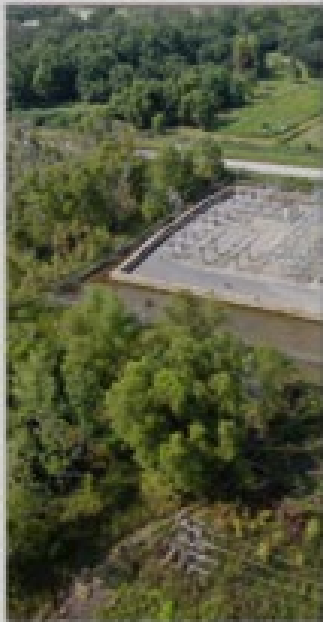
Terrebonne Parish



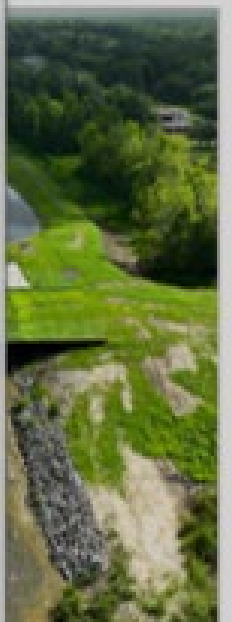
ELLIOT JONES PUMP STATION

Terrebonne Parish

VIDEO



AUGUS



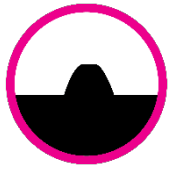
2023



ELLIOT JONES PUMP STATION

Terrebonne Parish



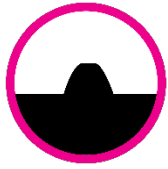


ELLIOT JONES PUMP STATION

Terrebonne Parish



Courtesy of Houma | Thibodaux Times



ELLIOT JONES PUMP STATION

Terrebonne Parish

30 JOBS

*NOT INCLUDING
GOVERNMENT WORKERS*





ROSETHORN TIDAL PROTECTION (PHASE 1)

Jefferson Parish

PREVIOUSLY COMPLETED:

- 2019 – Jean Lafitte Tidal Protection Project
- **Total Cost:**
\$30.6 Million

ROSETHORN PHASE 1:

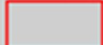
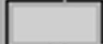

- Estimated Completion:
Dec. 2023
- **Total Cost:**
\$13.7 Million

ROSETHORN PHASE 2:

- Slated for
advertisement Sept.
2023



Legend

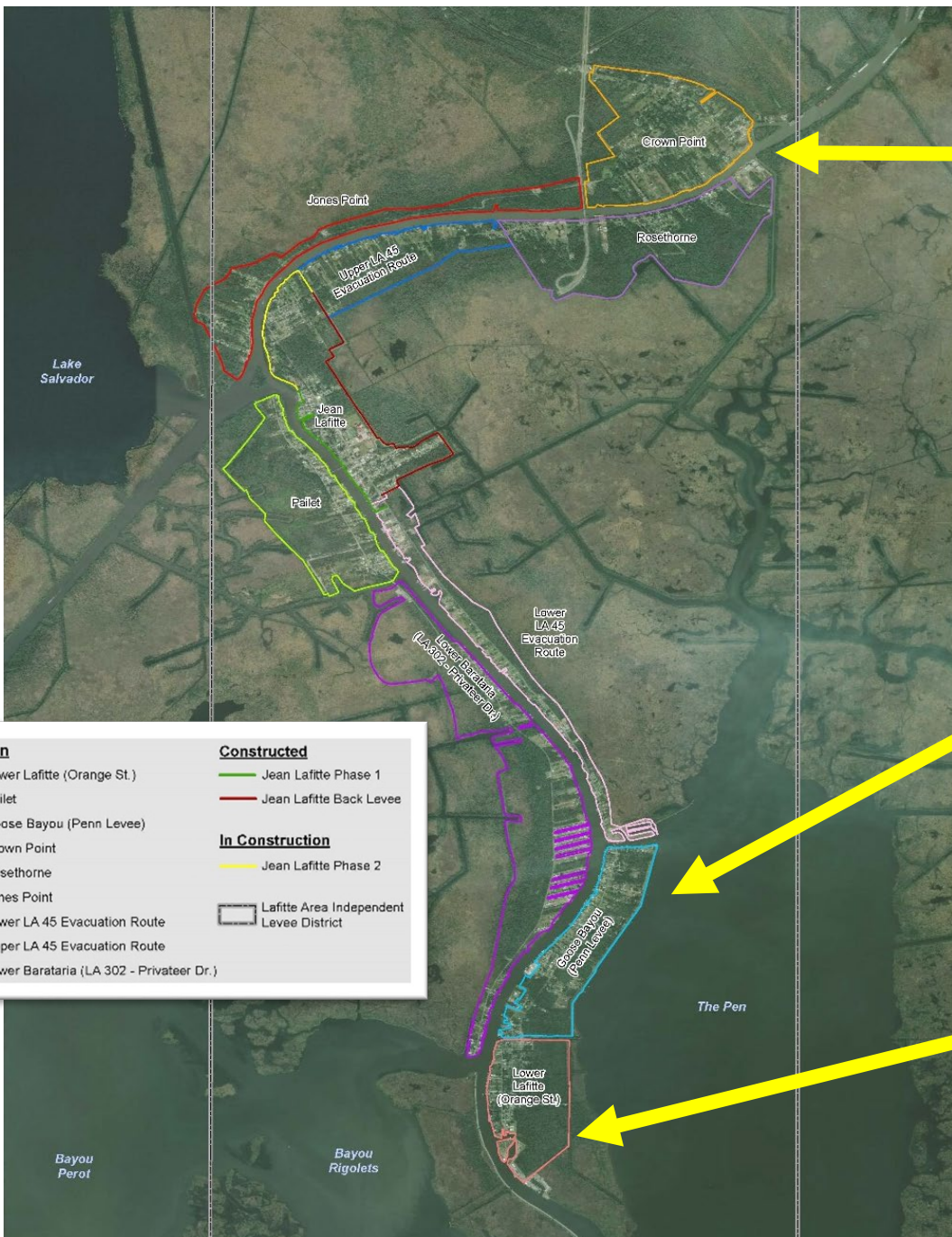
-  Rosethorne Drainage Basin
-  Lafitte Area Independent Levee District
-  Roads

VIDEO



ROSETHORN TIDAL PROTECTION (PHASE 1)

Jefferson Parish



PAILET AND CROWN POINT BASINS:

- Projects in design and expected to be advertised in 2024

GOOSE BAYOU TIDAL PROTECTION:

- Slated for advertisement by end of 2023

LOWER LAFITTE TIDAL PROTECTION:

- Construction started this month
- **Total Cost: \$13 Million**



ROSETHORN TIDAL PROTECTION (PHASE 1)

Jefferson Parish

110 JOBS
*NOT INCLUDING
GOVERNMENT WORKERS*



MID-BARATARIA SEDIMENT DIVERSION - *Groundbreaking Ceremony*



FY 24 CONSERVATION & RESTORATION PARTNERSHIP FUND

Now Accepting Proposals!

RFP

July 2023

PROPOSALS DUE

Oct. 2023

EVALUATION

Nov. 2023

NOTIFICATIONS

Dec. 2023

IMPLEMENTATION



PROPOSALS WILL BE EVALUATED WITH THESE CONSIDERATIONS:

- Consistent with the goals and objectives of 2017 Master Plan
- Acreage conserved or restored
- Synergy with other conservation and restoration efforts
- Project constructability
- Matching Funds

CONTACT PARTNERSHIPFUND@LA.GOV WITH QUESTIONS!

ASSISTANT SECRETARY SHANNON ESTENOZ' VISIT

Department of the Interior



LOWA COMPETITION

Louisiana Outdoor Writers Association



VIDEO

**CONGRATULATIONS
*NICK GREMILLION!***



PRA

CONNECT WITH US!



@LOUISIANACPRA

