

# COASTAL PROTECTION AND RESTORATION AUTHORITY BOARD MEETING

COL Cullen Jones, P.E., PMP  
District Engineer and Commander  
US Army Corps of Engineers  
New Orleans District

August 16, 2023



U.S. ARMY



US Army Corps  
of Engineers®



# MORGANZA TO THE GULF OF MEXICO, LOUISIANA UPDATE



## Stakeholders:



US Army Corps of Engineers®



# Morganza to the Gulf of Mexico, Louisiana



LEGEND	
	Levee Lift Constructed by Non-Federal Sponsor (NFS) not yet built to authorized height
	Levees Proposed / Planned / In Design
	Initially Constructed by NFS
	Under Construction by NFS
	Proposed / Planned / In Design
	2nd Levee Lift
	Parish Levees
	Environmental Control Structure
	Navigable Structure
	Roadway Gate
	Floodwall
	Pump Station (Fronting Protection)
	Lock

PT / 19 April 2022



U.S. ARMY



US Army Corps  
of Engineers®



# MORGANZA TO THE GULF LEVEE SYSTEM<sup>4</sup>

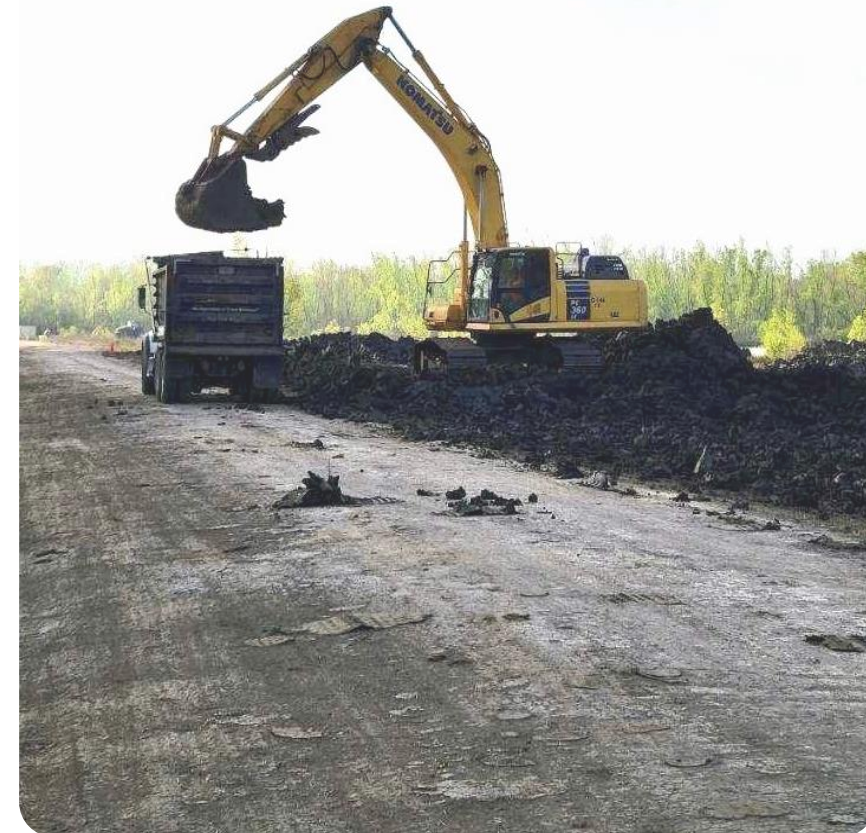
## FEDERAL WORK UNDERWAY

**Cost to Complete Initial Construction: \$5.0B**  
**Federal Share: \$3.2B**  
**Federal Funding Received: \$440M**  
**Non-Federal Match (In-Kind Work) \$237M**

**Project Mission:** Working with CPRA and Levee Districts to deliver a world class levee system design to reduce flood risk for the citizens of Terrebonne and Lafourche Parishes

### Federal Construction Started

- Humble Canal Sector Gate Preload \$11M
- Complete by September 2023





U.S. ARMY



US Army Corps of Engineers®



# MORGANZA TO THE GULF LEVEE SYSTEM<sup>5</sup>

## FEDERAL WORK UNDERWAY

### Funded Design and Construction

#### Features Funded for Design and Construction

##### Levee Features

- Reach A Levee portion-\$27M
- Lockport to Larose Levee portion-\$30M

##### Structure Features

- Minors Canal Floodgate-\$30M
- GIWW West Floodgate-\$125M
- GIWW East Floodgate-\$114M
- Humble Canal Floodgate-\$52M

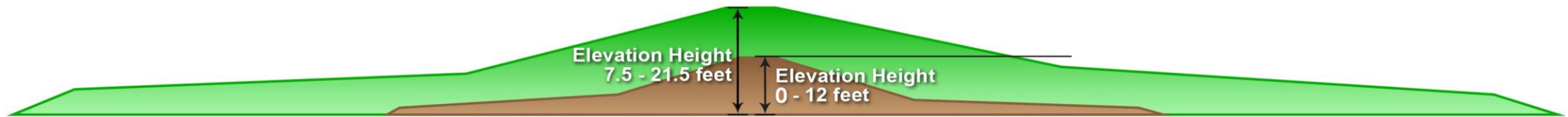
#### Features Funded for Design — \$51M



##### Levee Features    Structure Features

- |             |                              |
|-------------|------------------------------|
| • Reach F   | • Bayou Terrebonne Floodgate |
| • Reach J-2 | • Shell Canal Floodgate      |
| • Reach L   |                              |
| • Reach K   |                              |

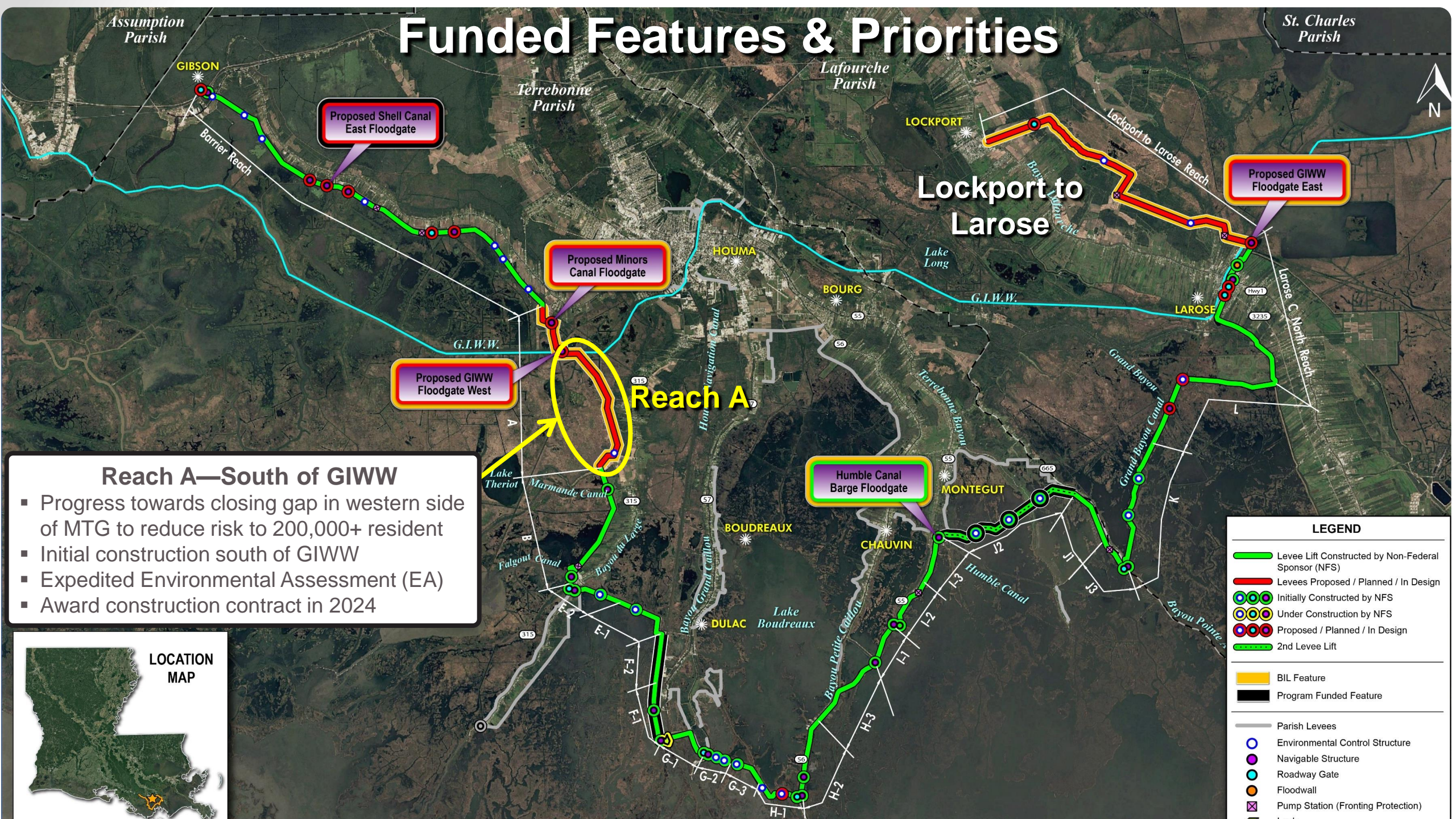
##### Environmental Efforts

- Reach A Environmental Assessment (EA) & Mitigation
- Reach F EA
- Supplemental Environmental Impact Statement (SEIS)—Entire project
- Survey and Borings EA



-  Federal Levee (Construction Underway) to provide 100-year LORR
-  Existing Levee (Constructed by State, NLLD, TLCD)

# Funded Features & Priorities



Proposed Shell Canal East Floodgate

Proposed Minors Canal Floodgate

Proposed GIWW Floodgate West

Proposed GIWW Floodgate East

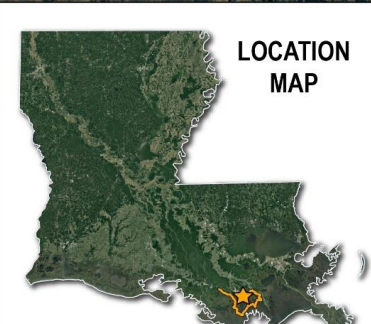
Humble Canal Barge Floodgate

Reach A

Lockport to Larose

## Reach A—South of GIWW

- Progress towards closing gap in western side of MTG to reduce risk to 200,000+ resident
- Initial construction south of GIWW
- Expedited Environmental Assessment (EA)
- Award construction contract in 2024



LEGEND	
	Levee Lift Constructed by Non-Federal Sponsor (NFS)
	Levees Proposed / Planned / In Design
	Initially Constructed by NFS
	Under Construction by NFS
	Proposed / Planned / In Design
	2nd Levee Lift
	BIL Feature
	Program Funded Feature
	Parish Levees
	Environmental Control Structure
	Navigable Structure
	Roadway Gate
	Floodwall
	Pump Station (Fronting Protection)

# WEST SHORE LAKE PONTCHARTRAIN CONSTRUCTION UPDATE



U.S. ARMY



US Army Corps  
of Engineers®

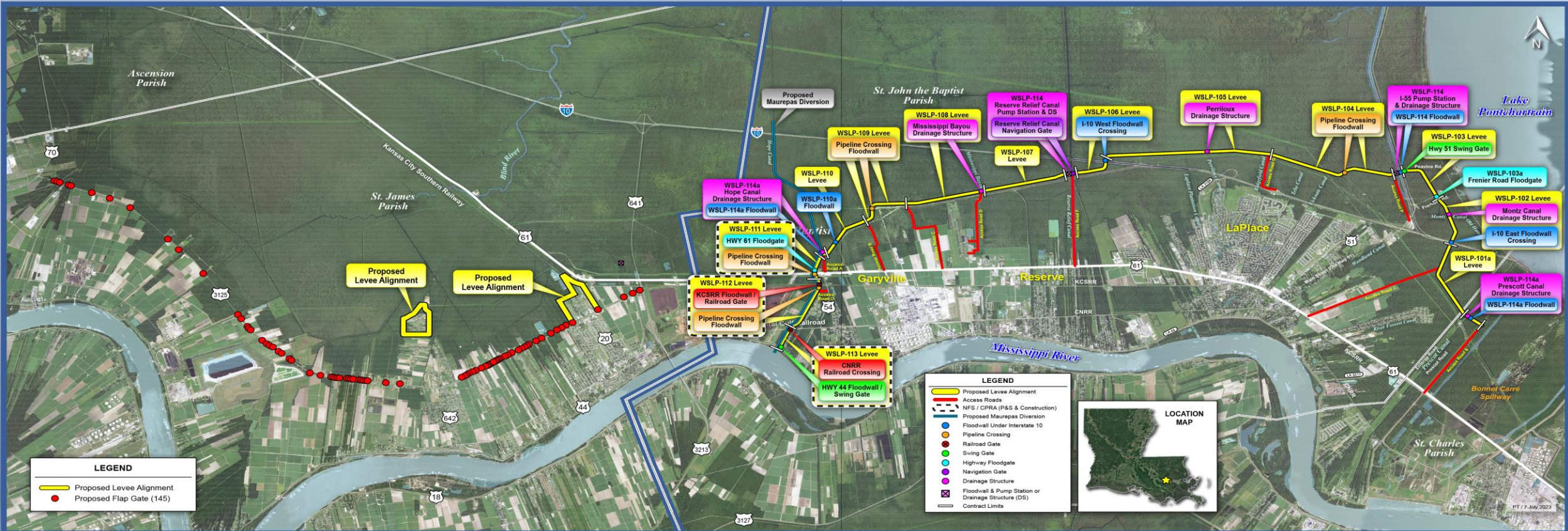




# West Shore Lake Pontchartrain

## St. James Parish Alignment

## St. John Parish Alignment







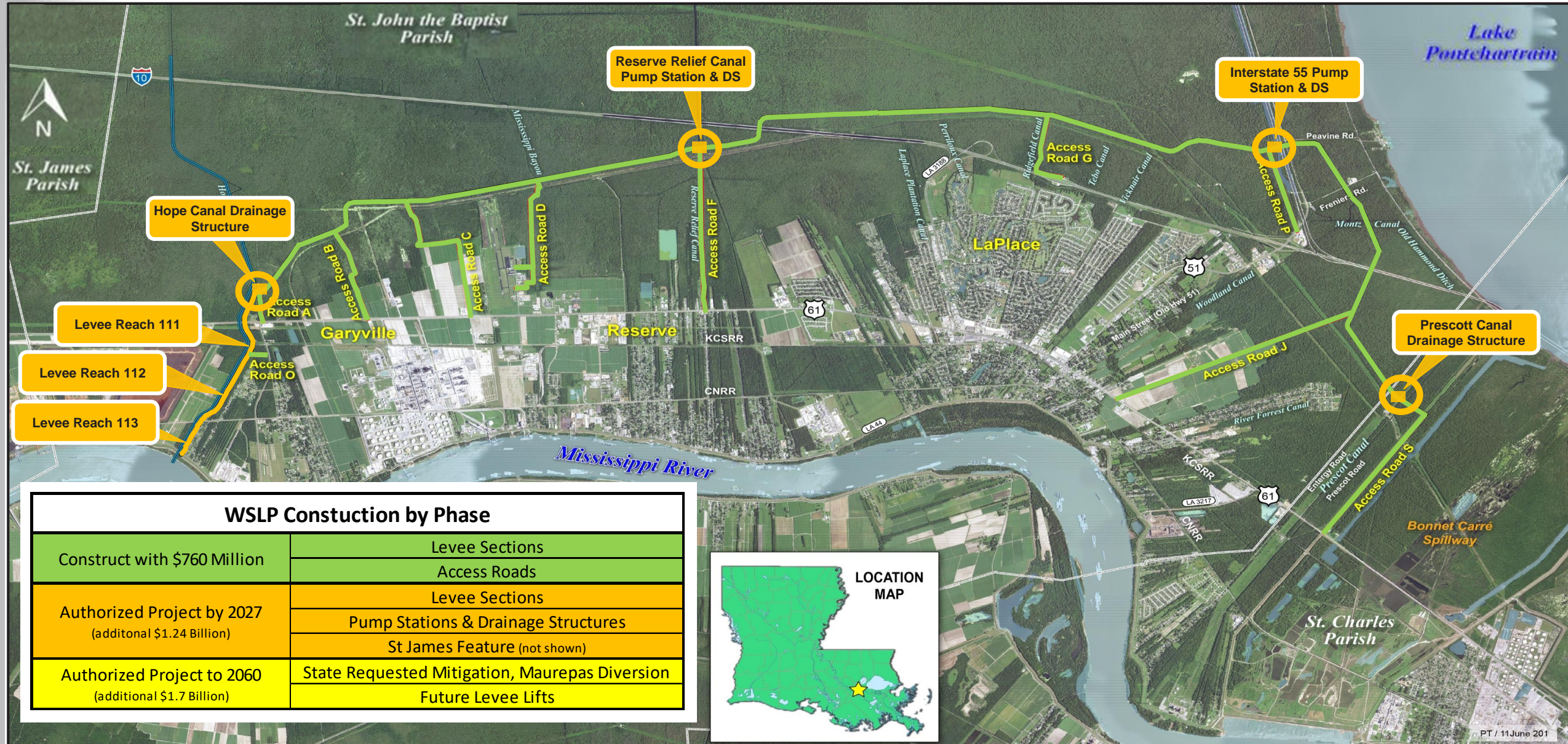
U.S. ARMY



US Army Corps of Engineers®



# WSLP – CONSTRUCTION PROGRESSION



### WSLP Constuction by Phase

Construct with \$760 Million	Levee Sections Access Roads
Authorized Project by 2027 (additional \$1.24 Billion)	Levee Sections Pump Stations & Drainage Structures St James Feature (not shown)
Authorized Project to 2060 (additional \$1.7 Billion)	State Requested Mitigation, Maurepas Diversion Future Levee Lifts





U.S. ARMY



US Army Corps of Engineers®



# WSLP – COST GROWTH

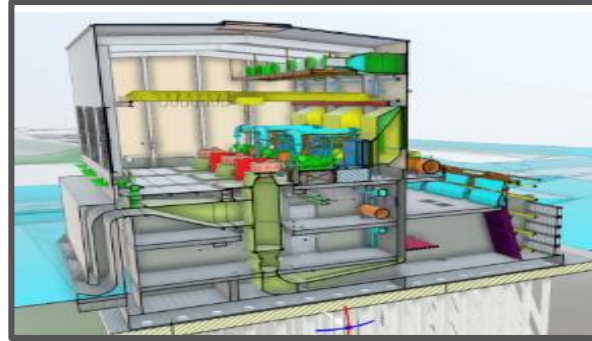
## Primary Cost Drivers

### Total Project Cost increase from \$760M to \$3.7B

To deliver authorized project by 2027 - \$2B total investment



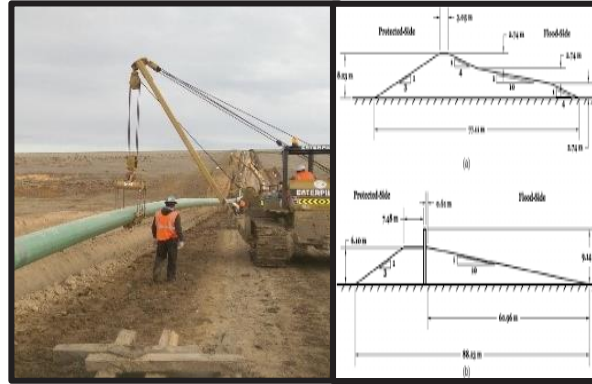
Levees and Floodwalls (\$390M Increase)



Pump Stations (\$350M Increase)



Mitigation (\$255M Increase)



Relocations/PED/S&A (\$245M Increase)

To deliver to 2060 - \$3.7B total investment



Future Lifts (\$1.3B Increase)



State Preferred Mitigation (\$450M Increase)



U.S. ARMY



US Army Corps  
of Engineers®



# MITIGATING FUTURE COST INCREASES

11

## What MVD/MVN has completed:

- Cost Engineering Initiatives
- WSLP Independent Review of CWE- NAD
- Moved Studies across MVD (Regionalization)
- Balancing WL/WF across MVD
- Greater use of PCX

## What MVD/MVN will accomplish:

- Greater transparency
  - Feasibility Report uncertainty
  - Future Supplemental requests
- Routinely updating Cost Estimates
- Ensuring transparency and accomplishing appropriate design maturity
- Senior Leader led cost estimate review
- Feasibility cost breakdown by contract
- Future cost risk audits (Comite – SWD, WSLP – NAD)



THE SPANISH LANGUAGE PROJECT 2015



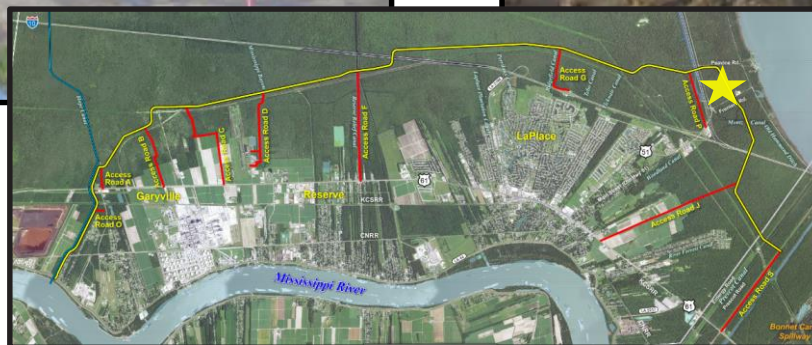
U.S. ARMY



US Army Corps of Engineers®



# WSLP CONSTRUCTION





U.S. ARMY



US Army Corps of Engineers®



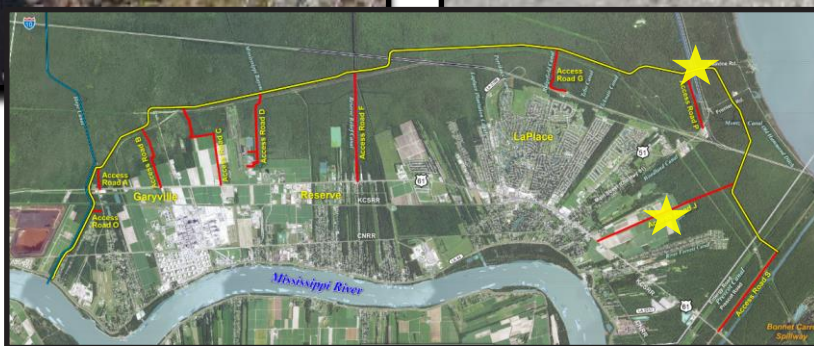
# WSLP CONSTRUCTION



Previously cleared levee alignment



Clay Stockpile 1 on access Road J





U.S. ARMY



US Army Corps of Engineers®



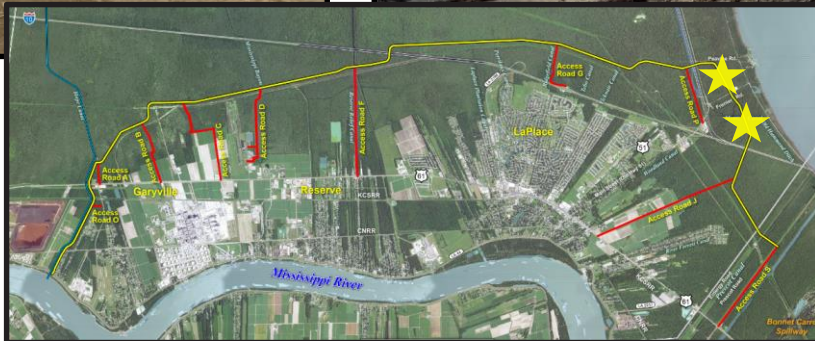
# WSLP CONSTRUCTION



Sand base at 102



Sand base at 103





U.S. ARMY



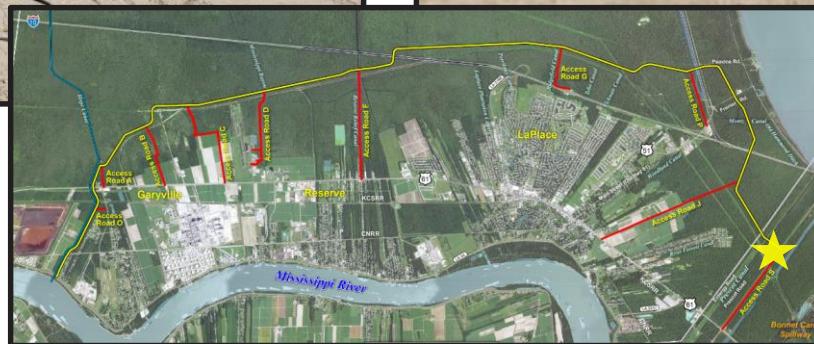
US Army Corps of Engineers®



# WSLP CONSTRUCTION



Pile Load Test Site #1 - Prescott Drainage Structure







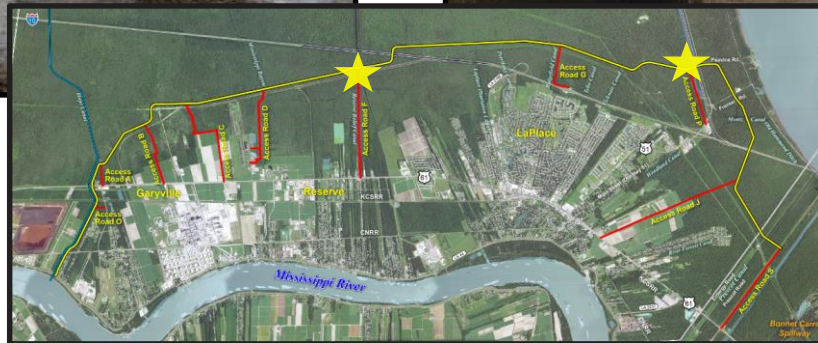
U.S. ARMY



US Army Corps  
of Engineers®



# WSLP CONSTRUCTION





U.S. ARMY



US Army Corps of Engineers®



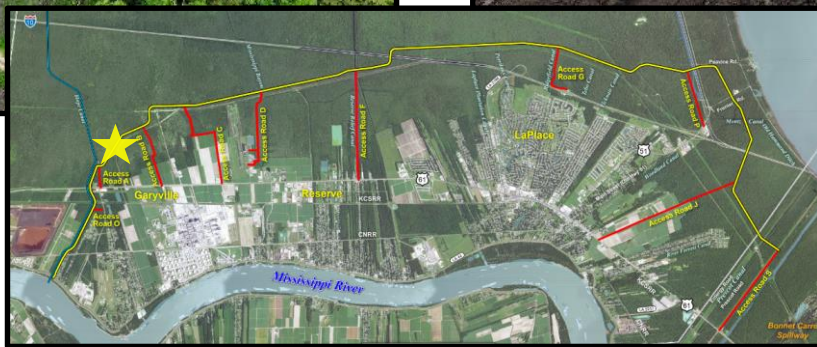
# WSLP CONSTRUCTION



WSLP-110 Construction Progress



WSLP-110 Levee Clay Placement





U.S. ARMY



US Army Corps of Engineers®



# WSLP CONSTRUCTION



Culvert placement for interior drainage canal at 107



ROW clearing and tree removal/burning at 107

