



Nicholls State University

# COASTAL CENTER UPDATE

July 12, 2023



Nicholls State University

# Coastal Center Location



Nicholls State University

# Origins, 2019

- “This is the beginning of a partnership where we can focus our attention on the Atchafalaya River and the potential for it to be a restoration tool for the Terrebonne Basin”--Governor Edwards, August 22, 2019.



Nicholls State University

# Goal of Coastal Center

To analyze the status, processes, and resources of the region to provide science-based recommendations for conservation and restoration projects, focusing on the Atchafalaya, Terrebonne and Barataria basins.



Nicholls State University

# Vision and Mission

**Vision:** A living, working and resilient coast.

**Mission:** To support and pursue protection, restoration and adaptation efforts through science-based research and solution within Louisiana's dynamic coastal region.



Nicholls State University

# Research Needs in Atchafalaya Basin



- Water Quality
- Sedimentation
- Fisheries
- Flood Control
- Navigation
- Old River Control





Nicholls State University

# Research Needs in Terrebonne and Barataria Basins

- Dredged Sediments
- Barrier Islands
- Oyster Reef/Living Shorelines
- Wetland Ecology/Vegetation Response
- Structural Protection





Nicholls State University

# Research Needs of Levee Districts and Ports

- Levee construction stability and materials assessment
- Assessing biological interchange capacity in leaky levees
- Improving land and vegetation re-establishment behind levee projects
- Assessing variable subsidence rates in the region
- Optimizing pump-off elevations in forced drainage areas
- Determining innovative financing techniques







BROAD VISION. EXPERT FOCUS.

# Programming and Design, 2020-2022



PROJECT  
MANAGEMENT



CIVIL  
ENGINEERING



COASTAL + H&H  
ENGINEERING



ARCHITECTURE



SURVEYING



LANDSCAPE  
ARCHITECTURE



WETLANDS  
ENVIRONMENTAL



Nicholls State University

THIBODAUX

BATON ROUGE

LAFAYETTE

NEW ORLEANS

COVINGTON

HOUSTON

MOBILE

## Max Charter Campus



- Interesting connection to public park; can utilize public entities for education outreach and joint programs with municipality
- Room for future expansion on side lots and potential redevelopment of Babington Hall
- Added Parking can be utilized as a shared resource with campus
- Master plan designates this area as future educational buildings
- Access from Audubon Drive; more in the heart of campus rather than on the public "edge"
- Would require a land swap - need more information

## Football Practice Field



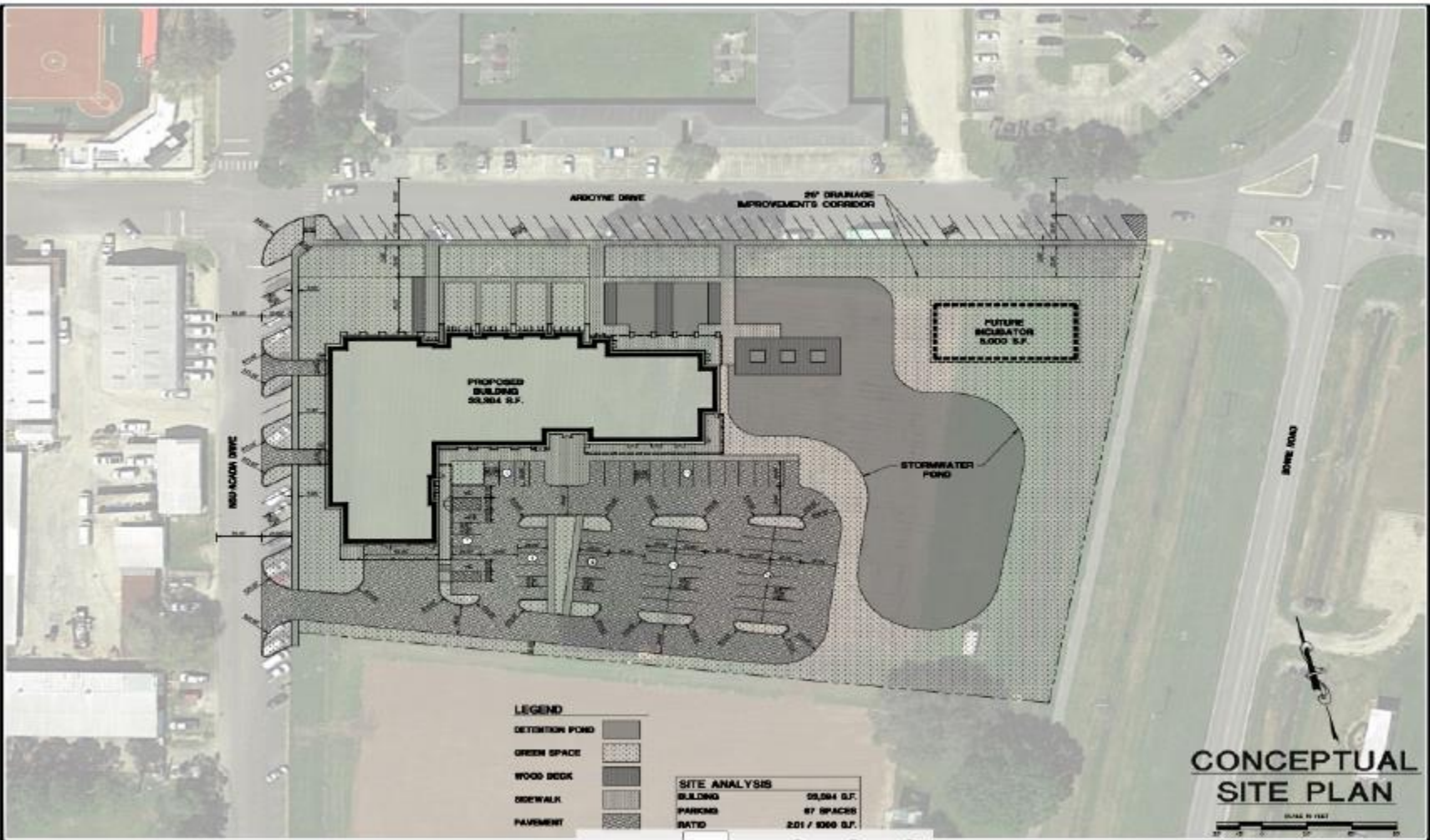
- Access to Bowie Road and campus - on the edge of campus; allows good traffic flow while still providing safe pedestrian access
- Land locked, but expansion could continue across Bowie Road
- Downstream of campus drainage
- Beautification of Ardoyne Drive and Bowie Road intersection
- University could utilize shared parking for sporting events and classes

## Bowie Road at Ardoyne



- Lies on the outermost perimeter of campus; good access for university and public
- Adjacent to Bowie Road for good vehicular access; but must crossroad for pedestrian access
- Isolated from the "educational" sections of campus
- Current Master plan has this area designated for public related use
- Downstream of campus' drainage system
- Large site could accommodate detention ponds/ water features etc.
- Room for expansion





REVISION	BY

1044 Riverside  
 The Woodlands  
 One Woodloch Forest  
 The Woodlands, TX 77380  
 www.ddg.com



NEW CAPITAL CENTER  
 AT MCNOLLS STATE UNIVERSITY  
 FOR LAFOURCHE PARISH GOVERNMENT  
 THIBODOUX, LA

DATE	
SCALE	
PROJECT NO.	
PARCEL NO.	
SHEET NO.	
TOTAL SHEETS	
DATE	
DRAWN BY	
CHECKED BY	
DATE	
PROJECT NO.	
PARCEL NO.	
SHEET NO.	
TOTAL SHEETS	

**LEGEND**

DETENTION POND	
GREEN SPACE	
WOOD DECK	
SIDEWALK	
PAVEMENT	

**SITE ANALYSIS**

BUILDING	59,984 S.F.
PARKING	87 SPACES
RATIO	201 / 9360 S.F.

**CONCEPTUAL  
 SITE PLAN**

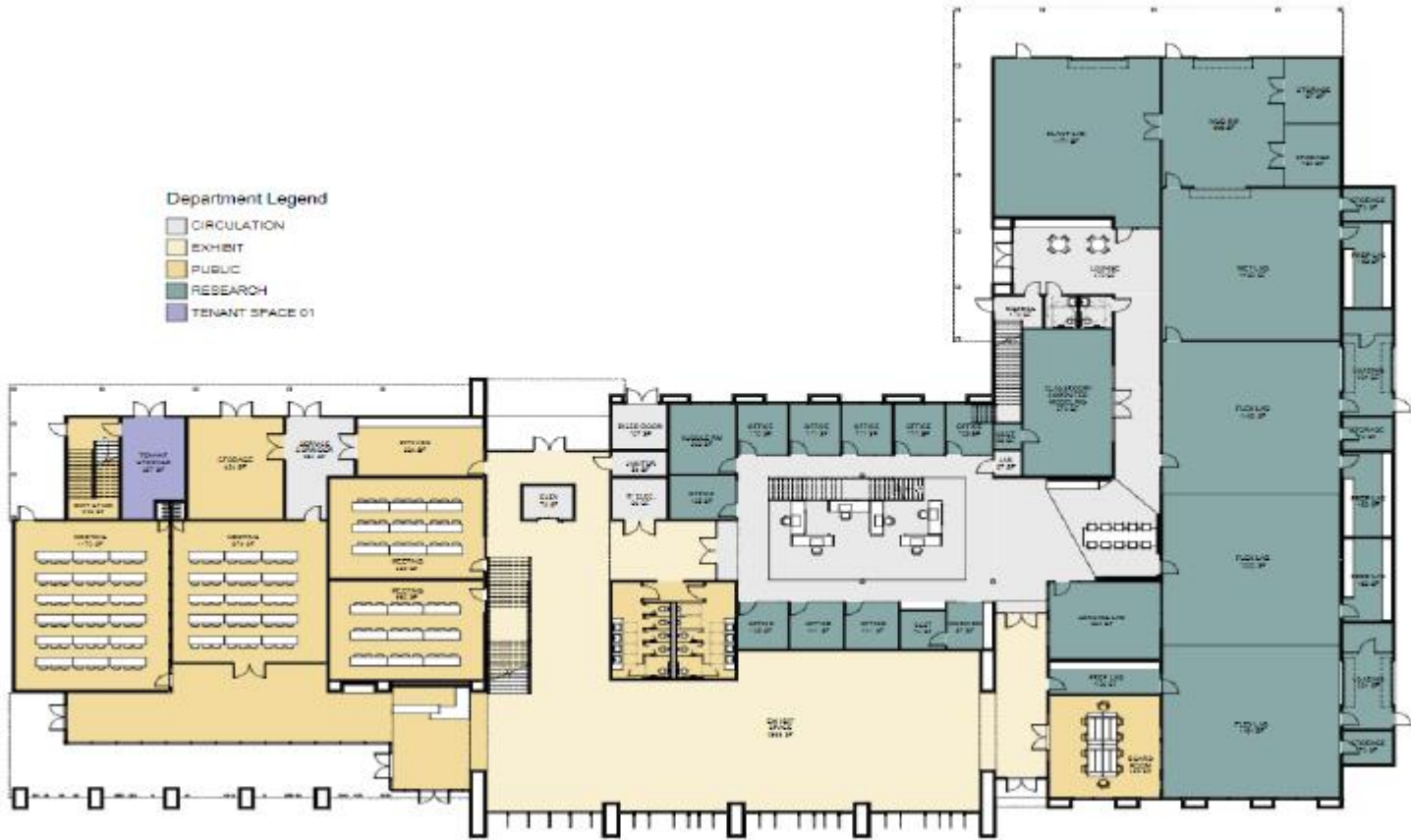
SCALE: 1/4" = 1'-0"  
 0' 10' 20' 30' 40' 50'





Department Legend

- CIRCULATION
- EXHIBIT
- PUBLIC
- RESEARCH
- TENANT SPACE 01



PRELIMINARY  
 NOT FOR CONSTRUCTION

**NEW COASTAL CENTER**  
 AT NICHOLLS STATE UNIVERSITY  
 FOR LAFOURCHE PARISH GOVERNMENT  
 THIBODOX, LA.

00/00	01
01/00	02
02/00	03
03/00	04
04/00	05
05/00	06
06/00	07
07/00	08
08/00	09
09/00	10
10/00	11
11/00	12

CURRY ARCHITECTS, ARCHITECTS  
 225 SOUTH WILSON BLVD.  
 SUITE 200  
 THIBODOX, LA 70310

A1.3

REV	DATE	BY	DESCRIPTION

DDG

DESIGN DEVELOPMENT GROUP, INC.  
 1011 W. UNIVERSITY BLVD., SUITE 200  
 THIBODOX, LA 70310  
 PHONE: (504) 885-1111  
 WWW.DDGPC.COM

FEDERAL GOVERNMENT | UNIVERSITY | HEALTHCARE | COMMERCIAL | RESIDENTIAL







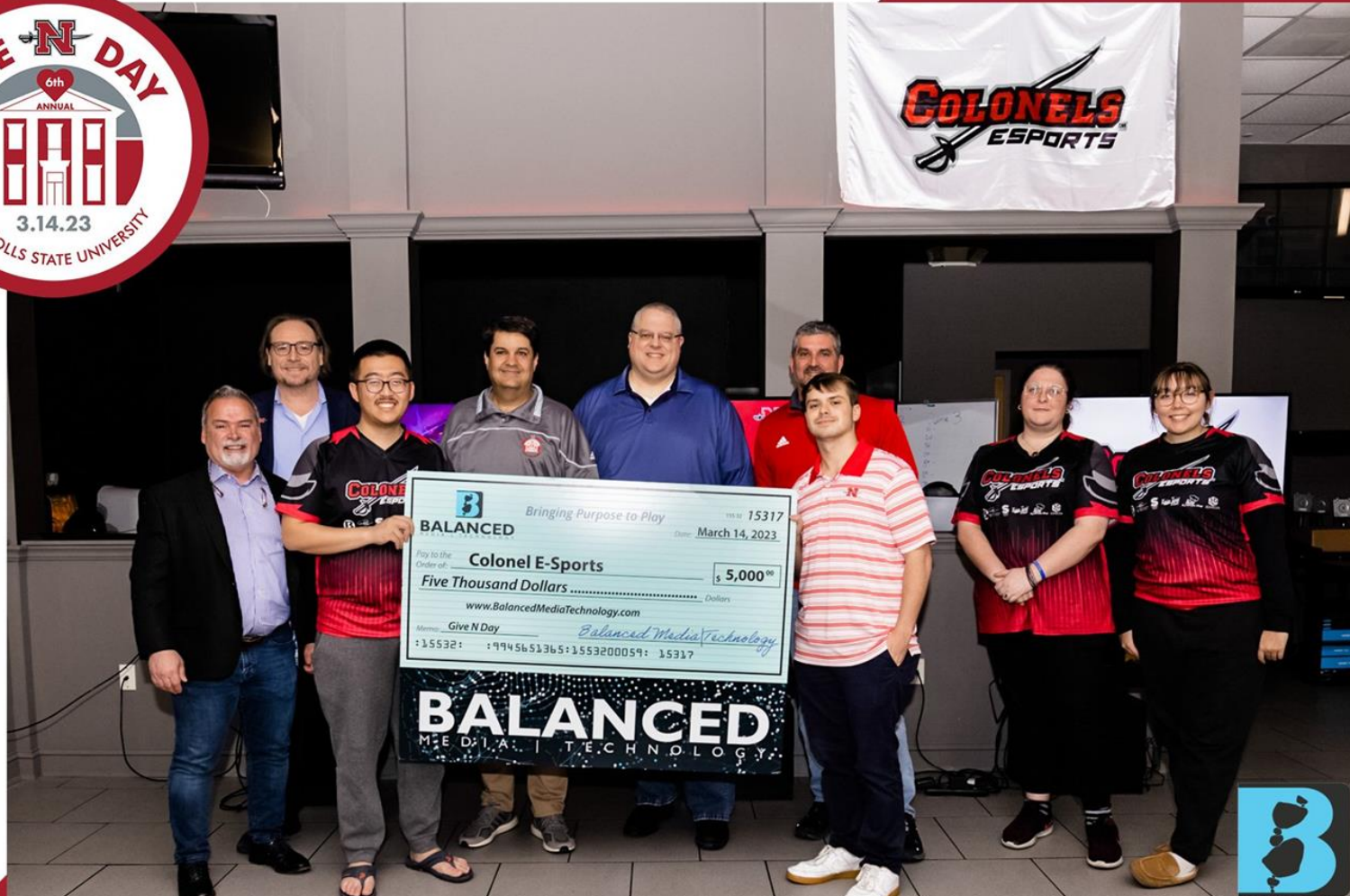






**THE COASTAL CENTER**  
AT NICHOLLS STATE UNIVERSITY

RESILIENCE



 Bringing Purpose to Play 15317  
**BALANCED** Date: March 14, 2023  
Pay to the Order of: **Colonel E-Sports** \$ 5,000<sup>00</sup>  
Five Thousand Dollars ..... Dollars  
www.BalancedMediaTechnology.com  
Memo: Give N Day *Balanced Media Technology*  
⑆15532⑆ : 9945651365⑆1553200059⑆ 15317

**BALANCED**  
MEDIA | TECHNOLOGY







# NEXT STEPS

- Groundbreaking ceremony planned for mid- to late-August, pending Governor's availability.
  
- Bid awarded to Ratcliff Construction Company, LLC
  - Base bid of \$15,124,000
  - Total bid of \$15,837,300 with three alternates
  
- Executive Director search has been extended to allow for more extensive candidate recruitment.