

# Implementation Update

BREN HAASE, EXECUTIVE DIRECTOR



# 113 ACTIVE PROJECTS

44

66

3

<i>PROJECT TYPE</i>	CONSTRUCTION	E & D	PLANNING
HURRICANE PROTECTION (33)	18	13	2
MARSH CREATION (39)	12	27	
RIDGE RESTORATION (4)	1	3	
SHORELINE PROTECTION (10)	4	6	
BARRIER ISLANDS/HEADLANDS (4)		4	
DIVERSIONS (4)	1	3	
HYDROLOGIC RESTORATION (6)	2	4	
OYSTER BARRIER REEF (1)	1		
RECREATIONAL USE (5)	4	1	
OTHER (7)	1	5	1

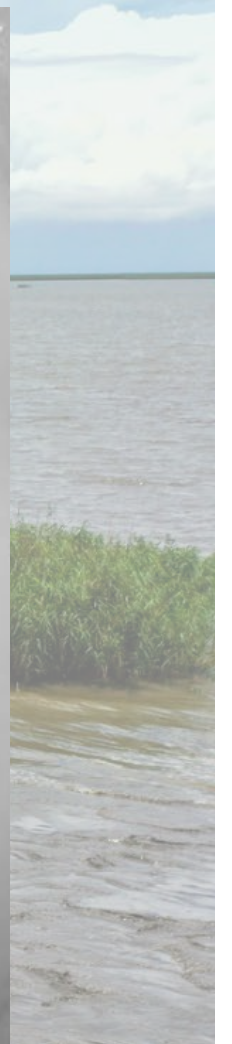
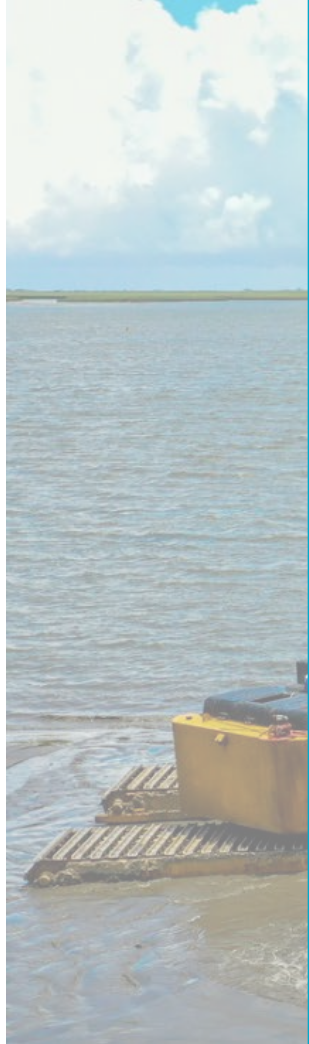


**SOUTH PASS BIRD ISLAND ENHANCEMENT**  
*Plaquemines Parish*



# SOUTH PASS BIRD ISLAND ENHANCEMENT

*Plaquemines Parish*





**SOUTH PASS BIRD  
ISLAND ENHANCEMENT**

# VIDEO

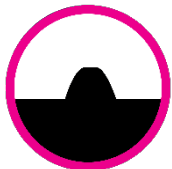


# SOUTH PASS BIRD ISLAND ENHANCEMENT

*Plaquemines Parish*

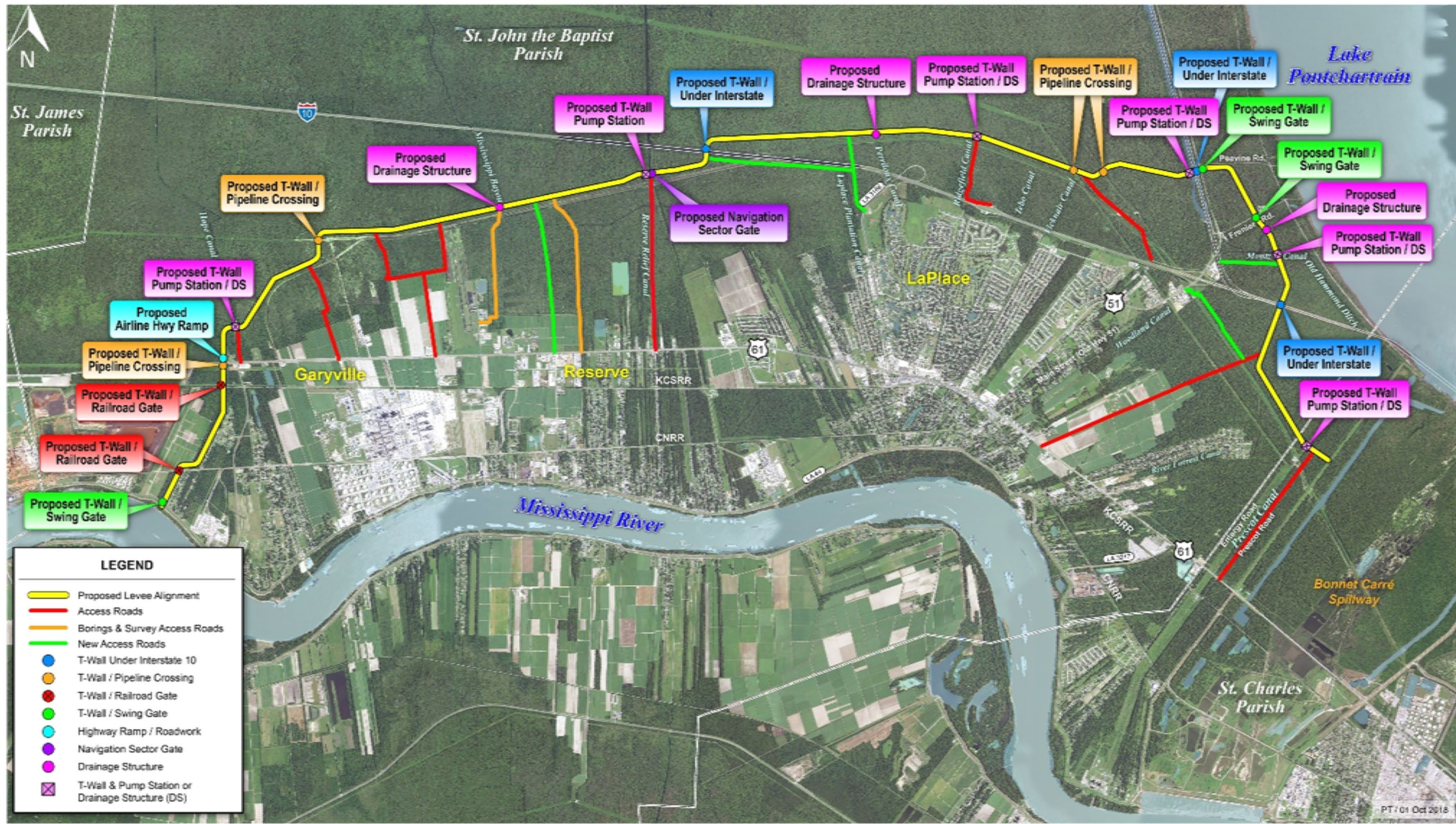
**41 JOBS**  
*NOT INCLUDING  
GOVERNMENT WORKERS*





## WEST SHORE-LAKE PONTCHARTRAIN

*St. Charles, St. James, St. John The Baptist Parishes*



**LEGEND**

- Proposed Levee Alignment
- Access Roads
- Borings & Survey Access Roads
- New Access Roads
- T-Wall Under Interstate 10
- T-Wall / Pipeline Crossing
- T-Wall / Railroad Gate
- T-Wall / Swing Gate
- Highway Ramp / Roadwork
- Navigation Sector Gate
- Drainage Structure
- T-Wall & Pump Station or Drainage Structure (DS)





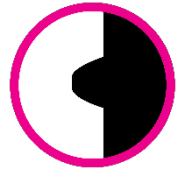
# WEST SHORE-LAKE PONTCHARTRAIN

*St. Charles, St. James, St. John The Baptist Parishes*



## WORK COMPLETED TO DATE:

- 9 Access Roads
- 3 sand/clay stockpile contracts
- 2 sand placement contracts



**WEST SHORE-LAKE  
PONTCHARTRAIN**

# VIDEO



# WEST SHORE-LAKE PONTCHARTRAIN

*St. Charles, St. James, St. John The Baptist Parishes*





2023

Louisiana's Comprehensive  
Water Plan for a Sustainable Coast

4TH EDITION

State of Louisiana  
The Honorable John Bel Edwards



# SPANISH PASS CELEBRATION

Plaquemines Parish



**The Spanish Pass Project is the largest marsh and ridge restoration project constructed to date**

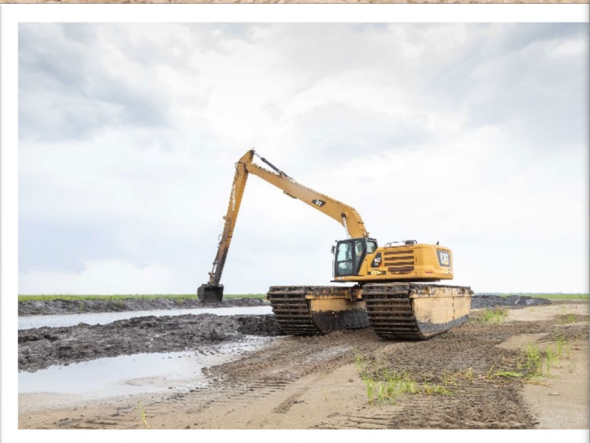


# BUCKTOWN LIVING SHORELINE - *GROUNDDBREAKING*

*Jefferson Parish*



# UPPER BARATARIA MARSH CREATION



**FOX 8 LOCAL FIRST**

News Live Video Hurricane Center Crime Weather Sports Investigations Español NOLA Weekend

## Coastal project near Lafitte used nearly two Superdomes worth of sediment

Upper Barataria Marsh Creation represents one of the largest coast projects to date

NEWS

NOAA  
4:15 | 89°  
FOX 8  
LOCAL FIRST

at 11:09 PM CDT

3) - Southeast of the town of Jean Lafitte, contractors for the National Oceanic and Atmospheric Administration pumped water into near 1,200 acres of new marsh.

Marsh Creation Project takes place in an area of the Louisiana coast suffering some of the most aggressive land

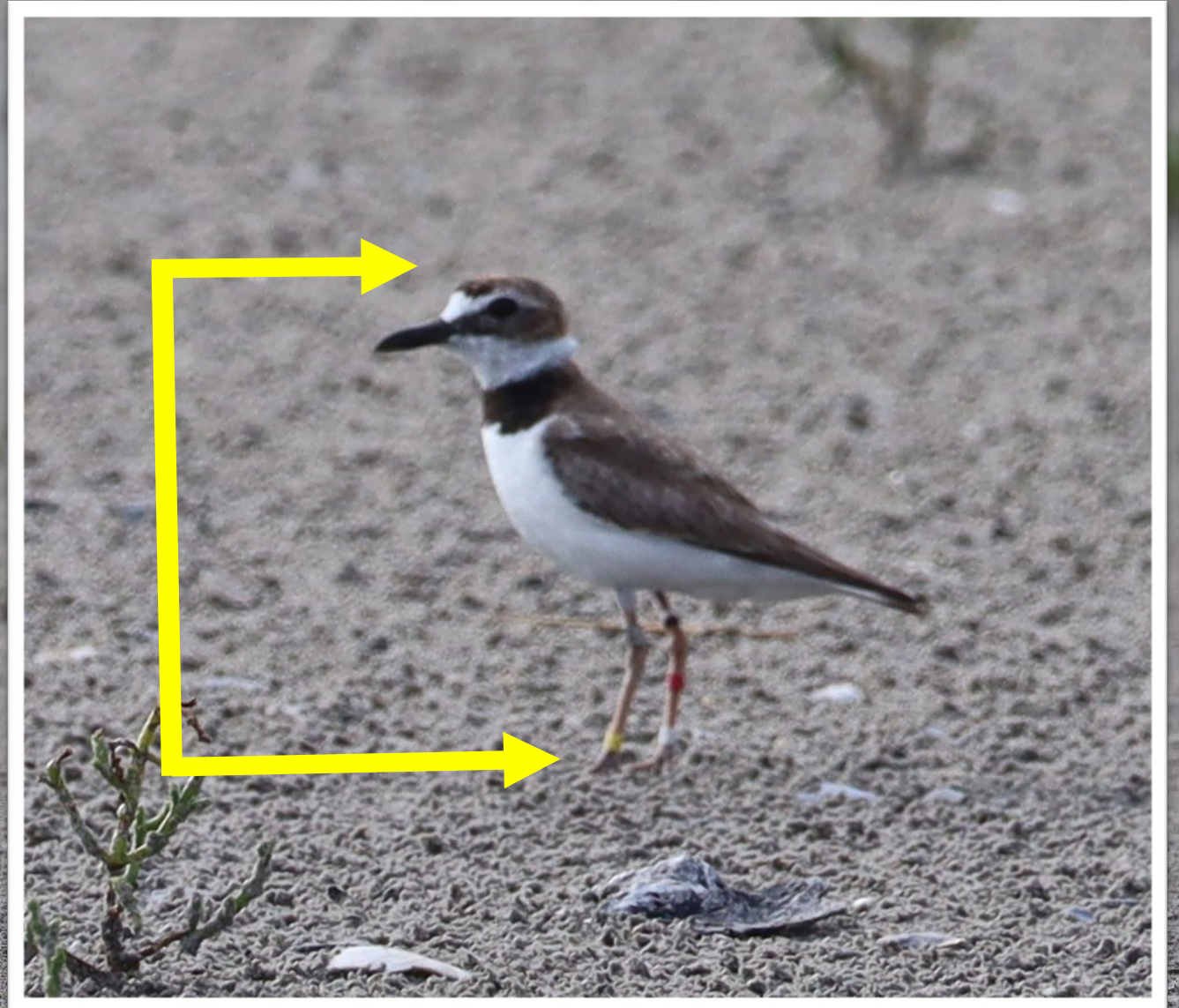
Over the last couple years, sediment has been dredged from the Mississippi River and pumped at least 13 miles to the project location.

# STATE OF THE COAST 2023 – *Together Again*





# WILSON THE PLOVER'S BIG ADVENTURE



Round Island, MS  
Chandeleur Islands



Google Earth

Data SIO, NOAA, U.S. Navy, NGA, GEBCO  
Image Landsat / Copernicus

600 mi



**CONNECT WITH US!**



***@LOUISIANACPRA***

