

Implementation Update

BREN HAASE, EXECUTIVE DIRECTOR



100 ACTIVE PROJECTS PROJECT TYPE	40 CONSTRUCTION	57 E & D	3 PLANNING
Hurricane Protection (26)	15	9	2
Marsh Creation (39)	12	27	
Ridge Restoration (2)	1	1	
Shoreline Protection (9)	3	6	
Barrier Island/Headlands (2)		2	
Diversions (4)	1	3	
Hydrologic Restoration (5)	2	3	
Oyster Barrier Reef (1)	1		
Recreational Use (5)	4	1	
Other (7)	1	5	1



Large-Scale Barataria Marsh Creation

Upper Barataria Component

Jefferson Parish



VIDEO



VIDEO



Taken 2/4/2023
Patrick M. Quigley
www.gulfcoaststarphoto.com
© 2023 by Patrick M. Quigley



Taken 2/4/2023
Patrick M. Quigley
www.gulfcoastairphoto.com
A SDAV owned small business.



VIDEO

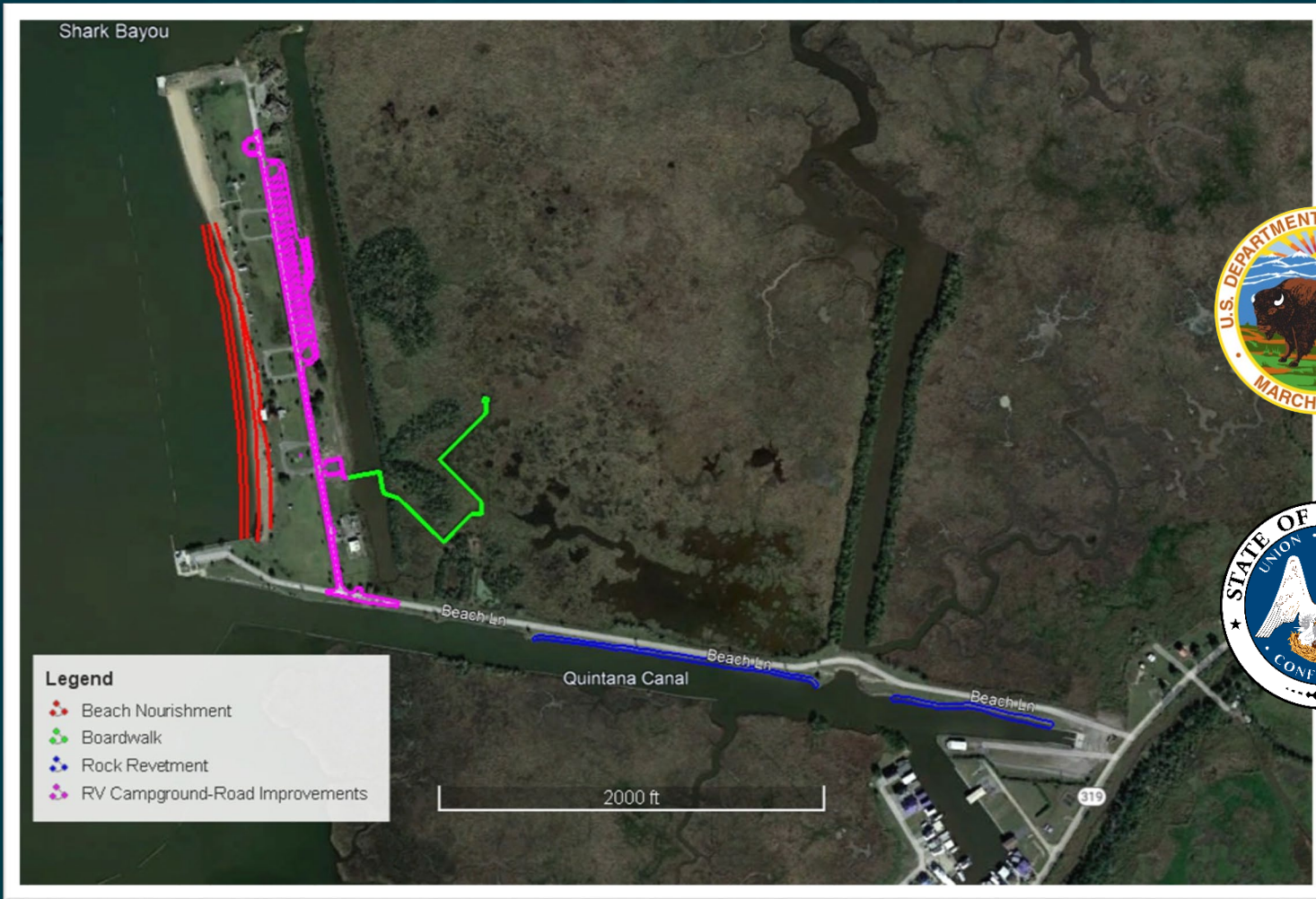


Scan to learn
more about
the project!

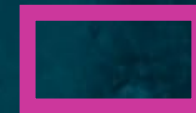


Cypremort State Park Improvements

Iberia & St. Mary Parish



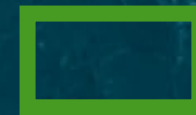
- Rock Revetment



- RV Campground /
Road Improvements



- Beach Nourishment



- Marsh
Boardwalk/Trail



Cypremort State Park Improvements

Iberia & St. Mary Parish

An aerial photograph of a coastal wetland area. The foreground is dominated by dense, brownish-green vegetation, likely marsh grasses, with several small, dark blue ponds scattered throughout. In the middle ground, a road with a few cars and some buildings is visible. The background shows a large body of water, possibly a bay or estuary, extending to the horizon under a clear blue sky. The word "VIDEO" is overlaid in large, white, sans-serif capital letters across the center of the image.

VIDEO



Cypremort State Park Improvements

Iberia & St. Mary Parish

86 JOBS

NOT INCLUDING GOVERNMENT WORKERS

Thomassee and Associates, LLC

Electrical Engineering Consulting Firm



**SOUTHERN
CONSTRUCTORS**

" Building the future, together "



FRISCO
INDUSTRIAL CONTRACTORS



Long Point Bayou Marsh Creation

Cameron Parish





— Confined Disposal Marsh
Creation & Nourishment



— Project Boundary

- First project designed by CPRA, but bid and constructed by the USACE

- First project with E&D funded through CWPPRA and construction funded by State and Federal NRDA Trustees using non-Deepwater Horizon NRDA oil spill settlement funds

Long Point Bayou Marsh Creation

Cameron Parish



VIDEO

Pre-Construction - October 2019



Long Point Bayou Marsh Creation

Cameron Parish

INDEPENDENT
LAND SERVICES LLC
 A Professional Land Services Company

intertek
psi

FENSTERMAKER

OIL
 LAND SERVICES

ENCOS


 CE HYDRO, LLC

R. CHRISTOPHER
GOODWIN
 & ASSOCIATES, INC.

DEAN

MIKE
HOOKS
 LLC

MORRISON SURVEYING
MSI

STATE OF LOUISIANA
 OIL SPILL COORDINATOR'S OFFICE
 DEPARTMENT OF PUBLIC SAFETY


US Army Corps
of Engineers
 New Orleans District

UNITED STATES
 ENVIRONMENTAL PROTECTION AGENCY

2023 National Coastal Resilience Fund

Request for Proposals

\$140 Million

in grants



NFWF

Pre-Proposal Due Date:

Wednesday, April 12, 2023

by 11:59 PM ET

America the Beautiful Challenge 2023

Request for Proposals

\$116 Million

in grants

Pre-Proposal Due Date:

Thursday, April 20, 2023

by 11:59 PM ET



NFWF



CSAP 2022

Coastal Science Assistantships



**Abhishek
Kumar Tiwari
Louisiana Tech**

Jay Wang, PhD



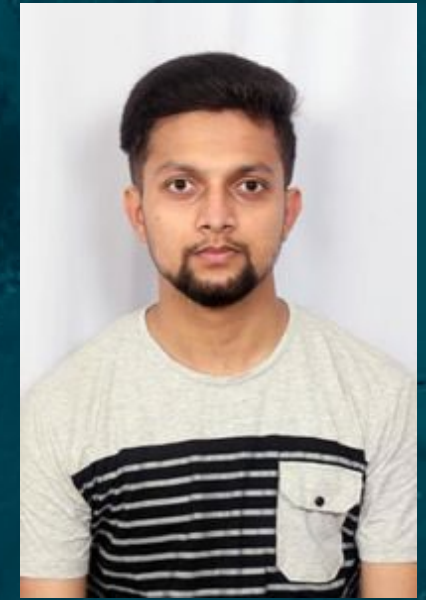
**Donald
Davidson
UNO**

*Madeline Foster-
Martinez, PhD*



**Bonnie
Slaton
UL - Lafayette**

Pail Leberg, PhD



**Santosh
Ghimire
LSU**

*Saberethinam
Kameshwar, PhD*

2023 Draft Coastal Master Plan Outreach



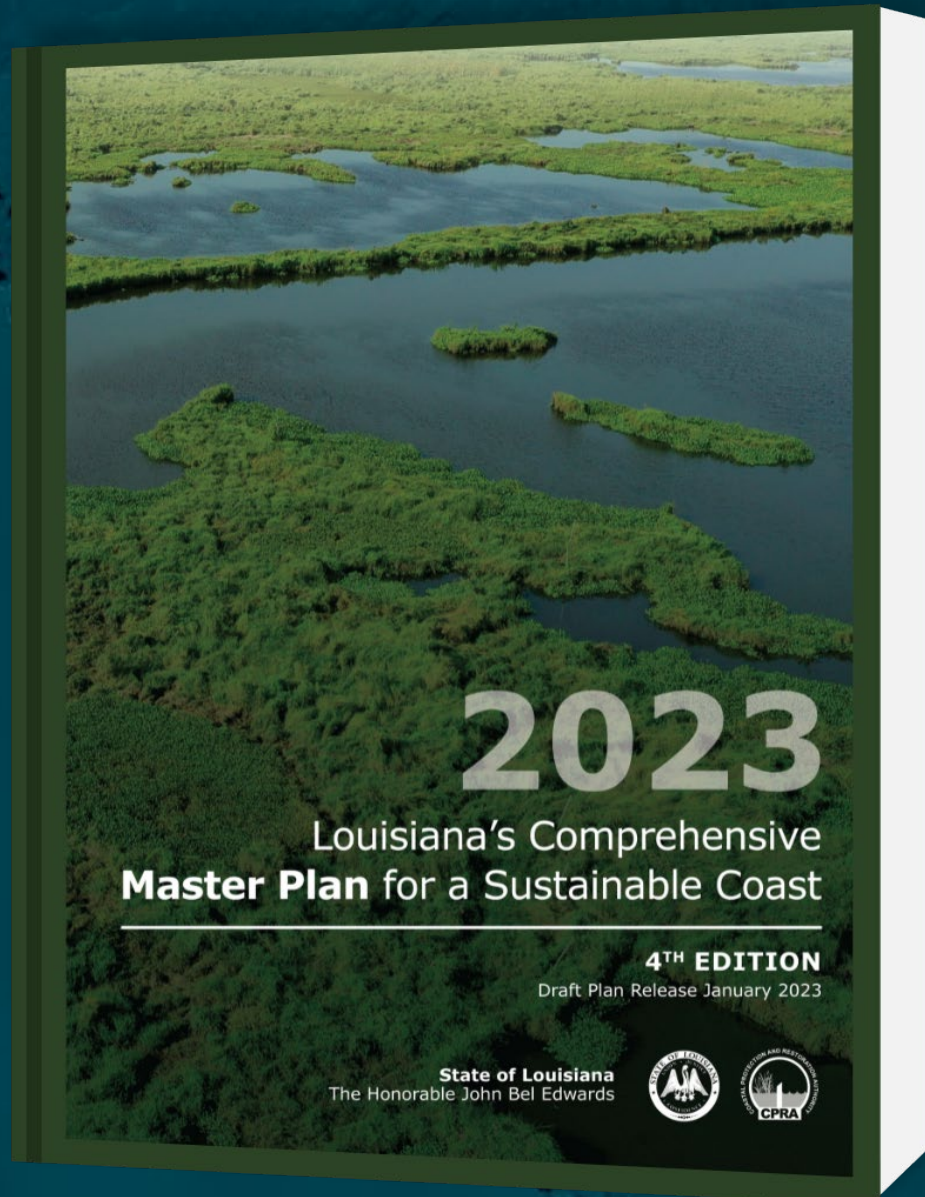
Lake Charles Public Hearing

Lutcher Community Meeting

**PUBLIC COMMENTS
ACCEPTED THROUGH
MARCH 25, 2023!**

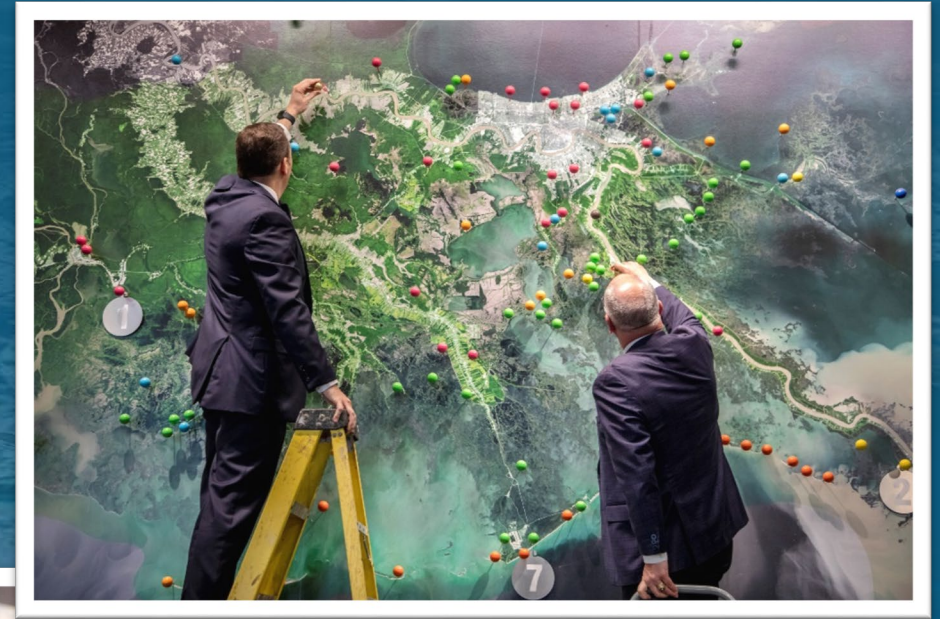
MASTERPLAN@LA.GOV

WWW.COASTAL.LA.GOV



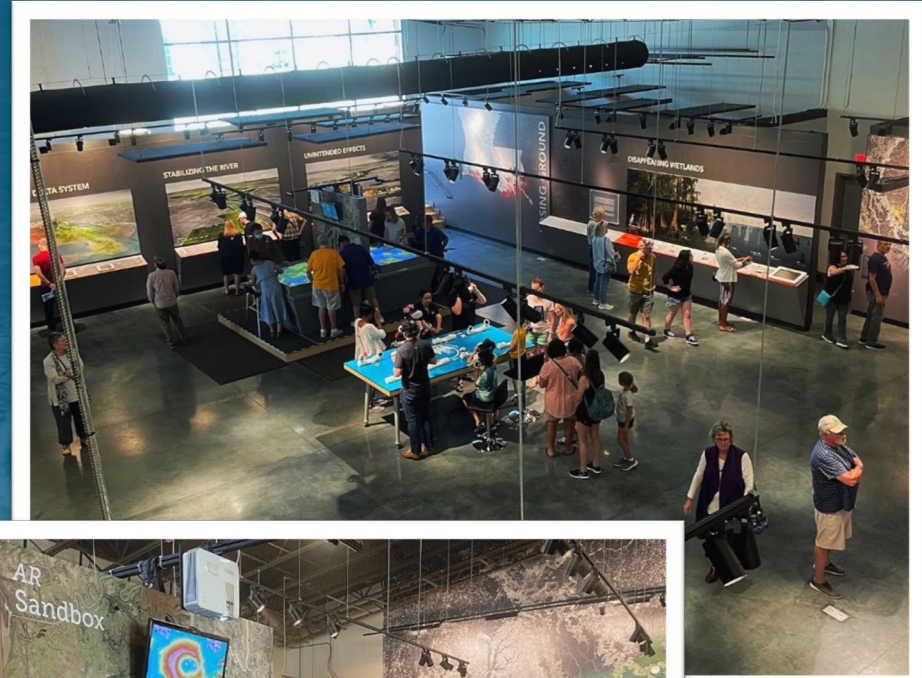
5-Year Anniversary Celebration

LSU Center for River Studies



First FREE Sundays are back!

LSU Center for River Studies



COASTAL PROTECTION AND RESTORATION AUTHORITY

CONNECT WITH US!



@LouisianaCPRA

