

Implementation Update

BREN HAASE, EXECUTIVE DIRECTOR



100 ACTIVE PROJECTS PROJECT TYPE	39 CONSTRUCTION	58 E & D	3 PLANNING
Hurricane Protection (26)	15	9	2
Marsh Creation (41)	12	29	
Ridge Restoration (2)	1	1	
Shoreline Protection (9)	2	7	
Barrier Island/Headlands (2)		2	
Diversions (4)	1	3	
Hydrologic Restoration (5)	2	3	
Oyster Barrier Reef (1)	1		
Recreational Use (5)	4	1	
Other (5)	1	3	1



Biloxi Marsh Living Shoreline

St. Bernard Parish



11 MILES

artificial reef breakwater

\$66.6M

for Construction, O&M,
Monitoring

Funded by:



NRDA

Estimated completion:

EARLY 2023

VIDEO

Biloxi Marsh Living Shoreline

St. Bernard Parish









Biloxi Marsh Living Shoreline

St. Bernard Parish

109 JOBS

NOT INCLUDING GOVERNMENT WORKERS





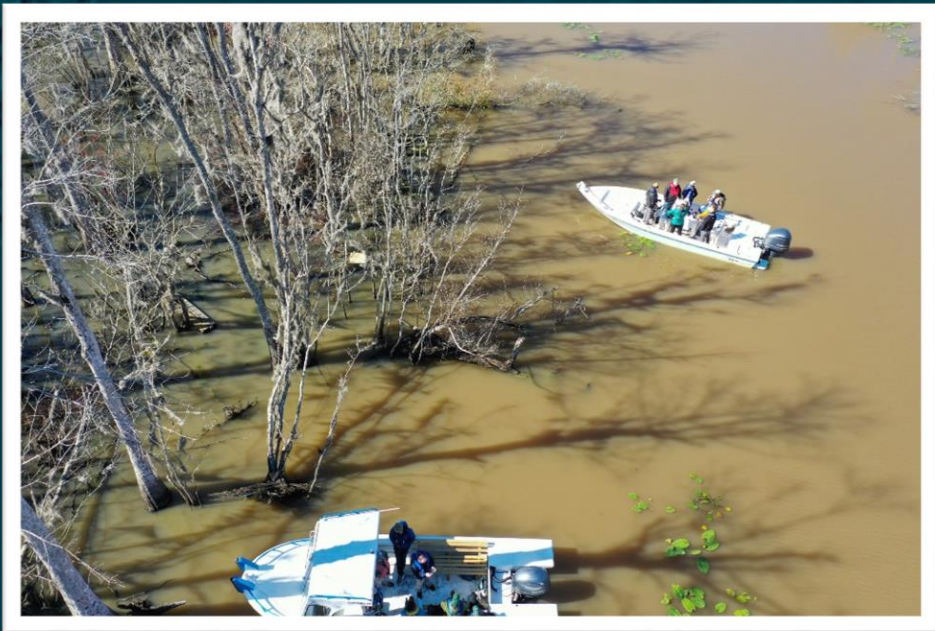
River Reintroduction into Maurepas Swamp

Ascension, St. James, and St. John the Baptist Parishes



VIDEO

River Reintroduction into Maurepas Swamp



BATON ROUGE NEW ORLEANS ACADIANA LAKE CHARLES GAMBIT ADORE

LOG IN

SUBSCRIBE

VIEW E-EDITION

NEWSLETTERS

WEATHER NEWS SPORTS SPORTS BETTING ENTERTAINMENT/LIFE OPINIONS LEGALS HOMES OBITUARIES JOBS CALENDAR STORE

63°

Swamp life: Plan to revitalize Maurepas Swamp finally moving ahead



1 of 7



A rare old-growth cypress tree that is estimated to be about 300 years old in Maurepas Swamp on Friday, February 3, 2023. Most of this region was deforested decades ago. The new Mississippi River diversion is expected to revitalize this area near Gramercy. (Photo by Chris Granger | The Times-Picayune | The New Orleans Advocate)

STAFF PHOTO BY CHRIS GRANGER



BY MIKE SMITH | STAFF WRITER
FEB 5, 2023 - 4:02 AM

It is a scene straight out of Louisiana lore, a seeming exemplar of swamp life: Craggy cypress trees, moss dangling from their branches, stretch out for thousands of acres atop dark, shallow waters.

FOR YOU, FROM NOLA

- Offshore wind energy plans in the Gulf take a back seat to oil drilling under new law
- Commercial fishers rail against Mid-Barataria Sediment Diversion plan at hearing
- Supreme Court ruling could roll back wetlands protections in much of Mississippi basin
- Louisiana's climate action plan sees billions pledged to reduce emissions after first year



River Reintroduction into Maurepas Swamp

Ascension, St. James, and St. John the Baptist Parishes

111 JOBS

NOT INCLUDING GOVERNMENT WORKERS



THE WATER INSTITUTE



RECON

AECOM



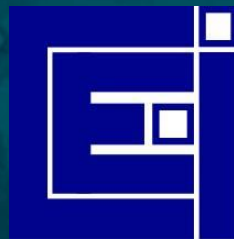
EPA



SOUTHEASTERN LOUISIANA UNIVERSITY

OATS & MARINO LOUISIANA ATTORNEYS AND COUNSELORS AT LAW

LSU



Wink Engineering, LLC

A Brown & Root Company



EVANS-GRAVES ENGINEERS, INC. ENGINEERING CONSULTANTS



EUSTIS ENGINEERING L.L.C.

SINCE 1946



The background features a white silhouette of the state of Louisiana on a dark teal map. A circular callout with an orange border and a downward-pointing triangle shows a yellow excavator working on a muddy, flat area, likely a marsh or wetland site. In the bottom left corner, there is a circular inset with a green border showing a field of tall grasses.

New Orleans Landbridge Shoreline Stabilization and Marsh Creation

Orleans Parish

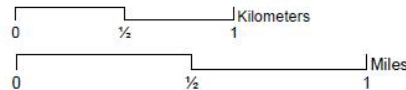
**New Orleans Land Bridge
Shoreline Stabilization
& Marsh Creation Project,
PO-0169
Orleans Parish, LA**

-  Marsh Creation
-  Equipment Access Corridor & Dredge Pipeline Corridor
-  Equipment Access Corridor
-  Armored Earthen Containment Dike
-  Earthen Containment Dikes
-  Borrow Area
-  Roads

All project features are graphical representations only, are subject to change, and may not reflect true location or dimension



1:24,000



Source:
Coastal Protection and Restoration
Authority of Louisiana
Imagery: ESRI World
Map Date: 11/22/2021
//2022040028

284 ACRES

Brackish marsh creation and
nourishment

\$25.4 M

Total Project Cost

Funded through:

CWPPRA

Estimated completion:

SPRING 2023

New Orleans Landbridge Shoreline Stabilization and Marsh Creation

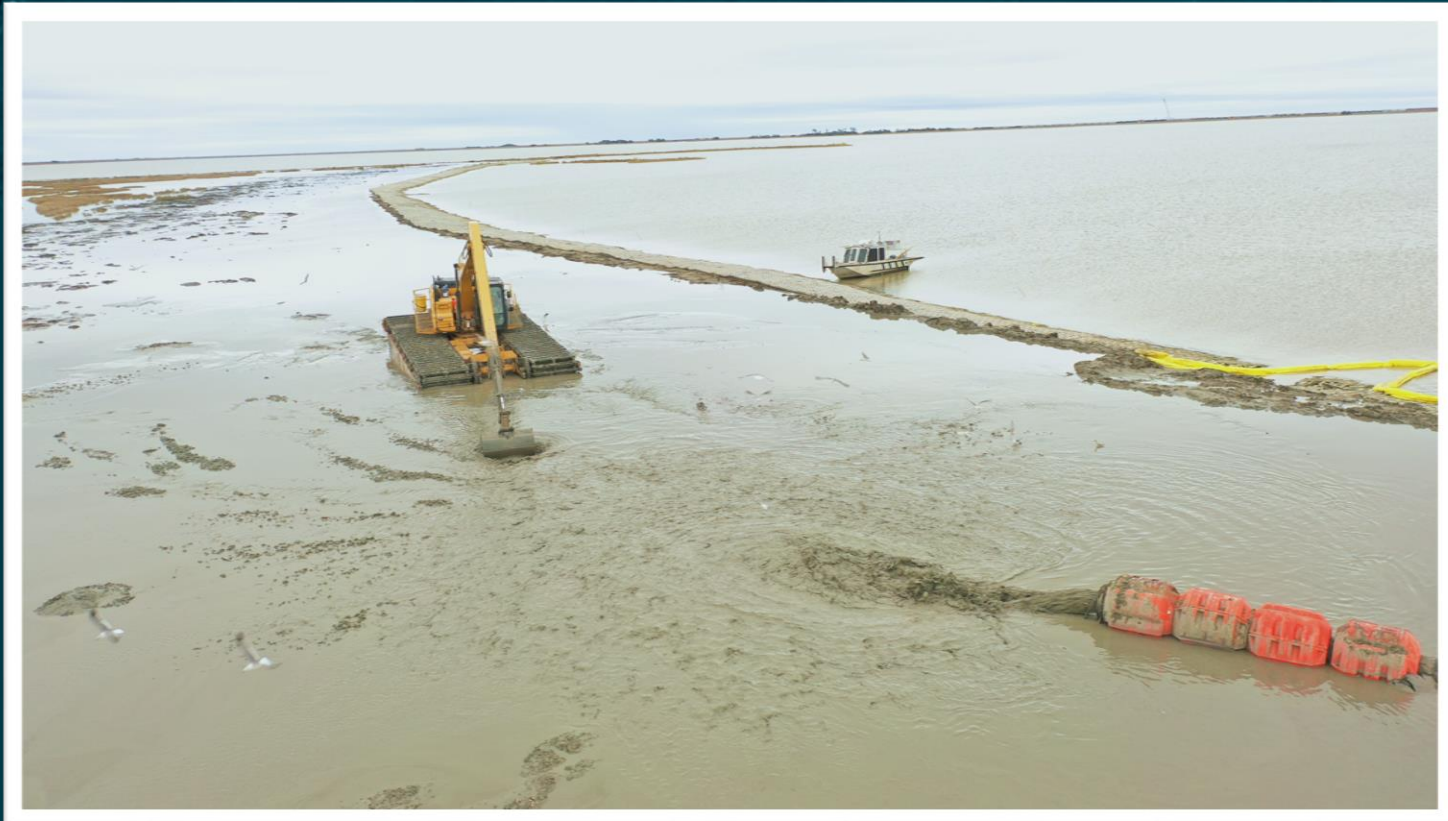
Orleans Parish



VIDEO

**New Orleans Landbridge Shoreline
Stabilization and Marsh Creation**

Orleans Parish





FOX 8 LOCAL FIRST



New Orleans Landbridge Shoreline Stabilization and Marsh Creation

Orleans Parish

45 JOBS

NOT INCLUDING GOVERNMENT WORKERS



CWPPRA Phase 1 Approvals (E&D)

**Northwest Little Lake
Marsh Creation (NRCS)**

**Yscloskey Marsh
Creation (USFWS)**

Phase 1 Budget
\$3,455,646

Phase 1 Budget
\$3,741,913

CWPPRA Phase 2 Approvals (CON)

**Grand Bayou Ridge and Marsh
Restoration - Increment 1 (USFWS)**

Phase 2 Cost \$48,865,602

**East Delacroix Marsh Creation and
Terracing (NMFS)**

Phase 2 Cost = \$40,750,478

**Bayou Cane Marsh Creation
(USFWS)**

Phase 2 Cost \$38,073,824

**Island Road Marsh Creation and
Nourishment Project (NMFS)**

Phase 2 Cost \$30,646,103

CPRA Safety Measures



100% RATING

ON A RECENT SAFETY AUDIT

Navigation Risk Reduction Measures

CWPPRA Navigation Aids and Signage

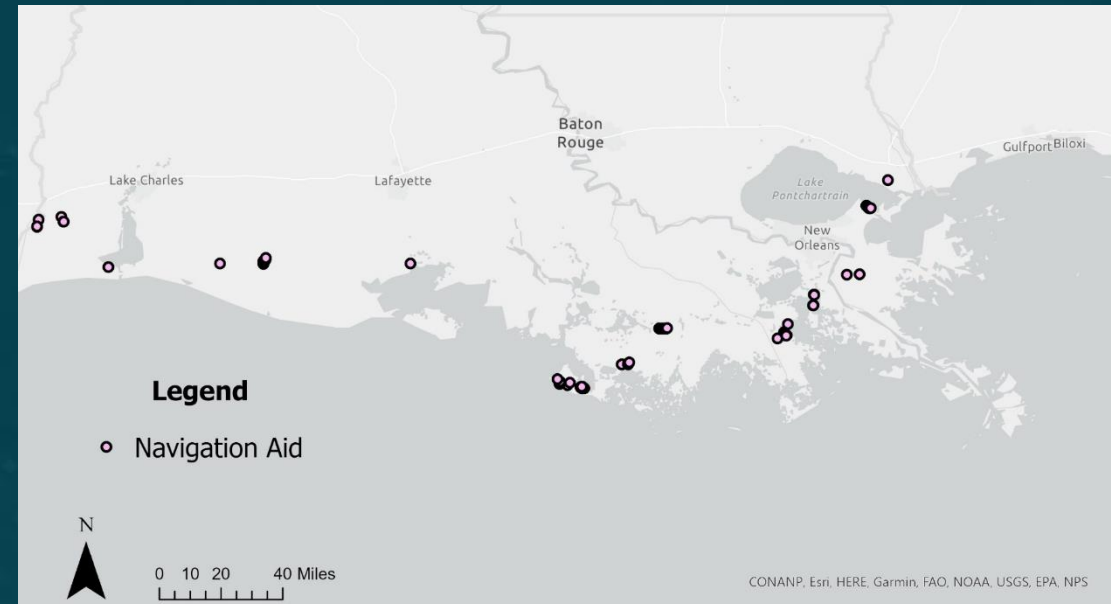
- Funds inspection and maintenance of 391 existing navigation aids (warning signs, lights) to reduce risk and protect investments
- Awaiting formal landrights agreements before final bid out

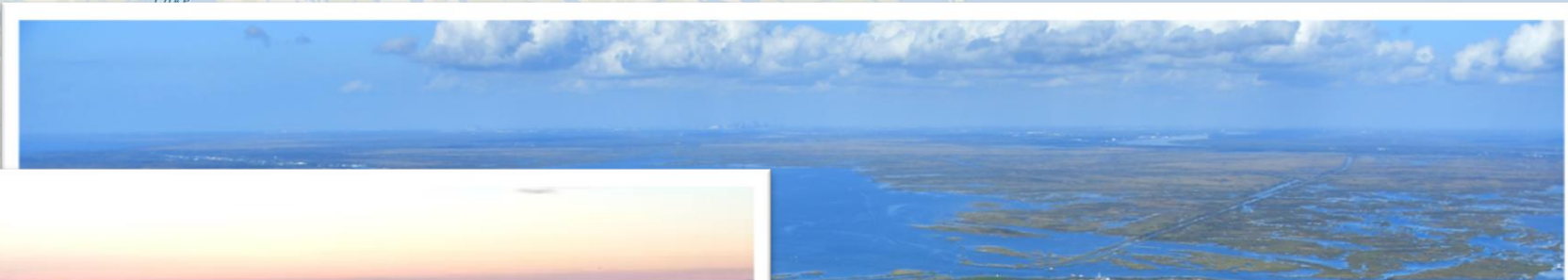
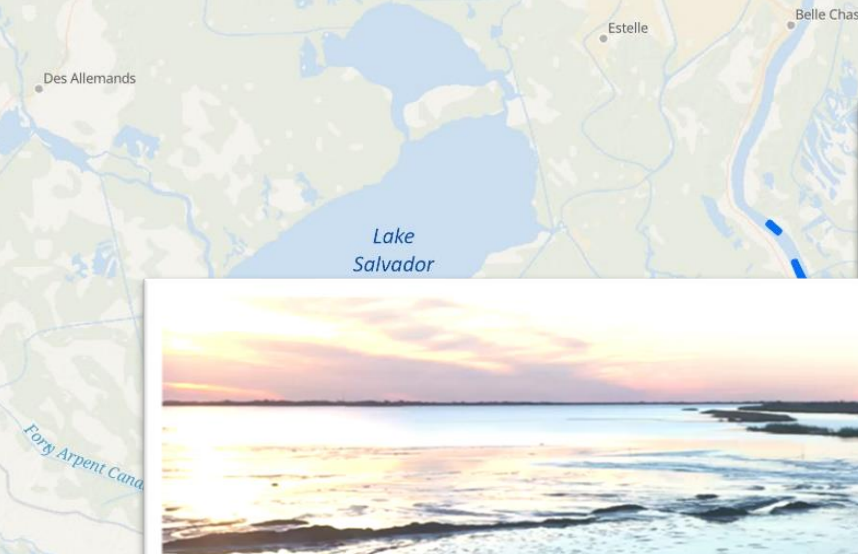


Warning sign on Caernarvon Diversion Outfall Management project

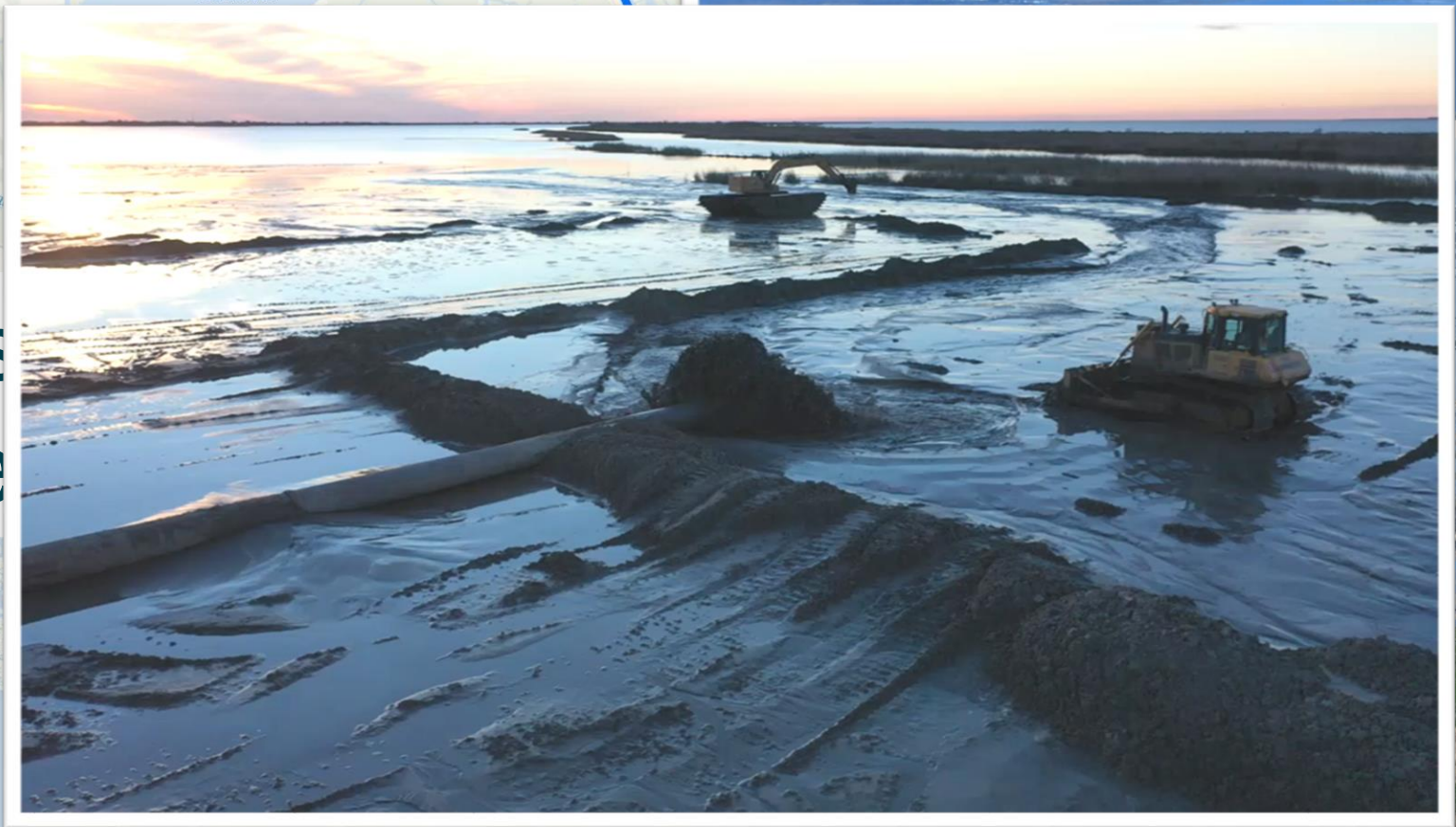
NOAA Office of Coast Survey (OCS) Charts

- Coordination with OCS to include signage from restoration projects on NOAA Navigational Charts

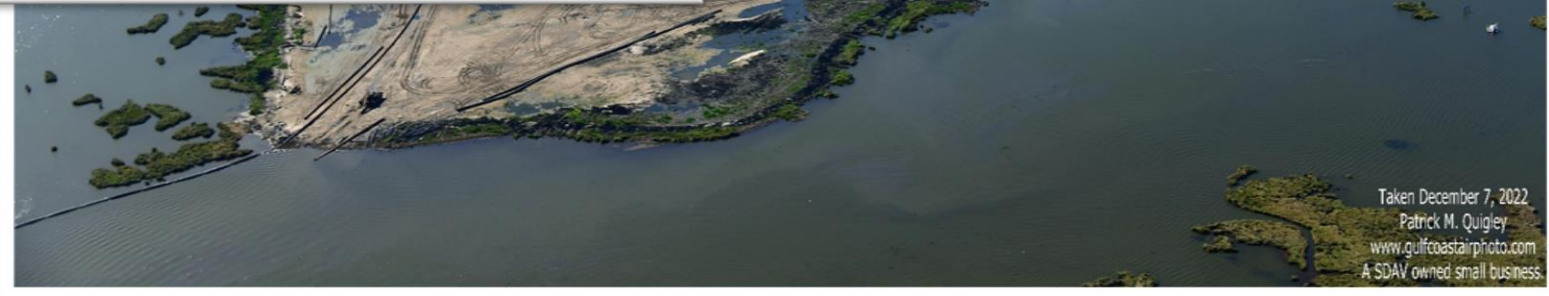




Mis Dre



www.gulfcoastairphoto.com
A SDAV owned small business



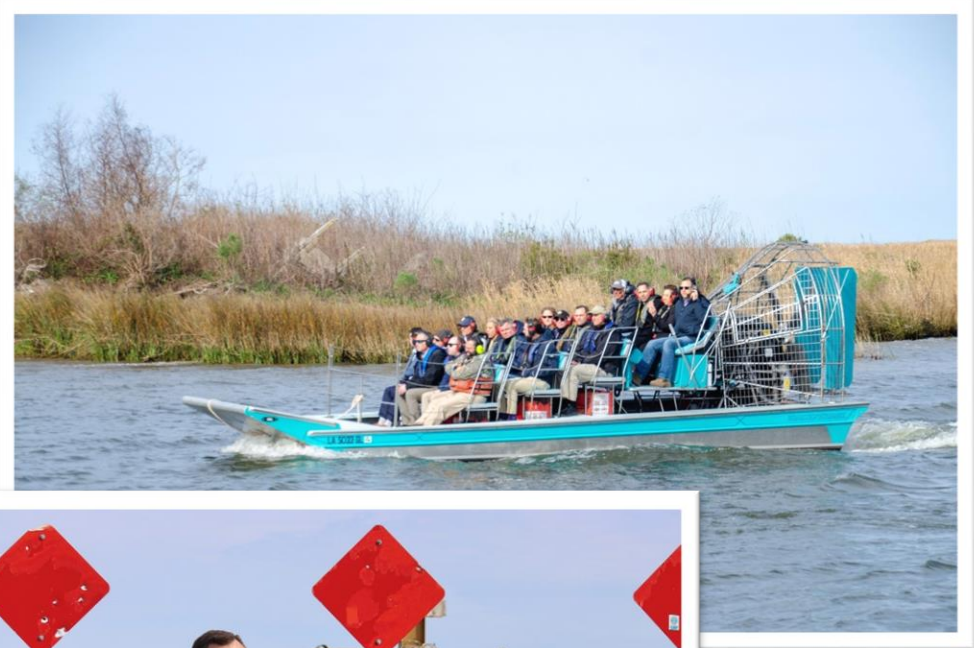
Taken December 7, 2022
Patrick M. Quigley
www.gulfcoastairphoto.com
A SDAV owned small business

Coast & Climate 101

North Louisiana



St. Bernard Parish Coastal Progress Celebration



'Helping protect us': Louisiana's biggest marsh creation project showcased

Work will create 2,800 acres of marsh near Shell Beach



St. Bernard Parish President Guy McInnis speaks during an event in Shell Beach as officials celebrated the coastal protection progress in St. Bernard Parish on Friday, January 20, 2023. (Photo by Brett Duke, NOLA.com | The Times-Picayune | The New Orleans Advocate)
STAFF PHOTO BY BRETT DUKE

f t e i s

BY MIKE SMITH | STAFF WRITER
JAN 20, 2023 - 5:02 PM

The cross rising from the water at the end of the road in Shell Beach stands as a poignant memorial for Hurricane Katrina's victims – and state officials say Louisiana's biggest marsh creation project under construction behind it will help limit such tragedies

1 of 13
< >

FOR YOU, FROM NOLA

- Commercial fishers rail against Mid-Barataria Sediment Diversion plan at hearing
- Supreme Court ruling could roll back wetlands protections in much of Mississippi basin
- Offshore wind energy plans in the Gulf take a back seat to oil drilling under new law
- Louisiana's climate action plan sees billions pledged to reduce emissions after first year

COASTAL DAY AT THE
LOUISIANA LEGISLATURE



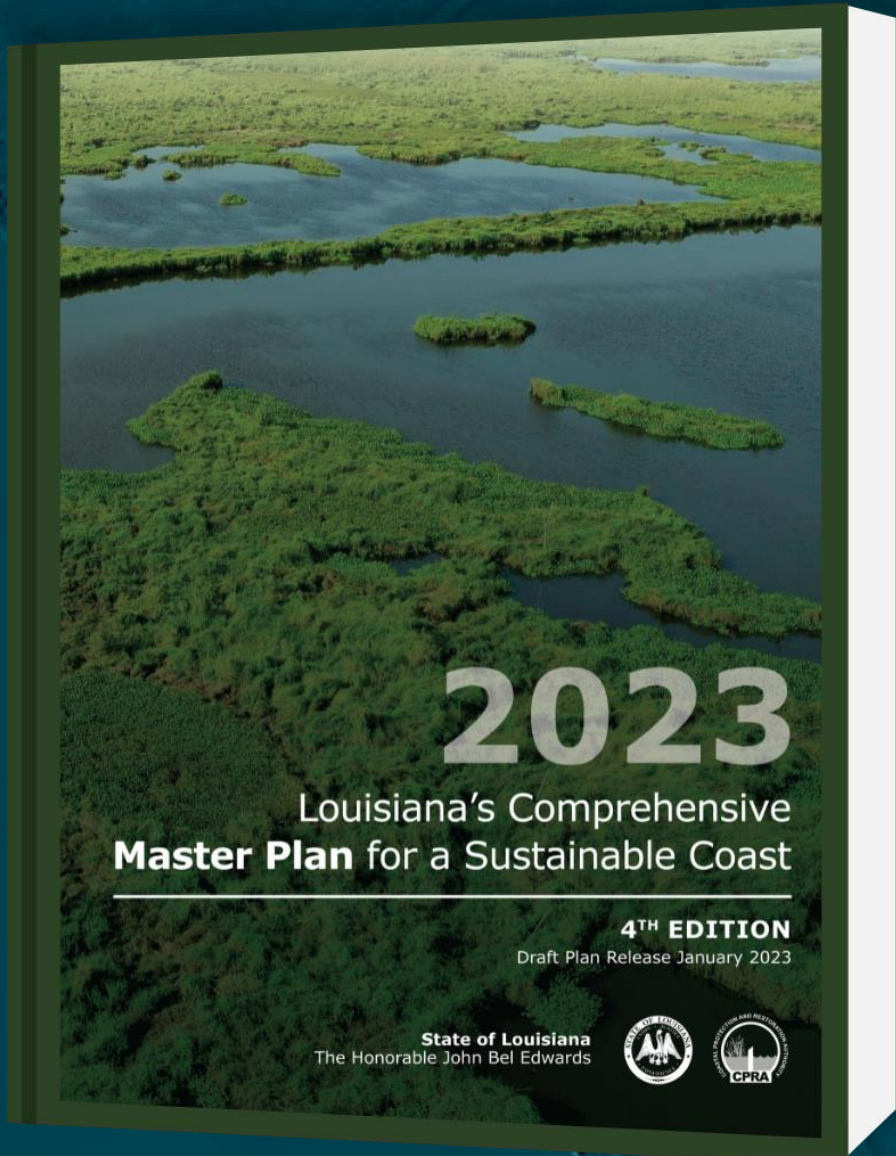
SAVE THE DATE

MONDAY, APRIL 24, 2023



2023 DRAFT Coastal Master Plan – Public Hearings





FINAL PUBLIC HEARING!

WWW.COASTAL.LA.GOV

LAKE CHARLES

Burton Coliseum Complex

7001 Gulf Highway

Lake Charles, LA 70607

Submit public comments to
masterplan@la.gov through March 25, 2023.



Travis Moore
@TMoose765



Reconnected with an ole feathered friend this week. DN1 was a brown pelican I helped band in 2020 in an effort to monitor nesting success after we restored Queen Bess island. I've been scanning the skies for years hoping to see one...only to find two of them dining at Spahrs.



CERTIFICATE OF
AWARD

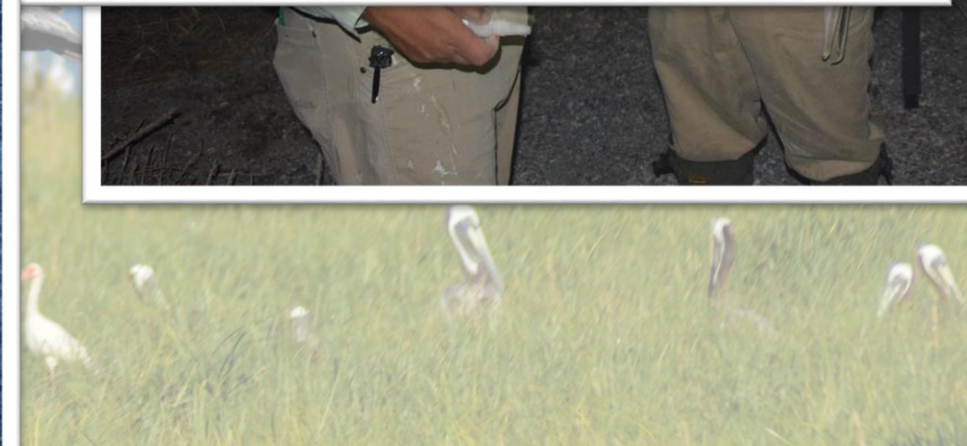
TRAVIS MOORE

Banding Data

Band Number 1238-08442 DN1
Species BROWN PELICAN
Age of Bird HATCHED IN 2018 OR EARLIER
Location NEAR GRAND ISLE, JEFFERSON PARISH, LA
 29.30528; LON: -89.95861)
Bander LA DEPT OF WILDLIFE & FISHERIES
 Mr. LARRY A REYNOLDS
 WILDLIFE DIVISION, LDWF
 2000 QUAIL DRIVE
 BATON ROUGE, LA 70808

Encounter Data

Location DES ALLEMANDS, LAFOURCHE PARISH, LA
 LOUISIANA, UNITED STATES
 Desc: 3682 HWY 90 EAST, DES ALLEMANDS, LA



COASTAL PROTECTION AND RESTORATION AUTHORITY

CONNECT WITH US!



@LouisianaCPRA

