

CPRA BOARD MEETING

STATUS UPDATE OF USACE FEASIBILITY STUDIES:

- BBA18 STUDIES
- NEW STARTS
- FUTURE WORK

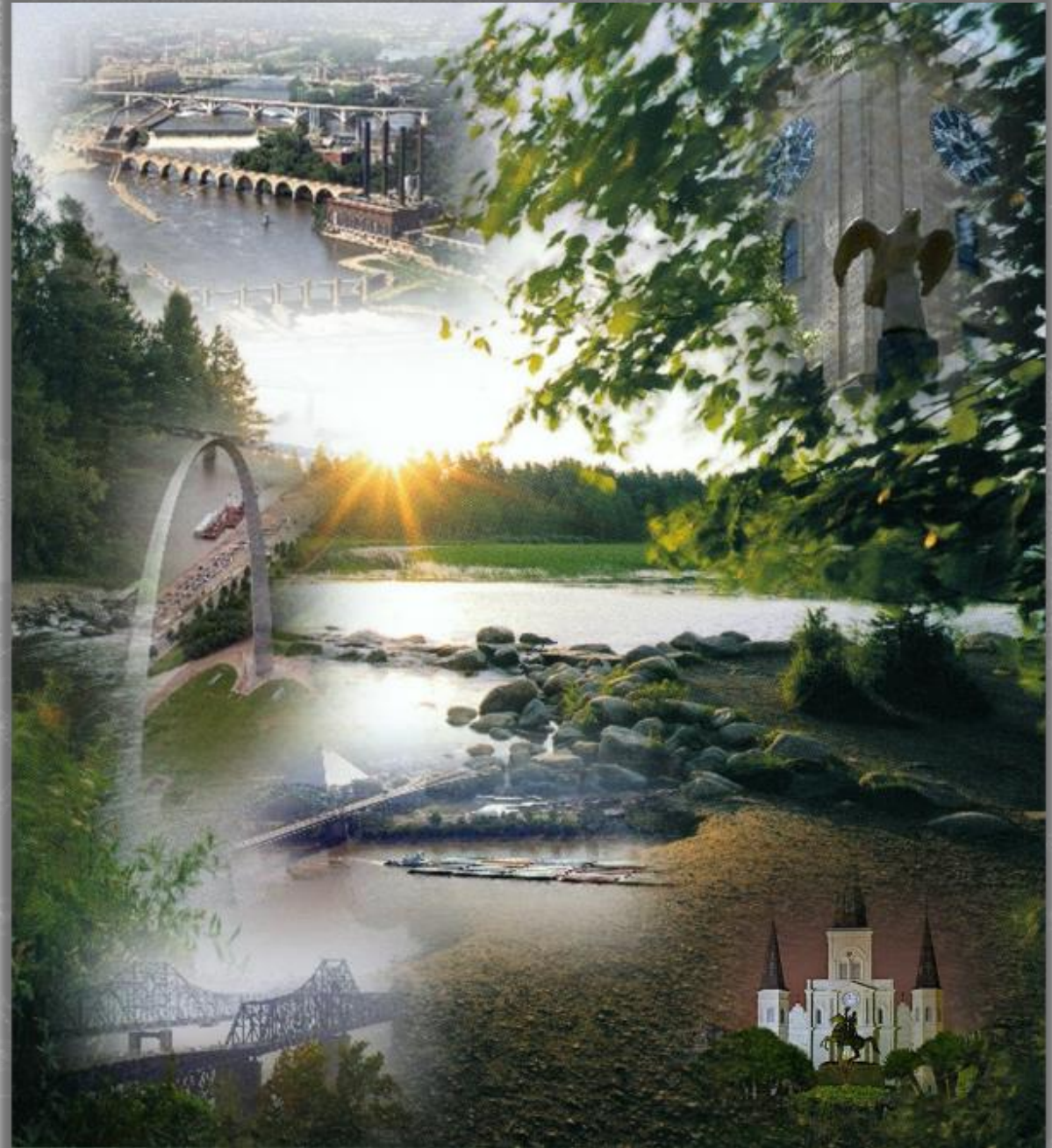
U.S. Army Corps of Engineers
New Orleans District
March 16, 2022



US Army Corps
of Engineers®



BUILDING STRONG®
and Taking Care of People!



BBA-18 STUDIES

Amite River
and Tributaries

St. Tammany
Parish

South Central
Coast

LPV Levee
Lifts GRR

Upper
Barataria

WBV Levee
Lifts GRR

LEGEND

- St Tammany Parish
- South Central Coast (FRM)
- Upper Barataria (FRM)
- Amite River & Tributaries (FRM)
- Lake Pontchartrain & Vicinity (LPV) GRR
- West Bank & Vicinity (WBV) GRR



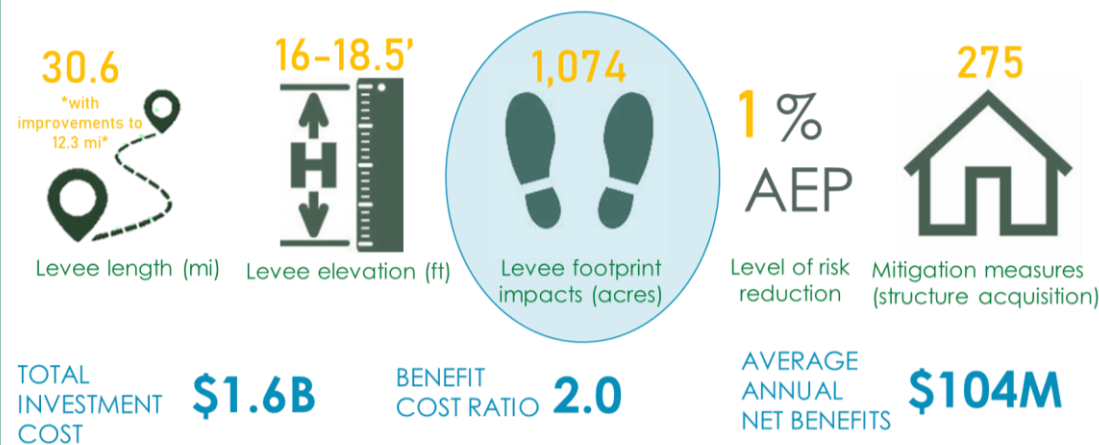
UPPER BARATARIA BASIN

- Project Description
 - Coastal Storm Risk Management for the Upper Barataria Basin
 - Non-Federal Sponsor: CPRA
- Chief's Report signed 28 January 2022
- \$8M in Preconstruction Engineering and Design (PED) funding allocated through the Disaster Relief Supplemental Appropriations Act
 - Working with CPRA to identify priorities/path forward
 - Data collection, USFWS coordination, first set of P&S
 - Funds not yet received at MVN
 - Design Agreement Required
- Looking forward
 - Construction Authorization/Appropriations Needed



RECOMMENDED PLAN

16-18.5' levee including 12.3 mi of existing levee/floodwall improvements built to a 1% Annual Exceedance Probability (AEP), Intermediate Sea Level Rise conditions were assumed and included in the designs



BUILDING STRONG®
and Taking Care of People!

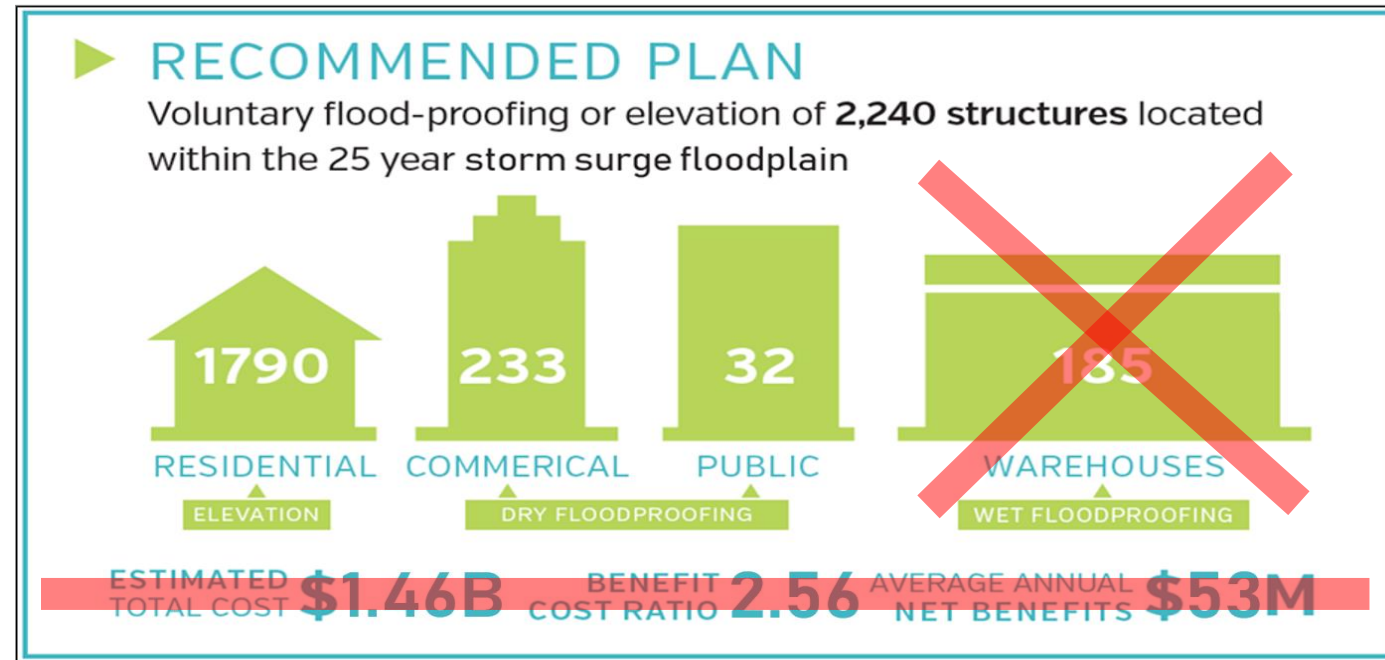


SOUTH CENTRAL COAST

4



- Project Description
 - Coastal Storm Risk Management for Iberia, St. Martin and St. Mary Parishes
 - Non-Federal Sponsor: CPRA
- Recommended Plan
 - Removing wet floodproofing for contents; not legally compliant (FCA 1974)
 - Costs will decrease; benefits will decrease; BCR still >1
- Path Forward
 - Modify Final Feasibility Report to present two plans:
 - Maximizes Net Benefits Plan (includes everything; Corps cannot recommend)
 - Recommended Plan (includes everything except wet floodproofing for contents)
 - Chief's Report in May 2022 to accommodate potential WRDA2022 authorization



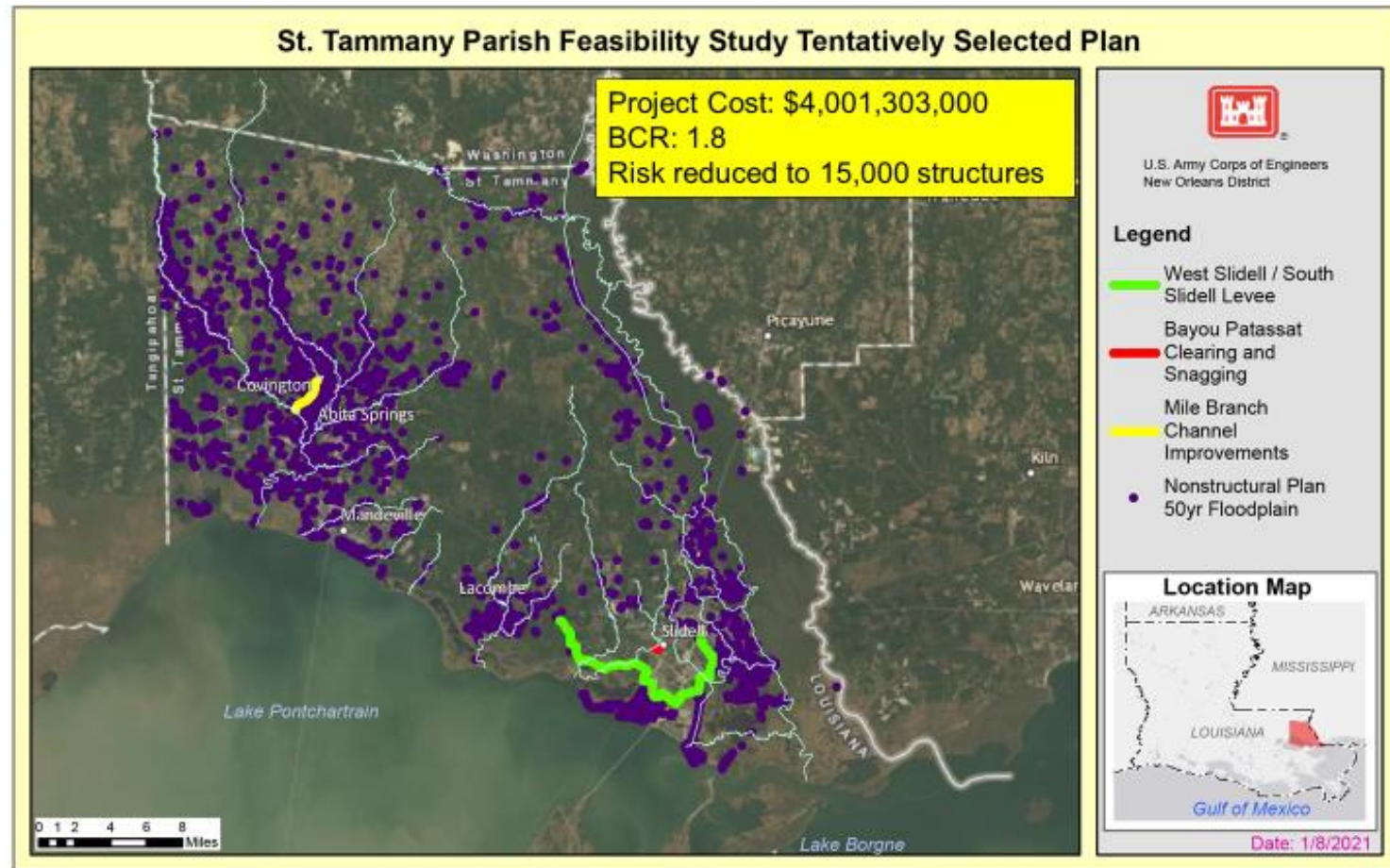
BUILDING STRONG®
and Taking Care of People!



ST. TAMMANY PARISH



- Project Description
 - Flood Risk Management and Coastal Storm Risk Management for St. Tammany Parish
 - Non-Federal Sponsor: CPRA
- Tentatively Selected Plan (\$4B; BCR 1.8)
 - Clearing and Snagging of Bayou Patassat
 - Channel Deepening of Mile Branch
 - West/South Slidell Levee
 - Nonstructural Plan
- Exemption request for additional \$1.77M and 18 months endorsed by HQUSACE
 - Levee optimization
 - Nonstructural subaggregation
 - USFWS Coordination
 - Environmental/NEPA Requirements
- Chief's Report scheduled May 2024

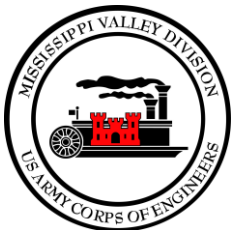
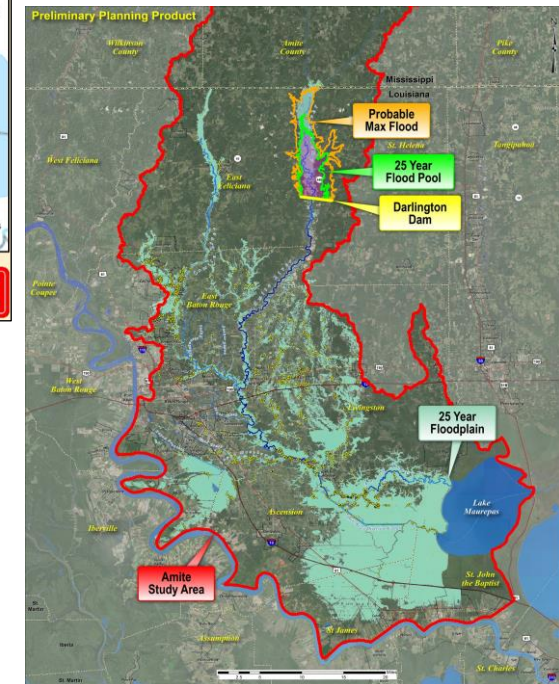
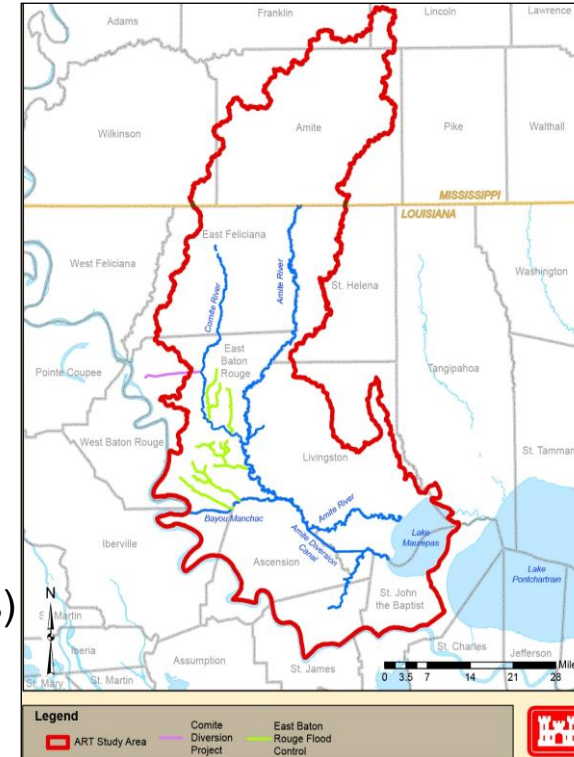


BUILDING STRONG®
and Taking Care of People!



AMITE RIVER AND TRIBUTARIES

- Project Description
 - Flood Risk Management study for the Amite River Basin
 - Non-Federal Sponsor: LA DOTD
- 2019 Tentatively Selected Plan (TSP)
 - Darlington Dry Dam with Nonstructural Measures
 - Estimated Project Cost \$2.3B; Benefit to Cost Ratio 1.2
- TSP Concerns
 - Constructability
 - Environmental Justice and Socioeconomic Impacts
- Exemption Request in process
 - Initial request focused on constructability (additional \$6M, 3.5 years)
 - Revised request focuses on environmental justice evaluations and public outreach as well as development of nonstructural only alternatives (additional \$1.91M, 28 months)
- Exemption request requires approval by the ASA(CW); all work stopped pending approval by ASA(CW) due to expiration of 3-year timeframe



BUILDING STRONG®
and Taking Care of People!

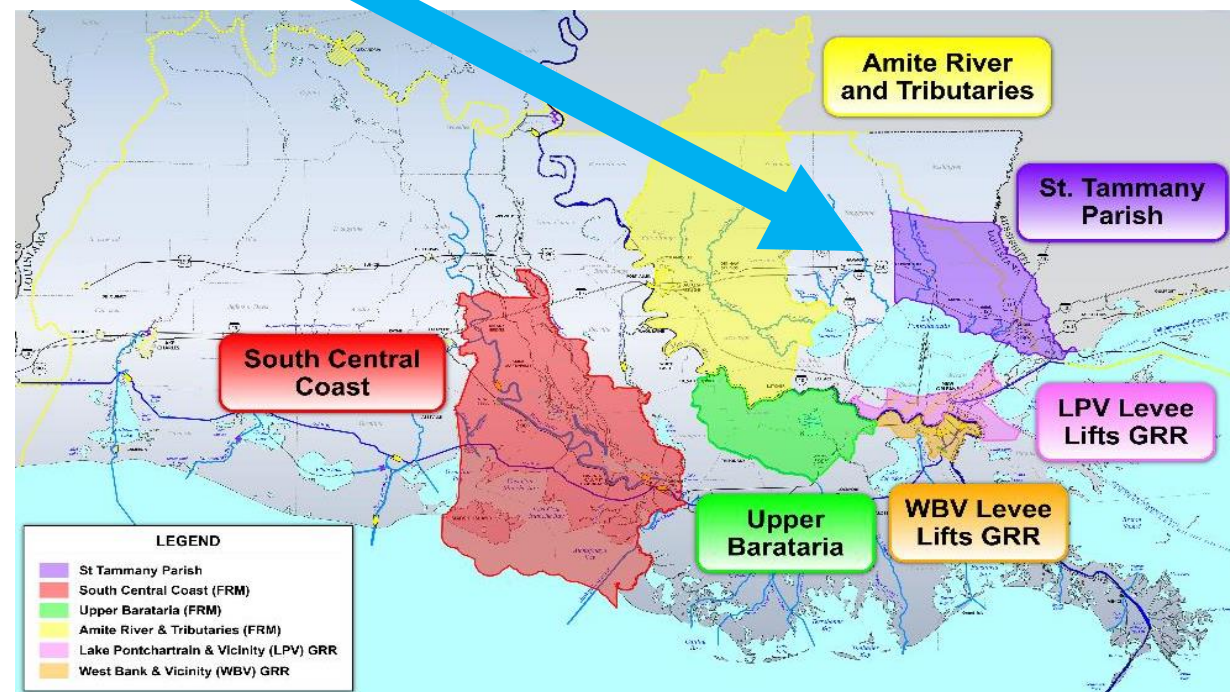


TANGIPAHOA PARISH

7



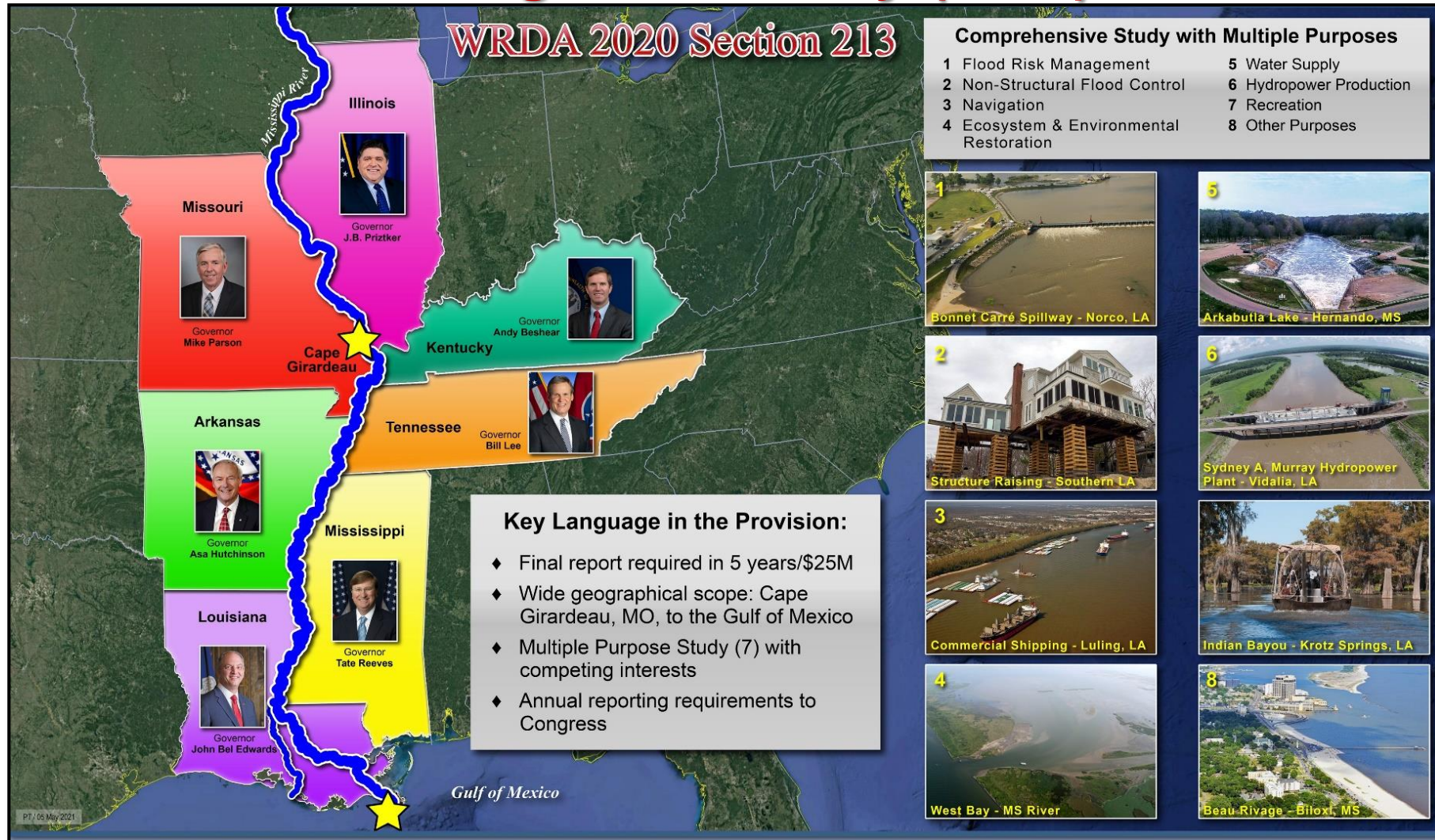
- Project Description
 - Flood Risk Management and Coastal Storm Risk Management for Tangipahoa Parish
 - Non-Federal Sponsor: CPRA
- New Start Study!
 - \$3.2M allocated through the Disaster Relief Supplemental Appropriations Act
 - Funds not yet received at MVN
 - Feasibility Cost Share Agreement Required



BUILDING STRONG®
and Taking Care of People!



Lower Mississippi River Comprehensive Management Study (LMR)



With implementation guidance directing cost sharing (possibly with seven states), strategic foresight will be required in developing the governance structure and overall scope of this this mega-study