

Louisiana's Adaptive Governance Initiative Update

CHARLES SUTCLIFFE



GOVERNOR'S
OFFICE OF
COASTAL
ACTIVITIES

Elements of a Resilient Coast

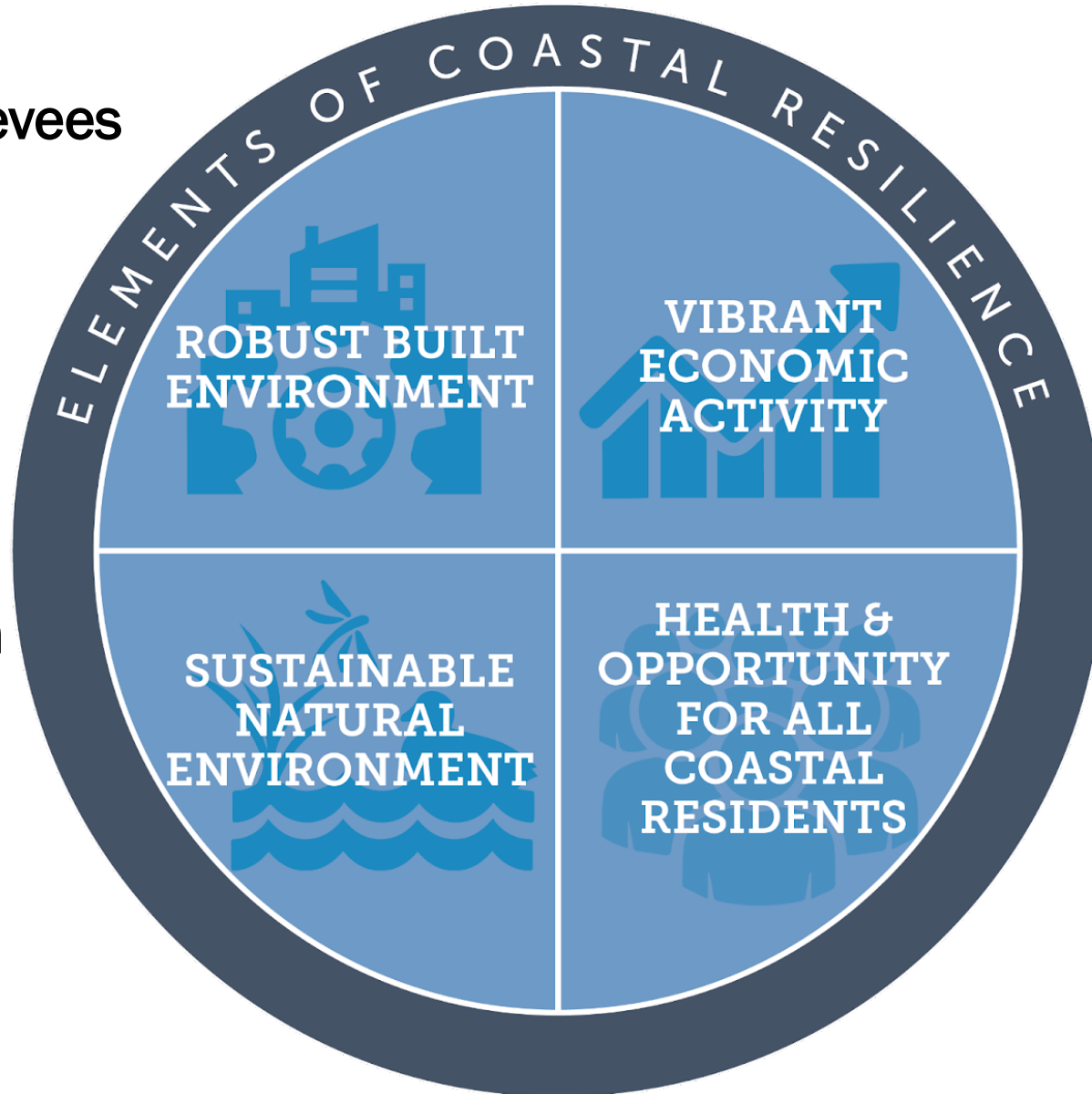
DOA, DOTD,
Housing,
Corrections...

Levees

Home Elevation, etc.

Restoration

DEQ, LDWF,
Coastal Zone
Management,
Conservation



Working Coast

NFIP, Insurance,
LED, LWC

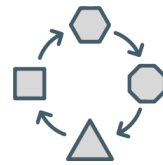
Health, Children
and Family
Services, Veterans
Affairs

Coastal Resilience Executive Order

- **Chief Resilience Officer**
- **Agency Resilience Coordinators**
- **Agency participation includes:**
 1. Assessing agency vulnerabilities
 2. Identifying adaptation actions
 3. Incorporating results into strategic plans



Assess agency
vulnerabilities



Develop adaptation
options



Institutionalize resilience

Resilience Coordinators

Agency	Resilience Coordinator
Agriculture & Forestry	Joey Breaux
Children and Family Services	Terri Ricks
Corrections	Rhett Covington
Culture, Recreation, & Tourism	Michael Ince
Division of Administration	Jacques Berry
Economic Development	Brad Lambert
Environmental Quality	Jonathan McFarland
GOHSEP	TBD
Health	Mark Thomas
Insurance	Warren Byrd
Natural Resources	Jason Lanclos
Revenue	Luke Morris
Transportation & Development	Patrick Landry
Veterans Affairs	Holly Talley
Wildlife and Fisheries	Ann Howard
Workforce Commission	Megan Warde

Vulnerability Insights

Facilities are at risk across all agencies

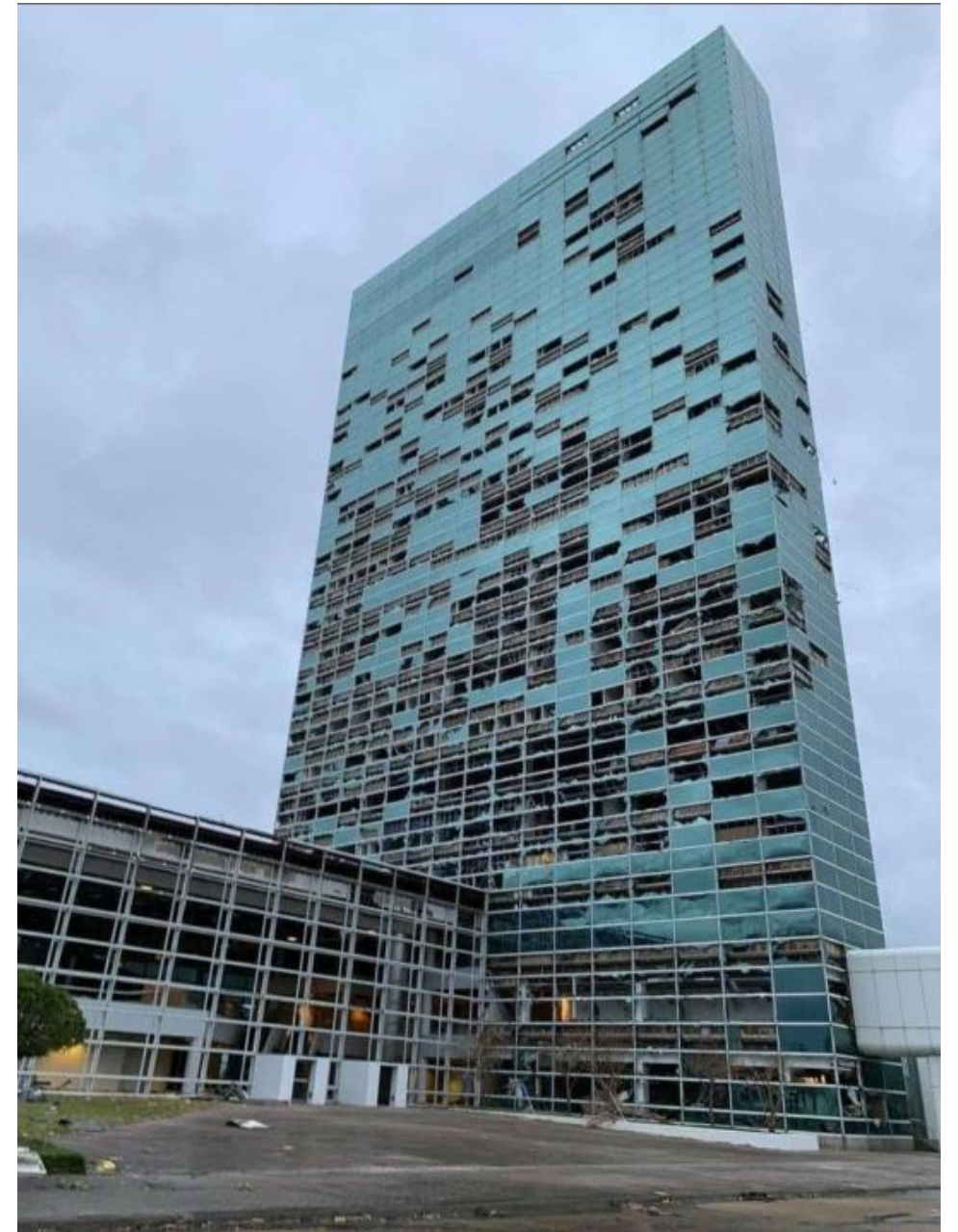
- Guidelines for new construction/remodels; existing facilities; leased space

Services and Program Side

- No access to services (health, disability, aging, veterans)
- Clients relocate temporarily or permanently

Workforce Exposure and Retention

- Impacts affect workforce too
- Harder to attract or maintain staffing



Deadline: Reporting and Institutionalizing

Agency Progress Report

C. Adaptation Strategies to Support Louisiana's Changing Coast

In the table below, list (in order of priority) the adaptation actions your agency has developed to address its identified coastal vulnerabilities.

Proposed Adaptation Action	Implementation			
	Timeline	Funding Sources	Partners	Potential Roadblocks

How might your agency navigate or remove the identified roadblocks?

August 2022 Deadline

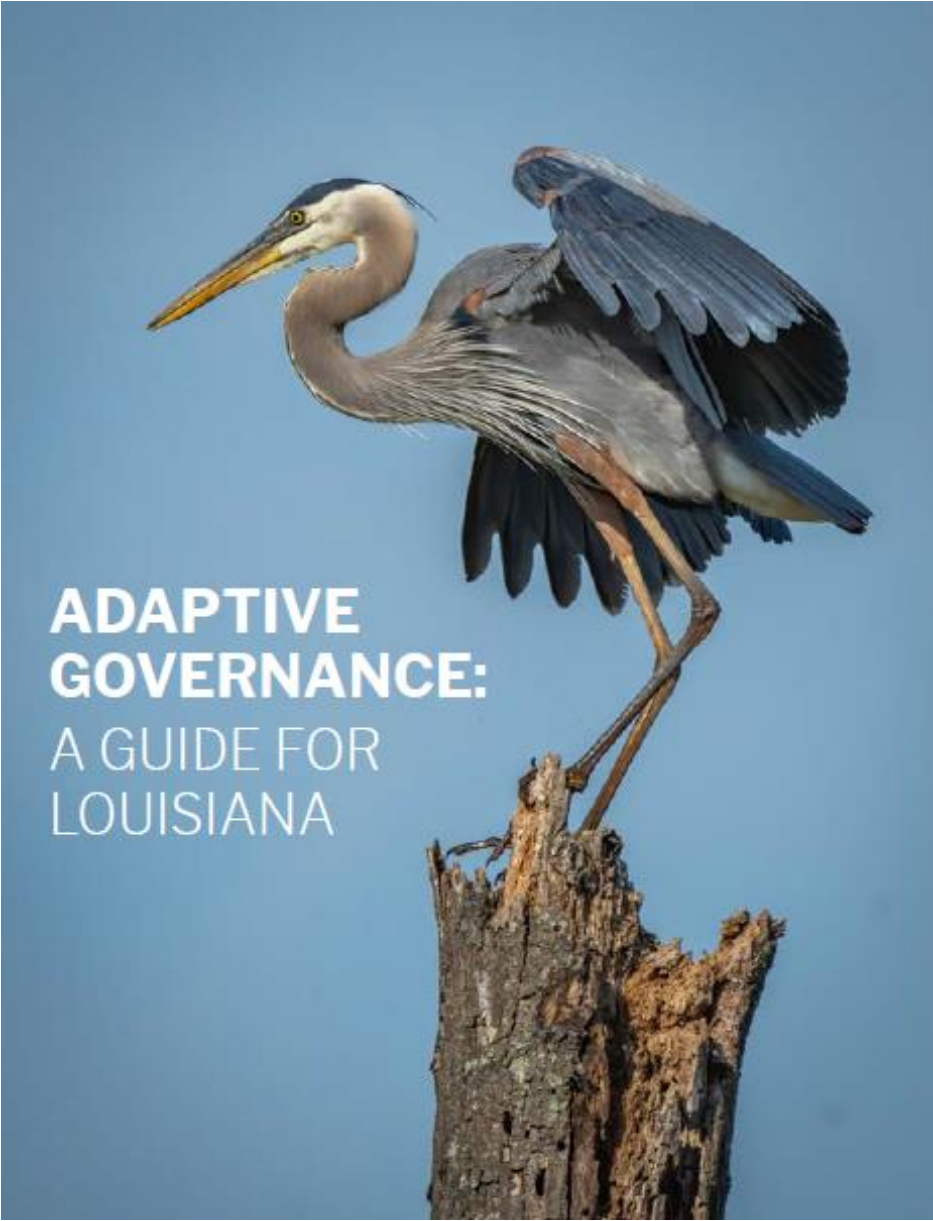
Summarize findings from Vulnerability Assessment

Draw attention to highest priorities

Describe adaptation responses and pathways

Create a narrative for why this is important to the agency and the state as a whole

Manual & Website



ADAPTIVE GOVERNANCE: A GUIDE FOR LOUISIANA

1

INTRODUCTION

BACKGROUND AND CONTEXT

Louisiana has lost 2,000 square miles of coastline since the 1930s and is in danger of losing an additional 4,000 square miles if significant action is not taken. This land loss increases the flood risk of coastal communities and presents many other challenges to communities and ecosystems. To address this problem, the state has developed the Comprehensive Master Plan for a Sustainable Coast, currently in its third edition, that analyzes the physical changes to the coast and contains a list of projects to reduce flood risk and restore the natural environment.

While the crisis on the coast is punctuated by singular disasters like hurricanes and oil spills, it also brings chronic stresses for the people, communities, natural resources, and economies of Louisiana. The impacts of coastal change continue to grow and will directly and indirectly test every state agency, making it crucial

to look beyond disaster preparation and response to find new ways to strengthen our ability to plan for the future in a way that meets those challenges.

The focus of this Manual, developed to support the implementation of Executive Order JBE 2019-19 and the Adaptive Governance Initiative, is on the Executive Branch of the Louisiana State Government. Although each agency in the Executive Branch has a distinct mission and its own expertise, resources, and responsibilities, each will be impacted and tested by the monumental changes occurring across Louisiana's coast. As each agency finds ways to adapt to these changes they are also helping to build a more resilient state by supporting stronger, more integrated, and informed programs and assets that meet different aspects of the changing needs of the populations living along the coast.



2

ESTABLISHING A FRAMEWORK

DEFINING COASTAL RESILIENCE IN LOUISIANA

The term resilience is widely understood to be multi-dimensional—including more than just enhancements to infrastructure. “Resilience” is the capacity of individuals, communities, and systems to survive, adapt, and grow no matter what kind of chronic stresses and acute shocks they experience.

The Framework is intended to guide agency leadership and staff as they make decisions about their existing and future operations on the coast. It prompts those who provide oversight or management of agency efforts with a series of questions to consider when analyzing opportunities to enhance their contribution to Louisiana's coastal resilience.

The Framework aids agencies as they develop vulnerability assessments, develop adaptation options and catalytic projects, and integrate the

identified adaptation options into their agency planning protocols. In addition to the “elements of coastal resilience,” this framework also includes “principles of adaptive governance” that focus on how to put resilience-thinking into action.

For instance, as the agency works through understanding the impacts of ongoing changes to the coast and how their assets and services are vulnerable to that change, they are asked to consider what information they need to make data-driven decisions; what kind of ripple effects anticipated coastal change will have; how impacted communities have expressed their thoughts and expectations about agency responses; and how coastal change will impact their available resources for response?



ADAPTIVE GOVERNANCE MANUAL

Timeline & Next Steps

Completing vulnerability assessments and reports on adaptation

- One-on-One engagement with resilience coordinators to support a July completion of activities

Continue Resilience Discussion

- Group engagement and meetings relating to federal agency adaptation and other topics (climate action plan, infrastructure bill, etc.)
- Consolidated Report of Vulnerabilities and Adaptations for State Leaders?

Advance Cross-Agency and Long-Term Recommendations to Build Resilience



GOVERNOR'S
OFFICE OF
COASTAL
ACTIVITIES

QUESTIONS?

Recommendations Overview

1. Integrate resilience criteria into Louisiana's **capital outlay** process
2. Develop a standard **post-disaster process** for reporting agency impacts, assessing agency response, and documenting lessons learned for future responses
3. Develop **multi-agency planning workshops** to understand the cross-agency impacts and opportunities related to large-scale CPRA investments
4. Adopt FEMA's **Enhanced State Hazard Mitigation Plan**
5. Develop a **coordinated electronic client management system** to make agency service provision more efficient both pre- and post-disaster

Recommendations Overview

6. Develop a shared risk data viewer that allows agencies to see their **assets mapped in relation to coastal change**
7. Enhance coordination between agencies to **leverage federal hazard mitigation funding opportunities** and advance projects and initiatives that contribute to a comprehensive vision for resilience
8. Expand **climate and resilience capacity** within the Governor's policy team
9. Develop a mechanism to include **vulnerable and impacted populations** in project design when investing in resilience
- 10. Forge partnerships** between agencies and universities, private sector entities, and/or non-profit organizations to deliver new insights into climate-related risks and advance adaptation actions