

CPRA Board Meeting

Status of:

**Mississippi River Ship Channel
Deepening Project and Beneficial
Use of Dredged Materials**

**Presentation by Brad Inman, Chief
Protection and Restoration Branch**

**New Orleans District
US Army Corps of Engineers**

Date: 16 June 2021



**US Army Corps of Engineers
BUILDING STRONG®**



Mississippi River Ship Channel(MRSC) Gulf to Baton Rouge Deepening Project



MRSC Deepening Project

Background:

- Since 1983 the Corps has had authority to dredge the Mississippi River to a depth of 55'.
- The Corps currently works to maintain a 45' channel for the navigation industry.
- With the expansion of the Panama Canal completed in June 2016 the locks can now allow the New Panamax ships with a 50' draft to pass.
- General Reevaluation Report and Supplement to the EIS was approved in a Chief's Report in Aug 2018 and the project received funding in 2020 to dredge SWP to a depth of 50'.

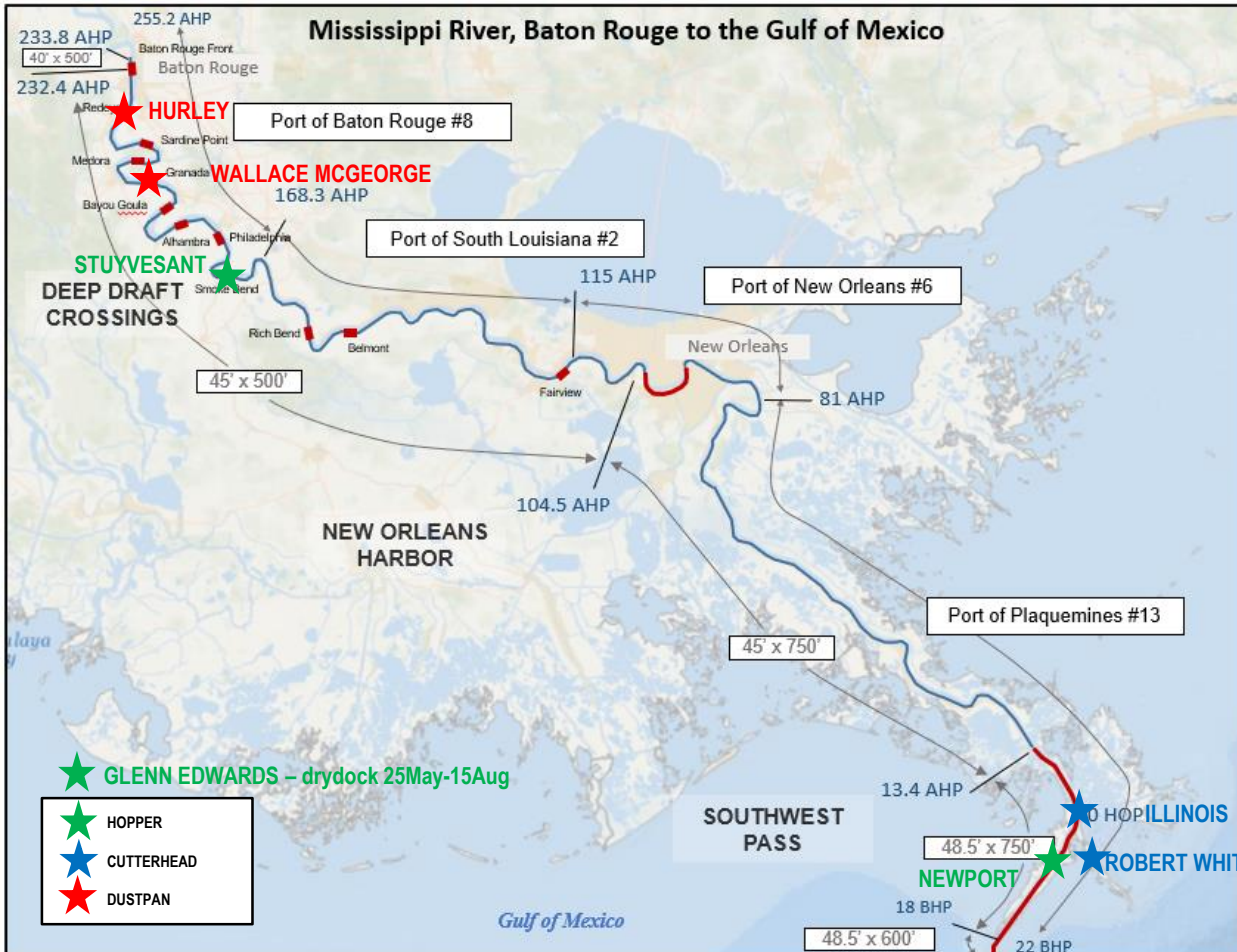


Mississippi River Ship Channel (MRSC) Gulf to Baton Rouge Deepening Project

- Total Project Cost for construction is estimated to be around \$246 Million.
- Funded in 2020 by Regional Dredge Demonstration Program to dredge the SWP portion of the project.
- Louisiana Department of Transportation and Development is the Non-Federal Sponsor. There is a 75/25 cost share. The U.S. Soy Transportation Coalition has contributed \$2 M to the project.
- Utility Relocations of pipelines and cable lines are a significant challenge. MVN 408 Engineering criteria requires a pipeline to be placed 25' below the theoretical section or 25' below the existing bed, whichever is greater. Utilities and DOTD typically share the cost of relocations 50/50.
- Once constructed USACE operates and maintains the new ship channel.



Mississippi River Status Update 7 June 2021



CHANNEL CONDITIONS:

❖ MAXIMUM RECOMMENDED DRAFT- BAR PILOTS 48 FT

DREDGE STATUS:

Hopper Dredge Disposal Area (HDDA): GLD&D, dredge Illinois started dredging on 27Jan21 & scheduled to depart on 15Jun21. Dredge Alaska will replace the Illinois on 20Jul21. EDC Aug21.

South Pass: Manson Construction, dredge Robert M White started dredging on 3Apr21. EDC Jan22.

Mississippi River & Southwest Pass:

MAINTENANCE:

- SWP Hopper Dredge #3-20: Manson Construction, dredge Glenn Edwards worked 7-24May21. Drydock 25May-15Aug. Return to MVN 15Aug. Temp release for SWG 15Oct21-1Jan22. EDC Feb-Mar22.
- SWP Hopper Dredge #6-20: Dutra Group, dredge Stuyvesant started dredging on 24Mar21. Moved to crossings on 24May21. EDC 13Jun21.
- SWP Hopper Dredge #7-20: Manson Construction, dredge Newport started dredging on 3Apr21. Scheduled to work in SWG Jun-Jul under MVN contract. EDC Aug-Oct21.
- Hopper Dredge Wheeler worked RE#1 25Apr-16May. RE#2: 15-28Jun21. RE#3: 13-19Jul21. RE#4: 20Aug21-15Sep21 in Calcasieu River.

50 ft DEEPENING:

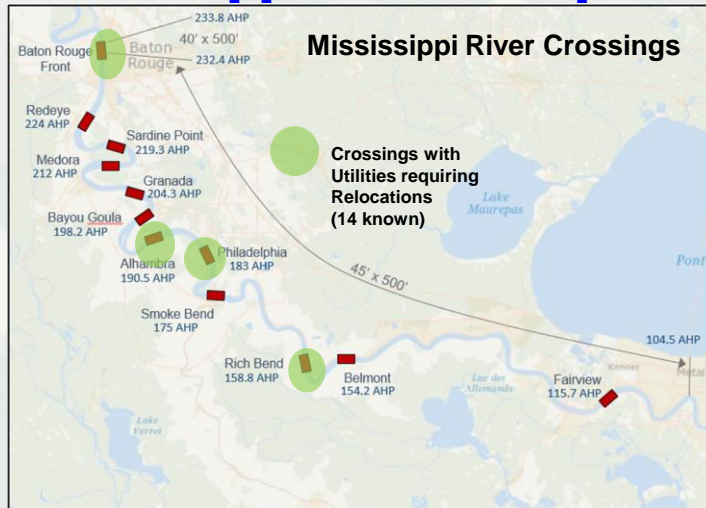
- Dredging completed 7May21. Awaiting utility pipeline verification mile 11-12AHP (Boardwalk/GulfSouth & Entergy).

Deep Draft Crossings:

- WALLACE MCGEORGE: 20May21 - TBD (Granada Mile 204 AHP)
- HURLEY: 26May21 - TBD (Redeye Mile 224 AHP)
- STUYVESANT: 25May-13Jun21 (Smoke Bend Mile 175 AHP)
- JADWIN: Scheduled to arrive on 26Jun21



C - Mississippi River Deepening



Project Status

- Deepening of Southwest Pass essentially complete to New Orleans depending upon utility depth of 2 pipelines and a cable around RM 11.5 AHP.
- MVN continues to support DOTD efforts to relocate utilities. Participate in meetings with Utility companies and DOTD. Providing guidance on 408 requirements. Regulatory intent is to use Nationwide Permit for relocations.
- MVN Relocations checking on utilities in an expanded dredging footprint confirming if additional utilities might need relocation.
- Dredges beginning maintenance work in the crossing areas.

Challenges

- Time required to relocate utilities, companies concerns about 408 requirements, permits, cost, etc.
- 14 known utility relocations needed to dredge to 50' (55' with advance) at Crossings (DOTD Lead)
- Availability of dredges to conduct work at crossings over the course of the dredging season at the crossings. Roughly coincides with low water river conditions.

Path Forward

- Confirm utility locations along modified crossing dredge areas and at RM 11.5 AHP.
- Continue to support DOTD and pipeline owners to facilitate relocations.
- Execute Crossings Contract Award by 31 July 2021.
- 15 June meeting scheduled to for MVN to meet with Coast Guard, Pilots, etc to discuss modifying channel alignments to better define potential dredging efforts.
- Plan is to deepen southern most crossings moving northward. Priority for utility relocation conformation.

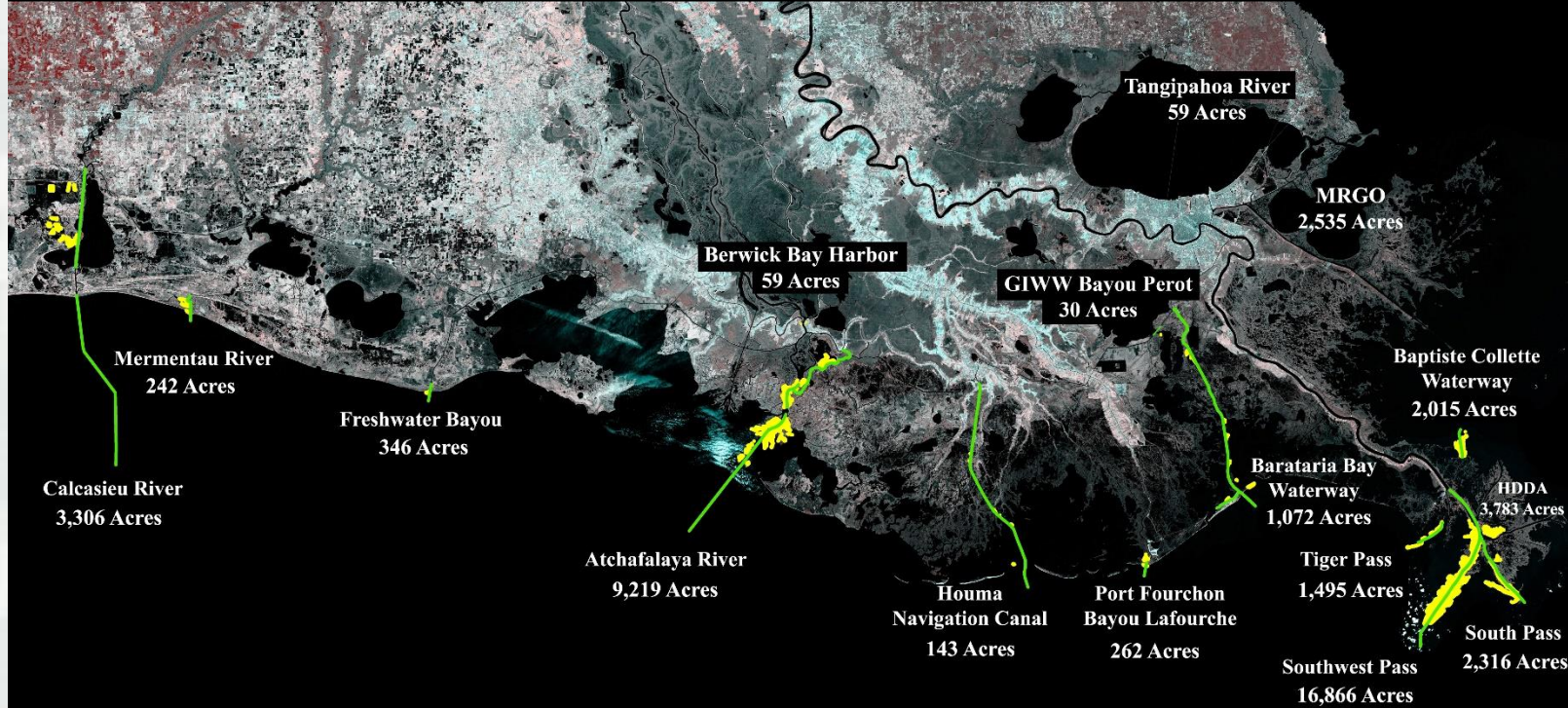




New Orleans District Beneficial Use of Dredged Materials



Louisiana Coast Beneficial Use Placement



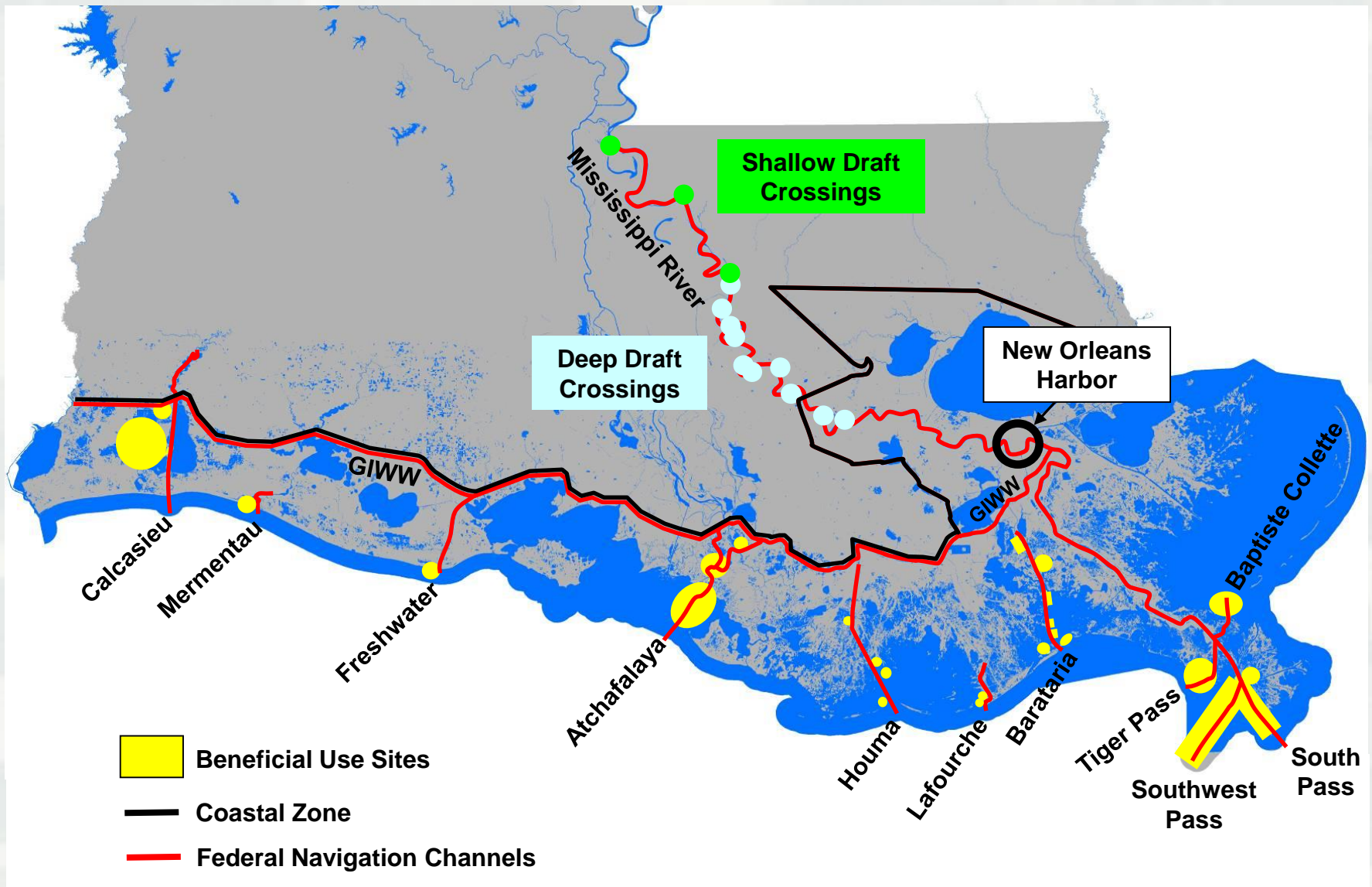
Total Cumulative Acres Created (1976-2018)
43,748 Acres
 (~68 square miles of land)

- Beneficial Use Placement
- Federal Authorized Navigation Channels

35,564 Acres - Marsh Habitat
4,261 Acres - Other Coastal Habitat
3,923 Acres - Miss River Delta Upland Habitat

Creff 11-25-19





Beneficial Use of Dredged Material

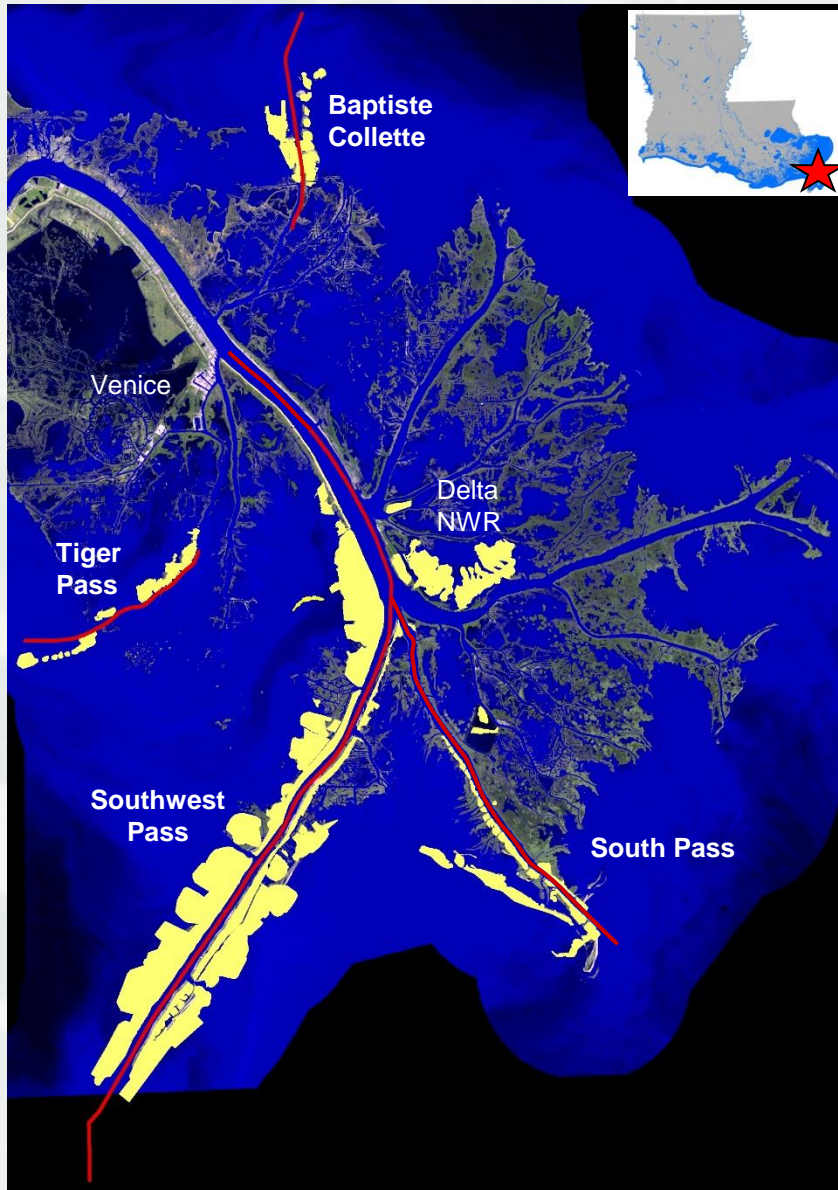


Beneficial Use beyond O&M

- USACE seeks all opportunities to maximize beneficial use of dredge material
- **The Federal Standard** is defined as the least costly, environmentally acceptable, and engineering sound disposal alternative
- If beneficial use costs are within the current Federal Standard, then beneficial placement is 100% Federal cost
- If beyond the current Federal Standard, other authorizations allow Non-Federal Sponsor to fund and/or cost share incremental costs
 - 100% NFS contribution, LCA BUDMAT, CWPPRA, Section 204, Section 1122 of WRDA 16, Other



Beneficial Use of Dredged Material



Lower Mississippi River

Coastal Habitat Acres Created


Southwest Pass – 20,649 Acres

South Pass – 2,316 Acres

Tiger Pass – 1,495 Acres

Baptiste Collette – 2,015 Acres

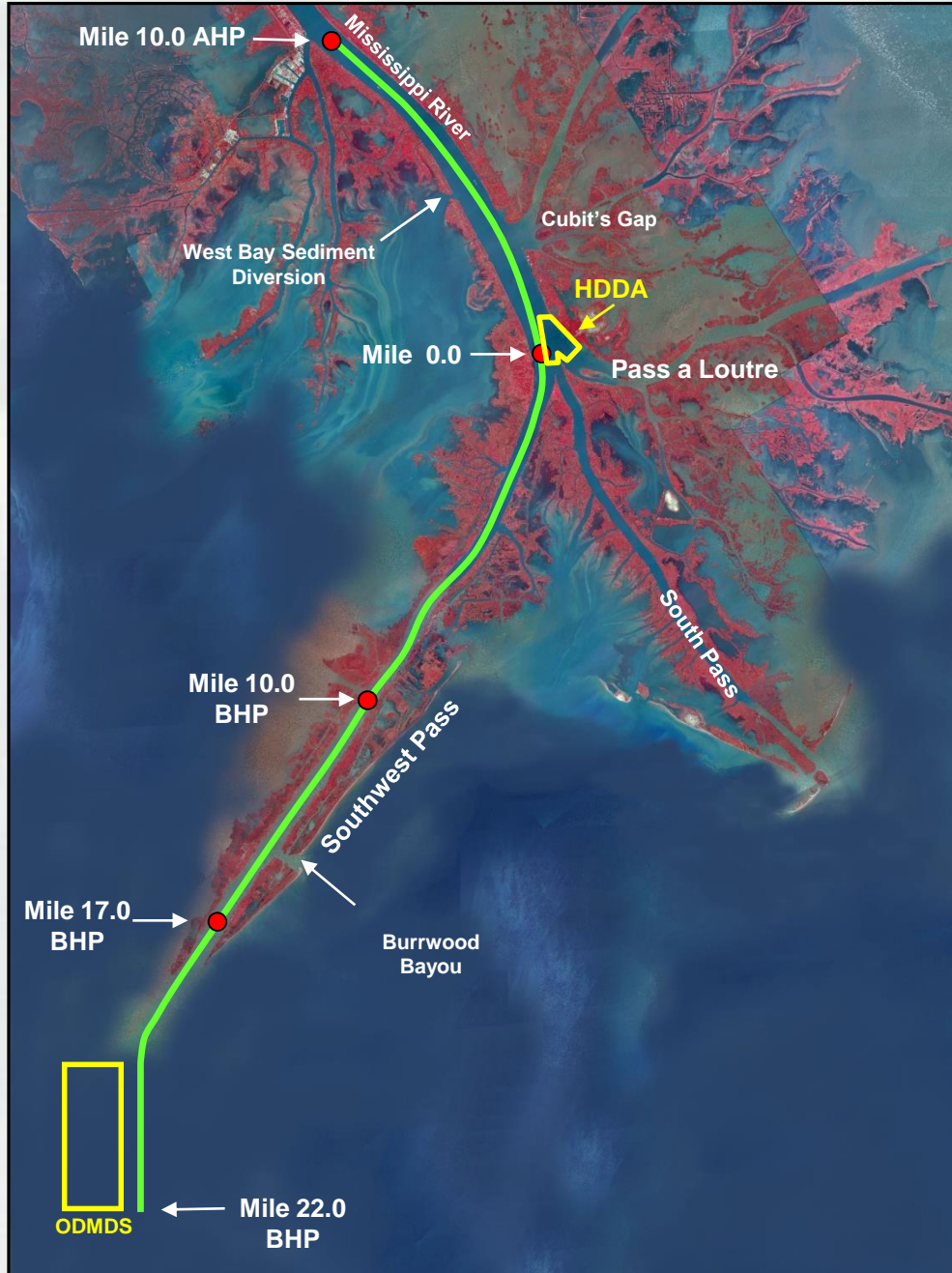
 **Navigation Channels**

 **Beneficial Use Sites**



SOUTHWEST PASS

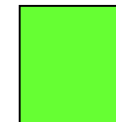
Mile 10.0 AHP to Mile 22.0 BHP



LEGEND



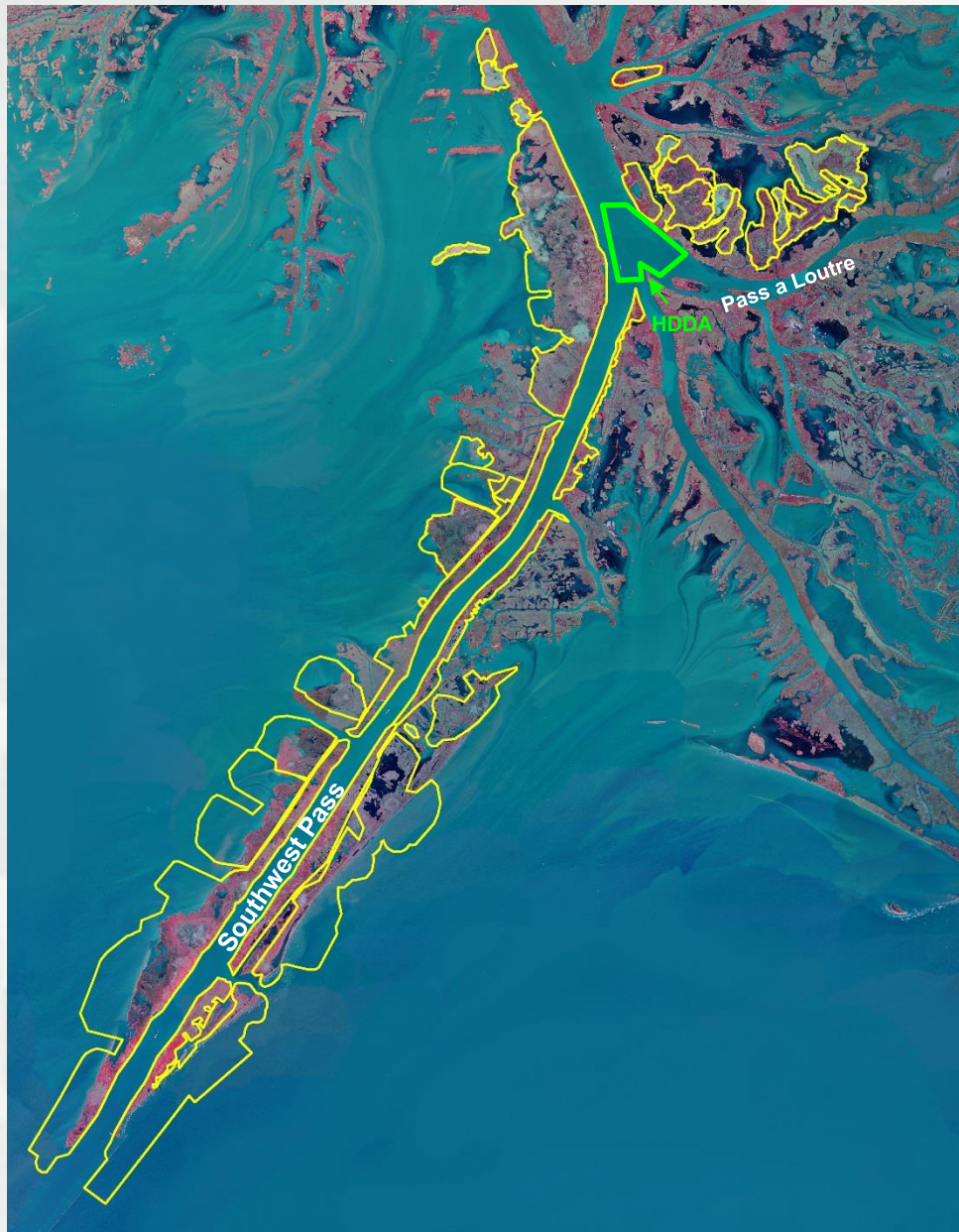
Open Water
Placement
Sites



Dredging
Reach



BUILDING STRONG®



Beneficial Use of Dredged Material

Mississippi River Southwest Pass

20,649 Acres



Beneficial Use of Dredged Material

Head of Passes Hopper Dredge Disposal Area (HDDA) BU Placement (1998-2018)

West Bay

FY 15 HDDA – 376 Acres

FY 15 LCA BUDMAT – 80 Acres

FY 17 HDDA – 226 Acres

Delta NWR

FY 98 – 197 Acres

FY 04 – 274 Acres

FY 07 – 332 Acres

FY 08 – 414 Acres

FY 10 – 403 Acres

FY 11 – 60 Acres

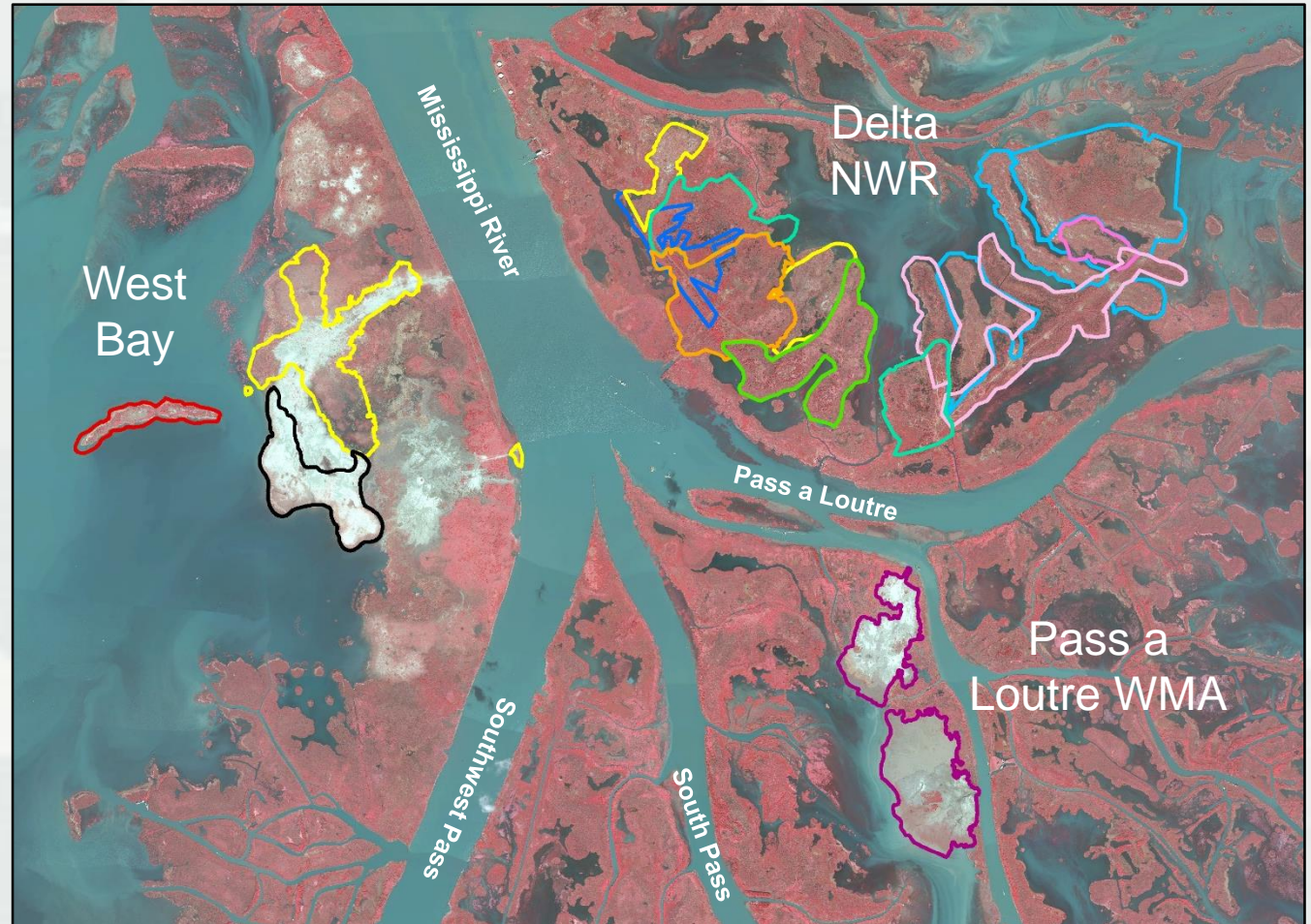
FY 13 – 644 Acres

FY 15 – 221 Acres

Pass a Loutre WMA

FY 17 N SAWDUST BEND – 178 Acres

FY 18 S SAWDUST BEND – 291 Acres



West Bay Total = 682 Acres

DNWR Total = 2,545 Acres

Pass a Loutre WMA Total = 469 Acres



Miss River

PAL

South
West Pass

South
Pass

Taken May 15, 2021
Contract# W912P8-20-C-0044
Patrick M. Quigley
www.gulfcoastairphoto.com
A SDAV owned small business.

GREAT LAKES DREDGE & DOCK COMPANY, LLC
Pass A'Loutre
Project
June 10th, 2021



BUILDING STRONG®



Taken May 15, 2021
Contract# W912P8-20-C-0044
Patrick M. Qulgley
www.gulfcoastairphoto.com
A SDAV owned small business.

Dredge Illinois

BUILDING STRONG®



Illinois and Fill Site in West Bay

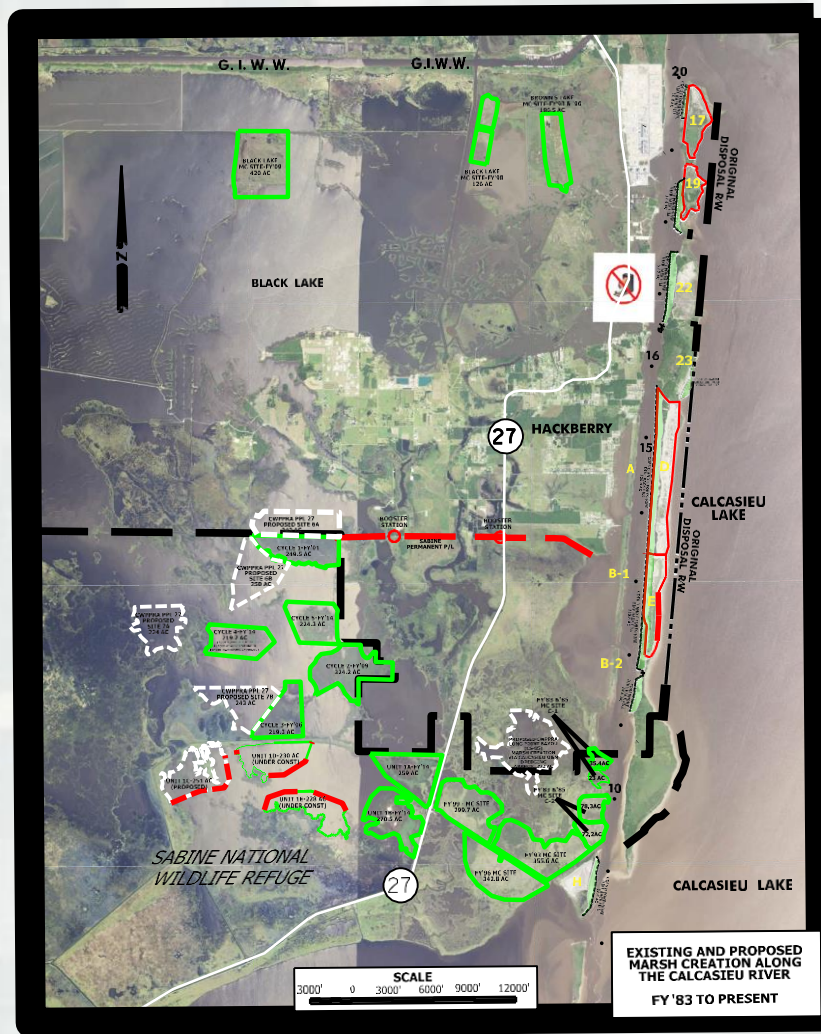


BUILDING STRONG®

LCA Beneficial Use of Dredged Material¹⁹ (BUDMAT) Program

- Implemented in coastal Louisiana for the beneficial use of material dredged from federally maintained waterways
- \$100 million program
- Cost shared with local sponsor - 75% Fed/25% Non-Fed
- Allows for placement of material beyond the Federal Standard
- Three projects constructed to date:
 - West Bay Diversion Receiving Area
 - Tiger Pass - Phase I
 - Calcasieu Sabine
- Three projects under study/design:
 - Tiger Pass - Phase II
 - Houma Navigation Canal
 - Barataria Waterway





Calcasieu River and Pass Beneficial Use

Projects have used CWPPRA, State, and LCA BUDMAT to pay for the costs above the federal standard to create thousands of acres of wetlands in the Sabine National Wildlife Refuge



LOUISIANA COASTAL AREA (LCA)
Beneficial Use of Dredged Material (BUDMAT)
@ Spanish Pass, Plaquemines Parish
(Tiger Pass 1)



STATUS

- Finished
- Dredge 1,650,000 cys at HDDA and transport approx. 12 miles north to Spanish Pass ridge.
- Construct a 500' wide marsh platform (55 acres) along the entire length of the ridge on its north side. to a height of +3.5' NAVD88.
- Construct approximately 5,000' long non-continuous ridge (23 acres) constructed to an elevation of +6.5' NAVD88 with a 200' wide base.

Constructed

- PPA executed for \$18.1M w/CPRAB and Plaquemines Parish Government
 - 75% Fed – 13.5M
 - 25% NFS – 4.5M
 - Expended - \$14.4M
- Close of project

28 Sep 18

As of 21 Sep
2018



BUILDING STRONG®

Can you see a Difference at the Head of Passes?

1985

2021



Questions