

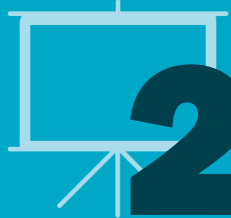
Mid-Barataria Sediment Diversion

DEIS/DRAFT RESTORATION PLAN
PROJECT UPDATE



MBSD Outreach & Engagement

OVER THE LAST 4 YEARS



232 MEETINGS



ELECTED & PARISH OFFICIALS



SEAFOOD INDUSTRY



RECREATION INDUSTRY



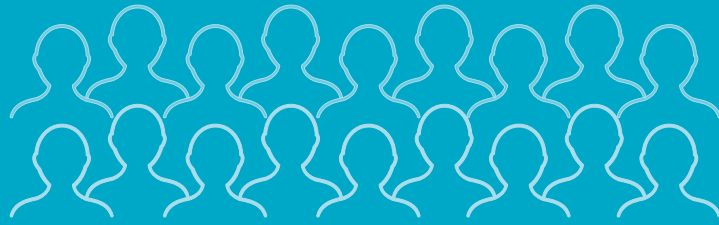
COMMUNITIES NEAR PROJECT SITES



NGO, NONPROFIT, AND STAKEHOLDER GROUPS



GENERAL PUBLIC



OVER

11,000

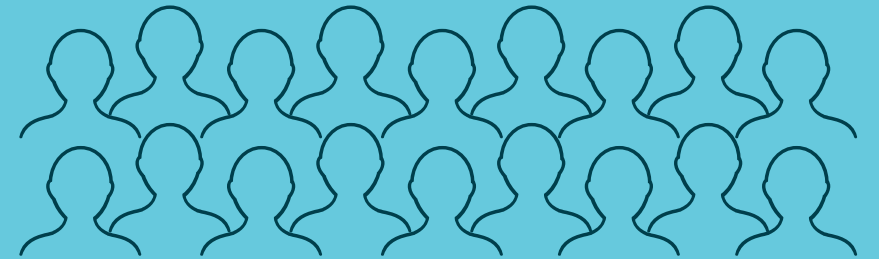
STAKEHOLDERS REACHED

CPRA Outreach & Engagement

DURING PUBLIC COMMENT PERIOD & DISCUSSING DEIS/DRP



72 MEETINGS & BRIEFINGS



19 HELD IN PLAQUEMINES PARISH



9 COMMUNITY OPEN HOUSES



6 VIRTUAL PUBLIC MEETINGS & WEBINARS

**SPECIFIC
OUTREACH TO ALL
STAKEHOLDER
GROUPS**

Public Input & Feedback

COASTAL LOUISIANANS OVERWHELMINGLY SUPPORT COASTAL RESTORATION

MAJOR PROPONENTS OF THE PROJECT FROM ALL COASTAL PARISHES

CONCERNS FOR VIABILITY OF OYSTER, SHRIMP AND CRAB INDUSTRIES; THE NEED TO CONSIDER ADDITIONAL MITIGATION

CONCERN FOR THE VIABILITY OF THE BARATARIA BASIN DOLPHIN POPULATION AND NEED TO REFINE POTENTIAL DOLPHIN IMPACT MINIMIZATION STRATEGIES

MITIGATION STRATEGIES NEED FURTHER DEFINING, COMMUNITIES REQUESTING CONTINUED OUTREACH



MBSD Mitigation Plan

- > INITIAL MEASURES INCLUDED IN DEIS & DRAFT RESTORATION PLAN AVAILABLE FOR PUBLIC COMMENT & REVIEW
- > WORKING WITH COMMUNITY RESIDENTS AND INDUSTRY TO REFINE MITIGATION MEASURES
- > SPECIFIC MEASURES/FINAL PROPOSED MITIGATION PLAN DEVELOPED BETWEEN DEIS AND FINAL EIS
- > MITIGATION MEASURES TO BE DEPLOYED BEFORE, DURING, AND AFTER PROJECT OPERATION



● OPPORTUNITY FOR PUBLIC INPUT