

Implementation Update

BREN HAASE, CPRA EXECUTIVE DIRECTOR



94 ACTIVE PROJECTS

PROJECT TYPE	33 CONSTRUCTION	52 E & D	9 PLANNING
Barrier Island/Headlands (3)	2	1	
Freshwater Diversion (1)		1	
Hurricane Protection (27)	14	7	6
Hydrologic Restoration (4)	1	3	
Marsh Creation (40)	8	30	2
Oyster Barrier Reef (1)		1	
Recreational Use (6)	6		
Sediment Diversion (3)		3	
Shoreline Protection (3)		3	
Other (6)	2	3	1

Construction Updates

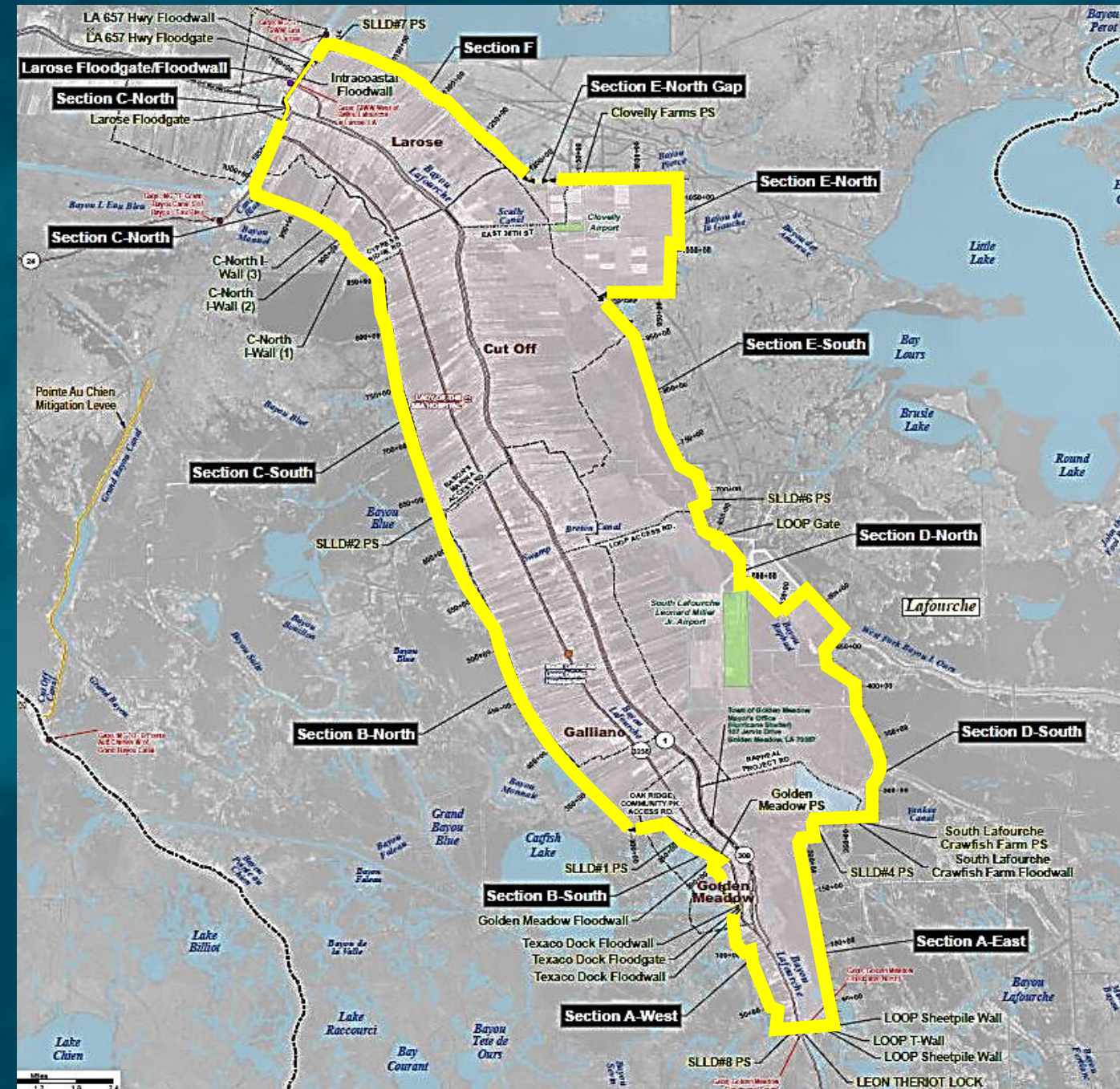
- **Larose to Golden Meadow Levee System**
- **Bayou Chene Permanent Barge Floodgate**
- **Morganza to the Gulf Levee System**
- **Northwest Turtle Bay Marsh Creation**

Larose to Golden Meadow

40+ total miles of levees and floodwalls in 19 unique levee sections

Including:

- 1 navigable floodgate
- 1 navigable lock
- 3 roadway floodgate
- 6 pump stations (SLLD)
- 3 public/private pump stations



Larose to Golden Meadow

RECENTLY COMPLETED:

- **Section E South (Elevation ~14')**
\$560,000 Surplus Funds

ONGOING CONSTRUCTION:

- **Section E North**
- **Crawfish Farm Floodwall**
- **Golden Meadow Pump Station Floodwall**
- **Section C North (raising to ~16')**
- **Section F Centerline (raising to minimum ~14')**
- **Section C South (raising to ~18')**



Larose to Golden Meadow: \$9.1 Million in Active Construction

Section E North

- \$1.5 Million (FY20 GOMESA)
- Length: ~3.1 Miles

Material excavation and stockpiling. SLLD to use in-house labor for shaping after contract completion.

Crawfish Farm Floodwall

- \$1.8 Million (FY20 GOMESA)
- Length: ~910 linear feet

Construction of A-Frame pile supports and sheetpile extension to elevation 18 feet

Golden Meadow Pump Station Floodwall

- \$1.5 Million (Surplus)
- Length: ~1,000 Linear Feet

Construction of A-Frame pile supports and sheetpile extension to elevation 18 feet

Section C North (raising to ~16')

- \$500,000 (SLLD)
- Length: ~2700 linear feet

Material excavation and stockpiling. SLLD to use in-house labor for shaping after contract completion.

Section F Centerline (raising to minimum ~14')

- \$2.3 Million (SLLD)
- Length: 4.5 Miles

Material hauling and levee shaping

Section C South (raising to ~18')

- \$1.5 Million
- Length: ~4 miles

Stockpiling of material and levee shaping.

Larose to Golden Meadow: FUTURE CONSTRUCTION

- **Section D South** (*remaining work*)
- **Section D North Ramp**
- **Converting Larose Floodgate to a Lock**
- **Larose Floodwall** (*new in FY22 Annual Plan*)
- **Section F Berm** (*new in FY22 Annual Plan*)

CONSTRUCTION UPDATE

MORGANZA TO THE GULF

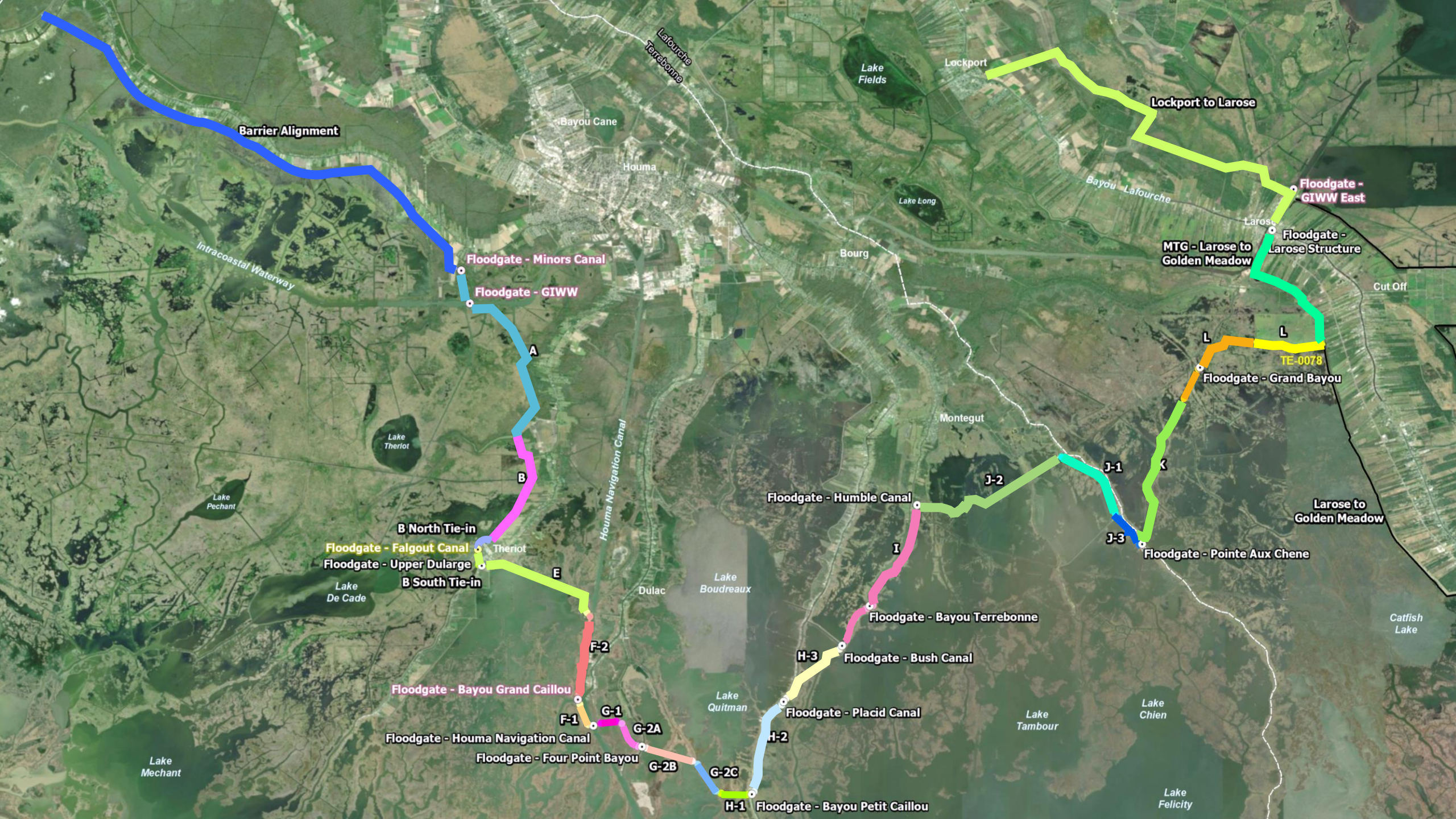


\$500 million Local and State funds

RESTORE Act Funding
for HNC Lock Complex

98 MILES of levees, T-walls, floodgates,
water control structures, pump stations





Barrier Alignment

Floodgate - Minors Canal

Floodgate - GIWW

A

B

B North Tie-in

Floodgate - Falgout Canal

Floodgate - Upper Dularge

B South Tie-in

E

F-2

Floodgate - Bayou Grand Caillou

F-1

Floodgate - Houma Navigation Canal

G-1

G-2A

Floodgate - Four Point Bayou

G-2B

G-2C

H-1

Floodgate - Bayou Petit Caillou

H-2

Floodgate - Placid Canal

H-3

Floodgate - Bush Canal

Floodgate - Bayou Terrebonne

I

Floodgate - Humble Canal

J-2

J-1

J-3

Floodgate - Pointe Aux Chene

K

L

Floodgate - Grand Bayou

L

TE-0078

MTG - Larose to Golden Meadow

Floodgate - Larose Structure

Floodgate - GIWW East

Lockport to Larose

Lockport

Lake Fields

Lake Long

Bourg

Montegut

Lake Boudreaux

Dulac

Lake Quitman

Lake Tambour

Lake Chien

Lake Felicity

Catfish Lake

Larose to Golden Meadow

Cut Off

Intracoastal Waterway

Lafourche Terrebonne

Bayou Lafourche

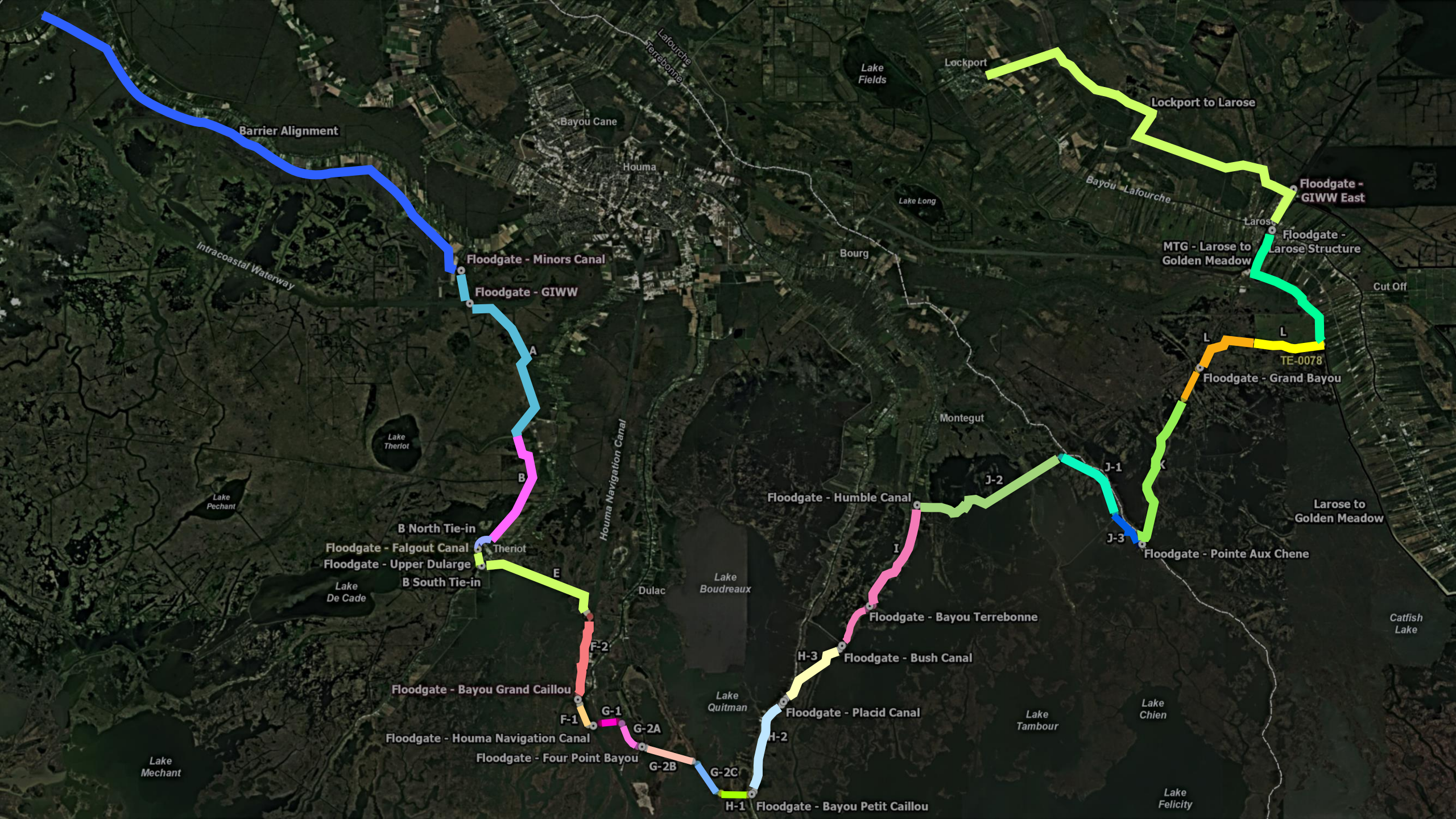
Bayou Cane

Houma

Lake Mechant

Lake Pechant

Lake Theriot



Barrier Alignment

Intracoastal Waterway

Bayou Cane

Houma

Lake Fields

Lockport

Lockport to Larose

Bayou Lafourche

Floodgate - GIWW East

Floodgate - Larose Structure

MTG - Larose to Golden Meadow

Cut Off

TE-0078

Floodgate - Grand Bayou

Montegut

Larose to Golden Meadow

Floodgate - Pointe Aux Chene

Lake Theriot

Lake Pechant

B North Tie-in

Floodgate - Falgout Canal

Floodgate - Upper Dularge

B South Tie-in

Lake De Cade

Houma Navigation Canal

Lake Boudreaux

Dulac

Floodgate - Humble Canal

J-2

J-1

J-3

Theriot

Floodgate - Bayou Terrebonne

H-3 Floodgate - Bush Canal

Floodgate - Bayou Grand Caillou

F-2

Floodgate - Houma Navigation Canal

F-1

G-2A

Floodgate - Four Point Bayou

G-2B

G-2C

H-2 Floodgate - Placid Canal

Lake Quitman

Lake Tambour

Lake Chien

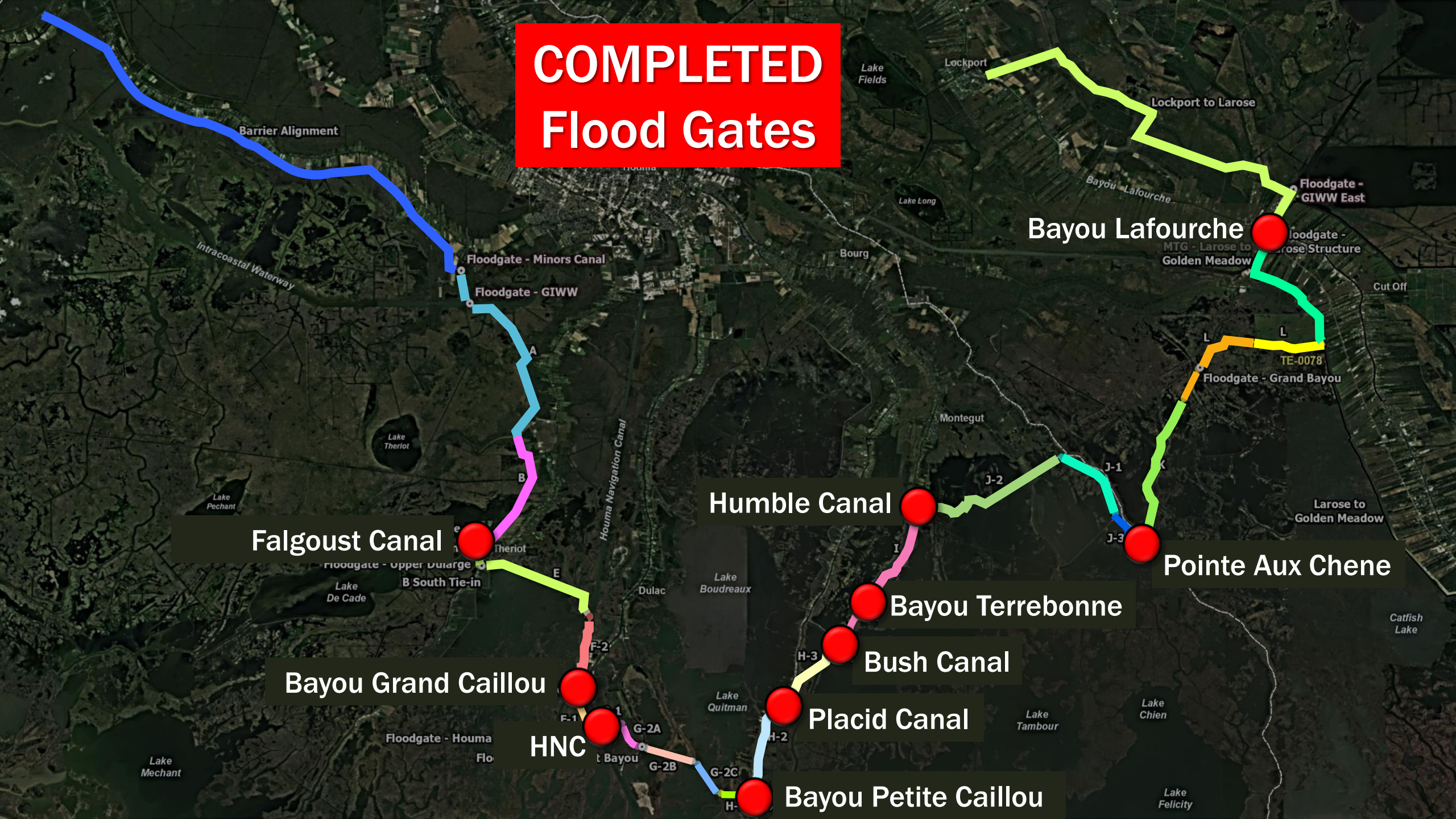
Lake Mechant

Catfish Lake

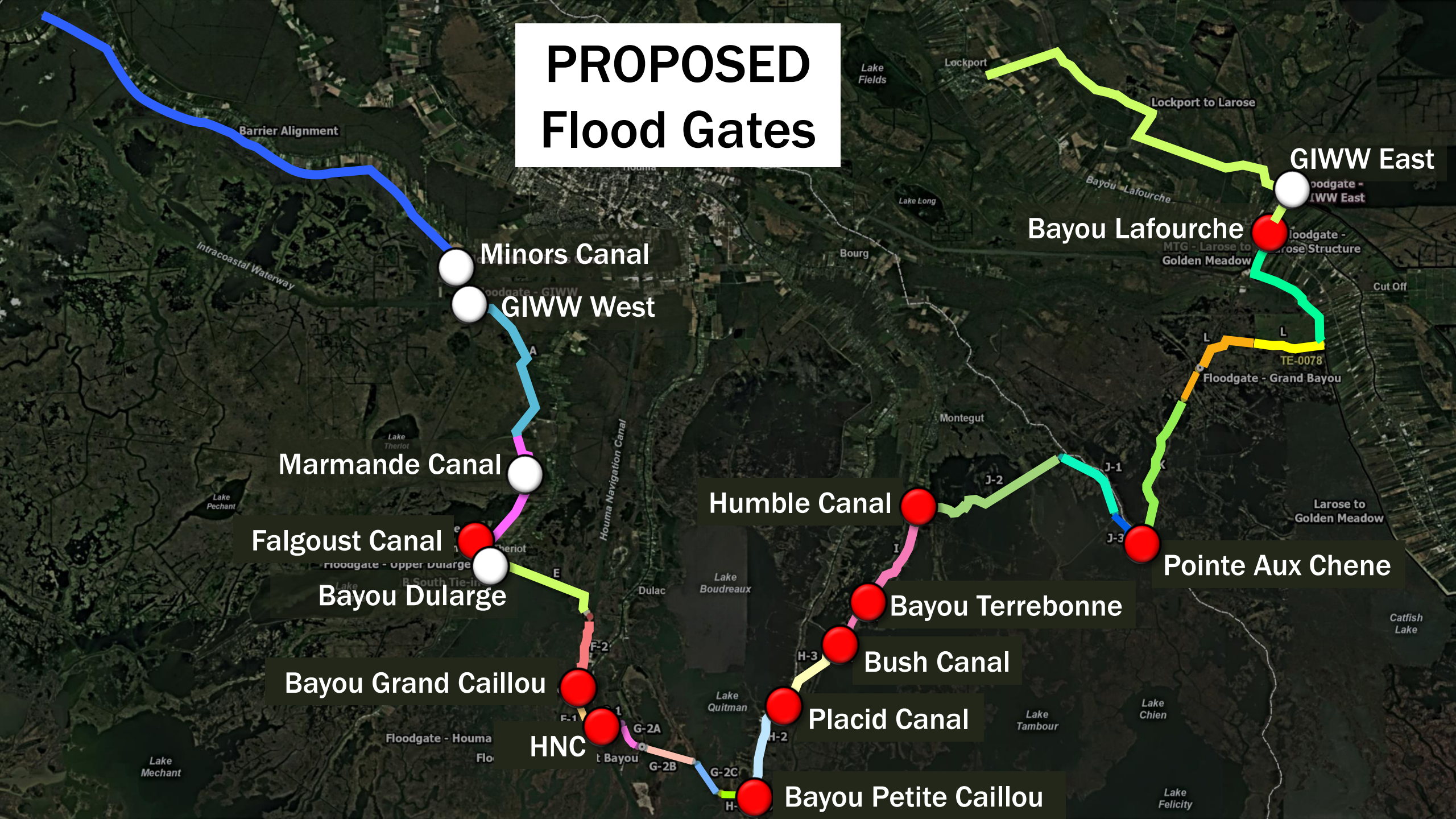
Lake Felicity

H-1 Floodgate - Bayou Petit Caillou

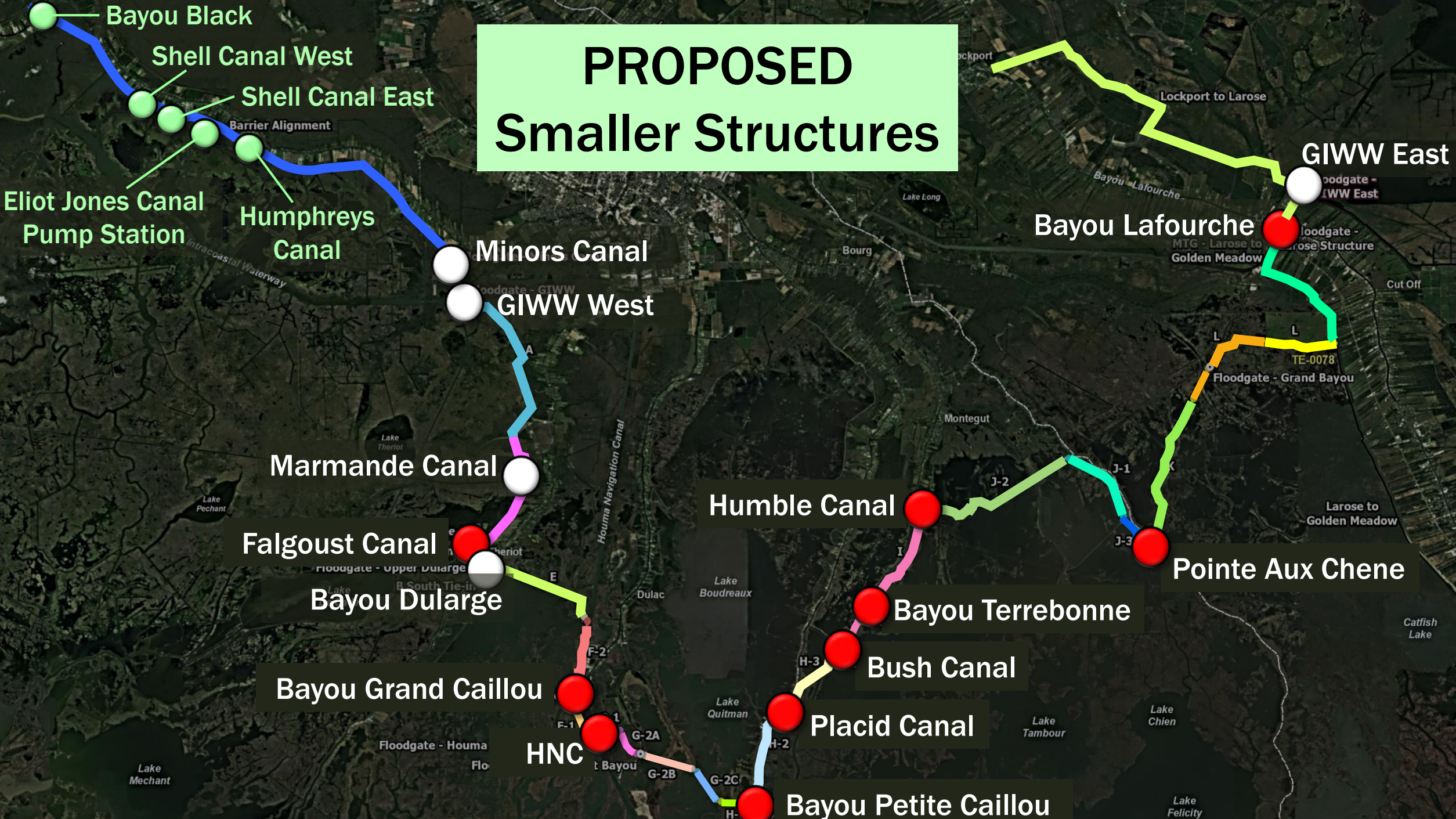
COMPLETED Flood Gates



PROPOSED Flood Gates



PROPOSED Smaller Structures



CONSTRUCTION UPDATE

Bayou Chene Permanent Barge Floodgate



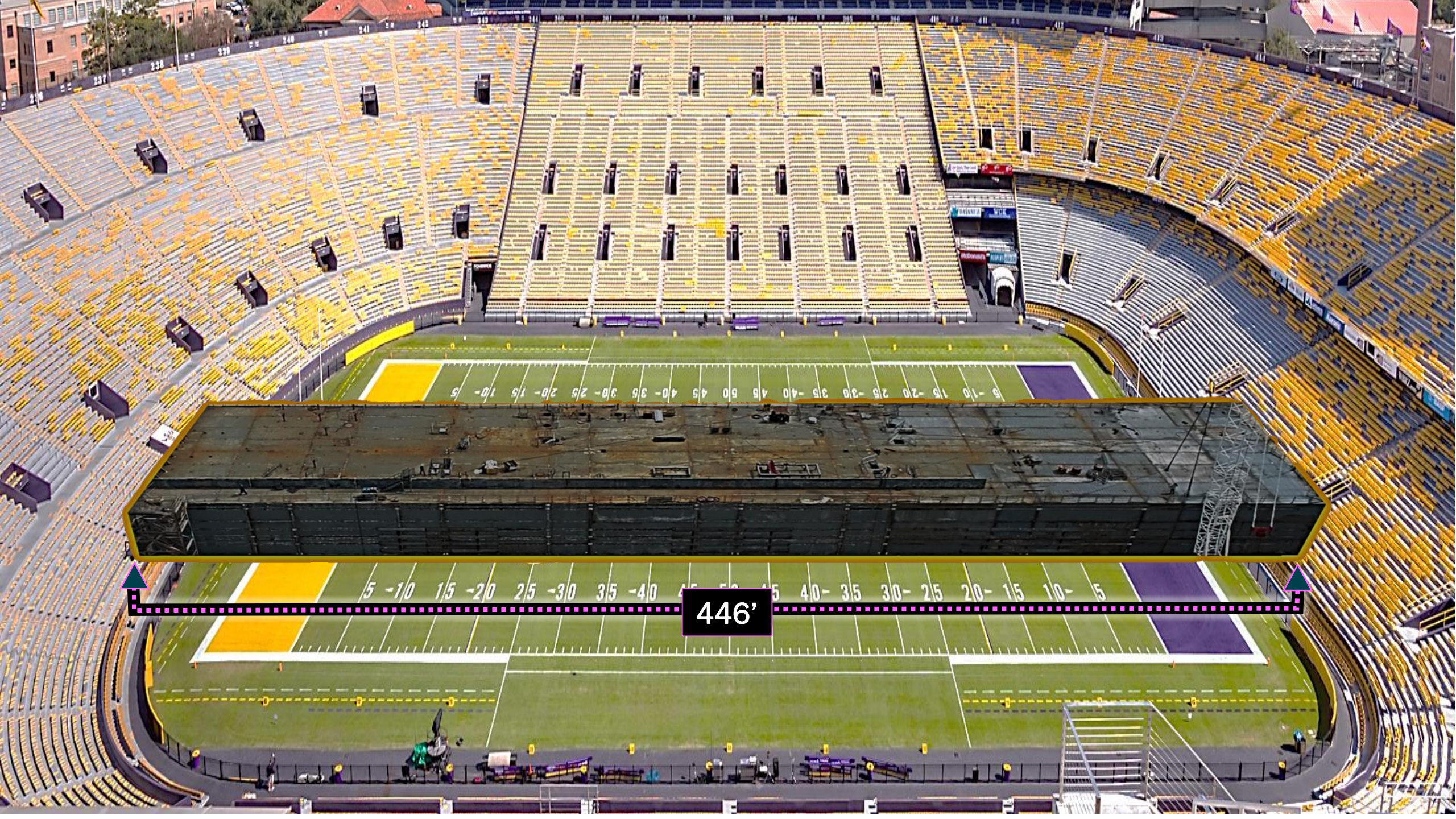
\$80 million in State Funding
St. Mary Levee District



2016







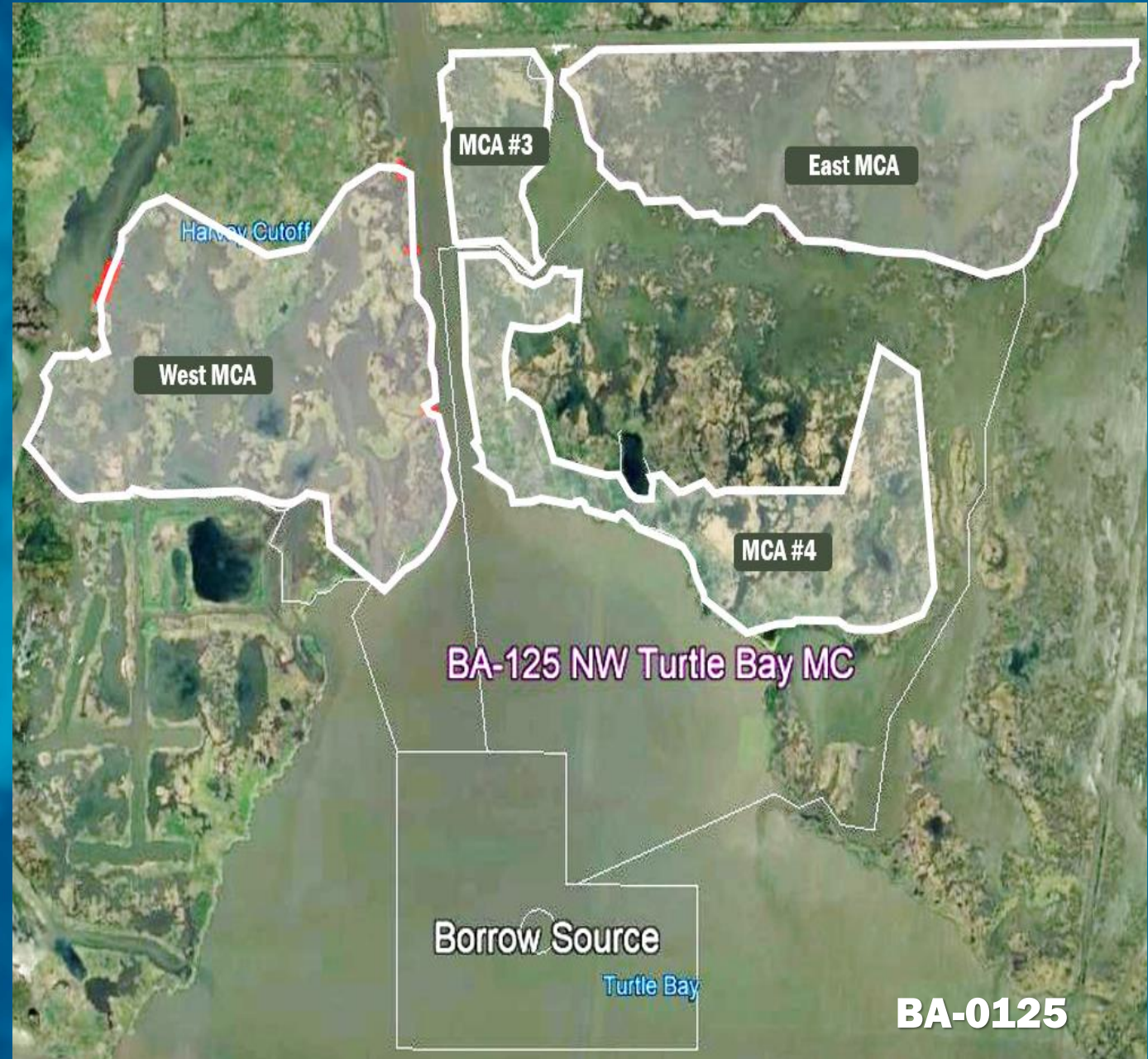
446'

CONSTRUCTION UPDATE

NORTHWEST TURTLE BAY MARSH CREATION & NOURISHMENT



623 acres of Marsh Creation
439 acres of Marsh Nourishment
Sediment dredged from Turtle Bay



CONSTRUCTION UPDATE

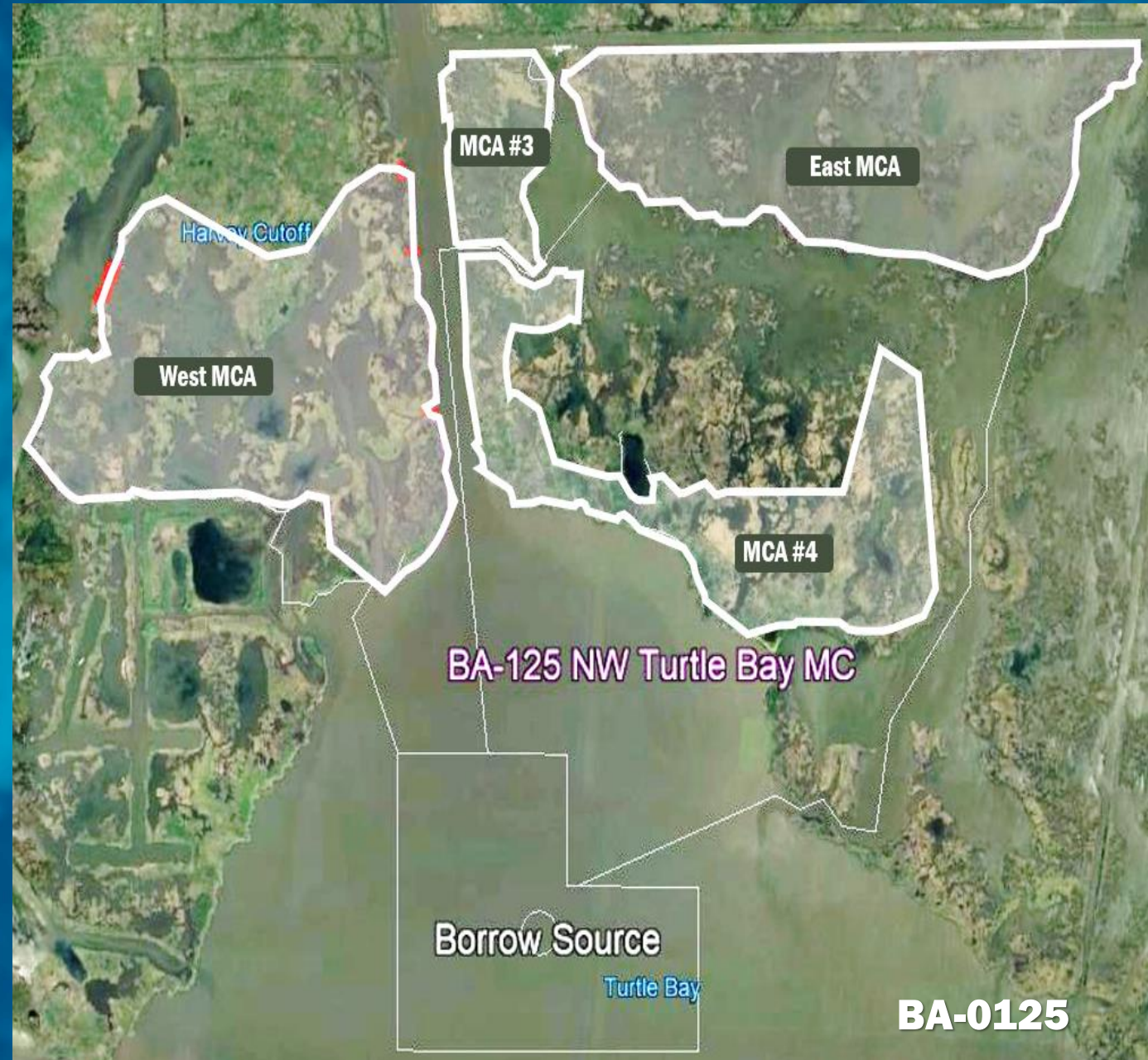
NORTHWEST TURTLE BAY MARSH CREATION & NOURISHMENT

Funding Source: CWPPRA

E&D Budget: \$ 2.35 Million

Construction Budget: \$31.31 Million

Bid Opening: January 2019



100 JOBS

Not Counting Government Workers

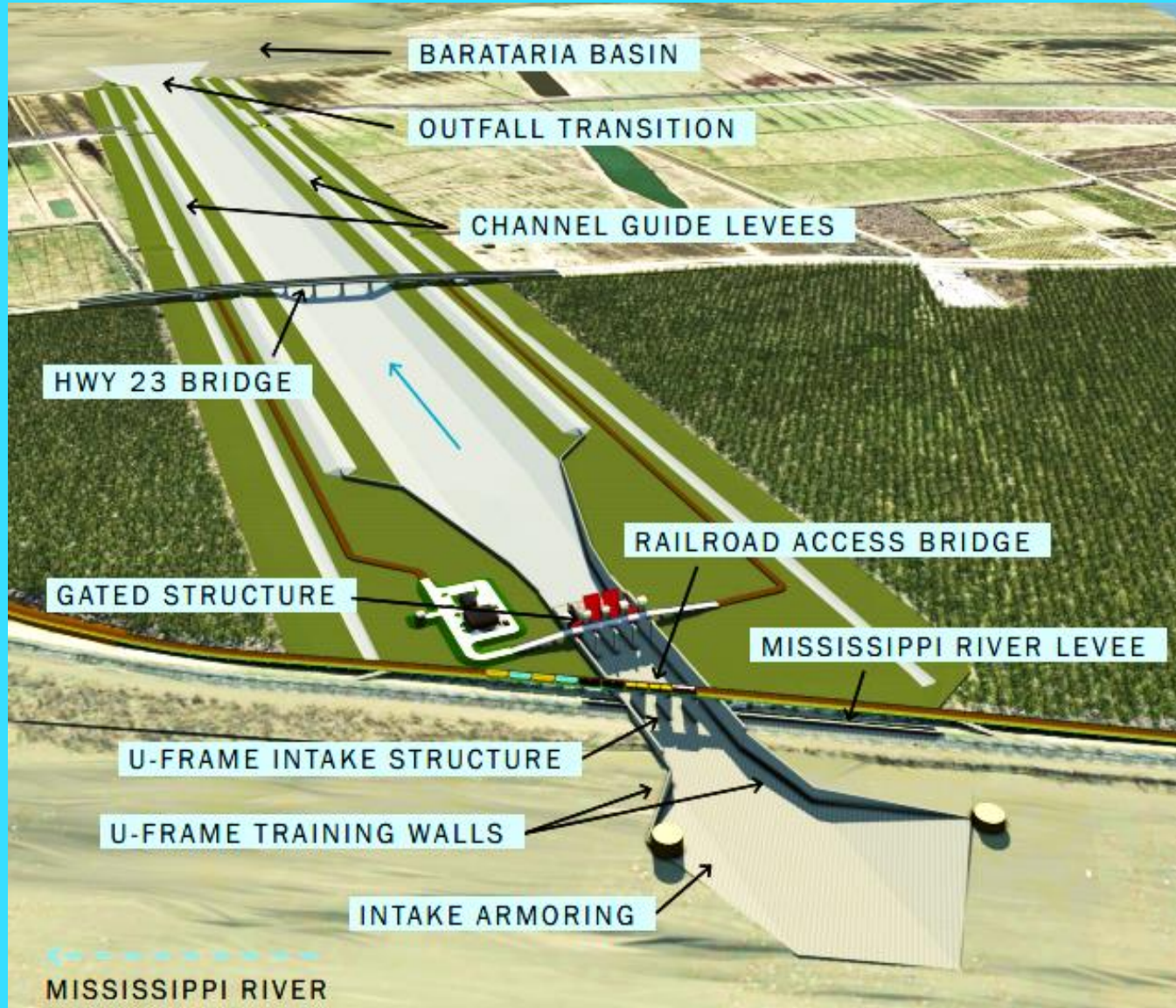
NORTHWEST TURTLE BAY MARSH CREATION & NOURISHMENT (BA-0125)



LOUISIANA CONNECTIONS



Mid-Barataria DEIS Public Comment Period



**Official Public
Comment Period
ends
June 3, 2021**

Online Comments to:
[ParkPlanning.NPS.GOV/MBSD](https://www.nps.gov/parkplanning/mbbsd)

Mid-Barataria DEIS Outreach & Engagement



51 MEETINGS

- 21 Elected & Parish Officials
- 8 Public Meetings: Communities, Homeowners
- 6 NGO, nonprofits
- 13 Media Briefings, interviews
- 2 Webinars

Meetings in Next 2 weeks:

- 2 Elected & Parish Officials
- 1 Public Meetings (Lafitte, May 20)
- 1 Webinar (May 25) 6 PM – 7 PM



Some Outreach Recipients

NY TIMES
ASSOCIATED PRESS
STATE REP. RYAN BOURRIAQUE
STATE REP. BILL BUBRIG
STATE REP. MACK CORMIER
STATE SEN. PAT CONNICK
U.S. SEN. JOHN KENNEDY STAFF
STATE REP. VINCENT PIERRE
STATE SEN. RICK WARD
SPEAKER OF THE HOUSE, REP. CLAY SCHEXNAYDER
SENATE PRESIDENT, SEN. PAGE CORTEZ
THE ADVOCATE NEWSPAPER
SCIENCE MAGAZINE
PRESIDENT GUY MCGINNIS ST. BERNARD PARISH
JOHN LANE, ST. BERNARD PARISH GOVERNMENT
STAFF, U.S. HOUSE NATURAL RESOURCES COMMITTEE
WRKF RADIO, JIM ENGSTER
RESTORE THE MISS. RIVER DELTA COMMISSION
BRIAN HALDANE, TALK 107.3 RADIO
STATE REP. RAY GAROFALO
WWL RADIO - TOMMY TUCKER
WWL RADIO - NEWELL NORMAND
GNO INC.
MICHAEL HECHT, GNO INC.

WAFB TV 9 BATON ROUGE
WEST BANK BUSINESS & INDUSTRY ASSOCIATION
MYRTLE GROVE HOMEOWNERS ASSOCIATION
PLAQUEMINES PARISH COUNCIL MEETING
LAFITTE MAYOR TIM KERNER
STATE REP. TIM KERNER
MYRTLE GROVE HOMEOWNERS ASSOCIATION
GOVERNOR'S ADVISORY COMMISSION
STATE OF MISSISSIPPI - STAFF BRIEFING
LA. SENATE NATURAL RESOURCES COMMITTEE
WOODPARK COMMUNITY
MISSISSIPPI RIVER COMMISSION
HAPPY JACK COMMUNITY
BENNY ROUSSELL, PLAQUEMINES PARISH COUNCIL
LAKE HERMITAGE COMMUNITY
SUZIE BAYOU COMMUNITY
DEER RANGE COMMUNITY
LOUISIANA SEA GRANT
CHRISTIAN SCIENCE MONITOR
SEAFOOD PROMOTION BOARD
JEFFERSON PARISH COUNCIL MEMBERS
LOUISIANA PUBLIC BROADCASTING
GRAND ISLE TOWN COUNCIL
NOW THIS MEDIA
COREY ARBOURGH, PLAQUEMINES PARISH COUNCIL

Mid-Barataria DEIS Outreach & Engagement



**Info on May 25th Webinar at
coastal.la.gov/calendar**

**Official Online Comments:
[ParkPlanning.NPS.GOV/MBSD](https://www.nps.gov/mbbsd)
ENDS: June 3, 2021**

CONNECT WITH US!



@LouisianaCPRA

