

Implementation Update

BREN HAASE, CPRA EXECUTIVE DIRECTOR



93 ACTIVE PROJECTS

PROJECT TYPE	33 CONSTRUCTION	51 E & D	9 PLANNING
Barrier Island/Headlands (4)	3	1	
Freshwater Diversion (1)		1	
Hurricane Protection (27)	13	8	6
Hydrologic Restoration (3)	1	2	
Marsh Creation (40)	8	30	2
Oyster Barrier Reef (1)		1	
Recreational Use (6)	6		
Sediment Diversion (3)		3	
Shoreline Protection (2)		2	
Other (6)	2	3	1

~~96~~ ACTIVE PROJECTS

93 ACTIVE PROJECTS

CONSTRUCTION

~~34~~ 33

E & D

~~52~~ 51

PLANNING

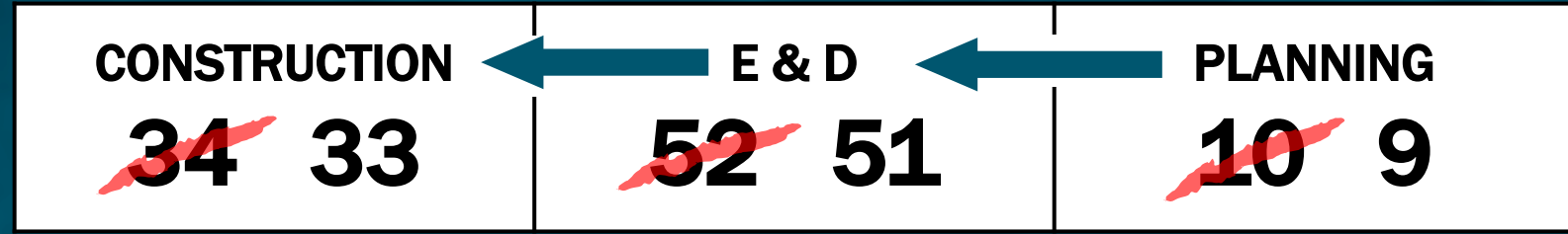
~~10~~ 9

Why have the numbers decreased?

Are we slowing down?

~~96~~ ACTIVE PROJECTS

93 ACTIVE PROJECTS



6 Projects
Completed
Construction

3 HURRICANE PROTECTION PROJECTS **COMPLETED**

- ❖ Des Allemands Pump Station Rehabilitation Project
- ❖ Storm Surge Risk Reduction for US-90 at Bayou Folse
- ❖ LaCache Pump Station

2 SHORELINE PROJECTS **COMPLETED**

- ❖ Grand Isle and Vicinity Breakwater
- ❖ Rockefeller Shoreline Project

1 RECREATIONAL USE PROJECT **COMPLETED**

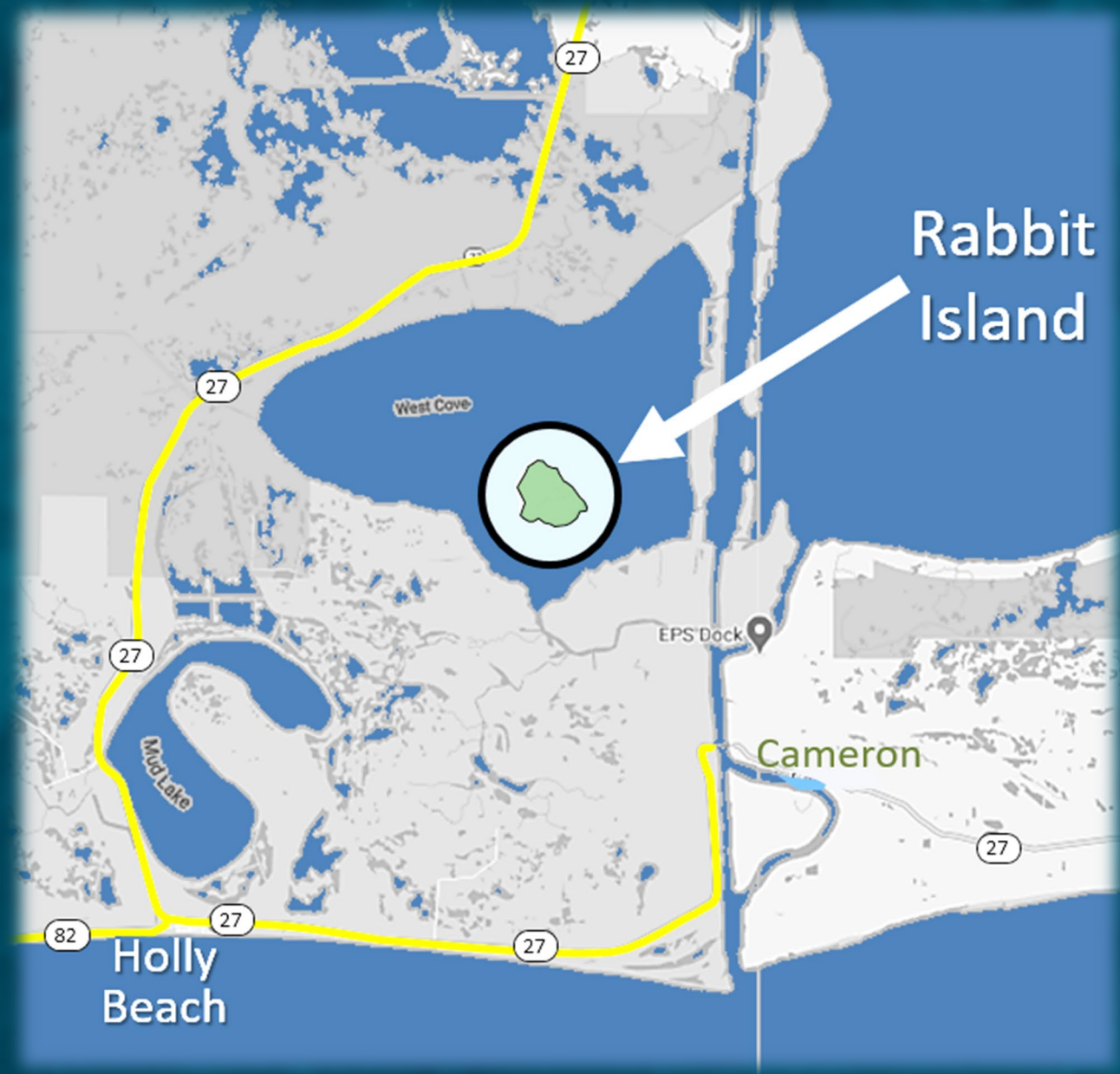
- ❖ Atchafalaya Delta WMA Boat Access Project

CONSTRUCTION UPDATE

RABBIT ISLAND RESTORATION PROJECT



133 Acres of Marsh Created/Nourished
Calcasieu Ship Channel Borrow Source



CONSTRUCTION UPDATE

RABBIT ISLAND RESTORATION PROJECT

Southwest Louisiana's only nesting colony
for our State Bird, the Brown Pelican

Funding Source: NRDA / LA TIG

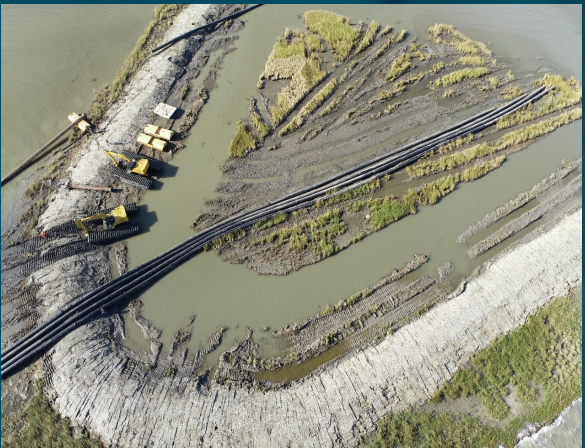
E&D Budget: \$ 3 Million

Construction Budget: \$ 9 Million



130 JOBS

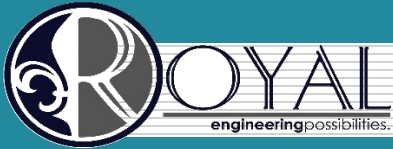
Not Counting Government Workers



**RABBIT ISLAND
RESTORATION PROJECT**
(CS-0080)



LOUISIANA CONNECTIONS



R. G. Ford Consulting Company



R. CHRISTOPHER GOODWIN & ASSOCIATES, INC.

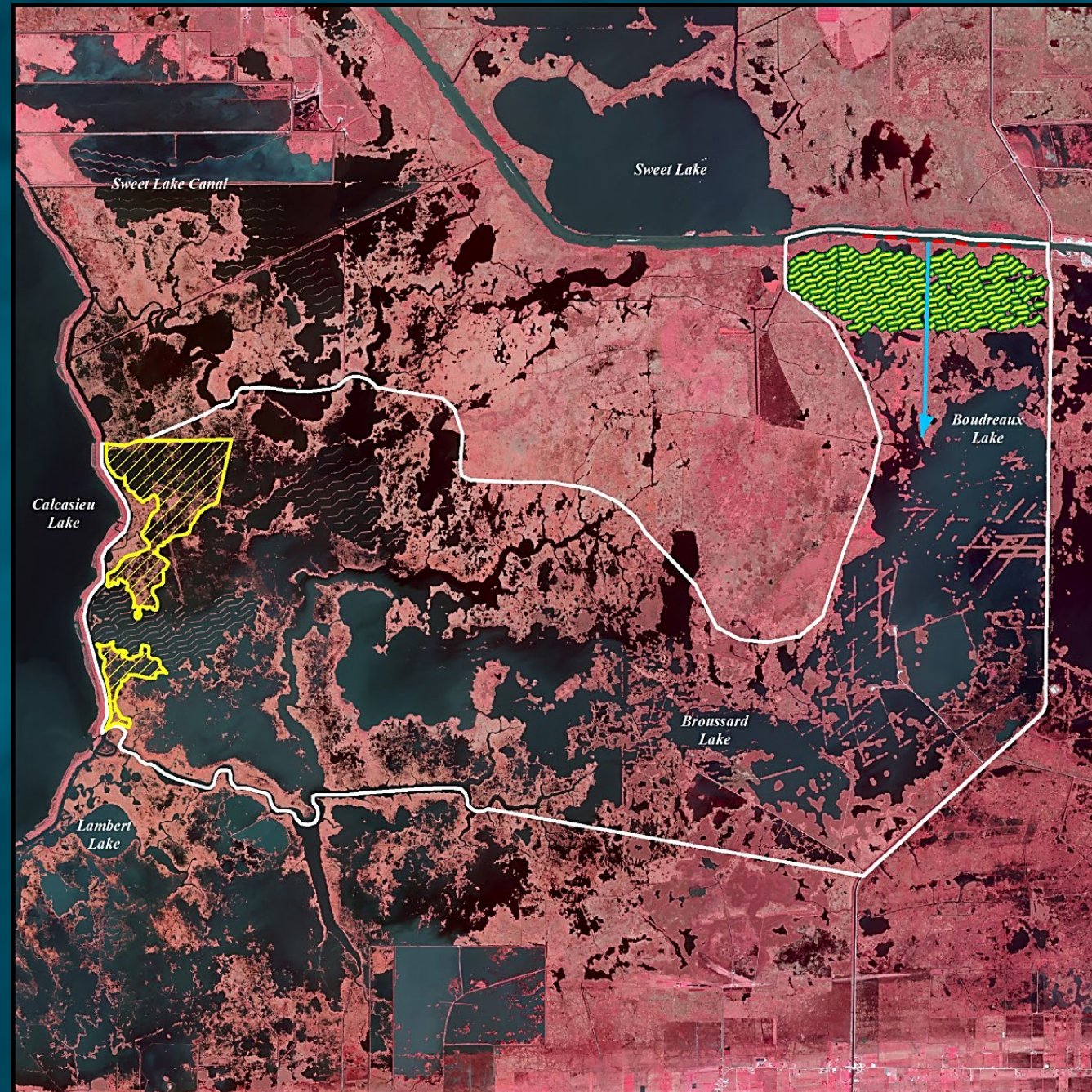


CONSTRUCTION UPDATE

Cameron-Creole Freshwater Introduction



Hydrologic Improvement for an area on
the east side of Calcasieu Lake with
limited freshwater input



CONSTRUCTION UPDATE

Cameron-Creole Freshwater Introduction

Funding Source: CWPPRA (NRCS)

E&D Budget: \$1.5 Million

Construction Budget: \$27 Million

Area Benefited: 35 square mile

Earthen Terraces: 26 Miles

Completion Date: September 2021



Cameron-Creole Freshwater Introduction



LOUISIANA CONNECTIONS



THE WATER INSTITUTE
OF THE GULF®



GEOENGINEERS



GENERAL CONTRACTORS
BERRY BROS.
Since 1956
BERWICK, LOUISIANA



FROGCO
AMPHIBIOUS EQUIPMENT



USGS
science for a changing world



TBS **T. BAKER SMITH**
A CENTURY OF SOLUTIONS



GH **LONNIE G. HARPER & ASSOCIATES, INC.**
CIVIL ENGINEERING & LAND SURVEYING

Low Land Construction Co., Inc.



T **TARPAN**
construction
LLC



INDEPENDENT
LAND SERVICES LLC
A Professional Land Services Company



OIL
LAND SERVICES

M&M Electric



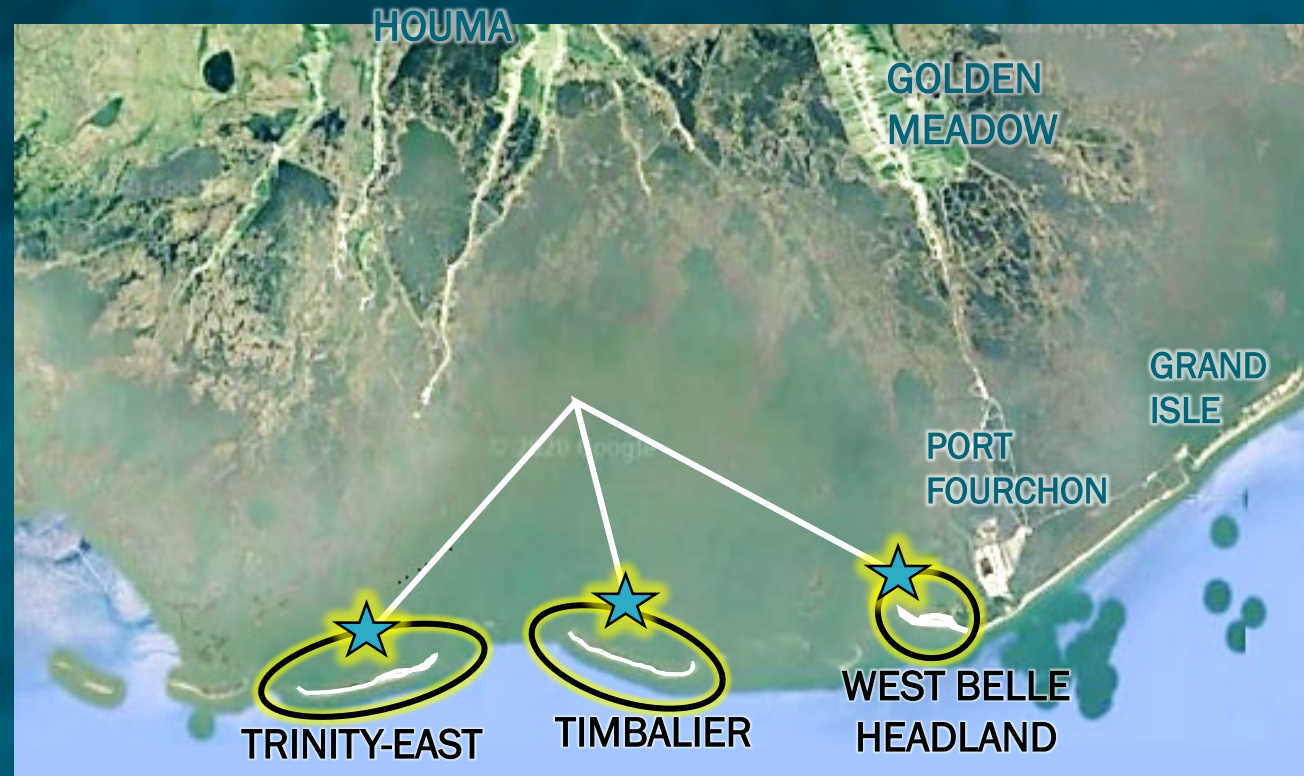
CONSTRUCTION UPDATE

TERREBONNE BASIN

BARRIER ISLAND & BEACH NOURISHMENT



1,100 Acres of Beach, Dune, Marsh
One Project – 3 Sites



CONSTRUCTION UPDATE

TERREBONNE BASIN

BARRIER ISLAND & BEACH NOURISHMENT

Funding Source: NFWF

Total Project Cost: \$167 Million

Construction Budget: \$158 Million

E&D Budget: \$ 6 Million

O&M, MAM \$ 3 Million

Borrow Source: Gulf of Mexico
(Ship Shoal)



180 JOBS

Not Counting Government Workers

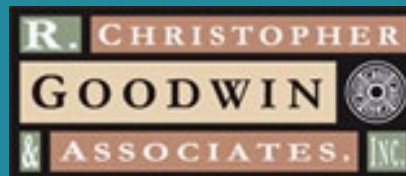


TERREBONNE BASIN

BARRIER ISLAND & BEACH NOURISHMENT



LOUISIANA CONNECTIONS



CONSTRUCTION UPDATE

SPANISH PASS INCREMENT

Barataria Basin Ridge & Marsh Creation Project



Creating approximately
1,700 Acres of Marsh and Ridge



CONSTRUCTION UPDATE

SPANISH PASS INCREMENT

Barataria Basin Ridge & Marsh Creation Project

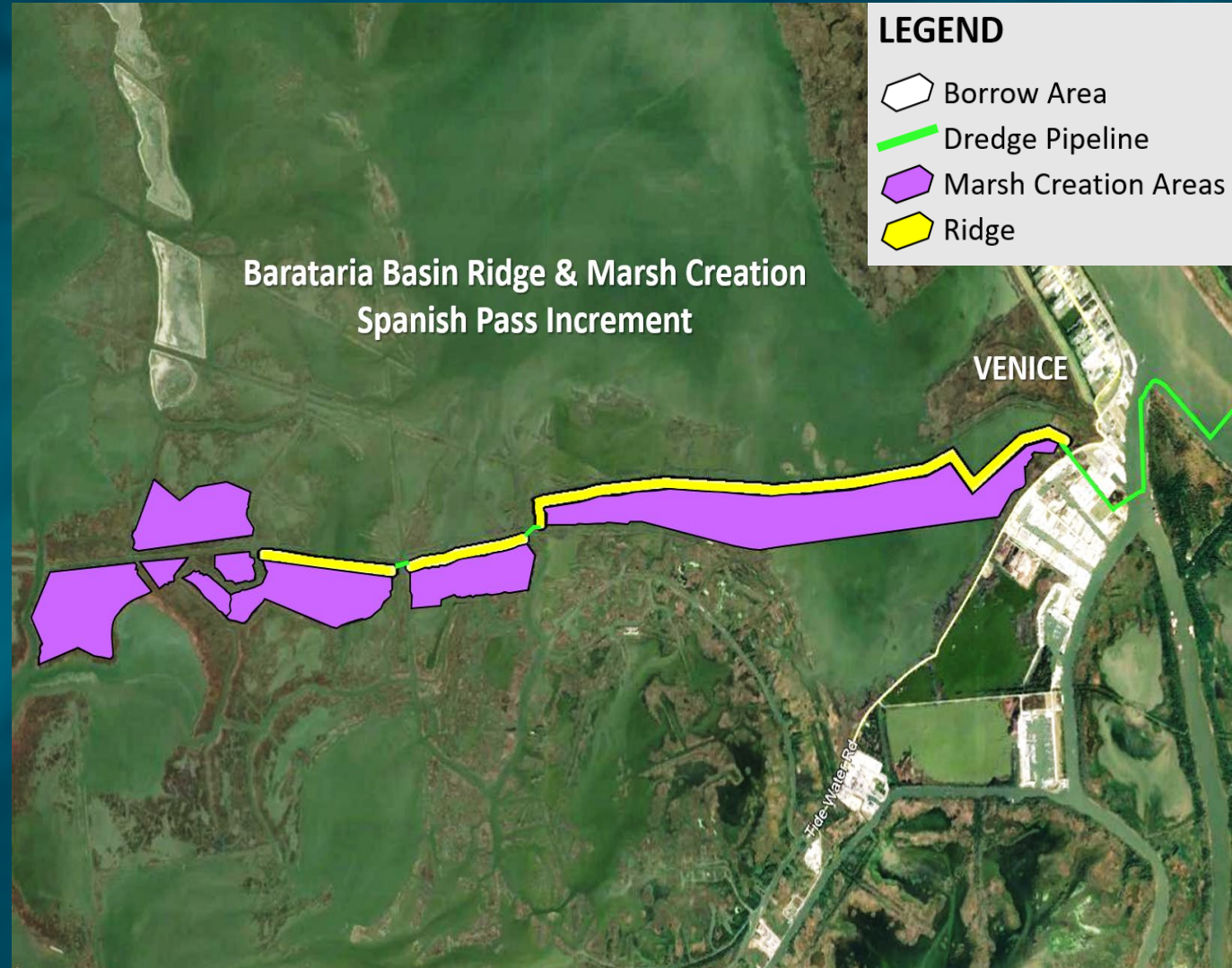
By Volume the Largest Dredging
Project Ever Bid by CPRA

16 Million Cubic Yards

Funding Source: NRDA / LA TIG

Estimated Cost: \$100 Million

Borrow Source: Mississippi River



180 JOBS

Not Counting Government Workers

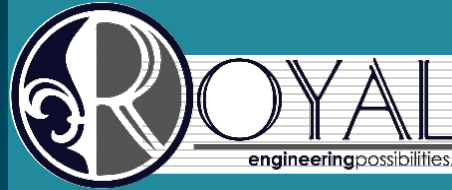


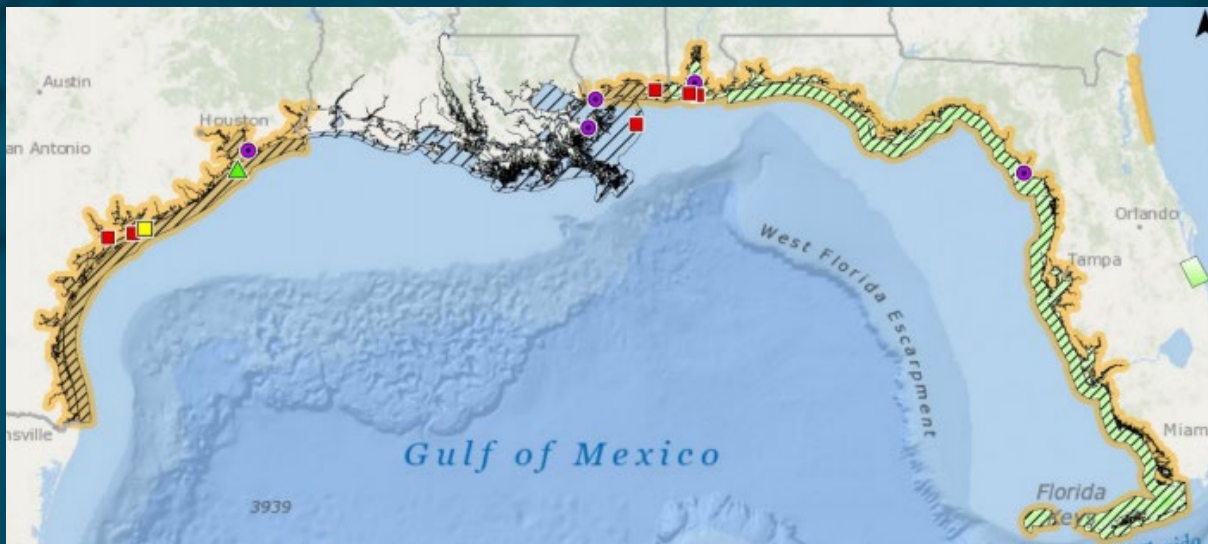
SPANISH PASS INCREMENT

Barataria Basin Ridge & Marsh Creation

LOUISIANA CONNECTIONS

WEEKS





Alabama



Florida



Louisiana



Mississippi



Texas



Regionwide



Open Ocean

Regionwide Trustee Implementation Group Draft Restoration Plan/ Environmental Assessment 1 : Birds, Marine Mammals, Oysters, and Sea Turtles



Public Comments Period Closes May 6, 2021

On Regionwide TIG Restoration Plan/ Environmental Assessment 1

11 projects proposed, totaling \$99.6 million
in 5 states bordering the Gulf of Mexico, including
Louisiana's Chandeleur Islands and
Biloxi Marsh oysters.

For more info and how to comment, visit:

www.gulfspillrestoration.noaa.gov

CONNECT WITH US!



@LouisianaCPRA

