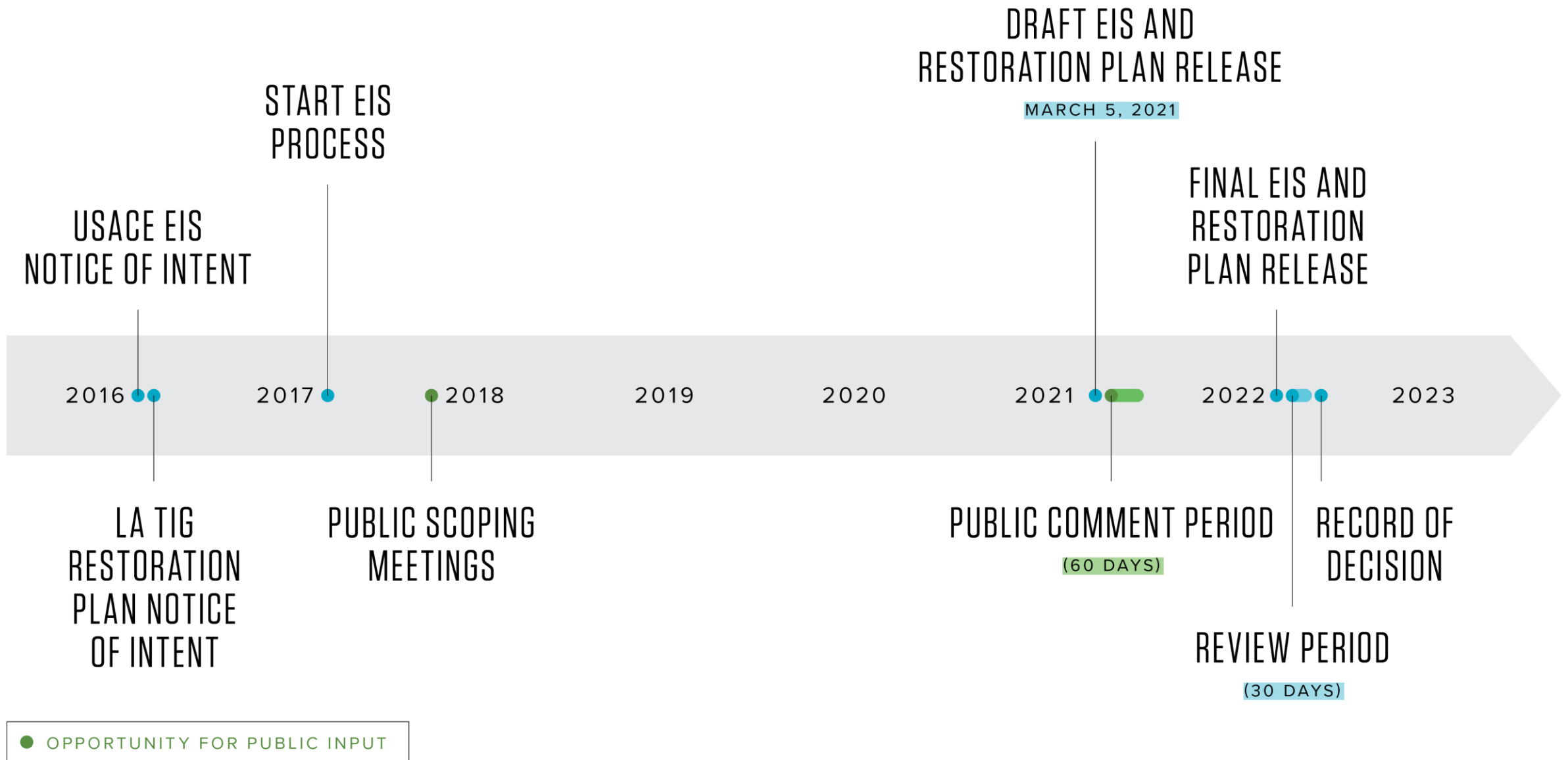


COASTAL PROTECTION AND RESTORATION AUTHORITY

# Addressing Louisiana's Land Loss Crisis

MID-BARATARIA SEDIMENT DIVERSION  
DRAFT ENVIRONMENTAL IMPACT STATEMENT  
& DRAFT RESTORATION PLAN





# Official Documents

## DRAFT RESTORATION PLAN #3.2:

LA TIG'S PROPOSAL TO FUND PROJECT, INCLUDING MEASURES TO AVOID, MINIMIZE, AND MITIGATE NEGATIVE IMPACTS WHERE FEASIBLE, UNDER THE OIL POLLUTION ACT

[gulfspillrestoration.noaa.gov/restoration-areas/louisiana](https://gulfspillrestoration.noaa.gov/restoration-areas/louisiana)

## DEIS:

DETAILS BENEFITS AND IMPACTS OF THE PROJECT UNDER THE NATIONAL ENVIRONMENTAL POLICY ACT

[mvn.usace.army.mil/Missions/Regulatory/Permits/Mid-Barataria-Sediment-Diversion-EIS/](https://mvn.usace.army.mil/Missions/Regulatory/Permits/Mid-Barataria-Sediment-Diversion-EIS/)



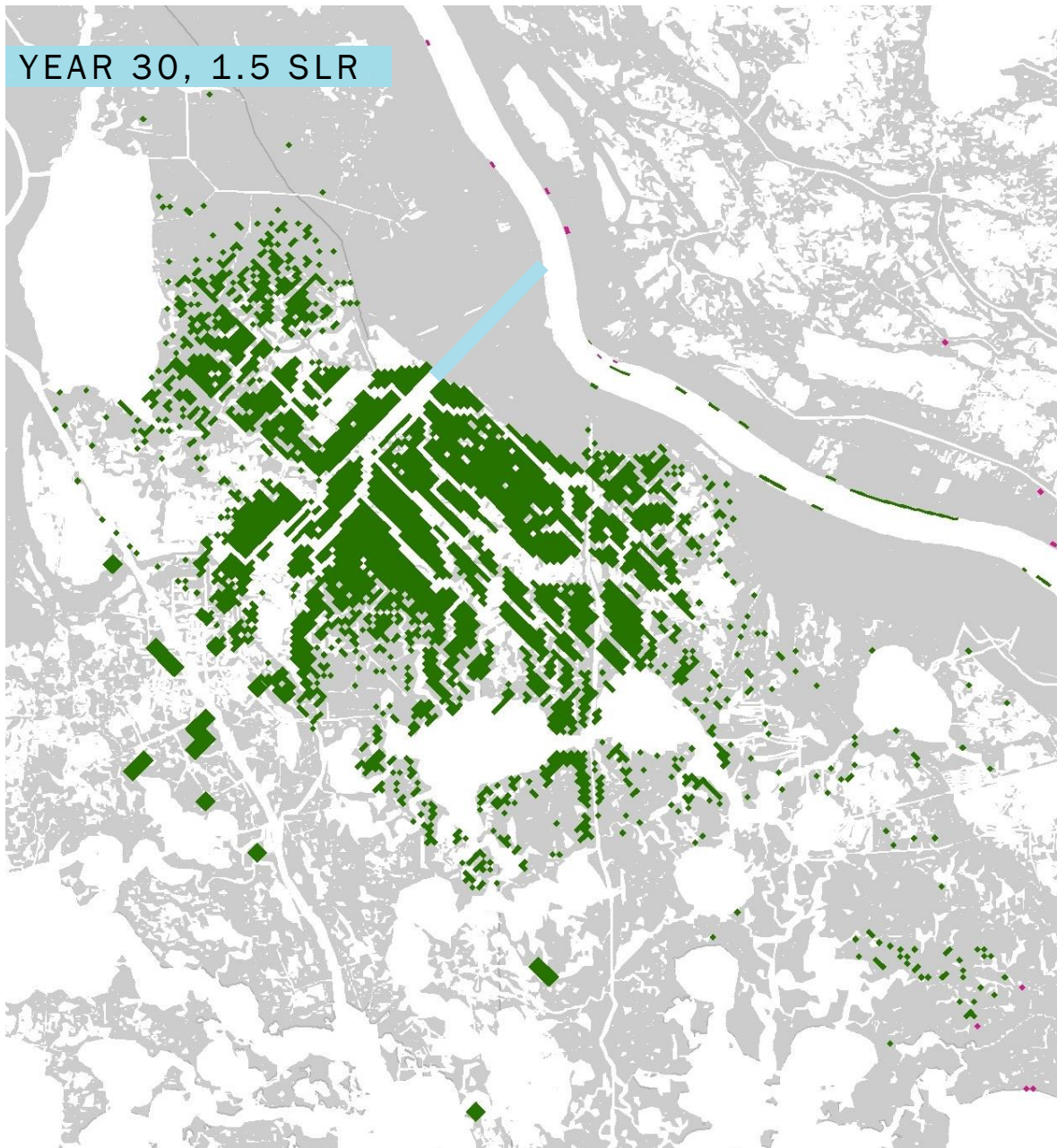
# EIS: Environmental Resources Evaluated

- Noise
- Oil and gas resources
- Prime Farmland
- Public Safety (Flood Risk Reduction)
- Recreation (including fishing)
- Soils/Sediment (River and Basin)
- Socioeconomic (population, tax revenue, housing, etc.)
- Storm Surge/Flooding
- Threatened and Endangered Species (T&E)
- Water Quality (salinity/nutrients)
- Wetlands and Waters of the U.S.
- Aesthetic and Visual Resources
- Air Quality
- Aquatic Resources
- Terrestrial Resources
- Commercial Fisheries (industry impacts)
- Cultural Resources
- Environmental Justice (EJ)
- Essential Fish Habitat (EFH)
- Groundwater
- Land Use
- Marine Mammals
- Navigation (deep draft and tows)

# Project Benefits







# Marsh Created and Sustained

## Barataria:

+17,300 acres at 30 yrs

+13,400 acres at 50 yrs

Represents 20% of the total remaining marsh in the Basin

## Birdfoot Delta:

-2,000-3,000 acres

# Storm Surge Protection



## CREATES AND PROTECTS COASTAL MARSHES THAT REDUCE STORM SURGE AND WAVE HEIGHTS DURING LARGE STORMS:

- Created and sustained land provides 0.5-1.0 foot of storm surge reduction in areas north of the diversion
- Protected populations include areas in the west bank and near New Orleans with high concentration of minority and low-income communities
- Other areas north of the sediment diversion, including some outside of the levee system, including coastal communities critical to Louisiana's economy



# Economic Impact

## PLAQUEMINES, ST. BERNARD, ORLEANS & JEFFERSON PARISHES

Benefits to local and state businesses, governments and residents due to construction of the project.

**\$1.4 billion** increase in sales

**\$648 million** increase in household earnings

**Nearly 12,400 jobs**

**\$890 million** in gross regional product





# Other Project Benefits

## AQUATIC SPECIES BENEFITS

- Large Mouth Bass (moderate benefit, including recreational fishery)
- Red Drum (moderate benefit, including recreational fishery)
- Gulf Menhaden (moderate benefit, including commercial fishery)
- Bay Anchovy (minor benefit, including commercial fishery)
- White Shrimp (negligible to minor benefit, including recreational and commercial fishery)
- Blue Crab (negligible to minor benefit, including recreational and commercial fishery)

## MINOR TO MODERATE BENEFITS TO SOME TERRESTRIAL SPECIES

- Alligator
- Green-winged Teal
- Mottled Duck

## RECREATIONAL USE BENEFITS

- Duck hunting
- Bird watching
- Recreational fishing (red drum and large mouth bass)

## BENEFITS TO HABITAT (IN ADDITION TO WETLANDS)

- Submerged Aquatic Vegetation (SAV)
- Shallow bottom

## BENEFITS TO THE NORTHERN GULF OF MEXICO ECOSYSTEM THROUGH TRANSPORT OF ENERGY FROM BARATARIA BASIN

# Impacts & Mitigation Measures

BROWN SHRIMP & OYSTERS

COMMUNITIES OUTSIDE FLOOD PROTECTION

ENVIRONMENTAL JUSTICE COMMUNITIES & POPULATIONS

DOLPHINS

# Brown Shrimp and Oysters



## \$33 MITIGATION, CONTINUED MONITORING

### IMPACT

- Collateral injuries under both no action alternative (future without project) and MBSD preferred alternative (future with project)
- MBSD project accelerates injuries
- Reduction in abundance, but resources not fully eliminated

#### Other LA TIG/CPRA Oyster Restoration Efforts:

- Oyster Cultch Placement
- Brood Reef Program
- Hatchery Development & Ops
- Oyster Strategic Plan

### INITIAL MITIGATION & STEWARDSHIP PROPOSAL

#### Oysters

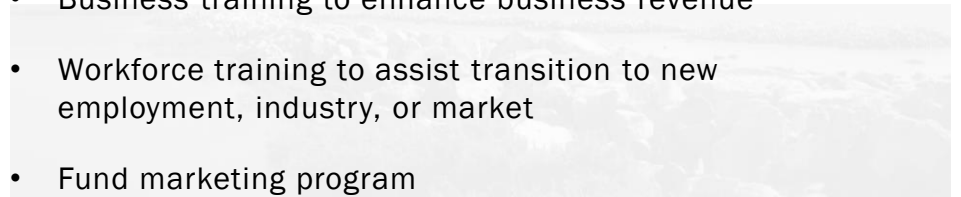
- Establish new public seed ground in lower basin
- Provide cultch material to enhance public and private growing areas
- Enhance oyster broodstock reefs
- Assistance in transition to off-bottom culture

#### Shrimp

- Vessel Refrigeration
- Fund Gear improvements to increase efficiency

#### Both

- Business training to enhance business revenue
- Workforce training to assist transition to new employment, industry, or market
- Fund marketing program

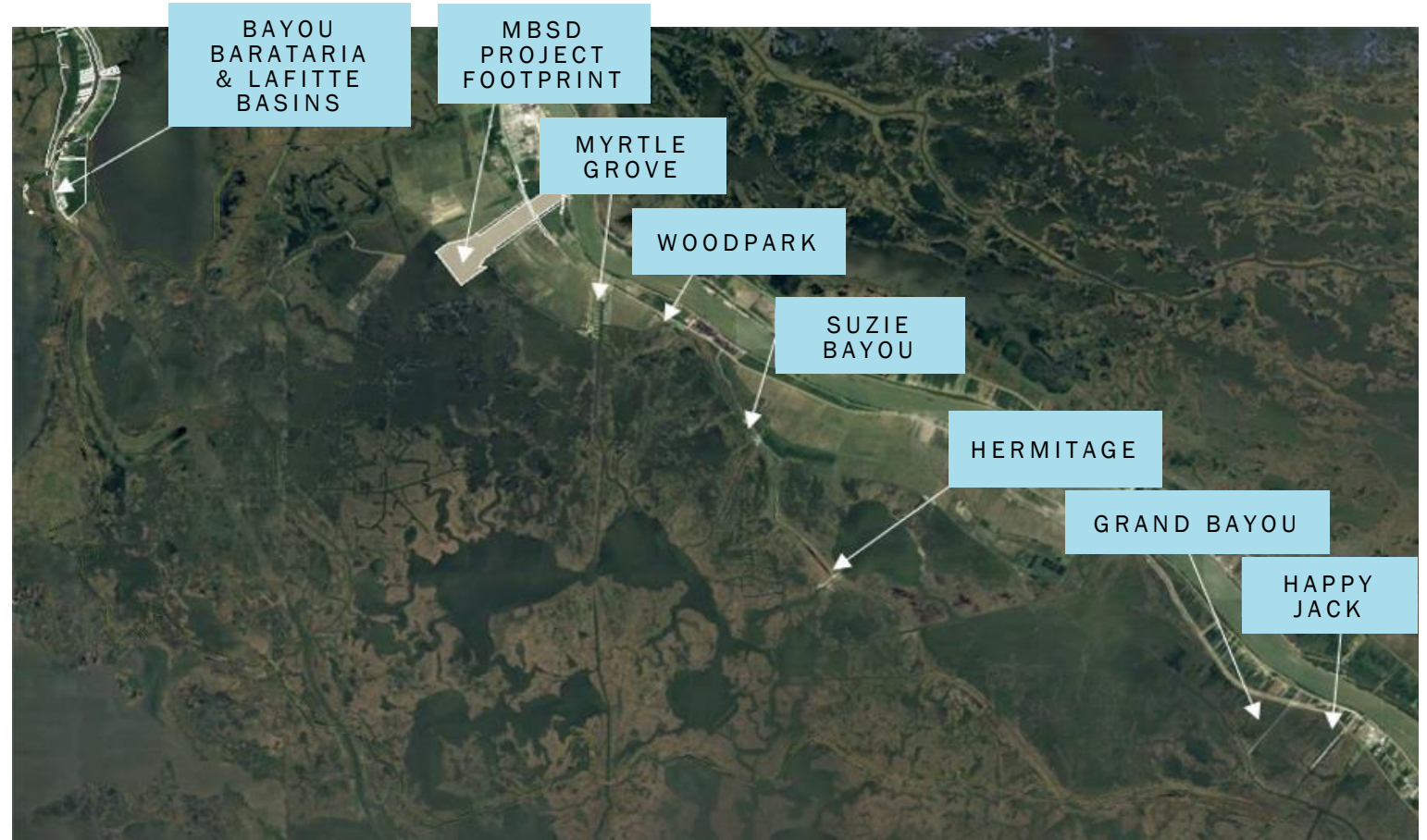


# Increased Water Levels

## COMMUNITIES NEAR PROJECT SITE OUTSIDE FLOOD PROTECTION

### IMPACTS

- Impacts decrease with greater distance from MBSD Location
- MBSD increases water levels in the short term; After 50 years, frequency of flooding is the same with or without the project
- Includes some Environmental Justice, low income and minority populations





# Increased Water Levels

## IMPACTS

- Impacts decrease with greater distance from MBSD Location
- MBSD increases water levels in the short term; After 50 years, frequency of flooding is the same with or without the project

## INITIAL MITIGATION & STEWARDSHIP PROPOSAL

### Structural mitigation

- Community Features – raise roads and other infrastructure
- Property Specific – raising buildings, improving access, septic
- Acquisition of property interests
- Proposing voluntary easements in communities outside levee protection
- Open to fee acquisition where requested by property owner
- Monitoring and adaptive management
- Ongoing community outreach

# Environmental Justice

**Environmental Justice (EJ)** is the fair treatment and meaningful involvement of all people regardless of race, color, national origin, or income with respect to the development, implementation and enforcement of environmental laws, regulations and policies.

## BENEFITS

Protected communities: Greater New Orleans area (significant minority and low-income populations)

Up to one foot of storm surge reduction from marshes created and protected by MBSD

## IMPACTS

Potential for disproportionately high and adverse impacts to low income and minority populations due to:

- Impacts to commercial fisheries
- Impacts to subsistence fishing
- Flood and storm impacts in communities near MBSD

## INITIAL MITIGATION PROPOSAL

### Flooding

- Assisting property owners to elevate their homes and other structures on their properties
- Assisting property owners and/or communities to reduce flooding of their septic/sewer systems and other utilities
- Elevating roadways or utilities
- Paying property owners for losses in value of their properties due to increased flooding, if any

### Fisheries

- Funding for new equipment (i.e. upgraded vessel refrigeration or gear improvements)
- Funding for small business/startup support (i.e. grant programs)
- Fund marketing program
- Training programs to gain new skills and switch industry or trade
- Small business development and operations training
- Improve shoreline access for subsistence fishing and others

## ONGOING COMMUNITY OUTREACH & ENGAGEMENT

# Dolphins

\$20M STEWARDSHIP, \$20M MONITORING

## IMPACT

Decreased  
survival rate

## INITIAL MITIGATION & STEWARDSHIP PROPOSAL

- Monitoring and Adaptive Management
- Enhance Statewide Stranding Network
- Fund efforts to reduce other stressors on dolphin population
- Establish contingency fund to address potential UME declaration in Barataria Basin



# Our estuary will continue to change

WITH OR WITHOUT THE  
MID-BARATARIA  
SEDIMENT DIVERSION

## WITHOUT THE PROJECT, THE ESTUARY WILL COLLAPSE

- Continued rapid land loss
- Up to 85% less marsh than what we see today
- Increasing dramatic swings in salinity
- Loss of functioning estuary and habitat for species
- Communities see increased tidal flooding
- Increased storm surge risk (including greater New Orleans area)

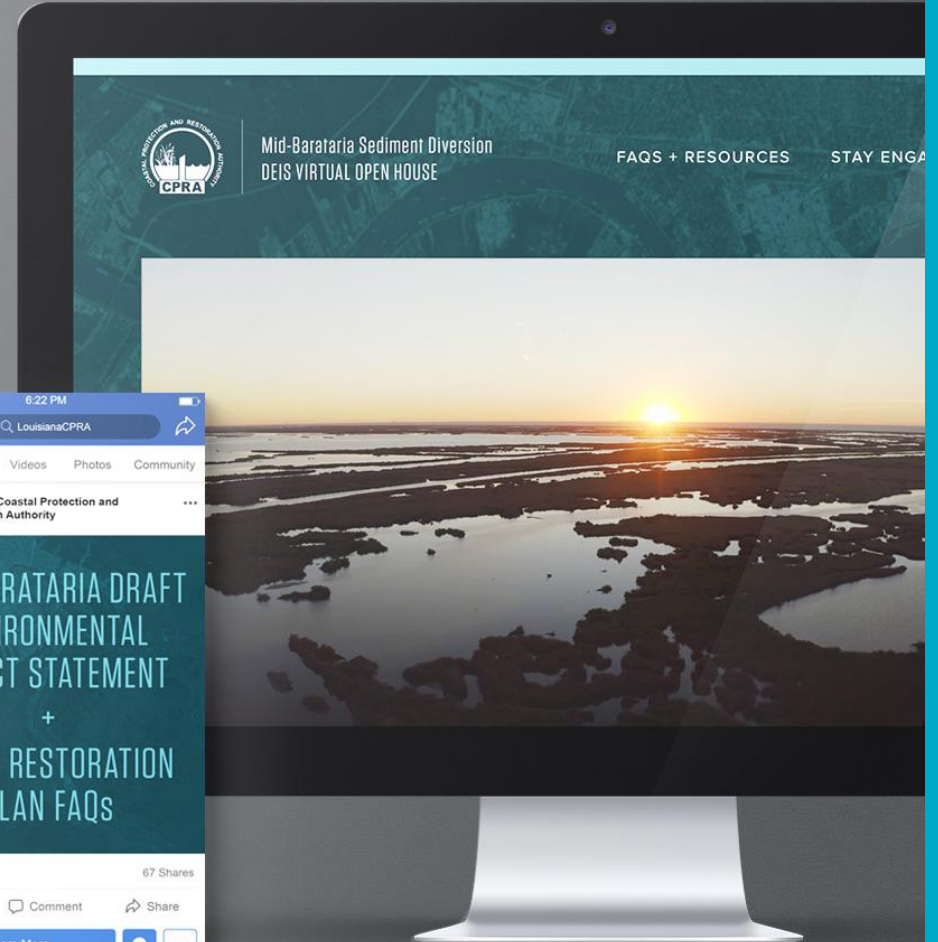
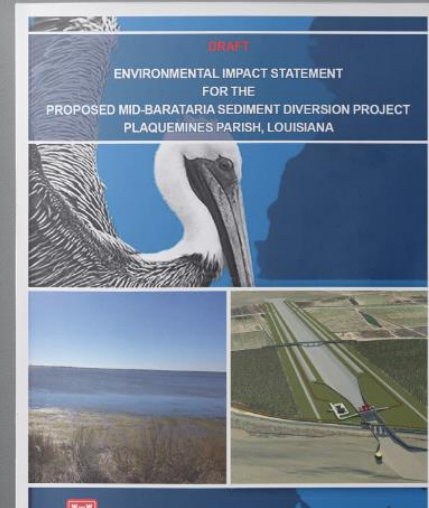
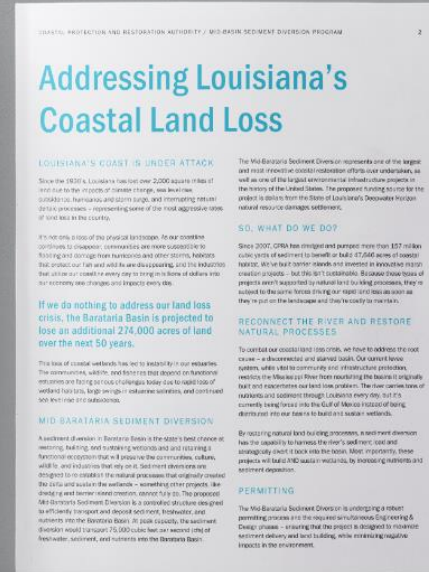
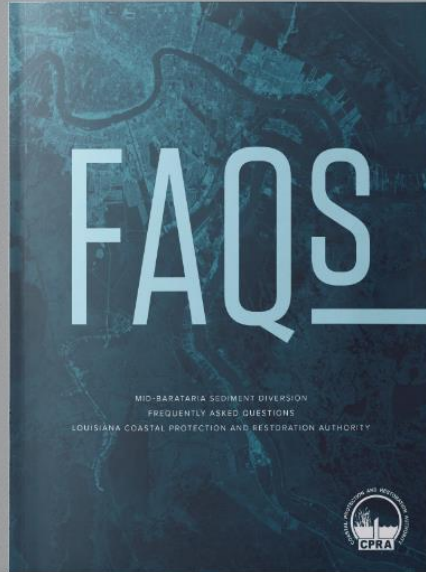
THE PROJECT WILL RETURN SOME OF THE  
HISTORIC FUNCTION OF THE BARATARIA  
BASIN ESTUARY AND ENSURE THAT FUNCTION  
CONTINUES IN THE FUTURE, DESPITE RISING  
SEA LEVELS



# Outreach & Engagement

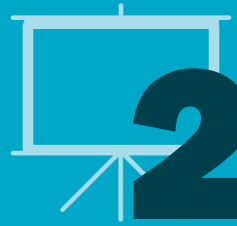


# coastal.la.gov/midbarataria



# Outreach & Engagement

OVER THE LAST 4 YEARS



## 230 MEETINGS



ELECTED & PARISH OFFICIALS



SEAFOOD INDUSTRY



RECREATION INDUSTRY



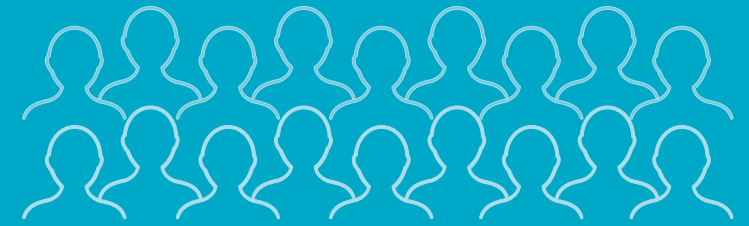
COMMUNITIES NEAR PROJECT SITES



NGO, NONPROFIT, AND STAKEHOLDER GROUPS



GENERAL PUBLIC



## 11,000

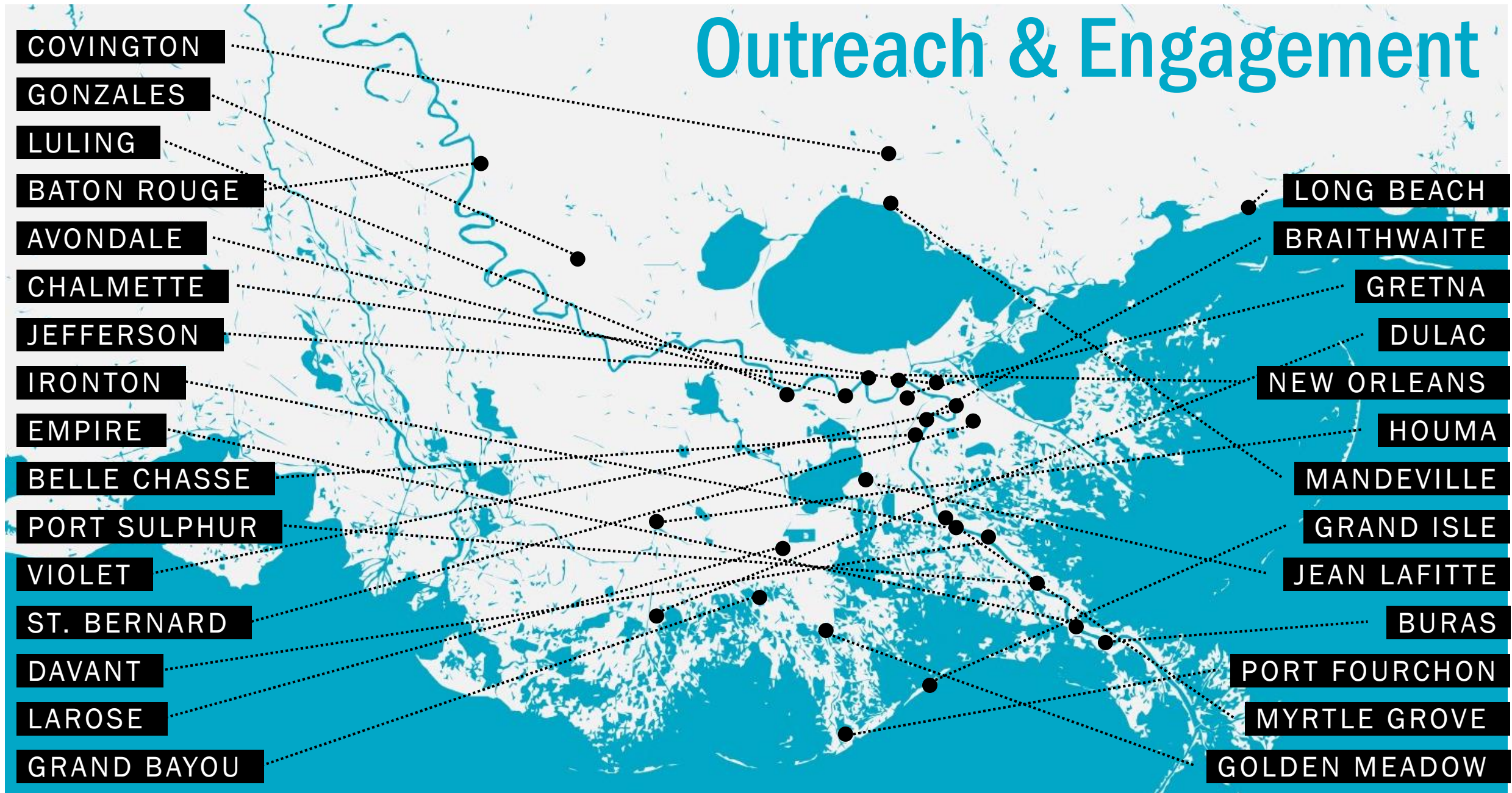
## STAKEHOLDERS REACHED

# Stakeholder Groups

- American Society of Civil Engineers
- Audubon Louisiana
- Coalition for Coastal Resilience and Economy
- Coalition to Restore Coastal Louisiana
- Coastal Communities Consulting
- Coastal Conservation Association
- CPRA Board
- Delta Dispatches Podcast
- Environmental Defense Fund
- Finfish Task Force
- GNO Inc.
- Governor's Advisory Commission
- Greater New Orleans Foundation
- Greater New Orleans Port Safety Council
- Internal CPRA staff
- JEDCO
- Jefferson Parish Government
- Louisiana Association of Environmental Professionals
- Louisiana Association of Conversation Districts
- Louisiana Charter Boat Association
- Louisiana Federal Delegation
- Louisiana Sea Grant
- Louisiana State Delegation
- Maritime Navigation and Safety Association Board Meeting
- Mississippi Secretary of State/State delegation
- National Conference on Ecosystem Restoration
- Navigation Focus Groups
- Orleans Parish Government
- Oyster Task Force
- Plaquemines Association of Business and Industry
- Plaquemines Coastal Zone Management Committee
- Plaquemines Economic Development and Tourism Committee
- Plaquemines Knights of Columbus
- Plaquemines Parish Government/Council
- Plaquemines Parish School Board Ponchatrain Conservancy
- Restore the Mississippi River Delta Coalition
- Shrimp Task Force
- St. Bernard Kiwanis Club
- St. Bernard Parish Government/Council
- St. Bernard Rotary Club
- St. Tammany Parish Government
- State of the Coast
- The National Wildlife Federation
- Theodore Roosevelt Conservation Partnership
- USACE New Orleans staff and leadership
- USGS
- Westbank Business and Industry Association
- Westbank Rotary Club



# Outreach & Engagement



# HOW TO COMMENT



## MAIL

U.S. Army Corps of Engineers, New Orleans District  
Attn: CEMVN-ODR-E, MVN-2012-2806-EOO  
7400 Leake Avenue, New Orleans, LA 70118

## ONLINE

[parkplanning.nps.gov/MBSD](http://parkplanning.nps.gov/MBSD)



## PHONE

(866) 211-9205



COASTAL PROTECTION AND RESTORATION AUTHORITY

# Thank You

