



FOR IMMEDIATE RELEASE

Contact: Chuck Perrodin
Public Information Director 1
(o) 225-342-7615

ADVISORY: FEBRUARY 22, 2019

**West Shore Lake Pontchartrain Project Partnering Agreement
Signing Ceremony Scheduled**

Project Will Benefit More Than 60,000 Louisiana Residents

Baton Rouge, La – Louisiana Gov. John Bel Edwards will participate today in the signing ceremony of a project partnering agreement (PPA) with the [Louisiana Coastal Protection and Restoration Authority](#) (CPRA), the United States Army Corps of Engineers (USACE), and the Pontchartrain Levee District (PLD) for the West Shore Lake Pontchartrain project. The 2:30 p.m. event at the PLD, 2069 Railroad Avenue, Lutcher, Louisiana, will be hosted by PLD President Ricky Bosco and PLD Executive Director Monica Gorman.

Gov. Edwards, Representatives Graves and Richmond, Col. Clancy, St. John Parish President Natalie Robottom, St. Charles Parish President Larry Cochran, and St. James Parish President Timmy Roussel will provide remarks about the significance of this structural protection project and its benefits to more than 60,000 residents in the towns of Montz, Laplace, Reserve, Lutcher, Gramercy, Grand Point, Convent, Garyville and Romeville. Once completed, these levees and wetlands will reduce the risk of damages from tropical storm surge in the river parish region and protect communities around Lake Pontchartrain and Lake Maurepas.

Located in the Pontchartrain basin and currently in the engineering and design phase, this project will construct 18.5 miles of earthen levees and floodwalls including one mile of T-wall in St. Charles and St. John the Baptist Parishes. Several floodgates, drainage structures and pump stations will also be constructed along the alignment from the Mississippi River in Garyville to the Bonnet Carre spillway outside of LaPlace. Additionally, non-structural protection measures will be included for communities in St. James Parish.

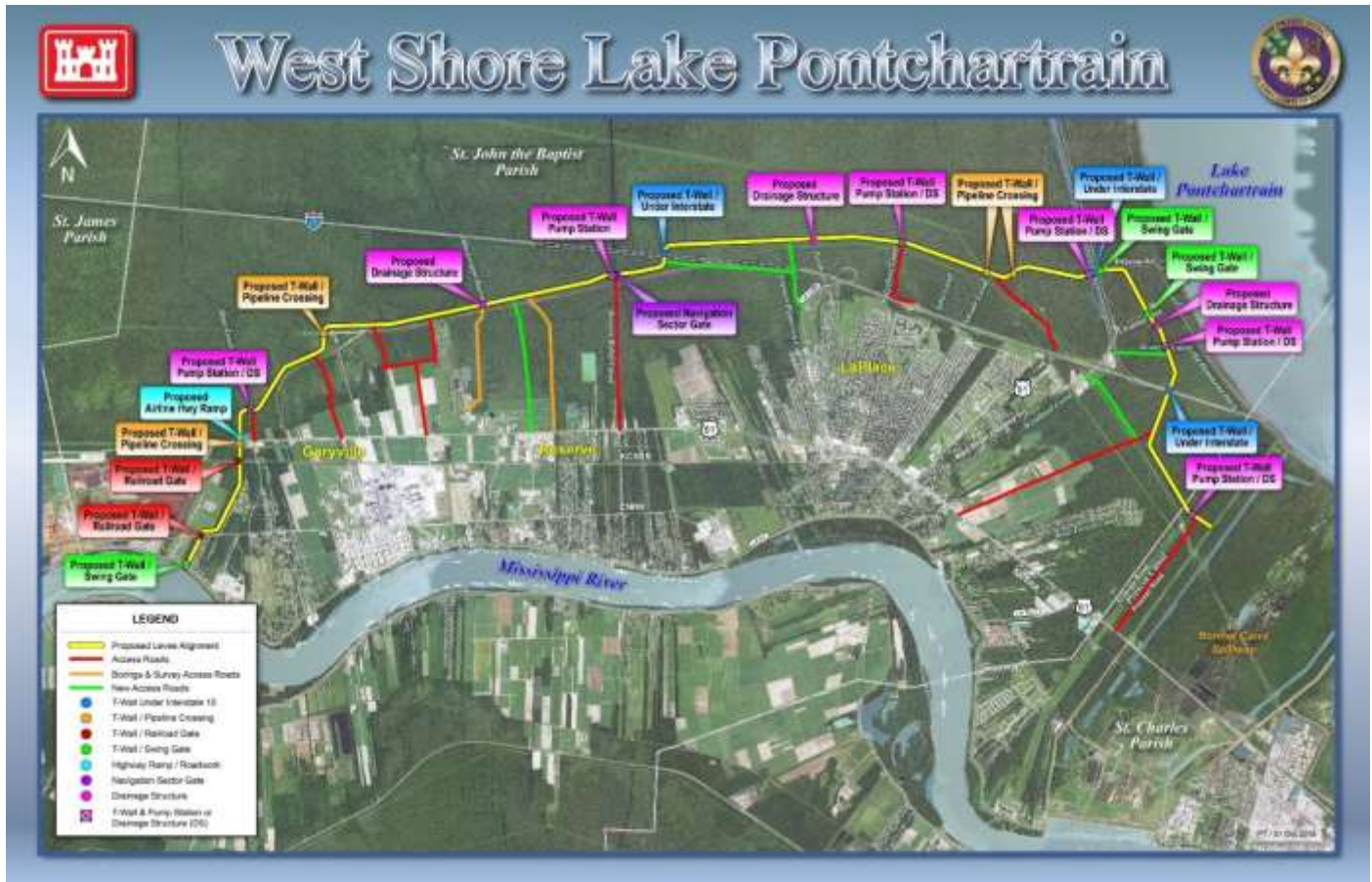
Federal funds in the amount of \$760 million are allocated to this project through the Bipartisan Budget Act of 2018, which was signed into law Feb. 9, 2018.

"Fifty years from now, with the implementation of this project, expected annual damages can be expected to be reduced by \$865 million," says CPRA Board Chair Chip Kline. "This represents enormous savings for area residents and the state."

Communities on the west shore of Lake Pontchartrain are at increasing risk to tropical storm surge flooding due to wetland loss and relative sea level rise. The area is currently without storm protection levees and remains susceptible to damages from tropical storm surges. Some natural buffer protection is afforded by the Maurepas Swamp that separates developed areas from nearby tidal lakes, but the swamp has degraded over time and the buffer it provides between the lakes and towns is decreasing. Meanwhile, population is increasing with suburban and industrial development along the river corridor between Baton Rouge and New Orleans, lending to the criticality of this tremendous project for these communities.

"Solving a complex problem often requires multi-faceted solutions," says CPRA Executive Director Bren Haase. "This is why CPRA emphasizes projects working together to achieve the greatest benefit. This is one project in part of a larger plan to help reduce risk and improve resiliency for this region."

For the West Shore project, synergy will come in the form of a shared border with the River Reintroduction into Maurepas Swamp project, which will reestablish and nourish approximately 45,000 acres of the swamp with freshwater, nutrients and sediment from the Mississippi River that historically sustained the swamp. Together, these adjacent projects will provide a greater level of protection than either would alone. The West Shore project will provide structural and nonstructural features to reduce the risk of storm surges that reach the project. The Maurepas Swamp project will provide a robust and healthy swamp that will act as an added buffer to reduce storm surge before it reaches the West Shore Project area.



###

Louisiana Coastal Protection and Restoration Authority is the single state entity with authority to develop, articulate, implement, and enforce a comprehensive coastal Master Plan of unified vision, to reduce tropical storm surge flood impact, to restore our bountiful natural resources, to build land to protect our nation's critical energy infrastructure, and to secure Louisiana's coast now and for future generations.