



Coastal Protection and Restoration Authority  
450 Laurel Street, Baton Rouge, LA 70804 | [coastal@la.gov](mailto:coastal@la.gov) | [www.coastal.la.gov](http://www.coastal.la.gov)

## 2017 Coastal Master Plan

---

# Developing the List of Candidate Projects



Date: August 28, 2015

August 2015

## **Coastal Protection and Restoration Authority**

This document was prepared in support of the 2017 Coastal Master Plan being prepared by the Coastal Protection and Restoration Authority (CPRA). CPRA was established by the Louisiana Legislature in response to Hurricanes Katrina and Rita through Act 8 of the First Extraordinary Session of 2005. Act 8 of the First Extraordinary Session of 2005 expanded the membership, duties, and responsibilities of CPRA and charged the new authority to develop and implement a comprehensive coastal protection plan, consisting of a master plan (revised every five years) and annual plans. The CPRA's mandate is to develop, implement, and enforce a comprehensive coastal protection and restoration master plan.

## Table of Contents

---

Coastal Protection and Restoration Authority .....	i
Illustration .....	iii
List of Tables.....	iii
List of Figures.....	iii
Background.....	1
Step 1: Refinement of 2012 Coastal Master Plan Projects .....	1
Step 2: 2017 New Project Development Program .....	3
Step 3: Identify Candidate Projects from 2012 for Reconsideration .....	4
Summary: 2017 Coastal Master Plan Candidate Projects .....	5
Figures and Tables.....	6
References.....	27

## Illustration

---

### List of Tables

---

Table 1: 2012 Projects (or *Project Increments) Moved to FWOA .....	6
Table 2: 2012 Projects Removed from 2017 Consideration.....	7
Table 3: 2012 Projects with Revised Footprints.....	7
Table 4: 2012 Master Plan Projects Being Considered .....	8
Table 5: 2017 Coastal Master Plan New Project Development Program Submissions .....	11
Table 6: New Projects Being Considered Based on New Project Development Program .....	18
Table 7: Candidate Projects from 2012 for Reconsideration.....	19
Table 8: Final List of 2017 Candidate Projects.....	20

### List of Figures

---

Figure 1: 2012 Coastal Master Plan Projects Being Considered for 2017.....	24
Figure 2: Projects Being Considered through the New Project Development Program .....	25
Figure 3: 2017 All Projects Being Considered .....	26

## Background

As coastal Louisiana faces increasing threats from flooding and sea level rise, there is a great need to advance our scientific understanding of the coast and how we will need to adapt to future conditions. CPRA is undertaking this challenge through five year updates of Louisiana's Comprehensive Master Plan for a Sustainable Coast.

The 2017 Coastal Master Plan builds on past progress and establishes a clear vision for the future. It carries the 2007 and 2012 plans forward by improving the methods used to ensure projects are completed as efficiently and effectively as possible.

This document describes the process by which CPRA developed the list of candidate projects to evaluate for consideration in the 2017 Coastal Master Plan.

## Step 1: Refinement of 2012 Coastal Master Plan Projects

Projects in the 2012 Coastal Master Plan or increments of projects included in the project list that have been constructed or have funding for construction as of January 1, 2015, will not be part of the list of candidate projects for 2017. They will instead be included as part of future without action (FWOA)<sup>1</sup>. In total, 19 projects included in the 2012 Coastal Master Plan meet this criterion (Table 1).

Eighteen 2012 Coastal Master Plan projects will not be included in the list of candidate projects based on new information gained since the 2012 Coastal Master Plan was developed (Table 2).

- The Bayou Sale Ridge Restoration (03b.RC.01), West Cote Blanche Bay Oyster Reef Restoration (03b.OR.02), and East Cote Blanche Bay Oyster Reef Restoration (03b.OR.03) projects were removed due to constructability issues/concerns.
- The GIWW Bank Stabilization (Freshwater Bayou to Calcasieu Ship Channel; 004.BS.03) and Calcasieu Ship Channel Bank Stabilization (Gulf to Calcasieu Lake; 004.BS.06) projects were removed due to CPRA's policy that bankline stabilization on federally navigable waterways is a federal responsibility, and thus no state dollars would be allocated to such projects. While the state will continue to support these projects and push for federal funding, they will not be modeled or compete for master plan funding.
- Berwick to Wax Lake (03b.HP.11) was removed based on analysis completed through the South Central Coastal Louisiana Flood Protection study, in which it was concluded that the elevations of the existing project are sufficient to provide 100-year protection over the next 50 years.

---

<sup>1</sup> Projects considered part of FWOA are either projects that have been constructed and will continue to have an effect on the landscape into the future or projects for which funding has been procured. Projects in FWOA will not compete for the potential future funding. The FWOA condition is the baseline against which candidate projects will be evaluated.

- Chacahoula Basin Hydrologic Restoration (03a.HR.04) was removed because existing hydraulic connectivity at the structure locations exceeds what was proposed for the project.
- Terrebonne GIWW Marsh Creation (03b.MC.05) was removed based on information gained through the Increase Atchafalaya to Terrebonne (TE-0110) study, which found that sufficient sediment is not available in the GIWW to construct the project. Beneficial use of any material dredged from the GIWW for the TE-0110 project will be further explored during engineering and design.
- Hackberry Ridge Restoration (004.RC.04) was removed because existing elevations are equal to or greater than those proposed for the project.
- Little Pecan Bayou Sill (004.HR.07), Sabine Pass Hydrologic Restoration (004.HR.08), Tom's Bayou Hydrologic Restoration (004.HR.12), Deep Lake Hydrologic Restoration (004.HR.13), Alkali Ditch Hydrologic Restoration (004.HR.14), Oyster Bayou Hydrologic Restoration (004.HR.17), Mermentau Basin Hydrologic Restoration: South of Grand Lake (004.HR.19), Mermentau Basin Hydrologic Restoration: South of White Lake (004.HR.20), and East Calcasieu Lake Hydrologic Restoration (004.HR.22) were not included in the National Ecosystem Restoration (NER) Tentatively Selected Plan (TSP) for the Southwest Coastal Louisiana Study (USACE 2015) and have been removed.

Twelve projects were modified based on availability of new information (Table 3).

- The West Shore Lake Pontchartrain (001.HP.05)<sup>2</sup> alignment was modified based on the USACE West Shore Lake Pontchartrain Study (USACE 2014).
- Upper Breton Diversion 250,000 cfs (001.DI.17) project location was modified based on the results of recent modeling analysis from ongoing Mississippi River studies.
- Alignments for four structural protection projects were modified based on additional modeling and analysis completed through the South Central Coastal Louisiana Flood Protection Study:
  - Morgan City Back Levee (03b.HP.10)
  - Franklin and Vicinity Hurricane Protection (03b.HP.12)
  - St. Mary/Iberia Upland Levee (03b.HP.14)<sup>3</sup>
  - Abbeville and Vicinity (004.HP.15)<sup>4</sup>
- The Morganza to the Gulf (03a.HP.02b) alignment was updated based on the new alignment identified in the U.S. Army Corps of Engineers (USACE) Post Authorization Change Report for Morganza to the Gulf (USACE 2013).
- Central Terrebonne Hydrologic Restoration (03a.HR.02) was modified based on CWPPRA Phase I analysis (NRCS 2014).
- The Belle Pass to Golden Meadow (03a.MC.07) project area was modified based on input from Lafourche Parish.

---

<sup>2</sup> Project identified as Greater New Orleans LaPlace Extension (001.HP.05) in the 2012 Coastal Master Plan.

<sup>3</sup> Project identified as Abbeville and Vicinity (004.HP.04) in the 2012 Coastal Master Plan.

<sup>4</sup> Project identified as Iberia/Vermilion Upland Levee (03b.HP.06) in the 2012 Coastal Master Plan.

- The Bayou Chene Floodgate (03b.HP.13) project was modified based on input from the St. Mary Levee District.
- Calcasieu Ship Channel Salinity Control Measures (004.HR.06) project features were updated based on the Calcasieu Ship Channel Salinity Control Measures Project Planning and Feasibility Decision Report (CPRA 2015).

In addition, due to the ongoing work with the River Reintroduction into Maurepas Swamp (PO-0029) project and the existing LCA Small Diversion at Convent/Blind River (PO-0068) project, the 2012 Coastal Master Plan West Maurepas Diversion (5,000 cfs; 001.DI.29) project has been separated into East Maurepas Diversion (2,000 cfs; 001.DI.21) and West Maurepas Diversion (2,000 cfs; 001.DI.29).

In total, 81 projects from the 2012 Coastal Master Plan will be evaluated as part of the 2017 Coastal Master Plan (Table 4; Figure 1).

## Step 2: 2017 New Project Development Program

Over the course of two solicitation periods totaling 140 days, CPRA accepted proposals for new projects to be considered in the 2017 Coastal Master Plan. New projects could be proposed by any source, including academia, parishes, elected officials, agencies, NGO's, landowners, business/industry, and the general public. New projects could be proposed that build and/or sustain land, provide significant flood risk reduction, address radical shifts in the coastal landscape, or confront future uncertainty challenges. Each project submission was screened using the following criteria:

- **Size Threshold:** For marsh creation project concepts, a minimum size threshold of 500 acres (i.e., the expected area of project effect on the coastal landscape) was required for a project to be considered for inclusion in the 2017 Coastal Master Plan analysis. Like the 2012 Coastal Master Plan, the 2017 Coastal Master Plan will involve a large-scale, regional approach to coastal risk reduction and restoration. The core of the master plan's analysis is an interconnected suite of predictive models that estimate restoration and risk reduction effects of candidate projects on various aspects of the coastal system. These models were developed for a system-wide, planning scale analysis and, consequently, in some cases, are unable to capture the effects of small-scale, localized projects in the coastal system.
- **Geographic Area:** The 2012 Coastal Master Plan screened out certain types of project concepts in some locations (e.g., marsh creation in the lower Atchafalaya or Wax Lake Deltas) because natural processes in those locations could be expected to produce similar results and investment in restoration projects in these areas would be unnecessary. Based on the current state of the Louisiana coast, the 2017 Coastal Master Plan will likewise screen out projects where natural processes are already producing the desired effects.
- **Adequate Information:** Project concepts need to be described in sufficient detail so they can be evaluated using the master plan models. Adequate information typically includes specific geospatial location data (for all project concepts), elevations (for risk

reduction projects) and, where applicable, information on proposed operational regimes (for restoration projects).

- **Consistency with Master Plan Objectives and Principles:** Project concepts need to clearly contribute and be consistent with the objectives and principles of the master plan (<http://coastal.la.gov/a-common-vision/2012-coastal-master-plan/>) to be considered for inclusion. Projects that did not meet these criteria were eliminated from consideration. Furthermore, as stated in the master plan principles, the State will strive to use sediment from renewable sources, such as the Mississippi River, or from outside the coastal system, such as the Gulf of Mexico, for marsh creation and barrier headland/island projects.
- **Duplicative Effects:** Many project concepts have overlapping scopes, goals and physical locations. New projects must be significantly different than any project analyzed through the 2012 Coastal Master Plan process, including those that were not selected for inclusion in the final plan.

Overall, CPRA received 155 project ideas from 42 project sponsors (Table 5). Using the screening criteria above, 52 submissions were considered for inclusion in the 2017 Coastal Master Plan. From these 52 submissions, projects were accepted in full, combined with other submittals, or modified to better reflect CPRA project types. Small-scale hydrologic restoration projects with limited scope and interior oyster reef restoration projects were excluded from the screening criteria described above because they will be part of a programmatic measure to be outlined in the 2017 Coastal Master Plan.

In addition to the New Project Development Program, CPRA considered Coastal Wetlands Planning, Protection and Restoration Act (CWPPRA) project nominees from PPL 19-24 (117 projects) and projects submitted under the Natural Resource Damage Assessment (NRDA) process in response to the Deepwater Horizon and other oil spills (501 projects). CWPPRA and NRDA projects were screened using the same criteria described above. From this screening, seven projects were identified for consideration in the 2017 Coastal Master Plan.

Lastly, as a result of new information from ongoing Mississippi River studies, Union Freshwater Diversion (001.DI.102), Ama Sediment Diversion (001.DI.101), and Upper Breton Diversion 75,000 cfs (001.DI.103) have been proposed and added to the list of candidate projects, totaling 60 new projects being considered in 2017 (Table 6; Figure 2).

### Step 3: Identify Candidate Projects from 2012 for Reconsideration

Based on feedback from the 2017 Coastal Master Plan's Framework Development Team as well as other stakeholders, CPRA was asked to reconsider a select number of projects that were evaluated for the 2012 Coastal Master Plan but not included in the final plan. CPRA developed a set of criteria to determine which projects could justifiably be reconsidered.

Because the 2012 Coastal Master Plan was based on an unprecedented technical analysis, including the reliance on predictive models and the Planning Tool, CPRA proposed that projects not in the 2012 Coastal Master Plan but selected by the Planning Tool based on modeled benefits under the \$50 billion, Max Land, 50/50 Restoration/Protection Funding Split be reconsidered for analysis. This category of projects was proposed because these projects were



the next highest performers based on the two main 2012 Coastal Master Plan decision drivers, risk reduction and/or land building.

In addition, CPRA further proposed reconsidering projects not in the 2012 Coastal Master Plan but selected by the Planning Tool using model output under the \$50 billion, Max Land, 60/40 Restoration/Protection Funding Split. This category of projects was proposed because these projects were the next highest performers if an extra \$5 billion was allocated towards restoration projects.

The list of projects in these two categories was then reviewed on a project-by-project basis to determine if there were any projects that overlapped or were duplicative with projects already being considered for 2017, if any projects were no longer feasible from an implementation perspective, or if there were any projects removed from the 2012 Coastal Master Plan based on project specific feedback. This resulted in five additional projects that will be reconsidered.

In addition to reconsidering high performing projects, CPRA proposed reconsidering projects evaluated as part of the 2012 Coastal Master Plan that were either on the critical landscape areas identified in the 2009 LACPR report (USACE 2009) or on the critical landforms included in the decision criteria used as part of the decision-making process for the 2012 Coastal Master Plan but not included in the final plan. Based on this step, one 2012 project increment, Lower Barataria Marsh Creation – Component A (002.MC.04a), will be reconsidered.

Lastly, CPRA established the Project Development and Implementation Program to work with local entities to develop new project alternatives for consideration. As such, CPRA has worked with the North Lafourche Levee District to develop alternate alignments to 002.HP.06 (Upper Barataria Risk Reduction) since that project was modeled and not selected as part of the 2012 Coastal Master Plan. The project alignment has been developed and is included in the list of 2017 candidate projects. In total, CPRA will reconsider 7 candidate projects from the 2012 Master Plan (Table 7).

## **Summary: 2017 Coastal Master Plan Candidate Projects**

Through the processes described above, 148 candidate projects have been identified for consideration in the 2017 Coastal Master Plan (Table 8): 81 from the 2012 Master Plan (Table 4), 60 through the New Project Development Program (Table 6), and seven being reconsidered from 2012 (Table 7).

## Figures and Tables

Table 1: 2012 Projects (or \*Project Increments) Moved to FWOA

Project ID	Project Name	FWOA Project (or Project Increments)
001.CO.01	South Lake Lery Marsh Creation	South Lake Lery Shoreline and Marsh Restoration (BS-0016)
001.HR.01	Amite River Diversion Canal	Hydrologic Restoration of the Amite River Diversion (PO-0142)
001.SP.01*	Manchac Landbridge Shoreline Protection	Lake Pontchartrain Shoreline Protection (PO-0052)
002.BH.04*	Barataria Pass to Sandy Point Barrier Island Restoration	Shell Island West (BA-0111)
002.BH.05*	Belle Pass to Caminada Pass Barrier Island Restoration	Caminada Headland Beach and Dune Restoration (BA-0143)
002.CO.01	Grand Liard Marsh/Ridge Restoration	Grand Liard Marsh and Ridge Restoration (BA-0068)
002.HP.07*	Lafitte Ring Levee	Rosethorn Tidal Protection (BA-0075-2)
002.HP.08	Maintain West Bank Levees	West Bank and Vicinity (BA-0066)
002.MC.05e*	Large-Scale Barataria Marsh Creation - Component E	Mississippi River Sediment Delivery System (BA-0039); Long Distance Mississippi River Sediment Pipeline (BA-0043-EB); Bayou Dupont Marsh and Ridge Restoration (BA-0048)
03a.BH.03*	Isles Dernieres Barrier Island Restoration	Caillou Lake Headlands (TE-0100)
03a.DI.01*	Bayou Lafourche Diversion	Mississippi River Water Reintroduction into Bayou Lafourche (BA-0161)
03a.HP.02b*	Morganza to the Gulf	Morganza to the Gulf (TE-0064)
03a.HR.10	HNC Lock Hydrologic Restoration	Houma Navigation Canal Lock Complex (TE-0113)
03b.CO.01	North Lost Lake Marsh Creation	Lost Lake Marsh Creation and Hydrologic Restoration (TE-0072)
004.BS.01*	Grand Lake Bank Stabilization	Grand Lake Shoreline Protection (ME-0021-EB)
004.HR.18	Mermentau Basin Hydrologic Restoration (East of Calcasieu Lake)	West Big Burn Bridge Restoration (ME-0026)
004.MC.01*	South Grand Chenier Marsh Creation	South Grand Chenier Marsh Creation Project (ME-0020)
004.MC.04*	Mud Lake Marsh Creation	Oyster Bayou Marsh Creation and Terracing (CS-0059)
004.SP.08 <sup>5</sup>	Calcasieu – Sabine Shoreline Protection – Component A	Cameron Parish Shoreline (CS-0033)

<sup>5</sup> Project identified as Calcasieu – Sabine Shoreline Protection – Component A (004.BS.04a) in the 2012 Coastal Master Plan.

Table 2: 2012 Projects Removed from 2017 Consideration

Project ID	Project Name	Reason for Removal
03a.HR.04	Chacahoula Basin Hydrologic Restoration	Existing hydraulic connectivity exceeds what was proposed for the project
03b.HP.11	Berwick to Wax Lake	Results of South Central Coastal Louisiana Flood Protection study
03b.MC.05	Terrebonne GIWW Marsh Creation	Results of Increase Atchafalaya to Terrebonne feasibility study
03b.RC.01	Bayou Sale Ridge Restoration	Constructability issues/concerns
03b.OR.02	West Cote Blanche Bay Oyster Reef Restoration	Constructability issues/concerns
03b.OR.03	East Cote Blanche Bay Oyster Reef Restoration	Constructability issues/concerns
004.BS.03	GIWW Bank Stabilization (Freshwater Bayou to Calcasieu Ship Channel)	CPRA policy that bankline stabilization on federally navigable waterways is a federal responsibility
004.BS.06	Calcasieu Ship Channel Bank Stabilization (Gulf to Calcasieu Lake)	CPRA policy that bankline stabilization on federally navigable waterways is a federal responsibility
004.HR.07	Little Pecan Bayou Sill	Results of Southwest Coastal Louisiana Study
004.HR.08	Sabine Pass Hydrologic Restoration	Results of Southwest Coastal Louisiana Study
004.HR.12	Tom's Bayou Hydrologic Restoration	Results of Southwest Coastal Louisiana Study
004.HR.13	Deep Lake Hydrologic Restoration	Results of Southwest Coastal Louisiana Study
004.HR.14	Alkali Ditch Hydrologic Restoration	Results of Southwest Coastal Louisiana Study
004.HR.17	Oyster Bayou Hydrologic Restoration	Results of Southwest Coastal Louisiana Study
004.HR.19	Mermentau Basin Hydrologic Restoration (South of Grand Lake)	Results of Southwest Coastal Louisiana Study
004.HR.20	Mermentau Basin Hydrologic Restoration (South of White Lake)	Results of Southwest Coastal Louisiana Study
004.HR.22	East Calcasieu Lake Hydrologic Restoration	Results of Southwest Coastal Louisiana Study
004.RC.04	Hackberry Ridge Restoration	Existing elevations equal to or greater than proposed project elevations

Table 3: 2012 Projects with Revised Footprints

Project ID	Project Name	Reason for Revision
001.HP.05	West Shore Lake Pontchartrain	New alignment identified in USACE West Shore Lake Pontchartrain Study
001.DI.17	Upper Breton Diversion	Results of recent modeling analysis conducted for the Mississippi River

2017 Coastal Master Plan: Developing the List of Candidate Projects

Project ID	Project Name	Reason for Revision
001.DI.29	West Maurepas Diversion	Separation of 001.DI.29 into two projects based on new information gained since 2012
03a.HP.02b	Morganza to the Gulf	New alignment identified in USACE Post Authorization Report for Morganza to the Gulf
03a.HR.02	Central Terrebonne Hydrologic Restoration	Revised project features based on CWPPRA Phase I analysis
03a.MC.07	Belle Pass to Golden Meadow	Parish input
03b.HP.10	Morgan City Back Levee	Results of South Central Coastal Louisiana Flood Protection study
03b.HP.12	Franklin and Vicinity	Results of South Central Coastal Louisiana Flood Protection study
03b.HP.13	Bayou Chene Floodgate	Results of St. Mary Levee District Preliminary Report
03b.HP.14	St. Mary/Iberia Upland Levee	Results of South Central Coastal Louisiana Flood Protection Study
004.HP.15	Abbeville and Vicinity	Results of South Central Coastal Louisiana Flood Protection study
004.HR.06	Calcasieu Ship Channel Salinity Control Measures	Results of Calcasieu Ship Channel Salinity Control Measures Project Planning and Feasibility Decision Report

Table 4: 2012 Master Plan Projects Being Considered<sup>6</sup>

Project ID	Project Name
001.DI.02	Lower Breton Diversion
001.DI.17	Upper Breton Diversion (250,000 cfs)
001.DI.18	Central Wetlands Diversion
001.DI.21	East Maurepas Diversion
001.DI.23	Mid-Breton Sound Diversion
001.DI.29	West Maurepas Diversion
001.HP.04	Greater New Orleans High Level
001.HP.05	West Shore Lake Pontchartrain
001.HP.08p	Lake Pontchartrain Barrier
001.HP.13	Slidell Ring Levees
001.MC.02	Hopedale Marsh Creation
001.MC.05	New Orleans East Landbridge Restoration

<sup>6</sup> Lake Charles Protection (004.HP.06p) is being considered programmatically. CPRA will continue to coordinate with this community to identify the flood risk reduction measures that best address current and future flooding risks. Terrebonne Bay Rim Marsh Creation Study (03a.MC.09p) is being considered programmatically. CPRA will continue to explore options to provide sustainable, constructible restoration of Terrebonne Bay rim.

2017 Coastal Master Plan: Developing the List of Candidate Projects

Project ID	Project Name
001.MC.07a	Lake Borgne Marsh Creation - Component A
001.MC.08a	Central Wetlands Marsh Creation - Component A
001.MC.09	Biloxi Marsh Creation
001.MC.13	Golden Triangle Marsh Creation
001.OR.01a	Biloxi Marsh Oyster Reef
001.RC.01	Bayou LaLoutre Ridge Restoration
001.SP.01	Manchac Landbridge Shoreline Protection
001.SP.03	Eastern Lake Borgne Shoreline Protection
001.SP.04	MRGO Shoreline Protection
001.SP.05 <sup>7</sup>	East New Orleans Landbridge Shoreline Protection
002.BH.04	Barataria Pass to Sandy Point Barrier Island Restoration
002.BH.05	Belle Pass to Caminada Pass Barrier Island Restoration
002.DI.03	Mid-Barataria Diversion (1st Period Increment)
002.DI.03a	Mid-Barataria Diversion (2nd Period Increment)
002.DI.15	Lower Barataria Diversion
002.HP.07	Lafitte Ring Levee
002.MC.05e	Large-Scale Barataria Marsh Creation - Component E
002.MC.07	Barataria Bay Rim Marsh Creation
002.RC.01	Bayou Long Ridge Restoration
002.RC.02	Spanish Pass Ridge Restoration
03a.BH.03	Isles Dernieres Barrier Island Restoration
03a.BH.04	Timbalier Islands Barrier Island Restoration
03a.DI.01	Bayou Lafourche Diversion
03a.DI.05	Atchafalaya River Diversion
03a.HP.02b	Morganza to the Gulf (high)
03a.HP.20	Larose to Golden Meadow
03a.HR.02	Central Terrebonne Hydrologic Restoration
03a.MC.07	Belle Pass-Golden Meadow Marsh Creation
03a.MC.09b	North Terrebonne Bay Marsh Creation - Component B
03a.RC.01	Bayou DeCade Ridge Restoration
03a.RC.02	Bayou DuLarge Ridge Restoration
03a.RC.03	Small Bayou LaPointe Ridge Restoration
03a.RC.04	Mauvais Bois Ridge Restoration
03a.RC.05	Bayou Terrebonne Ridge Restoration
03a.RC.06	Bayou Pointe au Chene Ridge Restoration
03b.DI.04	Increase Atchafalaya Flow to Terrebonne
03b.HP.08	Amelia Levee Improvements (3E)

<sup>7</sup> Project identified as East New Orleans Landbridge Shoreline Protection (001.CO.03) in the 2012 Coastal Master Plan.

2017 Coastal Master Plan: Developing the List of Candidate Projects

<b>Project ID</b>	<b>Project Name</b>
03b.HP.10	Morgan City Back Levee
03b.HP.12	Franklin and Vicinity
03b.HP.13	Bayou Chene Floodgate
03b.HP.14	St. Mary/Iberia Upland Levee
03b.MC.07	East Rainey Marsh Creation
03b.SP.01	Freshwater Bayou Shoreline Protection (Belle Isle Canal to Lock)
03b.SP.05	Gulf Shoreline Protection (Freshwater Bayou to Southwest Pass)
03b.SP.06a	Vermilion Bay and West Cote Blanche Bay Shoreline Protection (Critical Areas)
03b.SP.08	Southwest Pass Shoreline Protection (West Side)
004.BS.01	Grand Lake Bank Stabilization
004.BS.02	West Cove Bank Stabilization
004.BS.05	Sabine Lake Bank Stabilization
004.HP.15	Abbeville and Vicinity
004.HR.06	Calcasieu Ship Channel Salinity Control Measures
004.MC.01	South Grand Chenier Marsh Creation
004.MC.04	Mud Lake Marsh Creation
004.MC.07	West Rainey Marsh Creation
004.MC.10	Southeast Calcasieu Lake Marsh Creation
004.MC.13	Cameron Meadows Marsh Creation
004.MC.16	East Pecan Island Marsh Creation
004.MC.19	East Calcasieu Lake Marsh Creation
004.MC.23	Calcasieu Ship Channel Marsh Creation
004.MC.25	Kelso Bayou Marsh Creation
004.RC.01	Grand Chenier Ridge Restoration
004.RC.02	Cheniere au Tigre Ridge Restoration
004.RC.03	Pecan Island Ridge Restoration
004.RC.05	Front Ridge Restoration
004.SP.02	Schooner Bayou Canal Shoreline Protection
004.SP.03	Freshwater Bayou Canal Shoreline Protection
004.SP.05a	Gulf Shoreline Protection (Calcasieu River to Rockefeller)
004.SP.07	Northeast White Lake Shoreline Protection
004.SP.08	Calcasieu-Sabine Shoreline Protection - Component A

Table 5: 2017 Coastal Master Plan New Project Development Program Submissions

Project Title	Project Type	Decision <sup>8</sup>	Screening Criteria <sup>9</sup>
Adams Bay Headland Restoration	RR; MC	Partial	
AGMAC Marsh Creation Project from Beneficial Use of Dredged Material	MC	Partial	
Armoring of the Tidal Levee in Delacroix Island, St. Bernard Parish	SFP	No	4
Avoca Island Diversion	HR	N/A	
Barataria/Terrebonne Basin Marsh Terracing Program	OT	No	4
Bay Densse Outfall Management	OT	No	4
Bayou Aux Chenes Ridge Restoration	RR; MC	Partial	
Bayou Cane Marsh Creation	MC	Yes	
Bayou Decade Marsh Creation	MC	No	5
Bayou Dularge Marsh Creation	MC; SP	No	5

<sup>8</sup> **Decision:** For each submittal, a decision was made on whether the project would be evaluated as part of the 2017 Coastal Master Plan. The decision options are described below.

**N/A:** Refers to Hydrologic Restoration or Oyster Reef projects that meet master plan goals and objectives and fall under the new programmatic measure program to be outlined in the 2017 Master Plan or nonstructural projects which are being developed separately.

**No:** Submittal will not be modeled. The reason for the decision is provided in the Screening Criteria column.

**Partial:** Refers to submittals that were partially accepted (i.e., multiple project types were submitted but only one project type was accepted), or projects that were modified to better correspond with master plan principles and objectives.

**Subsumed:** Refers to projects that overlapped another 2017 submittal. Projects (or parts of projects) listed as subsumed were ultimately approved for consideration.

**Yes:** Project will be evaluated.

<sup>9</sup> **Screening Criteria:** Criteria for which projects were screened out of consideration:

1. Size Threshold
2. Geographic Area
3. Adequate Information
4. Consistency with Master Plan objectives and principles
5. Duplicative Effects

2017 Coastal Master Plan: Developing the List of Candidate Projects

Project Title	Project Type	Decision <sup>8</sup>	Screening Criteria <sup>9</sup>
Bayou Eau Noir Ridge Restoration	RR; MC	Partial	
Bayou La Loutre Ridge Restoration Project	RR	No	5
Bayou Lacombe Marsh Creation	MC	Yes	
Bayou Lafourche East Bank	MC	No	5
Bayou L'Ours Restoration	HR; MC	No	4
Bayou Penchant Marsh Creation	MC	No	5
Bayou Sauveur Marsh Creation Land Bridge	MC	Subsumed	
Bayou Terre aux Boeufs Ridge Restoration Project	RR	Yes	
Bayou Terrebonne Freshwater Diversion into Grand Montegut and PAC/DU Wetlands	HR	N/A	
Bayou Terrebonne to Isle St. Jean Charles Land Bridge	MC	No	5
Bell Island Marsh Creation	MC	No	4
Belle Pass to Golden Meadow Marsh Creation	MC	Subsumed	
Big Branch Marsh Restoration	MC	Subsumed	
Biloxi Marsh Creation	MC	No	5
Biloxi Marsh Subtidal and Fringe Oyster Reefs	OR	Partial	
Bully Camp Marsh Creation	MC	No	5
Caernarvon Freshwater Distribution - East	HR	No	4
Caillou Lake - Lake Mechant Marsh Creation	MC	No	5
Calcasieu Lake East and West Fringe Oyster Reefs	OR	N/A	
Calcasieu Lake West Bank	MC	Yes	
Cameron Meadows Marsh Creation, Phase II	MC	Subsumed	
Cameron Parish Comprehensive Plan	HR; MC; RR; SP	Partial	
Carlisle Ridge Restoration	RR; MC	Partial	
Channel Restrictions at Bayou Dupont, Harvey Cut, Bayou Perot and Barataria Waterway	HR	N/A	
Controllable Coastline Creation via Positive Displacement Sediment Pumping	MC	No	4
Cote Blanche Freshwater & Sediment Introduction & Shoreline Protection Project	HR; SP	N/A	
Design and Construction of Braithwaite to White Ditch back levee	SFP	No	5



2017 Coastal Master Plan: Developing the List of Candidate Projects

Project Title	Project Type	Decision <sup>8</sup>	Screening Criteria <sup>9</sup>
Design and Construction of Fort Jackson to Venice back levee (HSDRRS NOV-08)	SFP	Yes	
Design and Construction of Oakville to La Reussite back levee (HSDRRS NOV-NFL-04a) and MRL Oakville to La Reussite (MRL-WB-179)	SFP	Yes	
Design and Construction of Phoenix to Bohemia back levee (HSDRRS Nov - 01)	SFP	No	5
Design and Construction of St. Jude to City Price back levee (NOV-05a) and MRL St. Jude to City Price (NOV 09)	SFP	Yes	
Drum Island Marsh Creation	MC	No	4
Dulac - Cocodrie Marsh Creation	MC	No	5
East Bank Land Bridge (Alternative A) Marsh Creation	MC	Subsumed	
East Bank Land Bridge (Alternative B) Marsh Creation	MC	Yes	
East Bank Land Bridge (Alternative C) Marsh Creation	MC	Subsumed	
East Bank Land Bridge (Alternative D) Marsh Creation	MC	Subsumed	
East Bank Oyster Barrier Reef	OR	N/A	
East Golden Meadow Marsh Creation	MC	No	5
East Maurepas Swamp Diversion Project	SD	Yes	
East St. Tammany Storm Surge Structural Protection Project	OT	No	4
Eastern Lake Borgne Shoreline Protection	SP	No	5
Eloi Bay Subtidal and Fringe Oyster Reefs	OR	N/A	
Expansion of Large-Scale Barataria Marsh Creation Component E (002.MC.05e)	MC	Yes	
Faciane Canal Marsh Creation	MC	Yes	
Falgout Canal Marsh Creation	MC	Subsumed	
Fifi Island Restoration Project	MC; SP	Partial	
Freshwater Diversion from GIWW down Grand Bayou in Lafourche Parish	HR	Subsumed	
Fritchie North Marsh Creation	MC	Yes	
Geologic Framework Preservation Through Innovative Reef Building	OR	N/A	
Golden Meadow - Montegut Marsh Creation	MC	No	5
Grand Bayou Freshwater Enhancement	HR; MC	Subsumed	
Grand Bayou Freshwater Reintroduction	HR; MC	Partial	

2017 Coastal Master Plan: Developing the List of Candidate Projects

Project Title	Project Type	Decision <sup>8</sup>	Screening Criteria <sup>9</sup>
Grand Bayou Ridge Restoration	RR; MC	Partial	
Grand Chenier Subtidal Oyster Reefs	OR	N/A	
Grand Lake Shoreline Marsh Creation	MC	Subsumed	
Gulf Future Coalition non-structural adaptation and community resiliency	OT	N/A	
Guste Island Marsh Creation	MC	Yes	
HNC - Lake Mechant Marsh Creation	MC	No	5
Iron Banks Marsh Creation	MC	No	4
Jesuit Bend Marsh Creation Site	MC	No	4
LaBranche Wetlands Freshwater & Sediment Diversion Project	HR	Yes	
LaBranche Wetlands Shoreline Protection	SP	Partial	
Lake Hermitage Shoreline Protection	SP	Yes	
Lake Hermitage South Marsh Creation	MC	No	5
Lake Salvador Shoreline Protection	SP	Yes	
Large Scale Barataria - Barataria Bay Rim Marsh Creation	MC	Partial	
Leeville Area Bank Stabilization along the Southeast and Southwest Canals	BS	Yes	
Leeville Ridge Restoration and Marsh Creation	RR	No	3
Marsh Creation Through Beneficial Use of Dredged Material from Baptiste Collette Bayou Navigation Channel Deepening	MC	No	2
Marsh Creation via Atchafalaya Long Distance Sediment Pipeline	SD; MC	Partial	
Mermentau Marsh Restoration	SP; OT	No	5
Mid Breton Marsh Creation Land Bridge	MC	No	5
Mid-Barataria Oyster Breakwater & Brood Stock Sanctuary - Pilot Project	OR	N/A	
Mississippi River Long Distance Sediment Pipeline - West of Barataria Waterway	MC; RR	No	4
MRGO Shoreline Protection	SP	No	5
MSR East Bank	MC	No	5
MSR West Bank South	MC	No	5
New Orleans East Land Bridge Marsh Creation	MC	Subsumed	
North East Tangipahoa Shoreline Protection	SP	Yes	

2017 Coastal Master Plan: Developing the List of Candidate Projects

Project Title	Project Type	Decision <sup>8</sup>	Screening Criteria <sup>9</sup>
North Goose Point Marsh Restoration	MC	Subsumed	
North Lake Boudreaux Marsh Creation and Shoreline Protection Project	MC; SP	Partial	
North Lost Lake Marsh Creation and Hydrologic Restoration Project	MC; HR	No	5
North Terrebonne Bay Marsh Creation	MC	No	5
Overbank Spillway (s) into Upper Barataria Coastal Forests	OT	No	5
Overbank Spillway (s) into Upper Pontchartrain Coastal Forest	OT	No	5
Oysterville Project	OR	N/A	
Pass-A-Loutre Hydrologic Restoration and Marsh Creation Project	HR; MC	No	2
Pelto Bay to Point Au Fer Subtidal and Fringe Oyster Reefs	OR	N/A	
Point a la Hache Marsh Creation (Central)	MC	Yes	
Point a la Hache Marsh Creation (North)	MC	Yes	
Point a la Hache Marsh Creation (South)	MC	Yes	
Pointe a la Hache Ridge Restoration	RR; MC	No	5
Proposal for the Use of Harvested Water Hyacinth in Burlap "Geomembranes" for Creation of Silt Barriers in Louisiana Wetlands	OT	No	4
Protecting our marsh restoration projects and natural marshes through feral hog removal	OT	No	4
Protecting our marsh restoration projects and natural marshes through invasive plant species control	OT	No	4
Red Pass Ridge Restoration	RR; MC	Partial	
Restoration of Chandeleur Barrier Island Complex	BI	No	5
Ridge Restoration Modification Project	RR	No	4
Sabine Marsh Creation Browns Lake Area	MC	No	1;5
SCA Gulf Restoration Corps Marsh Creation Project	SD	No	2
Sediment and Freshwater Diversions Using Very Large Spillways and Above Ground Reservoirs	SD	No	4
Sediment Diversion Efficiency Along the Atchafalaya and Mississippi Rivers	HR	N/A	
Sediment Enhancement and Management of the Caernarvon Diversion	SD; MC; HR	No	4
Shoreline Protection along Lake Salvador (south side of Couba Island)	SP	Yes	

2017 Coastal Master Plan: Developing the List of Candidate Projects

Project Title	Project Type	Decision <sup>8</sup>	Screening Criteria <sup>9</sup>
Shoreline Protection along the Gulf and Bay Shoreline from Oyster Bayou to Grand Pass des Illettes	SP	No	5
Shoreline Protection at Lost Lake - Southern Rim	SP	Yes	
Shoreline Protection East Marsh Island	SP	Yes	
Shoreline Protection in East Cote Blanche Bay, West Cote Blanche, and Vermilion Bay	SP	No	5
Small Bayou LaPointe Marsh Creation	MC	Subsumed	
South Avoca Island Freshwater Diversion (5,000 cfs)	SD	No	5
South East Tangipahoa Shoreline Protection	SP	No	5
South Lake Salvador Landbridge Restoration	MC; SP	Partial	
South Sabine Refuge Pool 3 Marsh Restoration	MC	Subsumed	
Southeast LaBranche Wetland Creation and Nourishment Project	MC	No	5
Southeast Marsh Island Restoration Project	MC	Yes	
Southwest Barataria Subtidal and Fringe Oyster Reefs	OR	N/A	
Southwest Pecan Island Marsh Restoration	MC	No	5
Spanish Lake Shoreline Marsh Creation	MC	Yes	
St. Bernard Bioengineered Reef Zones	OR	N/A	
St. Tammany Parish Elevation	OT	N/A	
Strategic Stabilization Barrier	SP	Partial	
Sulphur Mine Land Bridge Restoration Project	MC	No	5
Sunrise Point Marsh Creation	MC	Yes	
Telegraph Point/Pelican Island Marsh Creation	MC	No	4
Terrebonne Bay Rim Subtidal and Fringe Oyster Reef Restoration	OR	N/A	
Third Delta Conveyance Channel	SD	No	5
Tiger Ridge/Maple Knoll Area Marsh Creation	MC	Yes	
Triple Pass Island Marsh Creation	MC	No	4
Twin Pipeline Canal Marsh Creation and Ridge Restoration	RR; MC	No	4;5
Twin Pipelines Land Bridge	MC	No	5
Uhlan Bay Marsh Creation	MC	Yes	

2017 Coastal Master Plan: Developing the List of Candidate Projects

Project Title	Project Type	Decision <sup>8</sup>	Screening Criteria <sup>9</sup>
Vermilion Bay Marsh Creation	MC; SP	Partial	
Wax Lake Outlet Enrichment Project	SD; MC	No	2
West Bank Barrier Island Expansion	BI	No	5
West Bank Oyster Barrier Reef	OR	N/A	
West Belle Pass Marsh Creation	MC	No	1;5
West Brown Lake Marsh Restoration	MC	Yes	
West Cameron Restoration Proposal	HR; MC	Subsumed	
West Lac Des Allemands Shoreline Protection Project Phase II	SP	Yes	
West Point a la Hache and Naomi Siphon Enhancement	HR	No	4
West St. Tammany Shoreline Protection	SP	Yes	
Western Sabine Refuge Marsh Restoration	MC	Yes	
White Lake Marsh Creation	MC; SP	Yes	
Wild Horse Ridge Protection Project	BS; MC	No	5

Table 6: New Projects Being Considered Based on New Project Development Program (includes CWPPRA, NRDA, and CPRA projects)

<b>Project ID</b>	<b>Project Name</b>
001.DI.100	Manchac Landbridge Diversion
001.DI.101	Ama Sediment Diversion
001.DI.102	Union Freshwater Diversion
001.DI.103	Upper Breton Diversion (75,000 cfs)
001.HR.100	LaBranche Hydrologic Restoration
001.MC.100	Sunrise Point Marsh Creation
001.MC.101	Uhlan Bay Marsh Creation
001.MC.102	Pointe a la Hache Marsh Creation
001.MC.103	Fritchie North Marsh Creation
001.MC.104	East Bank Land Bridge Marsh Creation
001.MC.105	Spanish Lake Marsh Creation
001.MC.106	St. Tammany Marsh Creation
001.MC.107	Tiger Ridge/Maple Knoll Marsh Creation
001.MC.108	Guste Island Marsh Creation
001.OR.100	North Biloxi Marsh Oyster Reef
001.RC.100	Bayou Terre aux Boeufs Ridge Restoration
001.RC.102	Bayou Aux Chenes Ridge Restoration
001.RC.103	Carlisle Ridge Restoration
001.SP.100	Breton Sound Shoreline Protection
001.SP.101	Unknown Pass to Rigolets Shoreline Protection
001.SP.102	North Lake Pontchartrain Shoreline Protection
001.SP.103	Northeast Lake Pontchartrain Shoreline Protection
001.SP.104	LaBranche Wetlands Shoreline Protection
002.HP.100	Fort Jackson to Venice
002.HP.101	St Jude to City Price
002.HP.102	Oakville to La Reussite
002.MC.100	North Barataria Bay Marsh Creation
002.RC.100	Red Pass Ridge Restoration
002.RC.101	Adams Bay Ridge Restoration
002.RC.102	Bayou Eau Noire Ridge Restoration
002.RC.103	Grand Bayou Ridge Restoration
002.SP.100	Lake Hermitage Shoreline Protection
002.SP.101	Fifi Island Shoreline Protection
002.SP.102	East Snail Bay Shoreline Protection
002.SP.103	West Snail Bay Shoreline Protection
002.SP.104	South Little Lake Shoreline Protection
002.SP.105	North Little Lake Shoreline Protection
002.SP.106	Bayou Perot Shoreline Protection

<b>Project ID</b>	<b>Project Name</b>
002.SP.107	South Lake Salvador Shoreline Protection
002.SP.108	Lake Salvador Shoreline Protection
002.SP.109	Lac Des Allemands Shoreline Protection
03a.BS.100	Leeville Bank Stabilization
03a.HR.100	Grand Bayou Hydrologic Restoration
03a.MC.100	South Terrebonne Marsh Creation
03a.MC.101	North Lake Mechant Marsh Creation
03a.SP.100	North Lake Boudreaux Shoreline Protection
03b.MC.100	Vermillion Bay Marsh Creation
03b.MC.101	Southeast Marsh Island Marsh Creation
03b.SP.100	Lost Lake Shoreline Protection
03b.SP.101	Southeast Marsh Island Shoreline Protection
004.MC.100	Freshwater Bayou North Marsh Creation
004.MC.101	Freshwater Bayou South Marsh Creation
004.MC.102	White Lake Marsh Creation
004.MC.103	Little Chenier Marsh Creation
004.MC.104	Calcasieu Lake West Bank Marsh Creation
004.MC.105	West Brown Lake Marsh Creation
004.MC.106	Cameron Meadows and Vicinity Marsh Creation
004.MC.107	West Sabine Refuge Marsh Creation
004.SP.100	White Lake Shoreline Protection
004.SP.102	Sabine Pass Shoreline Protection

Table 7: Candidate Projects from 2012 for Reconsideration

<b>Project ID</b>	<b>Project Name</b>	<b>Reason for Reconsideration</b>
001.MC.06a	Breton Marsh Creation - Component A	Max Land 50/50 next highest performer
001.MC.17	Eastern Lake Borgne Marsh Creation	Max Land 50/50 next highest performer
002.HP.06	Upper Barataria Risk Reduction	Alternate alignment identified through the Project Development and Implementation Program
002.MC.04a	Lower Barataria Marsh Creation - Component A	Located on critical landform
002.MC.08	North Caminada Marsh Creation	Max Land 50/50 next highest performer
03b.MC.03	Marsh Island Marsh Creation	Max Land 60/40 next highest performer
03b.MC.09	Point Au Fer Island Marsh Creation	Max Land 50/50 next highest performer

Table 8: Final List of 2017 Candidate Projects

<b>Project ID</b>	<b>Project Name</b>
001.DI.02	Lower Breton Diversion
001.DI.17	Upper Breton Diversion
001.DI.18	Central Wetlands Diversion
001.DI.21	East Maurepas Diversion
001.DI.23	Mid-Breton Sound Diversion
001.DI.29	West Maurepas Diversion
001.DI.100	Manchac Landbridge Diversion
001.DI.101	Ama Sediment Diversion
001.DI.102	Union Freshwater Diversion
001.DI.103	Upper Breton Diversion
001.HP.04	Greater New Orleans High Level
001.HP.05	West Shore Lake Pontchartrain
001.HP.08p	Lake Pontchartrain Barrier
001.HP.13	Slidell Ring Levees
001.HR.100	LaBranche Hydrologic Restoration
001.MC.02	Hopedale Marsh Creation
001.MC.05	New Orleans East Landbridge Restoration
001.MC.06a	Breton Marsh Creation - Component A
001.MC.07a	Lake Borgne Marsh Creation - Component A
001.MC.08a	Central Wetlands Marsh Creation - Component A
001.MC.09	Biloxi Marsh Creation
001.MC.100	Sunrise Point Marsh Creation
001.MC.101	Uhlan Bay Marsh Creation
001.MC.102	Pointe a la Hache Marsh Creation
001.MC.103	Fritchie North Marsh Creation
001.MC.104	East Bank Land Bridge Marsh Creation
001.MC.105	Spanish Lake Marsh Creation
001.MC.106	St. Tammany Marsh Creation
001.MC.107	Tiger Ridge/Maple Knoll Marsh Creation
001.MC.108	Guste Island Marsh Creation
001.MC.13	Golden Triangle Marsh Creation
001.MC.17	Eastern Lake Borgne Marsh Creation
001.OR.01a	Biloxi Marsh Oyster Reef
001.OR.100	North Biloxi Marsh Oyster Reef
001.RC.01	Bayou LaLoutre Ridge Restoration
001.RC.100	Bayou Terre aux Boeufs Ridge Restoration
001.RC.102	Bayou Aux Chenes Ridge Restoration
001.RC.103	Carlisle Ridge Restoration
001.SP.01	Manchac Landbridge Shoreline Protection



2017 Coastal Master Plan: Developing the List of Candidate Projects

<b>Project ID</b>	<b>Project Name</b>
001.SP.03	Eastern Lake Borgne Shoreline Protection
001.SP.04	MRGO Shoreline Protection
001.SP.05	East New Orleans Landbridge Shoreline Protection
001.SP.100	Breton Sound Shoreline Protection
001.SP.101	Unknown Pass to Rigolets Shoreline Protection
001.SP.102	North Lake Pontchartrain Shoreline Protection
001.SP.103	Northeast Lake Pontchartrain Shoreline Protection
001.SP.104	LaBranche Wetlands Shoreline Protection
002.BH.04	Barataria Pass to Sandy Point Barrier Island Restoration
002.BH.05	Belle Pass to Caminada Pass Barrier Island Restoration
002.DI.03	Mid-Barataria Diversion (1st Period Increment)
002.DI.03a	Mid-Barataria Diversion (2nd Period Increment)
002.DI.15	Lower Barataria Diversion
002.HP.06	Upper Barataria Basin Risk Reduction
002.HP.07	Lafitte Ring Levee
002.HP.100	Fort Jackson to Venice
002.HP.101	St Jude to City Price
002.HP.102	Oakville to La Reussite
002.MC.04a	Lower Barataria Marsh Creation - Component A
002.MC.05e	Large-Scale Barataria Marsh Creation - Component E
002.MC.07	Barataria Bay Rim Marsh Creation
002.MC.08	North Caminada Marsh Creation
002.MC.100	North Barataria Bay Marsh Creation
002.RC.01	Bayou Long Ridge Restoration
002.RC.02	Spanish Pass Ridge Restoration
002.RC.100	Red Pass Ridge Restoration
002.RC.101	Adams Bay Ridge Restoration
002.RC.102	Bayou Eau Noire Ridge Restoration
002.RC.103	Grand Bayou Ridge Restoration
002.SP.100	Lake Hermitage Shoreline Protection
002.SP.101	Fifi Island Shoreline Protection
002.SP.102	East Snail Bay Shoreline Protection
002.SP.103	West Snail Bay Shoreline Protection
002.SP.104	South Little Lake Shoreline Protection
002.SP.105	North Little Lake Shoreline Protection
002.SP.106	Bayou Perot Shoreline Protection
002.SP.107	South Lake Salvador Shoreline Protection
002.SP.108	Lake Salvador Shoreline Protection
002.SP.109	Lac Des Allemands Shoreline Protection
03a.BH.03	Isles Dernieres Barrier Island Restoration

2017 Coastal Master Plan: Developing the List of Candidate Projects

<b>Project ID</b>	<b>Project Name</b>
03a.BH.04	Timbalier Islands Barrier Island Restoration
03a.BS.100	Leeville Bank Stabilization
03a.DI.01	Bayou Lafourche Diversion
03a.DI.05	Atchafalaya River Diversion
03a.HP.02b	Morganza to the Gulf (high)
03a.HP.20	Larose to Golden Meadow
03a.HR.02	Central Terrebonne Hydrologic Restoration
03a.HR.100	Grand Bayou Hydrologic Restoration
03a.MC.07	Belle Pass-Golden Meadow Marsh Creation
03a.MC.09b	North Terrebonne Bay Marsh Creation - Component B
03a.MC.100	South Terrebonne Marsh Creation
03a.MC.101	North Lake Mechant Marsh Creation
03a.RC.01	Bayou DeCade Ridge Restoration
03a.RC.02	Bayou DuLarge Ridge Restoration
03a.RC.03	Small Bayou LaPointe Ridge Restoration
03a.RC.04	Mauvais Bois Ridge Restoration
03a.RC.05	Bayou Terrebonne Ridge Restoration
03a.RC.06	Bayou Pointe au Chene Ridge Restoration
03a.SP.100	North Lake Boudreaux Shoreline Protection
03b.DI.04	Increase Atchafalaya Flow to Terrebonne
03b.HP.08	Amelia Levee Improvements (3E)
03b.HP.10	Morgan City Back Levee
03b.HP.12	Franklin and Vicinity
03b.HP.13	Bayou Chene Floodgate
03b.HP.14	St. Mary/Iberia Upland Levee
03b.MC.03	Marsh Island Marsh Creation
03b.MC.07	East Rainey Marsh Creation
03b.MC.09	Point Au Fer Island Marsh Creation
03b.MC.100	Vermilion Bay Marsh Creation
03b.MC.101	Southeast Marsh Island Marsh Creation
03b.SP.01	Freshwater Bayou Shoreline Protection (Belle Isle Canal to Lock)
03b.SP.05	Gulf Shoreline Protection (Freshwater Bayou to Southwest Pass)
03b.SP.06a	Vermilion Bay and West Cote Blanche Bay Shoreline Protection (Critical Areas)
03b.SP.08	Southwest Pass Shoreline Protection (West Side)
03b.SP.100	Lost Lake Shoreline Protection
03b.SP.101	Southeast Marsh Island Shoreline Protection
004.BS.01	Grand Lake Bank Stabilization
004.BS.02	West Cove Bank Stabilization
004.BS.05	Sabine Lake Bank Stabilization
004.HP.15	Abbeville and Vicinity

2017 Coastal Master Plan: Developing the List of Candidate Projects

<b>Project ID</b>	<b>Project Name</b>
004.HR.06	Calcasieu Ship Channel Salinity Control Measures
004.MC.01	South Grand Chenier Marsh Creation
004.MC.04	Mud Lake Marsh Creation
004.MC.07	West Rainey Marsh Creation
004.MC.10	Southeast Calcasieu Lake Marsh Creation
004.MC.100	Freshwater Bayou North Marsh Creation
004.MC.101	Freshwater Bayou South Marsh Creation
004.MC.102	White Lake Marsh Creation
004.MC.103	Little Chenier Marsh Creation
004.MC.104	Calcasieu Lake West Bank Marsh Creation
004.MC.105	West Brown Lake Marsh Creation
004.MC.106	Cameron Meadows and Vicinity Marsh Creation
004.MC.107	West Sabine Refuge Marsh Creation
004.MC.13	Cameron Meadows Marsh Creation
004.MC.16	East Pecan Island Marsh Creation
004.MC.19	East Calcasieu Lake Marsh Creation
004.MC.23	Calcasieu Ship Channel Marsh Creation
004.MC.25	Kelso Bayou Marsh Creation
004.RC.01	Grand Chenier Ridge Restoration
004.RC.02	Cheniere au Tigre Ridge Restoration
004.RC.03	Pecan Island Ridge Restoration
004.RC.05	Front Ridge Restoration
004.SP.02	Schooner Bayou Canal Shoreline Protection
004.SP.03	Freshwater Bayou Canal Shoreline Protection
004.SP.05a	Gulf Shoreline Protection (Calcasieu River to Rockefeller)
004.SP.07	Northeast White Lake Shoreline Protection
004.SP.08	Calcasieu-Sabine Shoreline Protection - Component A
004.SP.100	White Lake Shoreline Protection
004.SP.102	Sabine Pass Shoreline Protection

Figure 1: 2012 Coastal Master Plan Projects Being Considered for 2017

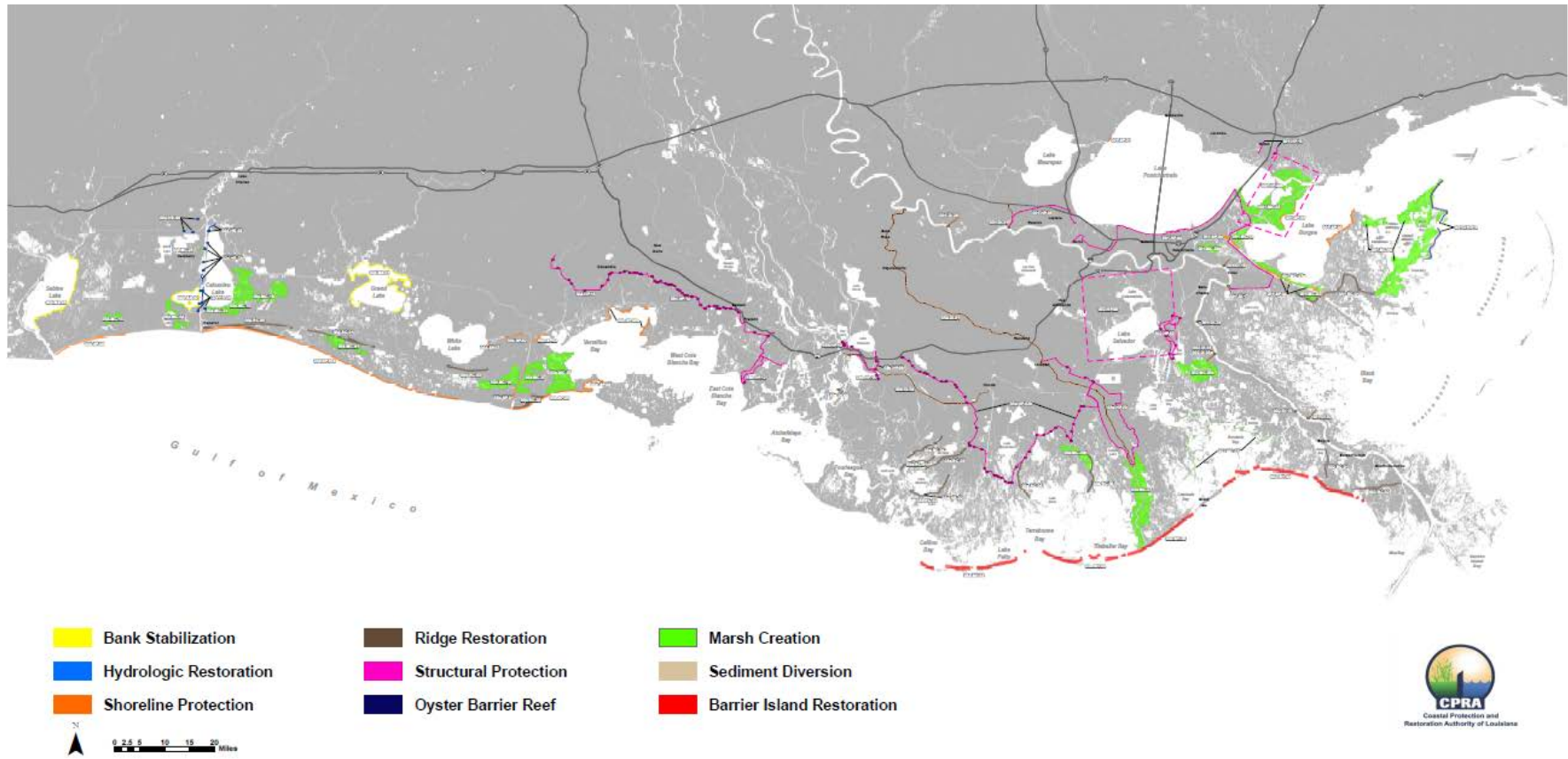
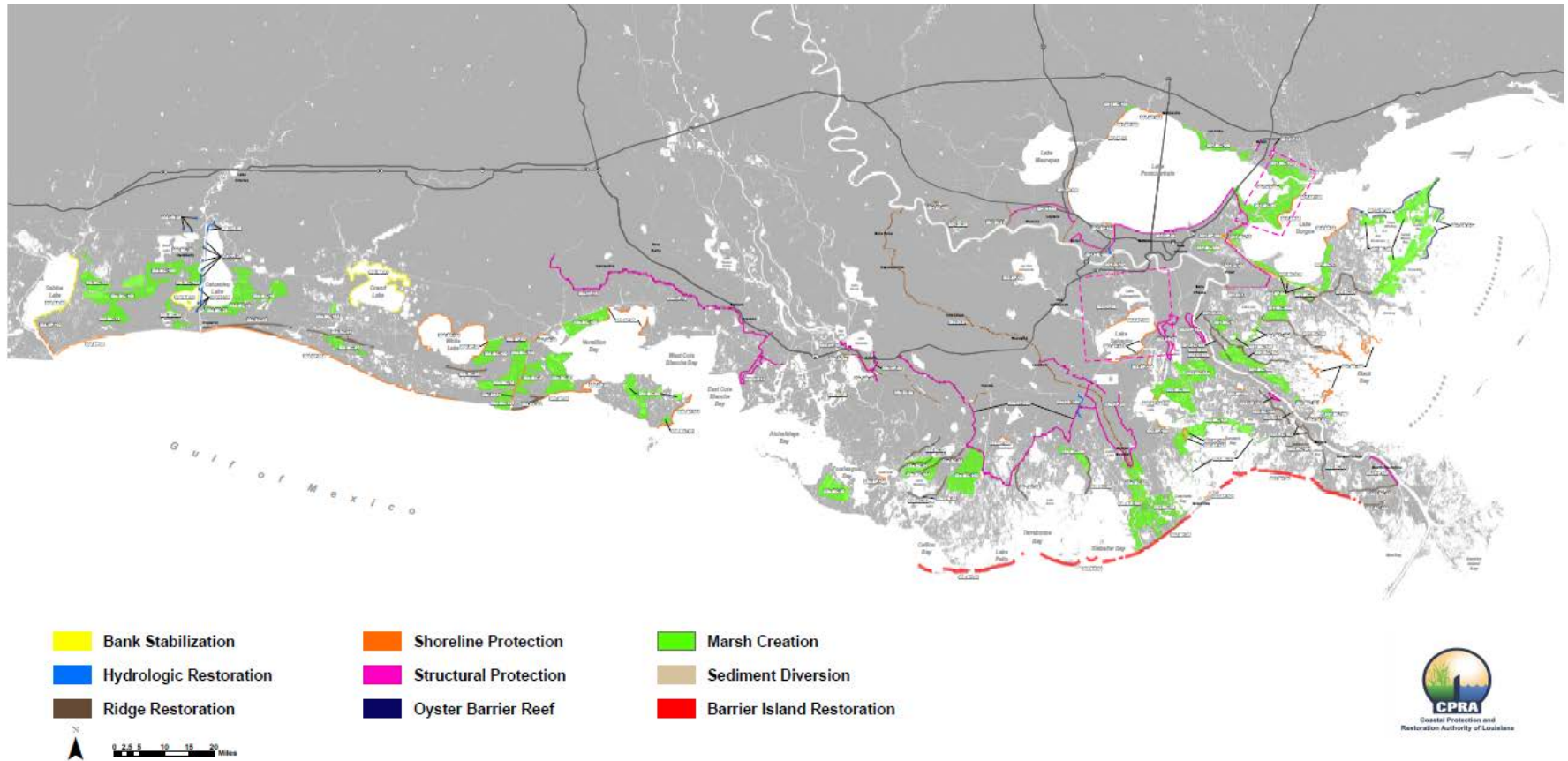




Figure 3: 2017 All Projects Being Considered<sup>10</sup>



<sup>10</sup> Map does not include the 48 Nonstructural Projects which will be considered in 2017 Coastal Master Plan

## References

- Coastal Protection and Restoration Authority (CPRA) 2015. Calcasieu Ship Channel Salinity Control Measures Project (004.HR.06) Planning and Feasibility Decision Document – Final. July 2015.
- Natural Resources Conservation Service (NRCS). Central Terrebonne Freshwater Enhancement Project (TE-66). Revised Phase I – Final Wetland Value Assessment. September 2014.
- U.S. Army Corps of Engineers (USACE). 2009. Louisiana Coastal Protection and Restoration (LACPR) Final Technical Report. June 2009.
- U.S. Army Corps of Engineers (USACE), 2013. Final Post Authorization Change Report: Morganza to the Gulf of Mexico, Louisiana. May 2013.
- U.S. Army Corps of Engineers (USACE). 2014. West Shore Lake Pontchartrain Hurricane and Storm Damage Risk Reduction Study Final Integrated Feasibility Report and Environmental Impact Statement. November 2014.
- U.S. Army Corps of Engineers (USACE), 2015. Southwest Coastal Louisiana Revised Integrated Draft Feasibility Report and Environmental Impact Statement. March 2015.