

FISCAL YEAR 2021 ANNUAL PLAN

INTEGRATED ECOSYSTEM RESTORATION AND HURRICANE
PROTECTION IN COASTAL LOUISIANA



FISCAL YEAR 2021 ANNUAL PLAN





LETTER FROM THE CHAIRMAN

The Water Campus
150 Terrace Avenue
Baton Rouge, LA 70802
(225) 342-7308
www.coastal.la.gov

Dear Louisiana,

The Coastal Protection and Restoration Authority's Fiscal Year 2021 Annual Plan signifies the arrival of a mature coastal program. This year will mark the 30th anniversary of the Coastal Wetlands Planning, Protection and Restoration Act (CWPPRA) program, a partnership with the federal government that has brought 210 restoration projects benefiting 100,000 acres since 1990. It is also the 15th anniversary of Hurricanes Katrina and Rita, disasters that forever changed coastal Louisiana and ushered in today's integrated approach to hurricane protection and ecosystem restoration and the Coastal Master Plan itself. Ten years ago, the *Deepwater Horizon* platform exploded in the Gulf of Mexico, killing 11 men and resulting in the largest environmental disaster in United States history. This disaster exacerbated wetland loss and habitat destruction and threatened multiple aspects of the coastal economy. Finally, this coming year will mark our third year of payments under Phase II of the Gulf of Mexico Energy Security Act (GOMESA). Our payments have grown over the past two years, and this year marks the first year Louisiana will receive its maximum payment.

Each of these disasters and funding programs has been dutifully translated into projects by CPRA that are successfully transforming Louisiana's coast. The Annual Plan is where we present our ambitions and vision to the public and Legislature for the coming fiscal year and the two following. This plan features projected expenditures of \$1.08 billion and \$1.15 billion in the coming and next fiscal years, and the projected outlook for FY23 included in this year's plan forecasts \$1.11 billion in investment in our coast. This year alone will see 120 active projects with 68 in construction. Within this set of 68 projects in construction is the West Shore Lake Pontchartrain Hurricane Protection project and the largest marsh and ridge restoration projects ever undertaken by this agency.

From Cameron Parish to the tip of the Bird's Foot Delta, CPRA will be on the ground improving coastal Louisiana. As the different anniversaries approach this year, Louisiana's coastal program will be in the spotlight here at home and nationally. Guided by the Coastal Master Plan and strengthened by partnerships at the federal and local level, we will proudly showcase our progress and demonstrate that Louisiana's coast is more than the site of daunting challenges, but an inspirational symbol of restoration and rebirth.

Sincerely,

Kyle R. "Chip" Kline, Jr.
Chairman of the Board, Coastal Protection and Restoration Authority

OUR BOARD

Kyle R. "Chip" Kline, Jr.

Chairman, CPRA

Dwayne Bourgeois

Regional Representative, Terrebonne Basin

Dr. Chuck Brown

Secretary, Department of Environmental Quality

Bill Bubrig

Regional Representative, Barataria Basin

Scott Burke

Regional Representative, Barataria Basin

Laurie Cormier

Regional Representative, Calcasieu and Sabine Basin

Jay Dardenne

Commissioner, Division of Administration
Barbara Goodson, Designee

Jim Donelon

Commissioner, Department of Insurance

Monica Gorman

Regional Representative, Pontchartrain Basin

Thomas Harris

Secretary, Department of Natural Resources
Keith Lovell, Designee

Senator Bob Hensgens

Designee of Senate President Page Cortez

Bill Hidalgo

Regional Representative, Atchafalaya Basin

Guy McInnis

Regional Representative, Breton Sound Basin

King Milling

Chairman, Governor's Advisory Commission on
Coastal Protection, Restoration and Conservation

Jack Montoucet

Secretary, Department of Wildlife and Fisheries

Billy Nungesser

Lieutenant Governor

Don Pierson

Secretary, Louisiana Economic Development
Patrick Witty, Designee

Kelly Richard

Regional Representative, Teche and Vermilion Basin

Dr. Mike Strain

Commissioner, Department of
Agriculture and Forestry
Brad Spicer, Designee

James Waskom

Director, Governor's Office of Homeland
Security and Emergency

Dr. Shawn Wilson

Secretary, Department of Transportation
and Development
Chris Knotts, Designee

Representative Jerome Zeringue

Designee of House Speaker Clay Schexnayder







Ad
m
i
n

COMMITTED TO
OUR COAST

HISTORY

Months after Hurricanes Katrina and Rita devastated the Gulf Coast in 2005, Louisiana formed the Coastal Protection and Restoration Authority (CPRA) as the single state entity tasked with setting priorities and overseeing efforts to achieve comprehensive coastal protection and restoration in Louisiana. Previously, recovery efforts were handled by various local and state governmental entities with limited budgets and little to no coordination – and our coast was paying the price.

In response, the Louisiana Legislature formed the institution we know today as CPRA and charged them with creating Louisiana's first-ever Comprehensive Master Plan for a Sustainable Coast. For the first time in Louisiana's history, a single state authority was driving coastal restoration and hurricane protection by marshaling the expertise and resources of the Department of Natural Resources, the Department of Transportation and Development, the Department of Wildlife and Fisheries, and other state agencies to speak with one clear voice for the future of Louisiana's coast.

Working with federal, state, and local political subdivisions, CPRA aims to establish a safe and sustainable coast that will protect our communities, the nation's critical energy infrastructure, and our bountiful natural resources for generations to come.

To that effect, CPRA is required by Act 523 of the 2009 Regular Legislative Session, to produce an Annual Plan that inventories projects, presents implementation schedules for these projects, and identifies funding schedules and budgets. This Fiscal Year (FY) 2021 Annual Plan provides an update on the state's efforts to protect and restore its coast and describes the short- and long-term results expected as progress is made.





Gulf Intracoastal Waterway West
Closure Complex, Plaquemines Parish
(Photo credit: USACE)



Queen Bess Island,
Jefferson Parish

MAJOR EVENTS

MAY 1, 1927

THE GREAT FLOOD OF 1927

The flooding of the lower Mississippi River Valley in 1927 is considered one of the worst natural disasters in the history of the United States. More than 23,000 square miles of land flooded, hundreds of thousands of people were displaced, and nearly 250 people died.

This catastrophic event emphasized the need for a governing agency to prioritize river control structures and, ultimately, for coordinated river management efforts that would come to fruition in the future.

MAY 15, 1928

FLOOD CONTROL ACT OF 1928

This act authorized the U.S. Army Corps of Engineers to design and construct projects to help control flooding of the Mississippi River and its tributaries, putting flood control on par with other major projects of its time through the largest public works appropriation ever authorized.

JANUARY 1, 1929

BONNET CARRE SPILLWAY

The U.S. Army Corps of Engineers built the Bonnet Carre Spillway between 1929 and 1931 as part of the federal Mississippi River and Tributaries Project, a flood-control program to replace the levee system constructed in the 18th and 19th centuries. The weirs were first opened in 1937. The structure is designed to divert water from the Mississippi River to Lake Pontchartrain.

SEPTEMBER 9, 1965

HURRICANE BETSY

Hurricane Betsy struck New Orleans and greater south Louisiana in 1965, leaving major flooding, loss of life, and property damage. The storm became the first billion-dollar hurricane, causing \$1.2 billion in damage. In response, Congress ordered the U.S. Army Corps of Engineers to build a massive flood-protection system for New Orleans, which failed 40 years later during Hurricane Katrina.

APRIL 1, 1990

CWPPRA "THE BREAUX ACT"

U.S. Sens. J. Bennett Johnston and John Breaux, of Louisiana, presented their case to save the state's vanishing wetlands in 1990, persuading Congress to enact the Coastal Wetlands Planning, Protection and Restoration Act (CWPPRA). Often referred to as "The Breaux Act," CWPPRA was the first federally mandated restoration effort to take place along Louisiana's coast and the first program to provide a stable source of federal funds dedicated to coastal restoration.

AUGUST/SEPTEMBER 2005

HURRICANES KATRINA AND RITA

Category 5 Hurricanes Katrina and Rita struck the Gulf Coast in 2005, resulting in more than 1,400 deaths in Louisiana, damaging more than 200,000 homes, displacing one million residents, and destroying 200 square miles of marsh. The hurricanes disrupted the national economy, spiking fuel prices, reducing energy reserves, and slowing global shipments.

The widespread impact of the storms highlighted the need to reform Louisiana's hurricane protection systems and restore the destroyed wetlands upon which the national economy depends. The federal government agreed to support recovery efforts in Louisiana following the hurricanes, but rather than deal with multiple agencies, federal officials requested the state create a central authority for oversight of all funds and coastal restoration activities, as well as a coordinated plan of action with clear, achievable goals.

DECEMBER 1, 2005

FORMATION OF THE COASTAL PROTECTION AND RESTORATION AUTHORITY

Meeting in a special session to address recovery issues following Hurricanes Katrina and Rita, the Louisiana Legislature restructured the state's Wetland Conservation and Restoration Authority to form the CPRA in December 2005.

APRIL 30, 2007

INITIAL COMPREHENSIVE MASTER PLAN FOR A SUSTAINABLE COAST

In its first-ever iteration of a defined plan for sustaining Louisiana's coast, CPRA outlined its strategy to coordinate small- and large-scale protection, restoration, and risk-reduction efforts coastwide. This initial plan, and all who played a role in its formation, laid the groundwork for a coordinated restoration effort, established focus and guidelines for planning, and set up a framework for project implementation that ensures we're putting the best projects for our state on the map. Iterations were unanimously approved by the Louisiana Legislature in 2012 and 2017, updated to reflect advancements in science and technology as well as newly available information, and the 2023 Coastal Master Plan is currently being developed.

APRIL 20, 2010

DEEPWATER HORIZON OIL SPILL

A catastrophic oil rig explosion in the Gulf of Mexico resulted in 134 million gallons of oil being released into the ocean, tragic death and injury of numerous crew members, and a wide range of adverse health effects to marine mammal, bird, fish, seafood, and other coastal wildlife populations, in addition to millions of dollars in damage to our ecosystems and economy. This event remains one of the worst environmental disasters in the history of the U.S.

APRIL 4, 2016

DEEPWATER HORIZON OIL SPILL SETTLEMENT

The U.S. District Court for the Eastern District of Louisiana approved a settlement agreement and consent decree allocating billions in funding for claims related to natural resource damages under the Oil Pollution Act, Clean Water Act civil penalties, and the state's various economic claims. This settlement, combined with prior *Deepwater Horizon* oil spill-related settlements and recoveries, totals approximately \$8.7 billion to be distributed in annual increments from 2017 to 2031 for Louisiana coastal restoration and economic damage rectification.

Because Louisiana's leaders established the Coastal Master Plan framework long before the oil spill, projects were already identified, planned, and, in some cases, designed – making them ready for implementation now that a funding source was available.



FUNDING

The Coastal Master Plan is implemented through yearly plans that outline the agency's priorities for the coming fiscal year and includes projections for an additional two years in the future. Projects are funded through an array of funding sources allocated to CPRA through various state and federal programs, agencies, initiatives, and organizations. Most funding sources have specific guidelines dictating how they can be used.

Several projects and initiatives have been completed since funding became available, paid for through oil spill funding sources:

DWH10

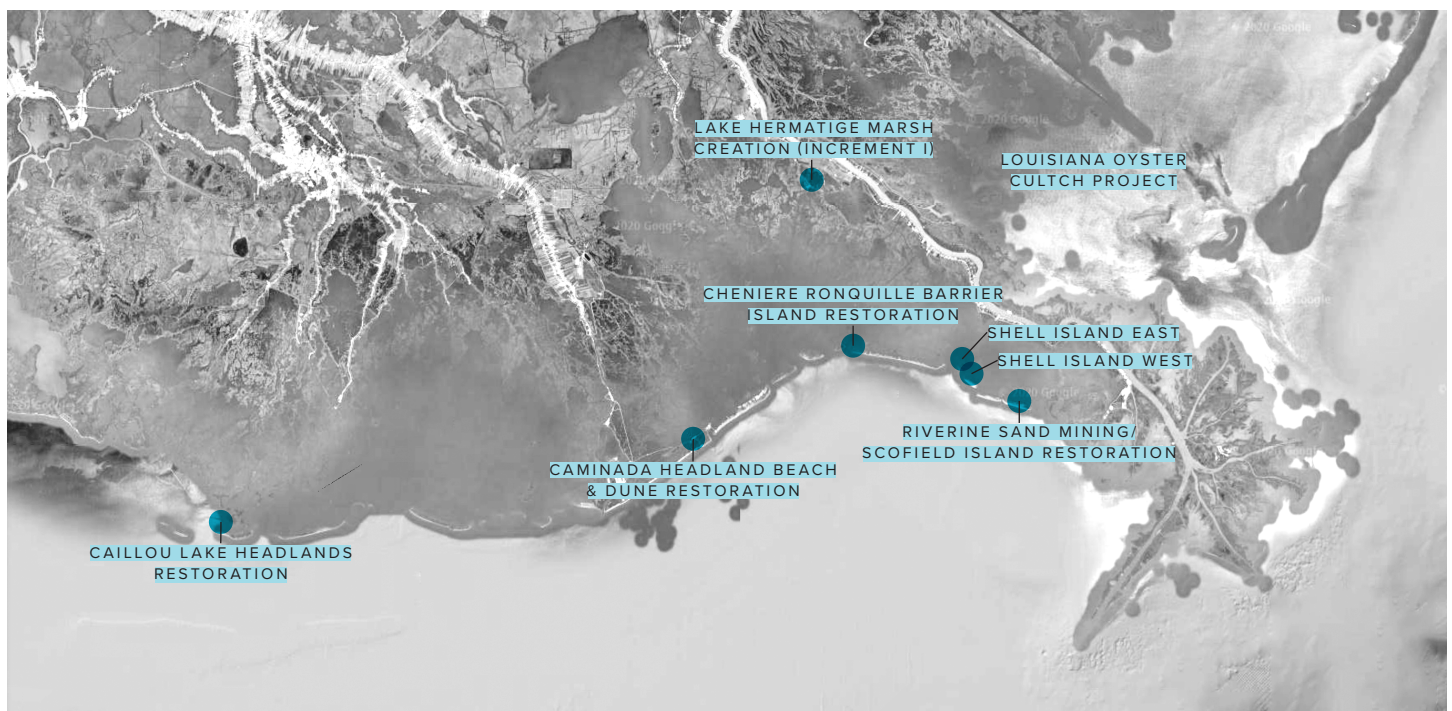
2020 marks the 10 year anniversary of the *Deepwater Horizon* oil spill – which released more than 134 million gallons of oil into the Gulf of Mexico. Hundreds of miles of our coastline were severely impacted causing adverse impacts to residents, wildlife, and stakeholders of multiple industries alike.

The oil spill added new stressors to an already deteriorating and fragile coastal ecosystem, further threatening the sustainability of Louisiana's wetlands. This national environmental disaster reinforced the importance of the coast to every facet of Louisiana life and the state's commitment to restoring and protecting it.

This historic and tragic event would become a critical component of CPRA's story. The financial penalties and settlements associated with the oil spill provided Louisiana with the opportunity to finally fund a proactive, innovative, and aggressive approach to combat coastal land loss.

Deepwater Horizon oil spill settlement dollars represent:

- 52% of FY 2021 budget
- 31% of projects in construction in FY 2021
- 3 of 7 of CPRA's primary funding sources





STATE MINERAL REVENUE

(RECURRING)

Used to match Louisiana's funding responsibility for CWPPRA projects and fund agency programs and operations.

GOMESA

GULF OF MEXICO ENERGY SECURITY ACT

(RECURRING)

Federal revenues derived from offshore oil and gas production and shared with the Land and Water Conservation Fund, the four Gulf producing states, and their coastal political subdivisions. In Louisiana funds have been constitutionally dedicated to the Coastal Protection Trust Fund and are used primarily to fund hurricane risk reduction projects. The State receives its GOMESA payment each spring based on revenues generated during the prior federal fiscal year.

In 2020, the state of Louisiana received its maximum payment of GOMESA funds for the first time in history.

NFWF

NATIONAL FISH AND WILDLIFE FOUNDATION

A total of \$1.27 billion allocated to the National Fish and Wildlife Foundation for Louisiana as a result of criminal plea agreements associated with the *Deepwater Horizon* oil spill. These funds may only be used to fund barrier island restoration or sediment diversions from the Mississippi and Atchafalaya Rivers.

NRDA

NATURAL RESOURCES DAMAGE ASSESSMENT

A total of \$5 billion in settlement funds used for *Deepwater Horizon* oil spill restoration activities. This funding stream is overseen by the Louisiana Trustee Implementation Group (LA TIG), who approves restoration and implementation plans that utilize these funds. These funds will be received over the 15-year period ending April 4, 2031.

RESTORE

RESOURCES AND ECOSYSTEMS SUSTAINABILITY, TOURIST OPPORTUNITIES, AND REVIVED ECONOMIES OF THE GULF COAST STATES ACT

Funding stream managed by the RESTORE Council and the U.S. Treasury responsible for overseeing 80% of the *Deepwater Horizon* oil spill Clean Water Act civil penalties. These penalties have been dedicated to restoring the long-term health of the natural ecosystems and economy of the Gulf Coast Region. These funds will be received over the 15-year period ending April 4, 2031. Louisiana's share of the RESTORE Trust Fund over 15 years is as follows:

- Direct Component: approx. \$260.4 million
- Spill Impact Component: approx. \$551.5 million
- Council-Selected Restoration Component: \$168.3 million to date
- Centers of Excellence Funding Component: approx. \$26.6 million

CWPPRA

COASTAL WETLANDS PLANNING, PROTECTION AND RESTORATION ACT

Used for planning and implementation of projects that create, protect, restore, and enhance wetlands in coastal Louisiana. Funds are derived through the Sport Fish Restoration and Boating Safety Trust Fund.

STATE SURPLUS FUNDS

Coastal protection and restoration is one of six eligible uses of surplus fund.

Governor John Bel Edwards committed at least \$117 million in state surplus dollars to the coastal fund, bringing CPRA's planned expenditures for Fiscal Year 2021 to over \$1 billion for the first time in Louisiana's history.

ANNUAL PLAN

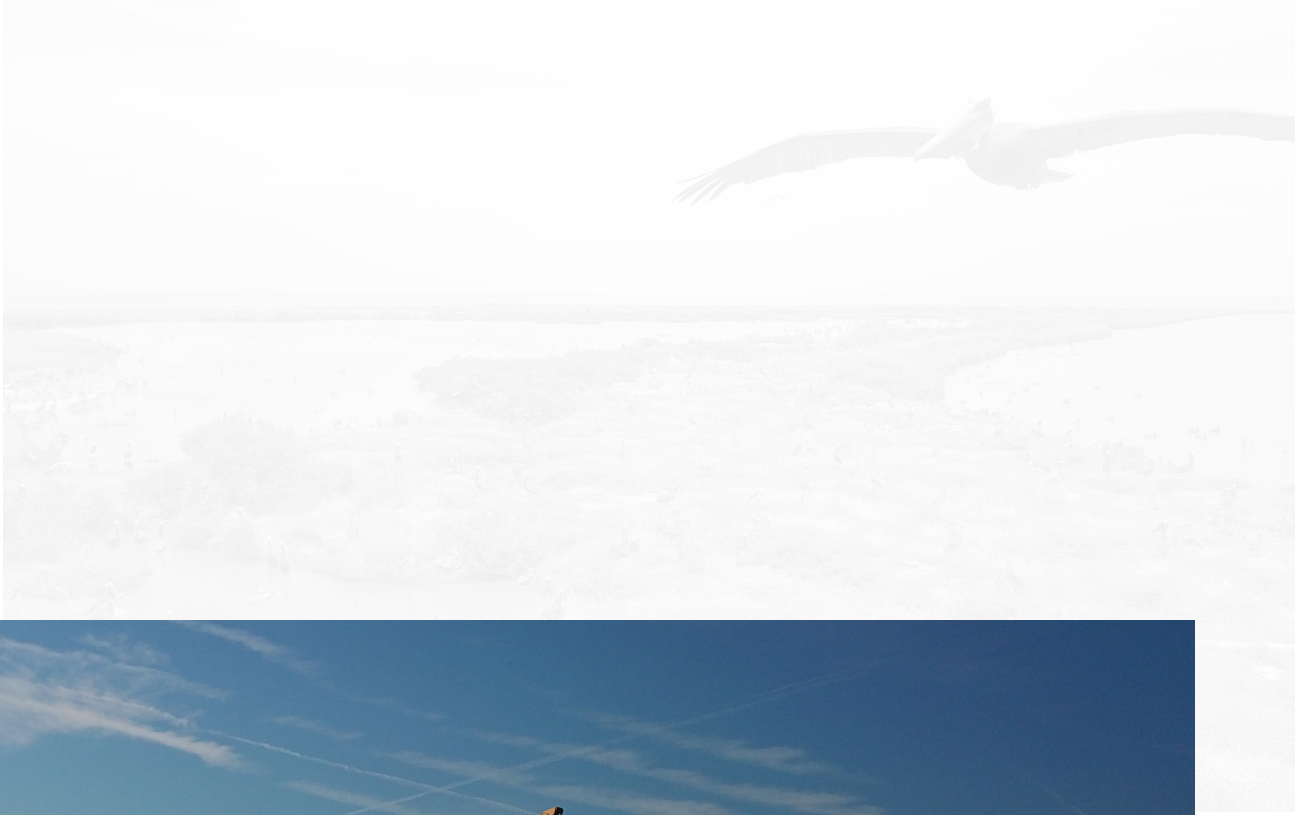
A companion to the Coastal Master Plan, the Annual Plan presents projected revenues and expenditures for the next three fiscal years, and provides an opportunity to highlight progress and efforts toward protection and restoration through anticipated project activity and implementation schedules.

The Master Plan's \$50 billion budget estimate allows us to identify, plan, and prioritize projects based on need and in alignment with our objectives, but it's important to note that the state doesn't possess all \$50 billion at the time the plan is created. Thus, the Annual Plan allows us to layout in greater detail the short-term goals and expected expenditures – providing a more detailed representation of how available funding is planned to be spent annually.

This methodology and process allows us to compare, select, and prioritize projects for engineering, design, and implementation – thoroughly vetting each proposed project and idea to ensure we end up with the best possible projects on our landscape. This Annual Plan details a snapshot of the most up-to-date information on how we're doing just that.

Queen Bess Island,
Jefferson Parish





\$1.08 BILLION INVESTMENT IN OUR COAST

THE LARGEST SPENDING PLAN IN THE HISTORY OF OUR STATE'S COASTAL PROGRAM

17 DREDGING PROJECTS

SLATED FOR
CONSTRUCTION
TOTALING

83.5 MILLION CUBIC YARDS
OF SEDIMENT TO CREATE OR NOURISH MORE THAN

14,000 ACRES



143769 ACTIVE PROJECTS

90% PROJECT
ASSOCIATED
EXPENDITURES

PLANNING

10 PROJECTS • \$16 MILLION

ENGINEERING & DESIGN

42 PROJECTS • \$110 MILLION
83,097 ACRES BENEFITED
2 MILES OF LEVEE

CONSTRUCTION

68 PROJECTS • \$804 MILLION
61,052 ACRES BENEFITED
118 MILES OF LEVEE

= 120 ACTIVE
PROJECTS

OM&M

164 COMPLETED
PROJECTS
\$44.9 MILLION

\$804 MILLION

ALLOCATED FOR CONSTRUCTION



PROGRESS & PLAN



OBJECTIVES

The individuals who live, work, and play in coastal Louisiana all cherish it for different reasons. A recreational fisherman in Lake Charles, a resident of Cocodrie, a business owner in Delacroix, and anyone in between – all share a strong sense of pride and value in what our coastal landscape means to them. But because the viewpoints are so diverse, it is imperative CPRA utilize a comprehensive, impartial approach, driven by the best available science in selection and implementation, that accounts for all factors, objectives, and people – to protect the cultural heritage and landscape we agree is vital to Louisiana's prosperity.

Used as a guide and vetting mechanism for project prioritization and implementation, CPRA's objectives define the purpose of the organization and serve as a driving force for all protection and restoration activities.



FLOOD PROTECTION

Reduce economic losses from storm surge based flooding to residential, public, industrial, and commercial infrastructure.

NATURAL PROCESSES

Promote a sustainable coastal ecosystem by harnessing the natural processes of the system.

COASTAL HABITATS

Provide habitats suitable to support an array of commercial and recreational activities coast wide.

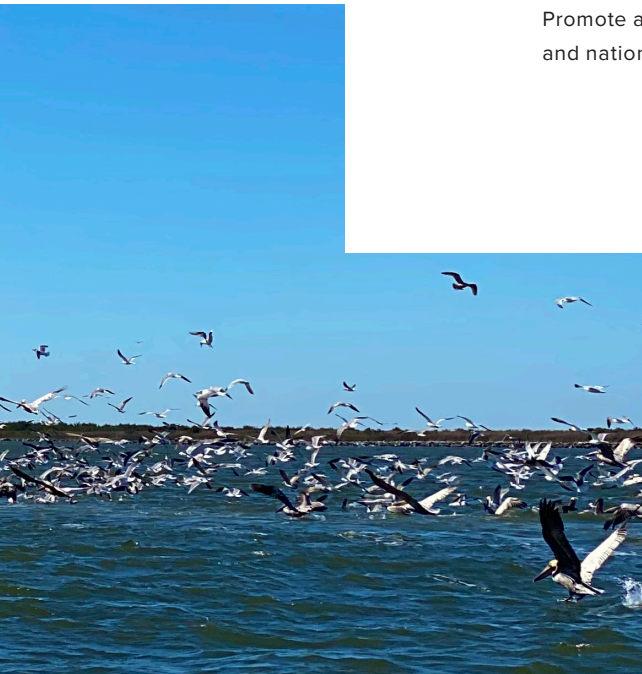
CULTURAL HERITAGE

Sustain the unique cultural heritage of coastal Louisiana by protecting historic properties and traditional living cultures and their ties and relationships to the natural environment.

WORKING COAST

Promote a viable working coast to support regionally and nationally important businesses and industries.

A shrimp boat in Barataria Bay.



With these objectives guiding decision making, the projects highlighted in this Annual Plan are exemplary measures of CPRA's commitment to prioritizing and delivering holistic solutions to a complex, urgent problem – considering innumerable factors to protect and preserve the culture, communities, and ecosystems vital to our success, and all that makes Louisiana the incomparable place we take pride in calling home.



BAYOU CHENE FLOODGATE

FY 2021 STATUS:

CONSTRUCTION

FUNDING SOURCE:

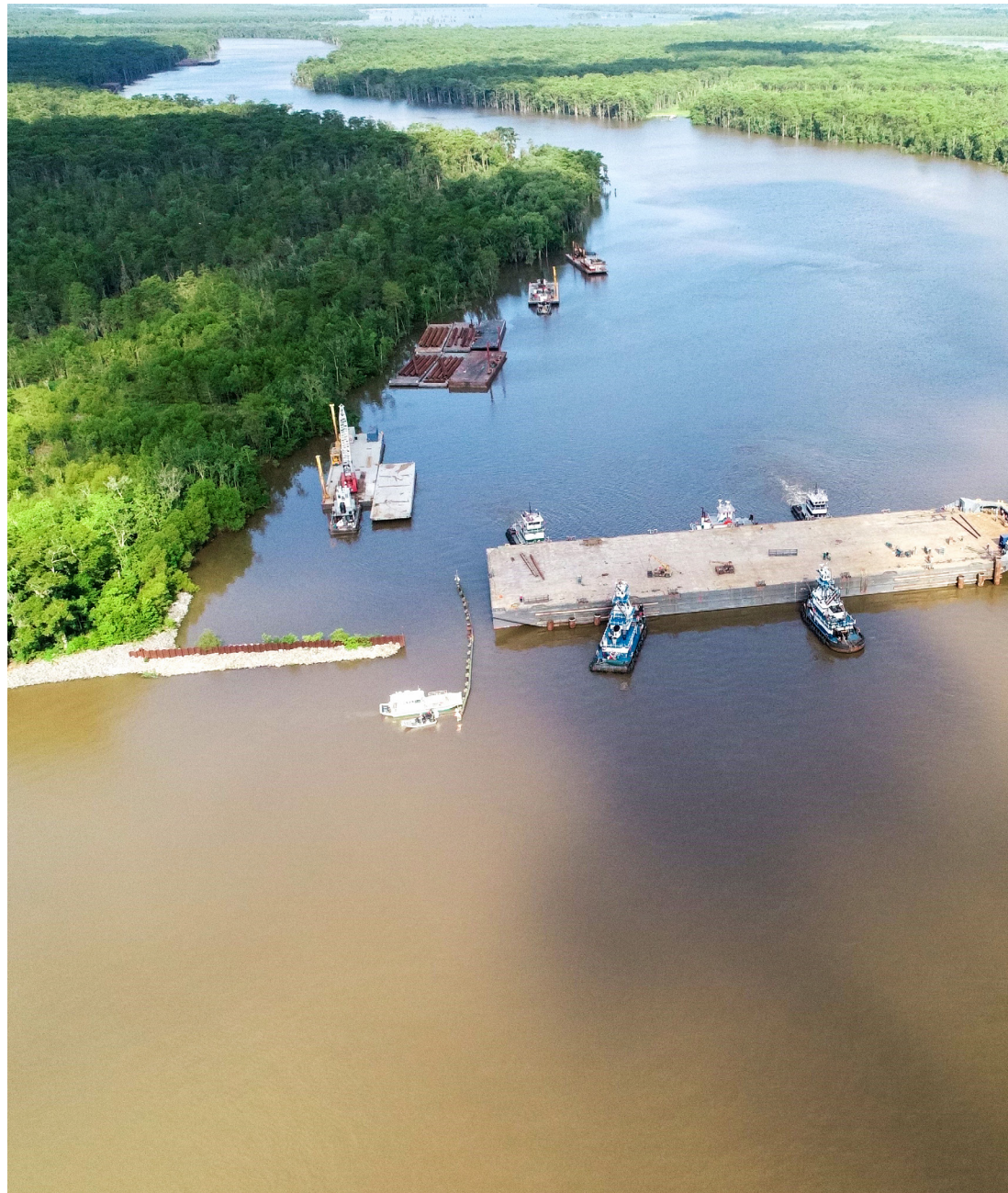
GOMESA

FY 2021 EXPENDITURE:

\$50 MILLION

ESTIMATED COST:

\$80 MILLION

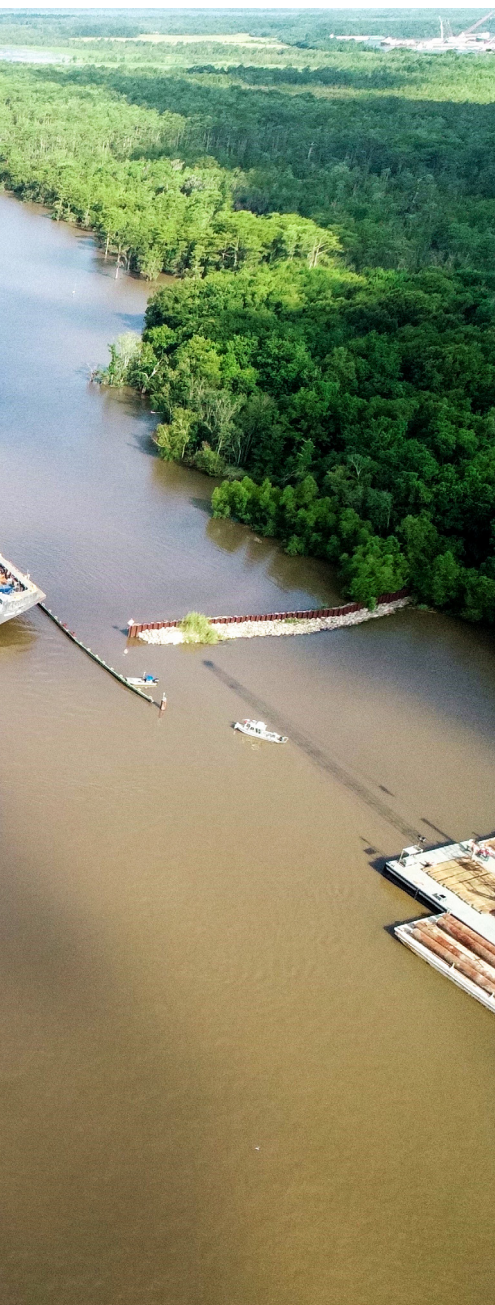


Temporary floodgate
structure, St. Mary Parish



For the last 50 years, Atchafalaya River backwater flooding through Bayou Chene has presented an increasingly hazardous challenge for residents and business owners of the area. Since 1973, local government authorities have utilized a temporary emergency solution – acquiring a large river barge and sinking it across the channel of Bayou Chene – on multiple occasions (including the catastrophic 2016 floods and unprecedented high-river year in 2019) to prevent flood damage in the surrounding communities. While this has proved effective, emergency implementation has been costly, and this last-resort approach has not been optimal in preventing varying measures of flooding on the back side of Morgan City and areas of St. Mary, Terrebonne, Lafourche, St. Martin, Assumption, and Iberville Parishes.

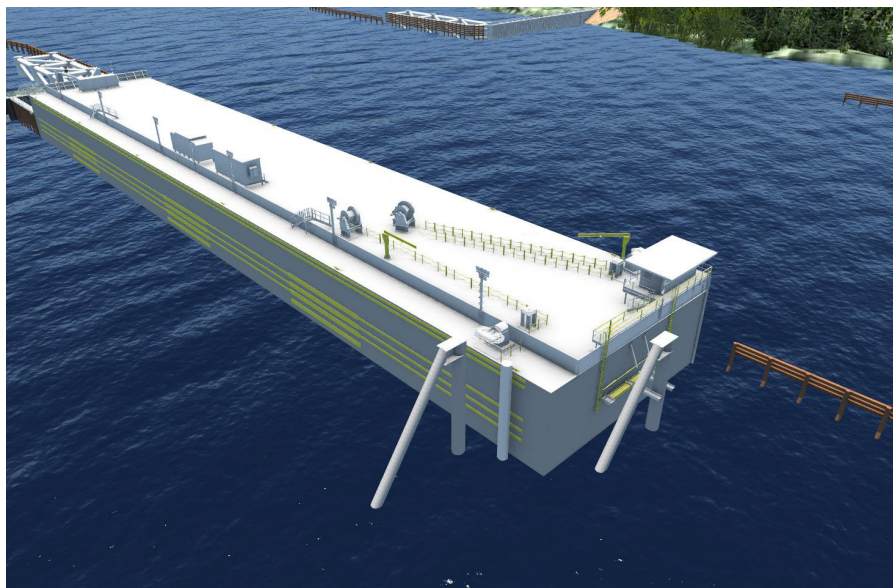
Recognizing the need and importance of protecting the citizens, property, and infrastructure in the affected areas, CPRA pledged \$5 million in March 2019 toward the engineering and design of a permanent flood control structure, and secured an additional \$75 million in GOMESA funds for construction of a permanent gate structure.



FEATURES

Once complete, the project will feature a 400-foot barge gate that will provide protection against storm surge up to 10 feet, along with a series of floodwalls and levees to support additional protection.

Floodgate structure schematic



WEST SHORE LAKE PONTCHARTRAIN HURRICANE PROTECTION

FY 2021 STATUS:

CONSTRUCTION

FUNDING SOURCE:

STATE-FEDERAL
COST SHARE

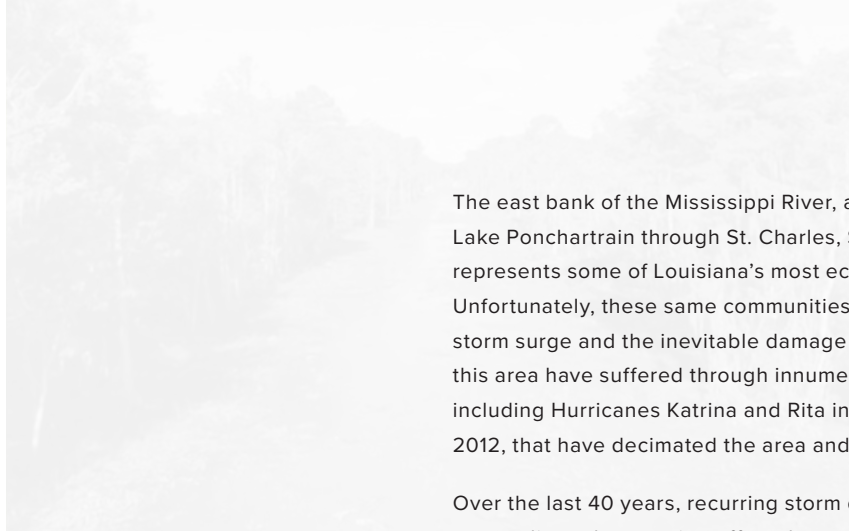
FY 2021 EXPENDITURE:

\$75.5 MILLION

ESTIMATED COST:

\$760 MILLION





The east bank of the Mississippi River, and extending into the western shore of Lake Ponchartrain through St. Charles, St. John the Baptist, and St. James Parishes, represents some of Louisiana's most economically fruitful and vital communities. Unfortunately, these same communities also represent those most vulnerable to storm surge and the inevitable damage left behind. The people and landscape of this area have suffered through innumerable storms and severe weather events, including Hurricanes Katrina and Rita in 2005, Gustav and Ike in 2008, and Isaac in 2012, that have decimated the area and wetlands that protect them.

Over the last 40 years, recurring storm damage, man-made influences, and uncoordinated protection efforts have devastated the swamp and wetlands in this area. As a result, the people living in this region have virtually no risk reduction measures in place to protect them.

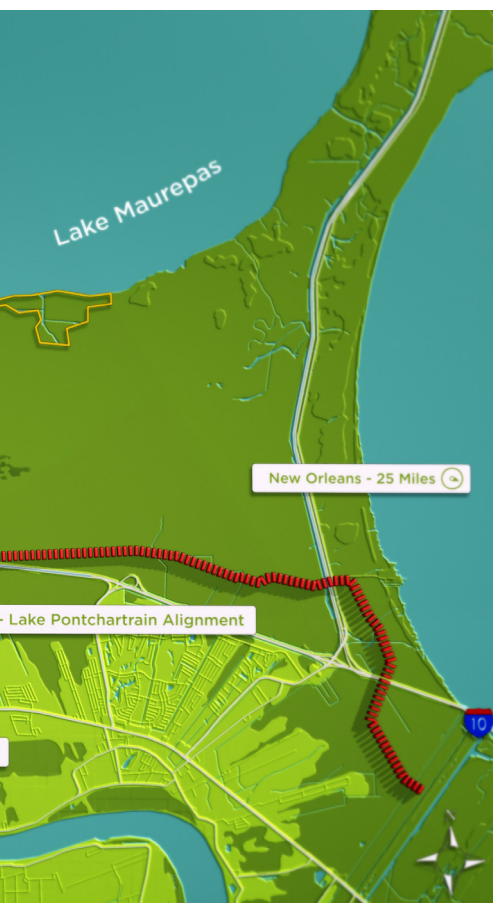
Further, this particular area of coastal Louisiana is home to a transportation hub and several pieces of critical infrastructure that are vital in supporting not only our state, but the national economy. These measures carry people, services, and goods throughout our country both by water and on land – including the dominant hurricane evacuation route for the entire New Orleans area.

After decades of severe weather impacts, storm surge, and record-breaking flooding causing delays in travel, production, and emergency response and evacuation in the area, and through unwavering pressure from Louisiana's leaders, Congress authorized the project in 2014, and tireless pursuit of funding on behalf of these vulnerable communities resulted in appropriations from Congress in 2018.

This project, which is being constructed in close coordination with the U.S. Army Corps of Engineers, will serve to protect properties, evacuation routes, and other critical infrastructure that keeps this corridor of the state operating and will reduce the risk of storm surge damage in the area.

Additionally, the West Shore Lake Pontchartrain Hurricane Protection project shares a border with the River Reintroduction into Maurepas Swamp project, creating an integrated system. The diversion project will restore the swamp that provides a storm surge buffer for the levee project – a paragon of CPRA's synergistic approach to coastal protection and restoration.

Map depicting the close proximity of the West Shore Lake Pontchartrain Hurricane Protection project and River Reintroduction into Maurepas Swamp project.



FEATURES

The West Shore Lake Pontchartrain Hurricane Protection Project is better described as a series of smaller projects, spanning 23 miles to include 17.5 miles of levee, one mile of T-wall, four pump stations, and two drainage structures.

DREDGING & MARSH CREATION PROJECTS

Delivery of dredged material transported via barge for the Caminada Headland Beach and Dune Restoration project.

SINCE 2007, CPRA HAS DREDGED AND PUMPED MORE THAN 157 MILLION CUBIC YARDS OF SEDIMENT TO BENEFIT OR BUILD 47,646 ACRES OF COASTAL HABITAT.



“In 2020, CPRA, alongside our partners, will undertake our largest commitment to dredging in the history of the coastal program. With a record 17 dredging projects in construction that will deliver approximately 84 million cubic yards of dredged material, we will create and nourish more than 14,000 acres of land, marsh, shorelines, and barrier islands across the state.”

- Bren Haase, CPRA Executive Director

THREE-YEAR DREDGING PROJECT OUTLOOK

	ID	Project Name	Estimated Dredge Volume	CY 2020	CY 2021	CY 2022	CY 2023
Funding Approved	BA-0125	NORTHWEST TURTLE BAY MARSH CREATION	2,200,000				
	TE-0143	TERREBONNE BASIN BARRIER ISLAND	9,000,000				
	BA-0171	CAMINADA HEADLAND BACK BARRIER MARSH CREATION	2,600,000				
	CS-0066	CAMERON MEADOWS MARSH CREATION AND TERRACING	5,000,000				
	PO-0169	NEW ORLEANS LANDBRIDGE SHORELINE STABILIZATION AND MARSH CREATION	1,300,000				
	TE-0138	BAYOU DECADE RIDGE AND MARSH CREATION	2,900,000				
	BA-0203	BARATARIA BASIN RIDGE AND MARSH CREATION - SPANISH PASS INCREMENT	12,200,000				
	CS-0080	RABBIT ISLAND RESTORATION PROJECT	130,000				
	PO-0163	GOLDEN TRIANGLE MARSH CREATION	6,200,000				
	BA-0197	WEST GRAND TERRE BEACH NOURISHMENT AND STABILIZATION	2,500,000				
	PO-0180	LAKE BORGNE MARSH CREATION - INCREMENT ONE	13,200,000				
	BA-0207	LARGE-SCALE BARATARIA MARSH CREATION - UPPER BARATARIA INCREMENT	9,900,000				
	ME-0020	SOUTH GRAND CHENIER MARSH CREATION	1,500,000				
	BA-0240	GRANDE CHENIERE RIDGE MARSH CREATION	5,000,000				
	PO-0075	LABRANCHE EAST MARSH CREATION	6,700,000				
	TE-0134	WEST FOURCHON MARSH CREATION	1,600,000				
2021 Funding Requests *	BA-0195	BARATARIA BAY RIM MARSH CREATION AND NOURISHMENT	1,700,000				
	BA-0194	EAST LEEVILLE MARSH CREATION AND NOURISHMENT	1,600,000				
	ME-0031	FRESHWATER BAYOU MARSH CREATION	2,300,000				
	TE-0117	ISLAND ROAD MARSH CREATION AND NOURISHMENT	1,900,000				
	PO-0133	LABRANCHE CENTRAL MARSH CREATION	7,300,000				
	CS-0079	OYSTER LAKE MARSH CREATION AND NOURISHMENT	2,000,000				
	BS-0024	TERRACING & MARSH CREATION SOUTH OF BIG MAR	2,000,000				

*2 Projects to be selected

MID-BASIN SEDIMENT DIVERSION PROGRAM

FY 2021 STATUS:

ENGINEERING & DESIGN

FUNDING SOURCE:

NFWF

MID-BARATARIA

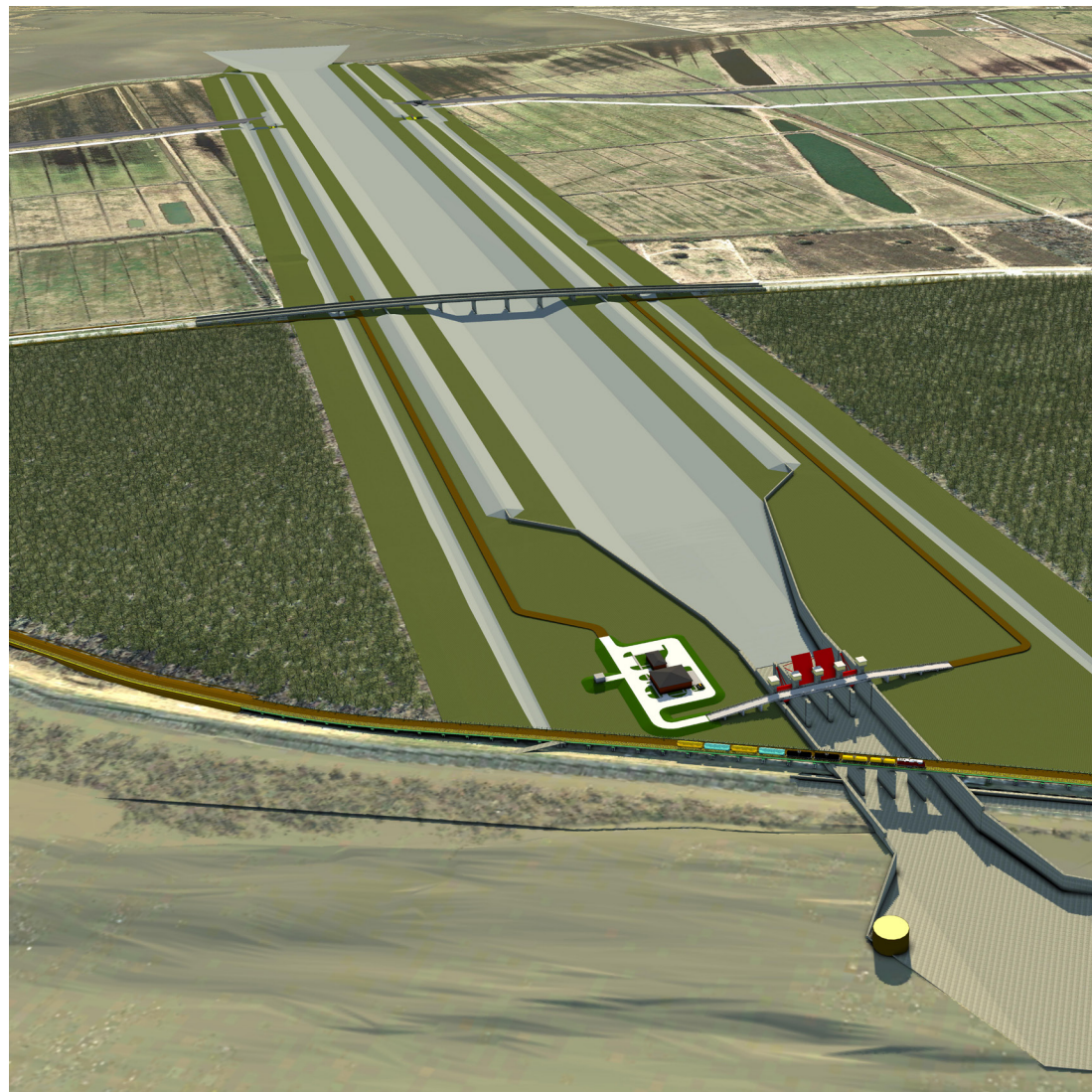
FY 2021 EXPENDITURE:

\$28 MILLION

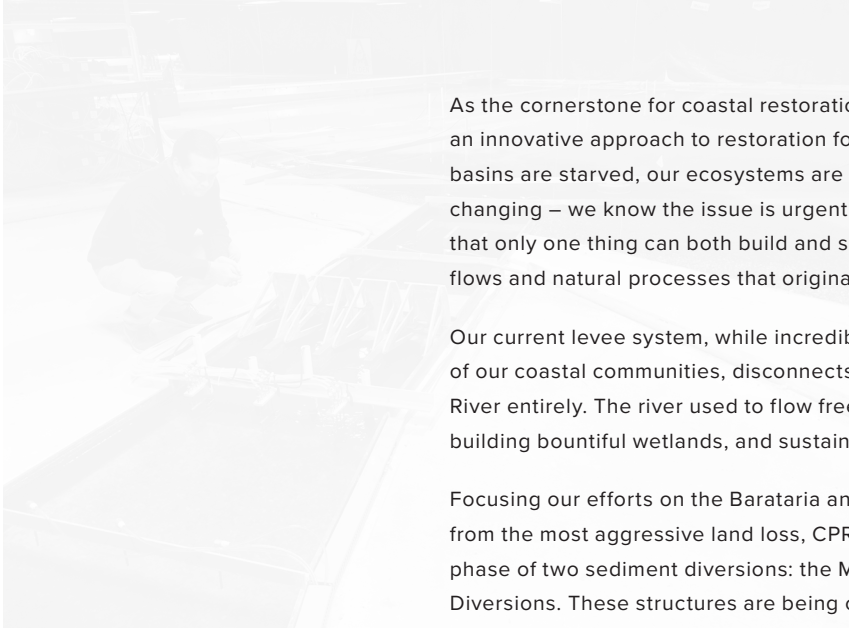
MID-BRETON

FY 2021 EXPENDITURE:

\$23 MILLION



Mid-Barataria Sediment
Diversion structure
schematic



As the cornerstone for coastal restoration in Louisiana, sediment diversions are an innovative approach to restoration for both our state and our country. Our basins are starved, our ecosystems are disappearing, and our coastal estuaries are changing – we know the issue is urgent and modern science and engineering agree that only one thing can both build and sustain land long-term: the Mississippi River flows and natural processes that originally built the wetlands.

Our current levee system, while incredibly important and vital to the protection of our coastal communities, disconnects many of our basins from the Mississippi River entirely. The river used to flow freely through the basins, nourishing the area, building bountiful wetlands, and sustaining a productive ecosystem.

Focusing our efforts on the Barataria and Breton Sound basins, two areas suffering from the most aggressive land loss, CPRA is currently in the Engineering & Design phase of two sediment diversions: the Mid-Barataria and Mid-Breton Sediment Diversions. These structures are being carefully designed to reconnect the river to the respective deprived basins, reestablishing hydrological flows and restoring historic deltaic sediment deposition processes that originally built them.

MID-BARATARIA SEDIMENT DIVERSION MODELING

In 2019 and 2020, CPRA completed extensive numerical and physical modeling of the Mid-Barataria Sediment Diversion, both to inform the federal permitting process and to refine project design and features. **Modeling results indicate the Mid-Barataria Sediment Diversion will deliver 30,000 tons of sand, silt, and clay on average per day and has the potential to build up to 30,000 acres of land in 50 years of operation.**

FEATURES

Each respective structure is being thoroughly designed to be the best suitable project for their proposed location in the river. The projects' design consists of a gated structure aligned with the Mississippi River levee system and a self-contained channel that flows from the river to the basin.



ECONOMIC IMPACT

Given the magnitude and complex nature of these two sediment diversions, the project construction alone will have significant positive impacts to our coastal parishes (Plaquemines, St. Bernard, Orleans, and Jefferson) before we ever see any physical landscape change or benefits. In 2019, a study¹ conducted by Dr. Loren C. Scott detailed the economic benefits our coastal communities could see from total construction efforts of both projects:

- Business sales increase by just over \$3.1 billion
- Household earnings of citizens will jump almost a billion dollars - \$809.2 million to be exact
- An average of 2,255 jobs per year will be supported by the construction spending, with a peak of 3,962 jobs in 2023
- \$36.7 million in revenue into the hands of local government entities
- Louisiana will collect an extra \$56.6 million in state revenues over the seven-year construction period, totaling \$8.1 million annually

RIVER REINTRODUCTION INTO MAUREPAS SWAMP

FY 2021 STATUS:

CONSTRUCTION

FUNDING SOURCE:

RESTORE

FY 2021 EXPENDITURE:

\$8 MILLION

ESTIMATED COST:

\$200 MILLION

Decimated marsh
vegetation in
Maurepas Swamp,
St. John the Baptist



Once a thriving freshwater ecosystem, home to hundreds of species of wildlife, the Maurepas Swamp is now a shell of the ecosystem it used to be. After being disconnected from the Mississippi River by our levee system and losing access to flows that enriched the soil and nourished the area, the Maurepas Swamp has declined rapidly. Wildlife no longer migrate to the area, fish populations are diminishing, and the once-thriving plant life is decimated.

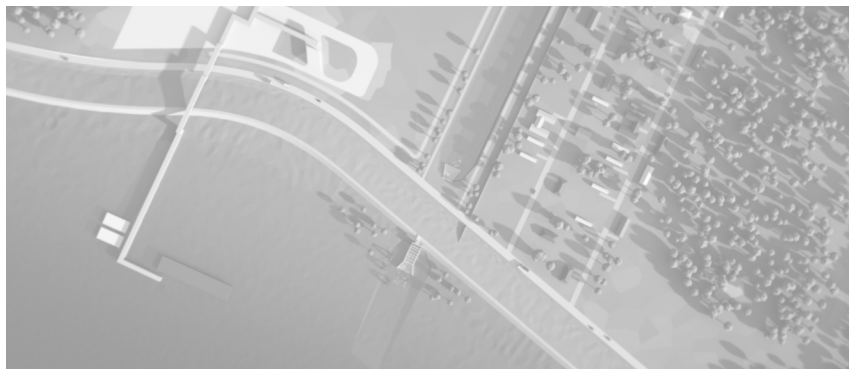
In both the 2012 and 2017 Coastal Master Plans, CPRA details a river reintroduction project for the area, or freshwater diversion, to reconnect the swamp to the natural river flow that originally built it and allowed for years of a thriving, sustainable ecosystem. This project will restore natural swamp hydrology and increase the sediment and nutrient loads that enter the swamp – giving the vegetation and wildlife nutrients necessary to flourish once again.

The project, located in Garyville, Louisiana, is a \$200 million investment that will benefit more than 45,000 acres of coastal marsh, forests, and wetlands in Ascension, Livingston, St. James, and St. John the Baptist Parishes.

In 2020, the RESTORE Council approved \$130 million in funding for the project through a segment of *Deepwater Horizon* oil spill settlement dollars, which are earmarked for coastal area projects that restore and protect natural resources on a large scale.

FEATURES

The project includes a gated intake structure on the Mississippi River near Garyville, LA, a newly excavated conveyance channel to carry the water north to Airline Highway, and an enhanced Hope Canal with guide levees to convey the nutrient rich water to the outfall area just north of I-10 where the river water will re-connect with and nurture the degraded swamp ecosystem.



QUEEN BESS ISLAND RESTORATION

FY 2021 STATUS:

COMPLETE

FUNDING SOURCE:

NRDA

Funded by the Louisiana Trustee Implementation Group to mitigate the impact of the *Deepwater Horizon* oil spill on our bird population.

FY 2021 EXPENDITURE:

\$2 MILLION

ESTIMATED COST:

\$18.7 MILLION



Brown pelicans at
Queen Bess Island.



Queen Bess Island before restoration (left) and after restoration (right).

We recognize that Louisiana's wetlands encompass many different kinds of habitat, and that birds, fish, seafood, and mammals rely on our coast for survival just as much as we do. The same wetlands that provide storm protection for our communities, jobs that drive economic prosperity, and a haven for recreation also provide shelter to the wildlife that enhance our coast and our lives. As such, it's imperative we ensure a healthy ecosystem survives for all of us by focusing on a holistic approach to protection and restoration that accounts not only for human needs and impacts, but for those of the species we share our coastline with.

Marking historical significance for one of our state's most distinguished symbols and cherished species, CPRA completed the restoration of Queen Bess Island, the fourth-largest Brown Pelican rookery in Louisiana, home to nearly 20% of the state's total pelican nesting activity. Notably, this island rests within Barataria Basin, ground zero of the *Deepwater Horizon* oil spill.

CPRA, through extensive collaboration with the Louisiana Department of Wildlife and Fisheries, managed the engineering, design, and construction of the \$18.7 million restoration project, funded with *Deepwater Horizon* settlement funds, for this colonial waterbird nesting habitat in Jefferson Parish. The island, which is home to more than eight other species of nesting colonial waterbirds, including Tricolored Herons, Great Egrets, Roseate Spoonbills, and Royal Terns, had lost all but roughly five acres of land suitable for nesting.

In 2019 and 2020, 36 acres of the island were restored. Remaining funding has been dedicated to maintenance, sustainability, and monitoring of the habitat and bird species using it.

FEATURES

Restoration work completed on the island included placing river sand onto the interior portions of the island to restore acreage, placing large limestone on most of the perimeter of the island to contain and protect the deposited material, placing smaller limestone on the shoreline to provide water access for flightless young birds, and planting vegetation to create an optimal nesting habitat. Additionally, an offshore lagoon-style nursery feature was created for young birds to learn how to swim, preen, and feed.

In FY2021, CPRA will institute additional measures to support and sustain the island, including planting vegetation and other operation and maintenance efforts.



NONSTRUCTURAL PROJECTS

FY 2021 EXPENDITURE:

\$7.8 MILLION



An elevated home.

ACTIVE PROJECTS

SOUTHWEST COASTAL

The project consists of 3,967 nonstructural projects in Calcasieu, Cameron, and Vermilion Parishes focused on flood risk reduction and improving community resiliency. There are several components of the project's plan, including home elevations, dry flood proofing measures for commercial structures, and localized berms for commercial warehouses. Current efforts include Engineering & Design activities for approximately 38 residential home elevations.

JEFFERSON PARISH

In partnership with the Governor's Office of Homeland Security and Emergency Preparedness (GOHSEP) and Jefferson Parish, CPRA plans to use nonstructural program development funds to support elevation of 14 primary residences in the parish. Funds will be used to fulfill local match requirements for federal hazard mitigation grant programs and allow for approved risk reduction projects that have been on hold to proceed. Each of these structures is expected to experience significantly increased storm surge-based flood risk in the next 50 years and elevating them will mitigate much of that risk.





THE WORKING COAST

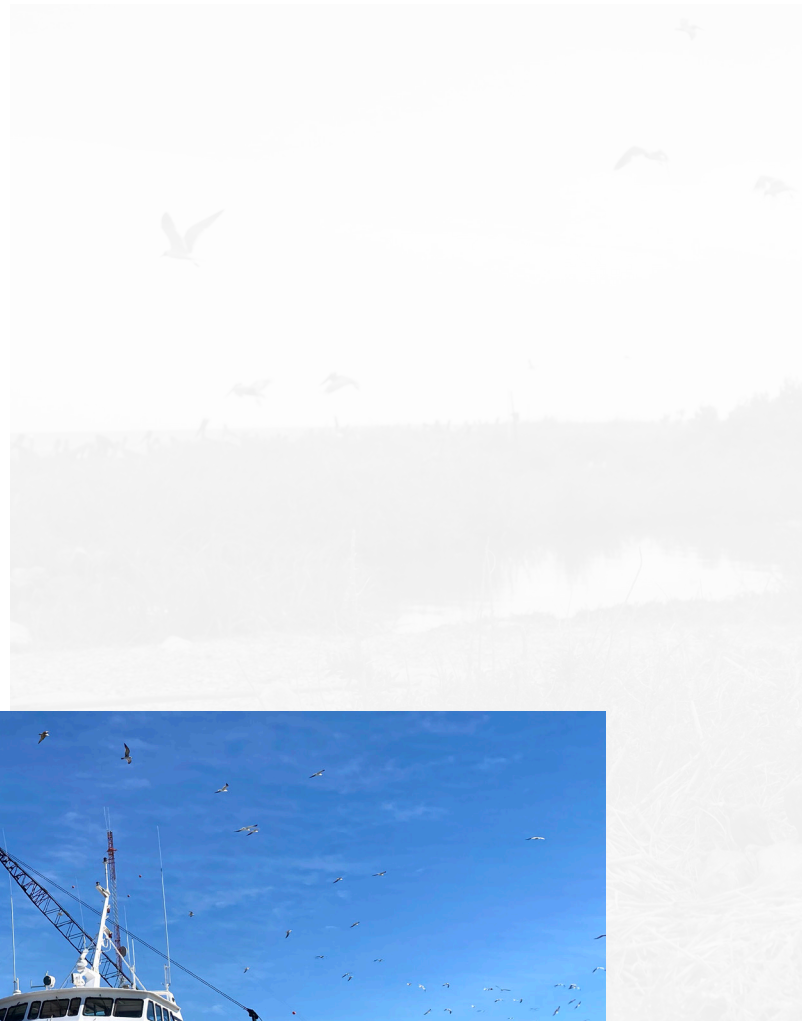


ECONOMIC IMPACT

It's not just about putting land back on the map – protection and restoration planning and implementation also supports those who make a living in our wetlands – and all the hard work and value they bring to our country.

Our coastal investments have national significance – we add hundreds of billions of dollars to America's economy each year. It's imperative that we protect our ports, natural habitat for wildlife, and energy infrastructure to support the working coastline that supports our country.

Looking at it from an economical, ecological, or coastal resident's perspective – the value of our coast is priceless.



WHAT'S AT STAKE?

If we don't act with urgency, the businesses, homes, and infrastructure on the physical landscape will be lost, and economic implications will span across the state and nation.

If we don't prioritize coastal restoration, Louisiana stands to lose²:

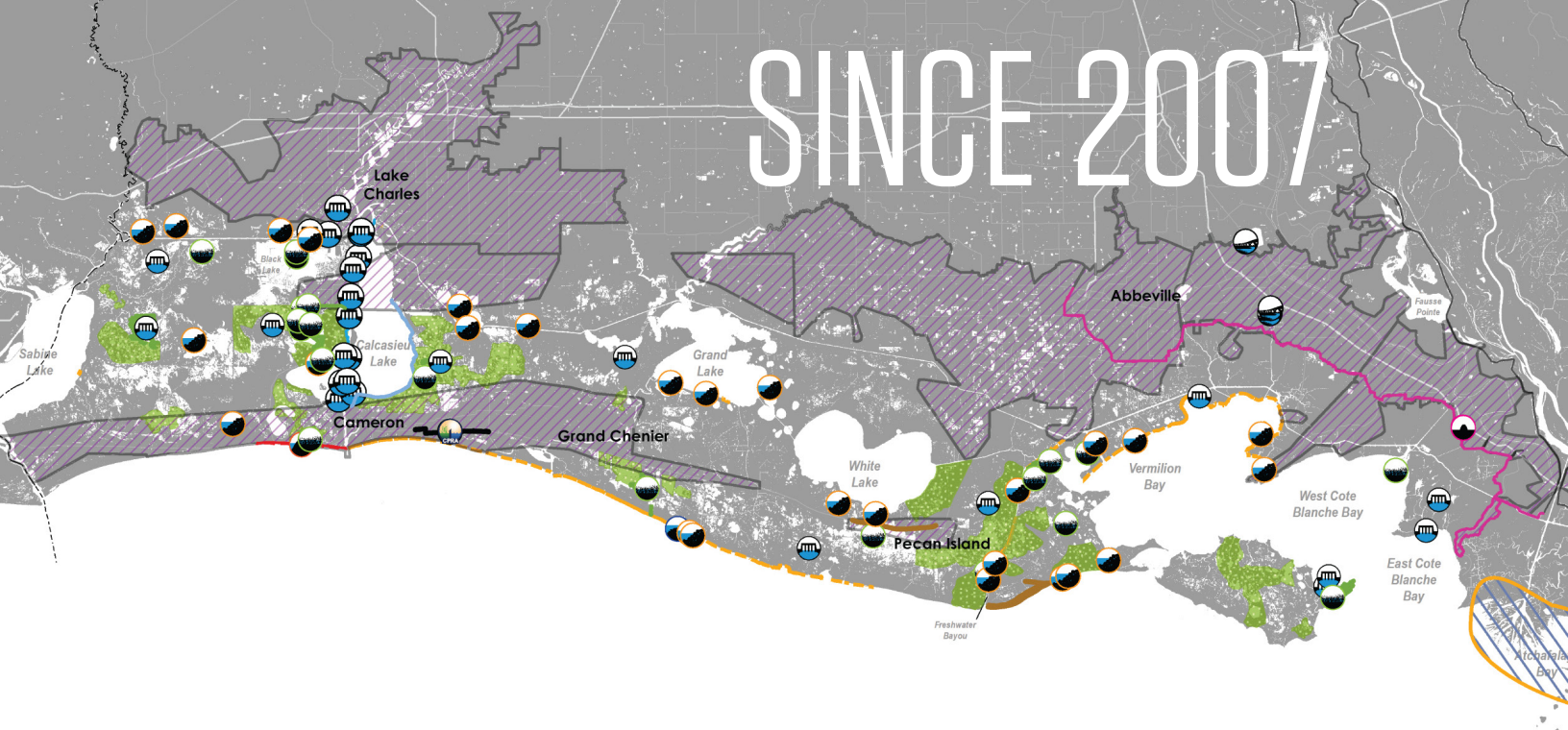
- 2,250 square miles lost by year 2067 if we take no additional action
- \$3.6 billion in Louisiana business, residential, and infrastructure lost due sheerly to land loss
- An additional \$138 billion in Louisiana business, residential, and infrastructure assets are at risk due to increased storm damage in Louisiana tied directly to lack of action and protection
- \$7.6 billion in economic activity throughout the nation

WHAT'S OUR PLAN?

By investing billions of dollars into protection and restoration of our coast in the coming years, we'll not only provide physical and tangible benefits to our landscape, but Louisianans can expect to see²:

- 7,800 to 10,500 additional jobs each year
- \$460 to \$620 million more in wages each year
- \$590 to \$785 million value added to the state's economy each year
- \$1.1 to \$1.5 billion in annual output

PROJECTS COMPLETED SINCE 2007



13

\$780M



BARRIER ISLAND
RESTORATION

12

\$89M



HYDROLOGIC
RESTORATION

21

\$4.3B



STRUCTURAL
PROTECTION

24

\$395M



SHORELINE
PROTECTION

2

\$16M



LIVING
SHORELINE

1

\$18M



RIDGE
RESTORATION

24

\$585M



MARSH
CREATION

7

\$55M



INFRASTRUCTURE

2

\$47M



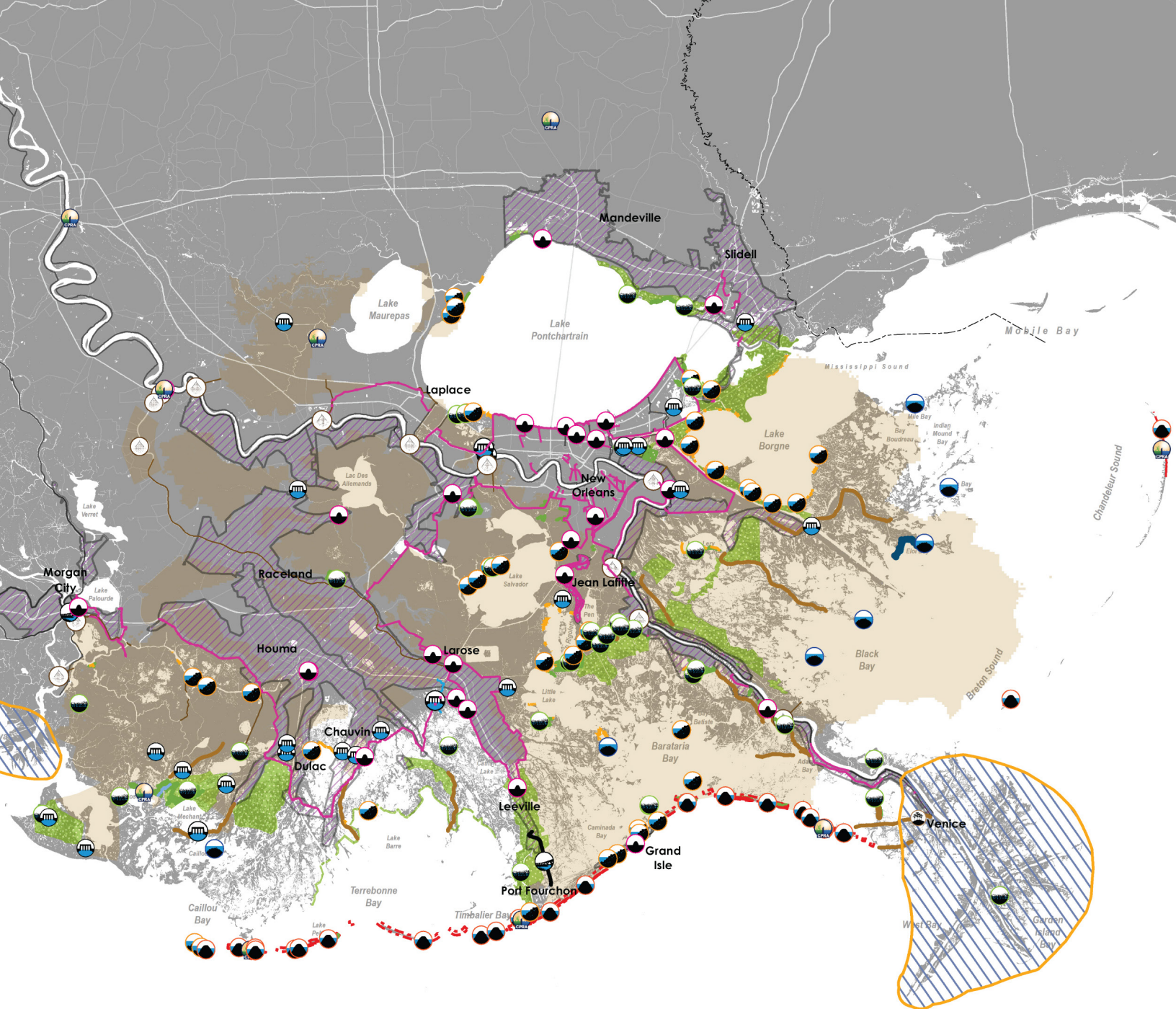
DIVERSION

7

\$273M



MISC.



Every six years, per the directive of state Legislature, CPRA releases Louisiana's Comprehensive Master Plan for a Sustainable Coast, which details the priorities, projects, plans, and benchmarks for implementing an integrated approach to coastal protection and restoration in Louisiana. This plan is intended to be a living document, updated incrementally to reflect changes to our coast, economy, and society, as well as advancements in science and technology, used in the decision-making, planning, and implementation processes.

Further, CPRA has committed to its dedicated and passionate groups of stakeholders that transparency and open lines of communication will remain at the forefront of decision-making and planning. As such, the Annual Plan serves as an opportunity to inventory integrated coastal protection and restoration projects, provide an update on progress toward long-term goals, and relay funding, budgets, and expenditure information.

This Annual Plan serves to accomplish all of the above and provides a "snapshot" in time, highlighting both progress made toward our protection and restoration plans, as well as an outlook of what's to come.

GOVERNOR JOHN BEL EDWARDS' SECOND TERM COASTAL PRIORITIES



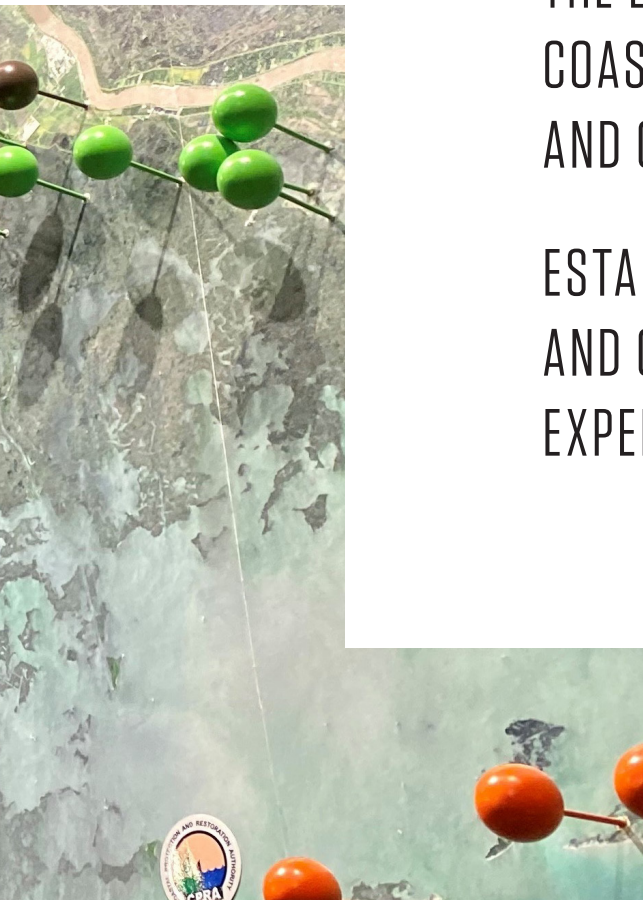
BUILDING RESILIENCE AND ESTABLISHING
A CLIMATE INITIATIVES TASK FORCE

PURSUING A MORE INTEGRATED
APPROACH TO THE MISSISSIPPI
AND ATCHAFALAYA RIVERS

PURSUING INITIATIVES THAT WILL ENSURE
A SUSTAINABLE OYSTER INDUSTRY

GROWING, DIVERSIFYING, AND PROTECTING
THE ECONOMY THROUGH INVESTMENTS IN
COASTAL PROTECTION AND RESTORATION
AND COORDINATED ADVOCACY

ESTABLISHING THE COASTAL INNOVATION
AND COLLABORATION HUB TO FOCUS
EXPERTISE AND SHARE KNOWLEDGE



Gov. John Bel Edwards adding a pin for CPRA's River Reintroduction into Maurepas Swamp project to the large-scale map of coastal Louisiana at the LSU Center for River Studies.



FISCAL YEAR 2021



PROJECTED CONSTRUCTION SCHEDULES

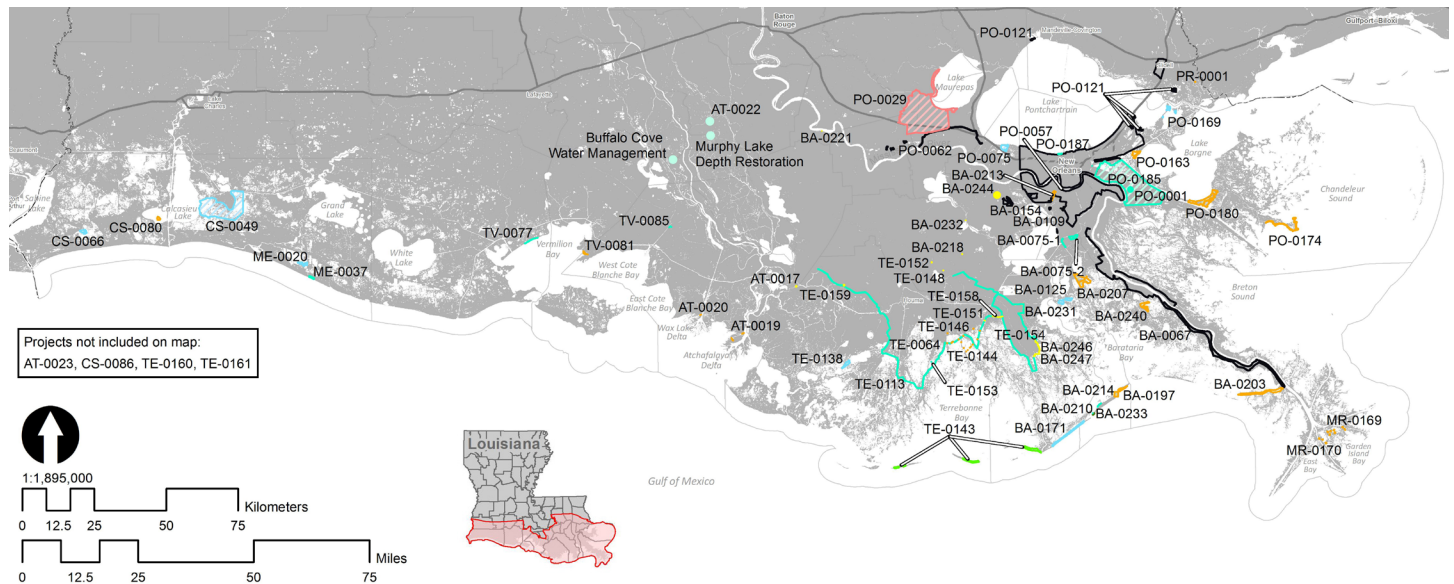


TABLE 1: PROJECTS SCHEDULED TO BE IN CONSTRUCTION IN FY 2021

ID	Project Name	Construction Start Date ¹	Construction Finish Date	Total Project Estimate
CWPPRA PHASE II PROJECTS				
BA-0125	Northwest Turtle Bay Marsh Creation	14-Dec-18	28-Oct-20	\$33,664,670
BA-0171	Caminada Headlands Back Barrier Marsh Creation	12-Nov-19	5-Oct-21	\$32,284,094
CS-0049	Cameron-Creole Freshwater Introduction	04-Jun-19	30-Jul-21	\$26,776,735
CS-0066	Cameron Meadows Marsh Creation and Terracing	20-Feb-20	7-Apr-22	\$32,081,560
ME-0020	South Grand Chenier Marsh Creation Project	15-Feb-21	15-Feb-22	\$23,873,346
PO-0075	Labranche East Marsh Creation	15-Apr-21	15-Dec-22	\$33,555,033
PO-0169	New Orleans Landbridge Shoreline Stabilization & Marsh Creation	21-May-20	09-Aug-21	\$25,446,125
TE-0138	Bayou DeCade Ridge and Marsh Creation	30-Apr-20	12-Sep-21	\$24,781,121
WRDA PROJECTS				
BA-0210	Grand Isle & Vicinity Breakwater	06-May-19	1-Oct-21	\$15,000,000
STATE-ONLY PROJECTS				
AT-0022	East Grand Lake Upper Region	In Development	In Development	\$3,589,120
AT-0023	Henderson Lake Water Management Unit Spoil Bank Gapping	In Development	In Development	\$500,000
BA-0075-1	Jean Lafitte Tidal Protection	19-Feb-14	16-Nov-20	\$33,582,639
BA-0075-2	Rosethorn Tidal Protection	01-Jun-20	2-Mar-22	\$24,930,787
BA-0233	Grand Isle Bayside Breakwater	12-Aug-19	28-Jul-20	\$6,500,000
CS-0086	Cameron Parish Gulf Shoreline Protection	In Development	In Development	\$2,000,000
ME-0037	Rockefeller Shoreline Protection	31-Jan-20	24-Jun-21	\$9,270,263
PO-0001	Violet Canal Repairs	25-May-20	28-May-21	\$1,000,000
PO-0185	St. Bernard Pump Station Repairs	02-Jun-20	23-Apr-21	\$4,000,000
PO-0187	Jefferson Parish Lakefront Project	In Development	In Development	\$1,750,000
TE-0064	Morganza to the Gulf	30-Nov-05	30-Jun-22	\$391,600,000
TE-0153	LaCache Pump Station	18-Nov-19	20-Nov-20	\$2,000,000
TE-0154	Larose to Golden Meadow System Improvements	08-May-19	2-Jul-21	\$5,600,000

TABLE 1: PROJECTS SCHEDULED TO BE IN CONSTRUCTION IN FY 2021 (CONTINUED)

ID	Project Name	Construction Start Date ¹	Construction Finish Date	Total Project Estimate
TE-0160	South Lafourche Levee Improvements	In Development	In Development	\$4,000,000
TE-0161	North Lafourche Levee Improvements	In Development	In Development	\$3,000,000
TV-0077	North Vermilion Bay Shoreline Protection	03-Jun-21	5-Oct-22	\$7,900,000
N/A	Murphy Lake Depth Restoration	In Development	In Development	\$300,000
N/A	Buffalo Cove Water Management	In Development	In Development	\$300,000
HSDRRS AND OTHER FEDERAL HURRICANE PROTECTION PROJECTS				
BA-0067	New Orleans to Venice	23-Nov-11	26-Dec-23	\$1,301,523,760
BA-0109	HSDRRS Mitigation - WBV ²	27-Feb-15	15-Dec-20	\$126,000,000
BA-0154	Previously Authorized Mitigation WBV ²	04-Aug-14	1-Jul-20	\$11,000,000
PO-0057	SELA- Overall	18-Feb-09	5-Apr-22	\$1,170,974,586
PO-0062	West Shore-Lake Pontchartrain	11-Nov-20	19-Jul-23	\$760,000,000
PO-0121	HSDRRS Mitigation - LPV ³	23-Jul-15	24-Jul-20	\$85,000,000
DEEPWATER HORIZON NRDA PROJECTS				
AT-0019	Atchafayala Delta WMA Boat Access Project	27-Mar-20	7-Dec-20	\$920,450
AT-0020	Atchafayala Delta WMA Campground Improvements	27-Mar-20	27-Oct-20	\$3,248,000
BA-0197	West Grand Terre Beach Nourishment	19-Dec-19	20-Jan-22	\$99,700,000
BA-0203	Barataria Basin Ridge and Marsh Creation - Spanish Pass Increment	02-Jul-20	27-Sep-22	\$124,500,000
BA-0207	Large-Scale Barataria Marsh Creation	01-Oct-20	2-Sep-22	\$178,251,000
BA-0213	Bayou Segnette State Park Improvements	01-Apr-20	12-May-21	\$2,126,724
BA-0214	Grand Isle State Park Improvements	12-Aug-19	31-Aug-21	\$6,126,967
BA-0240	Grande Cheniere Ridge Marsh Creation	12-Feb-21	12-Dec-22	\$65,000,000
CS-0080	Rabbit Island Restoration Project	19-Mar-20	13-May-21	\$27,000,000
MR-0169	Pass a Loutre Crevasses NRDA	17-Sep-19	15-Dec-20	\$1,568,000
MR-0170	Pass a Loutre Campgrounds NRDA	17-Sep-19	15-Dec-20	\$1,624,000
PO-0163	Golden Triangle Marsh Creation	01-Sep-20	30-Dec-22	\$54,550,330
PO-0174	Biloxi Marsh Living Shoreline Project	21-Oct-20	13-Oct-22	\$57,719,731
PO-0180	Lake Borgne Marsh Creation - Increment One	01-Sep-20	27-Jul-23	\$127,000,000
PR-0001	Middle River Pearl River Wildlife Management Area Boat Launch	18-Apr-20	12-Feb-21	\$575,000
TE-0144	Island Road Fishing Piers	09-Sep-19	24-Oct-20	\$3,000,000
TE-0146	Pointe-aux-Chenes WMA Enhancements	01-Apr-20	15-Jun-21	\$5,000,000
TV-0081	Cypremort Point State Park Improvements	17-Jul-20	30-Aug-21	\$4,477,338
NFWF PROJECTS				
TE-0143	Terrebonne Basin Barrier Island	18-Jun-19	15-Oct-21	\$167,753,594
RESTORE PROJECTS				
PO-0029	River Reintroduction into Maurepas Swamp	30-Jun-21	1-Jan-24	\$199,854,326
TE-0113	Houma Navigation Canal Lock Complex	10-Jun-20	29-Jun-23	\$357,784,732
GOMESA PROJECTS				
AT-0017	Bayou Chene Floodgate	07-Jan-20	26-Oct-21	\$80,000,000
BA-0218	Levee Improvements for Gheens Community	15-Jul-19	15-Sep-20	\$2,127,992
BA-0221	Pumping Capacity Improvements Phase I	21-Apr-20	25-Aug-22	\$65,000,000
BA-0231	Storm Surge Risk Reduction for Section E-North- Elevation to +14.5 ft	09-Mar-20	9-Feb-21	\$1,500,000
BA-0232	Des Allemands FDA Pump Station Rehabilitation	17-Dec-19	6-Jan-21	\$762,595
BA-0244	T-Wall Kellogg Pump Station	In Development	In Development	\$2,500,000
BA-0246	Storm Surge Risk Reduction for Section D-South Elevation to +18 ft	In Development	In Development	\$1,300,000
BA-0247	Floodwall Improvements for Section D-South at Crawfish Pond	In Development	In Development	\$1,000,000
TE-0148	40 Arpent Canal Levee - Lockport Company Canal to Butch Hill Station	19-Aug-19	12-Jan-21	\$10,386,418
TE-0151	Grand Bayou Floodgate	12-Feb-20	6-Oct-21	\$18,500,000
TE-0152	Storm Surge Risk Reduction for US-90 at Bayou Folse	16-Jan-20	8-Jan-21	\$1,804,148
TE-0158	Reach L Mitigation	In Development	In Development	\$1,000,000
TE-0159	Elliot Jones Pump Station	In Development	In Development	\$10,000,000
TV-0085	Yokley Levee	In Development	In Development	\$3,000,000

1. Construction start date is defined as projected date for advertisement of construction bid notice; actual date of mobilization may vary.

2. Project cost included in total cost for WBV (BA-0066).

3. Project cost included in total cost for LPV (PO-0063).

PROJECTED ACTIVE PROJECT SCHEDULES

TABLE 2: PROJECTED THREE-YEAR SCHEDULES FOR ACTIVE CWPRA PROJECTS (FY 2021 - 2023)

ID	Project Name	Federal Sponsor	2020		2021				2022				2023	
			1FQ 2021	2FQ 2021	3FQ 2021	4FQ 2021	1FQ 2022	2FQ 2022	3FQ 2022	4FQ 2022	1FQ 2023	2FQ 2023	3FQ 2023	4FQ 2023
CWPRA PHASE I PROJECTS														
BA-0194	East Leeville Marsh Creation and Nourishment	NOAA	D	D	W	W	W	W	W	W	W	W	W	W
BS-0024	Terracing and Marsh Creation South of Big Mar	USFWS	D	D	W	W	W	W	W	W	W	W	W	W
BS-0032	Mid Breton Land Bridge Marsh Creation & Terracing	USFWS	D	D	W	W	W	W	W	W	W	W	W	W
CS-0078	No Name Bayou Marsh Creation & Nourishment	NOAA	D	D	W	W	W	W	W	W	W	W	W	W
CS-0079	Oyster Lake Marsh Creation and Nourishment	NOAA	D	D	W	W	W	W	W	W	W	W	W	W
PO-0133	Labranche Central Marsh Creation	NRCS	D	D	W	W	W	W	W	W	W	W	W	W
PO-0178	Bayou La Loutre Ridge Restoration and Marsh Creation	NRCS	D	D	W	W	W	W	W	W	W	W	W	W
PO-0179	St. Catherine Island Marsh Creation and Shoreline Protection	USFWS	D	D	W	W	W	W	W	W	W	W	W	W
TE-0112	North Catfish Lake Marsh Creation	NRCS	D	D	W	W	W	W	W	W	W	W	W	W
TE-0117	Island Road Marsh Creation and Nourishment	NOAA	D	D	W	W	W	W	W	W	W	W	W	W
BA-0206	Northeast Turtle Bay Marsh Creation & Critical Area Shoreline Protection	NRCS	D	D	D	D	D	D	W	W	W	W	W	W
PO-0173	Fritchie Marsh Creation and Terracing	NOAA	D	D	D	D	D	D	W	W	W	W	W	W
PO-0181	Bayou Cane Marsh Creation	USFWS	D	D	D	D	D	D	W	W	W	W	W	W
ME-0031	Freshwater Bayou Marsh Creation (CWPRA)	NRCS	D	D	D	D	D	D	W	W	W	W	W	W
BA-0217	Grand Bayou Ridge and Marsh Creation	NOAA	D	D	D	D	D	D	W	W	W	W	W	W
CS-0081	Sabine Refuge Marsh Creation Cycles 6 & 7	USFWS	D	D	D	D	D	D	W	W	W	W	W	W
BS-0037	East Delacroix Marsh Creation and Terracing	NOAA	D	D	D	D	D	D	W	W	W	W	W	W
CS-0085	Long Point Bayou Marsh Creation	EPA	D	D	D	D	D	D	W	W	W	W	W	W
BS-0038	Breton Landbridge Marsh Creation (West)	NOAA	D	D	D	D	D	D	D	D	D	D	W	W
ME-0032	South Grand Chenier Marsh Creation - Baker Tract	NRCS	D	D	D	D	D	D	D	D	D	D	W	W
BS-0041	North Delacroix Marsh Creation and Terracing	NOAA	D	D	D	D	D	D	D	D	D	D	W	W
BS-0042	Phoenix Marsh Creation- East Increment	USFWS	D	D	D	D	D	D	D	D	D	D	W	W
TE-0156	Bay Raccourci Marsh Creation and Ridge Restoration	USFWS	D	D	D	D	D	D	D	D	D	D	W	W
TE-0157	East Catfish Lake Marsh Creation and Shoreline Protection	USFWS	D	D	D	D	D	D	D	D	D	D	D	D
BA-0195	Barataria Bay Rim Marsh Creation and Nourishment	NRCS	W	W	W	W	W	W	W	W	W	W	W	W
PO-0034	Alligator Bend Marsh Restoration and Shoreline Protection	NRCS	W	W	W	W	W	W	W	W	W	W	W	W
CWPRA PHASE II PROJECTS														
BA-0125	Northwest Turtle Bay Marsh Creation	USFWS	C	F										
CS-0049	Cameron-Creole Freshwater Introduction	NRCS	C	C	C	C	F							
PO-0169	New Orleans Landbridge Shoreline Stabilization & Marsh Creation	USFWS	C	C	C	C	F							
TE-0138	Bayou DeCade Ridge and Marsh Creation	NOAA	C	C	C	C	F							
BA-0171	Caminada Headland Back Barrier Marsh Creation	EPA	C	C	C	C	C	F						
CS-0066	Cameron Meadows Marsh Creation and Terracing	NOAA	C	C	C	C	C	C	C	F				
ME-0020	South Grand Chenier Marsh Creation Project	USFWS	D	D	B	C	C	C	F					
PO-0075	LaBranche East Marsh Creation	NRCS	D	D	D	C	C	C	C	C	C	F		
TE-0134	West Fourchon Marsh Creation	NOAA	D	D	D	D	C	C	C	C	C	F		

P Feasibility & Planning
 W Awaiting Additional Funding for Implementation
 F Construction Complete
 D Engineering & Design
 C Construction
 B Both Design & Construction
 I Program Implementation

TABLE 3: PROJECTED THREE-YEAR SCHEDULES FOR ACTIVE WRDA PROJECTS (FY 2021 - 2023)

ID	Project Name	Federal Sponsor	2020		2021				2022				2023	
			1FQ 2021	2FQ 2021	3FQ 2021	4FQ 2021	1FQ 2022	2FQ 2022	3FQ 2022	4FQ 2022	1FQ 2023	2FQ 2023	3FQ 2023	4FQ 2023
LCA PROJECTS														
PO-0068	LCA Small Diversion at Convent / Blind River ¹	USACE	W	W	W	W	W	W	W	W	W	W	W	W
LCA PROJECTS														
BA-0210	Grand Isle & Vicinity Breakwaters ¹	USACE	C	C	C	C	C	F						
LA-0020	Southwest Coastal Louisiana ²	USACE	D	D	D	D	D	D	D	W	W	W	W	W
1. Project partially funded by GOMESA funds. 2. Project partially funded by Surplus funds.														

TABLE 4: PROJECTED THREE-YEAR SCHEDULES FOR ACTIVE STATE-ONLY PROJECTS (FY 2021 - 2023)

ID	Project Name	Federal Sponsor	2020		2021				2022				2023	
			1FQ 2021	2FQ 2021	3FQ 2021	4FQ 2021	1FQ 2022	2FQ 2022	3FQ 2022	4FQ 2022	1FQ 2023	2FQ 2023	3FQ 2023	4FQ 2023
STATE SURPLUS PROJECTS (2007, 2008, 2009)														
BA-0233	Grand Isle Bayside Breakwater ¹	N/A	F											
BA-0075-1	Jean Lafitte Tidal Protection	N/A	C	F										
TE-0153	LaCache Pump Station	N/A	C	F										
PO-0001	Violet Canal Repairs	N/A	C	C	C	F								
PO-0185	St. Bernard Pump Station Repairs	N/A	C	C	C	F								
TE-0154	Larose to Golden Meadow System Improvements	N/A	C	C	C	C	F							
BA-0075-2	Rosethorne Tidal Protection ^{1,2}	N/A	C	C	C	C	C	C	F					
TE-0064	Morganza to the Gulf ²	USACE	C	C	C	C	C	C	C	F				
TV-0077	North Vermilion Bay Shoreline Protection ^{3,4}	N/A	D	D	D	B	C	C	C	C	F			
TV-0082	Freshwater Bayou Shoreline Protection	N/A	D	D	D	D	B	C	C	C	F			
MR-0172	South Pass Bird Enhancement	N/A	D	D	D	D	C	C	C	C	C	C	C	C
PO-0167	St. Tammany Parish Coastal Protection Study	N/A	P	P	P	P	P							
STATE SURPLUS PROJECTS (2018)														
ME-0037	Rockefeller Refuge Shoreline Protection	N/A	C	C	C	F								
STATE SURPLUS PROJECTS (2019) ⁴														
CS-0086	Cameron Parish Gulf Shoreline Protection	N/A												
PO-0187	Jefferson Parish Lakefront Project	N/A												
PO-0188	Chandeleur Islands Restoration	N/A												
TE-0160	South Lafourche Levee Improvements	N/A												
TE-0161	North Lafourche Levee Improvements	N/A												
CAPITAL OUTLAY PROJECTS														
AT-0023	Henderson Lake Water Management Unit Spoil Bank Gapping ^{4,5}	N/A	C	C	C	F								
N/A	Murphy Lake Depth Restoration ^{4,5}	N/A	C	C	C	F								
N/A	Buffalo Cove Water Management ^{4,5}	N/A	C	C	C	F								
AT-0022	East Grand Lake Upper Region ^{4,5}	N/A	C	C	C	C	C	F						
TE-0142	Flat Lake Study ^{4,5}	N/A	P	P	P	P								
1. Project partially funded by GOMESA funds. 2. Project partially funded by GOMESA and Capital Outlay funds. 3. Project proposed to receive supplemental funding from 2019 Surplus funds. 4. 2019 Surplus funding is subject to legislative approval; project schedules under development. 5. Project implemented through the Atchafalaya Basin Program.														

P Feasibility & Planning
 W Awaiting Additional Funding for Implementation
 F Construction Complete
 D Engineering & Design
 C Construction
 B Both Design & Construction
 I Program Implementation

TABLE 5: PROJECTED THREE-YEAR SCHEDULES FOR ACTIVE HSDRRS & OTHER FEDERAL PROTECTION PROJECTS (FY 2021 - 2023)¹

ID	Project Name	Federal Sponsor	2020		2021				2022				2023	
			1FQ 2021	2FQ 2021	3FQ 2021	4FQ 2021	1FQ 2022	2FQ 2022	3FQ 2022	4FQ 2022	1FQ 2023	2FQ 2023	3FQ 2023	4FQ 2023
BA-0154	Previously Authorized Mitigation - WBV ^{2,3}	USACE	F											
PO-0121	HSDRRS Mitigation - LPV ^{2,3}	USACE	F											
BA-0109	HSDRRS Mitigation - WBV ^{2,3}	USACE	C	F										
PO-0057	SELA- Overall ^{2,3}	USACE	C	C	C	C	C	C	C	F				
BA-0067	New Orleans to Venice ^{2,3,4}	USACE	C	C	C	C	C	C	C	C	C	C	C	C
PO-0062	West Shore Lake Pontchartrain, Louisiana Hurricane Protection ¹⁴	USACE	D	B	B	B	B	B	C	C	C	C	C	C
BA-0158	New Orleans to Venice Mitigation - Plaquemines Non-Federal ^{2,3}	USACE	P	P	D	D	D	D	C	C	C	C	C	C
BA-0159	New Orleans to Venice Mitigation - Federal ^{2,3}	USACE	P	P	D	D	D	D	C	C	C	C	C	C
BA-0211	Upper Barataria Basin Flood Management	USACE	P	P	P	P	P	P	P	P				
BA-0212	WBV Risk Reduction	USACE	P	P	P	P	P	P	P	P				
PO-0182	LPV Risk Reduction	USACE	P	P	P	P	P	P	P	P				
TV-0054	South Central Coastal Plan	USACE	P	P	P	P	P	P	P	P				
PO-0186	St. Tammany Risk Reduction	USACE	P	P	P	P	P	P	P	P	P	P	P	P
Not Avail.	USACE Bayou Courtableau and Bayou Des Glaises	USACE	P	P	P	P	P	P	P	P	P	P	P	P
1. OM&M duties are the responsibility of the local sponsor. 2. Schedule based on USACE estimates. 3. State expenditures may be covered with Surplus allocation for HSDRRS LERRDS. 4. Project partially funded by GOMESA funds.														

TABLE 6: PROJECTED THREE-YEAR SCHEDULES FOR ACTIVE GOMESA PROJECTS (FY 2021 - 2023)

ID	Project Name	Federal Sponsor	2020		2021				2022				2023	
			1FQ 2021	2FQ 2021	3FQ 2021	4FQ 2021	1FQ 2022	2FQ 2022	3FQ 2022	4FQ 2022	1FQ 2023	2FQ 2023	3FQ 2023	4FQ 2023
BA-0218	Levee Improvements for Gheens Community	BOEM	F											
BA-0231	Storm Surge Risk Reduction for reach E-North - Elevation to +14.5 ft	BOEM	C	C	F									
BA-0232	Des Allemands FDA Pump Station Rehabilitation	BOEM	C	C	F									
TE-0148	40 Arpent Canal Levee - Lockport Co. Canal to Butch Hill Station	BOEM	C	C	F									
TE-0152	Storm Surge Risk Reduction for US-90 at Bayou Folse	BOEM	C	C	F									
BA-0244	T-Wall Kellogg Pump Station¹	BOEM	C	C	C	F								
BA-0246	Storm Surge Risk Reduction for reach D-South - Elevation to +18 ft¹	BOEM	C	C	C	F								
BA-0247	Floodwall Improvement for reach D-South at Crawfish Farm¹	BOEM	C	C	C	F								
TE-0158	Reach L Mitigation¹	BOEM	C	C	C	F								
TE-0159	Elliot Jones Pump Station¹	BOEM	C	C	C	F								
TV-0085	Yokley Levee¹	BOEM	C	C	C	F								
AT-0017	Bayou Chene Floodgate	BOEM	C	C	C	C	C	F						
TE-0151	Grand Bayou Floodgate	BOEM	C	C	C	C	C	F						
BA-0221	Pumping Capacity Improvements Phase 1	BOEM	C	C	C	C	C	C	C	C	F			
TE-0147	Hollywood Canal Closure Structure	BOEM	D	D	D	D	C	C	C	C	C	F		
BA-0223	Goose Bayou (Penn Levee)¹	BOEM	D	D	D	D	C	C	C	C	C	C	C	F
BA-0219	Davis Pond Upper Barataria Risk Reduction	BOEM	D	D	D	D	D	D	C	C	C	C	F	
BA-0243	100-yr Levee Lift; NOV-NF-W-4, Oakville to LaReusitte and MRL 1791	BOEM	D	D	D	D	D	D	D	D	C	C	C	F
BA-0222	NOV-NF Drainage Canal Relocation	BOEM	D											
BA-0220	Sunset Levee Upper Barataria Risk Reduction (UBRR)	BOEM	D	D	D	D	D	D	D					
PO-0184	St. Tammany Storm Surge Risk Reduction	BOEM	D	D	D	D	D	D	D	D				

TABLE 7: PROJECTED THREE-YEAR SCHEDULES FOR ACTIVE CDBG PROJECTS (FY 2021 - 2023)

ID	Project Name	Federal Sponsor	2020		2021				2022				2023	
			1FQ 2021	2FQ 2021	3FQ 2021	4FQ 2021	1FQ 2022	2FQ 2022	3FQ 2022	4FQ 2022	1FQ 2023	2FQ 2023	3FQ 2023	4FQ 2023
LA-0290	Statewide Floodplain Management (Watershed Initiative)	HUD	I	I	I	I	I	I	I	I	I	I	I	I

TABLE 8: PROJECTED THREE-YEAR SCHEDULES FOR ACTIVE AND PROPOSED OIL SPILL PROJECTS (FY 2021 - 2023)

ID	Project Name	Federal Sponsor	2020		2021				2022				2023	
			1FQ 2021	2FQ 2021	3FQ 2021	4FQ 2021	1FQ 2022	2FQ 2022	3FQ 2022	4FQ 2022	1FQ 2023	2FQ 2023	3FQ 2023	4FQ 2023
DEEPWATER HORIZON NRDA PROJECTS														
AT-0019	Atchafalaya WMA Boat Launch	N/A	C	F										
AT-0020	Atchafalaya WMA Campground Improvements	N/A	C	F										
MR-0169	Pass-a-Loutre Crevasses NRDA	N/A	C	F										
MR-0170	Pass-a-Loutre Campgrounds NRDA	N/A	C	F										
TE-0144	Island Road Fishing Piers	N/A	C	F										
PR-0001	Middle Pearl River WMA Boat Launch	N/A	C	C	F									
BA-0213	Bayou Segnette State Park Improvements	N/A	C	C	C	F								
CS-0080	Rabbit Island Restoration	N/A	C	C	C	F								
TE-0146	Pointe-aux-Chenes WMA Enhancements	N/A	C	C	C	F								
BA-0214	Grand Isle State Park Improvements	N/A	C	C	C	C	F							
TV-0081	Cypremort Point State Park Improvements	N/A	B	B	C	C	F							
PO-0163	Golden Triangle Marsh Creation¹	N/A	C	C	C	C	C	F						
BA-0197	West Grand Terre Beach Nourishment and Stabilization¹	N/A	C	C	C	C	C	C	F					
BA-0203	Barataria Basin Ridge and Marsh Restoration - Spanish Pass Increment	N/A	C	C	C	C	C	C	C	C	F			
BA-0207	Large-Scale Barataria Marsh Creation	N/A	D	C	C	C	C	C	C	C	F			
PO-0174	Biloxi Marsh Living Shoreline Project¹	N/A	D	D	C	C	C	C	C	C	C	F		
BA-0240	Grande Cheniere Ridge Marsh Creation	N/A	D	D	C	C	C	C	C	C	C	F		
PO-0180	Lake Borgne Marsh Creation- Increment 1	N/A	D	C	C	C	C	C	C	C	C	C	C	C
TE-0139	Terrebonne Basin Ridge and Marsh Creation - Bayou Terrebonne Increment	N/A	D	D	D	D	D	D	C	C	C	C	C	C
NFWF PROJECTS														
TE-0143	Terrebonne Basin Barrier Island and Beach Nourishment	N/A	C	C	C	C	C	F						
TE-0110	Increase Atchafalaya Flow to Eastern Terrebonne	N/A	D	D	D	D	D	D	D	W	W	W	W	W
BA-0153	Mid-Barataria Sediment Diversion	N/A	D	D	D	D	D	D	D	D	W	W	W	W
BS-0030	Mid-Breton Sediment Diversion	N/A	D	D	D	D	D	D	D	D	D	D	D	D
LA-0276	Sediment Diversion Implementation and Program Management	N/A	I	I	I	I	I	I						
RESTORE PROJECTS														
CS-0065	Calcasieu Ship Channel Salinity Control Measures	N/A	D	D	D	D	D	D	D	D	C	C	C	C
TE-0113	Houma Navigation Canal Lock Complex	N/A	C	C	C	C	C	C	C	C	C	C	C	F
PO-0029	River Reintroduction into Maurepas Swamp	N/A	D	D	D	B	B	B	C	C	C	C	C	C
MR-0168	Lowermost Mississippi River Management Program	N/A	P	P	P	P	P	P	P	P				
N/A	Parish Matching Program	N/A	I	I	I	I	I	I	I	I	I	I	I	I

P Feasibility & Planning
 W Awaiting Additional Funding for Implementation
 F Construction Complete
 D Engineering & Design
 C Construction
 B Both Design & Construction
 I Program Implementation

MAP 2: ACTIVE PROJECTS IN FY 2021 - SOUTHWEST REGION

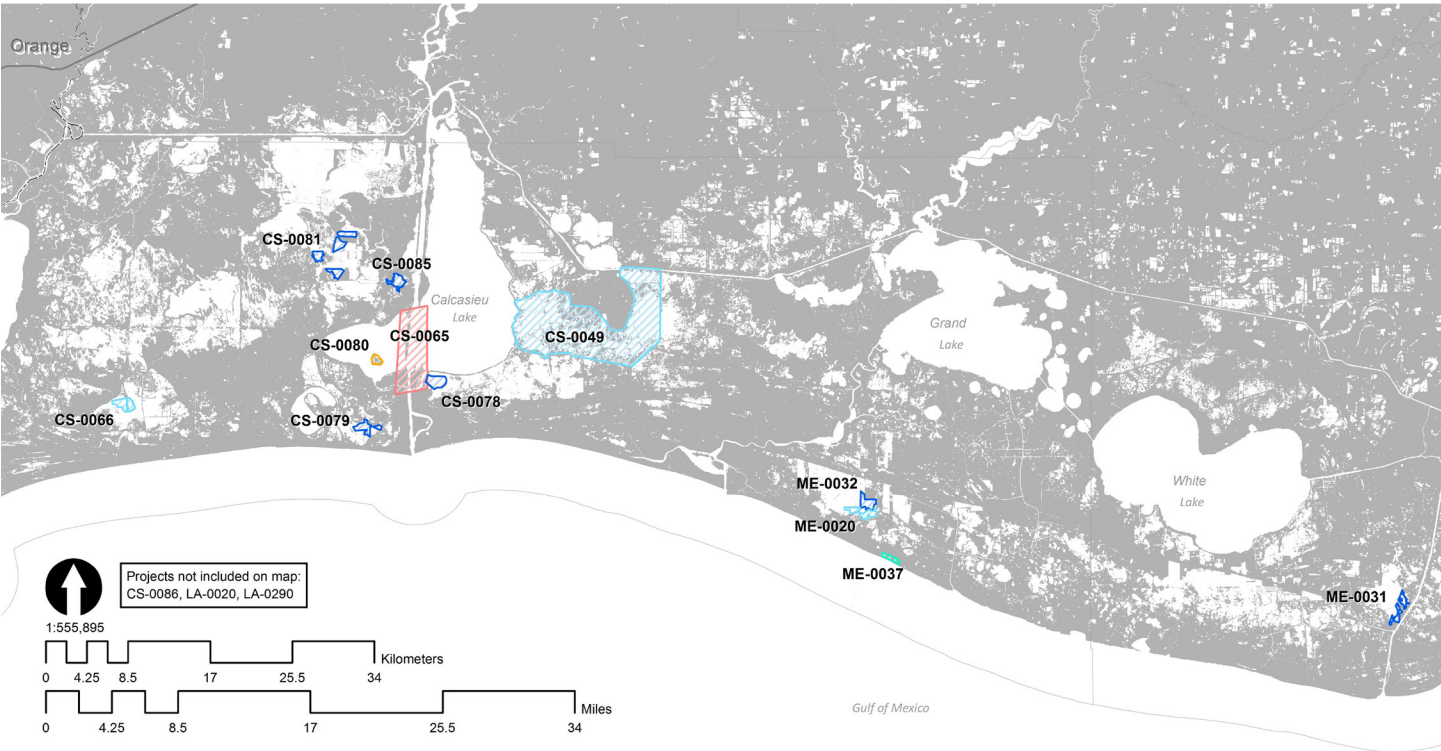


TABLE 9: ACTIVE PROJECTS IN FY 2021 - SOUTHWEST REGION

ID	Project Name	Active Phase FY 2021	Total Project Value
CWPPRA PHASE I PROJECTS			
CS-0078	No Name Bayou Marsh Creation & Nourishment	E&D	\$29,503,137
CS-0079	Oyster Lake Marsh Creation and Nourishment	E&D	\$38,073,046
CS-0081	Sabine Refuge Marsh Creation Cycles 6 & 7	E&D	\$13,759,428
CS-0085	Long Point Bayou Marsh Creation	E&D	\$11,943,904
ME-0031	Freshwater Bayou Marsh Creation (CWPPRA)	E&D	\$26,756,513
ME-0032	South Grand Chenier Marsh Creation - Baker Tract	E&D	\$26,691,833
CWPPRA PHASE II PROJECTS			
CS-0049	Cameron-Creole Freshwater Introduction	CON	\$26,776,735
CS-0066	Cameron Meadows Marsh Creation and Terracing	CON	\$32,081,560
ME-0020	South Grand Chenier Marsh Creation Project	CON	\$23,873,346
WRDA PROJECTS			
LA-0020	Southwest Coastal Louisiana Feasibility Study	E&D	\$3,392,226,000
STATE-ONLY PROJECTS			
CS-0086	Cameron Parish Gulf Shoreline Protection	CON	\$2,000,000
ME-0037	Rockefeller Refuge Shoreline Protection	CON	\$9,270,263
DEEPWATER HORIZON NRDA PROJECTS			
CS-0080	Rabbit Island Restoration	CON	\$27,000,000
RESTORE PROJECTS			
CS-0065	Calcasieu Ship Channel Salinity Control Measures	E&D	\$263,751,502

MAP 3: ACTIVE PROJECTS IN FY 2021 - SOUTHCENTRAL REGION

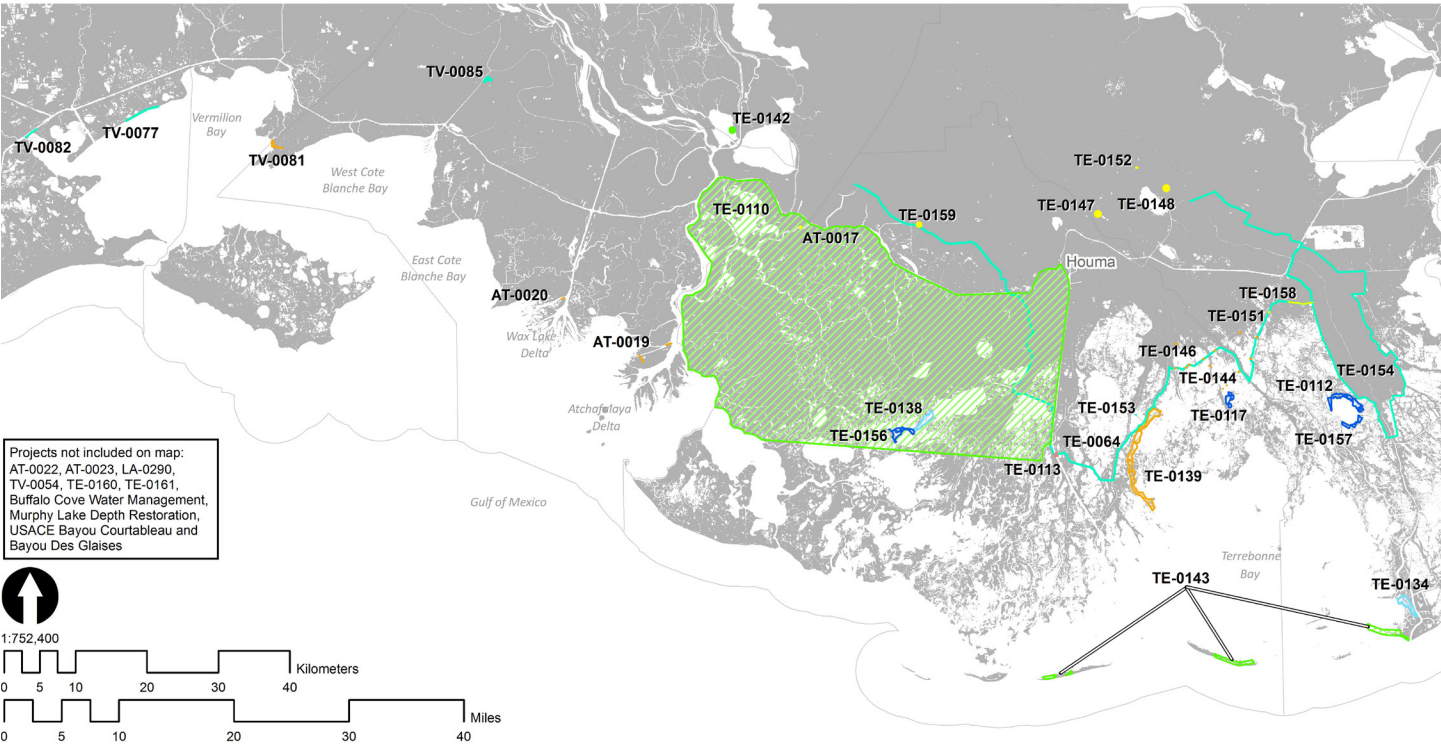


TABLE 10: ACTIVE PROJECTS IN FY 2021 - SOUTHCENTRAL REGION

ID	Project Name	Active Phase FY 2021	Total Project Value
CWPPRA PHASE I PROJECTS			
TE-0112	North Catfish Lake Marsh Creation	E&D	\$31,635,887
TE-0117	Island Road Marsh Creation and Nourishment	E&D	\$40,435,267
TE-0156	Bay Raccourci Marsh Creation and Ridge Restoration	E&D	\$39,837,121
TE-0157	East Catfish Lake Marsh Creation and Shoreline Protection	E&D	\$42,277,142
CWPPRA PHASE II PROJECTS			
TE-0134	West Fourchon Marsh Creation	E&D	\$30,655,764
TE-0138	Bayou DeCade Ridge and Marsh Creation	CON	\$24,781,121
STATE-ONLY PROJECTS			
AT-0022	East Grand Lake Upper Region	CON	\$3,589,120
AT-0023	Henderson Lake Water Management Unit Spoil Bank Gapping	CON	\$500,000
TE-0064	Morganza to the Gulf	CON	\$391,600,000
TE-0142	Flat Lake Study	PLN	\$300,000
TE-0153	LaCache Pump Station	CON	\$2,000,000
TE-0154	Larose to Golden Meadow Improvements	CON	\$5,600,000
TE-0160	South Lafourche Levee Improvements	CON	\$4,000,000
TE-0161	North Lafourche Levee Improvements	CON	\$3,000,000
TV-0077	North Vermilion Bay Shoreline Protection	CON	\$7,900,000
TV-0082	Freshwater Bayou Shoreline Protection	E&D	\$3,671,432
N/A	Murphy Lake Depth Restoration	CON	\$300,000
N/A	Buffalo Cove Water Management	CON	\$300,000
HSDRRS AND OTHER FEDERAL PROTECTION PROJECTS			
TV-0054	South Central Coastal Plan	PLN	\$3,000,000
Not Avail.	USACE Bayou Courtableau and Bayou Des Glaisses	PLN	\$3,000,000
DEEPWATER HORIZON NRDA PROJECTS			
AT-0019	Atchafalaya WMA Boat Launch	CON	\$920,450
AT-0020	Atchafalaya WMA Campground Improvements	CON	\$3,248,000
TE-0139	Terrebonne Basin Ridge and Marsh Creation - Bayou Terrebonne Increment	E&D	\$125,450,000
TE-0144	Island Road Fishing Piers	CON	\$3,000,000
TE-0146	Pointe-aux-Chenes WMA Enhancements	CON	\$5,000,000
TV-0081	Cypremort Point State Park Improvements	CON	\$4,477,338
NFWF PROJECTS			
TE-0110	Increase Atchafalaya Flow to Eastern Terrebonne	E&D	\$415,215,000
TE-0143	Terrebonne Basin Barrier Island and Beach Nourishment	CON	\$167,753,594
RESTORE PROJECTS			
TE-0113	Houma Navigation Canal Lock Complex	CON	\$357,784,732
GOMESA PROJECTS			
AT-0017	Bayou Chene Option 1	CON	\$80,000,000
TE-0147	Hollywood Canal Closure Structure	E&D	\$6,792,000
TE-0148	40 Arpent Canal Levee - Lockport Co. Canal to Butch Hill Station	CON	\$10,386,418
TE-0151	Grand Bayou Floodgate	CON	\$18,500,000
TE-0152	Storm Surge Risk Reduction for US-90 at Bayou Folse	CON	\$1,804,148
TE-0158	Reach L Mitigation	CON	\$1,000,000
TE-0159	Elliot Jones Pump Station	CON	\$10,000,000
TV-0085	Yokley Levee	CON	\$3,000,000

MAP 4: ACTIVE PROJECTS IN FY 2021 - SOUTHEAST REGION

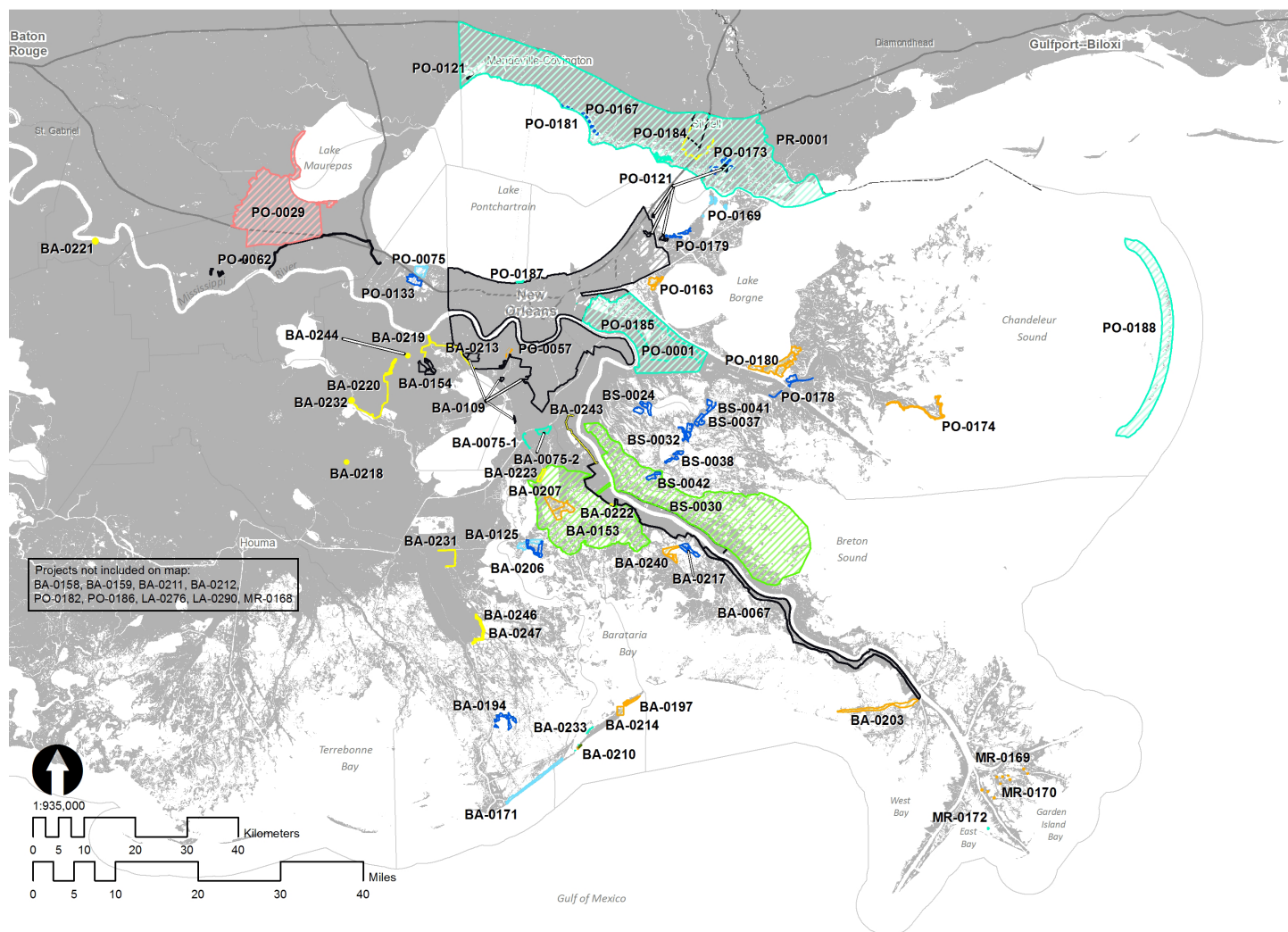


TABLE 11: ACTIVE PROJECTS IN FY 2021 - SOUTHEAST REGION

ID	Project Name	Active Phase FY 2021	Total Project Value
CWPPRA PHASE I PROJECTS			
BA-0194	East Leeville Marsh Creation and Nourishment	E&D	\$35,066,972
BA-0206	Northeast Turtle Bay Marsh Creation & Critical Area Shoreline Protection	E&D	\$43,482,092
BA-0217	Grand Bayou Ridge and Marsh Creation	E&D	\$40,235,427
BS-0024	Terracing and Marsh Creation South of Big Mar	E&D	\$24,942,706
BS-0032	Mid Breton Land Bridge Marsh Creation & Terracing	E&D	\$40,822,269
BS-0037	East Delacroix Marsh Creation and Terracing	E&D	\$37,816,133
BS-0038	Breton Landbridge Marsh Creation (West)	E&D	\$36,413,043
BS-0041	North Delacroix Marsh Creation and Terracing	E&D	\$35,521,865
BS-0042	Phoenix Marsh Creation - East Increment	E&D	\$33,901,557
PO-0133	Labranche Central Marsh Creation	E&D	\$43,409,208
PO-0173	Fritchie Marsh Creation and Terracing	E&D	\$29,867,440
PO-0178	Bayou La Loutre Ridge Restoration and Marsh Creation	E&D	\$31,012,138
PO-0179	St. Catherine Island Marsh Creation and Shoreline Protection	E&D	\$25,324,715
PO-0181	Bayou Cane Marsh Creation	E&D	\$31,600,635
CWPPRA PHASE II PROJECTS			
BA-0125	Northwest Turtle Bay Marsh Creation	CON	\$33,664,671
BA-0171	Caminada Headland Back Barrier Marsh Creation	CON	\$32,284,094
PO-0075	LaBranche East Marsh Creation	CON	\$33,555,033
PO-0169	New Orleans Landbridge Shoreline Stabilization & Marsh Creation	CON	\$25,446,125
WRDA PROJECTS			
BA-0210	Grand Isle & Vicinity Breakwaters	CON	\$15,000,000
STATE-ONLY PROJECTS			
BA-0075-1	Jean Lafitte Tidal Protection	CON	\$33,582,639
BA-0075-2	Rosethorne Tidal Protection	CON	\$24,930,787
BA-0233	Grand Isle Bayside Breakwater	CON	\$6,500,000
MR-0172	South Pass Bird Island Enhancement	E&D	\$1,250,000
PO-0001	Violet Canal Repairs	CON	\$1,000,000
PO-0167	St. Tammany Parish Coastal Protection Study	PLN	\$2,000,000
PO-0185	St. Bernard Pump Station Repairs	CON	\$4,000,000
PO-0187	Jefferson Parish Lakefront Project	CON	\$1,750,000
PO-0188	Chandeleur Island Restoration	PLN	\$3,000,000
HSDRRS AND OTHER FEDERAL PROTECTION PROJECTS			
BA-0067	New Orleans to Venice	CON	\$1,301,523,760
BA-0109	HSDRRS Mitigation- WBV	CON	\$126,000,000
BA-0154	Previously Authorized Mitigation WBV	CON	\$11,000,000
BA-0158	New Orleans to Venice Mitigation - Plaquemines Non-Federal	E&D	\$14,500,000
BA-0159	New Orleans to Venice Mitigation - Federal	E&D	\$30,000,000
BA-0211	Upper Barataria Basin Flood Management	PLN	\$3,000,000
BA-0212	WBV Risk Reduction	PLN	\$3,000,000
PO-0057	SELA- Overall	CON	\$1,170,974,586
PO-0062	West Shore-Lake Pontchartrain, Louisiana Hurricane Protection Project	CON	\$760,000,000
PO-0121	HSDRRS Mitigation - LPV	CON	\$85,000,000
PO-0182	LPV Risk Reduction	PLN	\$3,000,000
PO-0186	St. Tammany Parish Coastal Protection Study	PLN	\$3,000,000

MAP 4: ACTIVE PROJECTS IN FY 2021 - SOUTHEAST REGION

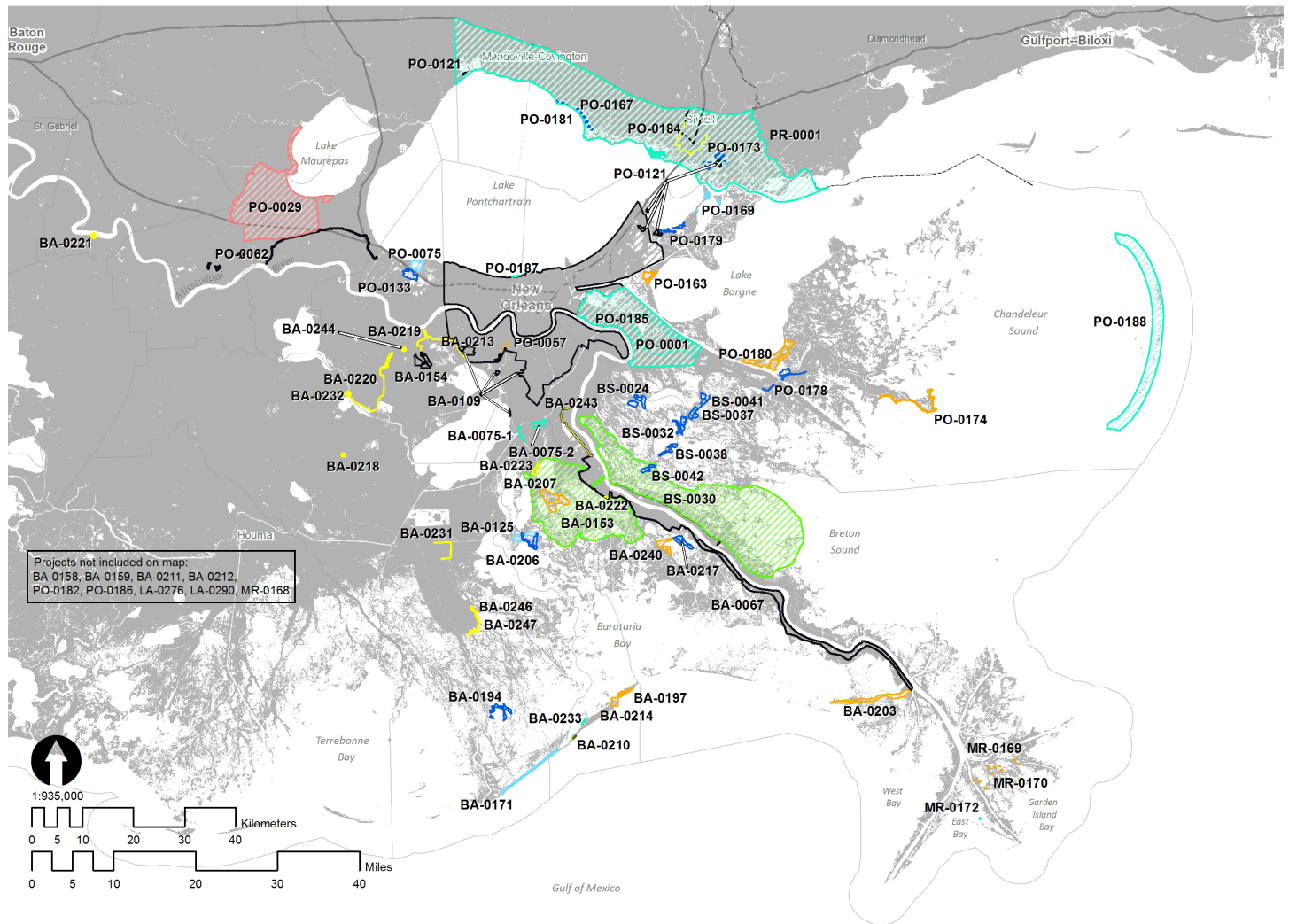


TABLE 11: ACTIVE PROJECTS IN FY 2021 - SOUTHEAST REGION (CONTINUED)

ID	Project Name	Active Phase FY 2021	Total Project Value
DEEPWATER HORIZON NRDA PROJECTS			
BA-0197	West Grand Terre Beach Nourishment and Stabilization	CON	\$99,700,000
BA-0203	Barataria Basin Ridge and Marsh Restoration - Spanish Pass Increment	CON	\$124,500,000
BA-0207	Large-Scale Barataria Marsh Creation	CON	\$178,251,000
BA-0213	Bayou Segnette State Park Improvements	CON	\$2,126,724
BA-0214	Grand Isle State Park Improvements	CON	\$6,126,967
BA-0240	Grande Cheniere Ridge and Marsh Creation	CON	\$65,000,000
MR-0169	Pass-a-Loutre Crevasses NRDA	CON	\$1,568,000
MR-0170	Pass-a-Loutre Campgrounds NRDA	CON	\$1,624,000
PO-0163	Golden Triangle Marsh Creation	CON	\$54,550,330
PO-0174	Biloxi Marsh Living Shoreline Project	CON	\$57,719,731
PO-0180	Lake Borgne Marsh Creation - Increment 1	CON	\$127,000,000
PR-0001	Middle Pearl River WMA Boat Launch	CON	\$575,000
NFWF PROJECTS			
BA-0153	Mid-Barataria Sediment Diversion	E&D	\$1,410,708,675
BS-0030	Mid-Breton Sediment Diversion	E&D	\$798,609,888
LA-0276	Sediment Diversion Implementation and Program Management	PROG	Not Avail.
RESTORE PROJECTS			
MR-0168	Lowermost Mississippi River Management Program	PLN	\$9,300,000
PO-0029	Mississippi River Reintroduction into Maurepas Swamp	CON	\$199,854,326
GOMESA PROJECTS			
BA-0218	Levee Improvements for Gheens Community	CON	\$2,127,992
BA-0219	Davis Pond Upper Barataria Risk Reduction	E&D	\$6,500,000
BA-0220	Sunset Levee Upper Barataria Risk Reduction	E&D	\$3,500,000
BA-0221	Pumping Capacity Improvements Phase 1	CON	\$65,000,000
BA-0222	NOV-NF Drainage Canal Relocation	E&D	\$7,500,000
BA-0223	Goose Bayou (Penn Levee)	E&D	\$24,100,000
BA-0231	Storm Surge Risk Reduction for Section E-North - Elevation to +14.5 ft	CON	\$1,500,000
BA-0232	Des Allemands FDA Pump Station Rehabilitation	CON	\$762,595
BA-0243	100-yr Levee Lift: NOV-NF-W-4, Oakville to LaReusitte and MRL 179	E&D	\$10,000,000
BA-0244	T-Wall Kellogg Pump Station	CON	\$2,500,000
BA-0246	Storm Surge Risk Reduction for Section D-South Elevation to +18 ft	CON	\$1,300,000
BA-0247	Storm Surge Risk Reduction for Section D-South at Crawfish Farm	CON	\$1,000,000
PO-0184	St. Tammany Storm Surge Risk Reduction	E&D	\$9,000,000

PROJECTED THREE-YEAR REVENUES & EXPENDITURES

TABLE 12: PROJECTED THREE-YEAR REVENUES (FY 2021 - 2023)

Revenue Sources	FY 2021	FY 2022	FY 2023	Program Total (FY 2021 - 2023)
CPR Trust Fund Annual Revenue ^{1,2}	\$25,000,000	\$25,000,000	\$25,000,000	\$75,000,000
CPR Trust Fund Carried Forward	\$10,369,927	\$11,572,661	\$8,044,302	\$29,986,890
CWPPRA Federal Funds ⁵	\$72,285,228	\$64,953,245	\$66,966,692	\$204,205,165
GOMESA ^{1,3}	\$120,000,000	\$70,000,000	\$100,000,000	\$290,000,000
GOMESA Carried Forward ⁴	\$23,973,910	\$15,900,371	\$59,553,760	\$99,428,041
DOTD Interagency Transfer ¹	\$4,000,000	\$4,000,000	\$4,000,000	\$12,000,000
Surplus Appropriations ⁶	\$208,054,143	\$38,144,781	\$11,086,951	\$257,285,875
Community Development Block Grants	\$2,011,680	\$2,000,000	\$2,000,000	\$6,011,680
MOEX Settlement ⁷	\$627,580	\$96,640	\$58,680	\$782,900
Capital Outlay Funds (Previously Appropriated)	\$10,553,472	\$4,982,648	TBD	\$15,536,120
NRDA Revenues (<i>Deepwater Horizon</i>)	\$319,599,061	\$620,041,661	\$516,024,779	\$1,455,665,501
NFWF Revenues (<i>Deepwater Horizon</i>)	\$168,587,674	\$83,847,778	\$27,233,428	\$279,668,880
RESTORE Revenues (<i>Deepwater Horizon</i>)	\$70,763,000	\$165,262,409	\$252,007,419	\$488,032,828
LDNR Mitigation Funds ⁸	\$500,000	\$500,000	\$500,000	\$1,500,000
LDNR Beneficial Use Funds ⁸	\$3,500,000	\$500,000	\$500,000	\$4,500,000
OM&M Federal Funds ⁹	\$20,486,319	\$15,204,483	\$13,057,714	\$48,748,516
LOSCO Funding ¹⁰	\$121,568	\$113,544	\$113,544	\$348,656
Gulf of Mexico Alliance Gulf Star Grant Funding ¹¹	\$12,000	\$0	\$0	\$12,000
LDWF/LOSCO/LDNR Funding ¹²	\$0	\$700,000	\$400,000	\$1,100,000
Project Billing ¹³	\$22,426,432	\$23,000,000	\$23,000,000	\$68,426,432
Total Projected Revenue¹⁴	\$1,082,871,993	\$1,145,820,221	\$1,109,547,269	\$3,338,239,484

1. Annually recurring revenue source to be spent in accordance with the Louisiana Constitution, specifically State Law Section 214.5.4(E) and the provisions within paragraph (3).
2. Estimate tied to mineral revenue.
3. GOMESA funds must be disbursed to the applicable states by the end of the federal fiscal year. FY 2021 GOMESA funds are anticipated to be received around April 2021 (4Q21).
4. Represents carry-forward of unexpended funds from prior-year GOMESA payments.
5. Represents anticipated Federal reimbursement for CWPPRA projects led by CPRA in which the State is initially incurring more than its 15% cost share during project implementation.
6. Includes funding from previously appropriated budget surpluses (2007, 2008, 2009, and 2018) as well as projected 2019 surplus funding announced by Governor Edwards in February 2020 (subject to Legislative approval in the 2020 session) (see Table 20 for details)
7. Represents anticipated balance as of FY 2021 of an initial deposit of \$6.75 million of funds from the MOEX settlement.
8. Supplemental funding to augment construction of eligible projects (specific projects to be determined at a later date).
9. Represents anticipated Federal reimbursement for CWPPRA and WRDA OM&M activities led by CPRA in which the State is initially incurring more than its cost share during project implementation.
10. Represents reimbursement of expenditures for CPRA (non-DWH) oil spill response activities.
11. Represents remaining balance of grant funding received in January 2018 for a pilot monitoring project.
12. Funding will be utilized for the implementation of South Pass Bird Island Enhancement (ME-0172).
13. Represents salary and other work-in-kind reimbursements for work performed on projects in funding programs listed in the table above.
14. New project opportunities may arise if additional funds become available after the approval of the FY 2021 Annual Plan, and conditions may necessitate reprogramming of existing funds to address changes on the ground. If necessary, reprogramming of existing and new funds would occur, with approval from the CPRA, to ensure that limited coastal program funds are allocated in accordance with Master Plan objectives. CPRA has been granted authority to reprogram dollars from approved funding streams and to reallocate dollars to best meet new opportunities or needs. Such flexibility allows the coastal program to respond effectively to unforeseen events that take place outside the legislatively mandated planning cycle.

TABLE 13: PROJECTED THREE-YEAR EXPENDITURES¹ (FY 2021 - 2023)

Revenue Sources	FY 2021	FY 2022	FY 2023	Program Total (FY 2021 - 2023)
CWPPRA State Expenditures (not including Surplus expenditures) ²	\$15,232,776	\$15,046,755	\$13,033,308	\$43,312,840
CWPPRA Federal Expenditures ³	\$72,285,228	\$64,953,245	\$66,966,692	\$204,205,165
GOMESA Expenditures	\$143,973,910	\$85,900,371	\$159,553,760	\$389,428,041
WRDA Project Expenditures (not including Surplus expenditures)	\$0	\$0	\$0	\$0
Surplus Projects and Program Expenditures ⁴	\$208,054,143	\$38,144,781	\$11,086,951	\$257,285,875
Community Development Block Grants	\$2,011,680	\$2,000,000	\$2,000,000	\$6,011,680
MOEX Project Expenditures	\$627,580	\$96,640	\$58,680	\$782,900
Capital Outlay Project Expenditures	\$10,553,472	\$4,982,648	TBD	\$15,536,120
State-Only Project Expenditures (Non-Surplus)	\$616,760	\$435,912	\$211,272	\$1,263,944
NRDA Expenditures (<i>Deepwater Horizon</i>)	\$319,599,061	\$620,041,661	\$516,024,779	\$1,455,665,501
NFWF Expenditures (<i>Deepwater Horizon</i>) (not including Surplus Expenditures)	\$168,587,674	\$83,847,778	\$27,233,428	\$279,668,880
RESTORE Expenditures (<i>Deepwater Horizon</i>) (not including Surplus Expenditures)	\$70,763,000	\$165,262,409	\$252,007,419	\$488,032,828
LDNR Mitigation Expenditures ⁵	\$500,000	\$500,000	\$500,000	\$1,500,000
LDNR Beneficial Use Expenditures ⁵	\$3,500,000	\$500,000	\$500,000	\$4,500,000
OM&M - State Expenditures (not including Surplus or GOMESA expenditures)	\$6,562,429	\$5,962,460	\$5,254,477	\$17,779,365
OM&M - Federal Expenditures ⁶	\$20,486,319	\$15,204,483	\$13,057,714	\$48,748,516
Gulf of Mexico Alliance Gulf Star Grant Expenditures	\$12,000	\$0	\$0	\$12,000
LDWF/LOSCO/LDNR Funding ⁷	\$0	\$700,000	\$400,000	\$1,100,000
State Programmatic/Adaptive Management Expenditures (see Table 14)	\$9,301,142	\$11,250,000	\$9,850,000	\$30,401,142
Operating Costs (see Tables 14 and 15) ^{8,9}	\$30,204,819	\$30,991,079	\$31,808,789	\$93,004,687
Total Planned Expenditures¹⁰	\$1,082,871,993	\$1,145,820,221	\$1,109,547,269	\$3,338,239,484

1. Represents proposed expenditures provided that commensurate level of funding is received.

2. Because CWPPRA projects compete for funding annually, CWPPRA expenditures as presented in Table 16 (which include projected expenditures for approved projects only) do not adequately capture likely CWPPRA expenditures in outlying years. The State's estimated CWPPRA expenditures for FY 2021 - FY 2022 are therefore based on prior years' expenditures.

3. Represents anticipated Federal reimbursement for CWPPRA projects led by CPRA in which the State is initially incurring more than its 15% cost share during project implementation.

4. Includes expenditures from previously appropriated budget surpluses (2007, 2008, 2009, and 2018) as well as projected 2019 surplus funding announced by Governor Edwards in February 2020 (subject to Legislative approval in the 2020 session) (see Table 20 for details).

5. Supplemental funding to augment construction of eligible projects (specific projects to be determined at a later date).

6. Represents anticipated Federal reimbursement for CWPPRA and WRDA OM&M activities led by CPRA in which the State is initially incurring more than its cost share during project implementation.

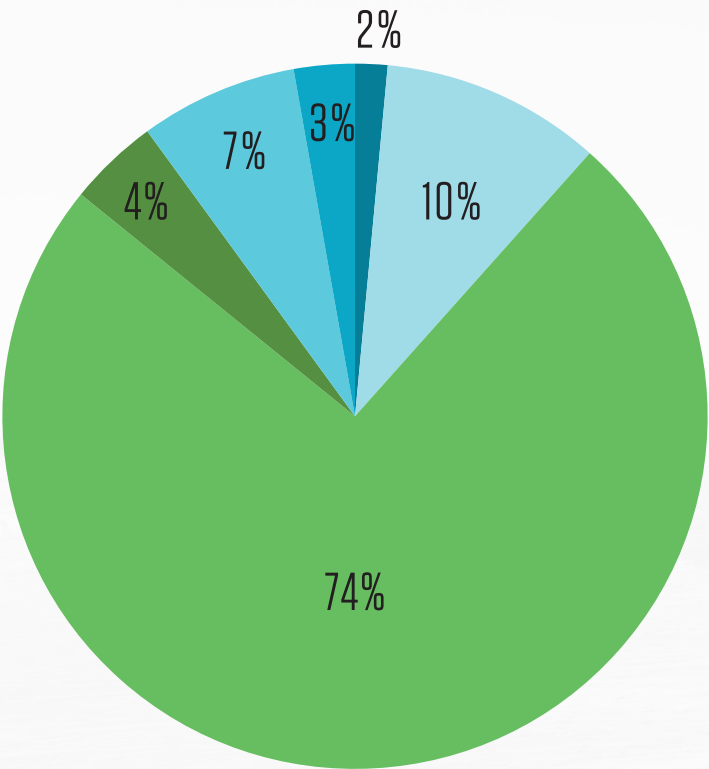
7. Funding will be utilized for the implementation of South Pass Bird Island Enhancement (ME-0172).

8. In the event of a declared emergency, CPRA may need to expend Operating Costs in support of the State's disaster response efforts. Up to 75 percent of these expenditures would be reimbursable by FEMA.

9. Operating Costs include Three-Year Operating Expenditures (see Table 15), Assistance to Levee Authorities (see Table 14), and Project Support (see Table 14).

10. New project opportunities may arise if additional funds become available after the approval of the FY 2021 Annual Plan, and conditions may necessitate reprogramming of existing funds to address changes on the ground. If necessary, reprogramming of existing and new funds would occur, with approval from the CPRA, to ensure that limited coastal program funds are allocated in accordance with Master Plan objectives. CPRA has been granted authority to reprogram dollars from approved funding streams and to reallocate dollars to best meet new opportunities or needs. Such flexibility allows the coastal program to respond effectively to unforeseen events that take place outside the legislatively mandated planning cycle.

FIGURE 1: PROJECTED FY 2021 EXPENDITURES BY PROJECT PHASE



PLANNING

\$16 MILLION

ENGINEERING
& DESIGN

\$110 MILLION

CONSTRUCTION

\$804 MILLION

OPERATION, MAINTENANCE
& MONITORING

\$44.9 MILLION

ONGOING PROGRAMS
& INITIATIVES

\$78.3 MILLION

OPERATING COSTS

\$30.2 MILLION

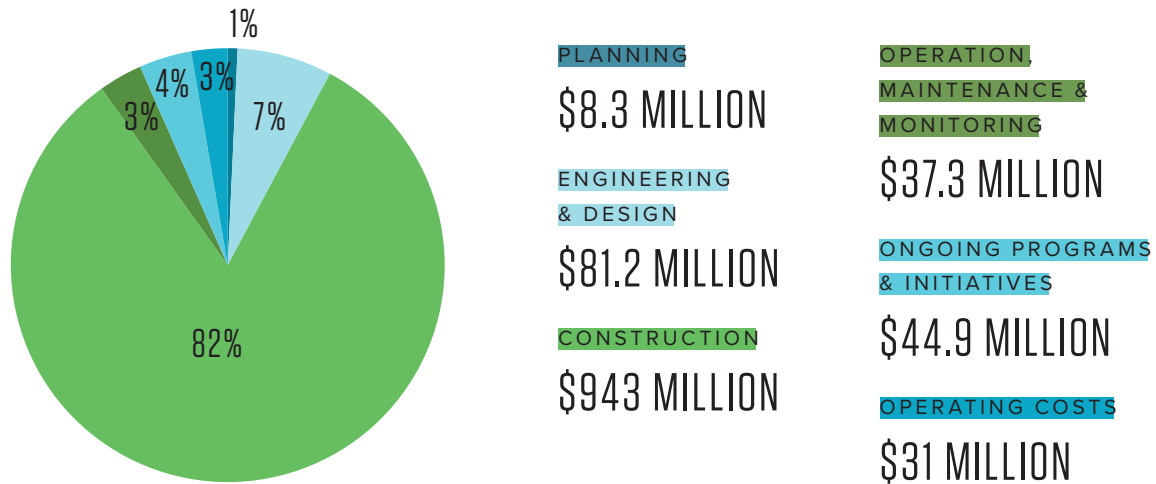
NOTES

- Construction includes Beneficial Use (\$2 million)
- OM&M includes BIMP (\$2.6 million) and Repair/Rehabilitation of Projects (\$1.1 million)
- Operating Costs include Assistance to Levee Authorities (\$1 million) and Project Support (\$5 million)

TOTAL EXPENDITURES

\$1.08 BILLION

FIGURE 2: PROJECTED FY 2022 EXPENDITURES BY PROJECT PHASE



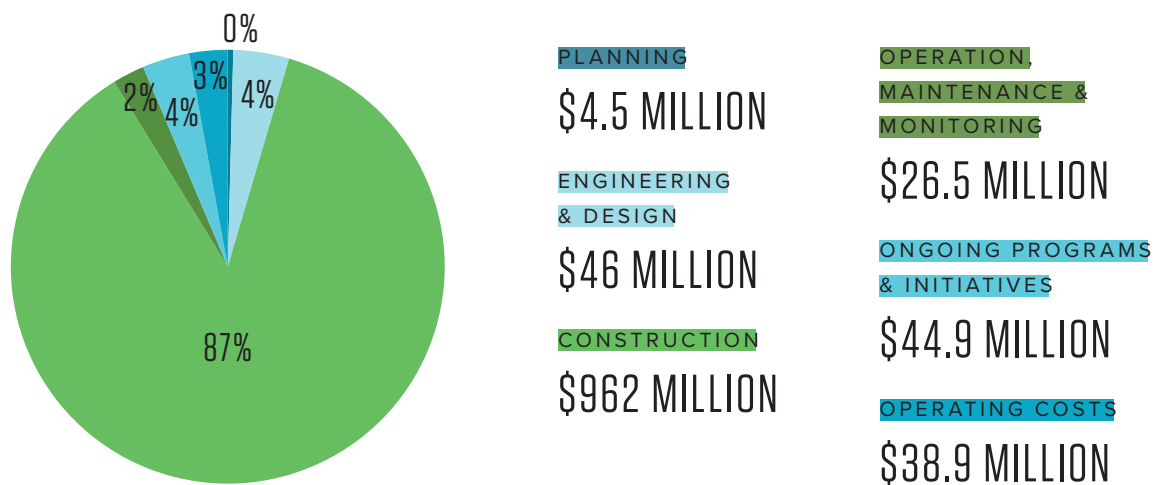
NOTES

- Construction includes Beneficial Use (\$2 million)
- Engineering and Design and Construction include CWPRA adjustment for outlying years (see Table 12)
- Operating Costs include Assistance to Levee Authorities (\$1 million) and Project Support (\$5 million)

TOTAL EXPENDITURES

\$1.15 BILLION

FIGURE 3: PROJECTED FY 2023 EXPENDITURES BY PROJECT PHASE



NOTES

- Construction includes Beneficial Use (\$2 million)
- Engineering and Design and Construction include CWPRA adjustment for outlying years (see Table 12)
- Operating Costs include Assistance to Levee Authorities (\$1 million) and Project Support (\$5 million)

TOTAL EXPENDITURES

\$1.11 BILLION

TABLE 14: PROJECTED PROGRAMMATIC THREE-YEAR EXPENDITURES (FY 2021 - FY 2023)

ID	Project Name	FY 2021	FY 2022	FY 2023	Program Total (FY 2021 - 2023)
ONGOING PROGRAM EXPENDITURES					
N/A	Beneficial Use Program	\$2,000,000	\$2,000,000	\$2,000,000	\$6,000,000
LA-0251	Barrier Island Maintenance Program ¹	\$2,529,424	TBD	TBD	\$2,529,424
N/A	Vegetative Plantings	\$400,000	\$400,000	\$400,000	\$1,200,000
PO-0162	Assistance to Levee Authorities	\$1,000,000	\$1,000,000	\$1,000,000	\$3,000,000
LA-0028	Restoration Partnerships ¹	\$1,000,000	\$1,000,000	\$1,000,000	\$3,000,000
N/A	Project Support	\$5,000,000	\$5,000,000	\$5,000,000	\$15,000,000
Total Ongoing Programs Expenditures		\$11,929,424	\$9,400,000	\$9,400,000	\$30,729,424
ADAPTIVE MANAGEMENT EXPENDITURES					
FUTURE PROJECT DEVELOPMENT					
LA-0255	Project Development and Implementation Program	\$400,000	\$400,000	\$400,000	\$1,200,000
LA-0261	Non-structural Program Development ¹	\$5,530,000	\$3,000,000	\$3,000,000	\$11,530,000
FOCUSED APPLIED RESEARCH					
LA-0158	Coastal Science Assistantship Program ²	\$335,000	\$350,000	\$350,000	\$1,035,000
SCIENCE AND TECHNICAL ADVISORY BOARDS					
LA-0260	Master Plan Advisory Committees ²	\$150,000	\$150,000	\$75,000	\$375,000
MODEL DEVELOPMENT AND REFINEMENT					
LA-0250	Master Plan Predictive Models ²	\$4,000,000	\$4,000,000	\$2,000,000	\$10,000,000
MR-0016-SSPM	Small Scale Physical Model ³	\$500,000	\$500,000	\$500,000	\$1,500,000
SYSTEM WIDE ASSESSMENT AND MONITORING PROGRAM (SWAMP)					
N/A	Fisheries ⁵	\$2,338,500	\$2,330,000	\$2,330,000	\$6,998,500
N/A	SWAMP Implementation ^{3,4,5}	\$13,950,000	\$10,500,000	\$8,280,000	\$32,730,000
LA-0226	Barrier Island Comprehensive Monitoring ⁵	\$3,676,625	\$2,540,625	\$1,164,625	\$7,381,875
LA-0030	CRMS-Wetlands	\$1,050,000	\$3,650,000	\$2,550,000	\$7,250,000
N/A	Regional Geology and Sediment Management ⁴	\$830,000	\$830,000	\$830,000	\$2,490,000
DATA MANAGEMENT AND ANALYSIS					
LA-0258	Data Management ⁴	\$2,750,000	\$2,750,000	\$3,000,000	\$8,500,000
LA-0254	Monitoring Data Interpretations ^{3,4,5}	\$1,050,000	\$1,050,000	\$750,000	\$2,850,000
COMMUNICATION AND MESSAGING					
N/A	Workshop and Conference Development	\$150,000	\$175,000	\$175,000	\$500,000
N/A	Language Access	\$25,000	\$25,000	\$25,000	\$75,000
LA-0249	Coastal Education	\$600,000	\$600,000	\$600,000	\$1,800,000
OTHER ADAPTIVE MANAGEMENT EXPENDITURES					
N/A	Oyster Industry Sustainability Initiative ²	\$10,000,000	\$0	\$0	\$10,000,000
Total Adaptive Management Expenditures		\$47,335,125	\$32,850,625	\$26,029,625	\$106,215,375
TOTAL Programmatic Expenditures		\$59,264,549	\$42,250,625	\$35,429,625	\$136,944,799
Programmatic Surplus Expenditures (See Table 20)		\$4,383,282	\$0	\$0	\$4,383,282
Programmatic NRDA Expenditures (See Table 28)		\$11,215,125	\$8,846,431	\$6,682,690	\$26,744,246
Programmatic NFWF Expenditures (See Table 28)		\$6,350,000	\$4,989,785	\$4,114,516	\$15,454,301
Programmatic RESTORE Expenditures (See Table 28)		\$7,530,000	\$6,664,409	\$6,357,419	\$20,551,828
Programmatic GOMESA Expenditures		\$14,485,000	\$4,500,000	\$2,425,000	\$21,410,000
Programmatic Operations Expenditures		\$15,301,142	\$17,250,000	\$15,850,000	\$48,401,142
^{1.} FY 2021 expenditures funded at least partially with Surplus funds (supplemental funding from the Trust Fund may also be utilized). ^{2.} FY 2021 expenditures funded by GOMESA funds. ^{3.} FY 2021 expenditures funded by NFWF Adaptive Management funds. ^{4.} FY 2021 expenditures funded by RESTORE Adaptive Management funds. ^{5.} FY 2021 expenditures funded by NRDA Adaptive Management funds.					

TABLE 15: PROJECTED STATE PROTECTION AND RESTORATION THREE-YEAR
OPERATING EXPENDITURES (FY 2021 - FY 2023)

Program	FY 2021	FY 2022	FY 2023	Program Total (FY 2021 - 2023)
CPRA	\$19,656,500	\$20,442,760	\$21,260,470	\$61,359,730
OCM	\$2,827,134	\$2,827,134	\$2,827,134	\$8,481,402
Office of the Governor - Coastal Activities	\$1,536,185	\$1,536,185	\$1,536,185	\$4,608,555
Office of the Attorney General	\$185,000	\$185,000	\$185,000	\$555,000
Total Operating Costs	\$24,204,819	\$24,991,079	\$25,808,789	\$75,004,687

TABLE 16: COASTAL WETLANDS PLANNING, PROTECTION AND RESTORATION ACT (CWPPRA) PROJECTED EXPENDITURES

ID	Project Name	FY 2021	FY 2022	FY 2023	Program Total (FY 2021 - 2023)
ENGINEERING AND DESIGN (P1)					
BA-0194	East Leeville Marsh Creation and Nourishment ¹	\$229,320	\$0	\$0	\$229,320
BA-0195	Barataria Bay Rim Marsh Creation and Nourishment	\$5,920	\$0	\$0	\$5,920
BA-0206	Northeast Turtle Bay Marsh Creation & Critical Area Shoreline Protection	\$29,600	\$29,600	\$0	\$59,200
BA-0217	Grand Bayou Ridge and Marsh Creation ¹	\$311,840	\$11,840	\$0	\$323,680
BS-0024	Terracing and Marsh Creation South of Big Mar ¹	\$23,680	\$0	\$0	\$23,680
BS-0032	Mid Breton Land Bridge Marsh Creation & Terracing	\$150,200	\$0	\$0	\$150,200
BS-0037	East Delacroix Marsh Creation and Terracing ¹	\$765,128	\$765,128	\$0	\$1,530,256
BS-0038	Breton Landbridge Marsh Creation (West) ¹	\$680,472	\$612,425	\$68,047	\$1,360,944
BS-0041	North Delacroix Marsh Creation and Terracing ¹	\$580,264	\$580,264	\$291,236	\$1,451,764
BS-0042	Phoenix Marsh Creation - East Increment ¹	\$696,574	\$1,888,824	\$770,124	\$3,355,522
CS-0078	No Name Bayou Marsh Creation and Nourishment ¹	\$217,760	\$0	\$0	\$217,760
CS-0079	Oyster Lake Marsh Creation and Nourishment ¹	\$23,680	\$0	\$0	\$23,680
CS-0081	Sabine Refuge Marsh Creation Cycles 6 & 7	\$190,000	\$70,000	\$0	\$260,000
CS-0085	Long Point Bayou Marsh Creation ¹	\$609,322	\$680,913	\$0	\$1,290,235
ME-0031	Freshwater Bayou Marsh Creation	\$4,736	\$4,736	\$0	\$9,472
ME-0032	South Grand Chenier Marsh Creation - Baker Tract	\$2,368	\$1,184	\$1,184	\$4,736
PO-0133	LaBranche Central Marsh Creation	\$11,840	\$0	\$0	\$11,840
PO-0173	Fritchie Marsh Creation and Terracing	\$55,247	\$55,247	\$0	\$110,493
PO-0178	Bayou LaLoutre Ridge Restoration and Marsh Creation ¹	\$45,000	\$0	\$0	\$45,000
PO-0179	St. Catherine Island Marsh Creation and Shoreline Protection ¹	\$38,580	\$0	\$0	\$38,580
PO-0181	Bayou Cane Marsh Creation	\$845,000	\$435,000	\$0	\$1,280,000
TE-0112	North Catfish Lake Marsh Creation	\$45,000	\$0	\$0	\$45,000
TE-0117	Island Road Marsh Creation and Nourishment ¹	\$14,600	\$0	\$0	\$14,600
TE-0156	Bay Raccourci Marsh Creation & Ridge Restoration ¹	\$1,444,244	\$1,000,000	\$1,000,000	\$3,444,244
TE-0157	East Catfish Lake Marsh Creation and Shoreline Protection ¹	\$1,181,687	\$1,823,174	\$337,625	\$3,342,486
CONSTRUCTION (P2)					
BA-0125	Northwest Turtle Bay Marsh Creation ¹	\$10,120,000	\$0	\$0	\$10,120,000
BA-0171	Caminada Headlands Back Barrier Marsh Creation ¹	\$14,886,196	\$2,122,844	\$0	\$17,009,040
CS-0049	Cameron-Creole Freshwater Introduction	\$452,439	\$0	\$0	\$452,439
CS-0066	Cameron Meadows Marsh Creation and Terracing ¹	\$19,629,171	\$6,543,057	\$0	\$26,172,228
PO-0075	LaBranche East Marsh Creation	\$1,214,473	\$2,428,945	\$1,214,473	\$4,857,891
PO-0169	New Orleans Landbridge Shoreline Stabilization and Marsh Creation ¹	\$14,750,000	\$3,750,000	\$0	\$18,500,000
ME-0020	South Grand Chenier Marsh Creation Project	\$729,537	\$1,094,306	\$0	\$1,823,843
TE-0134	West Fourchon Marsh Creation ¹	\$2,300,000	\$21,720,000	\$2,000,000	\$26,020,000
TE-0138	Bayou DeCade Ridge and Marsh Creation ¹	\$15,234,126	\$3,808,532	\$0	\$19,042,658
Subtotal		\$87,518,004	\$49,426,018	\$5,682,689	\$142,626,711
Adjustment for Outlying Years²		N/A	\$30,573,982	\$74,317,311	\$104,891,293
Total Expenditures		\$87,518,004	\$80,000,000	\$80,000,000	\$247,518,004
Federal Expenditures (see Note 1)		\$72,285,228	\$64,953,245	\$66,966,692	\$204,205,165
Trust Fund Expenditures		\$15,232,776	\$15,046,755	\$13,033,308	\$43,312,840
¹ Project is being led by CPRA; projected expenditures include Federal funds; any State expenditures beyond its 15% cost share will be reimbursed by the Federal partner. ² Because CWPPRA projects compete for funding annually, CWPPRA expenditures as presented in Table 16 (which include projected expenditures for approved projects only) do not adequately capture likely CWPPRA expenditures in outlying years. The State's estimated CWPPRA expenditures for FY 2022 - FY 2023 are therefore based on prior years' expenditures.					

TABLE 17: LOUISIANA WRDA PROJECTED EXPENDITURES

ID	Project Name	FY 2021	FY 2022	FY 2023	Program Total (FY 2021 - 2023)
BA-0210	Grand Isle & Vicinity Breakwaters ¹	\$3,267,670	\$8,880	\$0	\$3,276,550
LA-0020	Southwest Coastal Louisiana ²	\$300,000	\$300,000	\$122,355	\$722,355
Total Expenditures		\$3,567,670	\$308,880	\$122,355	\$3,998,905
GOMESA Expenditures for WRDA (see Table 29)		(\$3,267,670)	(\$8,880)	\$0	(\$3,276,550)
Surplus Expenditures for WRDA (see Table 20)		(\$300,000)	(\$300,000)	(\$122,355)	(\$722,355)
Trust Fund Expenditures for WRDA		\$0	\$0	\$0	\$0
1. Project expenditures are funded through GOMESA revenues (see Table 29). 2. Project expenditures are funded through Surplus revenues (see Table 20); expenditures in future fiscal years will be covered with accrued credit or Trust Fund dollars.					

TABLE 18: COMMUNITY DEVELOPMENT BLOCK GRANT (CDBG) PROJECTED EXPENDITURES

ID	Project Name	FY 2021	FY 2022	FY 2023	Program Total (FY 2021 - 2023)
LA-0290	Statewide Floodplain Management (Watershed Initiative)	\$2,000,000	\$2,000,000	\$2,000,000	\$6,000,000
N/A	CDBG Program Administration	\$11,680	\$0	\$0	\$11,680
Total Expenditures		\$2,011,680	\$2,000,000	\$2,000,000	\$6,011,680

TABLE 19: STATE-ONLY PROJECT EXPENDITURES (NON-SURPLUS)

ID	Project Name	FY 2021	FY 2022	FY 2023	Program Total (FY 2021 - 2023)
MOEX PROJECTS					
PO-0142	Hydrologic Restoration of the Amite River Diversion Canal ¹	\$627,580	\$96,640	\$58,680	\$782,900
CAPITAL OUTLAY PROJECTS					
BA-0075-2	Rosethorne Tidal Protection ²	\$5,000,000	\$3,547,000	\$0	\$8,547,000
TE-0064	Morganza to the Gulf ^{2,3}	\$2,000,000	\$0	\$0	\$2,000,000
TE-0142	Flat Lake Study ⁴	\$300,000	\$0	\$0	\$300,000
AT-0022	East Grand Lake Upper Region ⁴	\$2,153,472	\$1,435,648	\$0	\$3,589,120
AT-0023	Henderson Lake Water Management Unit Spoil Bank Gapping ⁴	\$500,000	\$0	\$0	\$500,000
N/A	Murphy Lake Depth Restoration ⁴	\$300,000	\$0	\$0	\$300,000
N/A	Buffalo Cove Water Management ⁴	\$300,000	\$0	\$0	\$300,000
PROJECTS WITH TRUST FUND EXPENDITURES					
BA-0066	West Bank and Vicinity ²	\$56,240	\$0	\$0	\$56,240
BA-0109	HSDRRS Mitigation - WBV ⁵	\$12,000	\$0	\$0	\$12,000
BA-0158	New Orleans to Venice Mitigation - Plaquemines Non-Fed ⁵	\$11,680	\$11,680	\$11,680	\$35,040
BA-0159	New Orleans to Venice Mitigation - Fed ⁵	\$11,680	\$11,680	\$11,680	\$35,040
BA-0211	Upper Barataria Basin Flood Management ⁵	\$30,368	\$30,368	\$0	\$60,736
BA-0212	WBV Risk Reduction ⁵	\$30,368	\$30,368	\$0	\$60,736
PO-0057	SELA - Overall ⁵	\$7,400	\$7,400	\$7,400	\$22,200
PO-0121	HSDRRS Mitigation - LPV ⁵	\$45,000	\$0	\$0	\$45,000
PO-0182	LPV Risk Reduction ⁵	\$30,368	\$30,368	\$0	\$60,736
PO-0186	St. Tammany Risk Reduction ⁵	\$30,368	\$30,368	\$30,368	\$91,104
TV-0054	South Central Coastal Plan ⁵	\$30,368	\$30,368	\$0	\$60,736
N/A	USACE Bayou Courtableau and Bayou Des Glaisses ⁵	\$30,368	\$30,368	\$30,368	\$91,104
TRUST FUND EXPENDITURES FOR SURPLUS PROJECTS⁵					
BA-0075-1	Jean Lafitte Tidal Protection	\$11,840	\$0	\$0	\$11,840
BA-0075-2	Rosethorne Tidal Protection	\$36,408	\$36,408	\$0	\$72,816
LA-0020	Southwest Coastal Louisiana	\$30,368	\$30,368	\$30,368	\$91,104
PO-0062	West Shore Lake Pontchartrain	\$23,680	\$23,680	\$23,680	\$71,040
PO-0167	St. Tammany Parish Coastal Protection Study	\$118,400	\$96,200	\$60,400	\$275,000
TE-0064	Morganza to the Gulf	\$59,200	\$30,368	\$0	\$89,568
TV-0077	North Vermilion Bay Shoreline Protection	\$2,960	\$2,960	\$2,368	\$8,288
TV-0082	Freshwater Bayou Shoreline Protection	\$2,960	\$2,960	\$2,960	\$8,880
BS-0040	Bayou Terre aux Boeufs Ridge Restoration and Armoring Phase 1	\$2,368	\$0	\$0	\$2,368
ME-0037	Rockefeller Refuge Shoreline Protection	\$2,368	\$0	\$0	\$2,368
Total State Expenditures		\$11,797,812	\$5,515,200	\$269,952	\$17,582,964
<ol style="list-style-type: none"> 1. Projected expenditures are for post-construction activities including site assessment, nutria control, and vegetative plantings. 2. Project receiving supplemental funding from Surplus funds (see Table 20). 3. Expenditures do not include the \$12.5 million in Priority 5 Capital Outlay Funding that TLCD has requested to be moved to Priority 1. Proposed transfer of this funding to Priority 1, which has been recommended by Governor Edwards and noted by the State Bond Commission, is subject to legislative approval in House Bill 2 (HB2) during the 2020 session. The funding would be available for TLCD to expend on TE-0064 upon approval of HB2. 4. Project to be implemented under the Atchafalaya Basin program. 5. Project is currently 100% Federal. Projected expenditures are for staff coordination with Federal project team members. 6. Represents staff salaries for projects funded for implementation with Surplus dollars. 					

TABLE 20: SURPLUS PROJECTED EXPENDITURES

ID	Project Name	FY 2021	FY 2022	FY 2023	Program Total (FY 2021 - 2023)
2007, 2008, 2009 SURPLUS - PROJECT EXPENDITURES					
BA-0045	Caminada Headland Beach and Dune Restoration ¹	\$117,620	\$96,312	\$86,840	\$300,772
BA-0071	Medium Diversion with Dedicated Dredging at Myrtle Grove ²	\$2,811,261	\$0	\$0	\$2,811,261
BA-0075-1	Jean Lafitte Tidal Protection	\$600,000	\$0	\$0	\$600,000
BA-0233	Grand Isle Bayside Segmented Rock Breakwater Project and Habitat Enhancements ³	\$500,000	\$0	\$0	\$500,000
LA-0020	Southwest Coastal Louisiana	\$300,000	\$300,000	\$122,355	\$722,355
PO-0001	Violet Canal Repairs ³	\$1,000,000	\$0	\$0	\$1,000,000
PO-0062	West Shore Lake Pontchartrain	\$5,000,000	\$0	\$0	\$5,000,000
PO-0063	Lake Pontchartrain and Vicinity	\$11,149,845	\$281,140	\$306,511	\$11,737,496
PO-0167	St. Tammany Parish Coastal Protection Study	\$600,000	\$500,000	\$400,000	\$1,500,000
PO-0185	St. Bernard Pump Station Repairs ³	\$4,000,000	\$0	\$0	\$4,000,000
TE-0064	Morganza to the Gulf	\$3,076,032	\$0	\$0	\$3,076,032
TE-0153	LaCache Pump Station ³	\$1,600,000	\$0	\$0	\$1,600,000
TE-0154	Larose to Golden Meadow System Improvements ⁴	\$2,700,000	\$0	\$0	\$2,700,000
TV-0077	North Vermilion Bay Shoreline Protection	\$251,700	\$5,454,904	\$1,865,096	\$7,571,700
TV-0082	Freshwater Bayou Shoreline Protection	\$297,960	\$1,273,345	\$2,014,235	\$3,585,540
N/A	Lafitte Area Independent Levee District Tidal Protection ^{3,5}	\$0	\$5,500,000	\$5,500,000	\$11,000,000
N/A	Southeast Louisiana Flood Protection/ LERRDS ⁶	\$38,030,095	\$739,080	\$791,914	\$39,561,089
2007, 2008, 2009 SURPLUS - PROGRAMMATIC EXPENDITURES					
LA-0026	Rehabilitation and Repair of State Restoration Projects	\$1,098,239	\$0	\$0	\$1,098,239
LA-0027	Barrier Island Maintenance Program	\$2,529,424	\$0	\$0	\$2,529,424
N/A	Coastal Wetland Planning, Protection and Restoration Act (CWPPRA) ⁷	\$451,189	\$0	\$0	\$451,189
N/A	Emergency Reserve	\$116,920	\$0	\$0	\$116,920
N/A	Non-Structural Program Development ⁸	\$853,858	\$0	\$0	\$853,858
2018 SURPLUS EXPENDITURES					
BA-0197	West Grand Terre - LDWF Camp Removal	\$1,000,000	\$0	\$0	\$1,000,000
LA-0028	Restoration Partnerships	\$1,000,000	\$0	\$0	\$1,000,000
BS-0040	Bayou Terre aux Boeufs Ridge Restoration and Armoring Phase 1	\$500,000	\$0	\$0	\$500,000
ME-0037	Rockefeller Refuge Shoreline Protection	\$5,000,000	\$0	\$0	\$5,000,000
PO-0062	West Shore Lake Pontchartrain	\$6,000,000	\$24,000,000	\$0	\$30,000,000
2019 SURPLUS EXPENDITURES					
CS-0086	Cameron Parish Gulf Shoreline Protection	\$2,000,000	\$0	\$0	\$2,000,000
LA-0309	Non-structural Risk Reduction (Coastwide)	\$1,970,000	\$0	\$0	\$1,970,000
PO-0062	West Shore Lake Pontchartrain	\$60,000,000	\$0	\$0	\$60,000,000
PO-0187	Jefferson Parish Lakefront Project	\$1,750,000	\$0	\$0	\$1,750,000
PO-0188	Chandeleur Island Restoration	\$3,000,000	\$0	\$0	\$3,000,000
TE-0064	Morganza to the Gulf	\$6,000,000	\$0	\$0	\$6,000,000
TE-0160	South Lafourche Levee Improvements	\$4,000,000	\$0	\$0	\$4,000,000
TE-0161	North Lafourche Levee Improvements	\$3,000,000	\$0	\$0	\$3,000,000
TV-0077	North Vermilion Bay Shoreline Protection	\$1,000,000	\$0	\$0	\$1,000,000
N/A	Mid Basin Diversion Land Acquisition (Plaquemines)	\$17,000,000	\$0	\$0	\$17,000,000
N/A	Emergency Fund	\$5,000,000	\$0	\$0	\$5,000,000
N/A	Atchafalaya Basin Program	\$1,500,000	\$0	\$0	\$1,500,000

TABLE 20: SURPLUS PROJECTED EXPENDITURES (CONTINUED)

ID	Project Name	FY 2021	FY 2022	FY 2023	Program Total (FY 2021 - 2023)
N/A	Nicholls State University - Center for River Studies	\$5,000,000	\$0	\$0	\$5,000,000
N/A	IAT to Facility Planning	\$5,000,000	\$0	\$0	\$5,000,000
N/A	LSU Center for River Studies	\$250,000	\$0	\$0	\$250,000
N/A	Restoration Partnerships (Coastwide)	\$1,000,000	\$0	\$0	\$1,000,000
Total Expenditures		\$208,054,143	\$38,144,781	\$11,086,951	\$257,285,875
<ol style="list-style-type: none"> 1. Surplus funds include post-construction monitoring expenditures (see Table 23). 2. Includes funding for Mid-Barataria Sediment Diversion (BA-0153). 3. Project to be implemented with unexpended funds from previously completed Surplus projects. 4. Expenditures will be used to fund additional improvements within the Larose to Golden Meadow alignment. 5. Funding anticipated to be used for the implementation of Goose Bayou (Penn Levee) (BA-0223). 6. Includes funds that may be used for West Bank and Vicinity (BA-0066), HSDRRS Mitigation- West Bank and Vicinity (BA-0109), HSDRRS Mitigation- Lake Pontchartrain and Vicinity (PO-0121), SELA (PO-0057), Permanent Closure of Canals and Pump Stations (PO-0060), LPV Task Force Guardian Mitigation- Bayou Sauvage (PO-0145), Previously Authorized Mitigation LPV- Manchac (PO-0146), Previously Authorized Mitigation- WBV (BA-0154), New Orleans to Venice (BA-0067), New Orleans to Venice Mitigation- Plaquemines Non-Fed (BA-0158), New Orleans to Venice Mitigation- Fed (BA-0159), and/or Plaquemines TFO Mitigation- Braithwaite to Scarsdale (BA-0156). 7. Expenditures will be used to supplement funding for CWPPRA projects (see Table 24). 8. Funds will be used to develop a coordinated strategy for implementing nonstructural projects identified in the Master Plan coastal communities. This may also include development of pilot projects in coastal parishes with high levels of risk and vulnerability. 					

TABLE 21: CWPPRA MONITORING PROJECTED EXPENDITURES

ID	Project Name	FY 2021	FY 2022	FY 2023	Program Total (FY 2021 - 2023)
BA-0003-C	Naomi Outfall Management	\$20,932	\$14,670	\$7,460	\$43,062
BA-0020	Jonathan Davis Wetland Protection	\$13,320	\$4,440	\$4,440	\$22,200
BA-0027-C	Barataria Landbridge Shoreline Protection (Phase 3)	\$13,320	\$4,440	\$9,176	\$26,936
BA-0034-2	Hydrologic Restoration and Vegetative Planting in the Des Allemands Swamp	\$86,280	\$63,320	\$63,320	\$212,920
BA-0035	Chaland Pass to Grand Bayou	\$4,440	\$13,320	\$13,320	\$31,080
BA-0036	Dedicated Dredging on the Barataria Basin Landbridge	\$4,440	\$4,440	\$13,320	\$22,200
BA-0037	Little Lake Shoreline Protection/Dedicated Dredging Near Round Lake	\$5,920	\$11,840	\$5,920	\$23,680
BA-0038	Barataria Barrier Island Complex Project: Pelican Island and Pass La Mer to Chaland Pass Restoration	\$4,440	\$4,440	\$13,320	\$22,200
BA-0039	Mississippi River Sediment Delivery (Bayou Dupont)	\$91,920	\$23,204	\$14,800	\$129,924
BA-0042	Lake Hermitage Marsh Creation	\$12,432	\$6,512	\$2,960	\$21,904
BA-0048	Bayou Dupont Marsh and Ridge Creation	\$29,918	\$2,960	\$2,960	\$35,838
BA-0068	Grand Liard Marsh and Ridge Restoration	\$30,300	\$4,440	\$29,400	\$64,140
BA-0125	Northwest Turtle Bay Marsh Creation	\$16,576	\$5,920	\$28,416	\$50,912
BA-0164	Bayou Dupont Sediment Delivery Marsh Creation #3	\$10,656	\$25,239	\$2,960	\$38,855
BA-0171	Caminada Headlands Back Barrier Marsh Creation	\$0	\$79,600	\$5,920	\$85,520
BS-0003-A	Caernarvon Diversion Outfall Management	\$14,208	\$2,960	\$0	\$17,168
BS-0011	Delta Management at Fort St. Philip	\$4,440	\$101,880	\$13,320	\$119,640
BS-0016	South Lake Lery Shoreline and Marsh Restoration	\$22,633	\$8,880	\$2,960	\$34,473
CS-0004-A	Cameron-Creole Maintenance	\$75,776	\$61,568	\$61,568	\$198,912
CS-0011-B	Sweet Lake/Willow Lake Hydrologic Restoration	\$19,536	\$19,536	\$0	\$39,072
CS-0021	Highway 384 Hydrologic Restoration	\$2,960	\$0	\$0	\$2,960
CS-0023	Replace Sabine Refuge Water Control Structures at Headquarters Canal, West Cove Canal, and Hog Island Gully	\$19,536	\$2,960	\$2,960	\$25,456
CS-0027	Black Bayou Hydrologic Restoration	\$4,144	\$17,168	\$17,168	\$38,480
CS-0028-3	Sabine Refuge Marsh Creation, Increment 3	\$17,168	\$17,168	\$2,960	\$37,296
CS-0028-4	Sabine Refuge Marsh Creation, Increment 4	\$17,168	\$17,168	\$2,960	\$37,296

TABLE 21: CWPRA MONITORING PROJECTED EXPENDITURES (CONTINUED)

ID	Project Name	FY 2021	FY 2022	FY 2023	Program Total (FY 2021 - 2023)
CS-0029	Black Bayou Culverts Hydrologic Restoration	\$17,168	\$2,960	\$17,168	\$37,296
CS-0030	GIWW - Perry Ridge West Bank Stabilization	\$20,424	\$17,168	\$2,960	\$40,552
CS-0031	Holly Beach Sand Management	\$2,960	\$2,960	\$2,960	\$8,880
CS-0032	East Sabine Lake Hydrologic Restoration	\$12,432	\$12,432	\$2,960	\$27,824
CS-0054	Cameron-Creole Watershed Grand Bayou Marsh Creation	\$2,960	\$2,960	\$15,984	\$21,904
CS-0059	Oyster Bayou Marsh Creation & Terracing	\$37,443	\$37,443	\$37,443	\$112,330
CS-0066	Cameron Meadows Marsh Creation and Terracing	\$0	\$2,960	\$2,960	\$5,920
CS-0078	No Name Bayou Marsh Creation	\$0	\$2,960	\$2,960	\$5,920
LA-0003-B	Coastwide Nutria Control Plan	\$150,000	\$151,349	\$155,890	\$457,239
LA-0039	Coastwide Plantings Program	\$136,068	\$112,388	\$98,180	\$346,636
LA-0284	Coastwide Salvinia Weevil Propagation Facility	\$42,670	\$42,670	\$42,670	\$128,010
ME-0004	Freshwater Bayou Wetland (Phases 1 & 2)	\$17,168	\$17,168	\$2,960	\$37,296
ME-0011	Humble Canal Hydrologic Restoration	\$17,091	\$14,960	\$14,960	\$47,011
ME-0013	Freshwater Bayou Bank Stabilization	\$9,676	\$9,676	\$2,960	\$22,312
ME-0014	Pecan Island Terracing	\$23,088	\$17,168	\$2,960	\$43,216
ME-0016	Freshwater Introduction South of Highway 82	\$29,299	\$15,091	\$17,091	\$61,482
ME-0018	Rockefeller Refuge Gulf Shoreline Stabilization	\$76,840	\$76,840	\$95,784	\$249,464
ME-0019	Grand-White Lakes Landbridge Protection	\$9,380	\$24,272	\$17,168	\$50,820
ME-0020	South Grand Chenier Hydrologic Restoration Project	\$2,960	\$2,960	\$2,960	\$8,880
ME-0022	South White Lake Shoreline Protection	\$33,744	\$21,904	\$2,960	\$58,608
MR-0003	West Bay Sediment Diversion	\$224,977	\$14,800	\$10,064	\$249,841
MR-0009	Delta-Wide Crevasses	\$4,736	\$4,736	\$4,736	\$14,208
PO-0006	Fritchie Marsh Restoration	\$4,440	\$2,960	\$4,440	\$11,840
PO-0018	Bayou Sauvage National Wildlife Refuge Hydrologic Restoration, Phase 2	\$1,184	\$1,184	\$1,184	\$3,552
PO-0022	Bayou Chevee Shoreline Protection	\$10,656	\$5,920	\$0	\$16,576
PO-0024	Hopedale Hydrologic Restoration	\$2,960	\$2,960	\$0	\$5,920
PO-0033	Goose Point/Point Platte Marsh Creation	\$8,880	\$2,960	\$2,960	\$14,800
PO-0104	Bayou Bonfouca Marsh Creation	\$2,960	\$77,878	\$2,960	\$83,798
PO-0169	New Orleans Landbridge Shoreline Stabilization and Marsh Creation	\$4,440	\$87,920	\$4,440	\$96,800
TE-0034	Penchant Basin Natural Resources Plan, Increment 1	\$29,600	\$11,840	\$11,840	\$53,280
TE-0037	New Cut Dune/Marsh Restoration	\$11,840	\$5,920	\$11,840	\$29,600
TE-0040	Timbalier Island Dune/Marsh Restoration	\$29,600	\$5,920	\$0	\$35,520
TE-0044	North Lake Mechant Landbridge Restoration	\$5,920	\$5,920	\$28,416	\$40,256
TE-0046	West Lake Boudreaux Shoreline Protection and Marsh Creation	\$23,680	\$8,880	\$4,144	\$36,704
TE-0048	Raccoon Island Shoreline Protection/Marsh Creation	\$8,880	\$65,920	\$85,920	\$160,720
TE-0050	Whiskey Island Back Barrier Marsh Creation	\$63,680	\$4,736	\$21,312	\$89,728
TE-0052	West Belle Pass Barrier Headland Restoration	\$22,760	\$5,920	\$5,920	\$34,600
TE-0072	Lost Lake Marsh Creation and Hydrologic Restoration	\$11,840	\$11,840	\$61,840	\$85,520
TE-0138	Bayou DeCade Ridge and Marsh Creation	\$14,800	\$14,800	\$14,800	\$44,400
TV-0013-A	Oaks/Avery Canal Hydrologic Restoration, Increment 1	\$17,168	\$2,960	\$2,960	\$23,088
TV-0014	Marsh Island Hydrologic Restoration	\$17,168	\$2,960	\$0	\$20,128
TV-0015	Sediment Trapping at "The Jaws"	\$25,456	\$19,536	\$19,536	\$64,528
TV-0017	Lake Portage Land Bridge	\$2,960	\$2,960	\$2,960	\$8,880

TABLE 21: CWPRA MONITORING PROJECTED EXPENDITURES (CONTINUED)

ID	Project Name	FY 2021	FY 2022	FY 2023	Program Total (FY 2021 - 2023)
TV-0018	Four Mile Canal Terracing and Sediment Trapping	\$8,880	\$11,840	\$19,536	\$40,256
TV-0021	East Marsh Island Marsh Creation	\$38,943	\$43,679	\$40,719	\$123,342
TV-0063	Coles Bayou Marsh Restoration	\$15,024	\$29,232	\$29,232	\$73,488
CRMS	Coastwide Reference Monitoring System	\$8,624,681	\$10,941,176	\$9,066,152	\$28,632,009
Total Expenditures		\$10,421,948	\$12,503,720	\$10,321,438	\$33,247,105
Federal CWPRA Monitoring Expenditures		\$8,858,656	\$10,628,162	\$8,773,222	\$28,260,039
Trust Fund CWPRA Monitoring Expenditures		\$1,563,292	\$1,875,558	\$1,548,216	\$4,987,066

TABLE 22: PROJECTED EXPENDITURES FOR MONITORING OF WRDA PROJECTS

ID	Project Name	FY 2021	FY 2022	FY 2023	Program Total (FY 2021 - 2023)
BA-0001	Davis Pond Freshwater Diversion	\$642,464	\$658,526	\$674,988	\$1,975,978
BS-0008	Caernarvon Freshwater Diversion	\$475,003	\$486,878	\$499,050	\$1,460,931
Total Expenditures¹		\$1,117,467	\$1,145,404	\$1,174,038	\$3,436,909
1. Monitoring expenditures of WRDA projects are subject to a 75% federal/25% state cost share. At present, CPRA is funding its 25% cost share of monitoring costs with GOMESA funds, and will seek reimbursement from the USACE for the 75% federal match.					

TABLE 23: PROJECTED EXPENDITURES FOR MONITORING OF OTHER PROJECTS

ID	Project Name	FY 2021	FY 2022	FY 2023	Program Total (FY 2021 - 2023)
BERM TO BARRIER PROJECTS¹					
BA-0040	Riverine Sand Mining/Scofield Island Restoration	\$84,286	\$5,920	\$104,126	\$194,332
BA-0110	Shell Island East	\$10,360	\$10,360	\$4,440	\$25,160
NFWF PROJECTS					
BA-0143	Caminada Headland Beach and Dune Restoration Increment 2	\$335,520	\$351,312	\$351,312	\$1,038,144
TE-0143	Terrebonne Basin Barrier Island	\$193,680	\$481,253	\$310,925	\$985,858
NRDA PROJECTS					
BA-0111	Shell Island West	\$225,000	\$95,000	\$60,000	\$380,000
BA-0141	NRDA Lake Hermitage Marsh Creation Increment 2	\$164,000	\$59,200	\$0	\$223,200
BA-0142	NRDA Cheniere Ronquille	\$215,000	\$75,000	\$40,000	\$330,000
BA-0197	West Grand Terre Beach Nourishment and Stabilization	\$0	\$0	\$100,000	\$100,000
BA-0202	Queen Bess Island Restoration	\$275,000	\$115,000	\$115,000	\$505,000
BA-0203	Barataria Basin Ridge and Marsh Creation - Spanish Pass Increment	\$0	\$0	\$100,000	\$100,000
BA-0240	Bayou Grande Chenier Marsh and Ridge Restoration	\$0	\$0	\$90,046	\$90,046
CS-0080	Rabbitt Island Restoration	\$1,140,000	\$325,000	\$325,000	\$1,790,000
TE-0100	NRDA Caillou Lake Headlands	\$360,000	\$265,000	\$180,000	\$805,000
SURPLUS PROJECTS²					
BA-0045	Caminada Headland Restoration	\$117,620	\$96,312	\$86,840	\$300,772
USACE MITIGATION PROJECTS					
BA-0109	HSDRRS Mitigation - WBV	\$14,800	\$14,800	\$17,760	\$47,360
BA-0154	Previously Authorized Mitigation - WBV	\$11,840	\$11,840	\$14,800	\$38,480
BA-0158	New Orleans to Venice Mitigation - Plaquemines Non-Federal	\$7,400	\$7,400	\$7,400	\$22,200
BA-0159	New Orleans to Venice Mitigation - Federal	\$7,400	\$7,400	\$7,400	\$22,200
PO-0038-SF	MRGO Closure Structure	\$0	\$0	\$0	\$0
PO-0093	MRGO - Lake Borgne - Bayou Dupre Segment	\$0	\$0	\$0	\$0
PO-0094	MRGO - Lake Borgne - Bayou Bienvenue Segment	\$0	\$0	\$0	\$0
PO-0095	MRGO - Lake Borgne - Shell Beach Segment	\$0	\$0	\$0	\$0
PO-0121	HSDRRS Mitigation - LPV	\$7,400	\$7,400	\$7,400	\$22,200
PO-0145	LPV Task Force Guardian Mitigation - Bayou Sauvage	\$37,760	\$7,400	\$7,400	\$52,560
PO-0146	LPV Mitigation Project, Manchac WMA Marsh Creation	\$7,400	\$7,400	\$7,400	\$22,200
LOSCO PROJECTS					
BA-0196	LOSCO- EML	\$44,864	\$36,840	\$36,840	\$118,544
LA-0278	General Oil Spill - LOSCO	\$31,840	\$31,840	\$31,840	\$95,520
LA-0283	Multiple Oil Spill - LOSCO	\$44,864	\$44,864	\$44,864	\$134,592
STATE-ONLY PROJECTS					
PO-0142	Hydrologic Restoration of the Amite River Diversion Canal	\$62,574	\$60,837	\$34,570	\$157,981
PO-0148	Living Shoreline	\$83,162	\$2,960	\$33,193	\$119,315
PO-0152	Lake Borgne and MRGO Shoreline Protection	\$0	\$0	\$0	\$0
Total Expenditures		\$3,481,770	\$2,120,338	\$2,118,556	\$7,601,349
NFWF Expenditures (See Table 28)		\$529,200	\$351,312	\$351,312	\$1,231,824
NRDA Expenditures (See Table 28)		\$2,379,000	\$934,200	\$1,010,046	\$4,323,246
Surplus Expenditures (See Table 20)		\$117,620	\$96,312	\$86,840	\$300,772
LOSCO Expenditures		\$121,568	\$113,544	\$113,544	\$348,656
Trust Fund Expenditures		\$334,382	\$624,970	\$556,814	\$1,516,166
^{1.} Monitoring expenditures funded with remaining BERM to Barrier funds (included in Trust Fund Carry Forward in Table 12). ^{2.} Monitoring expenditures funded with Surplus funds (see Table 20).					

TABLE 24: CWPRA PROJECTS WITH O&M BUDGET PROJECT EXPENDITURES^{1,2,3}

ID	Project Name	FY 2021	FY 2022	FY 2023	Program Total (FY 2021 - 2023)
BA-0002	GIWW (Gulf Intracoastal Waterway) to Clovelly Hydrologic Restoration	\$447,652	\$0	\$0	\$447,652
BA-0003-C	Naomi Outfall Management	\$22,869	\$23,470	\$0	\$46,339
BA-0020	Jonathan Davis Wetland Protection	\$6,808	\$6,986	\$113,593	\$127,387
BA-0023	Barataria Bay Waterway West Side Shoreline Protection	\$30,000	\$0	\$0	\$30,000
BA-0026	Barataria Bay Waterway East Side Shoreline Protection	\$44,578	\$4,736	\$0	\$49,314
BA-0027	Barataria Basin Landbridge Shoreline Protection, Phases 1 and 2	\$28,000	\$3,552	\$4,736	\$36,288
BA-0027-C	Barataria Basin Landbridge Shoreline Protection, Phase 3	\$28,000	\$3,552	\$4,736	\$36,288
BA-0027-D	Barataria Basin Landbridge Shoreline Protection Phase 4	\$128,640	\$3,552	\$4,736	\$136,928
BA-0034-2	Hydrologic Restoration and Vegetative Plantings in the Des Allemands Swamp	\$27,104	\$4,736	\$4,736	\$36,576
BA-0035	Pass Chaland to Grand Bayou Pass Barrier Shoreline Restoration	\$5,032	\$5,150	\$5,210	\$15,392
BA-0037	Little Lake Shoreline Protection/ Dedicated Dredging Near Round Lake	\$20,000	\$4,736	\$4,736	\$29,472
BA-0038	Pelican Island and Pass La Mer to Chaland Pass Restoration	\$5,506	\$154,120	\$5,683	\$165,308
BA-0039	Bayou Dupont Sediment Delivery System	\$1,066	\$1,066	\$3,907	\$6,038
BA-0041	South Shore of the Pen Shoreline Protection and Marsh Creation	\$118,552	\$26,226	\$3,670	\$148,449
BA-0042	Lake Hermitage Marsh Creation	\$3,789	\$3,907	\$3,907	\$11,603
BA-0048	Bayou Dupont Marsh and Ridge Creation	\$6,867	\$6,986	\$7,104	\$20,957
BA-0068	Grand Liard Marsh and Ridge Restoration	\$6,867	\$7,045	\$7,104	\$21,016
BA-0125	Northwest Turtle Bay Marsh Creation	\$135,920	\$5,920	\$5,920	\$147,760
BA-0164	Bayou Dupont Sediment Delivery - Marsh Creation 3	\$3,730	\$77,191	\$3,848	\$84,769
BA-0171	Caminada Headland Back Barrier Marsh Creation	\$5,920	\$5,920	\$5,920	\$17,760
BS-0003-A	Caernarvon Diversion Outfall Management	\$90,621	\$129,279	\$0	\$219,900
BS-0011	Delta Management at Fort St. Philip	\$6,216	\$6,453	\$6,630	\$19,299
BS-0016	South Lake Lery Shoreline and Marsh Restoration	\$104,920	\$362,170	\$5,920	\$473,010
CS-0004-A	Cameron-Creole Maintenance	\$254,600	\$254,600	\$254,600	\$763,800
CS-0011-B	Sweet Lake/Willow Lake Hydrologic Restoration	\$4,736	\$4,736	\$4,736	\$14,208
CS-0023	Replace Sabine Refuge Water Control Structures at Headquarters Canal, West Cove Canal, and Hog Island Gully	\$97,656	\$54,736	\$54,736	\$207,128
CS-0024	Perry Ridge Shore Protection	\$4,736	\$0	\$0	\$4,736
CS-0027	Black Bayou Hydrologic Restoration	\$14,440	\$14,736	\$14,736	\$43,912
CS-0028-2	Sabine Refuge Marsh Creation, Increment 2	\$438,880	\$438,880	\$438,880	\$1,316,640
CS-0028-4-5	Sabine Refuge Marsh Creation, Increments 4 & 5	\$78,880	\$8,880	\$8,880	\$96,640
CS-0029	Black Bayou Culverts Hydrologic Restoration	\$51,840	\$51,840	\$51,840	\$155,520
CS-0030	GIWW - Perry Ridge West Bank Stabilization	\$358,840	\$0	\$0	\$358,840
CS-0031	Holly Beach Sand Management	\$64,440	\$4,736	\$4,736	\$73,912
CS-0032	East Sabine Lake Hydrologic Restoration	\$138,880	\$5,328	\$5,328	\$149,536
CS-0049	Cameron-Creole Freshwater Introduction - Vegetative Plantings	\$54,736	\$54,736	\$54,736	\$164,208
CS-0054	Cameron-Creole Watershed Grand Bayou Marsh Creation	\$9,472	\$67,863	\$141,840	\$219,175
CS-0059	Oyster Bayou Marsh Creation & Terracing	\$101,840	\$4,736	\$101,840	\$208,416
CS-0066	Cameron Meadows Marsh Creation and Terracing	\$4,440	\$4,440	\$4,736	\$13,616
LA-0003-B	Coastwide Nutria Control Program	\$3,230,920	\$3,113,406	\$3,134,631	\$9,478,957
LA-0039	Coastwide Plantings Program	\$44,128	\$0	\$0	\$44,128
LA-0284	Coastwide Salvinia Weevil Propagation Facility	\$102,670	\$102,670	\$102,670	\$308,010
ME-0004	Freshwater Bayou Wetland (Phases 1 & 2)	\$4,736	\$4,736	\$4,736	\$14,208

TABLE 24: CWPRA PROJECTS WITH O&M BUDGET PROJECT EXPENDITURES^{1,2,3} (CONTINUED)

ID	Project Name	FY 2021	FY 2022	FY 2023	Program Total (FY 2021 - 2023)
ME-0011	Humble Canal Hydrologic Restoration	\$284,736	\$19,736	\$19,736	\$324,208
ME-0013	Freshwater Bayou Bank Stabilization	\$4,736	\$4,736	\$4,736	\$14,208
ME-0014	Pecan Island Terracing	\$4,736	\$4,736	\$4,736	\$14,208
ME-0016	Freshwater Introduction South of Highway 82	\$14,736	\$14,736	\$14,736	\$44,208
ME-0018	Rockefeller Refuge Gulf Shoreline Stabilization	\$4,440	\$4,736	\$4,736	\$13,912
ME-0019	Grand-White Lakes Landbridge Protection	\$454,736	\$4,736	\$4,736	\$464,208
ME-0020	South Grand Chenier Hydrologic Restoration Project	\$4,440	\$4,736	\$4,736	\$13,912
ME-0021	Grand Lake Shoreline Protection (CIAP + Tebo Point)	\$14,736	\$14,736	\$14,736	\$44,208
ME-0022	South White Lake Shoreline Protection	\$4,440	\$4,736	\$4,736	\$13,912
MR-0009	Delta Wide Crevasses	\$1,017,760	\$5,920	\$5,920	\$1,029,600
PO-0006	Fritchie Marsh Restoration	\$150,000	\$0	\$0	\$150,000
PO-0016	Bayou Sauvage National Wildlife Refuge Hydrologic Restoration, Phase 1	\$1,480	\$4,203	\$0	\$5,683
PO-0018	Bayou Sauvage National Wildlife Refuge Hydrologic Restoration, Phase 2	\$1,480	\$1,480	\$4,144	\$7,104
PO-0022	Bayou Chevee Shoreline Protection	\$125,000	\$10,000	\$0	\$135,000
PO-0024	Hopedale Hydrologic Restoration	\$10,762	\$10,821	\$10,821	\$32,403
PO-0030	Lake Borgne Shoreline Protection	\$1,026,640	\$5,920	\$5,920	\$1,038,480
PO-0033	Goose Point/Point Platte Marsh Creation	\$117,760	\$4,144	\$4,144	\$126,048
PO-0075	Labranche East Marsh Creation	\$4,144	\$4,144	\$4,144	\$12,432
PO-0104	Bayou Bonfouca Marsh Creation Project	\$20,422	\$0	\$0	\$20,422
PO-0133	Labranche Central Marsh Creation	\$4,144	\$4,144	\$4,144	\$12,432
PO-0169	New Orleans Landbridge Shoreline Stabilization and Marsh Creation	\$2,960	\$4,440	\$4,440	\$11,840
TE-0028	Brady Canal Hydrologic Rest.	\$561,840	\$0	\$0	\$561,840
TE-0034	Penchant Basin Natural Resources Plan Increment 1	\$124,840	\$4,736	\$4,736	\$134,312
TE-0037	New Cut Dune and Marsh Restoration	\$15,000	\$7,736	\$7,736	\$30,472
TE-0039	South Lake Decade Freshwater Introduction	\$4,736	\$4,736	\$4,736	\$14,208
TE-0040	Timbalier Island Dune and Marsh Restoration	\$150,000	\$7,736	\$7,736	\$165,472
TE-0043	GIWW Bank Restoration of Critical Areas in Terrebonne	\$400,000	\$9,736	\$4,736	\$414,472
TE-0044	North Lake Mechant Landbridge Restoration	\$1,785,520	\$4,736	\$4,736	\$1,794,992
TE-0045	Terrebonne Bay Shore Protection Demonstration	\$490,260	\$0	\$0	\$490,260
TE-0046	West Lake Boudreaux Shoreline Protection and Marsh Creation	\$15,000	\$4,736	\$4,736	\$24,472
TE-0048	Raccoon Island Shoreline Protection/Marsh Creation	\$90,000	\$4,736	\$4,736	\$99,472
TE-0050	Whiskey Island Back Barrier Marsh Creation	\$211,840	\$14,840	\$7,736	\$234,416
TE-0052	West Belle Pass Barrier Headland Restoration	\$15,000	\$4,736	\$4,736	\$24,472
TE-0072	Lost Lake Marsh Creation and Hydrologic Restoration	\$89,800	\$83,880	\$83,880	\$257,560
TE-0138	Bayou DeCade Ridge and Marsh Creation	\$198,680	\$5,920	\$5,920	\$210,520
TV-0004	Cote Blanche Hydrologic Restoration	\$21,840	\$21,840	\$21,840	\$65,520
TV-0012	Little Vermilion Bay Sediment Trapping	\$4,736	\$0	\$0	\$4,736
TV-0013-A	Oaks/Avery Canal Hydrologic Restoration, Increment 1	\$74,440	\$4,736	\$4,736	\$83,912
TV-0014	Marsh Island Hydrologic Restoration	\$4,440	\$4,736	\$0	\$9,176
TV-0015	Sediment Trapping at "The Jaws"	\$55,920	\$4,736	\$4,736	\$65,392
TV-0017	Lake Portage Land Bridge	\$4,440	\$4,736	\$4,736	\$13,912
TV-0018	Four Mile Canal Terracing and Sediment Trapping	\$114,440	\$4,736	\$4,736	\$123,912
TV-0021	East Marsh Island Marsh Creation	\$74,736	\$4,736	\$4,736	\$84,208

TABLE 24: CWPBRA PROJECTS WITH O&M BUDGET PROJECT EXPENDITURES^{1,2,3} (CONTINUED)

ID	Project Name	FY 2021	FY 2022	FY 2023	Program Total (FY 2021 - 2023)
TV-0063	Coles Bayou Marsh Restoration	\$9,472	\$4,736	\$141,840	\$156,048
TOTAL CWPBRA O&M Expenditures		\$14,130,793	\$5,383,907	\$5,040,579	\$24,555,280
Federal CWPBRA O&M Expenditures		\$11,627,664	\$4,576,321	\$4,284,492	\$20,488,477
Surplus CWPBRA O&M Expenditures (See Table 20)		\$451,189	\$0	\$0	\$451,189
State CWPBRA O&M Expenditures		\$2,051,941	\$807,586	\$756,087	\$3,615,614
1. Table shows all approved CWPBRA projects. Demonstration and vegetative planting projects are not shown as they have no O&M budgets. Other projects without O&M budgets have "None" entered in the budget columns. Projects not scheduled to complete within a given year have "Not Constructed" entered in the budget column(s). 2. State share is based on CWPBRA cost share of 85% Federal/15% State except for PPL 5-6 projects, which have a 90% Federal/10% State cost share. 3. Projects that the USACE is responsible for O&M are indicated by (USACE) after the project number.					

TABLE 25: O&M PROJECTED EXPENDITURES FOR CWPBRA PROJECTS WITHOUT FEDERAL COST SHARE

ID	Project Name	FY 2021	FY 2022	FY 2023	Program Total (FY 2021 - 2023)
TE-0020	Isles Dernieres Restoration East Island	\$7,736	\$7,736	\$7,736	\$23,208
TE-0024	Isles Dernieres Restoration Trinity Island	\$7,736	\$7,736	\$7,736	\$23,208
TE-0025	East Timbalier Island Sediment Restoration, Phase 1	\$7,736	\$4,736	\$4,736	\$17,208
TE-0027	Whiskey Island Restoration	\$7,736	\$7,736	\$7,736	\$23,208
TE-0030	East Timbalier Island Sediment Restoration, Phase 2	\$7,736	\$4,736	\$4,736	\$17,208
Total Expenditures		\$38,680	\$32,680	\$32,680	\$104,040

TABLE 26: PROJECTED EXPENDITURES FOR MONITORING OF WRDA PROJECTS

ID	Project Name	FY 2021	FY 2022	FY 2023	Program Total (FY 2021 - 2023)
BA-0001	Davis Pond Freshwater Diversion	\$1,132,979	\$1,128,608	\$863,664	\$3,125,251
BS-0008	Caernarvon Freshwater Diversion	\$1,048,664	\$148,664	\$148,664	\$1,345,992
Total Expenditures (GOMESA)¹		\$2,181,643	\$1,277,272	\$1,012,328	\$4,471,243
1. O&M expenditures of WRDA projects are subject to a 75% federal/25% state cost share. At present, CPRA is funding its 25% cost share of O&M costs with GOMESA funds, and will seek reimbursement from the USACE for the 75% federal match.					

TABLE 27: PROJECTED EXPENDITURES FOR O&M OF OTHER PROJECTS

ID	Project Name	FY 2021	FY 2022	FY 2023	Program Total (FY 2021 - 2023)
HURRICANE PROTECTION PROJECTS					
BA-0066	West Bank and Vicinity ¹	\$506,122	\$516,308	\$450,354	\$1,472,784
BA-0067	New Orleans and Vicinity ¹	\$270,736	\$221,282	\$320,310	\$812,328
LA-0154	FEMA LAMP ¹	\$144,294	\$115,548	\$100,000	\$359,842
LA-0206	HSDRRS Armoring ¹	\$168,272	\$189,440	\$203,826	\$561,538
LA-0253	Flood Protection Inspections ¹	\$253,251	\$279,791	\$293,781	\$826,823
LA-0269	CPRA Letter of No Objection	\$485,888	\$535,692	\$562,476	\$1,584,056
LA-0271	O&M Division State Wide Levee Board Meetings	\$123,901	\$130,097	\$136,601	\$390,599
PO-0057	SELA- Overall ¹	\$162,515	\$119,641	\$110,155	\$392,311
PO-0060	Permanent Canal Closures and Pump Stations ¹	\$297,178	\$202,036	\$45,350	\$544,564
PO-0063	Lake Pontchartrain and Vicinity ¹	\$471,909	\$449,382	\$393,783	\$1,315,074
USACE MITIGATION PROJECTS					
BA-0109	HSDRRS Mitigation - WBV	\$18,944	\$18,944	\$18,944	\$56,832
BA-0154	Previously Authorized Mitigation - WBV	\$18,944	\$18,944	\$18,944	\$56,832
BA-0158	New Orleans to Venice Mitigation - Plaquemines Non-Federal	\$7,104	\$7,104	\$7,104	\$21,312
BA-0159	New Orleans to Venice Mitigation - Federal	\$7,104	\$7,104	\$7,104	\$21,312
PO-0038SF	MRGO Closure Structure	\$62,080	\$62,080	\$62,080	\$186,240
PO-0093	MRGO - Lake Borgne - Bayou Dupre Segment	\$7,992	\$7,992	\$7,992	\$23,976
PO-0094	MRGO - Lake Borgne - Bayou Bienvenue Segment	\$7,992	\$7,992	\$7,992	\$23,976
PO-0095	MRGO - Lake Borgne - Shell Beach Segment	\$7,992	\$7,992	\$7,992	\$23,976
PO-0121	HSDRRS Mitigation - LPV	\$39,862	\$39,862	\$39,362	\$119,085
PO-0145	LPV Task Force Guardian Mitigation - Bayou Sauvage	\$18,944	\$18,944	\$18,944	\$56,832
PO-0146	LPV Mitigation Project, Manchac WMA Marsh Creation	\$18,944	\$13,287	\$13,287	\$45,518
PO-0152	Lake Borgne and MRGO Shoreline Protection	\$7,992	\$7,992	\$7,992	\$23,976
NFWF PROJECTS					
BA-0143	Caminada Headland Beach and Dune Restoration INCR ²	\$244,680	\$103,680	\$261,680	\$610,040
TE-0143	Terrebonne Basin Barrier Island	\$5,920	\$5,920	\$5,920	\$17,760
NRDA PROJECTS					
BA-0111	Shell Island West - NRDA	\$425,000	\$125,500	\$55,500	\$606,000
BA-0142	NRDA Cheniere Ronquille Barrier Island Restoration	\$313,500	\$198,500	\$55,500	\$567,500
BA-0197	West Grand Terre Beach Nourishment and Stabilization	\$0	\$32,000	\$32,000	\$64,000
BA-0202	Queen Bess Island Restoration	\$1,750,000	\$300,000	\$300,000	\$2,350,000
CS-0080	Rabbit Island Restoration	\$971,640	\$84,880	\$337,684	\$1,394,204
PO-0180	Lake Borgne Marsh Creation- Increment ¹	\$0	\$0	\$14,370	\$14,370
TE-0100	NRDA Caillou Lake Headlands	\$855,500	\$730,500	\$55,500	\$1,641,500
STATE-ONLY PROJECTS					
BA-0003	Naomi Siphon	\$12,340	\$100,000	\$12,340	\$124,680
BA-0004	West Point a la Hache Siphon	\$12,340	\$100,000	\$12,340	\$124,680
BA-0005	Fort Livingston	\$91,020	\$35,496	\$12,236	\$138,752
BA-0015-X1	Lake Salvador Shoreline Protection Project Extension	\$5,920	\$0	\$0	\$5,920
BA-0015-X2	Lake Salvador Shoreline Protection Project Extension Phase 3	\$5,920	\$0	\$0	\$5,920
BA-0016	Bayou Segnette Shoreline Protection	\$5,920	\$0	\$0	\$5,920
CS-0002	Rycade Canal	\$32,104	\$0	\$0	\$32,104
LA-0013	Coastal Forest Conservation Initiative	\$0	\$0	\$0	\$0

TABLE 27: PROJECTED EXPENDITURES FOR O&M OF OTHER PROJECTS (CONTINUED)

ID	Project Name	FY 2021	FY 2022	FY 2023	Program Total (FY 2021 - 2023)
LA-0099	Public Outreach and Field Trips	\$20,128	\$20,128	\$20,128	\$60,384
LA-0273	Gulf Coast Joint Venture and Partnerships	\$8,688	\$8,688	\$8,688	\$26,064
ME-0001	Pecan Island Structure	\$19,736	\$19,736	\$19,736	\$59,208
PO-0001	Violet Siphon	\$328,283	\$25,840	\$25,840	\$379,963
PO-0036	Orleans Landbridge	\$7,104	\$7,104	\$7,104	\$21,312
PO-0072	Biloxi Marsh	\$40,357	\$40,357	\$40,357	\$121,070
PO-0142	Hydrologic Restoration of the Amite River Diversion Canal	\$13,287	\$13,287	\$13,287	\$39,862
PO-0148	Living Shoreline	\$33,748	\$33,748	\$33,748	\$101,244
TE-0001	Montegut Wetlands	\$0	\$0	\$0	\$0
TE-0003	Bayou LaCache Wetlands	\$0	\$0	\$158,880	\$158,880
TV-0072	Quintana Canal	\$14,440	\$14,736	\$14,736	\$43,912
TV-0013-B	Avery Canal	\$14,440	\$14,736	\$14,736	\$43,912
N/A	Maintenance Surveys	\$33,744	\$33,744	\$33,744	\$101,232
N/A	GPS Network (continued development and maintenance)	\$83,288	\$83,288	\$83,288	\$249,864
Total Expenditures		\$8,457,007	\$5,109,322	\$4,463,715	\$18,030,043
NFWF Expenditures (See Table 28)		\$250,600	\$109,600	\$267,600	\$627,800
NRDA Expenditures (See Table 28)		\$4,315,640	\$1,471,380	\$850,554	\$6,637,574
Surplus Expenditures (See Table 20)		\$1,438,200	\$1,020,220	\$1,098,425	\$3,556,845
Trust Fund Expenditures		\$2,452,567	\$2,508,122	\$2,247,136	\$7,207,824
1. Expenditures partially funded with Surplus funds (see Table 20).					

TABLE 28: OIL SPILL PROJECTED EXPENDITURES¹

ID	Project Name	FY 2021	FY 2022	FY 2023	Program Total (FY 2021 - 2023)
DEEPWATER HORIZON NRDA					
AT-0019	Atchafalaya WMA Boat Launch	\$830,450	\$0	\$0	\$830,450
AT-0020	Atchafalaya WMA Campground Improvements	\$3,883,800	\$0	\$0	\$3,883,800
BA-0153	Mid-Barataria Sediment Diversion (Construction)	\$100,000	\$350,000,000	\$300,000,000	\$650,100,000
BA-0197	West Grand Terre Beach Nourishment and Stabilization	\$72,949,568	\$12,650,432	\$0	\$85,600,000
BA-0202	Queen Bess Island Restoration	\$14,800	\$0	\$0	\$14,800
BA-0203	Barataria Basin Ridge and Marsh Restoration - Spanish Pass Increment	\$50,766,600	\$50,766,600	\$0	\$101,533,200
BA-0207	Large-Scale Barataria Marsh Creation	\$100,000	\$100,000	\$100,000	\$300,000
BA-0213	Bayou Segnette State Park Improvements	\$1,542,259	\$0	\$0	\$1,542,259
BA-0214	Grand Isle State Park Improvements	\$3,008,880	\$0	\$0	\$3,008,880
BA-0240	Grand Cheniere Ridge Marsh Creation	\$5,831,500	\$39,230,000	\$11,365,000	\$56,426,500
CS-0080	Rabbit Island Restoration	\$9,040,000	\$0	\$0	\$9,040,000
ME-0036	Rockefeller Piers and Signage	\$54,301	\$0	\$0	\$54,301
MR-0169	Pass-a-Loutre Crevasses NRDA	\$115,684	\$0	\$0	\$115,684
MR-0170	Pass-a-Loutre Campgrounds NRDA	\$276,736	\$0	\$0	\$276,736
PO-0163	Golden Triangle Marsh Creation	\$35,011,600	\$14,988,400	\$0	\$50,000,000
PO-0174	Biloxi Marsh Living Shoreline	\$21,514,800	\$28,972,313	\$2,800,000	\$53,287,113
PO-0180	Lake Borgne Marsh Creation - Increment 1	\$47,300,000	\$40,000,000	\$24,000,000	\$111,300,000

TABLE 28: OIL SPILL PROJECTED EXPENDITURES¹ (CONTINUED)

ID	Project Name	FY 2021	FY 2022	FY 2023	Program Total (FY 2021 - 2023)
PR-0001	Middle Pearl River WMA Boat Launch	\$518,000	\$0	\$0	\$518,000
TE-0139	Terrebonne Basin Ridge and Marsh Creation - Bayou Terrebonne Increment	\$2,500,000	\$40,200,000	\$40,000,000	\$82,700,000
TE-0144	Island Road Fishing Piers	\$2,500,000	\$500,000	\$0	\$3,000,000
TE-0146	Pointe-aux-Chenes WMA Enhancements	\$3,155,920	\$0	\$0	\$3,155,920
TV-0081	Cypremort Point State Park Improvements	\$534,924	\$3,361,502	\$416,578	\$4,313,004
N/A	NRDA Replenish and Protect Living Coastal and Marine Resources	\$18,063,000	\$21,000,000	\$122,000,000	\$161,063,000
N/A	NRDA Recreational Use 1 (External Lead) ²	\$6,480,000	\$945,000	\$945,000	\$8,370,000
N/A	NRDA Recreational Use 2 (External Lead) ²	\$9,000,000	\$0	\$0	\$9,000,000
N/A	NRDA Restoration Planning	\$2,596,474	\$2,075,403	\$1,854,911	\$6,526,788
N/A	NRDA Nutrient Reduction	\$3,000,000	\$3,000,000	\$3,000,000	\$9,000,000
N/A	Regionwide Trustee Implementation Group	\$1,000,000	\$1,000,000	\$1,000,000	\$3,000,000
N/A	NRDA Adaptive Management	\$11,215,125	\$8,846,431	\$6,682,690	\$26,744,246
N/A	NRDA OM&M (See Tables 22 and 26)	\$6,694,640	\$2,405,580	\$1,860,600	\$10,960,820
Total Deepwater Horizon NRDA Expenditures		\$319,599,061	\$620,041,661	\$516,024,779	\$1,455,665,501
NFWF PROJECTS					
BA-0153	Mid-Barataria Sediment Diversion (E&D)	\$28,000,000	\$15,000,000	\$3,000,000	\$46,000,000
BS-0030	Mid-Breton Sediment Diversion	\$23,000,000	\$23,000,000	\$15,000,000	\$61,000,000
LA-0276	Sediment Diversion Management	\$3,000,000	\$2,000,000	\$1,500,000	\$6,500,000
TE-0110	Increase Atchafalaya Flow to Eastern Terrebonne	\$3,750,000	\$3,750,000	\$3,000,000	\$10,500,000
TE-0143	Terrebonne Basin Barrier Island and Beach Nourishment ³	\$103,707,874	\$34,647,081	\$0	\$138,354,955
N/A	NFWF Adaptive Management	\$6,350,000	\$4,989,785	\$4,114,516	\$15,454,301
N/A	NFWF OM&M (See Tables 22 and 26)	\$779,800	\$460,912	\$618,912	\$1,859,624
Total NFWF Expenditures		\$168,587,674	\$83,847,778	\$27,233,428	\$279,668,880
RESTORE PROJECTS					
BA-0197	West Grand Terre Beach Nourishment and Stabilization	\$10,000	\$0	\$0	\$10,000
CS-0065	Calcasieu Ship Channel Salinity Control Measures	\$3,148,000	\$3,148,000	\$40,000,000	\$46,296,000
MR-0168	Lowermost Mississippi River Management Program	\$4,000,000	\$3,300,000	\$0	\$7,300,000
PO-0029	River Reintroduction into Maurepas Swamp	\$8,000,000	\$34,500,000	\$63,000,000	\$105,500,000
TE-0113	Houma Navigation Canal Lock Complex	\$30,000,000	\$110,000,000	\$140,000,000	\$280,000,000
N/A	RESTORE Adaptive Management	\$7,530,000	\$6,664,409	\$6,357,419	\$20,551,828
N/A	RESTORE Bucket 2 Planning Grants	\$500,000	\$300,000	\$300,000	\$1,100,000
N/A	Parish Matching Program - Projects ^{4,5}	\$15,000,000	\$5,000,000	\$0	\$20,000,000
N/A	Parish Matching Program - CPRA Costs	\$625,000	\$500,000	\$500,000	\$1,625,000
N/A	RESTORE Center of Excellence	\$1,950,000	\$1,850,000	\$1,850,000	\$5,650,000
Total RESTORE Expenditures		\$62,763,000	\$165,262,409	\$252,007,419	\$480,032,828
Total Oil Spill Expenditures		\$550,949,735	\$869,151,848	\$795,265,626	\$2,215,367,209
^{1.} Red font denotes projected expenditures for which funding has not yet been procured. Project receiving supplemental funding from Surplus funds (see Table 20). ^{2.} See Table 309 for list of projects. ^{3.} Project will utilize funding initially approved for East Timbalier Island Restoration (TE-0118). ^{4.} Expenditures represent potential matching funds for project implementation to eligible parishes identified in 33 U.S.C. §1321(t)(1)(D)(II) provided that the project constitutes an eligible activity under 31 C.F.R. §§ 34.201 and 34.203 and meets the purposes identified in La. R.S. 49:214.5.4(G) & (I). ^{5.} See Table 31 for list of projects.					

TABLE 29: GOMESA PROJECTED EXPENDITURES

ID	Project Name	FY 2021	FY 2022	FY 2023	Program Total (FY 2021 - 2023)
AT-0017	Bayou Chene Option 1	\$50,000,000	\$25,000,000	\$0	\$75,000,000
BA-0075-2	Rosethorne Basin Phase 1 & 2 (LAILD)	\$6,500,000	\$4,500,000	\$0	\$11,000,000
BA-0210	Grand Isle & Vicinity Beach Stabilization (GILD)	\$3,267,670	\$8,880	\$0	\$3,276,550
BA-0216	Magnolia Ridge Levee Lift and Road (St. Charles Parish)	\$500,000	\$0	\$0	\$500,000
BA-0218	Levee Improvements for Gheens Community (NLLD)	\$300,000	\$0	\$0	\$300,000
BA-0219	Davis Pond Upper Barataria Risk Reduction (LBLD)	\$285,199	\$5,335,520	\$0	\$5,620,719
BA-0221	Pumping Capacity Improvements Phase 1 (BLFWD)	\$3,832,000	\$3,831,108	\$3,830,922	\$11,494,030
BA-0222	NOV-NF Drainage Canal Relocation (Plaquemines Parish)	\$4,500,000	\$0	\$0	\$4,500,000
BA-0223	Goose Bayou (Penn Levee) (LAILD)	\$2,926,911	\$6,766,667	\$7,106,422	\$16,800,000
BA-0231	Storm Surge Risk Reduction for Reach E-North (SLLD)	\$1,500,000	\$0	\$0	\$1,500,000
BA-0232	Des Allemands FDA Pump Station Rehabilitation	\$250,000	\$0	\$0	\$250,000
BA-0241	Zeller Larousse Phase II levee improvements (NLLD)	\$1,000,000	\$0	\$0	\$1,000,000
BA-0242	Levee improvements for Gheens community Phase II (NLLD)	\$2,275,000	\$0	\$0	\$2,275,000
BA-0243	100-yr Levee Lift; NOV-NF-W-4, Oakville to LaReusitte and MRL 179 (Plaquemines Parish)	\$6,000,000	\$4,000,000	\$0	\$10,000,000
BA-0244	T-Wall Kellog Pump Station (St. Charles Parish)	\$2,500,000	\$0	\$0	\$2,500,000
BA-0246	Storm Surge Risk Reduction for reach D-South Elevation to +18 ft includes D-Ramp (SLLD)	\$1,300,000	\$0	\$0	\$1,300,000
BA-0247	Floodwall Improvement for reach D-South at Crawfish Farm (SLLD)	\$1,000,000	\$0	\$0	\$1,000,000
PO-0062	West Shore Lake Pontchartrain (PLD)	\$4,500,000	\$0	\$0	\$4,500,000
PO-0184	St. Tammany Ring Levee (St. Tammany Parish)	\$100,000	\$3,000,000	\$3,000,000	\$6,100,000
TE-0147	Hollywood Canal Closure Structure (NLLD)	\$1,463,020	\$5,135,520	\$0	\$6,598,540
TE-0148	40 Arpent Canal Levee - Lockport Co. Canal to Butch Hill Station (NLLD)	\$5,240,000	\$0	\$0	\$5,240,000
TE-0151	Grand Bayou Floodgate	\$8,500,000	\$0	\$0	\$8,500,000
TE-0152	Storm Surge Risk Reduction for US-90 at Bayou Folse	\$850,000	\$0	\$0	\$850,000
TE-0158	Reach L Mitigation (SLLD)	\$1,000,000	\$0	\$0	\$1,000,000
TE-0159	Elliot Jones Pump Station (TLCD)	\$5,000,000	\$5,000,000	\$0	\$10,000,000
TV-0085	Yokley Levee (SMLD)	\$3,000,000	\$0	\$0	\$3,000,000
N/A	GOMESA CPRA Allocation	\$3,600,000	\$2,100,000	\$3,000,000	\$8,700,000
N/A	GOMESA OM&M- Diversions	\$8,299,110	\$12,422,676	\$4,843,220	\$25,565,006
N/A	GOMESA Adaptive Management (See Table 10)	\$14,485,000	\$4,500,000	\$2,425,000	\$21,410,000
N/A	Future GOMESA Projects (TBD) ¹	\$0	\$4,300,000	\$135,348,196	\$139,648,196
Total Expenditures		\$143,973,910	\$85,900,371	\$159,553,760	\$389,428,041

1. GOMESA funding in outlying years is contingent upon receipt of sufficient funding. Projects proposed to begin receiving funding in FY 2022-2023 include the following:
- Floodwall Improvement for Golden Meadow Pump Station (SLLD)- FY 2022
 - Reach F Berm Improvement (SLLD)- FY 2022
 - Sunset Levee Upper Barataria Risk Reduction (UBRR) (LBLD)- FY 2022
 - Magnolia Ridge Levee Pipeline T-Wall (St. Charles Parish)- FY 2023
 - HNC Lock Complex (TLCD)- FY 2023



APPENDICES



TABLE 30: LIST OF APPROVED NRDA RECREATIONAL USE PROJECTS

ID	Project Name	Implementing Agency Program	Total Project Estimate
AT-0019	Atchafalaya Delta WMA Boat Access	CPRA	\$920,450
AT-0020	Atchafalaya Delta WMA Campgrounds	CPRA	\$3,248,000
BA-0213	Bayou Segnette State Park Improvements	State Parks	\$2,126,724
BA-0235	Belle Chasse Boat Launch	Plaquemines Parish	\$250,000
TV-0084	Chitimacha Boat Launch	Chitimacha Tribe	\$650,000
TV-0081	Cypremort Point State Park Improvements	CPRA	\$4,477,338
BA-0237	Des Allemands Boat Launch	St. Charles Parish	\$1,841,116
BA-0208	Elmer's Island Access	LDWF	\$6,000,000
BA-0214	Grand Isle State Park Improvements	CPRA	\$6,126,967
TV-00883	Improvements to Grand Avoille Boat Launch	St. Mary's Parish	\$247,426
TE-0144	Island Road Fishing Piers	CPRA	\$3,000,000
N/A	Jean Lafitte Improvements	DOI	\$1,284,062
C5-0083	Lake Charles Science Center	LDWF	\$7,000,000
PR-0001	Middle Pearl WMA Boat Launch	CPRA	\$575,000
MR-0170	Pass a Loutre WMA Campgrounds	CPRA	\$1,624,000
MR-0169	Pass a Loutre WMA Crevasse Access	CPRA	\$1,568,000
TE-0146	Pointe-aux-Chenes WMA Enhancements	CPRA	\$5,012,000
ME-0036	Rockefeller Piers and Signage	CPRA	\$690,000
CS-0084	Sam Houston Jones State Park Improvements	State Parks	\$2,425,250
BS-0036	St. Bernard State Park Improvements	State Parks	\$1,098,625
LA-0298	Statewide Artificial Reefs	LDWF	\$6,000,000
BA-0236	The Wetlands Center	Town of Lafitte	\$2,000,000
BA-0234	WHARF Phase 1	City of Westwego	\$995,000

TABLE 31: LIST OF APPROVED RESTORE PARISH MATCHING PROJECTS

ID	Project Name	Active Phase	Parish	Total Project Estimate
TV-0079	Freshwater Bayou Canal Shoreline Protection	E&D, CON	Vermilion	\$4.59 M
TE-0145	Grand Bayou Freshwater Reintroduction	E&D	Lafourche	\$412,722
BS-0034	Lake Lery Marsh Creation	CON	St. Bernard	\$2.78 M
PO-0183	Manchac Landbridge Shoreline Protection	E&D, CON	Tangipahoa	\$3 M
BA-0209	Paradis Canal Gate	CON	St. Charles	\$2.54 M
ME-0035	Rockefeller Shoreline Stabilization	CON	Cameron	\$6.67 M

LIST OF ACRONYMS

Acronym	Project Name
BERM	Berm to Barrier
BIMP	Barrier Island Maintenance Program
BLFWD	Bayou Lafourche Freshwater District
BP	British Petroleum
CDBG	Community Development Block Grant
CIAP	Coastal Impact Assistance Program
CON	Construction
CPR	Coastal Protection and Restoration (Trust Fund)
CPRA	Coastal Protection and Restoration Authority
CRMS	Coastwide Reference Monitoring System
CWPPRA	Coastal Wetlands Planning, Protection and Restoration Act
DOI	Department of the Interior
DOTD	Department of Transportation and Development
DWH	<i>Deepwater Horizon</i>
E&D	Engineering and Design
EIS	Environmental Impact Statement
E-North	SLLD Levee reach
EPA	Environmental Protection Agency
E-South	SLLD Levee reach
FEMA	Federal Emergency Management Agency
FQ	Fiscal Quarter
FY	Fiscal Year
GIILD	Grand Isle Independent Levee District
GIWW	Gulf Intracoastal Waterway
GOMESA	Gulf of Mexico Energy Security Act
GPS	Global Positioning System
HDDA	Hopper Dredge Disposal Area
HSDRRS	Greater New Orleans Hurricane and Storm Damage Risk Reduction System
HUD	United States Department of Housing and Urban Development
JBE	John Bel Edwards
LAILD	Lafourche Area Independent Levee District
LAMP	Louisiana Mapping Program
LBLD	Lake Borgne Levee District
LCA	Louisiana Coastal Area
LDWF	Louisiana Department of Wildlife and Fisheries
LERRDS	Land, Easements, Rights of Way, Relocation, and Disposal Sites
LF	Linear Feet
LOSCO	Louisiana Oil Spill Coordinator's Office
LPV	Lake Pontchartrain & Vicinity
MOEX	Mitsui Oil Exploration
MRGO	Mississippi River Gulf Outlet
NFWF	National Fish and Wildlife Foundation
NLLD	North Lafourche Levee District
NOAA	National Oceanic and Atmospheric Administration
NOV-NF	New Orleans to Venice - Non-Federal

Acronym	Project Name
NRCS	National Resource Conservation Service
NRDA	Natural Resource Damage Assessment
O&M	Operations and Maintenance
OCM	Office of Coastal Management
OCPR	Office of Coastal Protection and Restoration
OM&M	Operations, Maintenance and Monitoring
OTS	Office of Technology Services
PLD	Pontchartrain Levee District
PLN	Planning
PPL	Priority Project List
PROG	Program
R.S.	Revised Statute
RESTORE	Resources and Ecosystems Sustainability, Tourist Opportunities, and Revived Economies
SELA	Southeast Louisiana
SLLD	South Lafourche Levee District
SPER	Shoreline Protection Emergency Restoration
SSPM	Small Scale Physical Model
SWAMP	System Wide Assessment and Monitoring Program
TBD	To be Determined
TFU	Task Force Unwatering
UBRR	Upper Barataria Risk Reduction
USACE	United States Army Corps of Engineers
USFWS	Department of Interior - U.S. Fish and Wildlife Service
WBV	West Bank and Vicinity
WHARF	Wetlands Harbor Activities Recreational Facility
WMA	Wildlife Management Area
WRDA	Title VII Water Resource Development Act

Basin ID	Project Name
AT	Atchafalaya
BA	Barataria
BS	Breton Sound
CS	Calcasieu Sabine
LA	Louisiana
ME	Mermentau
MR	Mississippi River
PO	Pontchartrain
PR	Pearl River
TE	Terrebonne
TV	Teche Vermilion

Project Type	Project Name
BH	Barrier Island/Headland
FD	Freshwater Diversion
HP	Hurricane Protection
HR	Hydrologic Restoration
IN	Infrastructure
MC	Marsh Creation
OR	Oyster Barrier Reef
OT	Other
SP	Shoreline Protection

APPENDICES ONLINE

WWW.COASTAL.LA.GOV/OUR-PLAN/ANNUAL-PLAN

APPENDIX A

Ongoing Protection and Restoration Project
Summaries

APPENDIX B

Barrier Island Status Report

APPENDIX C

Inventory of Non-State Projects

APPENDIX D

CPRA FY 2021 Capital Outlay Requests

APPENDIX E

FY 2021 Atchafalaya Basin Annual plan

CITATIONS

- ¹ Scott, L. C. (2019). The Economic Impact of Constructing the Mid-Barataria and Mid-Breton Sediment Diversion Projects. Restore the Mississippi Delta Campaign, The Environmental Defense Fund. Retrieved from http://mississippiriverdelta.org/files/2019/10/LorenScottDiversionEconomicReport_201910.pdf
- ² Barnes, S. R., & Virgets, S. (2017). Regional Impacts of Coastal Land Loss and Louisiana's Opportunity for Growth. LSU E.J. Ourso College of Business, Economics & Policy Research Group. Retrieved from <https://www.edf.org/sites/default/files/LSU-EPRG-Regional-Economic-Land-Loss-Risks-and-Opportunities-2017.pdf>

This public document is published at a total cost of \$0,000.00. Four hundred copies of this public document were published in this first printing at a cost of \$0,000.00. The total cost of all printings of this document including reprints is \$0,000.00.

This document was published by OTS-Production Support Services, 627 North 4th Street, Baton Rouge, LA 70802 for the Coastal Protection and Restoration Authority of Louisiana as mandated by the Legislature. This material was printed in accordance with standards for printing by state agencies established in R.S 43:31. Printing of this material was purchased in accordance with the provisions of Title 43 of the Louisiana Revised Statutes.

Coastal Protection and Restoration Authority, 2020. Annual Plan Fiscal Year 2021: Integrated Ecosystem Restoration and Hurricane Protection in Coastal Louisiana. Coastal Protection and Restoration Authority of Louisiana, Baton Rouge, LA.





@LOUISIANACPRA

WWW.COASTAL.LA.GOV



Louisiana Coastal Protection and Restoration Authority is the single state entity with authority to develop, articulate, implement, and enforce a comprehensive coastal Master Plan of unified vision, to reduce tropical storm surge flood impact, to restore our bountiful natural resources, to build land to protect our nation's critical energy infrastructure, and to secure Louisiana's coast now and for future generations.