

BARRIER ISLAND STATUS REPORT

**Fiscal Year 2021 Annual Plan
January 2020**

1.0 Introduction

The Coastal Protection and Restoration Authority (CPRA) provides this barrier island status report as part of the Annual Plan document to be submitted to each member of the Louisiana Legislature in compliance with Act 297 of the 2006 Regular Legislative Session. The Act requires that the report: 1) indicate the condition of all barrier islands; 2) provide the status of all barrier island stabilization and preservation projects under construction; and 3) outline future plans for restoration and maintenance of the barrier islands and coastal passes. Because the Annual Plan provides information about all coastal restoration projects in Louisiana (including location, status, features, acres benefited, cost, and funding source), it is appropriate to include a report on the current status of the barrier islands.

2.0 Overview of Barrier Islands

The coastline of the modern Mississippi River Delta Plain (MRDP) is bordered by numerous barrier islands related to several historic major deltaic headlands. For the sake of convenience these islands and headlands can be organized into four distinct barrier systems, each tied to an abandoned Mississippi River delta complex: from west to east they are the, Early and Late Lafourche, Modern, and St. Bernard Delta Systems (Figure 1). The back-barrier bays and lagoons are connected to the Gulf of Mexico by numerous tidal inlets, which allow the exchange of diurnal tides and separates these barrier islands from each other. The morphology of the barrier islands along the Louisiana coast is related to the sediment supply and physical processes acting in the region (Georgiou et al., 2005). Because barrier islands migrate and deteriorate over time (McBride and Byrnes, 1997), restoration of these habitats requires periodic replenishment of sediment/sand to compensate for the losses due to erosion and subsidence. Numerous hurricanes and the Deepwater Horizon oil spill have clearly demonstrated the advantage of robust barrier islands and a well-managed coastline in terms of shoreline resilience and hurricane damage reduction. These events have also highlighted the ecological concerns related to the massive loss of coastal wetland and barrier island systems (Ewing and Pope, 2006). Coastal landscapes created by these barriers can provide a significant and potentially sustainable buffer from wind and wave action as well as storm surges generated by tropical storms and hurricanes. In addition, barrier shorelines are unique habitats that represent the foundation for complex and productive coastal ecosystems.

The restoration of Louisiana's barrier islands has been a priority for a number of programs over the past several decades. In the 1990s, barrier island restoration was a priority for the Coastal Wetlands Planning, Protection and Restoration Act (CWPPRA) program, which funded construction of a number of barrier island restoration projects. So far CPRA has constructed a large number of projects to restore barrier islands and headlands in coastal Louisiana. These constructed projects have been studied and their performance has been assessed to adaptively improve resilience and persistence of new projects. Khalil and Raynie (2015) suggested a system-wide approach over restoring and maintaining individual barrier islands. They further recommended that an integrated, system-wide approach acknowledges and embraces the

interconnected nature of internal marshes, bays, tidal inlets/passes, and barrier islands as they all constitute one system. This approach was partly adopted and recommended by 2017 Coastal Master Plan (CPRA 2017). Consequently a more programmatic approach has been adopted by CPRA replacing earlier project-specific one with funding from NFWF. CPRA has recently undertaken Barrier Island System Management (BISM) Program¹ which is an integrated programmatic approach to categorizing, prioritizing, selecting, and funding state barrier island maintenance projects, while continuing coordination with existing and future restoration mechanisms (). This is further discussed in detail in Section 6.5 of this status report and in Khalil, Raynie, and LeBlanc (2019).

Forty barrier island projects (including 13 in the Early Lafourche Delta System, 18 in the Late Lafourche Delta System, 9 in the Modern Delta System, and 2 in the St. Bernard Delta System and 4 under construction) have been constructed in Louisiana over the past two and a half decades (Table 1). Many of these projects are described below geographically from west to east, and are grouped by barrier island system.

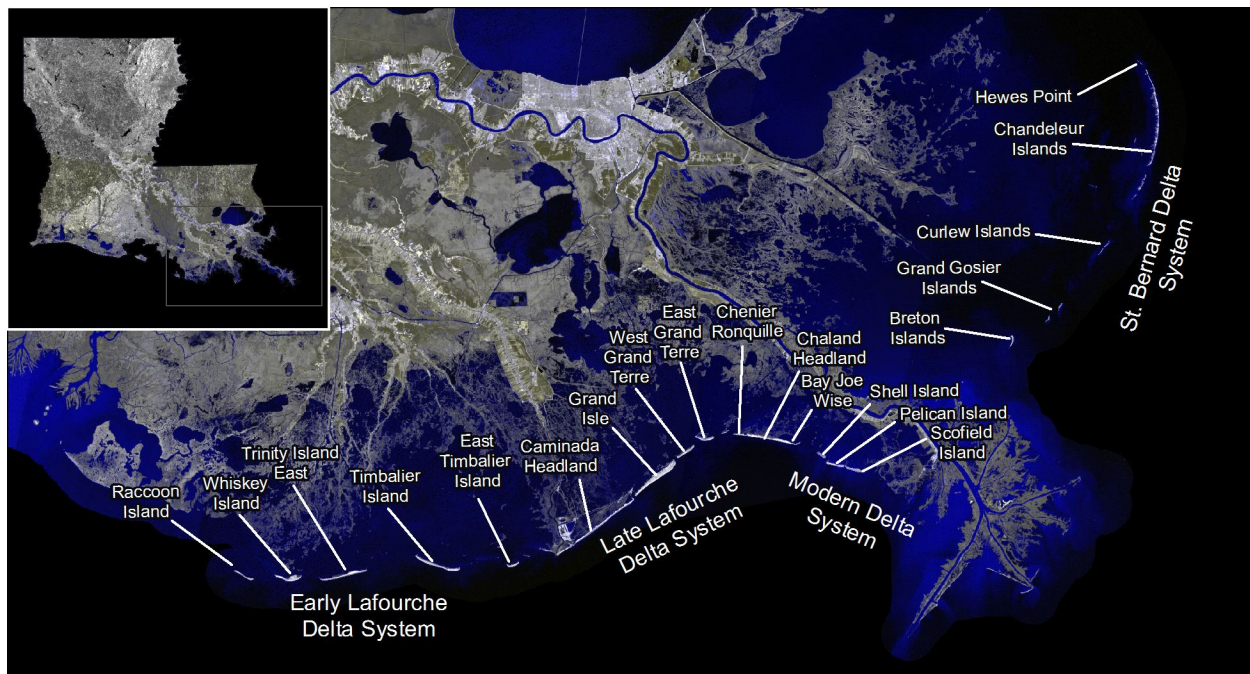


Figure 1: Location of barrier islands belonging to Early Lafourche, Late Lafourche, Modern, and St. Bernard barrier island systems in Louisiana

¹ Barrier Island Renourishment Program (BIRP) as reported during AP 2021 has been renamed as Barrier Island System Management (BISM) Program

Table 1. List of Constructed, Funded for Construction, and Future Barrier Island Projects in Louisiana

Barrier Shoreline Restoration Projects	Funding Program	Construction Year
Early Lafourche Barrier System		
<i>Constructed Projects</i>		
1 Racoon Island Repair (TE-0106)	Various	1994
2 Barrier Island Sand Retention (TE-0004b)	FEMA	1995
3 Racoon Island Breakwaters (TE-0029)	CWPPRA	1997
4 Racoon Island Shoreline Protection/ Marsh Creation (TE-0048)	CWPPRA	2007, 2013
5 Whiskey Island Restoration (TE-0027)	CWPPRA	1999
6 Whiskey Island Back Barrier Marsh Creation (TE-0050)	CWPPRA	2009
7 Enhancement of Barrier Island and Salt Marsh Vegetation DEMO (TE-0053)	CWPPRA	2012
8 Isles Dernieres Restoration Trinity Island (TE-0024)	CWPPRA	1999
9 New Cut Dune and Marsh Restoration (TE-0037)	CWPPRA	2007
10 Isles Dernieres Restoration East Island (TE-0020)	CWPPRA	1999
11 BIMP 2009 Sand Fencing (LA-0246)	STATE	2009
12 Wine Island Revegetation Project	FEMA	1995
13 NRDA Caillou Lake Headlands (TE-0100) (under construction) (includes Ship Shoal: Whiskey West Flank Restoration (TE-0047))	NRDA	2018
<i>Funded for Construction</i>		
None		
<i>Future Projects</i>		
None		
Barrier Shoreline Restoration Projects	Funding Program	Construction Year
Late Lafourche Barrier System		
<i>Constructed Projects</i>		
1 Barrier Island Sand Retention (TE-0004b)	FEMA	1995
2 Timbalier Island Planting Demonstration (TE-18)	CWPPRA	1996
3 Timbalier Island Dune and Marsh Creation (TE-40)	CWPPRA	2004
4 BIMP 2009 Sand Fencing (LA-0246)	STATE	2009
5 East Timbalier Island Sediment Restoration, Phase 1 (TE-25)	CWPPRA	2000
6 East Timbalier Island Sediment Restoration, Phase 2 (TE-30)	CWPPRA	2000
7 West Belle Pass Barrier Headland Restoration (TE-52)	CWPPRA	2012
8 Caminada Headland Beach and Dune Restoration (BA-45)	CIAP/ STATE	2015
9 Grand Isle Bay Side Breakwaters (BA-0187)	STATE	
10 Bayside Segmented Breakwaters at Grand Isle (BA-50)	CIAP	2012
11 Grand Isle - Fifi Island Restoration (BA-0155)	CIAP	2015
12 Grand Isle - Fifi Island Breakwater (BA-0168)	CIAP	2015
13 Grand Isle and Vicinity Hurricane Protection	WRDA	2010
14 East Grand Terre Island Restoration (BA-30)	CIAP	2011
15 Vegetative Planting of a Dredged Material Disposal Site on Grand Terre (BA-28)	CWPPRA	2001
16 Restoration on West Grand Terre Island at Fort Livingston (BA-0186)	NOAA	2003
17 East Grand Terre Island Restoration (BA-30)	CIAP	2010
18 Caminada Headland Beach and Dune Restoration, Increment 2 (BA-143)	NFWF	2016
<i>Funded for Construction</i>		
1 Terrebonne Basin Barrier Island and Beach Nourishment (TE-143)	NFWF	TBD
2 West Grand Terre Beach Nourishment and Stabilization Project (BA-0197)	NRDA	TBD
3 Caminada Back Barrier Marsh Creation (BA-0171)	CWPPRA	TBD
<i>Future Projects</i>		
None		
Barrier Shoreline Restoration Projects	Funding Program	Construction Year
Modern Barrier System		
<i>Constructed Projects</i>		
1 Pass La Mer to Chaland Pass (BA-38, part 1) also known as "Chaland Headland"	CWPPRA	2007
2 BIMP 2009 Sand Fencing (LA-0246)	STATE	2009
3 Pass Chaland to Grand Bayou Pass Barrier Shoreline Restoration (BA-35) also known as "Bay Joe Wise"	CWPPRA	2009
4 Barataria Barrier Island Complex Project: Pelican Island and Pass (BA-38, part 2)	CWPPRA	2012
5 Emergency Berms W8, W9, W10	Berm Funds	2010-2011
6 Riverine Sand Mining/Scofield Island Restoration (BA-40)	CWPPRA/ Berm Funds	2013
7 Shell Island Restoration East Berm (BA-110)	Berm Funds	2013
8 Chenier Ronquile Barrier Island Restoration (BA-76)	NRDA	2017
9 Shell Island Restoration West NRDA (BA-111)	NRDA	2017
<i>Funded for Construction</i>		
None		
<i>Future Projects</i>		
None		
Barrier Shoreline Restoration Projects	Funding Program	Construction Year
St. Bernard Delta System		
<i>Constructed Projects</i>		
1 Chandeleur Islands Marsh Restoration (PO-27)	CWPPRA	2001
2 Emergency Berms E4	Berm Funds	2010
<i>Funded for Construction</i>		
1 Louisiana Outer Coast Restoration: Breton Island (in design)	NRDA	TBD
<i>Future Projects</i>		
None		

2.1 Early Lafourche Delta System (Raccoon Island to Wine Island)

2.1.1 *Constructed Projects*

1. Raccoon Island Repair and Restoration Project (TE-106; State; 1994) – The goal of this project was to close breaches formed by Hurricane Andrew and restore the sandy beaches damaged during the storm. The goal was accomplished through the closure of 5 breaches, restoration and elevation of the beach, and construction of back barrier nodes (small sand islands) to provide additional habitat. Approximately 1.5 million cubic yards (MCY) of sand dredged from back barrier borrow sites was placed during restoration. Vegetation was planted to retain sediments and create appropriate habitats.
2. Raccoon Island Breakwaters Demonstration (TE-29; CWPPRA; 1997) – The goal of this project was to reduce shoreline erosion and increase subaerial land area. Eight segmented breakwaters were constructed along the eastern portion of the island to reduce the rate of shoreline retreat, promote sediment accretion along the beach, and protect seabird habitat. Project effectiveness was determined by monitoring changes in the shoreline, wave energy, and elevations along the beach, and by topographic and bathymetric surveys of the Gulf between the shoreline and the breakwaters.
3. Raccoon Island Shoreline Protection/ Marsh Creation (TE-48; CWPPRA; 2007, 2013) – The goal of this project was to protect the Raccoon Island rookery and seabird colonies from an receding shoreline by reducing the rate of erosion along the western end of the island and creating more land along the northern shoreline. This goal was accomplished through the construction of eight additional breakwaters west of the existing (TE-29) breakwaters and a terminal groin at the eastern end of the island (Phase A). In addition, mixed sediment from an offshore borrow area in federal waters was dredged to create 60 acres of back barrier marsh platform with an average elevation of 3.5 feet (Phase B). The shoreline protection (Phase A) component of this project was constructed in 2007; construction of the back barrier marsh platform component (Phase B) was completed in April 2013.
4. Whiskey Island Restoration (TE-27; CWPPRA; 1999) – The objective of this project was to create and restore sandy beaches and back barrier marsh platform on Whiskey Island. About 4.6 miles of the Gulfside sandy shoreline with beach/dune component of variable width (700-800 feet) was restored using about 2.9 MCY of sand. The dune height was 4 feet with crest width varying between 300-500 feet. The project created 523 acres of back barrier marsh platform and filled-in the breach at Coupe Nouvelle. The initial vegetation planting of smooth cordgrass (*Spartina alterniflora*) on the bayside shore was completed in July 1998 and additional vegetation seeding and planting was carried out in spring 2000.
5. Whiskey Island Back Barrier Marsh Creation (TE-50; CWPPRA; 2009) – The goal of the TE-50 project was to increase the longevity of the previously restored island by increasing the island's width which helped retain sand volume and elevation. Approximately 316 acres of back barrier intertidal marsh habitat, 5,800 linear feet of tidal creeks, three 1-acre tidal ponds and 13,000 linear feet of protective sand dune were created by semi-confined disposal and placement of dredged material. About 2.76 MCY of mixed sediment was dredged from an offshore borrow area in Gulf of Mexico near the island. After removal of the mixed sediment overburden, about 0.36 MCY of underlying sand was used to create the dune fronting the marsh platform. Native marsh vegetation was planted to colonize and protect the newly-placed marsh soil.

6. Isles Dernieres Restoration Trinity Island (TE-24; CWPPRA; 1999) – The project objectives included the restoration of the dunes and back barrier marshes of Trinity Island. Approximately 4.85 MCY of sand/sediment were dredged from a borrow area in Lake Pelto to build approximately 4.3 miles of 8-foot high dune with crest width of about 300 feet along with an elevated marsh platform at the bay side of the island. A total of about 353 acres of supratidal and intratidal habitats were created. About 22,500 feet of sand fences were installed in various orientations along with vegetative planting to stabilize the sand and minimize wind-driven transport.
7. New Cut Dune and Marsh Restoration Project (TE-37; CWPPRA; 2007) – The purpose of this project was to fill the breach between Trinity and East Islands through the creation of beach, dune, and marsh habitats in order to increase the structural integrity of eastern Isles Dernieres by restoring the sand transport within the littoral zone and adding sediment into the nearshore system. New Cut was closed through the construction of about 8,000 feet of dune platform (by placing approximately 0.85 MCY of sand dredged from an offshore borrow area) matching the dune elevations on the east and west, strengthening the connection between East and Trinity Islands. Nine species of native barrier island vegetation were planted and approximately 17,000 linear feet of sand fence was installed.
8. Isles Dernieres Restoration East Island (TE-20; CWPPRA; 1999) – The project restored the coastal dunes and wetlands of the Eastern Isles Dernieres. Approximately 3.9 MCY of sand were dredged from Lake Pelto to build about 353 acres of beach and dune with target elevations of 2 feet and 8 feet, respectively. The dune crest width ranges from 300 to 500 feet. Sand fences were installed and vegetation planted to stabilize the sand and minimize aeolian transport.
9. Enhancement of Barrier Island Vegetation Demonstration (TE-53; CWPPRA; 2010) – The goal of this project was to test several methodologies or products to enhance the establishment and growth of key barrier island and salt marsh vegetation. The project focused specifically on enhancing the establishment and growth of transplants of both dune vegetation (*Panicum amarum* and *Uniola paniculata*) and marsh vegetation (*Spartina alterniflora* and *Avicennia germinans*). Planting took place on Whiskey Island and New Cut in 2010, and monitoring of vegetation treatments was completed in 2011.
10. NRDA Caillou Lake Headlands Restoration Project (TE-100; NRDA; 2018) – This project includes the project area as envisaged by previous CWPPRA project entitled “Ship Shoal: Whiskey West Flank Restoration (TE-47)”. The design template of this project was slightly modified from the one that was suggested under the *Louisiana Coastal Area (LCA) - Terrebonne Basin Barrier Shoreline (TBBS) Restoration Project*, which includes the entire island footprint.

This project provides a barrier to reduce wave and tidal energy, thereby protecting the mainland shoreline from continued erosion. This was accomplished through the dredging/transport of 10.45 MCY of sand from Ship Shoal Block 88 to create and/or restore approximately 845.8 acres of subtidal, intertidal, supratidal, and dune habitats on Whiskey Island. Sediment was also placed on 107.8 acres that were below the -1.5-ft NAVD88 elevation, resulting in restoration of 953.6 acres in total. Beach and dune were constructed to elevations of +4.7 ft and +6.9 ft NAVD88, respectively. The combined beach and dune component was constructed to a minimum width of 880 ft with a maximum restored width of 1,340. The project was completed in July of 2018.

2.1.2 *Projects under Construction*
None

2.1.3 *Future Projects*
None.

2.2 Late Lafourche Delta System (Timbalier Island to East Grand Terre Island)

2.2.1 *Constructed Projects*

1. Timbalier Island Planting Demonstration (TE-18; CWPPRA; 1996) – For this project, sand fences were installed and vegetation suited to the salinity and habitat type of Timbalier Island were planted in several areas on the island to retain sand and buffer wind and wave energy.
2. Timbalier Island Dune and Marsh Creation (TE-40; CWPPRA; 2004) – Timbalier Island has been migrating rapidly to the west/northwest; therefore, the western portion of Timbalier Island is undergoing lateral migration by spit-building processes at the expense of erosion along the eastern portion. The objective of this project was to restore the eastern portion of Timbalier Island by restoring beach, dunes, and marsh. An 8-foot high dune with average crest width of about 400 feet was built using about 4.6 MCY of sand/sediment dredged from offshore borrow area which created a total fill area of about 273 acres, including about 196 acres of marsh platform.
3. East Timbalier Island Sediment Restoration, Phase 1 (TE-25; CWPPRA; 2000) – This project was to strengthen and thus increase the longevity of East Timbalier Island. The project included the placement of dredged sediment in three embayments along the landward shoreline of East Timbalier Island, along with aerial seeding of the dune platform, installation of about 13,000 linear feet of sand fencing, and dune vegetation plantings. About 2.8 MCY of sediment was dredged from an offshore borrow area to create a total of about 217 acres of supratidal and intratidal habitats which included a 5-foot high dune with crest width of about 200 feet and a 2-foot high and 500-foot wide marsh platform. This project was funded over two funding cycles of CWPPRA (PPL 3 and 4) during 1999 and 2000, respectively.
4. East Timbalier Island Sediment Restoration, Phase 2 (TE-30; CWPPRA; 2000) – The project goals and objectives were the same as that of Phase 1. While Phase 2 of the project along the western half of the island did not reconnect the western and eastern portions of the island, it did create 99% of the targeted acreage. It has helped to protect thousands of acres of existing fringing marsh to the north. Funds from this phase of the project were also used for 7,000 feet of rubble mound revetment constructed to protect the newly created habitats.
5. West Belle Pass Barrier Headland Restoration (TE-52; CWPPRA; 2012) – This project re-established the eroded West Belle Pass headland via dune and marsh creation and prevented increased erosion along the adjacent bay shoreline, protected the interior marshes and the Port Fourchon area. The project created a continuous headland approximately 10,660 feet in length, creating about 93 acres of dune habitat using nearly 1.74 MCY of dredged sand, and about 227 acres of marsh habitat using 3.05 MCY of dredged mixed sediment. Construction began in May 2011 and completed in 2012.
6. Caminada Headland Beach and Dune Restoration (BA-45; CIAP; Surplus; 2015) – Caminada Headland Beach and Dune Restoration project has restored and maintained the headland through the creation of dunes and beach habitat and will protect unique coastal habitats, re-established littoral sand transport to Grand Isle, and protect Port Fourchon and the only

hurricane evacuation route available to the region. This reach of the Barataria shoreline also supports the only land-based access to the barrier shoreline in the Deltaic Plain. Construction of portions of the Caminada Headland component of the LCA-BBBS Restoration Project template began in early 2013 using CIAP 2007 and Surplus 2008 funds. Approximately 3.6 MCY of sand from South Pelto Blocks 12 and 13 borrow area (eastern portion of Ship Shoal Complex) were placed to restore approximately 6 miles of shoreline by constructing a 7-foot high and about 290-foot wide dune and a 4.5-foot high and 65-foot wide beach restoring approximately 373 acres of habitat. It may be noted that it is the first time that sand from the Ship Shoal complex was dredged for coastal restoration purposes and was transported a distance of almost 22 miles. Also for the first time compactional subsidence could be quantified by measuring elevational changes in the various subsurface strata due to emplacement of sand during restoration by installing 10 monuments at three different stations. The details are mentioned later in this report under Caminada- Moreau Subsidence Study (CMSS) in Section 3 – Monitoring and Maintenance.

7. Caminada Headland Beach and Dune Restoration Increment II (BA-143, NFWF; 2016) – The second increment of the Caminada Headland restoration placed approximately 5.2 MCY of sand dredged from the South Pelto Block in Ship Shoal. A 7-foot high dune was constructed with a 290 foot width along with a 4.5-foot high and 65-foot wide beach over a project length of 39,000 linear feet, thereby restoring the headland on the similar design template as BA-45. Construction of this project started from the central portion of the headland, where the BA-45 project ended, and continued eastward towards Caminada Pass restoring approximately 686 acres of habitat. Construction of the project initiated in May of 2015 and the pumping of sand was complete in October of 2016. The project site was planted with native dune vegetation in the spring of 2017. Between the BA-45 and BA-143 projects, more than 8.8 MCY of sand from Ship Shoal was placed onto the headland, restoring over 13 miles and 1,059 acres of beach and dune habitat.
8. Bayside Segmented Breakwaters at Grand Isle (BA-50; CIAP; 2012) – The purpose of this project was to reduce erosion on the bay side of Grand Isle. Twenty-four 300 foot breakwaters (approximately 1.5 miles) were constructed on the back-bay side of Grand Isle. This project was constructed with Jefferson Parish CIAP funds in September 2012.
9. Vegetative Plantings of a Dredged Material Disposal Site on Grand Terre Island (BA-28; CWPPRA; 2001) – The goal of this project was to stabilize dredged material sites on West Grand Terre Island. This was achieved through vegetation plantings and by purchasing grazing rights on the island for the 20-year life of the project.
10. East Grand Terre Island Restoration (BA-30; CIAP; 2010) –This project stabilized and benefitted 1,575 acres of barrier island habitat and extended the island's life by filling breaches and tidal inlets along the shoreline, by emplacement of sand. About 621 acres of land were created by restoring 2.8 miles of barrier shoreline through construction of a 6-foot high dune along with 165 acres of beach habitat and construction of about 456 acres of marsh platform using about 3 MCY of sand and 1.6 MCY of mixed sediment from two offshore borrow areas. Although the CPRA constructed this projects using CIAP 2007 funds, this project was engineered, designed, permitted, and received the necessary land rights for construction, through the CWPPRA program, in partnership with the NOAA Fisheries.

2.2.2 Projects under Construction

1. Terrebonne Basin Barrier Island and Beach Nourishment (TE-143: NFWF) {Formerly East Timbalier (TE-118)} - This project is located in Terrebonne and Lafourche Parishes, Louisiana and is part of the Terrebonne Basin. It includes restoration areas on Trinity-East Island, Timbalier Island and West Belle Headland. A construction contract was awarded to Weeks Marine, Inc. in September 2019, and construction of the project will occur between October 2019 and November 2021. Three sand borrow areas located in federal waters approximately 10 nautical miles (nm) to the south of the restoration areas designated as the South Pelto Borrow Area and the Ship Shoal Borrow Area. One mixed sediment borrow area located in State waters approximately 3.0 nm south of West Belle Headland is designated as the West Belle Marsh Borrow Area. Pump-out areas and conveyance corridors connecting the marsh borrow areas and pump-out areas to the restoration areas are identified. Benefits of the restoration include protecting and sustaining significant and unique coastal habitats such as prime nesting habitat for numerous shorebird species. The restored barrier shoreline would reduce wave energy and salt-water intrusion from the Gulf of Mexico into back-barrier environments including marsh and mangrove wetlands. Additionally, the West Belle Headland protects critical infrastructure including Hwy 1 and Port Fourchon. The barrier system separates the Terrebonne and Timbalier Bay estuarine and freshwater marshes and forested wetlands from direct assault from the open waters of the Gulf of Mexico, allowing them to continue to function as productive nursery areas for numerous species of commercially and recreationally important fishes and invertebrates. This project will result in approximately 7 miles of beach restored and 1,100 acres of wetland habitat.
2. West Grand Terre Beach Nourishment and Stabilization Project (BA-0197: RESTORE) – The objectives of the West Grand Terre Beach Nourishment and Stabilization (BA-0197) project is to restore and enhance dune and back-barrier marsh habitat to provide storm surge and wave attenuation, thereby addressing the issues of gulf shoreline erosion, diminished storm surge protection, and subsidence of back barrier marshes. When constructed the project will consist of 14,000 feet of beach and dune with an area of approximately 251 acres, as well as the restoration of up to 160 acres of back barrier marsh and a rock revetment to protect the restored marsh. Located on the gulf side is a rock revetment spur and extension of the gulfside revetment to the shoreline. The project design goals are to increase the width of the island and maintain shoreline integrity through the introduction of sediment in order to increase island longevity. The Land Rights Investigation was completed in December 2018 and CPRA is continuing to obtain servitude agreements from landowners. The data collection and preliminary design phase was completed in late 2018 and Final Design was completed in August 2019. A bid package is anticipated to be available by April 2020 and construction is anticipated to begin either late summer or early fall 2020.
3. Caminada Headlands Back Barrier Marsh Creation Project (BA-171; CWPPRA) – This project will create 498 acres of back barrier intertidal marsh and nourish 430 acres of emergent marsh behind 3.5 miles of the Caminada Headland beach using material dredged from the Gulf of Mexico. The marsh creation and nourishment cells are designed to minimize impacts on existing marsh and mangroves. Assuming that there would be some natural recruitment, vegetative plantings are planned at one (1) year after project construction and three (3) years after project construction, if needed. Containment dikes will be degraded or gapped within three (3) years following construction completion to allow access for estuarine organisms. The

project will create a platform upon which the beach and dune can migrate, reducing the likelihood of breaching, increasing the retention of overwashed sediment, improving the longevity of the barrier shoreline, protecting wetlands and infrastructure to the north and west, and slowing the current trend of degradation on the headland. This project will work synergistically with the BA-0045 and BA-0143 Caminada Headland Beach and Dune Restoration Projects. This project is out to bid for construction.

4. Caminada Back Barrier Marsh Creation Increment 2 (BA-0193; CWPPRA): The U.S. Environmental Protection Agency (EPA) and the Coastal Protection and Restoration Authority (CPRA), as the Lead Agency and Local Sponsor respectively, have requested the initiation of formal deauthorization procedures for the Coastal Wetlands Planning, Protection and Restoration Act (CWPPRA) Caminada Headland Back Barrier Marsh Creation, Increment 2, (BA-193) Project. Because the benefit area associated with the BA-193 project was combined with the Caminada Headland Back Barrier Marsh Creation, Increment 1, (BA-171) project, the BA-193 project number is no longer needed.

2.2.3 Future Project

None

2.3 Modern Delta System (Chenier Ronquille to Scofield Island)

2.3.1 Constructed Projects

1. Barataria Barrier Island Complex Project: Pelican Island and Pass La Mer to Chaland Pass Restoration (BA-38; CWPPRA; 2007, 2012) –This project restored barrier island habitat, enhanced storm-related surge and wave protection, prevented overtopping during storms, and increased the volume of sand within the active barrier system. This project includes restoration of two barrier islands viz. the Chaland Headland portion of this project, which was constructed in 2007, and the Pelican Island segment, which began construction in May 2011 and was completed in 2012. Additionally in June 2010, the state began construction of a barrier berm in response to the *Deepwater Horizon* oil spill from Shell Island to Scofield Island west of the river to protect its coast from oilspill. The construction of the berm introduced a significant amount of sand into the barrier island system.
 - a. Pass La Mer to Chaland Pass Restoration (BA-38-1; CWPPRA; 2007) – A total fill area of 484 acres was created which included about 254 acres of back barrier marsh platform with an average elevation of 2.5 feet. Back barrier marsh platform was constructed using about 1.0 MCY of overburden mixed sediment from an offshore borrow area. About 2.4 MCY of sand were placed to build about 230 acres of beach-dune habitat with a dune height of 6 feet and crest width of 400 feet over a project length of 2.7 miles.
 - b. Pelican Island Restoration Project (BA-38-2; CWPPRA; 2012) – Pelican Island was restored using about 6.4 MCY of mixed sediment and sand from 4 different borrow areas in state and federal waters ranging in distance from 2 to 12 miles. About 2.1 MCY (in-place volume) of sand were utilized to create 192 acres of beach-dune habitats. Average dune elevation was about 7.5 feet extending to a length of 2.5 miles. About 398 acres of marsh platform, with an average elevation of about 2.6 feet, were constructed using 1.6 MCY of sediment. It may be noted that Emergency Berm W9 was built in front of this island using about 1.24 MCY of sand.

2. BIMP 2009 Sand Fencing (LA-0246; State, FEMA; 2009) - For this project, sand fences were installed on several previous project sites to trap sand and buffer wind and wave energy after overwash damages from Hurricanes Gustave and Ike impacted the Gulf of Mexico shoreline. A total of 37,200 linear ft of sand fencing were placed on Pass La Mer to Chalant Pass Restoration (BA-38-1), Timbalier Island Dune and Marsh Creation (TE-40), Isles Dernieres Restoration East Island (TE-20), New Cut Dune and Marsh Restoration Project (TE-37), and Isles Dernieres Restoration Trinity Island (TE-24).
3. Pass Chalant to Grand Bayou Pass Barrier Shoreline Restoration (BA-35; CWPPRA; 2009) – Also known as Bay Joe Wise, this project includes the emplacement of mixed sediment to create marsh along with tidal creeks and ponds, followed by vegetation plantings. The project's objectives were to: 1) prevent the breaching of the Bay Joe Wise shoreline by increasing barrier shoreline width; 2) increase back-barrier, emergent marsh area by approximately 220 acres to maintain the barrier shoreline; and 3) create emergent marsh suitable for tidal aquatic habitats. These features act as a buffer against wave and tidal energy, thereby protecting the mainland shoreline from breaching and continued erosion. About 350 acres of total fill area was created which included a marsh platform approximately 1,000 feet wide contiguous with the northern side of the gulf shoreline of Bay Joe Wise. The dune was built to an elevation of 6 feet with a dune crest width of about 110 feet. Approximately 3 MCY of sediment were dredged from the Pas la Mer Ebb-Tide Delta, Pass Chalant Ebb-Tide Delta, and Grand Pass Ebb-Tide Delta. The project also included the construction of approximately 10,000 feet of 4-foot wide, 2-foot deep tidal creeks or water exchange channels. In addition, immediate post-construction aerial seeding was conducted with Japanese millet (*Echinochloa frumentacea*) or brown top millet (*Panicum ramosum*) followed by smooth cordgrass (*Spartina alterniflora*) and black mangrove (*Avicennia germinans*) plantings.
4. Riverine Sand Mining/Scofield Island Restoration (BA-40; Berm Funds; 2013) – The goals of this project were to mitigate breaches and tidal inlets in the shoreline, reinforce the existing shoreline with sand, increase the width of the island with back barrier marsh to increase island longevity, and to re-establish a sandy dune along the length of the shoreline to protect the back barrier marsh platform from sea level rise and storm damage. The beach-dune habitats were constructed by the sand dredged from a borrow area in the Lower Mississippi River via a 22-mile long pipeline whereas the marsh platform was constructed from an offshore borrow source of mixed sediment. Although this project was designed under CWPPRA, construction began in December 2012 using Berm Funds. This created approximately 2.16 miles of beach and dune fill to close the breach areas and restore/protect the eroding beach. The dune component included a 50-foot wide crest width at +6 feet NAVD88. The beach fill template included a 100-foot wide construction berm at +4 feet NAVD88. The surface area of the beach platform was approximately 223 acres measured at +4 feet NAVD88. The required fill volume was approximately 2.03 MCY (required excavation (cut) volume was approximately 2.64 MCY). An approximately 2.23-mile long back barrier marsh platform on the bay side of Scofield Island was constructed. The surface area of the proposed marsh platform is approximately 375 acres with target marsh platform elevation of +3.0 feet NAVD88. The required fill volume was approximately 1.74 MCY (the required excavation (cut) volume is approximately 2.79 MCY). It may be noted that Emergency Berm W-10 was built in front of this island using about 0.964 MCY of sand.
5. Western Berm Reaches (West of Mississippi River along Shell, Pelican and Scofield Islands)

In response to the *Deepwater Horizon* oil spill which began on April 20, 2010, the State of Louisiana constructed approximately 16 miles of sand berms along several sections of the state's barrier islands both east and west of the Mississippi River. The objective of these projects was to provide a barrier to oil and minimize the potential impact of the oil spill to thousands of acres of fragile barrier islands and wetlands ecosystem in coastal Louisiana.

- a. Berm Reach W8 (Shell Island): The initial template of berm reach W8 was located within the footprint of the Shell Island restoration project which was proposed under the Barataria Basin Barrier Shoreline LCA project. However, pre-construction surveys indicated that the island had receded, so the profile was shifted approximately 750 feet north. The construction template for the W8 berm reach was identical to the templates used on the other berm reaches: a 20-foot crest width, +5 feet, NAVD 88 crest elevation, 1V:25H side slopes above -2.0 feet, NAVD88 and 1V:50H below -2.0 feet, NAVD 88. Construction of approximately 9,000 linear feet of berm on Shell Island started on October 9, 2010 and was completed by November 23, 2010. Approximately 0.777 MCY cubic yards of sand was placed along the island.
 - b. Berm Reach W9 (Pelican Island): Construction of berm reach W9 along Pelican Island started on July 18, 2010 and was completed by October 2, 2010. Sand was placed within the construction template, which was identical to the template used for the other berm reaches. The template was superimposed on the existing island and within the footprint of the proposed CWPPRA Pelican Island Restoration Project (BA-38-1). A total length of 12,700 feet of berm was constructed and approximately 1.3 MCY of sand was emplaced within the berm along Pelican Island.
 - c. Berm Reach W10 (Scofield Island): Construction of berm reach W10 on Scofield Island started on September 13, 2010. Approximately 0.935 MCY of sand was placed between September 13 and November 23, 2010 for constructing approximately 14,755 feet of berm. The construction template for berm reach W10 was identical to the other berm reaches. The berm was constructed within the footprint of the proposed CWPPRA Scofield Island Restoration Project (BA-40).
6. Shell Island Restoration – Shell Island is a critical component of the Barataria shoreline which has been breached into two islands – east and west. Restoration of these two islands was initially included in the LCA-BBBS Project. The Shell Island Restoration project would restore this barrier island through the creation of dune and marsh habitat. The overall goals of this project are to prevent intrusion of the Gulf of Mexico into interior bays and marshes, restore natural sand transport along this reach of the coast, and protect oil and gas facilities. This segment of the shoreline has been nearly lost. It may be noted that Emergency Berm Reach W8 was built using about 0.777 MCY of sand on the eastern portion of the Shell East island. This project has been split into two projects: Shell Island East-Berm (BA-110) and Shell Island West NRDA (BA-111). Shell Island East (Berm) has been constructed, whereas Shell Island West NRDA funded through the Louisiana Outer Coast Restoration project using NRDA Early Restoration Funds was built in 2017.
 7. Shell Island East Berm (BA-110) was constructed between April 2013 and August 2013. About 2.29 MCY of sand from a Lower Mississippi River Borrow Area (the same borrow area used for the Scofield Restoration Project [BA-40]) were utilized to construct an 8-foot NAVD 88 dune with a crest width of 340 feet between station 76+79 and station 144+00 creating a dune area of about 87 acres as well as a beach area of approximately 54 acres. About 136 acres

of marsh platform were constructed using about 0.286 MCY from the same borrow area as the dune sediment.

8. Chenier Ronquille Barrier Island Restoration (BA-76; NRDA;2017) – This project has expanded the Chenier Ronquille’s gulf shoreline structural integrity by tying into two recently constructed projects to the east and address one of the remaining reaches of the Barataria/Plaquemines shoreline. The design includes 20 years of advanced fill volume for the beach and dune template as well as fill for marsh creation/nourishment. Approximately 212 acres of beach/dune fill will be constructed, and approximately 306 acres of back barrier marsh platform will be constructed using sand/sediment from the borrow areas identified for earlier projects. Once restored, this island will provide vital habitat and help reconnect the barrier island chain that provides defense to inland communities. Dune plantings was conducted by seeding and installing approved nursery stock. Portions of the marsh platform was planted with cordgrass, and portions of the dune, swale, and marsh will be planted with appropriate species. This project is funded through the Louisiana Outer Coast Restoration project using NRDA Early Restoration Funds. Construction was contracted by the National Marine Fisheries Services and was completed in 2017.
9. Shell Island West (BA-111: NRDA;2017): The Shell Island West NRDA project encompasses the entire Shell West Island and the western portion of the Shell East Island that was not constructed under the Shell East Berm project (BA-110). The sand dredged from the Mississippi River was pumped approximately 19 miles. The Mississippi River borrow area was on the left descending bank; as such, the dredge pipe was laid across the bottom of the river to emerge on the right descending bank. From there, the pipeline crossed the Mississippi River levee, a hurricane protection levee, and two highways (Highway 11 and Highway 23), and then followed the Empire Waterway right-of-way to the eastern end of the project area. Four booster pumps were required to move the sand from the river to the project area. The template of this project includes 16,100 feet of shoreline with an 8-foot high and 340-foot wide dune on the western portion of the Shell East island, and a 380-foot wide dune on the Shell West island, creating an area of about 319 acres with 4.8 MCY of sand. About 285 acres of barrier marsh platform were constructed using about 1.1 MCY of mixed sediment from an offshore borrow area. Sand fencing has been installed along the length of the dune crest to aid in the retention of emplaced sand. Construction of the BA-111 project was completed in July 2017. The marsh and dune platforms was planted in Spring 2018. This project is funded through the Louisiana Outer Coast Restoration project using NRDA Early Restoration Funds.

2.3.2 *Projects under Construction*

None.

2.3.3 *Future Projects*

None.

2.4 St. Bernard Delta System

2.4.1 *Constructed Projects*

1. Chandeleur Islands Marsh Restoration (PO-27; CWPPRA; 2001) – This project was intended to accelerate the recovery period of barrier island areas overwashed by Hurricane Georges in 1998 through vegetation plantings. The overwash areas, which encompass 364 acres, are

located at 22 sites along the Chandeleur Sound side of the island chain and were planted with smooth cordgrass (*Spartina alterniflora*).

2. Eastern Berm Reach E4 (East of Mississippi River along Chandeleur Islands): In response to the *Deepwater Horizon* oil spill which began on April 20, 2010, the State of Louisiana constructed approximately 16 miles of sand berms along several sections of the state's barrier islands both east and west of the Mississippi River. The objective of this project was to provide a barrier to oil and minimize the potential impact of the oil spill to thousands of acres of fragile barrier islands and wetlands in coastal Louisiana. A total of 47,000 feet (8.9 miles) of berm were constructed along the Chandeleur Islands by about 5.85 MCY of sand dredged from Hewes Point in the north.

2.4.2 Projects under Construction

1. Louisiana Outer Coast Restoration Project: North Breton Island (NRDA) – Funded as an Early NRDA Restoration Project, the Louisiana Outer Coast Restoration project comprises four island segments including Breton Island. North Breton Island is the southern-most of a chain of barrier islands forming the Chandeleur Island and is part of the Breton National Wildlife Refuge. The goals of this project are to restore beach, dune, and back-barrier marsh habitats, as well as habitat for brown pelicans, terns, skimmers, and gulls to help compensate the public for spill-related injuries and losses to these resources. The restoration involves emplacement of compatible sediments to restore beach, dune, and back-barrier marshes; installation of sand fencing to trap and retain windblown sediments and foster dune development; and revegetation of appropriate native species in dune and back-barrier marsh habitat. The North Breton Island Project has completed final design and permitting and anticipates going to bid for construction in early 2019. The US Fish and Wildlife Service is the lead implementing agency for this project.

2.4.3 Future Projects

None.

3.0 Monitoring and Maintenance

Louisiana's barrier islands are part of a complex system controlled by many overlapping and interrelated processes. The four primary barrier island systems have been monitored and evaluated by recent efforts, such as the Barrier Island Comprehensive Monitoring (BICM) program (Section 3.2) and the monitoring of the Emergency Berms (Section 3.6). In addition to this monitoring, a very specific monitoring (with regional ramifications) for quantification of compactional subsidence caused by the emplacement of sand during restoration was undertaken under Caminada-Moreau Subsidence Study (CMSS; Section 3.3). Besides monitoring, the Barrier Island Maintenance Program (BIMP; Section 3.4) provides a framework for prioritizing planning, design, and construction of barrier island maintenance projects when needs are identified. These programs have provided information to the CPRA regarding the current condition and stability of Louisiana's barrier islands. To reduce the acceleration of island disintegration that commonly occurs after islands breach, a barrier island Breach Management Program was developed to address both breach prevention and response to breaches when they occur (Section 3.5). This

program is expected to improve the state's ability to repair storm-induced damages and extend the project-life and integrity of Louisiana's barrier shorelines. Finally, to ensure optimum, efficient and effective use of limited sediment resources within the borrow areas, a Borrow Area Monitoring and Maintenance (BAMM) project was undertaken to understand the evolution of the borrow pits (inland, riverine, and offshore) over time, especially the infilling characteristics (rate and types of sediment) and gradient of the pit-slopes (Section 3.7). BAMM is an integral component of Louisiana Sediment Management Plan (LASMP) which embraces a regional sediment management strategy upon which restoration projects are planned within a regional purview as opposed to merely a project-specific approach. All these monitoring efforts some of which are ongoing and some are completed fall under an overarching System-Wide Assessment and Monitoring Program (SWAMP).

3.1 System-Wide Assessment and Monitoring Program (SWAMP)

Given the need for coastal management programs to be able to adapt to not only the changing landscape, but ecosystem restoration priorities, allocation of project funding, and developments in new data gathering technology, an overarching monitoring and assessment program for Louisiana's coast is implemented as System-Wide Assessment and Monitoring Program (SWAMP). The first phase of SWAMP became operational for the Barataria Basin in the fall of 2015.

One of the first steps in the development of SWAMP was the formulation of a SWAMP Framework, completed in the fall of 2013 through various workshops with a long list of agencies and academic participants who were familiar with Louisiana's coast and its issues. This framework identified both natural and human drivers of change to our coastal system. Following this framework development, performance measures were identified and prioritized to support the state's coastal protection and restoration program. These performance measures were directly tied to the drivers of system change, such as atmospheric and oceanic processes, geological processes, surface and groundwater inputs, and ecosystem utilization, which represent the information that is necessary to monitor to document change and to document collective effectiveness of our Master Plan.

Following the Framework development and the identification of Performance Measures, a prototype SWAMP monitoring plan "Barataria Pilot" was developed for Barataria Basin which not only integrates existing monitoring programs, but also fills in data gaps and needs that were identified but were not currently being addressed by other programs in 2015.

The key design of SWAMP is to support a comprehensive network of coastal data collection activities to ensure effective development, implementation, and adaptive management of the coastal protection and restoration program. SWAMP now helps to tie in all of the supporting monitoring programs under one umbrella, such as the Coast-wide Reference Monitoring System-Wetlands (CRMS), the Barrier Island Comprehensive Monitoring (BICM) program, and the Louisiana Sand Resource Database (LASARD), to improve project efficiency and remove duplicative efforts. SWAMP has helped to integrate above/below ground biomass to assist wetland monitoring, added chlorophyll and nutrient components to help evaluate inshore water quality in the Mississippi Delta, enhanced fisheries monitoring protocols, and allowed for

improved bathymetry data to better understand the potential effects sediment diversions and help improve predictive ecosystem models.

SWAMP was implemented in Barataria Basin beginning in 2015 in Pontchartrain, Breton Sound, and the Mississippi River Delta in 2017. CPRA began working with The Water Institute of the Gulf in 2018 and completed the design of SWAMP for the remainder of the coast (from Bayou Lafourche to Sabine River) in late 2019. Monitoring of several parameters were initiated on the basis of experience gained during the earlier phases. Monitoring of remaining will be undertaken shortly for the remainder of the coast. One of the key areas for SWAMP's improvement will be the continued adaptation of standard operating procedures for the various monitoring and assessment programs throughout the coast. There are still numerous data sets received by CPRA which are not consistent with other data management programs. Improving data standards and accessibility will not only enable efficient data collection and utilization, but will also enhance data transparency across CPRA's programs and other coastal activities.

3.2 Barrier Island Comprehensive Monitoring (BICM) program

As detailed in earlier status reports (CPRA, 2017) BICM was developed and implemented to establish baseline conditions for the state's barrier shoreline after hurricanes Katrina and Rita, as well as to refine the methods and products for use in programs such as LCA; CWPPRA; CIAP; and BIMP.

The advantage of BICM over CWPPRA project-specific monitoring alone, is the ability to provide integrated long-term data on all of Louisiana's barrier shorelines, instead of only those areas with constructed projects. As a result, a greater amount of long-term data are now available to evaluate constructed projects, facilitate planning and design of future barrier island projects, assist operations and maintenance activities, and determine storm impacts. Because data were collected for the entire barrier island system concurrently, BICM datasets are more consistent and regionally encompassing than previous barrier island data collection efforts.

As reported earlier BICM datasets include 1) post-storm damage assessment photography and videography, 2) shoreline position, 3) land/water analysis, 4) topography, 5) bathymetry, 6) habitat composition, and 7) surficial sediment characteristics. Additionally, these datasets have been compared to historic datasets (where available) that have been standardized, thereby providing digital datasets to user groups for their use in multiple restoration efforts. Data collection for all seven BICM components initiated in 2005 was completed in 2008. Final datasets and reports are currently available through the CPRA web site. A final report entitled "Louisiana Barrier Island Comprehensive Monitoring (BICM) Program Summary Report: Data and Analyses 2006 through 2010: U.S. Geological Survey Open-File Report 2013-1083" was published as a USGS open file and can be accessed online via the CPRA website (coastal.LA.gov) or at <http://pubs.usgs.gov/of/2013/1083/> (Kindinger et al., 2013).

The current BICM data collection cycle (2015-2019) was initiated with region-wide collection of all variables beginning in 2015 (Figure 2). Additionally, BICM data management through CPRA Coastal Information Management System (<https://cims.coastal.louisiana.gov/outreach/Projects/Bicm>) is ongoing.

Shoreline Positions have been revised for the earlier BICM datasets, and development of additional shorelines for the 1950s, 2008, 2012, and 2015 have been completed (Figure 3). These data are available and provide updated shoreline erosion data, which better evaluates changes in shoreline positions, particularly in regards to various restoration efforts since 2006.

BICM collected bathymetry and sediment data in 2016 and 2017 within all BICM regions, with data currently available (Figure 4). Coordinated integration with SWAMP and BICM programs are continuing to contract USGS for topographic LiDAR surveys. LiDAR data were acquired from the Caminada Headland to Sandy Point in March, 2013 as part of a lower Barataria Basin LiDAR update through a partnership with USGS and the processed data was delivered by USGS in early 2015. BICM collaborated with USGS to survey the Early Lafourche Delta region in early 2015 and SWAMP coordinated a LiDAR survey of the Chenier Plain with USGS in early 2017 to complete the BICM area. These data are currently available. Coordination with SWAMP and BICM are now developing Topo-Bathy DEMs for three time periods, and develop operational sediment budgets for the Raccoon Island to Sandy Point areas and the Chandeleur Islands region.

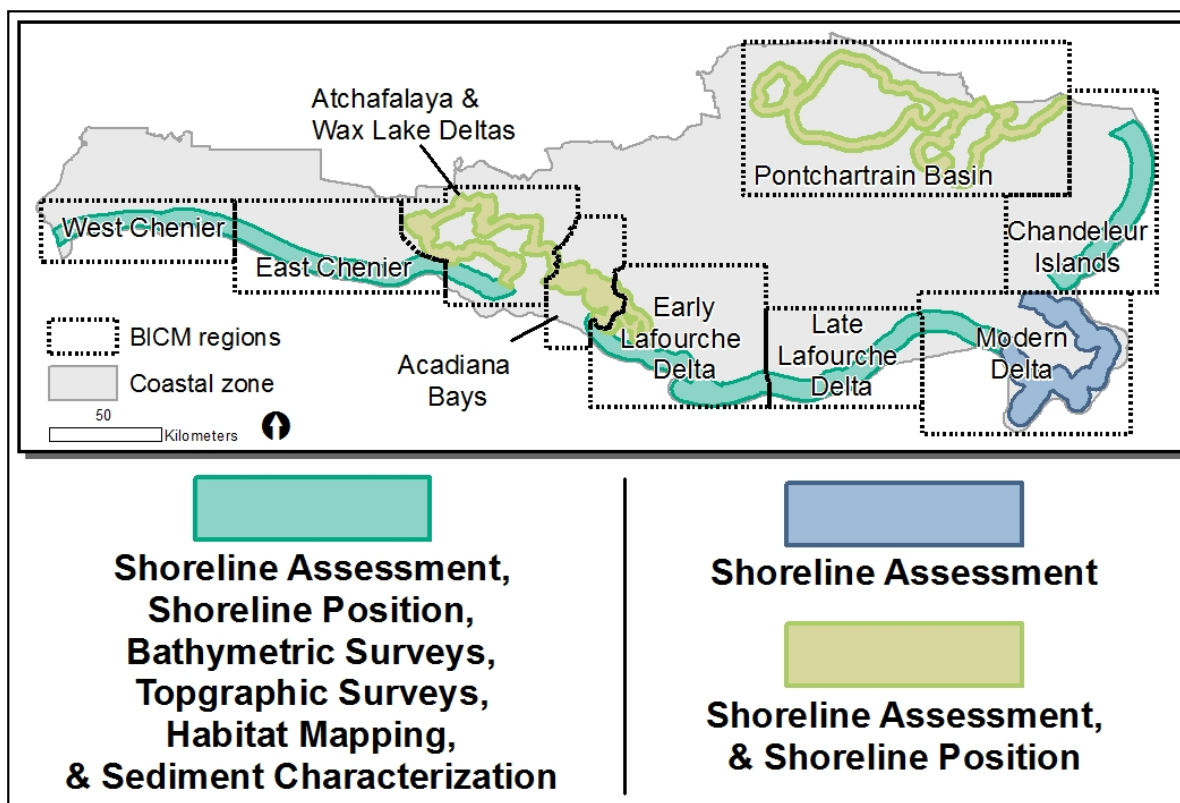


Figure 2: BICM data collection for the 2015 through 2019 cycle. Note the additional areas of effort in the Eastern Chenier Plain and Early Lafourche Delta regions compared to previous BICM collections.

Louisiana Shoreline Change: 1880s to 2015

Barrier Island Comprehensive Monitoring Program (BICM) - Phase 2

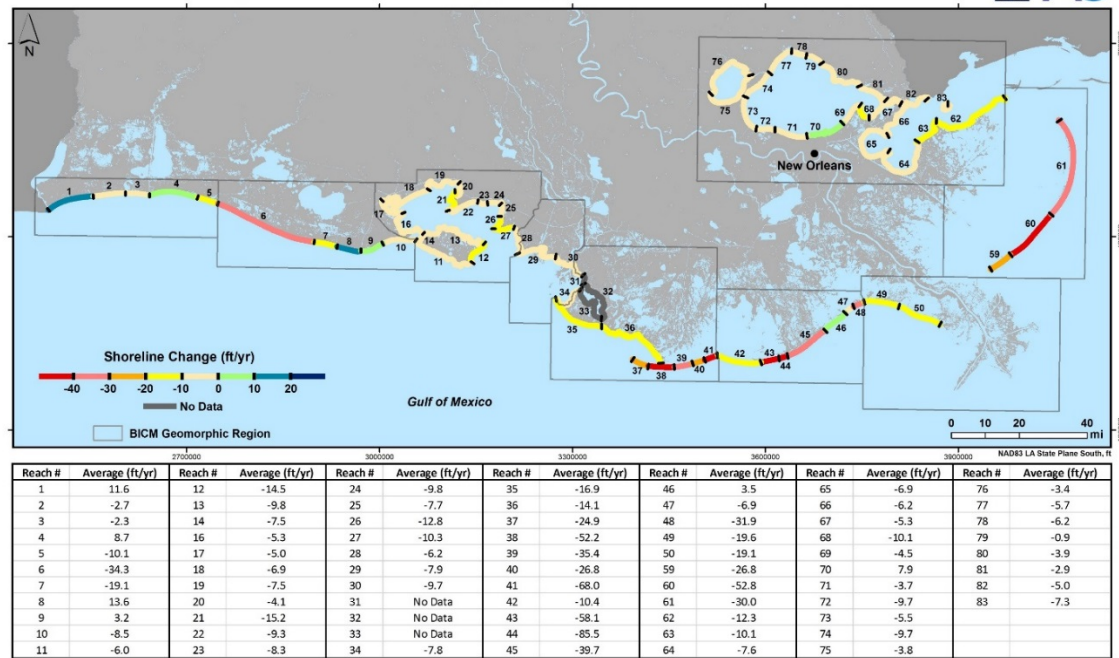


Figure 3. 1880's to 2015 average shoreline erosion rates for individual BICM shoreline reaches.

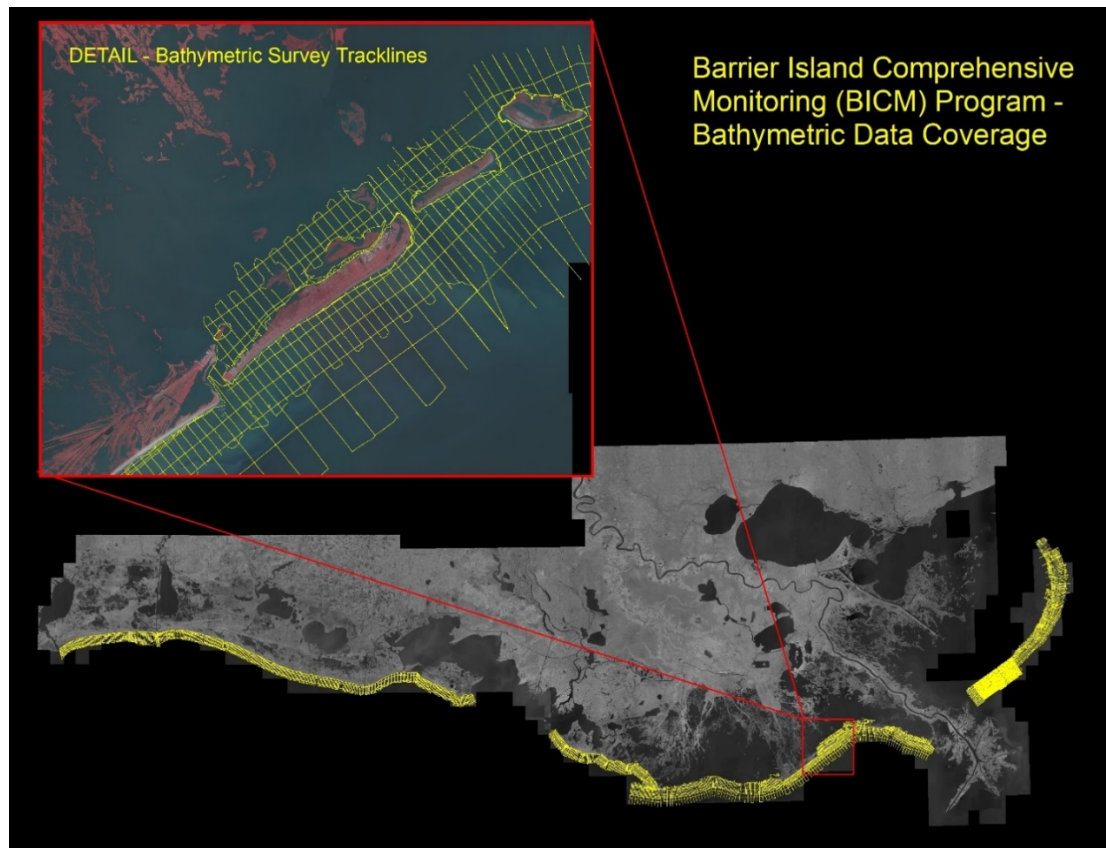


Figure 4. Bathymetric data collection coverage for the second BICM data collection cycle (2015-2017).

Habitat mapping, on the basis of the 2008 and 2015/16 coast-wide color infrared photography commenced in 2016, with data delivery and synthesis completed in 2019. Currently, habitat and habitat change data for all BICM regions is complete and available for use (Figure 5).

Surficial sediment sampling was repeated, and expanded into additional regions in 2015 and 2016. The samples have been collected, processed, and datasets are available. Analysis of changes in surficial characterizations are underway for final reporting. Additionally, shore assessment oblique photography has been collected and individual photos, photo pairs, and photo time series are available for use in reporting and outreach (Figure 6).

Additional data collections such as subsidence, overwash and recovery, and vegetation sampling are being developed and budgeted in coordination with SWAMP and CRMS programs, based on user input and needs identified for the 2017 Master Plan update, as well as storm damage assessments and other programs. Final Reporting is underway with final reporting completed by 2021.

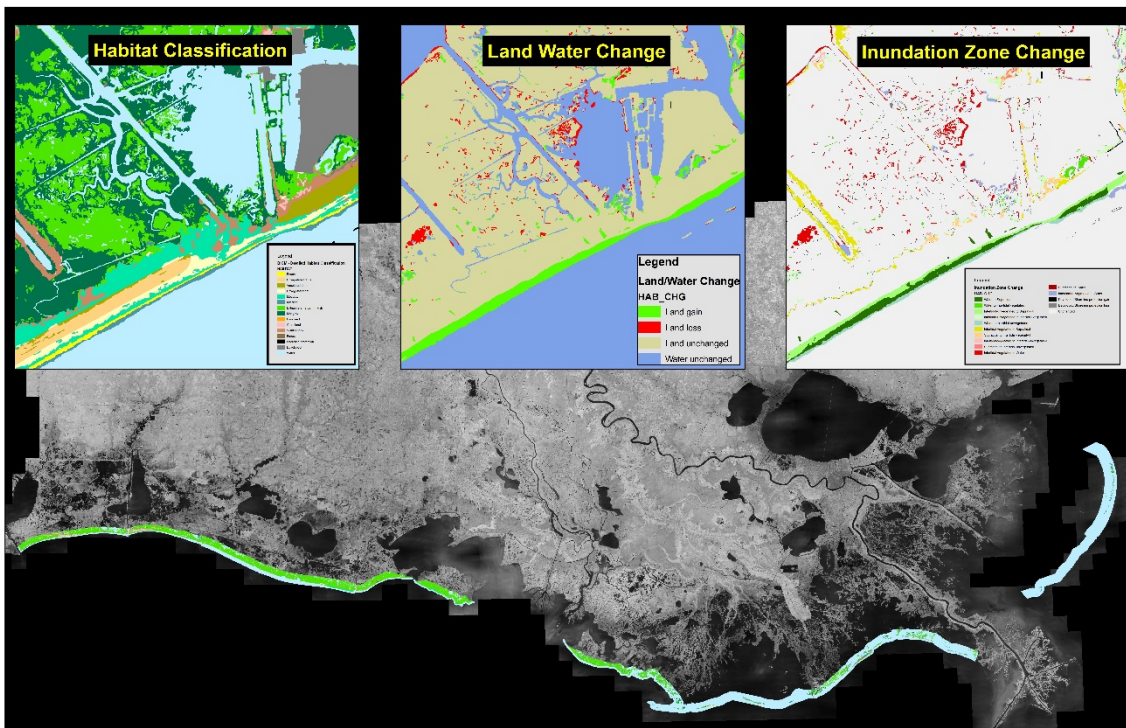


Figure 5 Habitat and Habitat change examples for BICM Regions.



Figure 6. Shoreline Assessment 2007 – 2017 photo pairs examples.

3.3 The Caminada – Moreau Subsidence Study (CMSS)

Marsh and barrier island restoration rely on placement of large quantities of sediment on existing substrate that often are compressible. At the same time, the emplaced sediment also compacts in time. Engineering design of restoration projects require knowledge of background subsidence rates, the relationship between surface loading and subsurface consolidation, and settlement of the fill after placement. The Caminada – Moreau Subsidence Study (CMSS) was conceptualized, planned, developed, and undertaken to evaluate the existing geological profile of deltaic deposits at foreshore, dune, and backshore locations along the Caminada Moreau headland, evaluate natural subsidence near the restoration site, and monitor consolidation settlement after placing sediment for restoration of Caminada Headland beach. This attempt to quantify consolidation settlement is a first-of-its-kind study as no direct measurements of subsidence and its partitioning with depth had been previously attempted (Byrnes et al., 2015).

This Three-Phased study was funded by CIAP and formed a part of the Performance Evaluation and Science Monitoring Project. A Phase 4 final report was submitted to CPRA in mid-2016, Phase 5 measurements were completed in February 2017. Fenstermaker & Associates completed a another sets of survey in April 2018 survey following the same procedures described in the Phase

4 final report by Gahagan & Bryant. A high-accuracy leveling survey was conducted for each 10 anchor locations relative to the control benchmark (CMS-BM-01) to an accuracy of ± 0.03 feet. Survey results documented continued consolidation settlement at all depths in the sediment column at all locations; however, the rate of change decreased as a function of depth and time after fill placement (Table 2). A general trend of decreasing consolidation settlement also is consistent with geotechnical estimates of consolidation.

A high-accuracy leveling survey similar to those conducted earlier for each 10 anchor locations relative to the control benchmark (CMS-BM-01) is planned early part of 2020.

Table 2. Elevation changes relative to CMS-BM-01 at Caminada Moreau Headland monuments (feet)

Elevation changes (in feet relative to CMS-BM-01) at Caminada Moreau Headland monuments, February 2013 to June 2018.											
Monument	Series 1 2/5/2013 2/13/2013	Series 2 3/31/2014 4/3/2014	Series 3 7/20/2015 7/23/2015	Series 4 2/9/2016 2/19/2016	Series 5 2/22/2017 2/25/2017	Series 6 4/16/2018 6/24/2018	Series 2 – Series 1	Series 3 – Series 2	Series 4 – Series 3	Series 5 – Series 4	Series 6 – Series 5
CMS-BM-01	4.56	4.554	4.521	4.498	4.491	4.472	-0.006	-0.033	-0.023	-0.007	-0.019
A-1	10.050	9.830	9.560	9.470	9.285	9.140	-0.220	-0.270	-0.090	-0.185	-0.145
A-2	9.890	9.810	9.670	9.610	9.478	9.382	-0.080	-0.140	-0.060	-0.132	-0.096
A-3	9.930	9.870	9.750	9.700	9.591	9.519	-0.060	-0.120	-0.050	-0.109	-0.072
A-4	na	na	na	na	na	6.191					
Settlement Plate 2	10.770	10.480	10.110	9.990	9.752	9.576	-0.290	-0.370	-0.120	-0.238	-0.176
B-1	9.970	9.700	9.290	9.160	8.915	8.726	-0.270	-0.410	-0.130	-0.245	-0.189
B-2	9.970	9.760	9.360	9.240	8.990	8.798	-0.210	-0.400	-0.120	-0.250	-0.192
B-3	10.000	9.920	9.780	9.720	9.600	9.512	-0.080	-0.140	-0.060	-0.120	-0.088
B-4	10.000	9.940	9.820	9.760	9.646	9.561	-0.060	-0.120	-0.060	-0.114	-0.085
Settlement Plate 3		11.970	11.480	11.360	11.131	10.953		-0.490	-0.120	-0.229	-0.178
C-1	9.750	9.680	9.310	9.190	8.940	8.751	-0.070	-0.370	-0.120	-0.250	-0.189
C-2	9.720	9.760	9.590	9.540	9.443	9.383	0.040	-0.170	-0.050	-0.097	-0.060
C-3	9.830	9.870	9.770	9.740	9.669	9.640	0.040	-0.100	-0.030	-0.071	-0.029
Settlement Plate 4					9.100	8.876					-0.224
Settlement Plate 5			13.270	13.050	12.717	12.450			-0.220	-0.333	-0.267

3.4 Barrier Island Maintenance Program (BIMP)

Several legislative programs have been established on both the state and federal levels that call for the implementation of a program to stabilize and preserve Louisiana's barrier islands and shorelines. House Bill No. 429, Act No. 407, authored by Representative Gordon Dove during the 2004 Regular Session, outlined the process by which the CPRA would annually develop a list of priority projects to be submitted to the House and Senate Committees on Natural Resources. These projects would be funded by the Barrier Island Stabilization and Preservation Fund, which was established by House Bill No. 1034, Act No. 786 of the 2004 Session to provide appropriations, donations, grants and other monies for the program. The legislation requires this fund to be used

exclusively by the CPRA to support the Barrier Island Stabilization and Preservation Program, with all interest earnings and unencumbered monies remaining in the fund at the end of the fiscal year.

In accordance with this legislation, and with the understanding that maintenance is an integral part of stabilization, preservation, and restoration of any barrier island or shoreline, BIMP was conceptualized by the CPRA. BIMP potentially provides the framework for categorizing, prioritizing, selecting, and funding state barrier island maintenance projects, while coordinating with CWPPRA and other existing restoration mechanisms. Previous efforts are described in past status reports and no new projects have been initiated under this program.

3.5 Breach Management Program

A Breach Management Program was developed to identify, classify, and prioritize methodologies and recommendations for breach prevention (proactive) and response (reactive) measures. A detailed analysis of coastal restoration projects completed in 2014 quantified the effects of breaching on barrier islands and headland beaches, specifically computing the significant increases in shoreline erosion rates. The Breach Management Program has developed a methodology to classify breach potential along the Louisiana coastline between Racoon Island to the west and Scofield Island to the east. Barrier islands classified as having the potential to breach within four years are classified as severe and breach prevention measures are being developed for those areas. Opportunities are being explored to strategically partner breach prevention measures with other barrier island projects scheduled in the near-term within the Coastal Master Plan or as Beneficial Use Projects for disposal of maintenance dredged sediments from federal navigation channels. Additionally, breach management provides a component of BIMP, and CPRA as noted previously, will continue to integrate breach management into comprehensive shoreline adaptive management.

3.6 Monitoring of the Emergency Berms

In response to the Deepwater Horizon oil spill which began on April 20, 2010, the State of Louisiana constructed approximately 16 miles of sand berms along several sections of the State's barrier islands both east and west of the Mississippi River. The objective was to provide a barrier to oil and minimize the potential impact of the oil spill to thousands of acres of fragile barrier islands and wetlands ecosystem in coastal Louisiana. It should be noted and appreciated that these berms are man-made features, were constructed for a specific purpose, and are different geomorphologically than native barrier islands. However, significant insights into coastal processes which affect barrier islands were gained by monitoring their changes over time. Details of these monitoring could be found in the following reports submitted to CPRA.

- (1) Chandeleur Island Emergency Berm: 360-Day Monitoring Report
- (2) Pelican Island Emergency Berm: 360-Day Monitoring Report
- (3) Scofield Island Emergency Berm: 360-Day Monitoring Report
- (4) Shell Island Emergency Berm: 360-Day Monitoring Report

Further the monitoring of the Emergency Berms has also been summarized in previous status reports (CPRA, 2016). No new monitoring has occurred. However, BICM data collection initiated during the summer of 2015 may provide an opportunity to continue to evaluate the fate of sediment

additions and the sediment pathways caused by the sand berms to the barrier shoreline in future reports.

3.7 Borrow Area Monitoring and Maintenance (BAMM)

To ensure the efficient and effective use of limited sediment resources in Louisiana, a Borrow Area Monitoring and Maintenance (BAMM) project was initiated and funded through CIAP as a part of the Performance Evaluation and Science Monitoring Project. The BAMM project provides information to understand the evolution of the borrow pits (inland, riverine, and offshore) over time, especially the infilling characteristics (rate and types of sediment), gradient and depth of the pit-slopes, and the potential development of hypoxic conditions. Also a numerical modeling effort was undertaken to analyze and evaluate potential adverse impacts to wave climate and hydrodynamics if large inland borrow areas are dredged to mine approximately 50 MCY of sediment since borrow areas of this size are being considered for Master Plan project implementation.

The goals of BAMM were to develop general guidelines for developing criteria for location, delineation, and design of potential borrow areas in inland, riverine and offshore environments for coastal restoration and protection projects in Louisiana. These guidelines were supposed to help ensure that borrow areas are designed in a cost effective manner with minimal adverse impact on the adjoining coastal system. This included review of potential dredge impacts, existing wave analysis work and other related studies. Geophysical, geotechnical, and water quality data were collected from several borrow areas in coastal Louisiana. The combined information gathered during these efforts was analyzed and used to provide recommendations on borrow area location, depth of dredging, and design. It may be added that BAMM is an integral component of Louisiana Sediment Management Plan (LASMP) and as such will aid in reinforcing a regional sediment management strategy upon which restoration projects are recommended to be planned within a regional purview as opposed to merely a project-specific approach.

Additionally many of the current marsh creation and restoration projects in Louisiana specify that fill material be obtained from borrow areas designed within interior lakes and bays. The use of “inland” borrow areas is governed by numerous restrictions and/or regulations. Most of these regulations focus on vertical and horizontal dredging limits. The impacts of these aspects of borrow area design on wave heights and energies and the surrounding marsh environment, as well as the potential for development of hypoxic conditions are not clearly understood. Therefore, the scientific basis of these restrictions and/or regulations needs to be investigated to determine whether these borrow area design constraints are justified.

The project as explained earlier was divided into five tasks that are discussed in the Final Report and in its associated appendices. During the various phases of this program, geophysical and geotechnical surveys were conducted at eight borrow areas. The maps created from this data collection were analyzed/processed to assist in the calculation of infilling rates of the borrow areas and general bathymetric changes in elevation. The Hypoxia Monitoring (Task 3) involved the deployment of gauges that measure dissolved oxygen, salinity and temperature in six borrow area locations. One gauge was placed within each selected borrow area and another was placed approximately 0.5 miles outside of the borrow area and acted as a control. The gauges were deployed for approximately four consecutive months (June-October) with data collection

occurring once a month. The gauges were collected for a final time in the last week of October 2013. In addition, inventories of existing borrow areas in coastal Louisiana, and their respective design characteristics, as well as past hypoxia studies have been provided. Two inland conceptual borrow areas were modeled to analyze and evaluate potential impacts to wave climate and hydrodynamics due to dredging of relatively large volumes (50 million cubic yards) of sediment. SWAN wave modeling and Delft3D flow and morphology modeling were conducted in Timbalier Bay, Terrebonne Bay, Lake Borgne and Lake Ponchartrain. The digital copy of the report and data are located in the CIMS Document Library at the following link: <http://cims.coastal.louisiana.gov/DocLibrary/FileDownload.aspx?Root=0&id=15062.4.0>

4.0 Barrier Island Performance Assessment

4.1 Overall Barrier Shoreline Condition

Louisiana's barrier shoreline is one of the fastest eroding shorelines in the world. Due to the geologic setting and the predicted changes in sea level during coming decades, these shoreline habitats and the services they provide are some of the most vulnerable features of our coastal landscape. The CPRA's BICM Program has been established to assess and report on the changes of the coastal shoreline to help develop programmatic approaches to restoration and maintenance. A study (CEC, 2012) was funded to look at barrier island performance during the five years since BICM data were collected. The result of this study was summarized in earlier status report (CPRA 2016).

A number of barrier island projects have been constructed in the Early Lafourche, Late Lafourche, and Modern delta reaches since 1994. With the adoption of the 2012 *Louisiana's Comprehensive Master Plan for a Sustainable Coast* (CPRA, 2012), and a revision in 2017, it is timely to consider the status of the already-accomplished restoration projects. In order to improve the understanding of barrier system evolution and enhance the science behind barrier system restoration design, it is both essential and prudent to evaluate performance of the constructed projects as completed in the recently-commissioned barrier island performance study (CEC, 2012).

The Barrier Island Status Report is a compilation of four "Technical Memos" along with "Implementation Strategies", evaluates the performance of restored barrier islands, and can be found in the CPRA document library at <http://cims.coastal.la.gov>, with the individual accessible via the following links:

[11050_CEC-Executive Summary-12-14-2012.pdf](#)

[11050 Tech Memo 1 Data Gap Analysis-12-13-2012-final.pdf](#)

[11050 Tech Memo 2 Future Monitoring-12-13-2012-final.pdf](#)

[11050 Tech Memo 3 BVA-12-13-2012-final.pdf](#)

[11050 Tech Memo 4 Performance Analysis-12-14-2012-final.pdf](#)

[11050- Tech Memo 4 Appendix A-Modern Delta.pdf](#)

[11050 Tech Memo 4 Appendix B Plaquemines.pdf](#)

[11050_CEC-Implementation Strategy-12-14-2012.pdf](#)

It is anticipated that BICM data collection initiated during summer 2015 will allow updates to previous status report assessments.

4.2 Benefits of Barrier Island Restoration on Longevity of System(s)

With several major restoration projects in place, the post-restoration estimated Year of Disappearance (YOD) for several barrier island systems in Louisiana have been extended by years to decades. This increase in island longevity throughout the system is a direct benefit of the restoration projects. Further, with the increase in both frequency and intensity of major hurricanes over the past 12 years (and similar projections into the future), in the absence of the restoration and protection program, it is expected many of these islands would have disappeared much sooner than original projections. Additional BICM data collection efforts will allow revisions of YOD rates and allow CPRA to prioritize future restoration efforts based on the status and trends of shoreline and project evolution.

5.0 Minimized Design Template

A “Minimized Design Template” was developed for utilization in modeling and analyzing future barrier island projects as component of the 2017 Coastal Master Plan (CEC, 2015). The minimized design template is defined as a design template with minimal barrier island dimensions that restores the barrier shoreline’s geomorphic form and ecologic function and retains this form and function after being subjected to the design storm events. There are several components needed to construct the minimized design template for a barrier system including bathymetric/topographic data, sediment transport pathways, design storm criteria, subsidence and compaction, existing restoration project footprints, and site constraints (e.g., unique environmental habitats).

A minimized design template was developed for the Terrebonne Basin barrier shorelines extending from East Timbalier Island to Raccoon Island as part of the Louisiana Coastal Area program for the Terrebonne Basin Barrier Shoreline Restoration Project (TBBSR) (USACE, 2010). The design storms selected included a hypothetical 50-year design storm and historic storms, Hurricanes Katrina and Rita, which occurred in 2005, and Hurricanes Gustav and Ike, which occurred in 2008. Table 3 presents dimensions of the minimized restoration template developed for the Terrebonne Basin islands.

Table 3. Summary of Minimized Restoration Templates for the Terrebonne Basin Barrier Shoreline Restoration Project (TBBSR).

Island	Raccoon	Whiskey	Trinity	East	Timbalier	East Timbalier
Gulf-side Beach Width (ft)	250	250	250	250	250	250
Dune Crest Width (ft)	100	100	100	100	100	100
Bay-side Beach Width (ft)	100	100	100	100	100	100
Marsh Width (ft)	1,000	1,000	1,000	1,000	1,000	1,000

Beach Elev. (ft, NAVD88)	4.2	4.0	4.0	4.0	4.0	4.0
Dune Elev. (ft, NAVD88)	6.4	6.2	6.2	6.2	6.2	6.2
Marsh Elev. (ft, NAVD88)	2.5	2.1	2.3	2.3	2.2	2.3

During 2015, system-wide barrier island and barrier headland restoration design templates were developed for Coastal Master Plan 2017. These templates achieve the goals of restoring the geomorphic and ecological form and function of the barrier shorelines through simulation of historical conditions by enlarging the existing barriers in width, elevation, and by reducing/eliminating the occurrence of breaching. Based upon the templates developed for previous projects (in Terrebonne and Barataria) along with the results of the sustainability analyses, an optimization process was undertaken to yield a system-wide restoration design template that could achieve the Study goal of providing habitat sustainability throughout the 50-year period of analysis while meeting the breach prevention criteria at TY50. The primary differences between the 2012 Master Plan template and the recommended templates developed for this Study include the addition of a constructed dune feature, increased widths of the beach berms, increased elevations for the marsh platforms, and include a terraced feature for the marsh (see Figure 6). All of these features have been added to reduce the potential for breaching and to accommodate island overwash with the objective of maximizing the retention of sediment in the back-barrier.

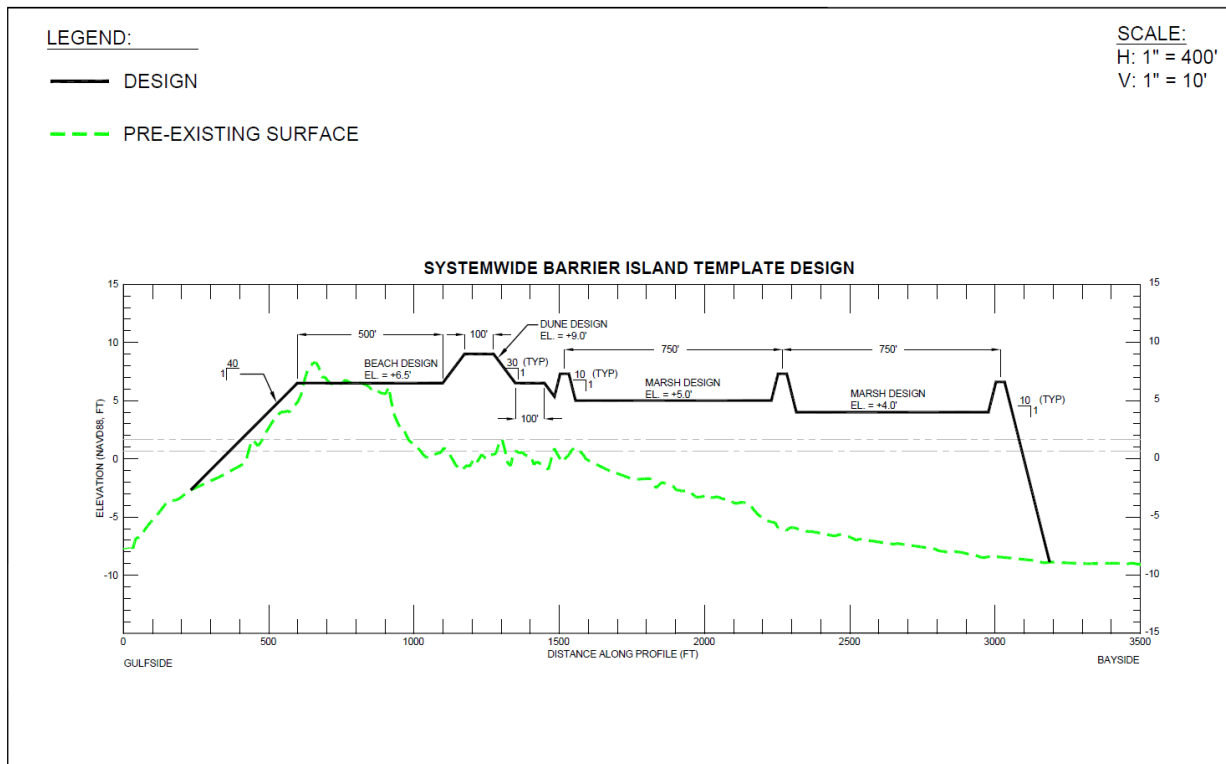


Figure 6. System-wide Barrier Island Design Template

In conjunction with the development of the barrier island design template, a barrier headland design template was also developed. Based upon the barrier island template designs and results of the sustainability analyses, an optimization process was undertaken to yield a system-wide barrier headland design template that achieved the objective of providing habitat sustainability throughout the 50-year period of analysis while meeting the breaching criteria at TY50 for a headland feature (Figure 7).

The final report along with the drawings of templates can be found in the CPRA document library at <http://cims.coastal.louisiana.gov/DocLibrary/FileDownload.aspx?Root=0&id=13277>.

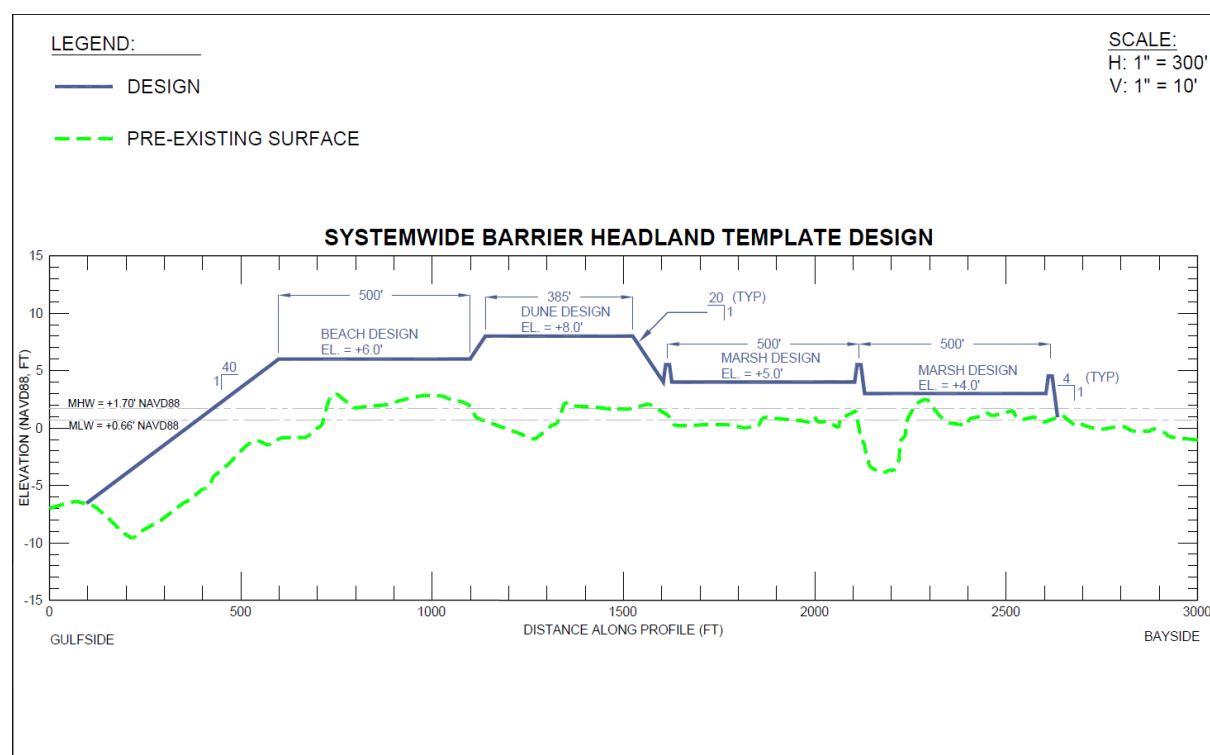


Figure 7. System-wide Barrier Headland Design Template

6.0 Current and Future Activities

Louisiana has invested hundreds of millions of dollars over the past two decades restoring its barrier islands and shorelines and intends to continue to invest in rebuilding and maintaining these features. Unlike the 2012 Coastal Master Plan, which called for restoration of specific barrier islands, the 2017 Coastal Master Plan recommends funding Louisiana's Barrier Island Renourishment Program, which CPRA is currently developing. Rather than recommending specific barrier island and shoreline projects and assigning them to a certain implementation period, CPRA intends to restore the Terrebonne, Timbalier, and Barataria barrier islands and shorelines as part of a regular rebuilding program. In addition, CPRA plans to continue system-wide monitoring, exploration and management of compatible sediment via acquisition of geotechnical and geophysical data, and improving overall understanding of sediment management

requirements to support the sediment needs and prioritization of the current 2017 Coastal Master Plan projects. This will allow monitoring and assessment of these critical features to drive project investment and for CPRA to be able to nimbly react when catastrophic events like future hurricanes impact these areas.

6.1 Louisiana Sand Resources Database (LASARD)

The Coastal Protection and Restoration Authority developed the Louisiana Sand Resources Database (LASARD) to archive, populate, and maintain the geoscientific and related data acquired for ecosystem restoration on a GIS platform. The objective of LASARD is to centralize relevant data from various sources for archival and better project coordination while avoiding any duplication. That will facilitate future planning for delineating and utilizing sediment resources for a sustainable ecosystem restoration in coastal Louisiana by streamlining access to existing data sources, which will minimize the cost and time required to identify appropriate resources. To keep pace with the large amount of data being delivered to the CPRA from ongoing projects, the current LASARD database has been updated to incorporate these new data sets. Keeping LASARD current facilitates the benefit of real cost savings to upcoming projects by not only providing valuable data for planning, but also by reducing the potential for costly, redundant data collection efforts. This includes finalizing updates to the LASARD attribute formats, updating existing data to match these new formats, and processing additional data sets that are generated by ongoing implementation of coastal restoration projects. The data which have been collected during BICM 1 and which will be collected in future studies will ultimately reside in LASARD. The LASARD database, along with the mapping of surficial sediment distribution, is an important component of the Louisiana Sediment Management Plan (LASMP).

6.2 Louisiana Sediment Management Plan (LASMP)

One of the metrics the State of Louisiana has chosen to track their progress is average rate of land change for the next 50 years. The goal is to change the trajectory of land loss from net loss to one of stability if not net gain. To ensure progress is being made, the state must depend upon sound environmental and fiscal management of sediment resources. As such, introduction of river sediment and freshwater nutrients to coastal marshes must be an integral component of restoration efforts, and sand deposits associated with ancient distributary channels and remnant shoals formed during the destructive phase of delta evolution should continue to be pursued as viable sources for barrier island and back-barrier marsh restoration. Moreover, sediment needs are likely to increase due to rapid subsidence in south Louisiana and potential increases in sea-level rise over the next century. Thus, the success of restoration efforts depends on locating, managing, and utilizing sediments in a cost-effective manner.

LASMP is a working model to incorporate the influence of scale on resource availability (river, in-shore, and continental shelf) and resource distribution for effective restoration. Although technical considerations associated with sediment borrow areas, river sediment, and engineering activities are critical for successful plan implementation, coastal policy/regulation requirements are expected to have significant influence on plan implementation.

The desired result of LASMP is a more cost-effective implementation of the Master Plan via comprehensive management of renewable and non-renewable sediment resources; a reduction in project costs and environmental impacts; and a long-term, safe and sustainable coast to protect Louisiana communities, national critical energy infrastructure, and state natural resources for future generations.

6.3 Operational Sediment Budget

An Operational Sediment Budget for the barrier island- shorelines of south Louisiana between Raccoon Point and Sandy Point has been undertaken to determine net littoral sediment transport rates for use with shoreline restoration planning and design, and for estimating project longevity. This effort is completed and the report is under review. The significance of sediment to the sustainability of coastal Louisiana and developing a sediment budget to promote effective utilization of sediment resources is a critical element for implementation and ultimate success of the State's Coastal Master Plan. One of the ways to quantify the volume of sediment necessary to counter the effects of relative sea level rise, to better assess long-term sediment movement trends within a coastal system, and to ensure cost effective and optimal use of sediments during restoration efforts is to quantify the regional sediment budget in and adjacent to proposed restoration areas.

Development of an operational sediment budget for coastal Louisiana will complement and support Louisiana's long-term Master Plan goals for wetland and barrier island creation, restoration, and protection by:

- Predicting project longevity, and developing timelines for future restoration needs (project planning perspective);
- Providing a regional accounting of sediment sources, sinks, and pathways, as well as engineering activities that benefit the planning, operations, and maintenance of restoration projects (operational planning tool);
- Creating fundamental information for coastal engineers and geologists to analyze and explain shoreline and bathymetric changes and to project future coastal response to wave climate and relative sea-level rise;
- Producing critical information for refining construction cost estimates and sediment resource quantities needed for planning Master Plan projects;
- Improving the State's ability to optimize use of sediment resources by taking advantage of natural long-term sediment movement trends to assist in the redistribution of sediment to project and adjacent project areas; and
- Expanding the State's ability to quantify sediment losses for FEMA claims and prepare for post-storm recovery projects.
- Addressing question associated with rock/breakwater placement regarding impact of these structures upon the local sediment budget (i.e., the immediate barrier island shoreline and adjacent down-drift shorelines)

6.4 Barrier Island System Management (BISM) Program

The 2017 revision of Louisiana's Comprehensive Master Plan recommends a Barrier Island Sediment Management (BISM) Program to meet the need for ongoing maintenance of the state's

barrier island systems, many of which have been partially restored in recent years through several funding mechanisms including recovery efforts from the Deepwater Horizon Oil spill. The proposed BISM program {formerly Barrier Island Renourishment Program (BIRP)} brings together several previous efforts led by CPRA, including BICM, LASMP, LASARD, and the Breach Management Program. BISM reflects an integrated, holistic approach to categorizing, prioritizing, selecting, and funding state barrier island maintenance projects while continuing coordination with existing and future restoration mechanisms (Khalil, Raynie, and LeBlanc, 2019).

The effort, which kicked off in September of 2019, is a three-phased approach that focuses on formalizing a structured decision making (SDM) process whereby CPRA can prioritize and implement future projects based on science while maintaining the ability to respond to unexpected coastal changes. CPRA has developed roles and responsibilities for the team and has started a series of workshops to review prior projects, identify problems, and establish goals and objectives. Throughout this process, the program continues to focus on the implementation of CPRA adaptive management processes necessary to adaptively manage BISM through time and coordinate with the development of the 2023 Master Plan. In addition to these workshops, BISM is performing an inventory of data and model outputs in the state of Louisiana that may be incorporated into BISM. This process will summarize potential data resources for the development of the model toolkit and help determine a path forward for implementation of LASMP to map individual sand resources to shoreline regions such that sediment availability is included in the BISM decision process. The BISM process will ultimately provide both a list of priority projects for future implementation, upcoming implementation efforts for the LASMP and BICM programs, and funding needs for all aspects of upcoming barrier shoreline efforts. The effort will continue to have workshops throughout 2020 and start to engage from different local, state, and federal agencies to create synergy and buy-in from stakeholders.

6.5 Louisiana Sediment Availability and Allocation Program (LASAAP)

In order to implement LASMP efficiently and cost effectively CPRA has developed “Louisiana Sediment Availability and Allocation Program (LASAAP)” as a pilot project. LASAAP is expected to help implement BISM. The tool’s primary goal is to link the sediment-needs for the State’s marsh, barrier island and ridge creation/restoration projects to the coast-wide potential sediment sources within state and federal waters. This tool analyzes dredge/borrow area and construction/project locations along with existing sediment resource development data in a spatial format in order to efficiently and cost effectively manage limited compatible sediment resources. The long-term goal for these tools is to enhance State planning capabilities to optimize sediment resource utilization, capitalize on synergistic project opportunities, reduce project costs, maximize land-building potential, and ensure projects have the necessary sediment available for 50-yr planning horizon of the CMP.

To test the tool’s effectiveness and functionality, a pilot study was conducted in Barataria Basin. Eleven CMP restoration projects fall within the Barataria Basin. Three of these projects are marsh creation projects and one is a comprehensive barrier island restoration project. These four projects were broken down into their individual barrier island or marsh components and each was evaluated using the tool to identify potential sand and/or mixed sediment resources.

Based on the outcome of the pilot study, there are several recommendations to improve the overall the tool and make it more accessible to a wider audience. It is important to note that the purpose of this phase was to develop a conceptual model and beta version of the tool. Depending on available funding, future phases may include tool modifications and improvements.

7.0 References

- Byrnes, M. R., Hedderman, C., Hasen, M., Roberts, H., Khalil, S., and Underwood S. G., 2015. Differential sediment consolidation associated with barrier beach restoration: Caminada headland, south Louisiana. Proceedings of Coastal Sediments 2015. World Scientific Publishing Company
- Campbell, T., Benedet, L. and Finkl, C. W. 2005. Regional strategies for barrier island restoration. In: Finkl, C.W. and S. M. Khalil, (eds.), *Louisiana Barrier Island Restoration*. West Palm Beach, Florida: *Journal of Coastal Research*, Special Issue No. 44, 240–262.
- Coastal Engineering Consultants, Inc. 2012. Barrier Island Performance Analysis. Prepared for Coastal Protection and Restoration Authority under contract 2503-12-22. <http://cims.coastal.la.gov>
- Coastal Engineering Consultants, Inc. 2015. Barrier Island / Barrier Headland Restoration, Design Template Development, Technical Memorandum, CEC File No. 13.084. <http://cims.coastal.la.gov>
- CPRA (Coastal Protection and Restoration Authority). 2017. Louisiana’s Comprehensive Master Plan for a Sustainable Coast. Baton Rouge, LA.
- CPRA (Coastal Protection and Restoration Authority) 2016. Integrated Ecosystem Restoration & Hurricane Protection in Coastal Louisiana: Fiscal Year 2016 Annual Plan. Baton Rouge, LA. <http://cims.coastal.louisiana.gov/DocLibrary/FileDownload.aspx?Root=0&id=11477>
- CPRA (Coastal Protection and Restoration Authority). 2012. Louisiana’s Comprehensive Master Plan for a Sustainable Coast. Baton Rouge, LA.
- Ewing, L. and Pope, J. 2006. Viewing the Beach as an Ecosystem? *Shore & Beach*, 74 (1), 2.
- Georgiou, I.Y., Fitzgerald, D.M., and Stone, G.W. 2005. The impact of physical processes along the Louisiana coast, *Journal of Coastal Research*, Special Issue No. 44, pp. 72-89.
- Khalil, S.M. and C.W. Finkl. 2009 Regional sediment management strategies for coastal restoration in Louisiana, USA. *Journal of Coastal Research*, Special Issue No. 56, pp. 1320-1324.
- Khalil, S.M., Finkl, C.W., Roberts, H.H., and Raynie, R.C. 2010. New approaches to sediment management on the inner continental shelf offshore coastal Louisiana, *Journal of Coastal Research*, 26 (4), 591-604.
- Khalil, S.M., and Raynie, R.C., 2015. An integrated system-based approach to restoration of Louisiana’s barrier islands. Proceedings of Coastal Sediments 2015. World Scientific Publishing Company

- Khalil, S.M., Raynie, R.C., and LeBlanc, J. 2019. Louisiana's Barrier Island System – A Programmatic Approach to Restoration. Proceedings of Coastal Sediments 2019. World Scientific Publishing Company
- Kindinger, J.L., Buster, N.A., Flocks, J.G., Bernier, J.C., and Kulp, M.A., 2013, Louisiana Barrier Island Comprehensive Monitoring (BICM) Program Summary Report: Data and Analyses 2006 through 2010: U.S. Geological Survey Open-File Report 2013–1083, 86 p., at <http://pubs.usgs.gov/of/2013/1083/>.
- McBride, R.A. and M.R Byrnes. 1997. Regional variations in shore response along barrier island systems of the Mississippi River delta plain: historical change and future prediction. *Journal of Coastal Research* 13(3):628-655.
- Rosati, J. D. 2009. Barrier Island Migration Over a Consolidating Substrate. Coastal Inlets Research Program, U.S. Army Engineer Research and Development Center, Coastal and Hydraulics Laboratory. ERDC/CHL TR-09-8. Vicksburg, MS. 219 pp.
- U.S. Army Corps of Engineers. 2010. Louisiana Coastal Area Ecosystem Restoration Study. Vol. V of VI. Integrated Feasibility Study and Final Environmental Impact Statement for the Terrebonne Basin Barrier Shoreline Restoration, Terrebonne Parish, Louisiana. New Orleans, Louisiana.