

West Shore-Lake Pontchartrain



Location

The West Shore-Lake Pontchartrain project calls for the construction of 17.5 miles of earthen levee and one mile of T-wall from the Mississippi River in Garyville to the Bonnet Carre spillway outside of LaPlace.

Project Overview

The recommended plan provides hurricane and storm-damage risk reduction through the use of structural measures in St. Charles and St. John the Baptist Parishes. This system will consist of approximately 18 miles of earthen levees and floodwalls, four floodgates, two drainage structures and four pump stations along the alignment. Additionally, an earthen berm, as well as non-structural protection measures will be included for communities in St. James Parish.

Issues Addressed

Communities on the west shore of Lake Pontchartrain are at increasing risk to tropical storm surge flooding due to wetland loss and relative sea level rise. The area is currently without storm levees and remains susceptible to damages from tropical storm surges. Some natural buffer protection is afforded by the Maurepas Swamp that separates developed areas from nearby tidal lakes, but the swamp has degraded over time and the buffer it provides between the lakes and towns is decreasing (see [PO-0029](#) for more information on the freshwater diversion project in this area). Meanwhile, population is increasing with suburban and industrial development along the river corridor between Baton Rouge and New Orleans.



Project Information

Project Type(s):

Structural Protection

Project ID:

PO-0062

Basin:

Ponchartrain

Funding Program(s):

HSDRRS

Project Phase:

Planning

Parish(es):

St. Charles, St. John the Baptist, St. James

Estimated Cost:

\$760 million

Project Benefits



Risk Reduction:

- 235,581 acres protected



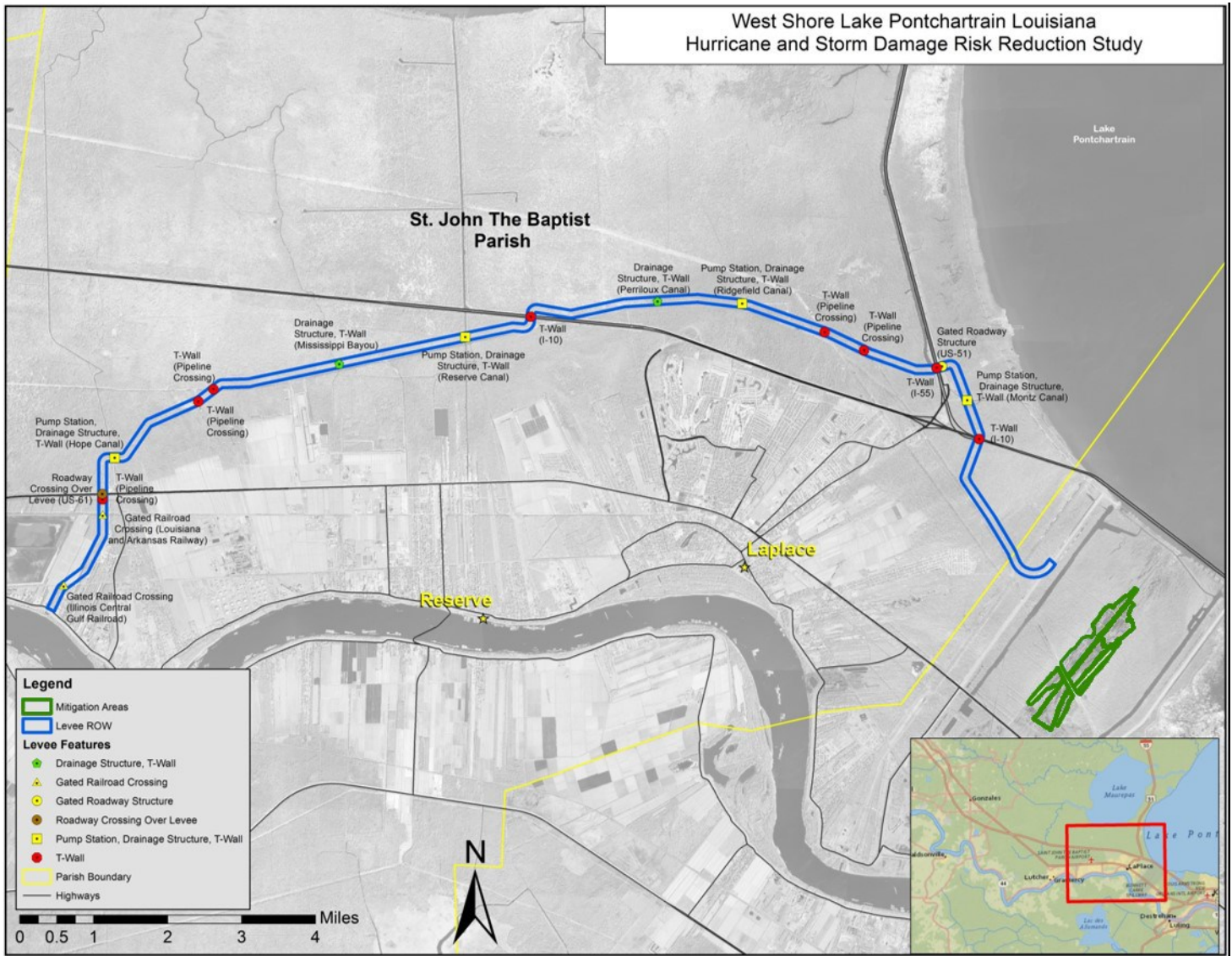
coastal.la.gov

Project Benefits

The project will benefit the vulnerable communities and towns of Montz, Laplace, Reserve, Lutchter, Gramercy, Grand Point, Convent, Garyville and Romeville by protecting them from tropical storm surges from Lake Pontchartrain and Lake Maurepas.

Project Images

The proposed levee construction is seen below in blue. Other project features are not pictured on this map, including an earthen berm and several non-structural protection measures in St. James Parish just west of what is shown on this map.



CONNECT WITH US!



@LouisianaCPRA