



FISCAL YEAR 2021 ANNUAL PLAN

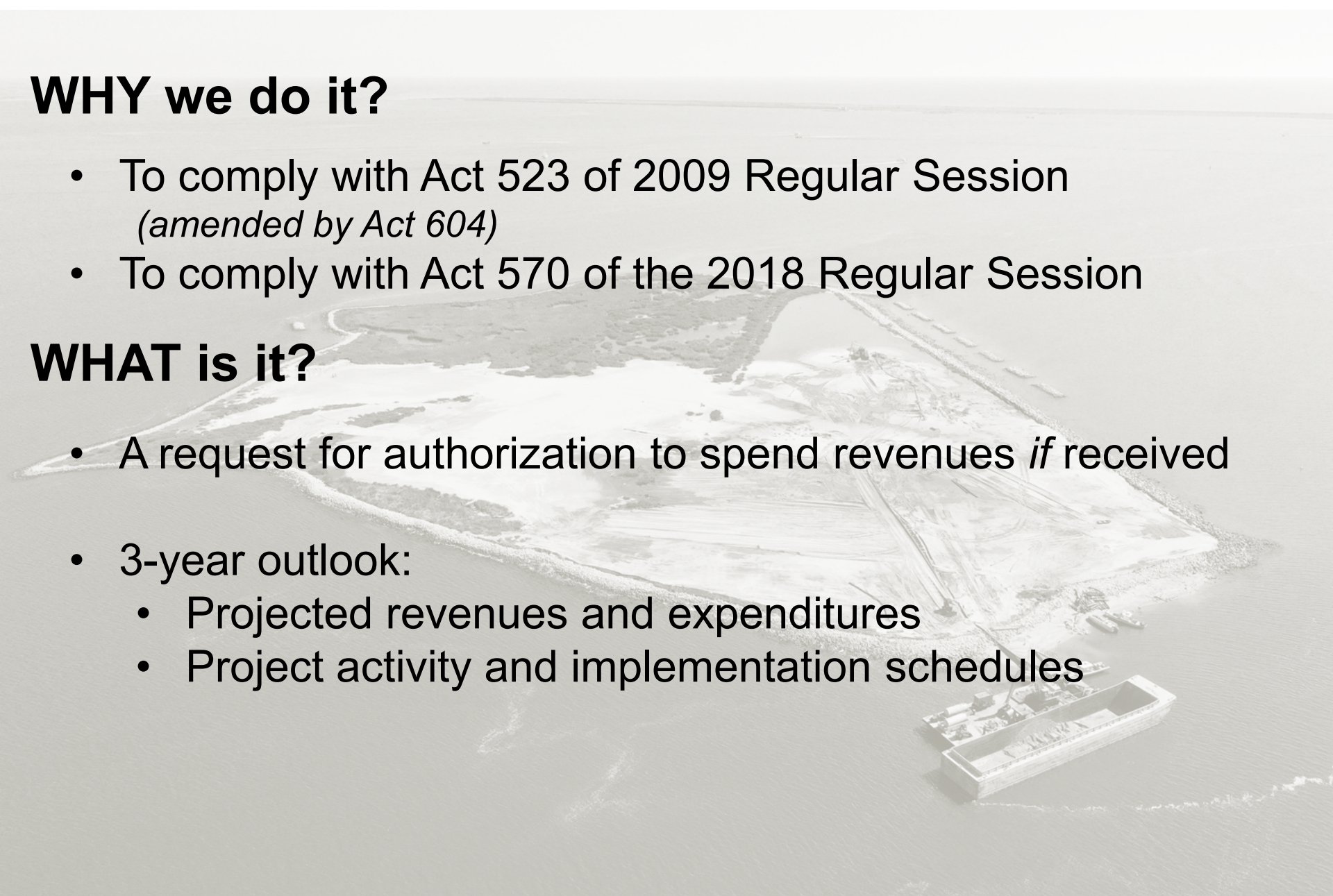
INTEGRATED ECOSYSTEM RESTORATION AND HURRICANE
PROTECTION IN COASTAL LOUISIANA

WHY we do it?

- To comply with Act 523 of 2009 Regular Session
(*amended by Act 604*)
- To comply with Act 570 of the 2018 Regular Session

WHAT is it?

- A request for authorization to spend revenues *if* received
- 3-year outlook:
 - Projected revenues and expenditures
 - Project activity and implementation schedules



What's the Process?

Draft Annual Plan Presented to CPRA Board

CPRA Annual Plan Public Hearings:

- January 6, New Orleans
- January 7, Houma
- January 8, Lake Charles

Atchafalaya Basin Annual Plan Public Hearing

- January 14, Bayou Sorrel
- January 16, Henderson

Final Annual Plan Presented to CPRA Board

- **March 18**

Submit to Legislature, March Session

**Public
Comment
Period
December 18 –
February 22**

FY 2021 Annual Plan



New Orleans (Jan. 6, 2020) - Houma (Jan. 7, 2020) Lake Charles (Jan. 8, 2020)

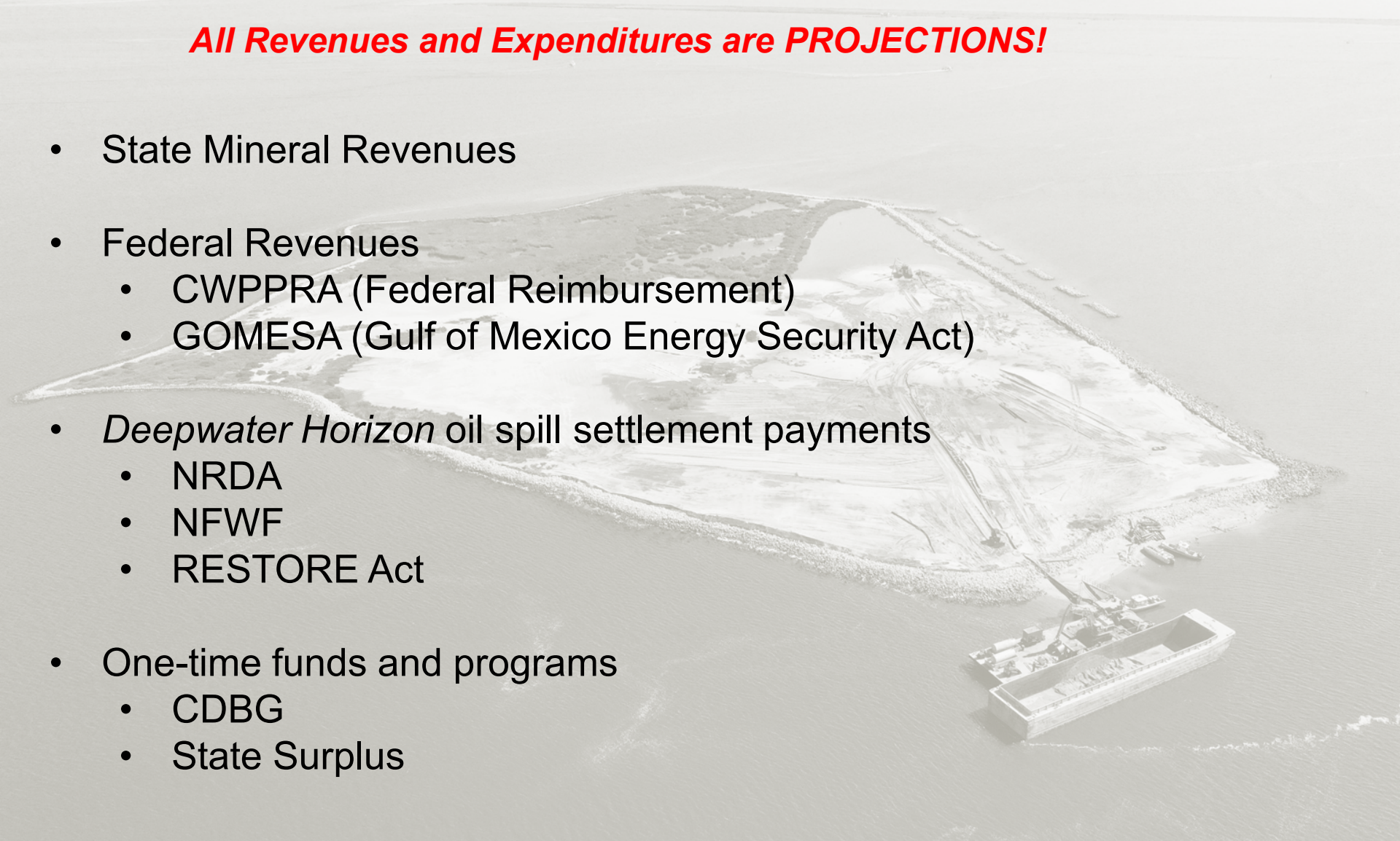


Bayou Sorrel (Jan. 14, 2020) - Henderson (Jan. 16, 2020)

Our Funding – How it Works

All Revenues and Expenditures are PROJECTIONS!

- State Mineral Revenues
- Federal Revenues
 - CWPPRA (Federal Reimbursement)
 - GOMESA (Gulf of Mexico Energy Security Act)
- *Deepwater Horizon* oil spill settlement payments
 - NRDA
 - NFWF
 - RESTORE Act
- One-time funds and programs
 - CDBG
 - State Surplus



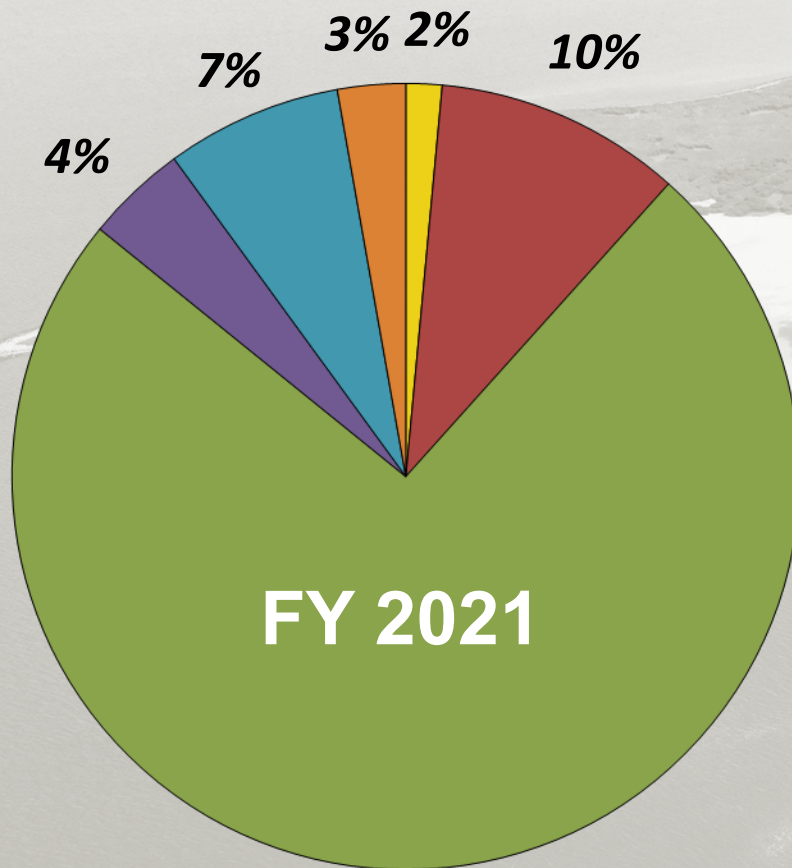
TOTAL Projected Revenues & Expenditures FY21

By Funding Program

Program	Revenue Projections	Expenditure Projections
GOMESA	\$143,973,910	\$143,973,910
NRDA	\$319,599,061	\$319,599,061
NFWF	\$168,587,674	\$168,587,674
RESTORE	\$70,763,000	\$70,763,000
CWPPRA (Federal)	\$92,771,547	\$92,771,547
Other	\$225,258,875	\$225,258,875
State (Non-Surplus)	\$61,917,927	\$61,917,927

TOTAL Projected Expenditures FY21

By Project Phase

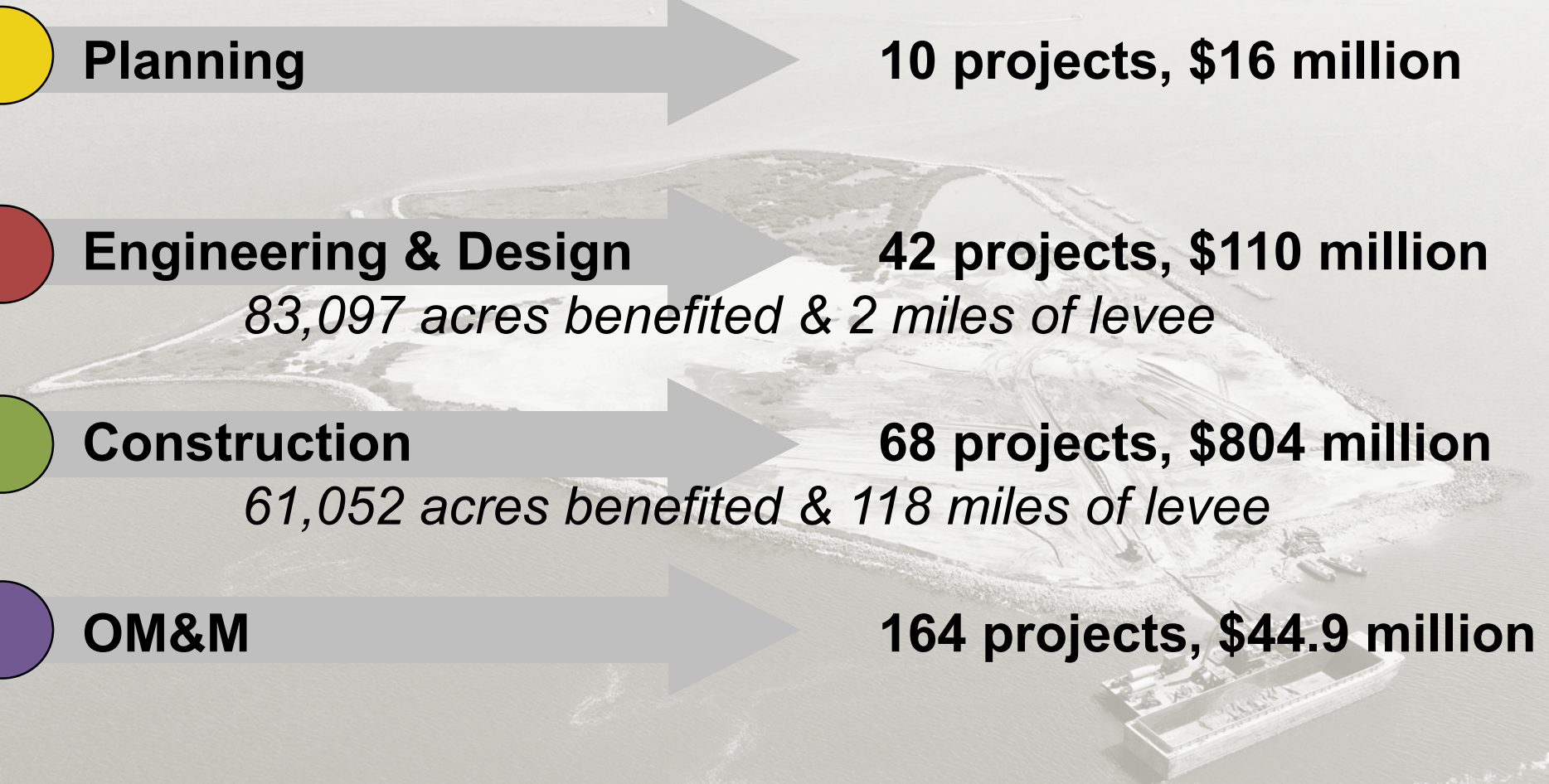


**TOTAL Projected Expenditures
\$1.08 billion**

90% project-associated expenditures
Planning, E&D, Construction, OM&M

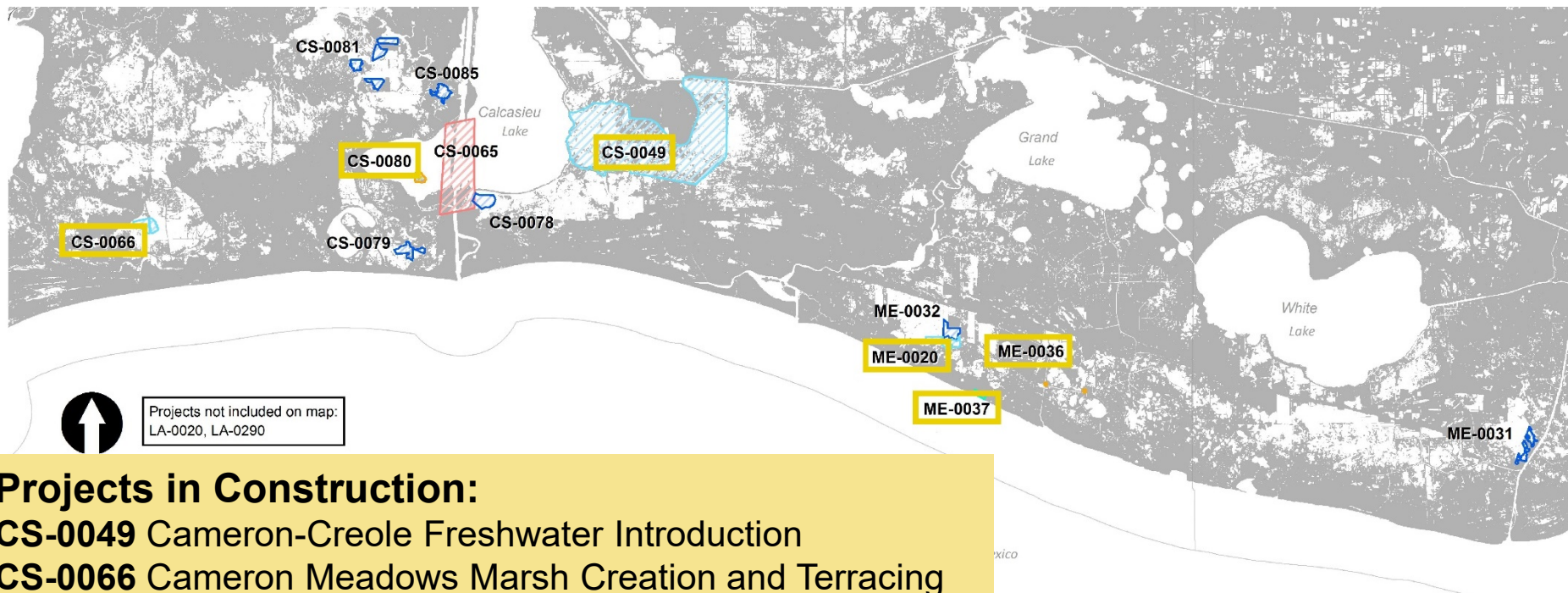


90% Project-Associated Expenditures



SouthWest Coastal Region

14 active projects: 6 in construction, 8 in E & D

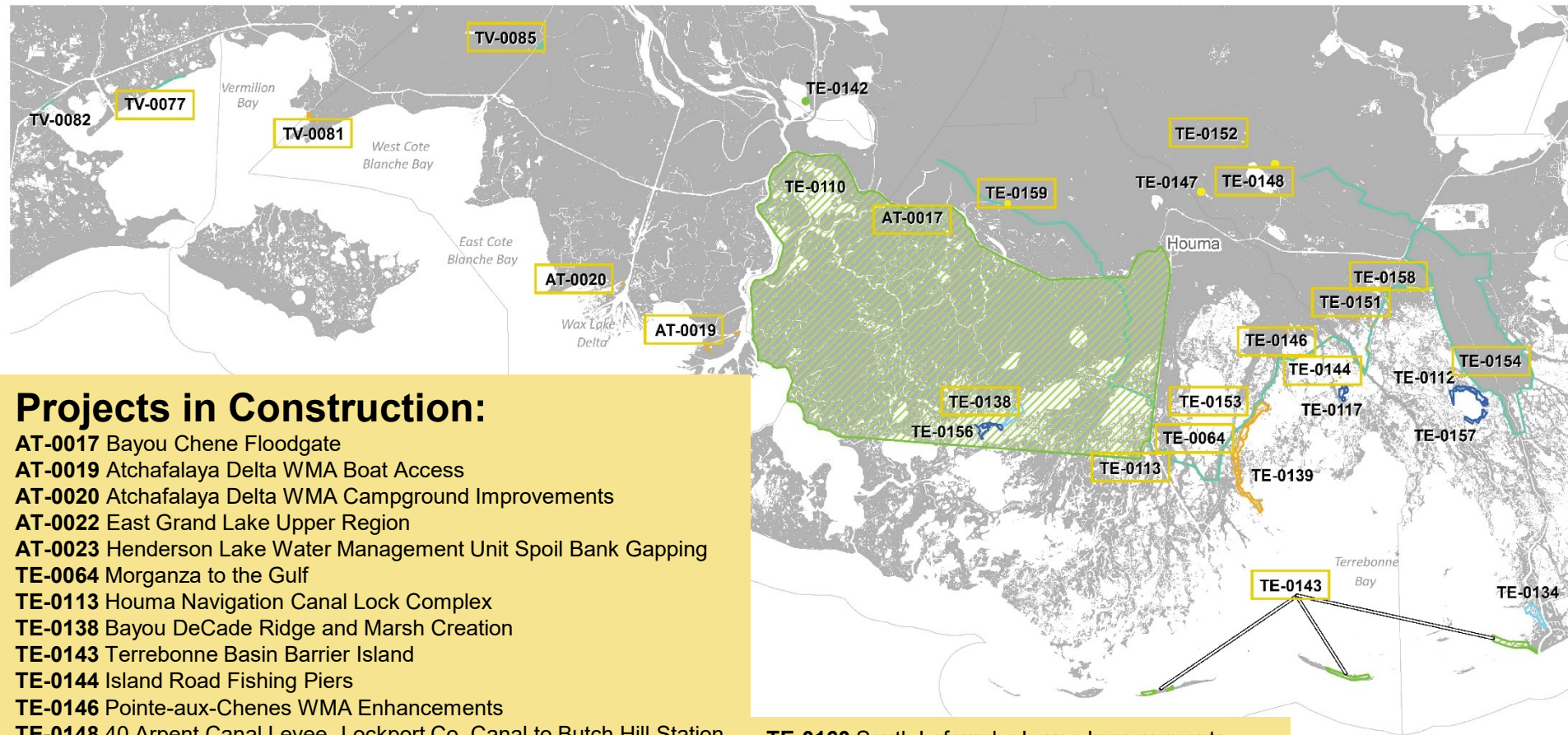


Projects in Construction:

- CS-0049** Cameron-Creole Freshwater Introduction
- CS-0066** Cameron Meadows Marsh Creation and Terracing
- CS-0080** Rabbit Island Restoration
- ME-0020** South Grand Chenier Marsh Creation
- ME-0036** Rockefeller Piers and Signage
- ME-0037** Rockefeller Refuge Shoreline Protection

SouthCentral Coastal Region

37 active projects: 25 in construction, 9 in E & D, 3 in planning



Projects in Construction:

AT-0017 Bayou Chene Floodgate
AT-0019 Atchafalaya Delta WMA Boat Access
AT-0020 Atchafalaya Delta WMA Campground Improvements
AT-0022 East Grand Lake Upper Region
AT-0023 Henderson Lake Water Management Unit Spoil Bank Gapping
TE-0064 Morganza to the Gulf
TE-0113 Houma Navigation Canal Lock Complex
TE-0138 Bayou DeCade Ridge and Marsh Creation
TE-0143 Terrebonne Basin Barrier Island
TE-0144 Island Road Fishing Piers
TE-0146 Pointe-aux-Chenes WMA Enhancements
TE-0148 40 Arpent Canal Levee- Lockport Co. Canal to Butch Hill Station
TE-0151 Grand Bayou Floodgate
TE-0152 Storm Surge Risk Reduction for US-90 at Bayou Folse
TE-0153 LaCache Pump Station
TE-0154 Larose to Golden Meadow Improvements
TE-0158 Reach L Mitigation
TE-0159 Elliot Jones Pump Station

TE-0160 South Lafourche Levee Improvements
TE-0161 North Lafourche Levee Improvements
TV-0077 North Vermillion Bay Shoreline Protection
TV-0081 Cypremort Point State Park Improvements
TV-0085 Yokley Levee
Buffalo Cove Water Management
Murphy Lake Depth Restoration

Projects not included on map:
AT-0022, AT-0023, LA-0290,
TV-0054, Buffalo Cove Water
Management, Murphy Lake
Depth Restoration, USACE Bayou
Courtableau and Bayou Des Glaisses,
Reach L Mitigation

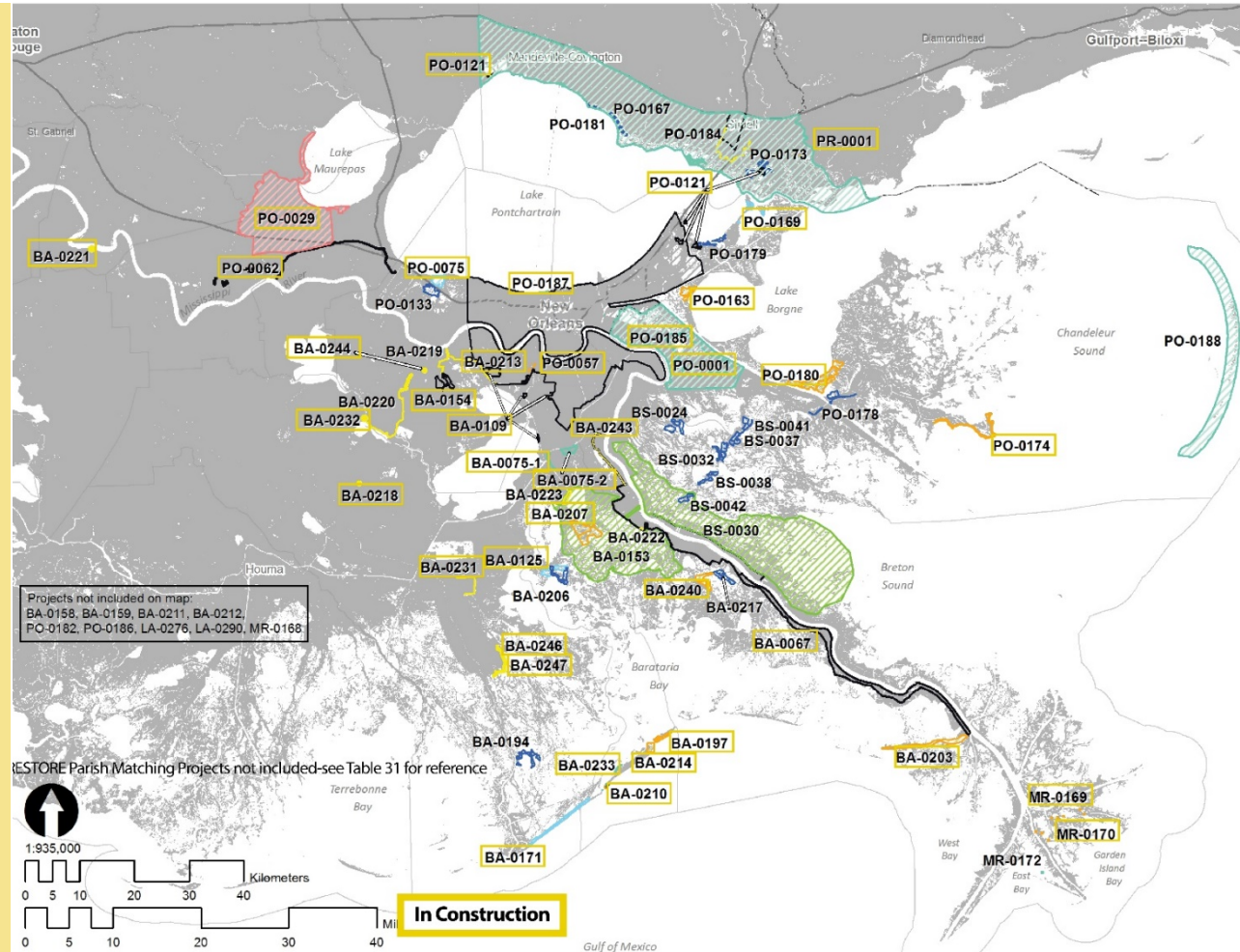
SouthEast Coastal Region

69 active projects: 37 in construction, 25 in E & D, 7 in planning

Projects in Construction:

BA-0067 New Orleans to Venice
BA-0075-1 Jean Lafitte Tidal Protection
BA-0075-2 Rosethorne Tidal Protection
BA-0109 HSDRRS Mitigation- WBV
BA-0125 Northwest Turtle Bay Marsh Creation
BA-0154 Previously Authorized Mitigation WBV
BA-0171 Caminada Headlands Back Barrier Marsh Creation
BA-0197 West Grand Terre Beach Nourishment and Stabilization
BA-0203 Barataria Basin Ridge and Marsh Restoration-Spanish Pass
BA-0207 Large-Scale Barataria Marsh Creation
BA-0210 Grand Isle & Vicinity Breakwater
BA-0213 Bayou Segnette State Park Improvements
BA-0214 Grand Isle State Park Improvements
BA-0218 Levee Improvements for Gheens Community
BA-0221 Pumping Capacity Improvements Phase 1
BA-0231 Storm Surge Risk Reduction for Reach E-North
BA-0232 Des Allemands FDA Pump Station Rehabilitation
BA-0233 Grand Isle Bayside Breakwater
BA-0240 Grande Cheniere Ridge and Marsh Creation
BA-0244 T-Wall Kellogg Pump Station
BA-0246 Storm Surge Risk Reduction for Section D-South to Elevation +18 ft
BA-0247 Storm Surge Risk Reduction for Section D-South at Crawfish Farm
MR-0169 Pass a Loutre Crevasses NRDA
MR-0170 Pass a Loutre Campgrounds NRDA
PO-0001 Violet Canal Repairs
PO-0029 Mississippi River Reintroduction into Maurepas Swamp
PO-0057 SELA- Overall
PO-0062 West Shore-Lake Pontchartrain Hurricane Protection
PO-0075 LaBranche East Marsh Creation
PO-0121 HSDRRS Mitigation- LPV
PO-0163 Golden Triangle Marsh Creation
PO-0169 New Orleans Landbridge Shoreline Stabilization & Marsh Creation
PO-0174 Biloxi Marsh Living Shoreline Project
PO-0180 Lake Borgne Marsh Creation- Increment 1
PO-0185 St. Bernard Pump Station Repairs
PO-0187 Jefferson Parish Lakefront Project
PR-0001 Middle Pearl River WMA Boat Launch

Projects not included on map:
 BA-0158, BA-0159, BA-0211, BA-0212, PO-0182, LA-0276, LA-0290,
 MR-0166, Reach L Mitigation (SLLD), Storm Surge Risk Reduction for
 reach D-South, Floodwall Improvements for D-South at Crawfish Farm,
 Magnolia Ridge Levee Pipeline T-Wall, Goose Bayou (Penn Levee), 100-
 yr Levee Lift, NOV-NF-W-4 Oakville to LaReusitte and MRL 179

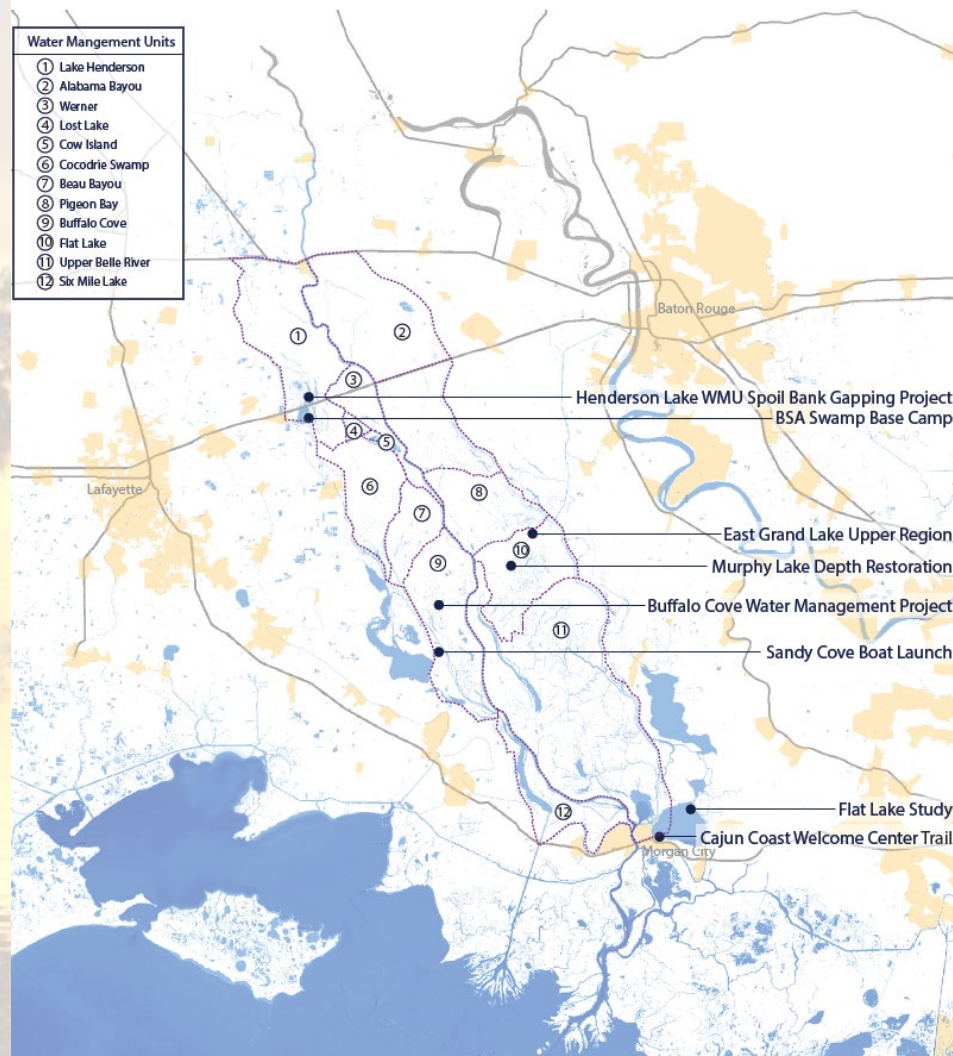


FY 2021 Atchafalaya Basin Annual Plan



FY 2021 Project List:

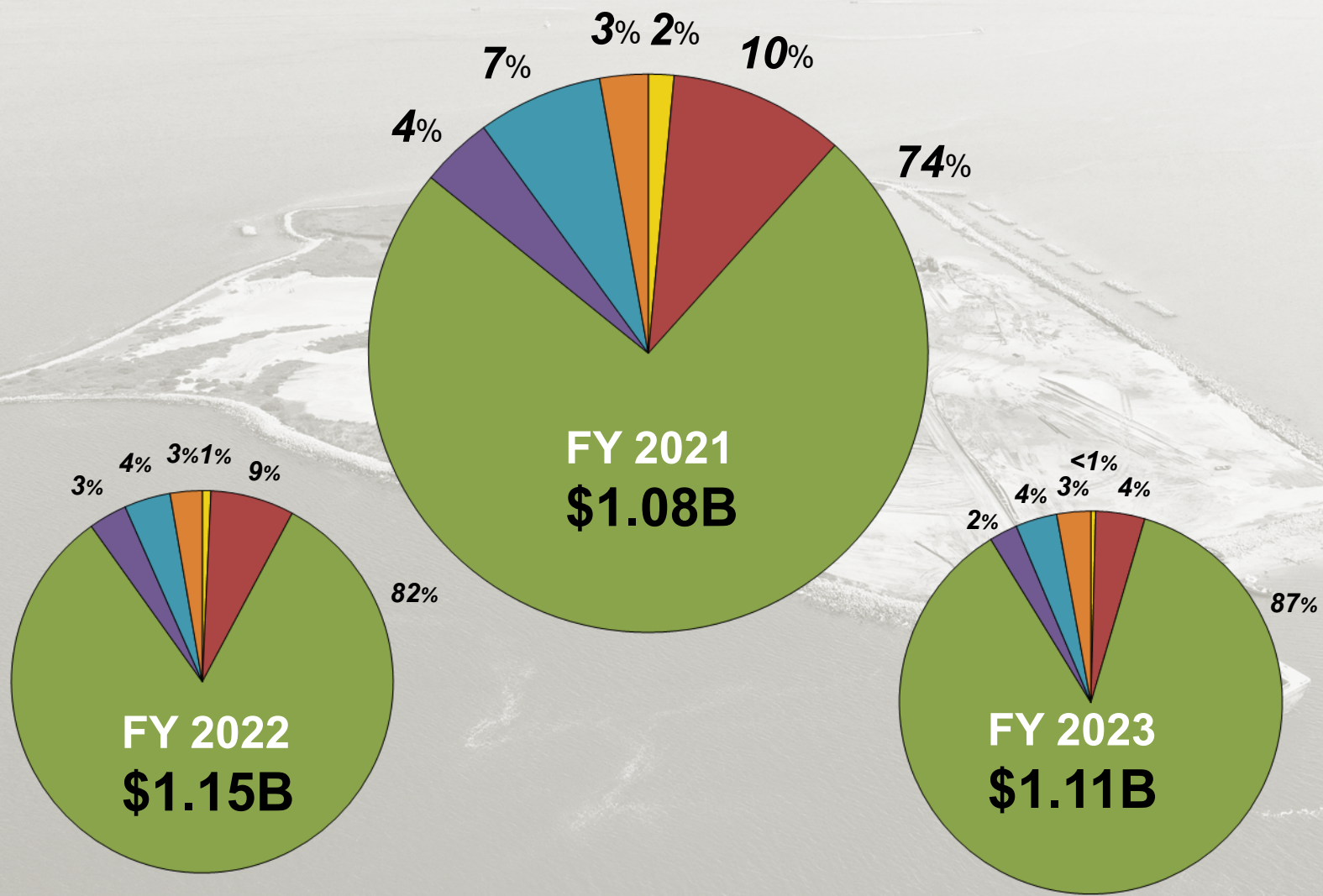
- Henderson Lake WMU Spoil Bank Gapping Project
- East Grand Lake Upper Region
- Flat Lake Study
- Buffalo Cove Water Management Project
- Murphy Lake Depth Restoration
- Other outreach and public access projects:
 - BSA Swamp Base Camp
 - Sandy Cove Boat Launch
 - Cajun Coast Welcome Center Trail
 - Atchafalaya Basin GeoTrail





TOTAL Projected Expenditures FY21, FY22, FY23

By Project Phase



Public comments accepted December 18 through February 22

FY 2021 Annual Plan: 85 Total Comments

FY 2021 Atchafalaya Basin Annual Plan: 4 Total Comments

Read the **FY 2021 Annual Plan:**

[Coastal.la.gov/OurPlan/Annual Plan](https://Coastal.la.gov/OurPlan/AnnualPlan)

Read the **FY 2021 Atchafalaya Basin Annual Plan:**

Coastal.la.gov/OurPlan/AtchafalayaBasinProgram

CONNECT WITH US!



@LouisianaCPRA