



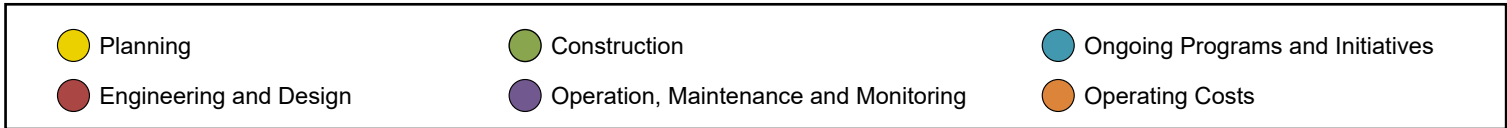
## DRAFT Fiscal Year 2021 Annual Plan Summary

**CPRA produces the Annual Plan in compliance with Act 523 of the 2009 Regular Session, amended by Act 604.**

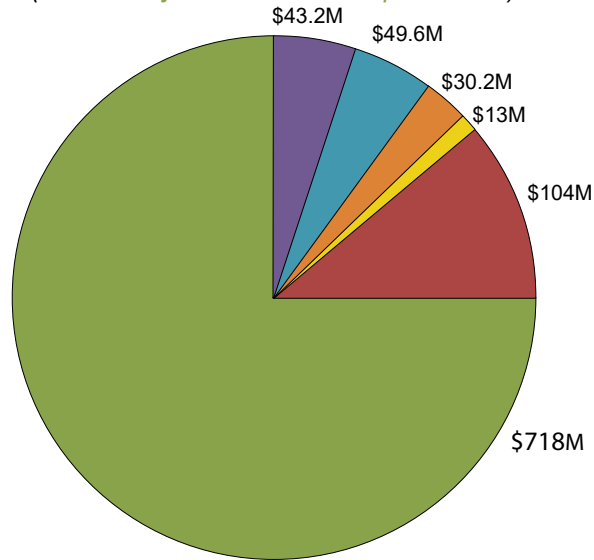
- Spending authorization for the upcoming fiscal year; and
- A 3-Year outlook of projected revenues, expenditures, and project schedules.

**CPRA revenues are based on projections; expenditures occur only IF and WHEN projected revenues are received. Primary revenue streams include:**

- Annual recurring revenues: State mineral revenues, GOMESA
- Annual payments 2017-2032: DWH Oil Spill dollars (NRDA, NFWF, RESTORE)
- Other grant-based programs (Federal CWPPRA reimbursement)



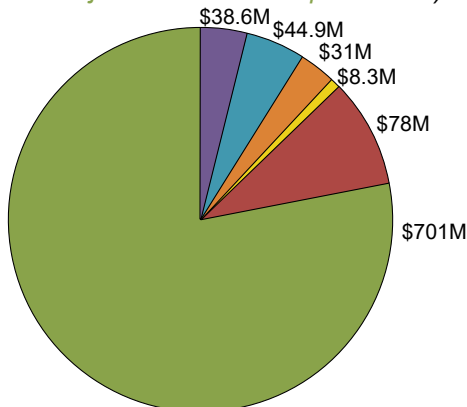
**FY2021: TOTAL EXPENDITURES \$958 million**  
(91.6% Project-Associated Expenditures)



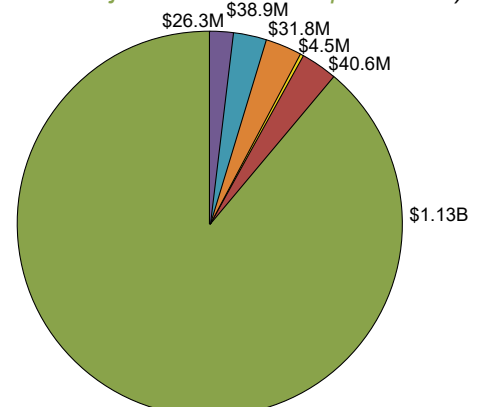
**Notes**

- Construction includes Beneficial Use (\$2M)
- OM&M includes BIMP (\$2.6M) and Repair/Rehabilitation of Projects (\$1.1M)
- Operating Costs include Assistance to Levee Authorities (\$1M) and Project Support (\$5M)

**FY2022: TOTAL EXPENDITURES \$901 million**  
(91.6% Project-Associated Expenditures)



**FY2023: TOTAL EXPENDITURES \$1.27 billion**  
(94.4% Project-Associated Expenditures)



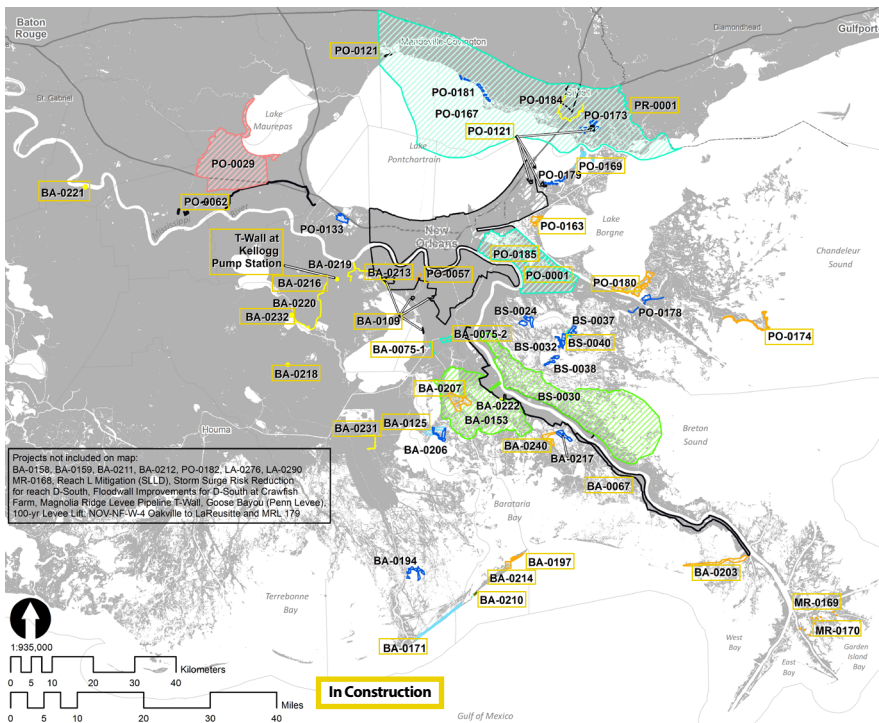
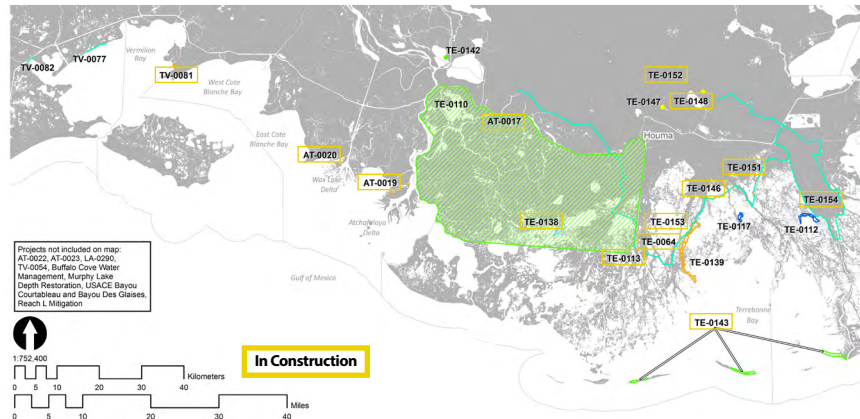
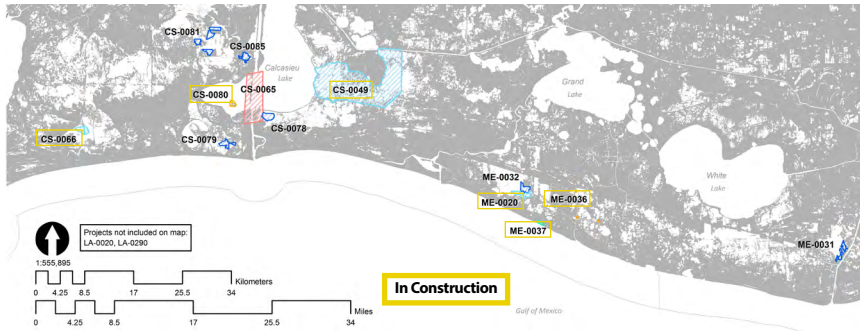
**Notes**

- Construction includes Beneficial Use (\$2M)
- Engineering and Design and Construction include CWPPRA adjustment for outlying years (see Table 12 for explanation)
- Operating Costs include Assistance to Levee Authorities (\$1M) and Project Support (\$5M)

**Notes**

- Construction includes Beneficial Use (\$2M)
- Engineering and Design and Construction include CWPPRA adjustment for outlying years (see Table 12 for explanation)
- Operating Costs include Assistance to Levee Authorities (\$1M) and Project Support (\$5M)

# Active Projects in FY 2021



\*RESTORE Parish Matching Projects not included-see Table 31 for reference

**106 active projects:**  
60 in construction, 38 in E&D, 8 in planning

## SouthWest Region

**14 active projects:**  
6 in construction, 8 in E&D

### Projects in Construction:

- CS-0049 Cameron-Creole Freshwater Introduction
- CS-0066 Cameron Meadows Marsh Creation and Terracing
- CS-0080 Rabbit Island Restoration
- ME-0020 South Grand Chenier Marsh Creation
- ME-0036 Rockefeller Piers and Signage
- ME-0037 Rockefeller Refuge Shoreline Protection

## SouthCentral Region

**29 active projects:**  
19 in construction, 7 in E&D, 3 in planning

### Projects in Construction:

- AT-0017 Bayou Chene Floodgate
- AT-0019 Atchafalaya Delta WMA Boat Access
- AT-0020 Atchafalaya Delta WMA Campground Improvements
- AT-0022 East Grand Lake Upper Region
- AT-0023 Henderson Lake Water Management Unit Spoil Bank Gapping
- TE-0064 Morganza to the Gulf
- TE-0113 Houma Navigation Canal Lock Complex
- TE-0138 Bayou DeCade Ridge and Marsh Creation
- TE-0143 Terrebonne Basin Barrier Island
- TE-0146 Pointe-aux-Chenes WMA Enhancements
- TE-0148 40 Arpent Canal Levee- Lockport Co. Canal to Butch Hill Station
- TE-0151 Grand Bayou Floodgate
- TE-0152 Storm Surge Risk Reduction for US-90 at Bayou Folse
- TE-0153 LaCache Pump Station
- TE-0154 Larose to Golden Meadow Improvements
- TV-0081 Cypremort Point State Park Improvements
- Buffalo Cove Water Management
- Murphy Lake Depth Restoration
- Reach L Mitigation

## SouthEast Region

**63 active projects:**  
35 in construction, 23 in E&D, 5 in planning,

### Projects in Construction:

- BA-0067 New Orleans to Venice
- BA-0075-1 Jean Lafitte Tidal Protection
- BA-0075-2 Rosethorne Tidal Protection
- BA-0109 HSDRRS Mitigation- WBV
- BA-0125 Northwest Turtle Bay Marsh Creation
- BA-0171 Caminada Headlands Back Barrier Marsh Creation
- BA-0197 West Grand Terre Beach Nourishment and Stabilization
- BA-0203 Barataria Basin Ridge and Marsh Restoration- Spanish Pass
- BA-0207 Large-Scale Barataria Marsh Creation
- BA-0210 Grand Isle & Vicinity Breakwater
- BA-0213 Bayou Segnette State Park Improvements
- BA-0214 Grand Isle State Park Improvements
- BA-0216 Magnolia Ridge Levee Lift and Road
- BA-0218 Levee Improvements for Geeens Community
- BA-0221 Pumping Capacity Improvements Phase 1
- BA-0231 Storm Surge Risk Reduction for Reach E-North
- BA-0232 Des Allemands FDA Pump Station Rehabilitation
- BA-0240 Grande Cheniere Ridge and Marsh Creation
- BS-0040 Bayou Terre aux Boeufs Ridge Restoration & Armoring Phase 1
- MR-0169 Pass a Loutre Crevasses NRDA
- MR-0170 Pass a Loutre Campgrounds NRDA
- PO-0001 Violet Canal Repairs
- PO-0057 SELA- Overall
- PO-0062 West Shore-Lake Pontchartrain Hurricane Protection
- PO-0121 HSDRRS Mitigation- LPV
- PO-0163 Golden Triangle Marsh Creation
- PO-0169 New Orleans Landbridge Shoreline Stabilization & Marsh Creation
- PO-0174 Biloxi Marsh Living Shoreline Project
- PO-0180 Lake Borgne Marsh Creation- Increment 1
- PO-0185 St. Bernard Pump Station Repairs
- PR-0001 Middle Pearl River WMA Boat Launch
- Magnolia Ridge Levee Pipeline T-Wall
- Storm Surge Risk Reduction for Reach D-South Elevation to +18 ft
- Storm Surge Risk Reduction for Reach D-South at Crawfish Farm
- T-Wall at Kellogg Pump Station